

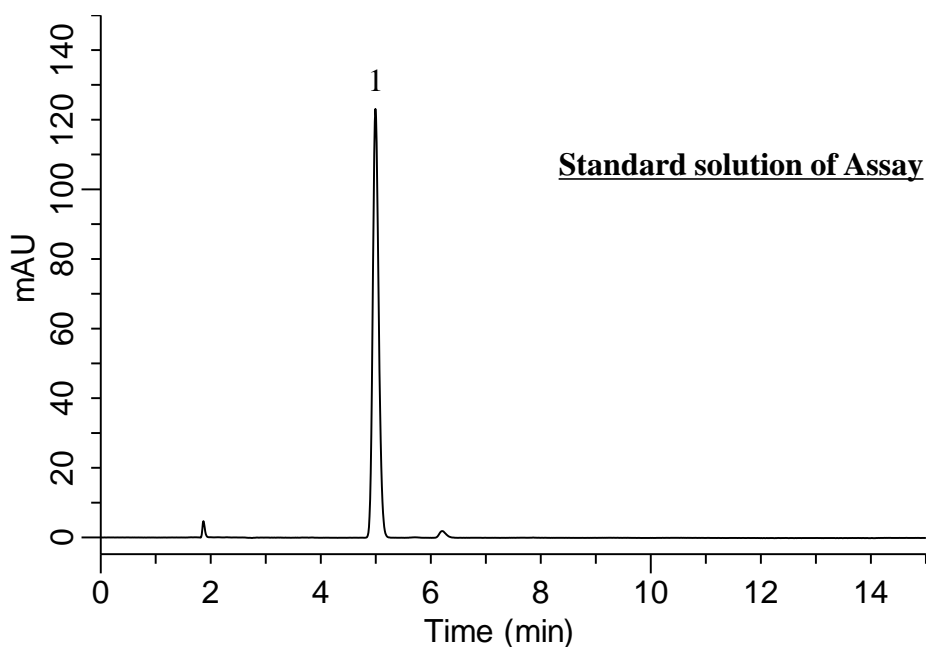
InertSearch for LC

Inertsil Applications

Analysis of Levetiracetam

(Under the Condition of USP42-NF37 1S, Levetiracetam Extended-Release Tablets)

Data No. LB637-0871



Conditions

System : GL7700 HPLC system
Column : InertSustain C8
(5 μ m, 250 x 4.6 mm I.D.)
Column Cat. No. : 5020-16028
Eluent : A) CH₃CN
B) Buffer*
A/B = 10/90, v/v
Flow rate : 1.5 mL/min
Col. Temp. : 30 °C
Detection : UV 205 nm (PD7752 PDA Detector)
Injection Vol. : 10 μ L
Sample : Standard

Analyte:

1. Levetiracetam 80 mg/L

Symmetry factor (1) : 1.17 (\leq 2.0)
RSD of the peak area of 1 (%) (n=6) : 0.06 (\leq 2.0)

*1.4 g/L of anhydrous dibasic sodium phosphate in water. Adjust with phosphoric acid to a pH of 3.5.