

GET SMART

THE CONNECTED SHOP



**BLUETOOTH DRAWER LOCK
USER MANUAL**

Welcome to the Bluetooth Drawer Lock User Manual. Your easy, step-by-step guide to set up and connect your Bluetooth Drawer Lock. The device is designed to be easy-to-use and to replace all average drawer locks with this modern lock.



SUMMARY

I. Device Set Up



1. Set-up Guide
 - a) Set-up Video

II. Device Functions



2. Remote
 - a) Unlock Device

III. Mobile App Connection



3. Registering on the Mobile App
 - a) Downloading the Mobile App
 - b) Adding Devices

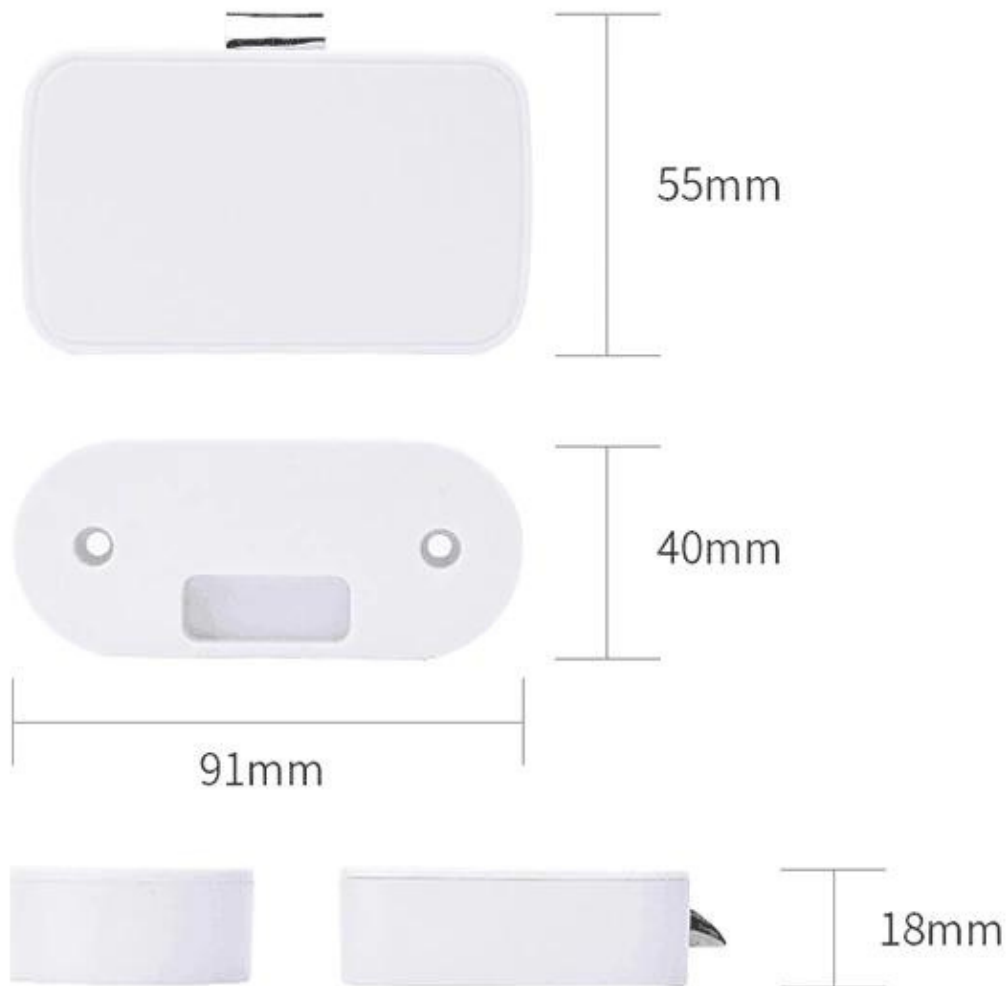
PACKAGING DETAILS



1 Drawer Lock with Screws

2 Double-sided Tapes

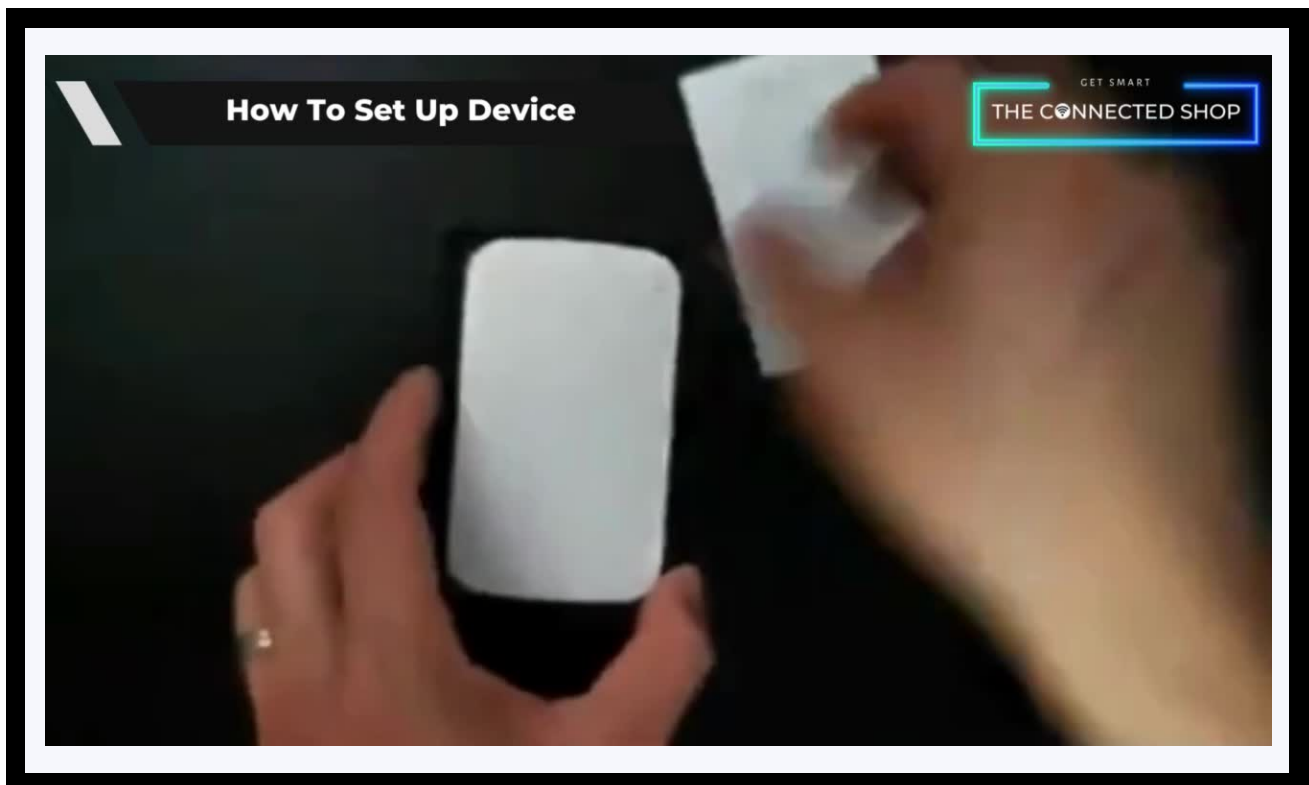
STEP-BY-STEP SET-UP GUIDE



1. SET UP



- a. Remove all items from its original box
- b. Open the battery compartment found on the device and insert two (2) AA batteries
- c. Make sure to close the battery compartment before using the device
- d. Proceed to the following steps on how to add the device to the mobile app
- e. Access the video below on how to properly align and install the locks on your drawer or cabinet using the double-sided tapes
- f. Test the drawer lock after installation and set-up

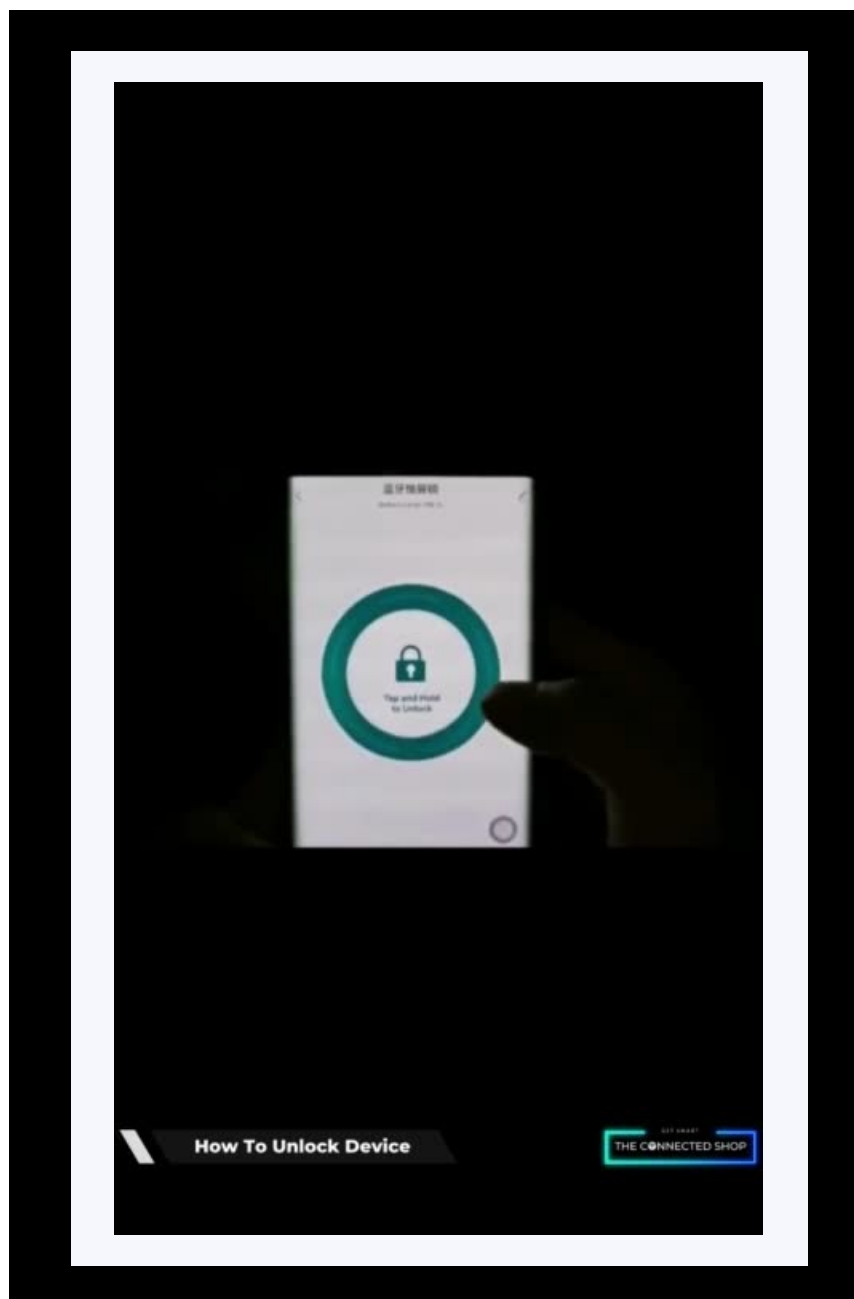


2. INITIAL STATE OF YOUR DEVICE



a) Unlock Device

- To remotely unlock the device via the mobile app, open the app
- Locate the device
- Press and hold the unlock button found on the home page of the device/lock



3. MOBILE APP CONNECTION



a) Downloading the App

Download the application on the Google Play Store or Apple AppStore by searching “Tuya Smart” or by scanning the QR code below

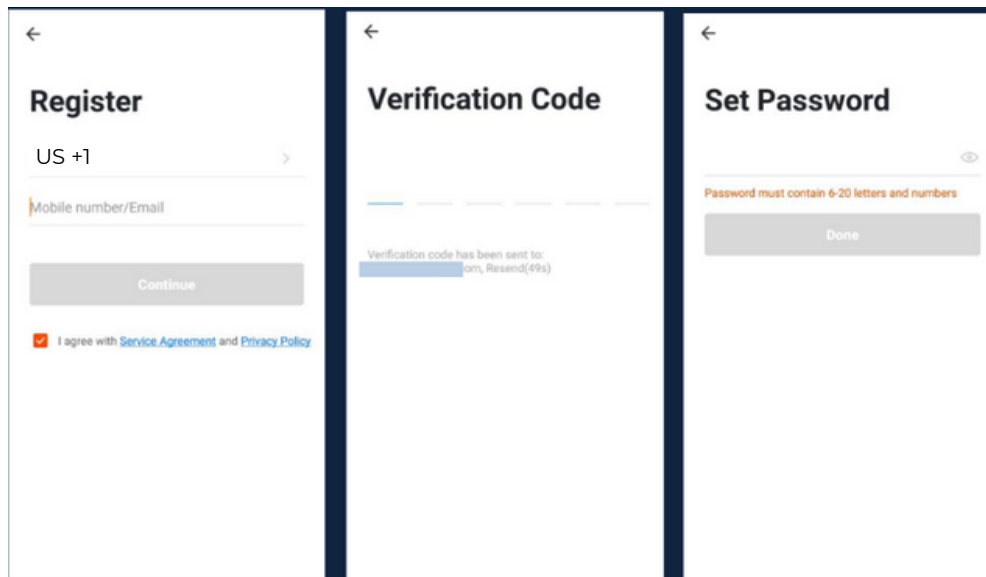


b) Logging in and Registering

After Downloading the App

- Select the country from which you will be using the device, usually the app will prompt it automatically
- You will be redirected to register via email where a verification code will be sent and proceed to enter it on the app in the allotted time limit
- Once the verification code has been entered into the app, you will be asked to set your password
- You will then have full access to the Tuya Smart Platform

3. MOBILE APP CONNECTION

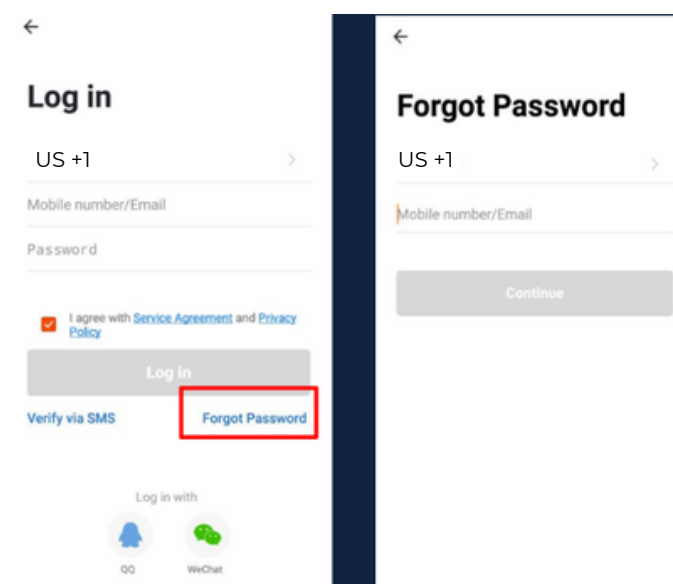


Should you be an existing user to the Tuya Smart Platform, log in using your email and password from the login page.

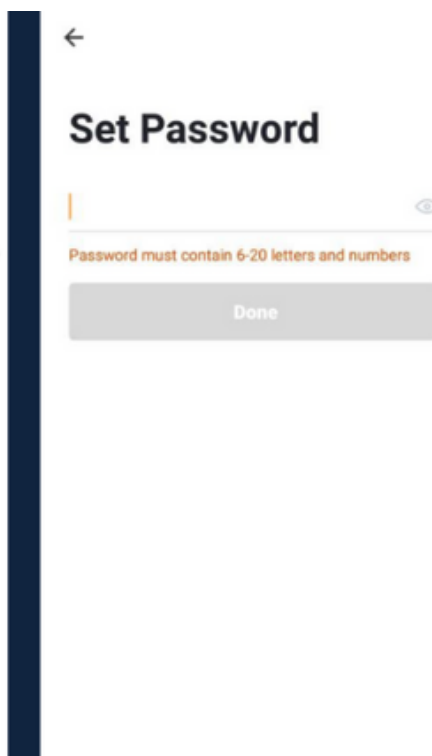
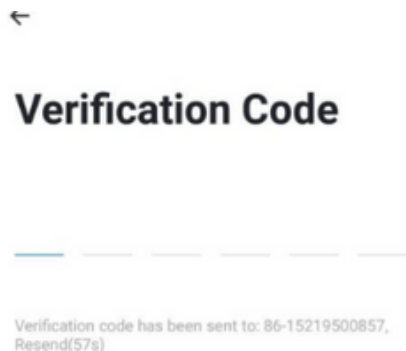
c) Resetting your Password

In case you have forgotten your password and need to reset it, please follow the steps below:

- On the Login Page, when prompted for your email & password, click “Forgot Password” button located below the “Login” button
- Select the country from which you will be using the device, usually the app will prompt it automatically



3. MOBILE APP CONNECTION



- You will be prompted to enter the email where a verification code will be sent and proceed to enter it on the app in the allotted time limit
- Once the verification code has been entered into the app, you will be asked to set your new password
- You will then have full access to the Tuya Smart Platform

In the case that you would like to change your password from the app, please follow the steps below:

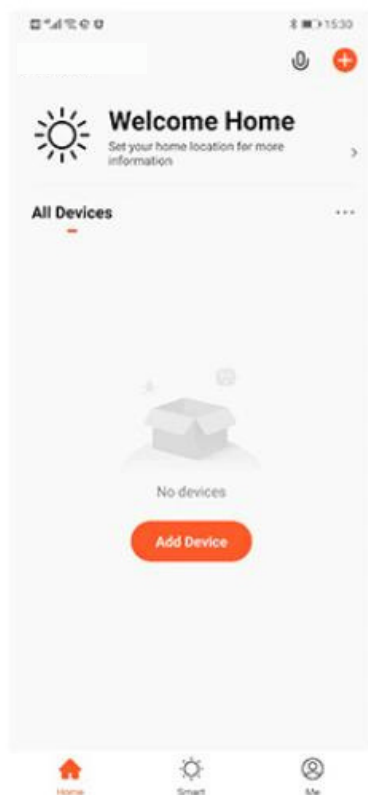
- Tap the 'Me' tab on the bottom right hand corner of your screen
- Click 'Change Login Password'
- You will be taken to the 'Account Verification' page and then tap 'Get Verification Code' button
- This will send a verification to your registered email
- Enter the code in the app
- Proceed to enter the new password

3. MOBILE APP CONNECTION



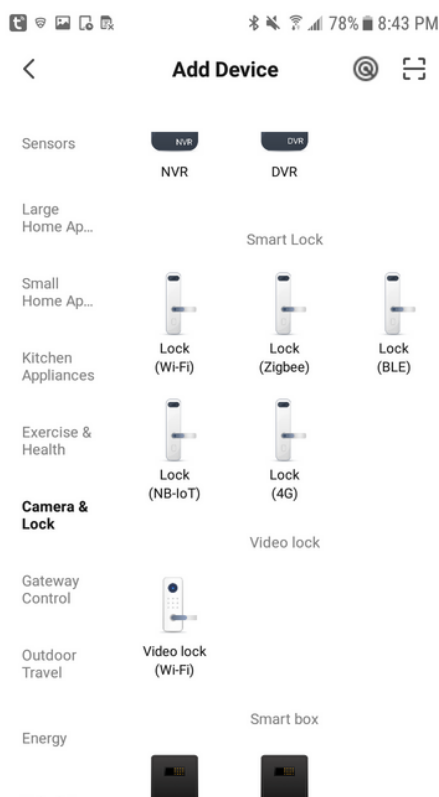
d) Adding Devices

To add devices on the app, please follow the instructions below. Your devices and phone must be connected to the same Wi-Fi network in order for this to work.



- To add a device, click the 'Add Device' or tap the 'Plus' button on the top-right corner of your screen and select 'Add Device'

- This will bring up a list of devices. Go to 'Camera & Lock' from the left side and then click 'Lock (BLE)' to select your drawer lock
- Enable Bluetooth to proceed

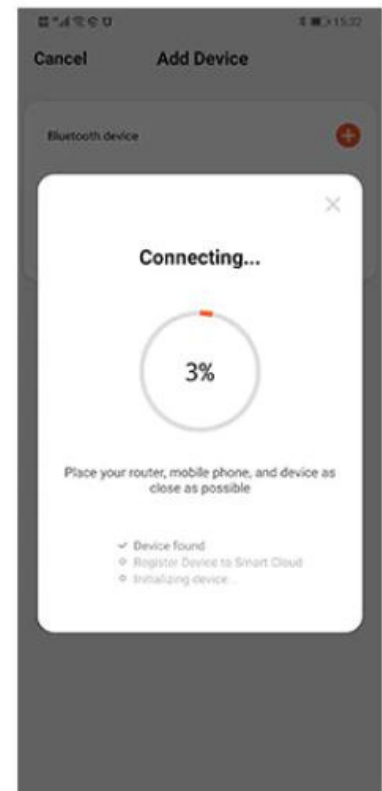


3. MOBILE APP CONNECTION



- Wait for the app to finish searching for the lock until it shows a list of available nearby devices

- Finish adding your device. Once this has been done successfully, you can go on to change the name of your device and control its functions



Congratulations!

You have successfully set up your very own Bluetooth Drawer Lock.
Thank you for being a valued customer of The Connected Shop.

www.theconnectedshop.com





THE CONNECTED SHOP