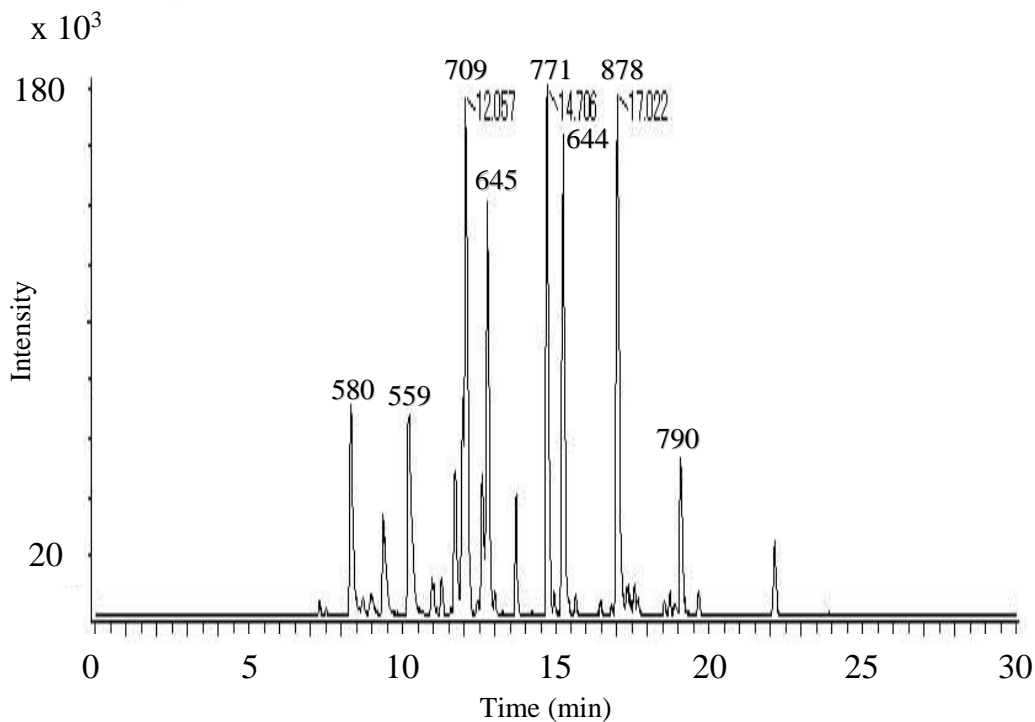


InertSearch™ for LC

Inertsil® Applications

Analysis of Tryptic Digest of Enolase

Data No. LA833-0700



Conditions

System : AccuStream Capillary HPLC system
Column : MonoCap C18 Fast-flow (150 x 0.075 mm I.D.)
Column Cat. No. : 5020-10212
Trap Column : MonoCap C18 Trap Column (50 x 0.075 mm I.D.)
Column Cat. No. : 5020-10028
Sprayer : MonoSpray FS (50 x 0.050 mm I.D.)
Cat. No. : 5010-20006
Eluent : A) 0.1 % HCOOH in CH₃CN
B) 0.1 % HCOOH in H₂O
A/B = 10/90 - 30 min - 50/50, v/v
Flow rate : 0.3 μL/min
Col. Temp. : Ambient
Detection : Nano-ESI MS positive TIC (JMS-T100-LC, m/z : 500 - 1500)
Injection Vol. : 5 μL
Analyte : Peptides

Solutes:

Tryptic Digest of Enolase