

# Winchelsea Star

Price \$1

Your Weekly Community Newspaper

Since 1977

Vol 48 Ed 43

Tuesday 2 November 2025

[winchelseastar.org.au](http://winchelseastar.org.au)

**Murray, Ray and Don modelling our Lions aprons  
at the Moriac Spring Fete.**

**Comes in 3 different colours, take your pick**



**Volunteerism. Do good. Feel great.**

# Community Aspirations Help Shape Place Plan For Winchelsea's Growth

Dedicated and enthusiastic community members have channelled aspirations and experiences shaping a draft Place Plan for Winchelsea, to guide the town's growth across future decades.

A Community Working Group comprising 29 volunteers with diverse ages, genders and lived experiences powered the process during a series of five workshops facilitated by Surf Coast Shire Council.

They strived to define and preserve the essence of the town while refining a vision and principles for managing growth to the year 2050 and beyond.

The draft Place Plan brings shared responsibility and commitments for both Council and the community. Council will release it for community review and comment early next month. Feedback will help shape the final Place Plan.

Council's Urban Futures Strategy, a high level plan for towns across the shire, designates Winchelsea as a primary location for population growth across coming decades.

The draft Place Plan will be available for review and comment for six weeks from 7 November via [yoursay.surfcoast.vic.gov.au/WPP](https://yoursay.surfcoast.vic.gov.au/WPP), and hard copies will be available from the project team on request via [info@surfcoast.vic.gov.au](mailto:info@surfcoast.vic.gov.au) or 5261 0600.

Cr Tony Phelps: "The first step in managing growth in accordance with community aspirations is creation of a Place Plan, capturing the elements most important to people so they will be front of mind during planning.

"It is far-reaching work. The Place Plan vision and principles will guide the creation of a structure plan for Winchelsea, which will be a more detailed and specific blueprint for growth.

"I encourage community members to

review the plan and provide input. And I commend everyone who volunteered to join the Community Working Group, and thank them for their insights and input, demonstrating their passion and care for Winchelsea now and into the future."

Some Community Working Group members shared their thoughts on Place Plan aspirations and the process:

## Greta Duff:



### What will the Place Plan mean for Winchelsea?

"I think the Place Plan will enable residents to feel confident that the Council has our best interests in mind when developing other plans. I think it will make sure that we are highlighting our greatest strengths, like the river and community, and find opportunities to further build and develop our town. It has been developed by the community for the community, so hopefully we have captured what is right:

### How have you found the place planning process?

"Enjoyable! So nice to engage with other members of the community and hear their perspectives about living in Winchelsea. Everyone brings such a unique and valuable perspective. It has made me see Winchelsea through different lenses and also changed how I experience living here – in a good way of course!

### What inspired you to join the Community Working Group?

I wanted to contribute to my community. Be the change you want to see! If I want to see certain things in my community or help shape its future I need to contribute my time to that. The price of community and having things you value is giving up your time, and the Council made it a pleasant experience."

## Elaine Atkinson:



### What will the Place Plan mean for Winchelsea?

"The Place Plan provides an insight into how the community wants to shape their future."

### How have you found the place planning process?

"The process provided a real opportunity to connect and share ideas in a relaxed, friendly way."

### What inspired you to join the Community Working Group?

"To make a difference has been my motto in life, this together with a passion for community development influenced my decision to participate on the panel."

## Rhani Bayon:



### What will the Place Plan mean for Winchelsea?

"I hope that the Place Plan will mean that our town's future reflects the priorities and goals of our community members. A town that will inevitably grow, but in a way that supports and celebrates our rich and varied history, beautiful and valuable natural environment, moveability, transport and infrastructure needs and most

*Continues page 3*





Continued from page 2

importantly retains Winchelsea's rural feel and community spirit."

#### How have you found the place planning process?

"The process has been equal parts stimulating, challenging and inspiring. I have been incredibly grateful for the opportunity to help convey what our community wants and needs, and walked away feeling like I know my community a little deeper. Being a part of the Place Plan Working Group has instilled a deeper sense of belonging to my town and community."

#### What inspired you to join the Community Working Group?

"I was excited by the opportunity to be part of a voice for the future of Winchelsea. I wanted to take part in meeting new people with the same passion, and gain new perspectives and a wider understanding of our community and its diversity. I also sincerely hope that the Place Plan carries weight and value and can make a tangible impact on how Winchelsea grows into the future."



## Exploring new ways to access your library locally

### Hinterland and smaller coastal communities



#### We're exploring ways to improve library services for residents outside of Torquay.

The Geelong Regional Library Corporation currently provides a mobile library bus for up to 15 hours per week across Aireys Inlet, Anglesea, Deans Marsh, Lorne and Winchelsea.

#### We're looking at ways to make library services more convenient, reliable and accessible for everyone – and we want your input.

We're not reducing library services. We're considering more flexible options that might better meet community needs.

#### Options such as:

- Permanent click-and-collect locations
- Library collections co-located in community facilities with regular staff visits
- 24/7 library lockers or cabinets

#### Have your say

Complete our short survey: [surfcoast.vic.gov.au/library](https://surfcoast.vic.gov.au/library)  
Survey closes 30 November 2025.



**Dr. Kale Mazurek**

Your local independent osteopath

No fuss here - just simple and effective musculoskeletal treatments with a relaxed approach.



Proud sponsor

**WINCHELSEA  
BOWLS CLUB**

0417 114 617

[www.kalemazurek.com](http://www.kalemazurek.com)  
[osteop@kalemazurek.com](mailto:osteop@kalemazurek.com)



Thurs 10:15 am - 8:00 pm

Sat 8:00 am - 1:00 pm

32-34 Main Street, Winchelsea








**SPECIALISING IN QUALITY**

- NEW HOMES
- ALTERATIONS
- CARPORTS
- BATHROOMS
- EXTENSIONS
- DECKS
- VERANDAHS
- WINDOW REPLACEMENTS
- RENOVATIONS
- PERGOLAS
- RE-GLADS

**Leigh Lupton**  
0438 840 104

**LEIGHLUPTON17@GMAIL.COM**

Est. 1977




**HESSE RURAL HEALTH**

Acute Care\*  
Urgent Care\*  
Residential Aged Care\*  
Community Nursing  
Dietetics  
Physiotherapy  
Occupational Therapy

Diabetes Education  
Social Support Groups  
Counselling  
Home Care  
Health Promotion  
\* services from Winchelsea only

[www.hesseruralhealth.com.au](http://www.hesseruralhealth.com.au)  
P: (03) 5267 1200 E: [reception@hesse.vic.gov.au](mailto:reception@hesse.vic.gov.au)

## Winchelsea Taxis is now Surfcoast Taxis

Our fleet of vehicles are growing to all late models and we are covering an extended area including Winchelsea, Colac, Bannockburn, Inverleigh, Great Ocean Road and Geelong.

We have a fleet of 10 seater Maxi Vans, all with capacity to carry wheelchairs.

**Surfcoast Taxis Pty Ltd**  
All Bookings: 0408 325 992  
Fax: 5267 2699  
Email: [bannotaxis@gmail.com](mailto:bannotaxis@gmail.com)  
(Admin or Stan 0429 672 888)  
66A Batson Street  
Winchelsea 3241



Accounts NDIS provider. TAC, DVA etc

NDIS provider number 4050001044  
NDIS provider number 4050001048



Book your next ride with **smartHAIL**



Book Track Pay Rate






**Winchelsea Dental Practice**

**NEW OPENING HOURS**

8am - 6.30pm Monday & Tuesday  
8.30am - 6.30pm Wednesday  
8.30am - 5pm Thursday  
(Friday emergencies call 5267 2071)

Find us at 21 Hesse St  
Call 5267 2071 or book online  
[www.winchelseadental.com.au](http://www.winchelseadental.com.au)



**Moriac Veterinary Clinic**  
**0447 781 089**  
PHONE 24 HOURS  
784 Hendy Main Road Moriac  
[info@moriacvet.com](mailto:info@moriacvet.com)  
[www.moriacvetclinic.com.au](http://www.moriacvetclinic.com.au)  
HOURS // Monday - Friday: 8am - 5pm



**SIMPLE STORAGE SOLUTIONS**

- Personal & Business Storage
- Boat, Caravan & Vehicle Storage
- High Security Premises
- Individually Alarmed Units
- Electric Gate Access
- 7 Day Access & CCTV

**YOUR STORAGE PROBLEMS SOLVED**

**5267 3116**  
6 ALSOP DRIVE, WINCHELSEA 3241

- Domestic and Commercial hire equipment
- Industrial welding gas
- Digging and Earthmoving equipment
- New trailers and trailer repairs
- Firewood
- Stockists of Royal Oil Lubricants products
- LPG for domestic and commercial requirements

Give Chris and the Team a call on 5232 1177 or email [info@colachire.com.au](mailto:info@colachire.com.au)

[www.colachire.com.au](http://www.colachire.com.au)

101 Wallace St Colac 3250






# Residents “Hop In” for the Grand Opening of Hesse’s New Café

By Hesse Rural Health

There’s a fresh buzz of excitement at Hesse Rural Health (Hesse), with the long-awaited opening of the Hop In Café for residents on Monday 27 October at 2pm.

The bright new café space marks the beginning of a new social chapter for residents, bringing people together over a cuppa and a chat in a welcoming environment. The Hop In Café was officially launched with a special grand opening celebration attended by residents, visitors and staff, marking the first stage of what will be a gradually expanding service over the coming months.

Initially, the café will operate twice a week – Mondays from 2:00pm to 4:00pm and Wednesdays from 9:30am to 11:30am – and will be run by Hesse lifestyle staff as part of the regular resident activities program. Residents will be able to enjoy freshly brewed coffee and tea, along with sweet treats and healthy snacks, including favourites such as date scones, slices, cakes and fruit bowls. A small range of gluten-free and purchased café-style items will also be available, such as caramel, cherry and mint hedgehog slices, lovingly stored and prepared on-site by the lifestyle team.

The introduction of the Hop In Café also supports Hesse’s broader focus on wellbeing and healthy living. All food and drinks available through the café will align with the organisation’s healthy choices policy for hospitals and health services, encouraging nutritious options that still feel indulgent and enjoyable.

The Hop In Café is being rolled out in three stages. During Stage 1, it will be open to residents only, providing a chance for the team to settle into a routine and fine-tune operations. From Stage 2, beginning 22 November, the café will open its doors to staff, visitors and acute patients as well, with additional opening hours on Saturdays and new menu items including sandwiches.

By Stage 3 in December, it is planned that the café menu will expand further to include toasted sandwiches and yoghurts, and volunteers will be invited to help with the day-to-day running of the service. The café team will then review how things are going and look ahead to developing a long-term plan for 2026 and beyond.

While it’s early days, the Hop In Café has already been embraced as a place for connection and conversation – a cheerful spot where residents can enjoy good company and a familiar sense of community. With its friendly service, homely touches and focus on fresh, local food, it’s set to become a much-loved feature of daily life at Hesse Rural Health.







Used with permission of Gary Clark, Swamp Cartoons  
Cartoon Books available online: [swamp.com.au](http://swamp.com.au)

**VICTORIA** State Government | Department of Health | **HESSE RURAL HEALTH**

**Board director opportunities at Hesse Rural Health**  
The Minister for Health, the Hon. Mary-Anne Thomas MP, is pleased to invite applications for part time board director positions at **Hesse Rural Health**. The positions start on 1 July 2026, for up to three years. These positions provide an exciting opportunity for persons with an interest in making a difference in the health sector and have the knowledge and skills for ensuring health care is delivered safely and effectively, with public money used to the benefit of all Victorians. As a director you will be doing more than just contributing your time or knowledge. Being appointed to a hospital board places you in a position of trust. You will play an important role in providing leadership, accountability and integrity in the delivery of healthcare across Victoria. Applicants are selected for their capabilities, including personal and professional experience, knowledge, and skills that contribute to the strategic leadership and oversight of healthcare for the Victorian community. It is preferable that applicants reside in Victoria or, within the border community of those hospitals near the New South Wales and South Australian borders. While Victorian public health boards are based on capabilities, boards are more effective when these capabilities also represent the richness of the diverse voices of Victorian communities. We encourage First Nations people, people living with a disability, people from culturally diverse backgrounds, people who identify as LGBTQIA+, gender equality, and upholding human rights.

Applications close at **Midnight Sunday 23 November 2025**.  
Further information about Victorian health service boards and how to apply, please go to the following website: [www.health.vic.gov.au/board-applications](http://www.health.vic.gov.au/board-applications)  
For all enquiries regarding the Board, please contact  
**Kate Lockhart, Executive Assistant**  
on (03) 5267 1200 or email [kate.lockhart@hesse.vic.gov.au](mailto:kate.lockhart@hesse.vic.gov.au)

**Corangamite Financial Services**

# Annual General Meeting

Come along to our AGM meeting 2024/2025

Special Guest Speaker David Robertson named in the Australian Financial Review as the 'most accurate cash rate forecaster'!

**When** Tuesday 18<sup>th</sup> November 2025  
**Time** 6pm till 8pm  
**Where** Anglesea Bowls Club  
15 Cameron Road, Anglesea  
**RSVP** [secretary@corangamitefs.com.au](mailto:secretary@corangamitefs.com.au)  
or phone 0427 099 410

Light Supper Provided

**STS ACCOUNTING GROUP**

*Need tax advice...?*

## Business & SMSF Tax Planning Specialists

**Winchelsea** 5267 2673  
**Torquay** 5261 2262  
[surftax.com.au](http://surftax.com.au)

**Community Bank**

Winchelsea,  
Anglesea, Lorne &  
District





# Winanglo Grand Opening

by Judy Cameron

Our wonderful Winchelsea Community Village in Harding Street was officially opened on Friday, Oct 30.

Among the guests were the Surf Coast Mayor Mike Bodsworth; Deputy Mayor, Libby Stapleton; Winchelsea Ward Councillor Tony Phelps; former Chief Executive Officer and Managing Director of Bendigo & Adelaide Bank Marnie Baker; Architect & Project Manager Martin Pearce; local businessman John Knuckey; Will Richardson from HF Richardson's Real Estate and Stock Agency and the local Bendigo Bank managers Jeremy Morris and Matilda Pink.

As MC for the event Rob Cameron said "The Winchelsea Community Bank Village stands as a proud symbol of collaboration — where a small town, a bank, a council and a not-for-profit\*



PHOTO: Speeches - and an impressive afternoon tea provided by 'Feed Me' Torquay - were held inside the joint garage.

came together to deliver something extraordinary."

*\*The board of the Winchelsea Community Bank has set up an independent incorporated charity, Winanglo Inc., for the sole purpose of facilitating community projects in and around Winchelsea, Anglesea and Lorne (Win Ang Lo). The Winanglo Committee are John Knuckey, Gerard Kelly, Ken McDonald, David Kelly, Naida Hutton, Michelle Stocks, Richard Butcher and John Hutton*

This has prompted me to see the opportunity to downsize from our 5 acres in Winchelsea South (before we HAVE to!) to a perfectly designed setup in which to age. I have put my name down on Unit 9.

Check out the options here: <https://www.realestate.com.au/property-retirement+living-vic-winchelsea-148809032>

You're invited to our  
**AGM & INFORMATION NIGHT**

**LEARN**

- Collect 2026 Information Packs
- Opportunity to view & order HMK kinder uniform
- Meet kinder educators & explore the learning space
- Connect with kinder families
- Learn about the HMK Parent Advisory Group (PAG) & how to join, to support the kinder in 2026

**PLEASE JOIN US**

Thursday 13<sup>th</sup> November  
7pm onwards  
HMK Kinder/Church Hall  
32 Hesse St. Winchelsea

Scan here for more info about HMK Kinder

**GROWING WINCHELSEA**

**SHAPE WINCHELSEA'S FUTURE!**

**ANNUAL GENERAL MEETING**

JOIN US TO CELEBRATE OUR ACHIEVEMENTS & HELP PLAN FOR THE FUTURE OF WINCHELSEA. HEAR UPDATES ON LOCAL PROJECTS, MEET COMMUNITY MEMBERS, & DISCOVER HOW YOU CAN GET INVOLVED IN SHAPING OUR GROWING TOWN

**MONDAY  
10 NOVEMBER 2025  
7.00PM - 8.00PM  
SHIRE HALL**

- ✓ HAVE A SAY IN WINCHELSEA'S FUTURE
- ✓ CONNECT WITH OTHER LOCALS
- ✓ GET INVOLVED IN PROJECTS THAT MATTER TO YOU

**All residents, businesses & community partners welcome!**

RSVP BY 7/11/25-FOR CATERING PURPOSES  
Email: [secretary@growingwinchelsea.com](mailto:secretary@growingwinchelsea.com)  
MOBILE: 0458009616  
[WWW.GROWINGWINCHELSEA.COM](http://WWW.GROWINGWINCHELSEA.COM)





**Zinaida Campion**

To share your stories and inspire the community, please contact Zinaida. 0428 403 784 [zinaidacampion@gmail.com](mailto:zinaidacampion@gmail.com)

## Betty Maree, The New Voice in Country

I met Betty Maree on Instagram earlier this year, where I was inspired by her powerful message. I couldn't help but admire her grit and resilience in the face of her challenges. Since then, we have had many online conversations, and I can now say with pride that she is my friend.

Betty Maree is a Country singer-songwriter, whose songs are all about 'heartbreak, love, and feeling empowered'. She is also an unofficial ambassador for Loud Shirt Day, a charity which supports children with hearing loss.

A quiet warrior, she is steadily following her calling. Betty Maree's story is too remarkable to stay under wraps. At my request, for the first time, she has written it down. I hope it inspires you to pursue your destiny no matter the obstacles.

### My Music Story ..... Betty Maree

I was born with hearing loss, and my parents did their best to help me in every way possible growing up. My parents put me in speech therapy and I had a lot of hearing tests.

When I was 4 years old I got my first hearing aids. Hearing Mum's voice for the first time just stunned me and I remember getting Care Bears dolls afterwards.

When I started to speak I learnt how to sing as well. I just put a few words I learnt together, and started singing them out loud. Did it make sense? No, but that's how I learned to talk and write.

I remember when Dad had a video camera (he used to film everything), and I was maybe 6 or 7 years old at this point, and he would film himself while I was in the background singing a 60s song called Chapel of Love. Then as I got older, he and I would just make up songs on the fly. That was our bond.

Then my siblings and I got a video game console called a

PlayStation. One of the many games we had was the SingStar series. I had SingStar ABBA, SingStar Disney, SingStar Pop Hits, SingStar Anthems, SingStar Legends, a high school musical SingStar, SingStar Rock Ballads, and SingStar 80s. That game taught me how to sing. At first, all of them sounded like I was mumbling, and then as I progressed, I started to sing the actual songs on there.

I didn't start writing songs until high school. I used to write about high school crushes and songs about my favourite boy bands. (Those songs will never see the light of day because they are too embarrassing!). I started to take song writing seriously in 2021. Some of my singles are from that timeframe. I met my first love at age 23. He was a bit too young for me but at the time I didn't care.

In the two and a half years I was with him, he didn't treat me right, and that's how my album came about. It is still in the writing stage and I am saving up to get it recorded. I am hoping it will be released in 2027 or 2028.

I chose my stage name, Betty Maree. Betty was the name of my grandma who I lost when I was 3 years old, and Maree is my middle name. It has the English spelling, because Mum didn't want it to be confused with the biscuit.

I chose country pop music because it suits my voice better than any other genre of music. Finally, the reason I became a singer is to break the mould and prove that hard of hearing/deaf people can play music and can do all of the things that hearing people can do. Because we are humans too. I want people to look up to me and say, If she can do it, so can I.



**Zinaida Campion** is a classical soprano, vocal coach, artist and model raised in Winchelsea. She is an alumna of VOYCE Victorian Opera, a Windfire Vocal Scholar, and Co President of Geelong City Opera. She has a strong background in languages, a love of local history, and an all-consuming passion for promoting the arts in rural areas.





# Councillor Catch-Up

by Tony Phelps, Winchelsea Ward Councillor

How good are all the new trees and plantings around Winchelsea? Part of the "Branching Out" project (more at [jo.my/winchelseatrees](http://jo.my/winchelseatrees)) starting with Winchelsea and Deans Marsh, in years to come this will make a big (and very positive, imo) difference. I recall driving through Waurm Ponds in its early days and noting its sea of bare roofs – now trees have popped up above the roofline and it's looking so much better. Winchelsea & Deans Marsh have always had good tree coverage, but this project will provide more shade, more wildlife habitat, cooler streets, and will just look great. I love a tree-lined avenue.

A couple of people have been in touch about the rapid spring growth around town. While the area between kerb and house is the occupier's responsibility to mow, if there's any vegetation between kerb and the road it is Council's responsibility. A "nice work" to those who mow both bits, as for the untidy-looking stuff I'm assured Council will be tending to it as soon as possible given it is peak growing season plus preparations are under way for the coming summer fire season eg. cutting back and clearing around our (large) Shire.

Are you a library user? I'm a fan, always been impressed that the world of print is

available for free to all (ratepayer & taxpayer fund, of course). The library truck is coming to the end of its economical life and innovative new ways are under investigation to provide a library service into the hinterland and coastal towns that don't have a permanent library (ie. outside Torquay!). Take a look at [jo.my/newlibraries](http://jo.my/newlibraries) where you can see some ideas and more importantly where you can chip in your thoughts and suggestions. I can assure you, your feedback is genuinely valued so please take the opportunity.

As you may know, the Victorian Electoral Commission (VEC) recalculated the distribution of votes for Torquay Ward, to fill the vacancy left by Rebecca Bourke. Eric Menogue came out as next in line but has not accepted the role. The VEC repeat the operation this week, hopefully a successful conclusion this time. The major work on the horizon for Councillors is an 'Action Plan' for the current Council Plan (ie. identifying and prioritising what work will be done for the remainder of this financial year) and preparing for the next budget. While I'm here, a reminder that all 9 Councillors are officially 'your' Councillors – the Wards are theoretically in place for election purposes, the State government requires us to act for the benefit of the whole Shire and not just our own Ward. So feel free to contact ANY Councillor when you need to.

Lastly, the Winchelsea pool opening hours have been set with an interesting twist – midday to 6pm every day from late November to late March, however



the pool will be closed when the day's temperature won't get above 21 degrees. The hours from any closed day will be tacked on to another day eg. longer openings on weekends. Sounds like a staff scheduling nightmare to me, but a positive move for pool users! Public pools are hideously expensive to run but the social and health benefits are huge, as you will have read in Haidee Benning's recent series of articles in the Star. I encourage everyone to make the most of the pool as this full season will be providing the data for planning its future.

#### Disclaimer:

*The views and opinions expressed in this communication are my own and do not necessarily reflect the official policy, position, or views of Surf Coast Shire or its staff. They are offered in my capacity as an individual Councillor and should not be interpreted as representing the collective views of the Council or Shire.*

## Further Countback Required For Surf Coast Shire Council

A further countback will be conducted for Surf Coast Shire Council's Torquay Ward after the successful candidate did not lodge a written declaration of qualification to be a councillor.

A countback conducted on Tuesday 28 October resulted in Eric Menogue receiving enough votes to be elected, however Mr Menogue did not return the declaration within 48 hours.

Under the Local Government Act 2020, the VEC cannot declare a candidate elected until they complete a declaration stating they are still qualified to be a councillor.

The VEC will hold a further countback of all formal votes from the 2024 Surf Coast Shire Council, Torquay Ward election on Wednesday 5 November.

Votes will be redistributed to candidates who were

unsuccessful in 2024 but are still eligible to be elected.

The countback is based on the proportional representation method of counting, which means candidates must achieve a proportion of votes known as a quota.

The vacancy occurred after the resignation of Councillor Rebecca Bourke.

Candidates and other interested parties can watch the countback online. A link to join the countback will be available from 10am on Wednesday 5 November at [vec.vic.gov.au](http://vec.vic.gov.au)

The result will be announced through a media release and published on the VEC website.



# Victoria is banning machetes from 1 September

A 3 month amnesty will allow Victorians to safely dispose of machetes with no penalties.



Scan to learn more



Authorised by the Victorian Government,  
1 Treasury Place, Melbourne





# Winchelsea Star

Your Weekly Community Newspaper

Since 1977



## This Week's Winchelsea Star

Editor Judy Cameron

Designer Tony Phelps

## Next Production Coffee Meeting Sat 29 November 9am @ La Hoot

All Welcome - come for a coffee!

**send your stories**  
**news@winchelseastar.org.au**

## LOCAL NEWS and ARTICLES WELCOME

Include name and address of the sender

Email news@winchelseastar.org.au

Leave hard copy at IGA Supermarket

## DEADLINE 5pm Fridays

4pm Sundays - hard copy articles left at IGA

6pm Sundays - sports results and weekend events

**EDITOR 5273 0295** Leave a message

## ADVERTISING

advertising@winchelseastar.org.au 5273 0294

## free digital subscription

[www.winchelseastar.org.au](http://www.winchelseastar.org.au)

## JOIN US ON FACEBOOK

[facebook.com/TheWinchelseaStar](https://facebook.com/TheWinchelseaStar)

## production

**Editors:** Cerrie Forgan, Yvonne Stevens, Judy Cameron

**Advertising:** Sasha Gauntlett, Neil McInnes

**Design:** Susan Corby, Tony Phelps

**Printed by:** Winchelsea Community House

**Website by:** Winch Websites

## committee

**President:** [president@winchelseastar.org.au](mailto:president@winchelseastar.org.au)  
Neil McInnes

**Treasurer:** [treasurer@winchelseastar.org.au](mailto:treasurer@winchelseastar.org.au)  
Cathy Cheadle

**Secretary:** [secretary@winchelseastar.org.au](mailto:secretary@winchelseastar.org.au)  
Tony Phelps

**Members:** Mick O'Mara, Linda Carter, Susan Corby  
Sasha Gauntlett, Judy Cameron,  
Yvonne Stevens, Cerrie Forgan



© Winchelsea Star Org. Inc. All rights reserved  
Winchelsea Star Organisation Inc.

Reg. No. A0053999F ABN 75 941 529 279  
[winchelseastar.org.au](http://winchelseastar.org.au) PO Box 5 Winchelsea 3241

Views expressed are not necessarily those of the  
Winchelsea Star or Committee. The Winchelsea Star  
reserves the right to edit or not publish any article.



5234 6585 0417 385 984

For all your domestic & stock water.

Also available for road and civil construction

Local owned and operated.



# SOUTHERN GRAIN STORAGE PTY. LTD.

AG SUPPLIES FERTILISER GRAIN STORAGE SEED CLEANING

**(03) 5267 2351**



## Café La Hoot

# have you tried 'owl' coffee?

1 willis st [cafelahoot@gmail.com](mailto:cafelahoot@gmail.com) 0407 528 999

# 2026 Australian Of The Year Awards - Nominees For Victoria Announced

Nominees for the 2026 Australian of the Year Awards for Victoria include sisters bringing children and aged care residents together, a brain cancer research fundraiser, a former ballet dancer turned advocate for people with disabilities, a gardener, a man giving elderly people a safe place to live, a woman saving our wildlife and a geologist who helped rescue workers from a collapsed tunnel.

The nominees are:

## 2026 Australian of the Year for Victoria

- Carrie Bickmore OAM - Brain cancer fundraiser (Melbourne)
- Hugh van Cuylenburg - Mental health leader (Alphington)
- Professor Arnold Dix - Geologist and disaster rescuer (Monbulk)
- Leila Sweeney-McDougall - Farmer's health filmmaker (Tatooon)

## 2026 Senior Australian of the Year for Victoria

- Thi Be Ha OAM - Refugee support volunteer (Glen Waverley)
- Uncle Leonard Clarke - Indigenous justice campaigner (Kikkabush Aboriginal Community, Purnim)
- Jane Edmanson OAM - Gardening educator (Pahran)
- Bryan Lipmann AM - Elderly homeless advocate (Richmond)

## 2026 Young Australian of the Year for Victoria

- Tim Harte - Scientist and disability advocate (Gnarwarre)
- Dr Shannon Kilmartin-Lynch - Innovative scientific researcher (Craigieburn)
- Abraham Kuol - Mentor and community leader (Narre Warren)
- Lucy Skelton - Public policy advocate (Kew)

## 2026 Local Hero for Victoria

- Fiona Glumac and Anna Glumac - Intergenerational childcare pioneers (Mornington)
- Carly McKinnis and Tammie Meehan - Rural mental health advocates (Ararat)
- Susan Moore - Wildlife rescuer and carer (Tarwin Lower)
- Linda Widdup - Farming community organiser (Carlisle River)



*Tim Harte - Scientist and disability advocate (Gnarwarre)*

The Victoria award recipients will be announced on Thursday 6 November 2025 in a ceremony at the Arts Centre Melbourne, which will also be available to watch online at [australianoftheyear.org.au](http://australianoftheyear.org.au).

They will then join other state and territory recipients as finalists for the national awards announcement on 25 January 2026 in Canberra.

## Community grant supports volunteer garden for Foodbank (from Barwon Water's newsletter)

This month, we're highlighting the generous work of one of our 2025 Community Grant recipients – the Central Baptist Church in Clifton Springs.

For 10 years, the Central Baptist Church has grown fresh produce in their on-site veggie garden for their local Foodbank service.

This garden is operated solely by volunteers, who are spending up to 10 hours a week maintaining the garden and harvesting fruit and vegetables.

"At our peak, we're able to provide 14 to 15 trays of vegetables at a time," says volunteer garden co-ordinator Tim. "We try to grow what the Foodbank needs, which is mostly leafy green vegetables."

Our support from the Community Grant program has enabled them to purchase a new water tank, which will significantly reduce their water bill and their potable water use. These savings mean more resources can be directed to the Foodbank and local families in need.

The funding has also supported the purchase of a shredder machine, which turns excess vegetation into mulch volunteers can use to cover the garden beds.





# Winchelsea Star COMMUNITY NOTICEBOARD

email [editor@winchelseastar.org.au](mailto:editor@winchelseastar.org.au) or leave a note at Winchelsea IGA

## 1<sup>ST</sup> MODEWARRE SCOUT GROUP

The 2025 Scout Monster Raffle is your chance to win one of over 130 fantastic prizes while helping our local Scouts.

Tickets are just \$2 and we get all of that!

The raffle will be drawn at 11am on Wednesday, 19 November

**1ST PRIZE: Suzuki Swift Hybrid GL 5 Dr Hatch (RRP: \$29,584)**

**2ND PRIZE: 3-day Uluru Adventure InclFlights for 2 People (RRP: \$3,790)**

**3RD PRIZE: Crown Posture Bedding Physio Mattress (RRP: \$2,999)**

And 132 more prizes. total value \$61,858!

Next year we have Cuboree coming up for our Cubs in September and then Jamboree for our Scouts in January 2027. Please help us to send our Scouts to these amazing adventures by buying a ticket or two.

<https://jo.my/1stmodda>

Marie McPadden Group Leader  
1st Modewarre Scout Group  
0409 330 147

## SMALL RUNNING GROUP

Sunday mornings 8am at La Hoot  
Small group - social run, jog and chat.  
We wait for slower runners and walk when one of us needs a rest. The aim is 10k, option of 8 or 5k it's up to you. To finish, a coffee at La Hoot.

## DIAMOND DOT ART SHOW

Pictures And Accessories  
10am-3pm Saturday 1 November  
Senior Citizens Rooms  
Harding Street, Winchelsea

## WINCHELSEA PICKLEBALL

Pickleball is back! The Tennis Club is running every Wednesday 7pm at the Winchelsea Leisure Time Centre! Only \$5 a person All equipment supplied  
Wear suitable footwear  
Lesley Mathison 0438 672 197

## REMEMBRANCE DAY COMMEMORATION AT THE CAIRNS ON 11 NOVEMBER 2025

The ceremony kicks off around 10.40 am.  
Community wreaths are welcome.

## WINCHELSEA TENNIS CLUB JUNIOR COACHING

Mondays from 3.30pm  
with experienced Nicole Mullen \$10

## WINCHELSEA COMMUNITY OP SHOP

The Winchelsea Community Op Shop provides quality clothing and homewares.  
10 Willis Street, Winchelsea Vic 3241  
<https://www.WinchelseaOpShop/>  
The Op Shop is a lifeblood of the Winchelsea community, providing great friendships to the passionate volunteers and our many customers.

## WINCHELSEA LIONS CLUB

**Large bags of pine cones for fire pits \$5**  
**Lions Club Christmas cakes**  
Available now.  
Contact Ray 0406 371 239

## Exploring New Ways To Access Library Services For Hinterland And Smaller Coastal Communities

Surf Coast Shire Council is exploring ways to improve library services for residents in its hinterland and coastal towns outside of Torquay.

Currently, Geelong Regional Libraries provide a mobile library bus for up to 15 hours per week in total across Aireys Inlet, Anglesea, Deans Marsh, Lorne and Winchelsea.

While the current service is useful, it's only available for community use for limited times when the vehicle is in town which can make it difficult for some to access. The bus is also ageing and facing increasing maintenance and reliability challenges.

With the vehicle nearing the end of its working life, Council is exploring other ways to make library services more convenient, reliable and accessible for everyone.

"We'd love to hear from those living in communities across our shire, outside of Torquay, about what's most important to them when it comes to library services," Cr Tony Phelps said.

"We're exploring new ways to deliver satellite library services so are considering more flexible and accessible options that might better meet community needs."

"Options such as permanent click-and-collect locations, library collections co-located in community facilities with regular staff visits, or 24/7 library lockers or cabinets where residents can browse, borrow and return items at a time that suits them," he said.

"With around one in three Surf Coast Shire residents holding a library membership, it's important that everyone has access to library services that they need."

"I urge our hinterland and smaller coastal community residents to take our short survey as your feedback will help shape what these services look like," Cr Phelps said.

Complete the survey by 30 November at [surfcoast.vic.gov.au/library](https://surfcoast.vic.gov.au/library).





# The Climate Report

Compiled by Judy Cameron

## Climate Change Is Becoming An Insurance Crisis

The Conversation UK

Climate change is driving more frequent and severe events, pushing traditional insurance models to their limits. Insurers are left with little choice but to raise premiums sharply or withdraw coverage entirely. When insurance becomes unaffordable or unavailable, households are exposed, property values fall, mortgages become harder to secure, and the risk of a wider financial crisis grows.....

.....When insurance becomes unaffordable or unavailable, households are left exposed and property values decline, making mortgages harder to obtain. This erosion of coverage threatens the wider financial system: banks rely on insured property as collateral, but without cover, that collateral rapidly loses value.

.....For the banking sector, this creates the risk of homes becoming stranded assets — uninsurable, unmortgageable and falling in value — leading to rising defaults and mounting losses. Unless lenders adopt climate-adjusted risk models that integrate physical hazards such as flooding, storms and heatwaves, they risk underestimating the true exposure of their mortgage portfolios.

## Wind & Solar Hits Record Share Of Sa Electricity Demand

Giles Parkinson, Renew Economy

South Australia — the country's most advanced renewable state — has run at an average of 75 per cent wind and solar over the past year, and hits levels of more than 100 per cent renewables (related to state electricity demand) every second day. The state government has an official target of reaching 100 per cent "net" renewables by the end of 2027.

## The Iucn Speaks Up

Alex Rafalowicz Maya - Director at Fossil Fuel Non-Proliferation Treaty

The International Union for Conservation of Nature (IUCN\*) just adopted the strongest language on fossil fuel supply that the multilateral system has ever seen.

Highlights of Text adopted with overwhelming votes of state and non-state members:

1. EXPRESSING DEEP CONCERN that fossil fuels — coal, oil and gas — are the primary cause of climate change and that governments plan to extract more than double the amount of fossil fuels compatible with the 1.5°C temperature limit by 2030;

2. CALLS ON States to continue to address the gap in the international governance of the fossil fuels supply, through a variety of international instruments, including a potential Fossil Fuel Non-Proliferation Treaty.

*\* IUCN is an international organization working in the field of nature conservation and sustainable use of natural resources. Founded in 1948, IUCN has become the global authority on the status of the natural world and the measures needed to safeguard it.*

## Corporate 'Middlemen' Mask Who Really Profits From Australian Fossil Fuel Projects, Report Warns

Henry Belot, The Guardian

Nominee companies — paid to be listed as shareholders on behalf of unnamed investors — could be reducing accountability over financial support of industry.

Three global banks are being paid to obscure who profits from 51 fossil fuel projects in Australia that produce 22m tonnes of carbon emissions each year, according to new analysis.

An analyst who authored the report says it highlights a "massive problem" in Australia that could be reducing the amount of scrutiny investors face for financial support of the fossil fuel industry.

US-based research group Global Energy Monitor (GEM) investigated the dominance of nominee companies in Australia, which are paid to be listed as shareholders on behalf of unnamed investors.

It found nominees were listed as major shareholders in 25 publicly listed energy firms in Australia, which collectively account for nearly 18% of the nation's fossil fuel emissions.

"Nominee companies are middlemen in corporate ownership: They hold shares in name only, masking the identity of the actual owners," said the report by GEM research analyst Gabe Louis.

This makes it incredibly difficult to pinpoint who is the actual shareholder. With no rules on nominee companies, fossil fuel backers can profit while staying hidden from public scrutiny."

The report found almost all nominees in Australia were subsidiaries of the world's largest banks....

.....The report found nominees were listed as owners of close to 70% of Origin Energy's shares, two-thirds of Whitehaven Coal's shares, and more than a third of AGL Energy's shares.

"Because shareholders can exercise voting rights and benefit financially, understanding these ownership structures provides a clearer picture of which actors are connected to Australia's fossil fuel sector," Louis said.

"While there's a lot the Australian government will need to do to hit its new climate target, making the ownership of fossil fuel interests more transparent is a low-hanging fruit."



# Register Your Burn-Off

## Information on carrying out a private burn-off

Notifying Triple Zero Victoria about private burn-offs prevents unnecessary fire brigade response. Callers reporting an actual fire can then verify that the fire is a private burn-off. If this can't be verified a fire brigade will be asked to respond.

Before you notify us and carry out your private burn-off, ensure:

- You are following regulations or laws by CFA and your local council.
- You notify your neighbours if your activity will generate fire and smoke.
- Check the weather forecast for the day of the activity and a few days afterwards.
- Establish a gap in vegetation or fire break of no less than three metres cleared of all flammable material.
- There are enough people to monitor, contain and extinguish the burn safely and effectively.

Check CFAs 'Burning Off' page for more information.  
See [cfa.vic.gov.au/plan-prepare/how-to-prepare-your-property/burning-off](http://cfa.vic.gov.au/plan-prepare/how-to-prepare-your-property/burning-off)

## How to notify?

Register online on the website. This is the quickest and easiest way to register your burn off.

Please provide the following information about your burn-off when registering:

- Location
- Date and expected start and finish times
- Estimated size
- What you intend to burn

\* Please remember that emergency 000 calls will always take priority. Registering online is the fastest and simplest option.



## Electrify your home - Find us at the Winchelsea market!

The Geelong Sustainability team will be attending markets around the region to share tips and advice on how you can cut your energy bills, improve home comfort and take advantage of government rebates, planning tools and support.

We'll have a stall at the following markets - enjoy local produce, makers, creators and come learn how to electrify your home!

### Winchelsea Makers and Growers Market - Sunday 9 Nov, 9-2pm

You can find our events listed on our website  
[www.geelong sustainability.org.au](http://www.geelong sustainability.org.au) and Facebook.



Winchelsea Repertory Society Inc. Presents

# GRANNY GET YOUR GUN

A play by John Thomson & Rob Smith with the permission of Play on Words Pty Ltd

**FRIDAY 7<sup>th</sup> NOV**  
Supporting Winchelsea Bowls Club

**FRIDAY 14<sup>th</sup> NOV**  
Supporting Grovedale/Waurn Ponds Lions Club & Modewarre Cricket Club

**SATURDAY 8<sup>th</sup> NOV**  
Supporting Winchelsea Primary School & Winchelsea CFA

**SATURDAY 15<sup>th</sup> NOV**  
Supporting Winchelsea Repertory Society

**Globe Theatre, Winchelsea**  
17 Willis St, Winchelsea

Doors open at 6:30pm. Patrons must be seated by 7pm.  
Tickets are \$60 each and include a 3 course meal (BYO drinks).  
Patrons encouraged to come dressed in Country/Western theme!  
Tickets to be purchased through Trybooking and will close one week prior to each performance for catering purposes.  
<https://www.trybooking.com/D1WZY>

## Thank you Haidee Benning and the Star for the strong opinion piece 'Community input needed for Winchelsea Swimming Pool to be at it's best.'

I find myself wrestling with ideas a lot. I remember slowly becoming conscious to the idea that one could actually mess around with creative play as late as secondary school. It seemed to provide joy and relief, it must be said of Christies Beach, in South Australia. A stark struggle town suburban neighbourhood. A place to survive. That there could be a concerted examination of the idea of *imagination* just wasn't really a thing back then for me.

Suddenly everywhere I look here in Winchelsea I see imagination at work. I see it in the recent writing of Haidee Benning, in the new layout, typography and graphics evident here in *The Star*. The passionate and articulate focus of John Tebbut as President of Growing Winchelsea. The renovation of the RSL Memorial Grandstand in its Centenary year. The Arboretum Trail activity in planting how many trees on avenues of light and shade, as it marches toward the cemetery. *Movie Club* thriving within the restored *Globe*, it's luscious flooring and new audio equipment. The tireless persistence of the many, many community groups and volunteers around town, which definitely doesn't go unnoticed.

Even stumbling around the WA State Library last month I drifted past the 'new books' stand and was taken

by one soft cover titled '*Strategic Imagination: Essays in Honour of Brendan Sargeant*' (Princeton University Press). I picked it up, a tad unsure but there was something compelling about it. For starters, it's relatively new, and it implied in just two words that there could be a strategy associated with 'imagination'! I spent the rest of that hot day happily ensconced in that read. Not to mention the history of '*An Australian Strategic Imagination*.'

My curiosity re-invigorated. Got me really thinking about the idea of imagination, what it is, and how strategy applies. It's well worth a read - however I can't do justice to it here. Anyway, here's to the untold imagination found around town - and afar. It's everywhere, and it's a good thing. An imaginative vision has no boundaries, at least until we choose to put them up.

Then on top of that, to be transfixed by the ABC 'Catalyst' show asking "Is robotics the future of cattle farming?" Strategic imagination may well rain down upon us. For those who haven't seen it, check it out. A lot to do with vision.

Richard Butcher



New medium density housing, White Gum Valley, WA (Photography: R Butcher 2005)

## Shed Talk – Expert Panellists To Take People Inside The Film Industry

Expert panellists will draw on decades of experience taking aspiring creatives behind the cameras and inside the film industry at a Surf Coast Shire Council Shed Talk.

The professional development event will reflect on aspects of the industry from acting and production to distribution and potential careers.

Mayor Cr Mike Bodsworth encouraged would-be film-makers, students and people curious about the film industry to attend.

"People will be able to hear first-hand stories from professionals working across the screen sector and gain insider insights and advice on breaking into film and TV," he said. "There will be inspiration and practical advice

highlighting challenges and opportunities in the industry, as well as opportunity to network with local industry participants and others."

### Event details:

**When:** 12pm - 2pm Sat 22 Nov

**Where:** Multi Arts Centre, Shoestring Playhouse, 77 Beach Road, Torquay

**Cost:** No charge to attend.

Panellists will be:

**Nicole Freeman:** Actor, producer and founder of Geelong-based production company Freeman Films which creates story-driven content for businesses, community organisations and events. Nicole specialises in managing productions from creative development to final delivery, with focus on crafting authentic, engaging stories.

**Meryl Whiteside:** Meryl's career has included production, direction, lighting, continuity, choreography and performing, from television and film dramas to children's touring shows, and she has her own YouTube travel show Aussie

Boomers Travel. Meryl is an inaugural committee member and vice-president of Torquay's Multi-Arts Centre, and through her role with Geelong Waterfront Film Foundation is passionate about championing the region's unique landscapes and creative talent.

**Leslie Morris:** A film distribution professional with more than a decade of experience releasing content across the globe. His work has centred on bringing films to international audiences, adapting to new industry trends and advances in digital distribution, and building strong relationships with video on demand platforms and broadcasters worldwide.

Council's regular Shed Talks are all-inclusive professional development sessions for people working in, or interested in working in, creative fields.

There is no charge to attend these events but bookings are essential. People can book for Inside The Film Industry via [surfcoast.vic.gov.au/ShedTalks](http://surfcoast.vic.gov.au/ShedTalks).





## Call for Tenders

### Coordination of 'Christmas in Winchelsea 2025'

Growing Winchelsea Inc. invites individuals or organisations to put forward an Expression of Interest for Coordination of Christmas in Winchelsea 2025 this December. *This has been made possible by the generous sponsorship of Winchelsea Star.*

#### About Christmas in Winchelsea

Running from 6-21 December 2025, this event features family-friendly activities, local business participation, and community competitions, including:

- **Carols by the Barwon** (6 Dec): Evening of live music, food vans, and community carols along the Barwon River.
- **Christmas Market** (7 Dec): Family market with Santa, food, festive stalls, and popular "Hidden Elf" fun.
- **Winchelsea Elf Trail** (8-21 Dec): Local businesses host hidden elves offering festive activities and promotions.
- **Twinkle Trees Competition**: Families decorate timber trees for installation along Main Street.
- **Christmas Lights Competition**: A Lions Club initiative lighting up Winchelsea homes and streets.
- **Prize Draws & Family BBQ** (21 Dec): Celebration and announcement of competition winners.

The event is promoted through the Winchelsea Star Christmas Feature and supported by local groups including the Lions Club, Men's Shed, Winchelsea Star, Community Bank Winchelsea & District, and the Surf Coast Shire.

#### About the Role

The Coordinator will oversee planning, logistics, sponsorship support, and community liaison to ensure successful delivery of the program. Planning is already well advanced.

#### Key Dates

- Applications close: 30 October 2025
- Event period: 6-21 December 2025
- Contact for Tender Brief: [secretary@growingwinchelsea.com](mailto:secretary@growingwinchelsea.com)



## 2025 Christmas Lights Competition Winchelsea Lights Up for Christmas

### Growing Winchelsea

The festive season is set to sparkle again as the Winchelsea Lions Club, in partnership with Growing Winchelsea, launches the 2025 Christmas Lights Competition.

Residents are encouraged to decorate their homes and register to take part in this year's dazzling display. **Entries close Wednesday 21 November 2025**, with judging by the Lions Club commencing early December.

"Let's connect our town with lights, laughter, and festive spirit as neighbours decorate their homes and share the joy of Christmas," said Graham Kenafacke, President Winchelsea Lions.

A family BBQ and presentation will be held on Sunday 21 December 2025 at 1pm at the Mud Hut, where winners will be announced.

Registered homes will feature in the popular Winchelsea Star Christmas Lights Trail feature on 2 December 2025. Additional copies will be distributed throughout the community to ensure everyone can enjoy the trail.

Entry forms are available at: [www.growingwinchelsea.com](http://www.growingwinchelsea.com)

#### Completed entries or inquiries can be directed to:

Elaine Atkinson, Growing Winchelsea Secretary  
[secretary@growingwinchelsea.com](mailto:secretary@growingwinchelsea.com) 0458 009 616



Winchelsea Lions Club  
PO Box 78, Winchelsea VIC 3241  
[winchelsea.vic@lions.org.au](mailto:winchelsea.vic@lions.org.au) 0448339003  
<https://winchesealionsclub.org.au/>

### REGISTRATION FORM

#### Best Christmas Lights Display Competition 2025

Name: \_\_\_\_\_

Address of Display: \_\_\_\_\_

Phone: \_\_\_\_\_

Email: \_\_\_\_\_

#### Permission

☐ I give permission for my home / business to be photographed and/or included in the Winchelsea Christmas Lights Trail, published in the Christmas Program produced by Winchelsea Star and available from Monday 1 December 2025.

Signature: \_\_\_\_\_ Date: \_\_ / \_\_ / 2025

#### Important Information

- Entries close: 21 November 2025
- The Christmas Lights Trail program will be available throughout Winchelsea in the lead-up to Christmas from 1 December 2025.
- Winners will be announced at the Family Christmas BBQ Sunday 21 December 2025 at the Mud Hut at 1.00 pm
- Prizes awarded by the Winchelsea Lions Club.

# Treaty Legislation Passes Parliament

Victoria has made history as the first state or territory in Australia to negotiate a Treaty with First Peoples, following the passage of the Statewide Treaty Bill through Parliament.

This landmark legislation paves the way for a new relationship between First Peoples and the Victorian Government - one built on respect, trust, and integrity.

The Statewide Treaty Bill will be signed by the Victorian Government and First Peoples' Assembly in coming weeks when the Governor provides Royal Assent to the Bill.

The Treaty Agreement will commence through a ceremonial exchange between the Victorian Government and First Peoples' Assembly in a public event at Federation Square on Friday, 12 December 2025.

Treaty is a chance for all Victorians to move forward together.

Families are better off when they have responsibility over their lives and Aboriginal families are no different.

Treaty is a pathway to acknowledging the past and making real, practical changes to achieve better outcomes for First Peoples in Victoria and close the gap.

## TIP TRUCK HIRE

- \* **FRONTEND LOADER**
- 4 IN 1 BUCKET**
- \* **DRIVEWAYS**
- LEVELLED OFF**
- \* **RUBBISH REMOVAL**
- \* **GRASS SLASHING**
- & RIDE ON**
- MOWER JOBS**

**VINCE**  
**0412 840 704**



**mainly music**  
est. 1990

**Fun, Interactive music sessions for**  
pre-school children (0-4 y.o.) and  
parents/caregivers

**When:** Mondays from 10 to 11 am  
(runs during school terms)

**Where:** St Thomas' Hall  
25 Barwon Tce.

**To Enquire ring: 0407838256**



**Winchelsea  
Supermarket**

Trading Hours  
**Monday to Saturday**  
8.30am to 7.30pm

**Sunday**  
10am to 7pm

**Ph: 5267 2676**  
29 Main St, Winchelsea

**Knuckey's Winchelsea**  
**Ph: 5267 2011**

Knuckey's have in stock a complete range of batteries to suit tractor, heavy machinery, cars, utes

The largest range of the best oil for your vehicles—**CASTROL**—  
'when only the best will do'

The largest range of V belts.  
A, B, C, D M Sections  
Bolts and nuts for all occasions  
Steel cut to size

## WINCHELSEA MEN'S SHED

*For the Community*

**NEW MEMBERS WELCOME**  
Every Wednesday from 9.30am  
51 Hesse Street, Winchelsea

**KINDLING/OFFCUTS** \$7.00 bag  
Pickup Wednesdays 9.30-2.30  
For delivery, call Bill 0438 083 373

**NESTING BOXES** Birds/animals

**NEED A JOB DONE?**

Woodworking, Furniture Repairs  
Call in Wednesdays to order

Ray Atkinson (Co-ordinator)  
0407839139  
winchmenshed@gmail.com



**WORPEL  
CUSTOM  
FURNITURE**

- BESPOKE TIMBER FURNITURE

- TIMBER VANITIES

- BARNDOORS

- KITCHEN, BATHROOM & WARDROBE JOINERY

- REPAIRS & RESTORATION

**0439013145**

[worpelsam@yahoo.com.au](mailto:worpelsam@yahoo.com.au)

25A Alsop Drive Winchelsea



## CONCRETER

- \* **DRIVEWAYS**
- \* **FOOTPATHS**
- \* **KERB & CHANNEL**
- \* **GARAGES & SHED SLABS**
- \* STEPS**
- \* **WHEELCHAIR RAMPS**
- \* **VERANDAHS**
- \* **PATIO AREAS**
- \* **PLAIN OR COLOURED**
- CONCRETE**
- \* **CONCRETE CUTTING**
- & REMOVAL**

**VINCE**  
**0412 840 704**





## Digi Tech - Week 4

Our **Prep** students have been exploring the concept of personal data, learning to identify what information is safe to share, and what should stay private, when interacting online. We've been inspired by the stunning picture book *I Saw, We Saw*, which has sparked discussions and activities around this important topic.

Our **Grade 1/2** students wrapped up their Cyber Safety unit with some fabulous role plays and creative media work. They planned and recorded their own news bulletins to teach others how to stay safe online.

In **Grades 3/4**, students have been delving into the world of data representation, experimenting with secret codes and ciphers as they learn how information can be encoded and decoded in different ways.

Our **Grade 5/6** students have embarked on their journey to becoming web designers! With a focus on user interface design, they've been analysing a range of websites, evaluating usability, design, and functionality as they prepare to create their own.



# What's on Weekly

## MONDAY-FRIDAY

### WINCHELSEA COMMUNITY HOUSE

9am-2pm, 28 Hesse St, Winchelsea  
(03) 5267 2028

### WINCHELSEA TOY LIBRARY

9am-2pm (03) 5267 2028  
Winch Community House,  
28 Hesse St, Winchelsea

## MONDAY-SATURDAY

### WINCHELSEA HEALTH CLUB

Accessible - 24 hours  
Eastern Reserve, 70 Hopkins St  
5267 2336

## MONDAY

### CO-WORKING & STUDYING SPACE

Mon and Thurs 9am-2pm \$10  
Winchelsea Community House  
28 Hesse St, Winchelsea  
(03) 5267 2028

### MAINLY MUSIC

10-11am (school terms)  
Interactive Music 0-4yrs  
St Thomas' 25 Barwon Tce 0407838256

### WINCHELSEA GIRL GUIDES



4.30pm-6pm (School term)  
St John's, Mercer /Harding St  
Yvonne Orchard 0448 672 630  
Lily Dell Rennie 0428 936 441

### 1ST MODDA/ 1ST WINCH SCOUTS



**Cubs:** 6:30-8pm (School term)  
Modewarre Hall, Cape Otway Rd  
Marie McPadden 0409 330147

### VINYASA YOGA

7pm \$25 Winchelsea Shire Hall,  
28 Hesse St, Winchelsea  
(03) 5267 2028

### GROWING WINCHELSEA ANNUAL GENERAL MEETING

Monday 10 November 2025 7-8pm  
Shire Hall, Hesse St Winchelsea  
secretary@growingwinchelsea.com

## TUESDAY



Senior Citizens Centre,  
36 Harding St, Winchelsea  
Elaine Atkinson 0458 009 616

### 1ST MODDA/ 1ST WINCH SCOUTS



**Joey's:** 5-6pm (School term)  
**Scouts:** 6:30-8:30pm (School term)  
Modewarre Hall, Cape Otway Rd  
Marie McPadden 0409 330147

### ZUMBA DANCE

Combined Zumba and Gold class  
6:00pm-7:00pm @The Globe Theatre.  
Simone Dunmore: 0468 375 036  
zumbawithsimone09@gmail.com

## WEDNESDAY

### WINCH WALKERS

9:30-10.30am  
Mud Hut (Opposite La Hoot Cafe)  
Barwon Terrace, Winchelsea  
ralextander@hesse.vic.gov.au

### WINCHELSEA ZUMBA DANCE

Combined Zumba Fitness and Gold class.  
6:30-7:30pm @The Globe Theatre.  
Simone Dunmore: 0468 375 036

### WINCHELSEA MEN'S SHED

9.30am 51 Hesse St, Winchelsea  
Ray Atkinson 0407839139  
winchmenshed@gmail.com

### SENIOR CITIZENS CENTRE

Wednesdays 1- 3.00 pm  
36 Harding St, Winchelsea  
Jean Shinnars 52672263, 0427672263  
jeanshinnars@gmail.com

### MOTHER GOOSE SONG & RHYME

2pm (School term) FREE  
Winchelsea Community House,  
28 Hesse St, Winchelsea

### WINCHELSEA HISTORICAL SOCIETY

Wednesday 1-4:pm, Friday 10am-3pm  
Hesse St, Winchelsea

### STITCH IT, DONT DITCH IT!

2-4pm Wednesdays from 12 Nov  
Winch Community House, Hesse St  
SEWING MACHINE \$ & OVERLOCKER  
AVAILABLE  
Gold Coin donation

### KIDS ART & CRAFT SESSIONS

4-4.45pm fortnightly Age 5+  
\$15 per session or \$60 term  
Winchelsea Community House  
28 Hesse St, Winchelsea 5267 2028

### MEL'S DANCE CENTRAL

Afternoons/evenings Pre-school - teens  
Winch Senior Citizens Club  
www.melsdancecentral.com.au

### CWA WINCHELSEA

7-8.30pm 2nd Wed monthly  
Senior Citizens, Harding St  
winchelsea.cwa@gmail.com



### SES WINCHELSEA

7.30pm 132500  
323 Mousley Dr, Winchelsea



## THURSDAY

### CHAT WITH YOUR COUNCILLOR

10am-12pm First Thursday of month  
Winchelsea Shire Hall 28 Hesse St,

### COWORKING & STUDYING SPACE

9am-2pm \$10 5267 2028  
Winch Community House, 28 Hesse St

### WINCHELSEA PLAYGROUP

10am-12pm (School term) \$5  
St Thomas Hall, 27 Barwon Tce  
winchseaplaygroup@gmail.com

### DON'T LET SCAMMERS CATCH YOU OFF GUARD

Thursday 30 October 10- 11.30am  
Winchelsea Shire Hall  
Morning tea provided

### WINCHELSEA PICKLEBALL

10-11.30am  
Leisure Time Centre, Gosney St  
Lesley Mathison 0438 672 197

### WINCHELSEA KNITTING GROUP

10.30am-12pm FREE  
Winchelsea Community House,  
28 Hesse St, Winchelsea  
(03) 5267 2028 (03) 5267 2028



# October/November

## Community Events

THIS is a recurring calendar. Please confirm event details with the organiser/venue if you'd like to attend.

To add an event to the calendar, please email [news@winchelseastar.org.au](mailto:news@winchelseastar.org.au)

### MAT PILATES

6.45pm \$25 Winchelsea Shire Hall,  
28 Hesse St, Winchelsea  
(03) 5267 2028

### HELEN MARY KINIMONTH KINDERGARTEN ANNUAL GENERAL MEETING

Thursday 13 November 2025 7pm  
HMK Kinder/Church Hall  
32 Hesse St Winchelsea

### WINCHELSEA MOVIE CLUB

7.30 (3rd Thurs each month)  
Globe Theatre, Main St, Winchelsea  
[growingwinchelsea.com/project/  
winchelsea-movie-club/](http://growingwinchelsea.com/project/winchelsea-movie-club/)

## FRIDAY

### TAI CHI

9am-10am \$10 5267 2028  
Winch Community House, 28 Hesse St

### COMMUNITY FOODBANK

12-2pm 30 Hesse St, Winchelsea  
0417 848 292

### PHONICS WITH ROBOT REG

10.30am (1-3 yrs) 11.30am (3-5 yrs)  
(School terms)  
[www.robotreg.com.au/pages/shae](http://www.robotreg.com.au/pages/shae)

### CHATTY CAFÉ



10.30am-12.30pm, Gold Coin Donation  
Winch Shire Hall, 28 Hesse St, Winchelsea  
5267 2028

### WINCHELSEA HISTORICAL SOCIETY

Friday 10am-3pm  
Hesse St, Winchelsea

### WINCHELSEA REPERTORY SOCIETY 'GRANNY GET YOUR GUN'

Friday 7, 14 November 2025 7pm \$60  
Globe Theatre, 7 Wills St Winchelsea  
[www.trybooking.com/DFWZY](http://www.trybooking.com/DFWZY)

### WINCHELSEA SENIOR CITIZENS

Fridays 1.00 pm - 3.00 pm  
36 Harding Street, Winchelsea  
Jean Shinnars 52672263, 0427672263  
[jeanshinnars@gmail.com](mailto:jeanshinnars@gmail.com)

### WINCHELSEA RSL

7.30 21 Nov, 12.00 19 Dec  
Winchelsea Men's Shed,  
Hesse St, Winchelsea  
David Loone 0488 165 109

### GEELONG REGIONAL LIBRARY (MOBILE) 2-5pm

Old Shire Hall, 28 Hesse Street  
0408384331 (During scheduled stops)

## SATURDAY

### PARKRUN



8am Trebeck Reserve  
Sussex St, Winchelsea  
[www.parkrun.com.au/trebeckreserve/](http://www.parkrun.com.au/trebeckreserve/)

### FIRST AID & CPR TRAINING

Sat 8 November  
Winchelsea Shire Hall 28 Hesse St  
Full Training 8.30-2.30 \$170  
Refresher 8.30-10.30 \$70  
5267 2028

### WINCHELSEA LIONS CLUB IGA BBQs

9 -12pm first Sat of month outside IGA.  
Proceeds to IGA Community Chest.

### RELOVED MARKET

9-1.30pm Sat 15 Nov  
Winch Community House 28 Hesse St  
(03) 5267 2028

### WINCHELSEA LAND AND RIVERCARE Working Bee



First Saturday of the month 9am  
Meet at Guye Reserve, Barwon Terrace  
Rod Atone 0428 549318  
Stewart Mathison 0428 672054

### WINCHELSEA STAR PRODUCTION/COFFEE MEETING

9-11am (Last Sat monthly)  
La Hoot Cafe, Main Street  
[www.winchelseastar.org.au](http://www.winchelseastar.org.au)

### CHRIST CHURCH BIRREGURRA OPEN GARDENS 2025

Sat/Sun 1/2 November 10-4pm  
\$10 one garden /\$30 three gardens  
Incl tea/coffee 5236 2655

### WINCHELSEA CROCHET GROUP

1.30pm Every 2nd Saturday \$5  
Winch Community House, 28 Hesse St,  
Vee 0467 219 227

### ST JOHN THE BAPTIST CATHOLIC CHURCH

Mass 6pm each week  
Harding St, Winchelsea 0404598558

### MODEWARRE BUSH DANCE

Saturday 8 November 5.30pm  
Family \$25 Adult \$10 Child 5  
Modewarre Hall, Cape Otway Road

### WINCHELSEA COMMUNITY DINNER

6.30pm (Last Sat each month)  
Hall, Harding St Winchelsea  
Bring plate & gold coin donation if you can

### WINCHELSEA REPERTORY SOCIETY 'GRANNY GET YOUR GUN'

Saturday 8, 15 Nov 2025 7pm \$60  
Globe Theatre, 7 Wills St Winchelsea  
[www.trybooking.com/DFWZY](http://www.trybooking.com/DFWZY)

### DEANS MARSH PRIMARY SCHOOL 150 BIRTHDAY PARTY

Saturday 8 November  
Bush band, student performances  
5236 3264

## SUNDAY

### RUNNING GROUP

8am Meet at La Hoot,  
Main Street Winchelsea



### WINCHELSEA COMMUNITY MARKET

9-1pm, 1st Sunday monthly (except Nov)  
Shire Hall car park, Main St Winch  
[growingwinchelsea.com/project/  
winchelsea-community-market/](http://growingwinchelsea.com/project/winchelsea-community-market/)

### GEELONG SUSTAINABILITY WINCHELSEA MARKET

Sunday 9 Nov, 9-2pm  
[www.geelongsustainability.org.au](http://www.geelongsustainability.org.au)

### WINCHELSEA UNITING CHURCH

Service 9.30am each week  
Hesse St, Winchelsea 0475 777 301  
[uca.winchelsea@gmail.com](mailto:uca.winchelsea@gmail.com)

### ST THOMAS' ANGLICAN CHURCH

10am each week  
Barwon Tce, Winchelsea  
0477 672 042,  
[stthomaswac@gmail.com](mailto:stthomaswac@gmail.com)



**Winchelsea Community House Inc.** A6247K  
 28 Hesse Street, PO BOX 75, WINCHELSEA, Vic. 3241  
**Phone:** (03) 5267 2028 **Email:** [manager@winchhouse.org.au](mailto:manager@winchhouse.org.au)  
**ABN:** 48 932 340 254

# FIRST AID & CPR Training

**SAT NOVEMBER 8TH**

**Winchelsea Shire Hall**

**Full First Aid Training \$170** 8.30am - 2.30pm

**CPR Refresher \$70** 8.30am - 10.30am



Register Now  
[manager@winchhouse.org.au](mailto:manager@winchhouse.org.au)



Call  
 03 5267 2028



# RSA COURSE

**Tuesday 11<sup>th</sup> Nov 6pm - 10pm**

**At Winchelsea Community House**

**Contact 03 52672028 or**

**[manager@winchhouse.org.au](mailto:manager@winchhouse.org.au)**



## WINCHELSEA TODDLER ACRO

THURSDAY AFTERNOONS

2-4 YEARS

WINCHELSEA SHIRE HALL

\$12 PER CHILD - CASH OR CARD AVAILABLE -

PAY AS YOU GO

DM TO ENROL

Contact Jacque - 0448046551 | [@jacquedancestudio](https://www.instagram.com/jacquedancestudio)

JACQUE'S DANCE STUDIO PRIORITISES ON A PRESSURE FREE, FRIENDLY AND WELCOMING ENVIRONMENT FOR CHILDREN OF ALL ABILITIES TO ENJOY! ACRO IS A COMBINATION OF DANCE AND GYMNASTICS, FOSTERING BALANCE, COORDINATION, STRENGTH, AGILITY, SAFE TUMBLING AND GROUP STUNTS.

WWCC

DIPLOMA QUALIFIED EARLY YEARS EDUCATOR  
 FIRST AID & CPR



# WINCHELSEA RE-LOVED MARKET

**SATURDAY 15TH OF NOVEMBER**

**9AM - 1.30PM**

**AT THE SHIRE HALL**

**PRE-LOVED  
 CLOTHING,  
 HOMEWARES,  
 ANTIQUES,  
 BOOKS,  
 COLLECTABLES.**

## SUSTAINABILITY

SHOPPING FOR RECYCLED/PRELOVED ITEMS IS ONE OF THE MANY WAYS WE CAN HELP THE ENVIRONMENT BY AVOIDING FAST FASHION AND HELPING WITH OVERPRODUCTION.

## QUALITY

A GREAT PLACE TO FIND QUALITY AND BRANDED FASHION AND HOMEWARES AT GREAT PRICES!

## SUPPORT OUR COMMUNITY

THE RE-LOVED MARKET HELPS RAISE FUNDS TO SUPPORT THE WINCHELSEA COMMUNITY HOUSE AND OCCASIONAL CARE AND OUR FOOD AND COFFEE VENDORS ARE ALL LOCAL TOO!

**Go with the Flow  
 Crepes & Coffee**

**and**

**The Smooth Vibes Van!**

**FACE PAINTING  
 WITH ARTZZY**

**JAZZY**

**BOOK A STALL**

<https://events.humanitix.com/winchelsea-re-loved-market>

**CONTACT:** [shirehall@winchhouse.org.au](mailto:shirehall@winchhouse.org.au) 0352672028



**WINCHELSEA**

# YOGA & MAT PILATES

**TERM 4 2025**

**VINYASA YOGA**

**MONDAY EVENINGS 7PM**

**MAT PILATES**

**THURSDAY EVENINGS 6.45PM**

**5 CLASSES \$105**

**10 CLASSES \$190**

**UNLIMITED CLASSES \$210**

**CASUAL CLASS \$25**



Email: [shirehall@winchhouse.org.au](mailto:shirehall@winchhouse.org.au)

What would you like to see  
 happening in Winchelsea?  
 Get in touch or drop in for a chat.



## Annual Report Shares How Council Supports Community Vision

From roads, sports facility and arts centre upgrades to drought support, sustainable urban growth guidelines and the new Winchelsea Pool, Surf Coast Shire Council has shared its wide-ranging achievements in the 2024-25 Annual Report.

Noted at the October Council meeting, the Annual Report has highlighted how Council continues to work towards fulfilling the community vision of leaving the Surf Coast better than we found it.

The report also outlines the performance of the organisation, which maintained a financially sustainable position in 2024-25.

Mayor Mike Bodsworth said the community was at the core of everything Council does. "Council provides more than 100 services to the local community and maintains more than \$1 billion worth of community assets to support both the growing local population and the 2.5 million people who visit the area annually," he said.

"It's pleasing that we've successfully delivered services and projects laid out in our previous budget. Personally, I've loved seeing the new Winchelsea Pool open for some summer fun, the lease approval for the Aireys Inlet Affordable Housing Project, and celebrating our grant recipients across the shire who make such a positive difference in their community."

Other Council achievements in 2024-25 included:

- Support for drought-impacted communities including advocacy against the Victorian Government's Emergency Services and Volunteer Fund levy, and freezing rates at 2024-25 levels for farm land.
- Adoption of the Urban Futures Strategy, a significant step in the aim of achieving sustainable growth.
- Reconstruction of netball courts at Anglesea's Ellimatta Reserve, Lorne's Stribling Reserve and Winchelsea's Eastern Reserve.
- Supporting Wadawurrung Traditional Owners Aboriginal Corporation to deliver Pilik Purriyn on 26 January.
- Implementation of a new Circular Economy Action Plan.
- The Multi Arts Centre refurbishment project.
- Progress on Wurdi Baierr Aquatic and Recreation Centre (with funding support from the federal and state governments) and Banyul-Warri Fields Hockey Pitch (funded by the state government). Construction continues on both projects in north Torquay.

"It's also important to acknowledge the essential services our community expects such as road, path and open space maintenance, early years and family child health programs, and helping residents prepare and stay safe during increasingly high-risk bushfire seasons," Mayor Bodsworth said.

Access the 2024-25 Annual Report via [surfcoast.vic.gov.au/AnnualReport](http://surfcoast.vic.gov.au/AnnualReport).

## Services & Activities In Winchelsea

<b>VLINE TRAIN SERVICES</b> <b>TO MELBOURNE:</b> Mon - Fri 6.21(coach) 07.55, 11.10, 14.04, 16.58, 19.21 Sat - Sun 9:34, 14.04, 16.58 19.18 <b>TO WARRNAMBOOL:</b> Mon - Fri 8.58, 11.51, 14.46, 17.28 (coach), 18.43, 20.53 Sat - Sun 8:48, 11.41, 14.46, 20.38	<b>SURF COAST MOBILE LIBRARY</b> <b>Cnr Princes Highway &amp; Hesse St, Fridays, 2pm-5pm</b> Parked in Hesse Street (outside Shire Hall) Fridays 2:00 and 5:00pm unless it is a Public Holiday.	 <b>WINCHELSEA GIRL GUIDES</b> All girls 6yrs-15yrs Welcome! Mondays 4.30pm-6pm (school terms) Catholic Church Hall, Harding St Winchelsea <i>Fun, friendship, and adventure. Teamwork, leadership skills, achieve goals, improve communities and grow in confidence.</i> 3 FREE sessions to come along and try. Yvonne 0448 672 630 or Lily 0428 936 441
 <b>COUNTRY WOMEN'S ASSOCIATION</b> 7pm second Wednesday of month Winchelsea Senior Citizens' Hall 36 Harding Street Winchelsea	<b>WINCHELSEA PLAYGROUP</b> Every second Thursday 10am-12pm St Thomas Anglican Church Hall cnr Barwon Tce and Hopkins St, Winchelsea Contact: Danni Menzies 0432019944 winchelseaplaygroup@gmail.com Facebook - Winchelsea Playgroup 2019 <b>New families welcome</b>	 <b>1st Modda &amp; 1st Winch SCOUT GROUP</b> <b>Joey's:</b> Tues 5-6pm (school terms) <b>Cubs:</b> Mon 6:30-8pm (school terms) <b>Scouts:</b> Tues 6:30-8:30pm (school terms) <b>Venturers:</b> Weds Modewarre Hall, Cape Otway Rd <b>Venturers:</b> Walton's Rd Venturer Den Contact Marie McPadden 0409 330147
 <b>Winchelsea and District COMBINED PROBUS CLUB</b> Senior Citizens Rooms, New members always welcome. Enquiries Lorraine 0417 467 927	<b>WINCHELSEA TRANSFER STATION</b> <b>55 Cressy Road, Winchelsea</b> Tuesday 2pm-4pm Saturday 1.30-3.30pm Thursday 2pm-4pm Sunday 9.30-12.30pm Closed Christmas Day, but open on other public holidays. <a href="http://www.surfcoast.vic.gov.au/disposalsites">www.surfcoast.vic.gov.au/disposalsites</a>	

## WINCHELSEA CONCRETING

• Driveways • Sheds • Decorative Concrete • Raft Slabs

**Robert Murphy**

☎ 0438 235 237

✉ winchelseaconcreting@outlook.com

## DownRyte Excavations



- Excavations
- Drilling and Piling
- Rock Placement
- Tree and Stump Removal

Sean Hunwick

Mobile: 0409 447 288  
Email: downryte@activ8.net.au

## direct TEMPORARY FENCING

FOR HIRE • SUPPLIED & ERECTED • 7 DAYS  
GEELONG - BELLARINE - COLAC - SURF COAST  
PHONE CAM 0417 310 800

# SOUTH-WEST — PAINTING — GROUP

**Contact us:**



0431 719 218



www.southwestpaintinggroup.com.au



matt@southwestpainting.com.au

## We specialise in:

- New Homes
- Texture Feature Finishes
- New and Old Cabinetry Coatings
- Commercial Projects
- Maintenance Work
- Residential Work
- Wallpapering
- Pre-Sale Painting
- Timber Decking Rejuvenations

## M & L DRAYTON

### PLUMBING SERVICES

REG No 24356 C/A No C02594

- Domestic and Rural Plumbing
- Roofing
- Sewerage & Septic
- LPG & Natural Gas Connections
- Motorised Drain Cleaning
- Backhoe Hire

**Phone Mark 5288 7244**

PO BOX 98 WINCHELSEA 3241

**Mobile 0428 520 142**



DRIVEWAYS, CARPORTS, CROSSOVERS,  
FOOTPATHS, SHED SLABS, STAIRS  
HOUSE SLABS, EXPOSED, SEALING & MORE

CONTACT ALISTER NOW FOR A QUOTE

☎ 0411871950

✉ AMACONCRETING1@GMAIL.COM





# Cromwell's Quirks

## Special (About the significance of being human)

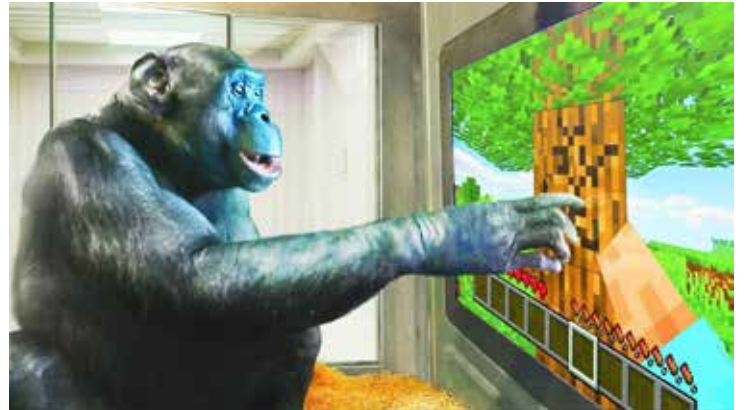
Cromwell Forgasen

### Week 2 of 2

As many of you might suspect by now, most of these articles are trafficking some semiotics theory or concern or so forth. For the purposes of this discussion, the brave new world of "Biosemiotics", (i.e. the study of the tokens organisms choose to use for communications and the meaning they attach to such tokens), is teaching us much about what it is to be human, for example, we are finding that we humans choose to communicate about some things that other organisms could, but simply wouldn't waste their metabolic resources on. Other organisms are quite competent with the sophisticated inference mechanisms underpinning abstract concepts, imagined possibilities and moral concerns, but they don't recognise celebrities, they might express great anger or frustration, but they don't rant; they can communicate about absentees but do not "gossip" per se. While some of them can learn over time about past, present and future from their Parents' example, (which i see as just another branch of semiotics yet to be formally recognised), none of them spend more time discussing plans than working on them. Maybe that's what makes us human?

Elephants are one of my favourites, some will carry small branches about with them as tools of industry, defence and even the occasional discipline, but every now and then, they will use them to carve lines into the dirt. Calves will draw higgledy-piggledy curves and lines with sticks and stones as they gradually play/learn the motor-skills required to control what images they can create in the dirt, corrected occasionally by their parents in ways we still don't understand. Humans being what they are, are loath to content their selves with such reactions as, "I don't understand", and despite elephants being so very obviously communicative across an host of other mechanisms, (infrasound through the ground as well as all the nuances of vocalisation, body language and touch, chemical signals, etc.), using unique names they know each other by and so forth, instead, humans feel forced to declare elephants could not be capable of self-expression, let alone art. (Do we even know if humans express their selves and are capable of art? If so, how do we know and would it be reasonable to apply the same criteria to other organisms, or is art something only humans are "allowed" to do?). Bower birds, beavers, spiders, honeybirds and many weaving birds, pufferfish to name but a few, are also known to create intricate patterns with meaning, with chimpanzees and beluga whales having been trained to paint so well as to fool art-critics.

Humans seem to understand semiotics, which when its all said and done, is thinking about the mechanics of our attempts to make meaning. Now for semiotics, you, (as an organism), require both meta-awareness, (as demonstrable with the Mirror Test), and meta-cognition, as tested by, firstly, the Escape/Decline Option test whereby an animal will not exert effort when it knows it will fail; secondly, the Information-Seeking test, where an organism will seek further information to achieve a task; thirdly, the Confidence-Judgements test, (aka betting), where an organism can be rewarded for judging the success/failure of



*Kanzi, (28Oct80 - 18Mar25),  
whom I look up to for his heroic efforts*

their own previous attempts; and fourthly, the Novel-Task test, (as championed by Confucius in his famous, "... to know what you know and what you do not know, that is true knowledge ..."), whereby an organism will demonstrate uncertainty and hesitation with regards to unfamiliar tasks. Believe it or not, there isn't much more to semiotics, (its becoming increasingly recognised as and integrated into, the cognitive sciences), and humans, well, some humans anyway, love their symbols and their meanings, but then again, so do rats, great apes and rhesus macaques, dolphins, all the corvids, elephants and even the cleaner-wrasse fish, so that can't be what's special about humans.

The late and lamented Kanzi the bonobo, famed for learning thousands of human words and many grammatical structures in their contexts, helped us greatly in advancing biosemiotics to a practical art and science, but sadly, for all Kanzi's great efforts, (some elements of english were extremely difficult for him), and achievements in learning English, there was relatively little advance in human understanding of natural Bonobo languages. (May be now people will understand what kind of lessons Kanzi could have taught the scientists.) This might count as an anthropological endeavour that another organism has achieved, which humans have not.

It's at just such junctures one can't help but recall those immortal words of Douglas Adams, who, in his "Hitch Hikers Guide to the Galaxy", declared:

"... man had always assumed that he was more intelligent than dolphins because he had achieved so much, the wheel, New York, wars and so on, whilst all the dolphins had ever done was muck about in the water having a good time. But conversely, the dolphins had always known they were far more intelligent than man, for precisely the same reasons ..."

Which raises a very semiotic concept indeed: are we still talking the same language when we can't even agree what meaning should be assigned to a token? ("... and even when a perfectly normal baby was born unto a perfectly normal couple on a perfectly normal night, it was a SIGN! ... " ;-)) May be humans are the special species who debate what meaning a token should symbolise. Quirky stuff indeed, so best wishes with all that,



Help is available  
Speak with someone today  
Available 24 hours

13 11 14



Winchelsea  
Community  
Foodbank

**Fridays, 12 - 2PM**  
30-32 Hesse Street Winchelsea

For more info, contact Tess  
healthpromotion@hesse.vic.gov.au  
0417 848 292



All welcome  
No eligibility requirements



**Moriac Community Network Inc**

**Car Boot Sale**  
Sunday 9<sup>th</sup> Nov  
8am - Midday

Newling Reserve - Hendy Main Road

**CAR BOOT SALE**

All sites - booked out!  
Everyone welcome.  
We're sure you'll treasure or two.  
Sausage Sizzle! Tea & Coffee Available

ALL PROCEEDS TO  
SUPPORT THE  
MCN COMMUNITY SHED

**MORIAC**  
COMMUNITY NETWORK

GET YOUR BOOTS ON AND  
KICK UP YOUR HEELS

AT THE  
MODEWARRE HALL

**BUSH  
DANCE**



Starring



Family \$25  
or Adult \$10  
Kids \$5



Sausage Sizzle & Supper provided

**Saturday 8th November**

5:30pm

**DEANS MARSH 150 YEARS 1875-2025 Primary School**

Everyone's Welcome!

**150th Birthday Party**

Saturday 8<sup>th</sup> November 2025

**PROGRAM**

- 2:00pm - Billy Tea Bush Band
- 2:45pm - Welcome
- 3:30pm - Billy Tea Bush Band
- 4:15pm - Speeches
- 4:30pm - Student performance

**Special Guest:**  
Nicholas Ridiculous

**ALSO:**  
DEVONSHIRE TEA - GIANT SLIDE - SNACKS - HISTORY DISPLAYS - TOURS

deansmarshps.vic.edu.au 52 363 264

**DEANS MARSH 150 YEARS 1875-2025 Primary School**

**150th Birthday Memorabilia**

**\$10**  
Enamel Mug

**\$20**  
Keepsake Book

Use the QRcode to open the online order form or contact the school office on 52363264 for more information

**SCAN ME**

We'd love to see you!

**WINCHELSEA PLAYGROUP**

Each Thursday during school terms.  
Come along between 10AM - 12PM.  
Check out our Facebook Page for more information about the happenings of each session.  
Playgroup Leader - Donni Menzies  
Email: winchelseaplaygroup@gmail.com

**\$5 PER FAMILY**  
INCLUDES MORNING TEA & HOT DRINKS FOR CAREGIVERS

St. Thomas's Hall,  
27-29 Barwon Terrace,  
Winchelsea VIC 3241

Scan to be part of our Facebook Group

**Winchelsea Community Market**

First Sunday on the Month (except November)

Shire Hall  
9am to 1pm

**Upcoming Dates:**  
Nov 9th  
Dec 7th  
Jan 4th  
Feb 1st

Food, Produce, Coffee, Plants, Crafts  
Homewares, Candles, Bags, Skincare  
Jewellery, Soap + Baby Goods

Stallholders - Contact via Growing Winchelsea Inc Website (Scroll Down to Market)

**WANT TO JOIN PROBUS?**

Enjoy fellowship with other members  
Enjoy trips & outings  
Listen to guest speakers

**Contact Lorraine**  
0417 467 927



## Winchelsea Cricket Club

Hopkins St, Winchelsea, winchelseacricketchub1858@outlook.com



# Cricket News

**A- GRADE  
ROUND 5 - DAY 1  
RESULTS**

Winchelsea 5/105 VS Surf Coast 10/90

Shane Murdoch 49 not out	Shane Murdoch 5/8
Ray Edwards 23	Shane Currie 2/13
	Ricci Sauni 1/12
	Jarrold Groves 1/45

Sponsored by 

**B- GRADE  
ROUND 5 - DAY 1  
RESULTS**

Winchelsea 2/120 VS Surf Coast 10/90

Angus Leigh 56 not out	Shane Scott 4/14
Nick Bellman 20 not out	Matt Partridge 2/11
James Stephenson 20	Luke Lenehan 2/16
Todd Hardy 19	Nick Bellman 1/7

Sponsored by 

*All About* **Mowers & Chainsaws**

Repairs to all makes and models of ride on mowers, domestic mowers, pumps, chainsaws, brushcutters and small engines.

Trading Hours: Mon - Fri 8am - 5pm Saturday 8am - 12 noon

**5267 2266** Cnr Princes Hwy & Lennox St Winchelsea

[www.allaboutmowers.com.au](http://www.allaboutmowers.com.au)

[accounts@allaboutmowers.com.au](mailto:accounts@allaboutmowers.com.au)



**5234 6585 0417 385 984**

*For all your septic tank, grease traps and interceptor pits servicing.*

*Locally owned and operated*

## TRENCHES & HOLES PTY LTD.

GENERAL EARTHWORKS  
DRIVEWAYS  
TRENCHER  
KANGA

EXCAVATOR (3.5T & 6T)  
TIPPER TRUCK  
ROCK BREAKER  
POST HOLES & FOOTINGS

**PHILLIP ROBERTSON**

**PH. 0427 672 945**

A.B.N. 74006896896

**MRP**

**Steelworx**

Matthew Partridge  
p 0418 672 334  
[e.mrpsteelworx@yahoo.com.au](mailto:e.mrpsteelworx@yahoo.com.au)

**Welding Service**

- Onsite welding
- Farm maintenance
- Farm machinery & equipment repairs
- Cattle & sheep yards
- Custom built trailers
- Supply & install gates

# Winchelsea Churches



## Winchelsea Uniting Church

0475 777 301

uca.winchelsea@gmail.com  
Hesse St, Winchelsea 3241  
Services 9.30am Sundays

## St John the Baptist Catholic Church

0404 598 558

Father Joseph Panackal  
Harding St, Winchelsea 3241  
Winchelsea - St. John the Baptist  
@ 5pm Sat. NOV. 1, 8, 15, 29  
Meredith - St. Joseph  
@ 9am NOV. 16, 30  
Bannockburn - St. Mary MacKillop  
@ 11am Sun. NOV. 2, 9, 16, 23, 30  
Inverleigh - Sacred Heart  
@ 4pm Sun. NOV. 16

## St Thomas' Anglican Church

0448 687 588

Rev Christopher Duff  
Barwon Tce, Winchelsea  
Service 10am Sundays

## Thought for the Week

"In alchemy it is stated that whenever we define the space for which we are responsible, everything is given us within that space. It is as if the whole universe comes down and sits at our feet....ready to be used for God's plan on earth."

Have a Blessed week.

**John Bader,**  
Christian Pastoral Carer



**WINCHELSEA  
COMMUNITY HEALTH**



**STARTING 19<sup>TH</sup> NOVEMBER**



## FREE FOUR-WEEK DIABETES PROGRAM

This face-to-face program will empower you with the knowledge, tools, and confidence to live well with diabetes. Each session is run by our experienced multidisciplinary team of health professionals.

### WHAT YOU WILL LEARN

Our sessions cover all aspects of effective self-management, including:

- Understanding diabetes and treatment options
- Food choices and meal planning
- Exercise and movement
- Better sleep and stress management
- The diabetes cycle of care – and much more!

### REGISTER

If you or someone you know would benefit from this program, please contact:

communityintake@hesse.vic.gov.au ☎ (03) 5267 1248

# DANCE CLASSES

TAKING ENROLMENTS NOW  
FOR OUR WINCHELSEA STUDIO

PRE-SCHOOLERS - ADULTS  
CONTROLLED CLASS SIZES  
JAZZ - THEATRICAL TAP - CLASSICAL BALLET  
HIP-HOP - CONTEMPORARY DANCE

**ENROL TODAY**

WWW.MELSDANCECENTRAL.COM.AU





The Winchelsea RSL Sub-Branch invites you to attend the official opening of

# **Winchelsea Memorial Grandstand Upgrade Project**

## **Friday 14 November 2025**

**1.45pm arrival for a 2.00pm start**

**Winchelsea and District Soldiers' Memorial (1914 - 1918)**

**70 Hopkins St, Winchelsea**

Light afternoon tea to follow the official proceedings.

This project has been delivered by Winchelsea RSL Sub-Branch in partnership with Eastern Reserve Community Asset Committee, Surf Coast Shire Council and the Victorian Government through the Veterans Capital Works Program (2023-2024).



Winchelsea RSL  
Sub Branch



# Shop local - Support our supporters

## DIRECTORY

### **ACCOUNTANT**

STS Accounting 5267 2673

### **AGRICULTURAL**

Southern Grain 5267 2351

### **ANTIQUES**

Antique Repairs 0428 672 704

### **AUTOMOTIVE**

SJR Automotive 0423 413 829

Winchelsea Auto 5267 3001

### **BANK**

Bendigo Bank 5267 3189

### **BUILDERS**

Alford Built 0408 583 362

Lupton Builders 0438 840 104

MGT Building 0409 433 687

### **CAFE**

Café La Hoot 0407 528 999

### **CHIROPRACTOR**

One Body 5267 2240

### **CHURCHES**

Anglican 0448 687 588

Catholic 0404 598 558

Uniting 0475 777 301

### **CLUBS**

Girl Guides 0448 672 630

Golf 5267 2660

Lions 4224 0226

Movie 0409 672 054

Probus 0417 467 927

Scouts 0409 330 147

### **COMMUNITY**

Community

House 5267 2028

Foodbank 0417 848 292

Mainly Music 0407 838 256

Men's Shed 0407 839 139

Playgroup 0432 019 944

RSL 0488 165 109

Senior Citizens 0427 672 263

Toy Library 5267 2028

### **CONCRETE**

AMA Concreting 0411 871 950

Vince Concreter 0412 840 704

Winchelsea Concreting 0438 235 237

### **DANCE**

Mel's Dance 0400 874 338

### **ELECTRICIAN**

Green Lead Electrical 0467 097 101

### **EMERGENCY**

Police 5267 2025

SES 1 32 500

### **ENTERTAINMENT**

COPACC 5232 9418

### **EXCAVATORS**

DownRyte Excavations 0409 447 288

Trenches & Holes 0427 672 945

### **FENCING**

Direct Temporary 0417 310 800

### **FRAMER**

R&K Creative Framing 5267 2192

### **FUNERAL**

Tuckers Funeral 5221 4788

### **FURNITURE**

Worpel Custom 0439 013 145

### **GYM**

Sunny Gym 0401 417 387

### **HEALTH SERVICES**

Hesse Rural Health 5257 1200

Winchelsea Medical 5292 8028

### **HIRE**

Colac Hire 5232 1177

Tip Truck Hire 0412 840 704

### **LAWYER**

Wighton's Lawyers 5221 8777

### **MOWERS**

All About Mowers 5267 2266

### **NURSERIES**

Oz Trees Nursery 5233 6280

### **OSTEOPATHICS**

Dr Kale Mazurek 0417 114 617

Winchelsea Osteo 5267 2948

### **PAINTER**

South-West Painting 0431 719 218

### **PLUMBERS**

M&L Drayton 0428 520 142

M&B Wood 0418 319 357

Simco Plumbing 0400 643 976

### **QUARRIES**

RAK Davis & Sons 5267 2094

### **REAL ESTATE**

Charles Stewart 5231 5400

Elders 0418 525 609

HF Richardson 5229 8017

### **SCHOOL**

Primary School 5267 2134

### **SPORTS**

Park Run 0408 102 802

Pickleball 0438 672 197

### **STEELWORK**

MRP Steelworx 0418 672 234

### **STORAGE**

Storage King 5267 3116

### **SUPERMARKET**

IGA 5267 2676

### **TAXIS**

Surfcoast Taxi 0408 325 992

Winchelsea Taxi 0429 672 888

### **VET**

Moriac Vet 0447 781 089

### **WATER**

Water Supply Specialists 5231 1861

Wazza's Water Cartage 0428 877 260

### **OZ TREES NURSERY & TREE PLANTING SERVICES**

- Affordable seedlings—over 200 species
  - Complete plantation service—farm forestry, shelter, aesthetics
  - Deep ripping & mound ploughing, Rotary bed forming
  - Our experienced staff will help you select species for your site conditions and needs
- Also available—tree planting tools, milk cartons, plastic tree guards & bamboo stakes



569 Warrowie Rd. Colac  
P: 5233 6280 F: 5233 6393  
E: info@oztrees.com.au  
W: www.oztrees.com.au  
Open Monday—Friday  
9am—4:30pm

Phone OzTrees for professional advice,

### **Water Delivery**



Stainless Tanker Up to 22,000 ltr loads  
Barwon Water Registered

Domestic & Rural Water Supplies

Call Wazza  
Mob: 0428 877 260  
Email: wazza@wazzas.com.au Web: wazzaswater.com

52672192
R & K Creative Framing
for all your framing needs

free quotes  
pension discount  
specialist in Age &  
Disability Modifications

Ray & Kim Jansen  
10 Witcombe st  
Winchelsea 3241  
0414672192

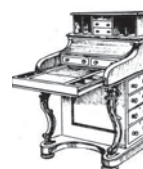
Ray
The Home  
Maintenance HANDYMAN

0414672192

## Antique Repairs

By Doug Burns est. 1976

- All Furniture
- French polishing
- Carving
- Veneering
- Wood Turning
- Porcelain



Unusual Requests Welcome

180 Barwon Terrace, Winchelsea

**0428 672 704**



# FOOD DOESN'T BELONG IN LANDFILL

**37%**  
of what's in our  
red-lid garbage  
bins is food.

Instead, feed  
the earth that  
grows our  
food.



**USE YOUR FOGO BIN FOR  
EVERY PEEL, CRUMB AND CORE**



Where does your FOGO go? Watch here - [surfcoast.vic.gov.au/FOGO](https://surfcoast.vic.gov.au/FOGO)



[surfcoast.vic.gov.au/FOGO](https://surfcoast.vic.gov.au/FOGO)



This advertising is supported by the Victorian Government through the Kerbside Reform Grant.



# SIMCO PLUMBING SERVICE

Domestic - Commercial - Rural

## 0400 643 976

- All general Plumbing and Gasfitting • Water tanks and Pumps
- Renovations and Extensions • Hot water and Heat pump
- Split system and Wood heaters • Roof and Gutter
- Septic and Treatment plants • Excavation, Bobcat and Tipper
- Driveways and Earthworks
- Blocked drains and CCTV Inspection

Simon McGillivray

Lic: 109610 Free Quotes, Fast & Friendly Service

**Winchelsea  
AUTO  
SERVICES**  
*One stop auto shop*

17 Alsop Drive

- ❑ LOG BOOK SERVICE
- ❑ AUTO ELECTRICAL
- ❑ TOWING
- ❑ AIR CONDITIONING
- ❑ CLUTCH & BRAKES
- ❑ TYRES
- ❑ WHEEL ALIGNMENT
- ❑ BATTERIES

## CAR, TRUCK REPAIRS & Roadworthys

**PH: 5267 3001**

**Mob: 0417 137 457**

# R.A.K. DAVIS & SONS

## CARTAGE CONTRACTORS

**WINCHELSEA**

SUPPLIER OF ALL QUARRY MATERIALS, TRUCK HIRE

CARTAGE OF GRAIN, LIME, GYPSUM & SUPER

**LANDSCAPE & GARDEN SUPPLIES**

56 WILLIS ST, WINCHELSEA

**Ph – 5267 2094**

**Ryan – 0438 672 281**

email: rakdavissons@gmail.com



**Generations of Care  
and Compassion.**

**Tuckers**  
Funeral & Bereavement Service  
... for a life worth celebrating



AFDA Member

PH: 5221 4788

www.tuckers.com.au

## PAPER RECYCLING

**Paper depot rear of  
Senior Citizens  
Rooms  
Harding Street  
NEWSPAPERS  
MAGAZINES  
PHONE BOOKS**



All money raised used  
for local community

**4224 0226**

**Wightons Lawyers**

Dispute Resolution & Litigation  
Debt Collection  
Property Law  
Wills & Estates  
Powers of Attorney  
Business Law  
Family Law  
By appointment only

22 Willis Street, Winchelsea  
ph. 5221 8777

www.wightons.com.au





# Winchelsea Football Netball Club Inc

Hopkins St, Winchelsea winchelseafnc@hotmail.com



# Junior Netball

Shae Callahan

## Winchelsea Junior Summer Competition Report

### Under 10s

Our Under 10s have continued to work hard each week, and even though we haven't had another win since that game a few weeks back, the improvement has been amazing to see. Their confidence and teamwork on the court has grown so much from where they began. They show up every week with big smiles, ready to learn, support each other, and have fun. We're so proud of how far they've come and can't wait to watch them keep growing! Congratulations Juliette for winning Player of the Match

### Under 11s Pink (Junior)

What a nail-biter of a match for Winch Pink this week! It was a tough and evenly matched game, with both teams giving it their all. There were plenty of intercepts and end-to-end action, keeping everyone on the edge of their seats.

Our Player of the Week; Chloe Nestor was a superstar across the court, even scoring our very first goal of the season — and the crowd absolutely roared! The girls were so excited that the umpires had to remind them to get back into play.

Once again, there was clear improvement from every player since last Tuesday, showing great teamwork and determination. A special mention goes to Coda Ainsworth, who was stellar in defence, never giving up, making it tough for the opposition to score.

Even though we went down by just one goal, the atmosphere was electric and everyone walked away feeling like winners. Keep up the great work, girls — keep smiling, having fun, and enjoying your sport!

Go Winch Pink! ☐

### Under 11s Blue

Winch Blue turned up the heat this week, lighting up the court from the very first centre pass! The team brought the pressure on every play, flustering their opposition and snapping up intercepts left, right and centre.

Our Player of the Week, Olivia Payne, wowed the crowd with her aerial skills — reading the play beautifully, creating turnover after turnover, and showing footwork well beyond her years. She also stepped up to score when it mattered most!

Maddison Rowe was an absolute weapon in defence, finessing her skills throughout the game and showing incredible improvement. Her determination and focus were second to none.

It's amazing to see the growth and teamwork in this group — the camaraderie both on and off the court is something special. Keep backing each other, Blue Team, keep smiling, and most importantly... keep having fun out there! ☐

Go Winch Blue!

### League Bye

Under 13s and under 15s.



Scott McDonald  
0423 413 829



**S.J.R AUTOMOTIVE**  
ABN 812 483 868 39  
13 ALSOP DRIVE, WINCHELSEA VIC 3241

**M&B WOOD PLUMBING**

Call Matt - 0418 319 357  
[mbwoodplumbing.au](http://mbwoodplumbing.au)

Servicing Winchelsea & surrounds

- General maintenance & blocked drains
- Gas fitting & hot water service upgrades
- New homes & renovations

**NATURAL GAS CONNECTIONS**

**M. & L DRAYTON PLUMBING SERVICES**

**YOUR LOCAL LICENSED**

- PLUMBERS (24356)
- GAS FITTERS
- GAS CONVERTERS
- CARBON MONOXIDE TESTING

**MARK 0428 520 142**



Interested in Movies?

Join up for 2025 Spring Season.  
Movie starts 7.30 pm monthly at Globe Theatre.  
Membership \$40 for all 5 nights incl supper.

Contact: Jenny: 0409 672054 Sue: 0413 487915  
[Movies@growingwinchelsea.com](mailto:Movies@growingwinchelsea.com)  
[www.growingwinchelsea.com/projects](http://www.growingwinchelsea.com/projects)

**October 16th**  
Wicked Little Letters

**November 20th**  
Anatomy of a Fall

**December 11th**  
A Street Cat Named Bob

Chat with your Councillor


**Tony Phelps**

1st Thursday of the month  
10am-12pm  
Winchelsea Shire Hall  
co-working/study space



**MGT BUILDING & CONSTRUCTION**

NEW HOMES | EXTENSIONS | RENOVATIONS Ph: 0409 433 687

 REGISTERED Building Practitioner



*New Homes, Renovations, Extensions,  
Bathrooms, Decks & Pergolas*

0408 583 362  
[stephen@alfordbuilt.com.au](mailto:stephen@alfordbuilt.com.au)

 REGISTERED Building Practitioner

**PAPER LOGS & ROLLS**

No Chainsaw Needed  
Made By Recycled Paper  
Environmentally Friendly  
Ash Good For Garden

**1 Roll \$2**  
**Pack of 4 Logs \$5**

By using paper logs you save trees 

 **Contact Alan**  
**0476 475 422**  
All money raised used for local community






45 Anderson Street, Winchelsea 3241 Tel 5267 2660 winchelseagolf.com.au

# Winchelsea Golf Club



Ladies Captain, Robyn Vesey

## Results 29/10/25 - Mid Week/Weekly Stableford

### 17 Players.

1st - Geoff Morgan (23) 35 points  
 2nd - Greg Rigby (23) 33 points  
 BDL - Neil Hickman (12) 32 points C/B  
 BDL - Cam Parke (9) 32 points C/B  
 NTP (6th/15th) - Jackpot

## Saturday 1st November - Medal of Medallists- Stroke

### Putting Competition

## Results 29/10/25 - Ladies Competition Stroke and putting comp, Quarterly Medal

Winner: Sue Cuthbert 110-33-77  
 R/Up: Robyn Vesey 105-25-80  
 9 hole comp Winner Ann Davis 17 Pts  
 Puts: Robyn Vesey 26 puts

## CANCER COUNCIL'S THE LONGEST DAY

SUNDAY NOVEMBER 16TH FROM 5.30PM  
 WINCHELSEA GOLF COURSE

Join us at Winchelsea Golf Club as our members take on the incredible challenge of playing 72 holes of golf in one day, all to raise vital funds for the Cancer Council.

Players will be teeing off from 5:30am, aiming to complete 72 by 6pm. Come along to cheer them on throughout the day or be at the clubhouse to welcome them in as they finish their final hole. Your support from the sidelines will mean a lot to everyone taking part.

The club will be running a sausage sizzle and hosting a raffle, with all proceeds going towards our fundraising total for the Cancer Council. The club bar will also be open for players and supporters to purchase drinks.

So far, our players have raised over \$7,000 to support life-changing research through the Cancer Council. You can help us make an even bigger impact by scanning the QR code below to donate and show your support.



winchelsea\_golfclub

## Join a Winchelsea Community Kitchen

### Learn

Cooking skills, budgeting and recipe's

### Cook

With a small group on a regular basis

### Share

A delicious meal cooked together

Scan the QR code to sign up



OR Contact Tess:  
 healthpromotion@hesse.vic.gov.au  
 0417 848 292

## Green Lead Electrical

Connecting you to a greener future

0467 097 101



## Servicing Geelong & the Surf Coast

### Specialising in all residential electrical work including:

- Switch board & lighting upgrades
- Outdoor lighting
- Electrical safety checks
- Energy efficient LED lighting
- Ceiling sweep fans & ventilation
- Energy saving advice

Phone Martin Wilkinson:

**0467 097 101**

**greenlead@outlook.com**



Photos from last weeks 'Denis Waterfall Trophy' competition.








## Neurologically-Focused, Holistic Family Health Care

Get yours and your families health back naturally  
Empower yourselves for life-long health & wellness  
Perform and play at your absolute best



[www.onebodychiropractic.com.au](http://www.onebodychiropractic.com.au)  
 03 52672240 21 Hesse St Winchelsea

Here for your Vitality...

[eldersrealestate.com.au](http://eldersrealestate.com.au)




## You're in Safe Hands With Peter Lindeman

### *Delivering Exceptional Results for Over 20 Years*

If you're thinking of selling a Rural or Lifestyle acreage property on the Bellarine, the Greater Geelong region or beyond then think Peter Lindeman. Peter spent 20 years managing farms before jumping the fence to sell them; and over the last 23 years he's helped over 350 vendors achieve extraordinary results, more often than not surpassing their expectations. Why not let Peter show you how he can help you achieve an outstanding result for your property.

**Peter Lindeman - 0418 525 609**  
**RURAL AND LIFESTYLE SALES MANAGER - ELDERS GEELONG**

**E: [peter.lindeman@elders.com.au](mailto:peter.lindeman@elders.com.au)**

For all your livestock, rural real estate and property management needs, speak to the Charles Stewart team

Livestock	Real Estate
Peter McConachy 0408 522 878	Michael Stewart 0418 520 467
Jamie McConachy 0418 522 879	Peter McConachy 0408 522 878
Matthew Nelson 0428 315 400	Andrew Rice 0457 105 500
Gerard Bohan 0400 005 541	Josh Lamanna 0417 586 032
Dougal McIntyre 0439 575 612	Daryl Osborne 0419 388 341
	Anthony McDonald 0418 593 597

**Property Management - 5231 5011**  
 Sarah Higgs Nathan Gray Daniella De Rooy



15 Murrell Street, Winchelsea 5231 5400



# WINCHELSEA

# Osteopathic Clinic

Back pain • Neck pain • Sporting injuries • Headaches • Shoulder pain • Sciatica

Ph: 5267 2948  
34 Main Street, Winchelsea (within *The Exchange*)

Book online at:  
[www.winchelseaosteopathicclinic.com.au](http://www.winchelseaosteopathicclinic.com.au)





Winchelsea Tennis Club 21 Armytage St Winchelsea  
<https://www.facebook.com/groups/770786371589798>



# Winchelsea Tennis Club

## Fletcher Allen

Established back in 1985 this small club includes:

- 2 Synthetic Grass Courts
- 2 Concrete Hard Courts
- Clubroom Facility
- Newly developed Playground for the kids!

## Saturday Superstars - Round 3: Undermanned, Overwhelmed

Last Saturday our two senior teams battled through being undermanned — one rose to the challenge, the other felt the heat!

### Section 1 Mixed

At Winch, our legends faced Bannockburn a player short. Emily bravely stepped up to fill the gap, but despite strong rallies, the team went down 0 sets to 6 (17–36). Plenty of heart shown, but tough conditions and tough opponents proved too much this time.

Courts are always available to have a hit on so come down to Hesse Street Reserve! In terms of updates to the club and competitions, information will be on this page and our Facebook page.

### Section 7 Mixed

Meanwhile, our Section 7 crew dominated! With Mark filling in, he and Jo crushed their first match 6–1, and Adri and Kurt dished out a 6–0 bagel. The team finished with a stellar 5 sets to 1 (34–13) win and now sit proudly on top of the ladder!

### Saturday MVPs (Rounds 1–3)

Section 1 Mixed: Emily, Ange, Fletcher

Section 7 Mixed: Kurt, Byron, Kurt



Strength training and martial arts  
for the whole family in Winchelsea

**PERSONAL TRAINING**  
**STRENGTH CLASSES**  
**KIDS KUNG FU**  
**BOXING**

0401417387

[sunnygym.com.au](http://sunnygym.com.au)

[evan@sunnygym.com.au](mailto:evan@sunnygym.com.au)



Intro Deal:  
\$35 for  
2 weeks\*



**Located at 36 Main Street, Winchelsea 3241**

For any enquires or bookings please contact the clinic on 5292 8028.

Or visit our website: [www.winchmc.com.au](http://www.winchmc.com.au)

### Opening Hours:

Monday - Friday 8:00am - 5:00pm

(Monday Evening Clinics available and selected Saturdays)



Our clinic accepts online bookings via the app called HotDoc. Download the app on the App Store or Google Play or head to our website.





## Have your say: draft Service Review Policy

**Council is seeking the community's feedback on a new policy that will help prioritise and guide future reviews of its services.**

Council delivers more than 100 services, designed to meet a wide and evolving range of community needs and priorities.

The Draft Service Review Policy recognises that all services should be regularly reviewed to check that they are:

- being provided in an equitable manner;
- accessible to the people they're intended for;
- providing good value to the community; and
- can be delivered in a way that allows Council to remain financially sustainable.

The draft policy features nine principles that would be considered when carrying out service reviews in future.

Check out the principles and have your say about Council's decision making process for services delivered to the community:

**[yoursay.surfcoast.vic.gov.au/service-review-policy](https://yoursay.surfcoast.vic.gov.au/service-review-policy)**

## Have Your Say On

### Service Review Policy

Council is seeking the community's feedback on a new policy that will help prioritise and guide future reviews of its services.

Council delivers more than 100 services, designed to meet a wide and evolving range of community needs and priorities.

The Draft Service Review Policy recognises that all services should be regularly reviewed to check that they are:

- Being provided in an equitable manner;
- Accessible to the people they're intended for;
- Providing good value to the community; and
- Can be delivered in a way that allows Council to remain financially sustainable.

The draft policy also provides a method for prioritising which services will be reviewed.

Councillor Tony Phelps said periodically reviewing services was good practice and would help Council deliver services that best meet the needs of the community.

"The need for services can be affected over time by things like increasing or decreasing demand, advancements in technology, or other providers coming into the market," Cr Phelps said.

"Introducing this policy will give us a solid base to review our services regularly, and help us decide if we're offering the right services at the right levels, and whether our cost recovery method is the most appropriate.

"I encourage everyone in the community to read the draft policy and have their say by completing our short online survey."

The draft policy is open for feedback until Friday 28 November via [yoursay.surfcoast.vic.gov.au/service-review-policy](https://yoursay.surfcoast.vic.gov.au/service-review-policy).

All feedback will be considered before a final policy is presented to Council for endorsement later this year.



A family business operating for more than 138 years, HF Richardson services an extensive client base throughout the greater Winchelsea area. Our success is built on a long history of innovation and while we've moved with the times, our basic values of honesty, trust and integrity have remained.



**Eric Foster**  
**0429 499 924**  
Sales Executive



**Ken McDonald**  
**0418 524 150**  
Licensed Estate Agent

**Residential | Rural Lifestyle  
Agricultural Farms**

**HF RICHARDSON**

**PROPERTY**

**[www.hfrichardson.com.au](https://www.hfrichardson.com.au)**





# parkrun 87



**Saturday 1 November 2025**

**Trebeck Reserve, Winchelsea**

[www.parkrun.com.au](http://www.parkrun.com.au)

Thirty parkrunners walked or ran the course through Trebeck Reserve this week in great running conditions. There were seven Volunteers. We had visitors from Geelong, Lalor, Torquay and Wangaratta. Two people recorded a Personal Best time. Congratulations to Archie Ryan and Chloe Hrobarik. Welcome to Christian and Nigel who both completed their first parkruns.

This event was made possible by the following volunteers: Neil McInnes, Murray Bennett, Dianna Vesey, Liz Bennett, Don Smith and Ann Morsby

Full details of this week's results can be found at [trebeckreserveparkrun.com.au/results](http://trebeckreserveparkrun.com.au/results) or check out our Facebook page for more photos.

If you wish to join us any Saturday morning as a walker, runner or volunteer please complete the simple online registration at [parkrun.com.au/register](http://parkrun.com.au/register), this is free, only needs to be done once and can be used at any of the 5,000 plus parkrun events worldwide.

To volunteer please send an email to [trebeckreserve@parkrun.com](mailto:trebeckreserve@parkrun.com)





# Winchelsea Star

ISSN 2202-6851



9 772202 685002



## Life's busy. Let us help you.

### Contact us today

We can help you with:

- Buying your first or next family home
- Saving for your first home
- Residential Investment Lending
- Refinancing from your current lender
- Home loan reviews
- Pre-approvals

With extensive banking experience and financial expertise, we'll help bring your financial goals to life.



**Ebony Berg**  
0400 784 249



**Josie Kavenagh**  
0409 564 192



**Community Bank**  
Winchelsea and District



**Water Supply Specialists**

**WATER SOLUTIONS**

74 Dennis Street, Colac  
5231 1861



**ALL THINGS WATER:**

- PUMPS • PIPES
- FITTINGS • TANKS
- POOL CHEMICALS
- IRRIGATION
- WATER PURIFICATION
- SOLAR • REPAIR

## DEFIBRILLATORS IN WINCHELSEA



### Accessible to the public 24 hours a day

The Winchelsea Lions Club has compiled a list of public access defibrillators in Winchelsea. If anyone knows any others with 24 hour public access, please let Linda Carter know 0439 817 263.

**Ambulance Victoria**  
33 Willis Street

**Bendigo Bank**  
11 Main Street

**Globe Theatre (Side entrance)**  
17 Willis Street

**Hesse Rural Health**  
8 Gosney Street

**Men's Shed**  
51 Hesse Street

**Netball Courts**  
Eastern Reserve Hopkins St

**Senior Citizens Club**  
36 Harding Street

**Uniting Church**  
33 Hesse Street

**Winchelsea Bowls Club**  
Hesse St,

**Winchelsea Golf Club**  
13 Anderson Street

**Winchelsea Primary School**  
Main Street

**Wurdale Memorial Hall**  
220 Wurdale Road