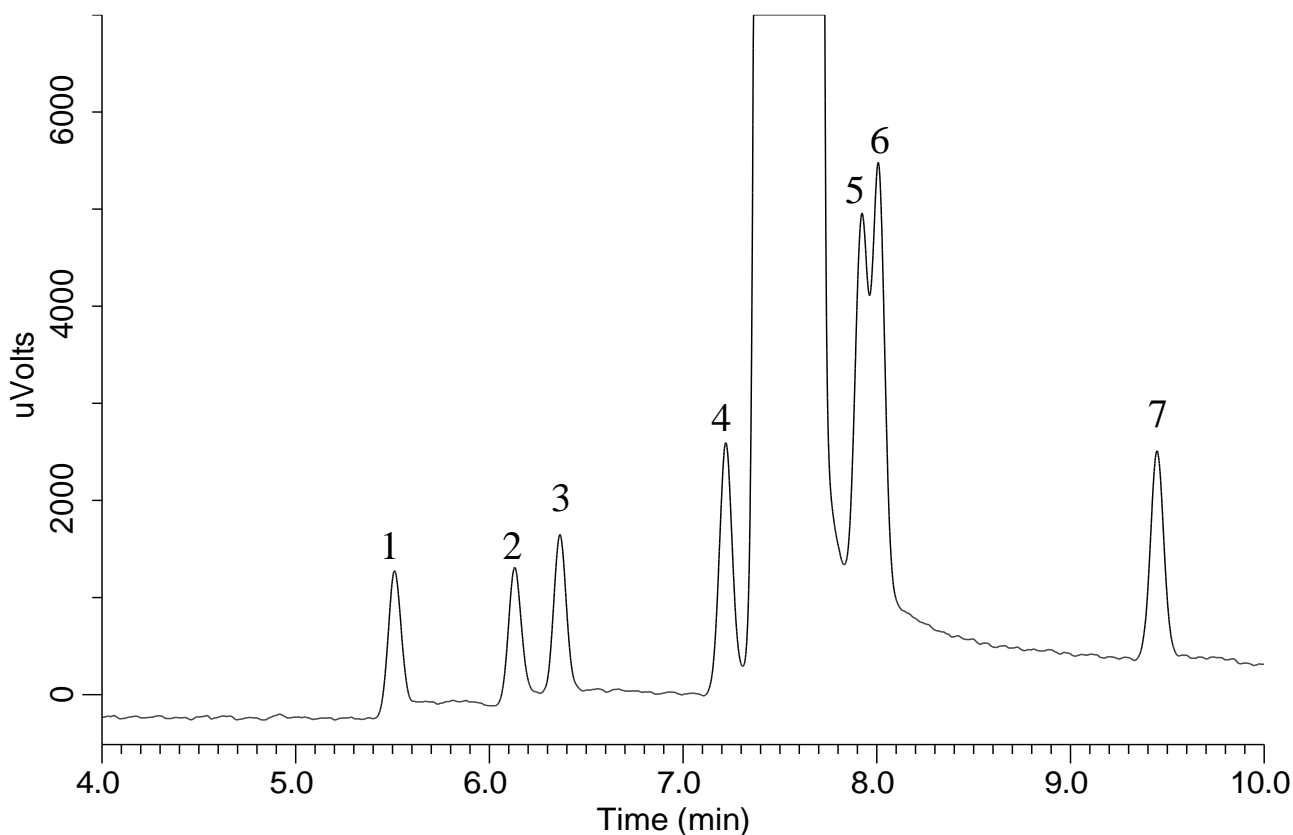


# InertSearch™ for GC

InertCap® Applications

## Flavor by Japanese Standards of Food Additives

Data No. GA299-0984



### Conditions

**System** : GC-FID  
**Column** : InertCap Pure-WAX  
0.25 mm I.D. × 30 m df = 0.25 μm  
**Col.Cat. No.** : 1010-68142  
**Col. Temp.** : 50 °C(5 min hold) - 5 °C/min  
- 230 °C(19 min hold)  
**Carrier Gas** : He 40 kPa  
**Injection** : Split flow 50 mL/min  
250 °C  
**Detection** : FID Auto Range  
250 °C  
**Sample Size** : 1000 μg/mL in Methanol  
1.0 μL

### Analyte

1. Acetaldehyde  
2. Propionaldehyde  
3. Isobutyraldehyde  
4. *n*-Butyraldehyde  
5. 2-Methylbutyraldehyde  
6. Isovaleraldehyde  
7. *n*-Valeraldehyde