

# ANTARCTICA DISCOVERY

A MODERN POLAR EXPERIENCE



Orbridge



# The 7th Continent | Itinerary and Highlights

Due to weather and ice patterns, the itinerary below may change in order to maximize wildlife and natural encounters.

- Day 1:** **EN ROUTE FROM U.S.** (Travel time from/to U.S. may take up to two days depending on flight schedules.)
- Day 2:** **ARRIVE IN USHUAIA, ARGENTINA** Unwind at an exceptional property within the Cerro Alarkén Natural Reserve. This evening become acquainted with fellow travelers during a welcome reception.  
Overnight: Arakur Ushuaia Resort & Spa (R)
- Day 3:** **USHUAIA – EMBARKATION** Before boarding the ship in the late afternoon relax at the hotel or join an optional guided walk through Tierra del Fuego National Park.  
Overnight: Ocean Victory (B,D)
- Days 4-5:** **DRAKE PASSAGE** During this two-day crossing take advantage of the ship's five-star amenities, including the observation lounge, library and outdoor bar and viewing platform.  
Overnight: Ocean Victory (B,L,D daily)
- Days 6-9:** **SOUTH SHETLAND ISLANDS | ANTARCTIC PENINSULA** While the captain maximizes opportunities to anchor, the flexible daily itinerary includes a multitude of activities. Ocean Victory is well-equipped with Zodiac boats and a fleet of kayaks allowing you to discover remote coastlines and wildlife-rich areas up close. Expert guides, scientists and lecturers seamlessly enrich the learning experience throughout the tour.  
Overnight: Ocean Victory (B,L,D daily)
- Day 10-11:** **DRAKE PASSAGE** As we retrace the route through the Drake Passage, gather on deck for a last look at the endless panorama of ice and sea—a serene setting for retrospection and camaraderie.  
Overnight: Ocean Victory (B,L,D daily)
- Day 12:** **USHUAIA – DISEMBARKATION | DEPART FOR U.S.** After breakfast transfer to the airport for flights home. (B)

(B = Breakfast, L = Lunch, D = Dinner, R = Reception)

**Activity Level:** This program offers a variety of activities, including shore excursions and small boat cruises. Guests should be sure-footed on stairs and ramps, be able to walk or hike at least one mile on uneven and slippery terrain.



## What's Included

- 1 night luxury hotel accommodations (including breakfast) in Ushuaia prior to embarkation
- 9 nights aboard Ocean Victory including all onboard meals (with select wines and beers at lunch and dinner)
- 24-hour self-service coffee and tea facilities onboard
- All scheduled landings and excursions listed in the itinerary (all subject to weather and ice conditions)
- An insulated waterproof/windproof expedition parka, which is yours to keep
- A pair of insulated rubber boots for shore landings for duration of the cruise (to be returned prior to disembarkation)
- Access to a photographic trip log (shared with guests after the voyage via an online link)
- All shipboard gratuities
- All luggage portorage
- All port fees
- Transfers from the hotel to the ship on embarkation day
- Airport transfers for guests arriving and departing during the suggested times

**Important Note:** Due to the remote location of this tour, medical insurance and medical evacuation insurance is required with a minimum coverage of \$200,000. Orbridge's Guest Services team can assist with questions regarding evacuation insurance.

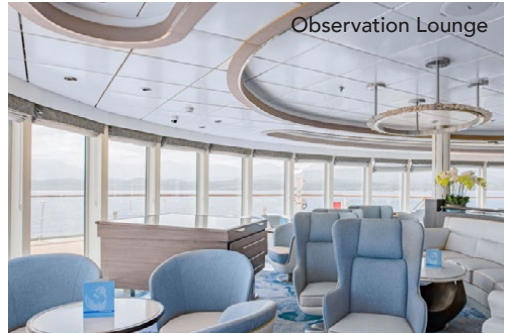


# Onboard Ocean Victory

Accommodating 190 guests, *Ocean Victory* boasts a delicate balance between modern refinement and responsible travel. From the vessel's energy-efficient systems to its minimized carbon footprint, every detail has been meticulously crafted to ensure a minimal impact on the environments we explore. This vessel holds the highest Polar Code 6 and Ice Class 1A designations, making it ideal for expedition cruising. Sturdy construction and a patented X-Bow design create excellent maneuverability and pleasant travel by reducing seasickness, noise and vibration. All cabins are well-appointed and feature exceptional space, amenities and ocean views.



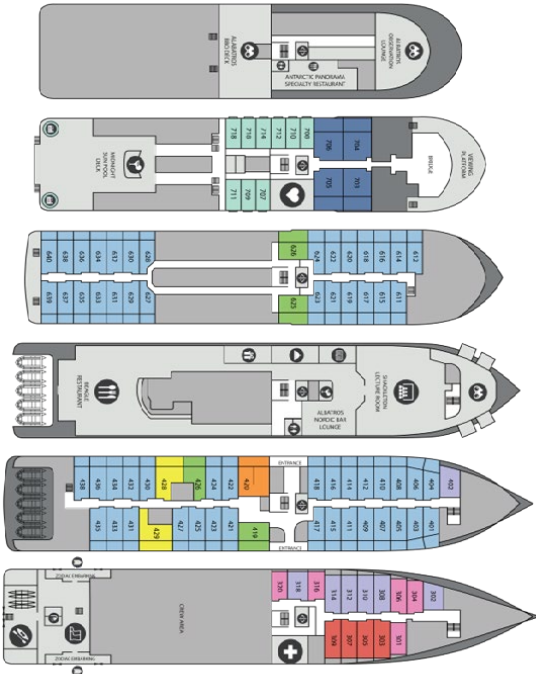
BBQ Deck



Observation Lounge



Dining





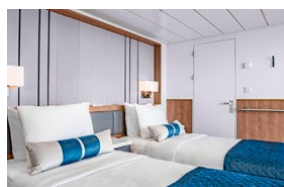
**Albatros State Porthole (D)**  
Porthole window (Decks 3 and 4; approx. 236 sq.ft.)



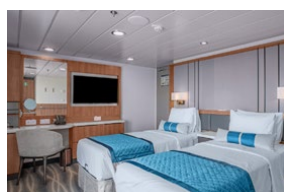
**French Balcony Suite (E)**  
Floor-to-ceiling windows (Deck 7; approx. 172 sq.ft.)



**Balcony State (C)**  
Private balcony with floor-to-ceiling windows (Decks 4 and 6; approx. 258 sq.ft.)



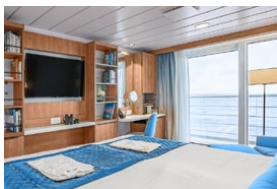
**Balcony Suite (B1)**  
Sitting area and private balcony with floor-to-ceiling windows (Deck 4; approx. 376 sq.ft.)



**Junior Balcony Suite (B2)**  
Sitting area and private balcony with floor-to-ceiling windows (Decks 4 and 6; approx. 301 sq.ft.)



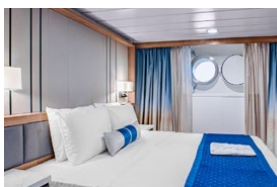
**Junior Suite (A)**  
Additional sofa bed, sitting area, and private balcony with floor-to-ceiling windows (Deck 7; approx. 452 sq.ft.)



**Premium Suite (PS)**  
Two-room suite, additional sofa bed, table and chairs, and private balcony with floor-to-ceiling windows (Deck 4; approx. 484 sq.ft.)



**Single (G)**  
Porthole window (Deck 3; approx. 193 sq.ft.)



**Triple (F)**  
Porthole window with additional sofa bed (Deck 3; approx. 236 sq.ft.)



## Optional Buenos Aires Pre-Tour

Experience the vibrance and beauty of Buenos Aires, Argentina's sophisticated capital city.

**Day +1:** **EN ROUTE FROM U.S.** *(Travel time from U.S. may take up to two days depending on flight schedules.)*

**Day +2:** **ARRIVE IN BUENOS AIRES, ARGENTINA**  
Settle in at the hotel with time to freshen up before gathering with fellow travelers for a gastronomic experience and live tango performance at one of Buenos Aires' most iconic theaters.  
Overnight: Alvear Palace Hotel (D)

**Day +3:** **BUENOS AIRES** After breakfast set out on a panoramic tour to discover some of the city's most iconic neighborhoods and landmarks. See the Palermo district, Recoleta Cemetery and Plaza de Mayo. The afternoon and evening are at leisure to enjoy the city's many fantastic restaurants or the Buenos Aires nightlife.  
Overnight: Alvear Palace Hotel (B, Snack)

**Day +4:** **BUENOS AIRES | FLIGHT TO USHUAIA | MAIN PROGRAM BEGINS** After breakfast fly to Ushuaia to join the group for the main program. (B)

### What's Included

- 2 nights at Alvear Palace Hotel (or similar) with breakfast each morning
- Special 3-course dinner and tango performance
- Panoramic city tour of Buenos Aires
- All gratuities and portorage
- All airport and hotel transfers for guests arriving and departing during the suggested times



## Optional Iguazú Falls Post-Tour

Experience the thundering roar from one of the most spectacular waterfalls in the world.

**Day 12:** **FLIGHT TO BUENOS AIRES** Arriving at Aeroparque Jorge Newbery take the group transfer to the hotel for a relaxing evening.  
Overnight: Alvear Icon Hotel

**Day 13:** **FLIGHT TO IGUAZÚ FALLS | GUIDED TOUR**  
After breakfast fly to Iguazú Falls for an afternoon of guided exploration around the falls. Your luxury hotel is the only property located within the park.  
Overnight: Gran Meliá Iguazú (B,L,D)

**Day 14:** **IGUAZÚ FALLS TOUR** This morning enjoy a second guided visit to the falls. This afternoon enjoy free time on your own, or choose to join the optional Gran Aventura Safari Boat excursion (\$95 per person; can be booked on-site).  
Overnight: Gran Meliá Iguazú (B)

**Day 15:** **IGUAZÚ FALLS | FLIGHT TO BUENOS AIRES | DEPART FOR U.S.** After breakfast fly to Buenos Aires to connect with flights home. (B)

### What's Included

- 1 night at Alvear Icon Hotel in Buenos Aires (or similar) and 2 nights at Gran Meliá Iguazú (or similar) with breakfast each morning
- 1 box lunch and 1 dinner
- 2 guided tours of Iguazú Falls
- All gratuities and portorage
- All airport and hotel transfers
- Internal round-trip airfare between Buenos Aires and Iguazú Falls

