



# **B** TRANSFORM CONVEYOR SAFETY



**PERTH**  
(08) 9459 8600  
**KALGOORLIE**  
(08) 9021 8300

**ADELAIDE**  
(08) 8231 1513  
**NEWMAN**  
(08) 9175 1164

**DARWIN**  
(08) 8963 5621  
**MT ISA**  
(07) 4743 6458

✉ [sales@bendtechgroup.com.au](mailto:sales@bendtechgroup.com.au)  
🌐 [bendtechgroup.com.au](http://bendtechgroup.com.au)

2-10 Kewdale Road, Welshpool WA 6106





## **BEND-TECH GROUP**

**Bend-tech Group** delivers a tailored design, engineering and fabrication service which empowers our customers towards operational safety, efficiency, and excellence. Intelligent systems and processes propel our consultative approach towards problem solving, it is imperative we create comfort and certainty. Service that takes control of problems and accountability puts solutions in motion, we have learned through a deep understanding of our customers that this is what they need.

Being global providers of designed and engineered products, services and solutions has allowed us to develop cross-industrial expertise that has galvanised our internal processes and put us at the forefront of technology and innovation. Our people are what we believe sets us apart, our culture of learning, understanding and excellence means the whole organisation progresses in synchronicity. Our team makes an impact internally, as well as throughout all our customer interactions.

Over 30 years of delivering intelligent design, custom-certified products and services has taken us across many industries and into many countries. We have provided our industry leading solutions across the Mining, Defence, Fabrication, Marine, Rail and Oil and Gas industries globally.

**3** | **BUILT BETTER  
BY BEND-TECH**





**TRANSFORM CONVEYOR SAFETY**

**INDEX**

**CONVEYOR PRODUCTS** /// **3 - 8**

**CONVEYOR PLATFORMS** /// **10 - 11**

## CONVEYOR PRODUCTS

Our puller plate kits are certified, the pin is threaded so can't fall out at any stage, eliminating the risk. The components all come as a kit which eliminates having multiple components to keep track of (bolts, pins, plates).

### CONSTRUCTION

- Heavy-duty, lightweight aluminium
- WLL: 150kg
- Length: 850mm
- Width: 750mm
- Safety handrails
- Fitted with forklift slots
- Non-slip stairway and work area



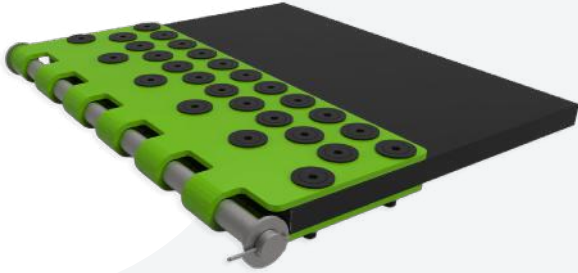
### CONVEYOR BELT PULLER CLAMP KIT – 6 TONNE

Part No. 5000227

## CONVEYOR PRODUCTS

### CONVEYOR BELT PULLER CLAMP KIT – 9 TONNE

Part No. 5300037

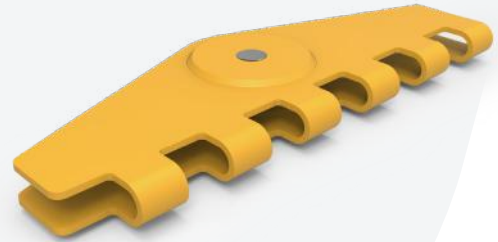


#### CONSTRUCTION

- WLL: 9 Tonne
- 1x Plate
- Pin assembly
- Countersunk bolts, washers and nuts
- Custom sizes available on request

### CONVEYOR CLAMP ASSEMBLY BULL NOSE PULLER PLATE – 9 TONNE

Part No. 5300035



#### CONSTRUCTION

- WLL: 9 Tonne
- 1x Bull-nose plate
- Pin Assembly
- Custom sizes available on request

### CONVEYOR SUPPORT FRAME

Part No. TBA



#### CONSTRUCTION

- Fabricated from lightweight aluminium
- Made for easy transportation and handling
- Supports the weight of conveyor belts

### IDLER STORAGE AND TRANSPORT PALLET – HIGH

Part No. 5506552



#### CONSTRUCTION

- WLL 1T
- Forklift friendly
- Fitted with lifting lugs for easy mobility
- Able to accommodate up to 20 different idlers of various diameters and lengths

# CONVEYOR PRODUCTS

## CONVEYOR BELT LIFTER SPREADER BAR

Part No. 5501321

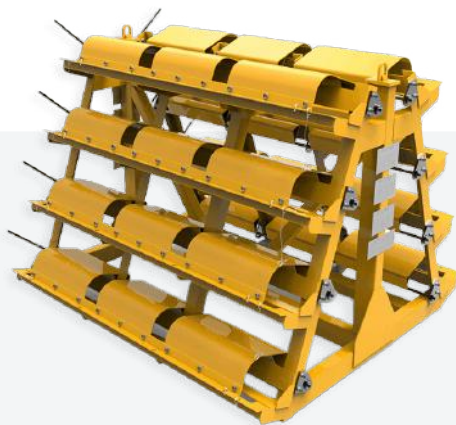


### CONSTRUCTION

- Designed for lifting conveyor belts
- Rollers included for ease of lifting
- Various sizes and SWL available

## CONVEYOR IDLER STORAGE AND LIFTING RACK

Part No. 5000223

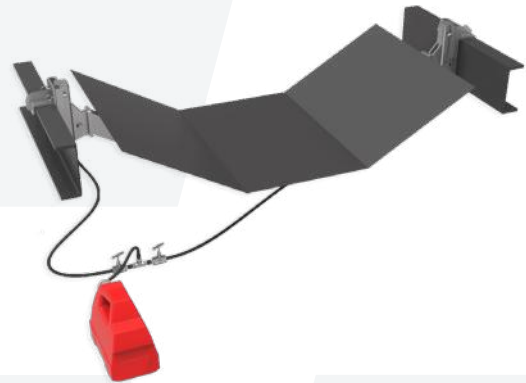


### CONSTRUCTION

- Fold over locking shroud
- Lifting points and forklift slots for transportation
- We are able to accommodate up to 24 idlers of different sizes and weights.

## HYDRAULIC CONVEYOR BELT LIFTER

Part No. 5502465

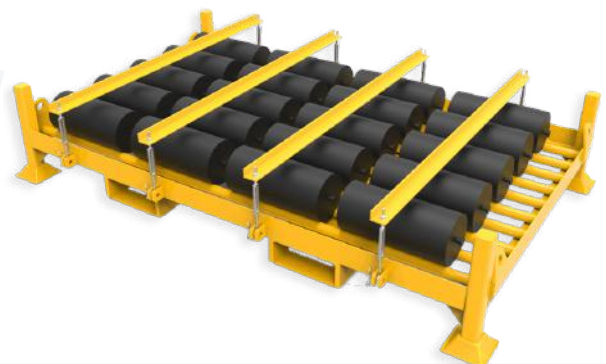


### CONSTRUCTION

- Heavy-duty steel and aluminium
- Electronic hydraulic pump included
- Lightweight and easy to handle
- Various designs available for different belt widths and angles

## CONVEYOR IDLER STORAGE AND TRANSPORT PALLET

Part No. 5000217



### CONSTRUCTION

- Forklift friendly
- Fitted with lifting lugs for easy mobility
- Able to accommodate up to 20 different idlers of various diameters and lengths

# CONVEYOR PRODUCTS

## ALUMINIUM BELT LIFTING SPREADER BAR 1500MM

Part No. 5000235



### CONSTRUCTION

- Heavy-duty T6 aluminium
- Height: 128mm
- Engineered tough
- Lightweight
- Certified and compliant with Australian Standards – SWL 1 TONNE

## ALUMINIUM BELT LIFTING SPREADER BAR 1800MM

Part No. 5000234

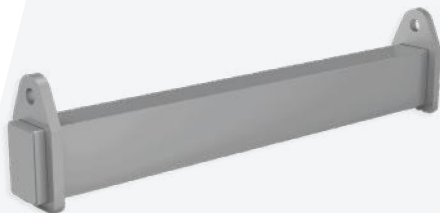


### CONSTRUCTION

- Heavy-duty T6 aluminium
- Height: 155mm
- Engineered tough
- Lightweight
- Certified and compliant with Australian Standards – SWL 1 TONNE

## ALUMINIUM BELT LIFTER SPREADER BAR 1850MM

Part No. 5502263

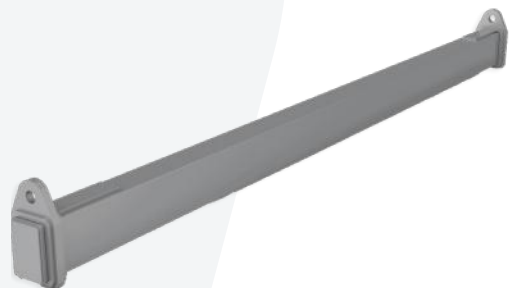


### CONSTRUCTION

- Heavy-duty T6 aluminium
- WLL: 2 Tonne
- Height: 285mm
- Length: 1955mm
- Width: 155mm
- Engineered tough

## 3000MM ALUMINIUM SPREADER BAR

Part No. 5502431



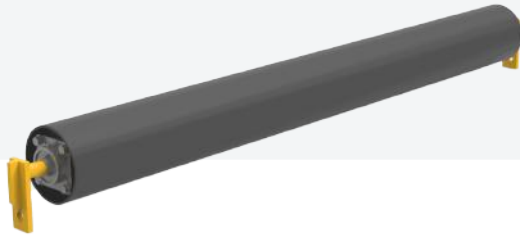
### CONSTRUCTION

- Heavy-duty T6 aluminium
- WLL: 2 Tonne
- Height: 285mm
- Length: 3110mm
- Width: 155mm
- Engineered lightweight and tough
- Raw finish

# CONVEYOR PRODUCTS

## CONVEYOR BELT UNROLLING TOOL

Part No. 5502143

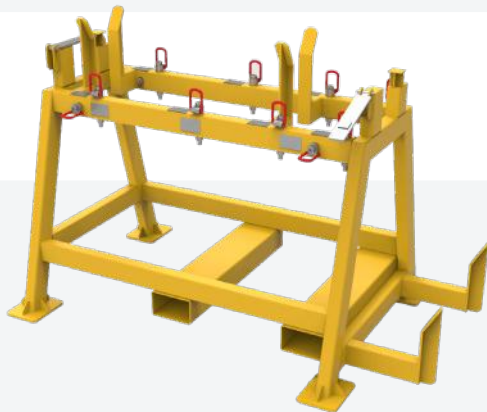


### CONSTRUCTION

- Heavy-duty steel
- WLL: 2T
- Height: 200mm
- Length: 1605mm
- Width: 165mm
- Fitted with greasing points and pulling lugs

## CONVEYOR BELT REELING COGSHAFT TRANSPORT FRAME

Part No. 5502145



### CONSTRUCTION

- Heavy-duty steel
- Height: 1285mm
- Length: 2520mm
- Width: 1525mm
- Stainless steel stamp plates attached to frame

## SLIMLINE CONVEYOR BELT LIFTING JIG

Part No. 5504070

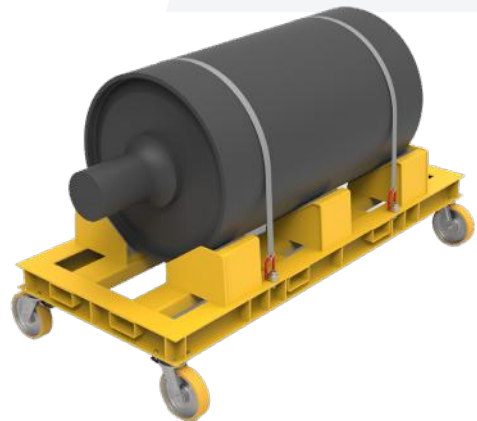


### CONSTRUCTION

- Heavy-duty steel
- WLL: 2T
- Length: 3430mm
- Width: 170mm
- Rollers for ease of lifting
- Easily clears 200mm gap

## CONVEYOR PULLEY TRANSPORT AND SUPPORT FRAME

Part No. 5504018



### CONSTRUCTION

- Heavy-duty steel
- WLL: 8T
- Height: 820mm
- Length: 2950mm
- Width: 1300mm
- heavy-duty ratchet strap tie-downs included

## CONVEYOR PRODUCTS

### CONVEYOR CYCLONE TIE DOWN BRACKET

Part No. 5506444

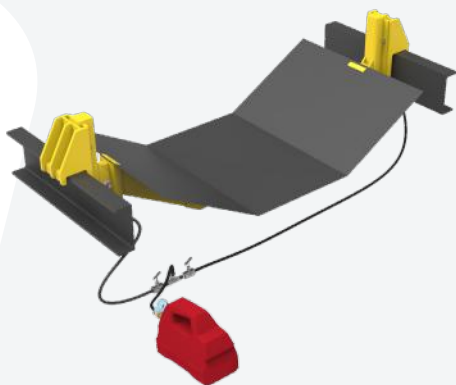


#### CONSTRUCTION

- Heavy-duty steel
- Easily engaged for when cyclones or strong winds happen.
- Available to be customised to various conveyors

### OVERLAND CONVEYER HYDRAULIC BELT LIFTER 7.5T

Part No. 5505111



#### CONSTRUCTION

- Heavy-duty steel
- WLL: 7.5T
- Height: 752mm
- Length: 2394mm
- Width: 192mm
- Hydraulic System

### CONVEYOR ACCESS LADDER

Part No. 5501031



#### CONSTRUCTION

- Non-slip stairway
- 7 step stairway
- Safety handrails
- Fixed Plant placement
- Certified and compliant with Australian Standards

### CONVEYOR ROLLER STORAGE RACK

Part No. 5506028



#### CONSTRUCTION

- Features space for 6 rollers as per drawing
- Forklift Slots
- Lifting Lugs
- Height: 1460mm
- Length: 2350mm
- Width: 600mm



**B** **BIGGER  
THAN  
BUSINESS**

# CONVEYOR PLATFORMS

 [www.bendtechgroup.com.au](http://www.bendtechgroup.com.au)



# CONVEYOR PLATFORMS



## RECLAIMER BEARING ACCESS PLATFORM

Part No. 5414116

Our Aluminium Reclaimer Bearing Access Platform provides the ability to access and inspect reclaimer bearings easily and quickly during shutdown.

### CONSTRUCTION

- Heavy-duty aluminium
- Non-slip grating and work area
- Large industrial castors and levelling jacks
- Removable handrails for ease of access to work area when required
- Certified and compliant with Australian Standards



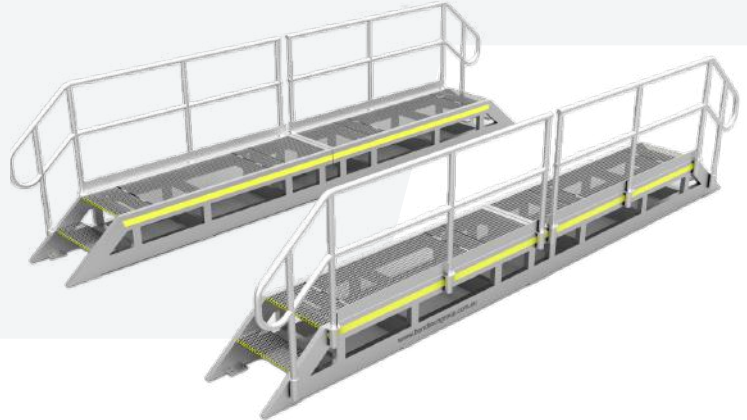
# CONVEYOR PLATFORMS

## BELT SPLICING WALKWAY

Part No. 5414115

### CONSTRUCTION

- Heavy-duty aluminium
- Removable handrails
- Non-slip stairways and grating
- Modular design and build to ensure ease of use and installation
- Certified and compliant with Australian Standards



## LOWER CONVEYOR ACCESS PLATFORM

Part No. 5413064

### CONSTRUCTION

- Heavy-duty aluminium
- Height: 1160mm
- Length: 4300mm
- Width: 1500mm
- Safety liner
- Weather resistant



## BELT SPLICING ACCESS PLATFORM

Part No. 5001991

### CONSTRUCTION

- Heavy-duty aluminium
- Height: 3050mm
- Length: 5215mm
- Width: 1200mm
- Ladder Access
- Self-closing gate
- Safety handrails
- Gridmesh deck for non-slip work area



**B** *BIGGER THAN BUSINESS*

# TAKE NOTE

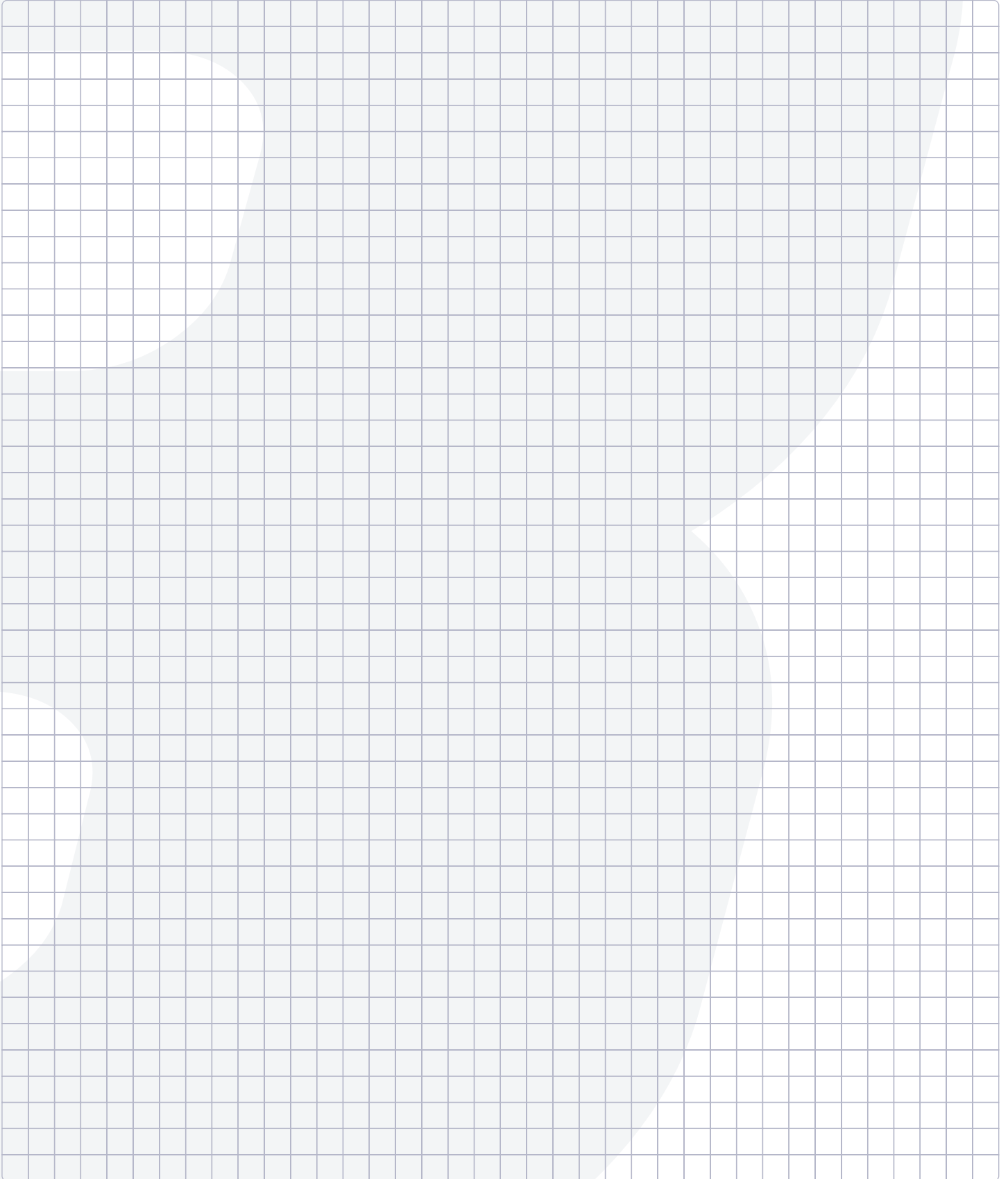


# TAKE NOTE



**B** *BIGGER THAN BUSINESS*

# TAKE NOTE



# TAKE NOTE



## EXPERIENCE OUR CONSULTING, DESIGN AND ENGINEERING SERVICE

Projects and the associated challenges often require custom solutions which our CDEC system facilitates. Consultation, Design, Engineering and Construction is our holistic approach to solution development, making maintenance on-site safe, efficient, and easy.



### CONSULTATION

We come to you and visit your site to get a hands-on feel for your project. The aim of our consultation is to listen to and understand your requirements. If the project requires it, our 3D scanning capabilities will streamline measurement and data capture. This approach allows us to discuss your problem on-site, possible solutions, and the benefits we can offer.



### DESIGN

After the consultation we go back to our design team to begin the development of your custom solution. Our team produce designs in CAD Design complete with all drafting documentation ensuring an advanced manufacturing process.



### ENGINEERING

Once the design is approved, we begin the engineering process. This ensures that the right material grade is used for your project to guarantee structural and functional integrity. We provide full certification that includes WLL, load ratings, integrity reports as well as certification plates and identifications. We design and engineer all our solutions to ensure full compliance with Australian standards.

Our engineering department includes 9 draftsman and 14 engineers. We are experienced in the design and development of complex mechanical engineering analysis and solutions.



### CONSTRUCTION AND FABRICATION

Our industry leading 10000 sq/m facility in Welshpool, Western Australia is armed with highly qualified consulting, drafting, engineering and fabrication personnel dedicated to manufacturing precision, engineered high performance industrial solutions.



**DARWIN**  
08 8963 5621

**MOUNT ISA**  
07 4743 6458

**NEWMAN**  
08 9175 1164

**PERTH**  
08 9459 8600

**KALGOORLIE**  
08 9021 8300

**ADELAIDE**  
08 8231 1513

 [sales@bendtechgroup.com.au](mailto:sales@bendtechgroup.com.au)

 [www.bendtechgroup.com.au](http://www.bendtechgroup.com.au)

