

# CULTURAL INTRODUCTION

Yunlin County



Submitted:

Ms. Jay Dianne P. Javier, LPT

School:

Niao Song High School of the Arts  
Shuilin Township, Yunlin County



In photo: Janfusun Fancy World

# Table of Contents

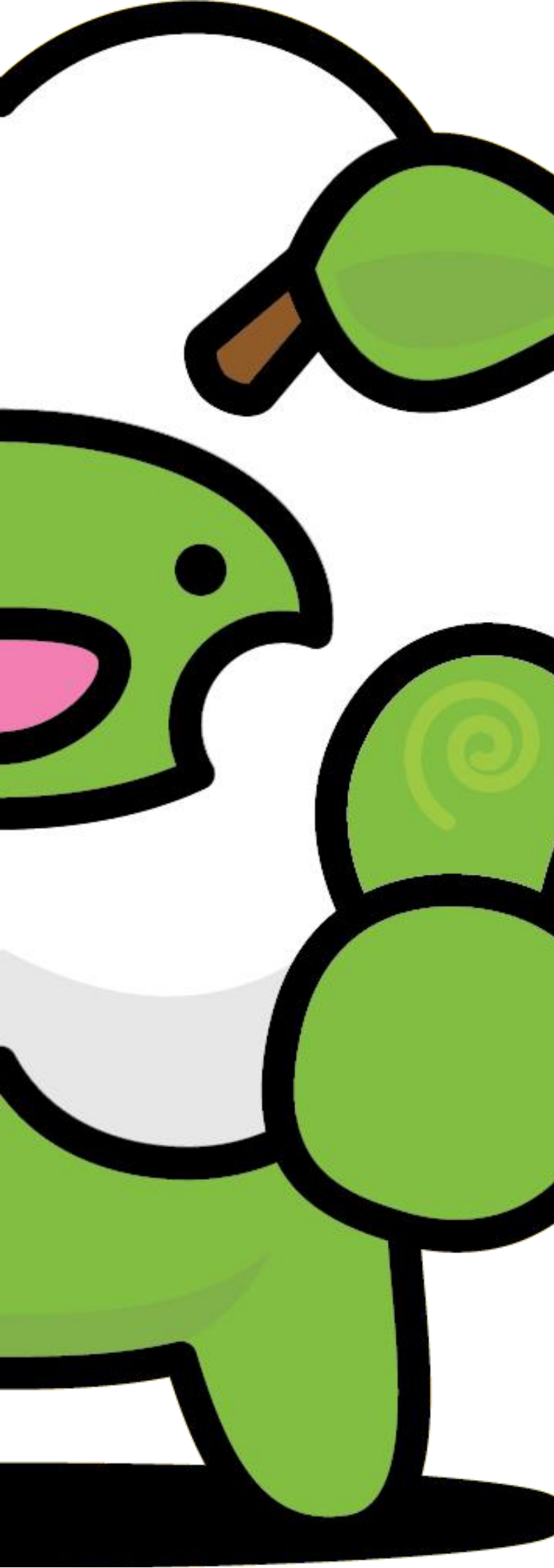


- 03 Meet Yunlin's Tourism Mascot:  
KIMONCHAN
- 05 Central Taiwan: Yunlin County  
GEOGRAPHY
- 09 Let's read the dialogue!
- 13 Reading comprehension
- 14 Check your grammar
- 15 Crossword puzzle

Meet Yunlin's tourism mascot:

**KIMONCHAN**  
(キモンちゃん 奇萌將)





Selected as Yunlin's tourism mascot in 2014 from a pool of 1,638 candidates worldwide, "KIMONCHAN" symbolizes the vibrancy of Yunlin's agricultural produce with its depiction of a "Green sprout and seed." The representation of a cloud is inspired by the county's name, Yunlin, signifying the "cloud forest." KIMONCHAN proudly serves as Yunlin's premier ambassador for both its delectable cuisine and thriving tourism industry.



# Central Taiwan: Yunlin County

# Yunlin Geography

In photo: Beigang Chaotian Temple



- Yunlin is situated in the central-western part of Taiwan.
- It is characterized by a mix of plains and hills.
- The Beigang River flows through the county, contributing to its agricultural fertility.



In photo: Xilou bridge

Welcome to Yunlin County, a place where vibrant traditions, diverse cultures, and the beauty of nature come together! Nestled in the heart of Taiwan, Yunlin County is a tapestry of rich history and warm hospitality that will captivate your senses.

**History and Heritage.**

Yunlin has a history that spans centuries, with roots deeply embedded in the tapestry of Taiwan's past. The county has witnessed the rise and fall of empires, and its heritage reflects the influence of various cultures. The blend of Hakka and Hoklo (Hokkien) traditions has shaped the local customs, language, and way of life.

**Agricultural Heartland.**

Imagine endless fields of emerald-green rice paddies waving in the gentle breeze – that's the picturesque landscape of Yunlin. Known as an agricultural heartland, the county is celebrated for its bountiful harvests of rice, fruits, and vegetables. Farming isn't just an occupation here; it's a way of life that has been passed down through generations.



In photo: Yiwu Detention Pond

**\*\*Festivals and Celebrations:\*\***

Yunlin comes alive with vibrant festivals that showcase the joyous spirit of its people. From the lively lantern festivals to the colorful parades, each celebration is a testament to the county's cultural vitality. Beigang Chao-Tian Temple, a revered religious site, hosts grand festivities, attracting visitors from near and far.



In photo: Beigang Chaotian Temple



In photo: Taiping old street

**\*\*Local Cuisine:\*\***

Prepare your taste buds for a culinary adventure! Yunlin's cuisine is a delightful fusion of flavors, featuring delectable dishes rooted in local ingredients. From savory Hakka delicacies to mouthwatering street food, every bite tells a story of the county's gastronomic heritage..



In photo: Yiwu Detention Pond



**Let's read the dialogue!**



Hey, have you ever been to Yunlin County?



No, not yet. What's there?



Oh, it's amazing! There are vast rice fields that stretch for miles. There is also a famous lantern festival in Beigang Township during the lunar new year.



Lantern festival? That sounds cool! What else is there?



Well, there are traditional markets with delicious local food. There are also ancient temples, like Beigang Chao-Tian Temple, where they hold grand celebrations.



Yes, they have the Yunlin Orchid Show in spring, showcasing beautiful orchids. And in Xiluo Township, there's a bridge festival with colorful lanterns.

Sounds fascinating! Are there any special events?

Wow, Yunlin County sounds like a place full of culture and fun!



The end.

# Reading

## Comprehension

Read and answer the questions about the dialogue. Choose and encircle the letter of the best answer among the options.

1. What is the main attraction mentioned in Yunlin County?
  - A. Traditional markets
  - B. Ancient temples
  - C. Vast rice fields
  - D. Xiluo Bridge
2. When does the famous lantern festival in Beigang Township take place?
  - A. Summer
  - B. Lunar New Year
  - C. Spring
  - D. Winter
3. What is the special event mentioned in spring in Yunlin County?
  - A. Bridge festival
  - B. Lantern festival
  - C. Yunlin Orchid Show
  - D. Traditional market
4. According to John, what sounds fascinating about Yunlin County?
  - A. The ancient temples
  - B. The delicious local food
  - C. The vast rice fields
  - D. The cultural richness and fun events

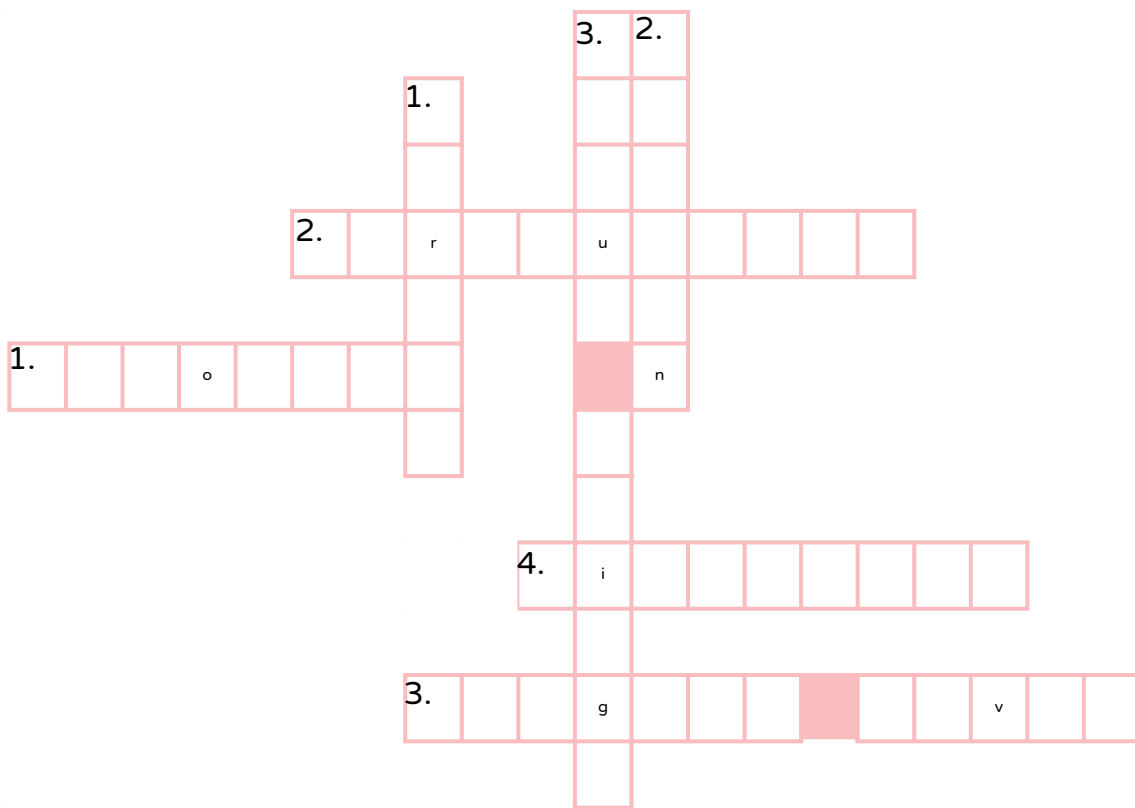
# Check your grammar

Fill in the blank with the correct declarative statements. Choose and circle your answer.

1. \_\_\_\_\_ a famous lantern festival in Beigang Township during the lunar new year.
  - A. There is
  - B. There are
  - C. There am
  - D. There be
  
2. \_\_\_\_\_ traditional markets with delicious local food.
  - A. There are
  - B. There is
  - C. There am
  - D. There be
  
3. \_\_\_\_\_ a bridge festival with colorful lanterns in Xiluo Township.
  - A. There are
  - B. There is
  - C. There am
  - D. There be

# Crossword Puzzle

- Each clue corresponds to a word or term related to Yunlin's history, geography, festivals, or local products.
- Fill in the crossword grid with the correct words to complete the puzzle.
- Have fun exploring the vibrant culture of Yunlin!



## ACROSS:

1. The famous religious site in Yunlin known for its grand festivities.
2. The main focus of Yunlin's economy, including rice, fruits, and vegetables.
3. The river that flows through Yunlin, contributing to its agricultural fertility.
4. Yunlin's tourism mascot, representing the vitality of agricultural crops.

## DOWN:

1. The season during which the Yunlin Orchid Show is usually held.
2. The destination in Central Taiwan that is known for orchid show and lantern festival.
3. A famous bridge in Xiluo Township adorned with colorful lanterns during a festival.

# CULTURAL INTRODUCTION: YUNLIN COUNTY

Created for Taiwan Foreign English Teacher Program



Taiwan  
Foreign English Teacher Program

## REFERENCES:

References:

Xiluo bridge: (2024)

<https://eng.taiwan.net.tw/m1.aspx?sNo=0002115&id=5235#lg=1&slide=0>

Beigang Chaotian Temple (bird's eye view): (2024)

[https://eng.taiwan.net.tw/pic.ashx?qp=1/big\\_scenic\\_spots/pic\\_2249\\_8.jpg&sizetype=3](https://eng.taiwan.net.tw/pic.ashx?qp=1/big_scenic_spots/pic_2249_8.jpg&sizetype=3)

Beigang Chaotian Temple facade: (2024)

[https://eng.taiwan.net.tw/pic.ashx?qp=1/big\\_scenic\\_spots/pic\\_2249\\_12.jpg&sizetype=3](https://eng.taiwan.net.tw/pic.ashx?qp=1/big_scenic_spots/pic_2249_12.jpg&sizetype=3)

Tai ping old street: (2024)

[https://eng.taiwan.net.tw/pic.ashx?qp=1/big\\_scenic\\_spots/pic\\_A12-00249.jpg&sizetype=3](https://eng.taiwan.net.tw/pic.ashx?qp=1/big_scenic_spots/pic_A12-00249.jpg&sizetype=3)

Yiwu Detention Pond: (2024)

<https://eng.taiwan.net.tw/m1.aspx?sNo=0002115&id=A12-00275#lg=1&slide=0>

Yunlin map: (2024)

<https://www.yunlin.gov.tw/english/cp.aspx?n=1297>

Yunlin mascot: (2024)

<https://www.yunlin.gov.tw/english/cp.aspx?n=1304>

Orchid show: (2024)

<http://eng.taiwan.net.tw/m1.aspx?sNo=0002019&lid=080941>