

FREE
Please Take One!

OVER 4 MILLION
Readers Weekly
Nationwide

TIDBITS®

OF KOOTENAI COUNTY IDAHO, FEB 2ND 2026

The Neatest Little Paper Ever Read

www.tidbitscda.com For Ad Rates call: (208) 755-9120 tidbitscda@gmail.com



(208) 719-0009 Hayden
(208) 457-7077 Post Falls
Open 7 days a week

Fu-Ki
Fu-Ki Japanese
Steakhouse + Sushi
5895 N. Government Way Hayden Idaho 83835
1500 E. Solstice Way, Post Falls, ID 83854

Concrete Flatwork
Commercial / Residential / 35 yrs. Experience

Decorative Stamps - Driveways - Walkways - Shops
Patios - Covered Patios - Foundations - Footings



208.956.0020
License RCE-66389

YOCHUM
LANDSCAPING, LLC
Licensed & Bonded yochums.com



Snowplowing, snow liquid de-icer, granular de-icer and snow sanding

- Commercial & Residential Snow Removal
- Landscape Installations and Designs
- Trees
- Lawn Care
- Water Features

Call for an Estimate Today - 208-500-1660

REACH OUT TODAY FOR A FREE HOME VALUATION!

YOUR REAL ESTATE MARKETING SPECIALIST SINCE 1994



CENTURY 21 Butler & Associates

KOSH & SUZAN
208.660.6948 C21RealEstateTeam.com

AFFORDABLE ROOFING & REPAIR SERVICE

Why replace your roof when you can just fix it?

RE-ROOFS and REPAIRS
Over 30 Years Experience - Licensed and Bonded



Freddie
208-704-2190

TIDBITS® CONSIDERS LOVE AFFAIRS

by Janet Spencer
Biologists agree that life's main purpose is to find a mate and leave DNA behind before dying. Here are some examples of outrageously weird ways some creatures accomplish this feat.

- MATING MAYHEM**
- A species of Australian insect-eating marsupial mouse called Antechinus has developed slightly unusual mating habits. The female mates with as many partners as she can find. Her brood is born in the spring, at the height of the insect hatching season. Every single one of her babies is likely to have a different father. She gives birth to three times as many babies as she can possibly support. Only the strongest survive, hidden in her pouch for an inordinately long time (in mouse terms). The others perish.
 - The female Suriname toad transfers her eggs to the male for fertilization. The male then deposits the fertilized eggs on the female's back. Her skin grows over and around the eggs, surrounding each one in a protective bubble like baby bees in a honeycomb. Up to 100 eggs will incubate this way until they reach maturity several months later. They depart from their mother as fully formed miniature adult toads, whereupon Mom sheds her pockmarked skin and goes in search of a new mate.

(cont)

my **FRANCHISE CONNECTIONS** 208-755-9120



Find a Franchise Opportunity in Coeur d'Alene! Call Evelyn today!

myfranchiseconnections.com

Schedule a free consultation
<https://scheduler.zoom.us/evelyn-howe/consulting>

WANT TO PUBLISH A TIDBITS® IN YOUR AREA?

We provide the opportunity for success!

Call 1.800.523.3096 (US)

www.tidbitsweekly.com

AUCTION NORTHWEST, LLC

We are ready to consign your equipment, vehicles, tools, ATV's, building supplies & more!

Feel free to give us a call at 208-994-6003

auCTION-nw.com

Located at 3156 N Beck Rd, Hauser Idaho
Open Tues-Fri 8am-4pm (Monday's by appointment).

Peck & Peck EXCAVATING



BOULDERS
SCREENED TOPSOIL
3 WAY MIX FOR GARDEN BEDS

Call us today at 208-773-6559

Cheryl Burchell GOLDSMITHS
CHERYLBURCHELL.COM

Idaho Opal

Your trusted local jewelry service provider.

208-676-1645 1524 NW BLVD COEUR D'ALENE

amazon AMAZON ONLINE STORE DONE FOR YOU!

First-class e-commerce businesses built for you!

Honest. Reliable. Stable. Online storefronts

No inventory - no packing enjoy 100% passive income

For more info, email myfranchiseconnections@gmail.com or call Evelyn at 208.755.9120

Entering our home shouldn't feel like leaving yours

Call 208.457.3403 and ask for a tour!

The Lodge ASSISTED LIVING

AWARD-WINNING Assisted Living
www.LodgeLiving.net

- Homestyle Meals
- Large Private Suites
- Private Bathrooms
- On-Site Salon
- Gardening Beds
- Personalized Care

Three Convenient Communities:
The Lodge at Riverside Harbor 1 & 2, 52 & 58 N. Cedar Street, Post Falls, ID
The Lodge at Fairway Forest 1 & 2, 3989 & 3991 N. Player Dr, Coeur d'Alene, ID
The Lodge at Bristol Heights, 2220, 2230, 2240 & 2250 W. Prairie Ave, Coeur d'Alene, ID



For more info see page 13

IMPACT
PAINT & COLLISION REPAIR
208-765-2805

PAINT & COLLISION REPAIR

- Approved by All Insurance Companies
- Free Estimates
- Frame Repair
- Expert Color Matching

I-CAR GOLD CLASS PROFESSIONALS

765-2805
116 E. Appleway CDA
www.impactautobodyandpaint.com



AUCTION NORTHWEST, LLC

We are ready to consign your equipment, vehicles, tools, ATV's, building supplies & more!

Feel free to give us a call at 208-994-6003

auction-nw.com

Located at 3156 N Beck Rd, Hauser Idaho
Open Tues-Fri 8am-4pm (Monday's by appointment).



TIM'S SPECIAL CUT MEATS



(208)772-3327
525 N. Graffiti Street Post Falls, ID 83854

REACH OUT TODAY FOR A FREE HOME VALUATION!

YOUR REAL ESTATE MARKETING SPECIALIST SINCE 1994

KOSH & SUZAN

208.660.6948 C21RealEstateTeam.com



TIDBITS
Advertise today!
Evelyn 208-755-9120



CONTACT INFORMATION FOR TIDBITS OF KOOTENAI COUNTY



EVELYN HOWE : 208-755-9120



TIDBITS



Evelyn Bevacqua Howe 208- 755-9120
212. W. Ironwood Dr., Suite D,# 224, Coeur d'Alene, ID 83814
Cell: 208.755.9120 Email: Tidbitscda@gmail.com www.tidbitscda.com Facebook/tidbitscda

MATING MAYHEM (cont)

- The animal kingdom is divided into two parts: vertebrates (which have a spine) and invertebrates (no spine). The smallest vertebrate on the planet is the male anglerfish. The female anglerfish sports a delicious-looking glowing blob that dangles tantalizingly in front of her teeth, luring in prey. The male, however, isn't so lucky. His only job is to find a female and latch onto her, where he becomes permanently affixed to her body. He survives off her juices like a parasite, eventually losing every part of his body except those required to fertilize the eggs she releases. Over time, he shrinks to the point where the female out-weighs him by 500,000 times. The male remains welded to her "until death do you part." The female may sport a collection of suiters in this way, which is necessary because she releases sheets of egg sacks 30 feet (9 m) long. It's estimated that only 1% of male anglerfish find a mate.
- The mustache toad of China grows a row of ten or 20 thorny spikes on its top lip every mating season. These lances, made of keratin, are formidable weapons when fighting for the right to mate with the fair maiden toad. It's been estimated that 100% of male mustache toads are injured, though rarely killed, during the fencing matches of mating season. Once mating has been accomplished, the male toad glues the collection of eggs to the underside of a damp, shady nook, where he guards them with his life as the mother toad goes off to pursue other mates.
- Both male and female jumping spiders have ultraviolet patches on their heads and forelegs that fluoresce green and blue, indicating willingness to approach each other to mate. When researchers covered these patches, no mating occurred.

(cont)

my **FRANCHISE CONNECTIONS** 208-755-9120

SUCCESS **FRANCHISE**

Find a Franchise Opportunity in Coeur d'Alene! Call Evelyn today!

myfranchiseconnections.com

Schedule a free consultation
https://scheduler.zoom.us/evelyn-howe/consulting




- "Keep cats indoors during very cold weather. They are particularly vulnerable to freezing. If you can leave the curtains drawn on a window where Kitty can look outside and sunbathe, she probably will be happy." -- M.R. in Washington
- This is some good advice given to me by my grandmother if you have lots of outdoor or feral cats in your area: Start your car with a bang -- on the hood, that is. When the overnight temperature dips, cats know to find someplace that is wind-shielded and off the ground, and sometimes, that means they will climb up into your engine area to hunker down. If your car starts, they can be hurt or even killed. Give the hood a knock to let a cat know to get out quick.
- Pet paws need extra care in the cold months, especially dogs that must be walked in icy and snowy conditions. Here's a great tip from Y.L. in New York: "I keep a small towel with me on my daily dog walks, but I also wash off my dog's paws with a warm washcloth when we return. Another thing I do is to rub petroleum jelly into her pads once a day. They really take a beating having to go out three times a day in salty, muddy, cold conditions. She won't wear doggie booties, so this works best for us."
- If you keep birds, a reminder: Never preheat pans on high heat, especially nonstick pans. They can let off a chemical that you or I cannot even detect, but can be a health hazard for your bird friend that is in the kitchen area. Don't keep birds in the kitchen when cooking.

Send your tips to Now Here's a Tip, 1800 Pembroke Dr., Suite 300, Orlando, FL 32810.
(c) 2026 King Features Synd., Inc.



MATING MAYHEM (cont)

- Off the coast of California lives a singing fish. The male toadfish builds a nice nest on the sea floor and then manipulates its swim bladder to “sing” a song to woo the ladies. However, there are two different types of male toadfish. The large Alpha toadfish does all the singing and nest-building. The smaller Sneaker toadfish hides nearby. When the Alpha male’s song attracts a female, she lays her eggs in his nest. While the Alpha dude is distracted, the puny Sneaker fish dashes in, fertilizes the eggs, and makes a speedy getaway. Clueless Alpha guy then spends weeks guarding the fish eggs that aren’t even his, while the female goes on her way in search of a different singing fish to mate with.
- The pearlfish got its name due to a very peculiar mating method. The male pearlfish darts inside a mollusk, where it uses its swim bladder to create a vibrating song. The shells of the mollusk act as an amplifier, sending the mating call out into the ocean. When a female pearlfish shows up, she swims away after having her eggs fertilized – but the male remains inside the mollusk, where it dies. The mollusk, finding this irritating, coats the dead pearlfish with the same substance that it uses to coat grains of sand and other annoyances. Therefore, some surprised diners cut into their mollusks hoping for pearls, and find instead a pearl-covered pearlfish.
- Land snails are hermaphrodites, both male and female, meaning that either snail in a mating pair can fertilize the other’s eggs. Both are equipped with “love darts” which they use to stab their partner, inserting a packet from an antenna-like projection on their face under the skin of their partner. Some snail species shoot single darts, while some shoot multiple darts, and still others use a single dart to jab their mate repeatedly.

(cont)

NOW OPEN IN A NEW LOCATION!

National Mattress & Furniture Moves to 411 W Haycraft Ave, Suite 1A, Coeur d'Alene, Idaho



National Mattress & Furniture has officially moved to a new location and is now welcoming customers at 411 W Haycraft Ave, Suite 1A, Coeur d'Alene, Idaho.

Locally owned and serving the community since 1999, National Mattress & Furniture is a trusted destination for mattresses, adjustable beds, bedroom furniture, and sleep accessories. Known for their knowledgeable, no-pressure approach, the team helps customers find the right sleep solutions for their comfort, lifestyle, and budget.

With the new Haycraft Avenue location, shoppers can enjoy the same great selection, personalized service, and commitment to quality that North Idaho residents have relied on for decades — now in a fresh, convenient space.

New Address: 411 W Haycraft Ave, Suite 1A, Coeur d'Alene, Idaho.

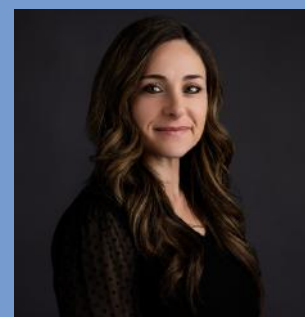


REALTY NORTHWEST

YOUR LOCAL REALTORS FOR LIFE



KIRK HOLDING
KIRK@SOLDNW.COM
(509) 362-1581



SARAH ROBERTS
SARAH@SOLDNW.COM
(208) 661-8636



COMPLEMENTARY BONUSES WHEN YOU LIST WITH US:

- HANDYMAN SERVICES
- PROFESSIONAL CLEANING
- INTERIOR DESIGN CONSULTATION
- WINDOW CLEANING

THINKING OF MOVING - NOW LATER?

TEXT “MOVE” TO (208) 661-8636 FOR A QUICK LOCAL SNAPSHOT.

Concrete Flatwork
Commercial / Residential / 35 yrs. Experience

Decorative Stamps - Driveways - Walkways - Steps
Patios - Covered Patios - Foundations - Footings

208.956.0020
License RCE-46789



"You've got to stop putting your foot in your mouth, Senator!"

Laugh a bit with TIDBITS

Q: What happens to a chipmunk during mating season?
A: They get kinda squirrely!

MATING MAYHEM (cont)

- When whales and other bony fish die, they drift to the sea floor, where they are colonized and consumed by bone-eating worms. These worms appear to take root in the bones of the fallen, dismantling them gradually through filaments that penetrate deeply into the bones. Scientists were curious when they discovered that every single specimen they examined was female. Where did the male bone-eating worms hang out? Not until they dissected some of the lady worms did they discover that the men are hanging out inside the long, tube-like bodies of the women. In fact, each female hosted up to a hundred different males inside her, each one microscopically small, measuring 100,000 times smaller than their mates. Each male continuously fertilizes whatever eggs the female is producing. Unable to eat, they soon die and are replaced by other males who continue the work.
- It's well known that many insect species, such as ants, termites, and some species of bees, congregate in communities that revolve around the amazing egg-laying capacity of their queen. Less well known is the fact that communities of pistol shrimp operate in the identical manner. The queen shrimp, the largest member of the community, is completely serviced by the resident King shrimp, while being fed and tended to by the myriad servant shrimps that surround her. All of this occurs inside their chosen undersea kingdom, consisting of a large sponge. The pistol shrimp's method of procuring food for the Queen and the colony is to possess spring-loaded claws that launch seawater at the rate of 105 feet per second (32 m), which heats the stream of water to 8,000°F (4,427°C) sending out a shockwave that kills prey instantly. Pistol shrimp also communicate by snapping their claws, warning the community of threats.

Strange BUT TRUE

By Lucie Winborne

- Actor Paul Newman once said he was tired of people asking him to remove his sunglasses so they could see his famous blue eyes, confessing that his stock response was, "I would take off my sunglasses, madam, but my pants would fall down."
- Six million pounds of space dust settle on Earth every year.
- The Bahamas once boasted an undersea post office, Sea Floor Bahamas, established in 1939, which allowed mail to be posted with a unique "Sea Floor" postmark, which became a hit with stamp collectors until the office closed in 1942.
- Many birds' feathers weigh more than their bones.
- A hill in New Zealand is named Taumatawhakatangihangakoauauotamateapo kaiwhenuakitanatahu.
- Astronauts on Mars won't just make plans based on temperature, but will also need to consider tau, the level of particulate matter in the atmosphere. High tau levels will block sunlight to solar-powered rovers.
- A coyote can hear a mouse moving under a foot of snow.
- Since 1971, Lake Superior State University in Sault Ste. Marie, Michigan, has issued permits to unicorn hunters.
- The 1967 Outer Space Treaty forbids any nation from trying to own the moon.

Thought for the Day:

"Imperfection is beauty, madness is genius, and it's better to be absolutely ridiculous than absolutely boring." -- Marilyn Monroe
(c) 2026 King Features Synd., Inc.

Independently Owned and Operated

Licensed Bonded & Insured

Mr. Rooter
PLUMBING

a neighbourly company

Residential & Commercial Plumbing	Septic System
Emergency Services	Water Filter and Softener
Remodeling Services	Gas Line Repair & Replacement
Garbage Disposals	Water Heaters
Sewer and Drain Cleaning	Trenchless Sewer Line Repair and Replacement
Irrigation Systems	

We are here to serve you call 208-668-0007

Email: Spokane.owner@mrrooter.com www.mrrooter.com/cda

HOCUS-FOCUS BY HENRY BOLTINOFF

Find at least six differences in details between panels.

Differences: 1. Side mirror is moved. 2. Grille is different. 3. Sign is taller. 4. Door handle is different. 5. Fence is different. 6. Headrest is added.

KOVELS' ANTIQUES & COLLECTIBLES

By Terry and Kim Kovel
 PHOTO CREDIT: Heritage Auctions
 PHOTO CAPTION: Daum designed many vases with flowers molded from ground glass. A vase like this looks like a bouquet on its own, and the flowers still look fresh after about a hundred years.



Pate-de-verre

The Daum glass factory of Nancy, France, is famous for its cameo glass, but that isn't the only kind it made. When Jean Daum founded the factory in 1875, he made cut and enameled glass. His sons Auguste and Antonin started an art glass department in 1885, adapting to the art glass movement and art nouveau style of the time.

The company started making more ornate types of glass like cameo glass and pate-de-verre. These were very old techniques, but newly popular as they experienced a resurgence in the 19th century. Pate-de-verre was made in ancient Egypt. The term means "glass paste." It is made by combining ground glass with an adhesive and molding this mixture into forms. It proved to be a good fit for the art nouveau period, when designs drew inspiration from the natural world, especially flowers and plants.

Glassworks like Daum made pate-de-verre pieces with three-dimensional flowers. They are often valuable today. This Daum vase made to look like a bunch of daffodils sold for \$2,125 at Heritage Auctions.

Q: I have a collection of Beanie Baby bears that would like a new home. How can I find them a good one?

A: The resale market for Beanie Babies has been ongoing since the fad exploded in the 1990s. It is still active, although prices are not as high as they were during the original craze. Social media websites like Facebook Marketplace or Craigslist can help you find Beanie Babies collector clubs that may be interested in your bears. They may also sell at estate sales or toy auctions. Websites like eBay and Etsy are also popular places to sell; but if you use them, remember that asking prices are not the same as sold prices. You will see Beanie Babies listed for thousands of dollars on these sites, but that is what the seller is asking, not necessarily what buyers are paying. To see more accurate values on eBay, check "Sold Items" under Advanced Search. There are also several websites specifically for Beanie Baby collectors, like tycollector.com and beaniebabiespriceguide.com, that can help you find the value of your bears. Of course, if you are looking to donate your Beanie Babies and they are in excellent condition, you should contact local charity groups or local hospital.

CURRENT PRICES

World's Fair, banner, 1876, Philadelphia International Exhibition, Centennial, George Washington portrait, multicolor, jacquard, blue fringe, silk, 10 1/2 x 7 inches, \$160.

Trunk, nagamochi, lift lid, lacquer, gilt armorial devices, scrolling leaves, latch closure, handle, paper lining, Japan, late 1800s, 14 x 29 x 17 inches, pair, \$500.

Rug, soumak, six medallions, blue field, red, orange, brown, ivory, stylized flower border, Uzbekistan, 9 feet 6 inches x 5 feet 7 inches, \$745.

For more collecting news, tips and resources, visit www.Kovels.com

(c) 2026 King Features Synd., Inc.

Creative Healing Massage



Body Intelligence:

- Biodynamic Craniosacral Therapy
- Creative Healing Massage
- Swedish
- Deep Tissue
- Hot & Cold Stone
- Sports Massage
- Foot Reflexology

Shelley Colombini
LMT & NCBTMB

Located in Hayden
Call for appointment
208-755-7802

The Children's Warehouse: New and Gently used items




Tuesday-Saturday 10:00-5:00
 2120 N 3rd Street in the Warehouse
 Everythingbabycda@gmail.com
facebook.com/profile.php?id=100057480407095



MEET THAT SPECIAL SOMEONE THAT YOU TRULY DESERVE

We gladly invite you to join:

SOULMATECONNEXIONS.com

King Crossword

ACROSS

- 1 Table support
- 4 Mosque leader
- 8 Island near Java
- 12 Terre Haute sch.
- 13 Terse denial
- 14 Poetic tributes
- 15 Ecol. watchdog
- 16 Faints
- 18 Word list, for short
- 20 Japanese pond carp
- 21 Sty chow
- 24 Rebuffs
- 28 Review in detail
- 32 Pesky insect
- 33 Friendly leader?
- 34 Albacore and yellowfin
- 36 Playwright Levin
- 37 Finn's floater
- 39 Revamp
- 41 Vampire, by nature
- 43 Nobelist Walesa
- 44 Bar bill
- 46 Savory taste
- 50 Begin anew, as on January 1
- 55 — Angeles
- 56 California valley

1	2	3		4	5	6	7		8	9	10	11
12				13					14			
15				16				17				
18			19				20					
			21		22	23		24		25	26	27
28	29	30					31		32			
33				34				35		36		
37			38		39				40			
41				42		43						
			44		45			46		47	48	49
50	51	52				53	54			55		
56					57					58		
59					60					61		

- 57 Egyptian river
- 58 Book-spine abbr.
- 59 Afternoon affairs
- 60 Darkens
- 61 Oklahoma city
- DOWN**
- 1 Schreiber of "Ray Donovan"
- 2 Hockey legend Phil, to fans
- 3 Avocado dip, for short
- 4 Rorschach pattern
- 5 Curly's brother
- 6 Devoured
- 7 Moo juice
- 8 Fan disapproval
- 9 Pt. of speech
- 10 Author Harper
- 11 Leb. neighbor
- 17 "Mayday!"
- 19 Bat wood
- 22 Egg
- 23 Prison-related
- 25 Rice or Auburn (Abbr.)
- 26 Naked
- 27 Rating unit
- 28 Basil or thyme
- 29 Smoothie berry
- 30 Cushy
- 31 Yard tool
- 35 Locks down
- 38 Block-dropping video game
- 40 Resistance unit
- 42 Scoundrel
- 45 Connection
- 47 Edison's middle name
- 48 Disposition
- 49 Actress Fisher
- 50 Retired jet
- 51 Dead heat
- 52 "I — Rock"
- 53 Half of XIV
- 54 Shade tree

© 2026 King Features Synd., Inc.

CryptoQuote

AXYDLBAAXR
is **LONGFELLOW**

One letter stands for another. In this sample, **A** is used for the three L's, **X** for the two O's, etc. Single letters, apostrophes, the length and formation of the words are all hints. Each week the code letters are different.

GSJ ZBCZWFJ WH YPHJ PF
 GW OPFMWAJC XWBC EPHG.
 GSJ NJDQPQE WH YPHJ PF
 GW EPAJ PG DUDX.
 — ODAPO APFMWGG

©2026 King Features Synd., Inc.

Five Spot™

Cut the cards

T	R	I	C	K

A single round of play in bridge

Instant

Outline

Look inappropriately

Type of beam

Car buyer enticements

Solve each row by replacing one letter from the answer above or below and scrambling to make a new word. When complete, the top and bottom words will have no letters in common.

Five Spot is a trademark of Michael Hollister. See more at www.fivespotgame.com

02625

COOL CONNECTIONS CDA DOES BUSINESS WITH PEOPLE WE TRUST



COOL CONNECTIONS CDA
CONNECT - SUPPORT - GROW

Cool: Fashionably attractive or impressive (well, at least we think so!).

Connections: A relationship in which a person, thing, or idea is linked or associated with something else - like ensuring life is Fun and Meaningful!

Contact:
tidbitscda@gmail.com, Cell: 208.755.9120

What's important is that we connect - that we join together, to support each other in creating a rich and meaningful life, now.

JOIN OUR FACEBOOK GROUP HERE



Patal Pushers Nursery

Stacey Mann
201 E 6th Avenue
Post Falls ID 83854
208-763-4355
patalpusherspf.com



Angie Dethloff
Realtor
Century 21 Beutler & Associates
208-659-5918
angie@21goldchoice.com
AngieDSellsHomes.com



Karla O'Neill
National Mattress and Furniture
509-290-0838 mobile
208-762-0800
411 W Haycraft Ave, Suite 1A,
Coeur d'Alene, Idaho,
cdamattress.com



Judey Brown, Realtor
ABR, AHS, CNE, EPRO, RSPS, SFR
Coldwell Banker Schneidmiller Realty
Sterling Society Award
Circle of Excellence Award
208-699-2727
www.downtownjudeybrown.com



Dana & Charles Specht
Wealth Management Advisor
Managing Director
Office: (208) 518-3855
FAX: (208) 209-5272
www.cwsinvest.com
E-Mail: Dana@cwsinvest.com



Leslie Janney
Affari Travel
cruiselandair29@gmail.com
208-210-9285
facebook.com/Affaritravel/



Malvagio's Italian Trattoria & Catering Co.
Wood-fired artisan Pizza, gourmet salads, scratch-made pasta @ mobile cater
Come in as our guest, leave as family!
4055 N Government Way
Coeur d'Alene, Idaho
Phone: 208.930.4348



Jenn Profumo
Independent cabi Stylist & Team Leader
925-784-4706
jennprofumo@gmail.com
jenniferprofumo.cabionline.com



Kim Brown
Agency Manager | National Field Trainer
Advantage Profit Systems
KimBrownAPS@gmail.com
208-964-2978
AdvantageProfitSystems.com
Hiring in all 50 states!



Crissy Schinmann
Realtor
208.651.7353
Licensed in Idaho & Washington
BusyCrissy@kw.com



Cheryl Freeman
with "A Better life"
cdfreema@msn.com
cherylfreeman.goherbalife.com



WALDO Interior Design & Painting
Trisha Waldo
208.512.4418
trisha@waldointeriors.com
waldointeriors.com





TONI PALMER
REAL ESTATE

Toni Palmer
Realtor
Cell: 509.789.0422
Tonipalmerrealty@gmail.com
ToniPalmerRealty.com





VPC ELECTRIC

Amanda Burnett
Office Manager & Business Operations
VPC Electric
844-715-7233
vpcelectrician.com





BROKERED BY
exp REALTY
LegalShield

Kadee Gittel
Formerly Kadee McGwier
Realtor & Idaho LegalShield Associate
Licensed in Idaho, Washington & Montana
(208) 449-2023 | Cell
kadee@summitadvisornetwork.com
facebook.com/SummitHomesNIW/





Total Body Flow Massage

LaVonne Ayoub, LMT
Master Massage Therapist
Total Body Flow Massage
Premiere In-Home Massage Services
Licensed in Idaho & Washington
MAS-4251 / MA 60252097
TotalBodyFlowMassage.com
lavonneayoub@pm.me
208-277-7889





LUXURY SEASONAL PORCH DECORATING

Jessica Christensen
Luxury Seasonal Porch Decorating
Currently booking for Fall discounts for returning customers for the Winter season!
208-797-0131
Follow facebook.com/the.sarava.life





PAX DRY CARPET
ORGANIC - LOW-MOISTURE - FAST DRY
Leaves carpets fluffier and refreshed

Mimi Hiibel
Pax Dry Carpet
208.561.1107
mihibel@gmail.com

Special
2 rooms \$ 120
Area rug \$ 95
SENIOR-FRIENDLY PRICING \$80 for 2 Rooms





HOME for SALE
Samantha Jones
208.770.0305
samjones@idaho.com

Samantha Jones
ID & WA Broker, Realtor
208.770.0305
360.241.7940
Sam@SammyJProBroker.com





Reclaimed Cottage & Vintage Market

Reclaimed Cottage & Vintage Market
DIY supplies, workshops, vintage market, handmade, antique, new items
208-719-0027
7352 N Government way,
Suite B & C, Dalton Gardens, ID 83815
open 10-5 Tuesday- Saturday





Lake City Spa

Kasey Boyle
Licensed Esthetician
Lake City Spa
208-215-6912
kaseylauraine@yahoo.com



COOL CONNECTIONS CDA DOES BUSINESS WITH PEOPLE WE TRUST

WE ARE GROWING! JOIN THE FACEBOOK!

Even Exchange by Donna Pettman

Each numbered row contains two clues and two 6-letter answers. The two answers differ from each other by only one letter, which has already been inserted. For example, if you exchange the A from MASTER for an I, you get MISTER. Do not change the order of the letters.

- | | | | |
|--------------------------|--------------|-----------------------|--------------|
| 1. Young female horse | __ I ____ | Foolishness | __ O ____ |
| 2. Restaurant server | __ _ I ____ | Mr. Mitty or Cronkite | __ _ L ____ |
| 3. Serena Williams' tool | __ A ____ | Spaceship | __ O ____ |
| 4. Sluggish creature | S ____ | Fabric | C ____ |
| 5. Code inventor | __ _ R ____ | Mickey or Minnie | __ _ U ____ |
| 6. Alternate route | __ _ T ____ | Wolf down | __ _ V ____ |
| 7. Boxer Sonny | __ _ _ O _ | Eavesdrop | __ _ _ E _ |
| 8. Groucho's quiet kin | __ _ _ _ O | Angelic instruments | __ _ _ _ S |
| 9. Deep red gem | __ _ _ _ _ T | Harvest | __ _ _ _ _ R |
| 10. Alf or ET | __ _ I _ _ | Steve or Woody | __ _ L _ _ |

Wishing Well®

8	7	8	3	4	6	2	6	2	7	4	2	6
H	L	A	S	I	V	S	A	P	O	N	E	R
7	8	3	5	4	6	5	6	4	3	4	6	5
V	V	T	U	C	I	S	E	O	R	M	T	E
7	8	4	5	8	3	6	5	2	4	5	8	3
E	E	E	C	F	E	Y	O	C	A	M	I	S
6	4	5	3	2	5	4	2	4	5	6	4	5
I	U	M	S	I	O	G	A	M	N	S	E	S
2	5	8	4	2	5	6	8	7	3	4	2	8
L	E	R	N	E	N	Y	M	E	R	T	V	W
4	7	6	7	8	3	6	2	7	5	7	8	5
E	N	O	D	I	E	U	E	U	S	R	L	E
3	7	8	6	3	4	2	7	6	3	2	3	3
D	E	L	R	U	D	N	S	S	C	T	E	D

HERE IS A PLEASANT LITTLE GAME that will give you a message every day. It's a numerical puzzle designed to spell out your fortune. Count the letters in your first name. If the number of letters is 6 or more, subtract 4. If the number is less than 6, add 3. The result is your key number. Start at the upper left-hand corner and check one of your key numbers, left to right. Then read the message the letters under the checked figures give you.

CHECK OUT OUR PODCAST!



LISTEN TODAY!
FIND VITALHEALTH4YOU ON YOUR FAVORITE PODCAST APP

OR GO TO
VITALHEALTHCDA.COM/PODCASTS/

VITALHEALTH4YOU DR. HOLLY CARLING AND ALICIA BALLEJA

HealthBits

By Dr. Holly Carling

MINERALS: THE FOUNDATION OF FUNCTION

The foundation of all life is minerals. Minerals provide a rich substance for the life of plants, which then give us, humans, as well as animals, insects, and most life forms, life. When the body is “returned to the dust” what remains are different forms of calcium, iron, potassium, magnesium, sodium and silica. But all minerals have intrinsic value in the health of our bodies and our minds.

Minerals help initiate many actions in the body, from nerve propagation, to heart rhythm, to tissue fluid balance. We need minerals, such as calcium for healthy connective tissue, skin and joints, as well as bones and teeth. That means, if you are deficient, those tissues could be predisposed to untimely breakdown, slow healing, or inflammation.

Most people feel they get adequate calcium and other minerals in their diet. Many forms of calcium either in the diet or in supplement form are very difficult for the body to breakdown. If there is a digestive challenge, it is even more difficult. If it is an unusable form, you may be subject to calcium excess challenges, such as bone spurs, arthritis, kidney or gall stones and other problems. Quality calcium (and other minerals) is critical in order for the body to utilize it properly.

Potassium, as another example, is needed for healthy mucous membranes. Mucous membranes are involved with absorption and

secretion. They include nostrils, lips, mouth, ears, eyelids, genital area and others.

Potassium is also needed for healthy metabolism, nervous system functioning, and muscle contraction.

Potassium and calcium are critical for healthy heart function.

Magnesium is important for the muscles, especially in relaxation, in bone and is important for many metabolic functions. Iodine is needed for thyroid health and other metabolic hormones. Even sodium (in natural form) is needed for metabolism, purification, normal function of muscles and nerves and healthy blood pressure.

Minerals are also critical to the functioning of every organ that secretes a hormone – all members of the Endocrine System. For example, you need iodine for the thyroid, chromium for the pancreas, sodium and copper for the adrenals, manganese for the pituitary and zinc for the ovaries and gonads. There are many more minerals needed by the body for hundreds of other functions. The point of all this, is that if you want your organs, tissues, and various functions to behave properly, you have to give them the fuel that they need – Minerals! Of course, you also need good vitamins, good fats, good proteins, good carbs, water, etc. to help them along!

Your body only works as well as the foundational building blocks provided. Make sure your diet is rich in a variety of minerals by making sure you get them in a food supplement form which contains the whole gamut of minerals, and not just a few!



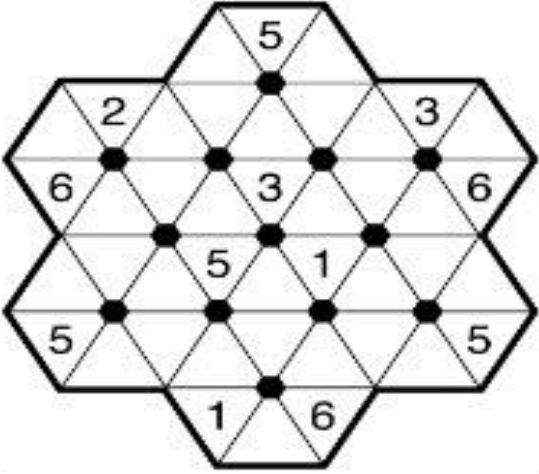
Dr. Holly Carling is a Doctor of Oriental Medicine, Licensed Acupuncturist, Doctor of Naturopathy, Clinical Nutritionist and Master Herbologist with over four decades of experience. Dr. Carling is a “Health Detective,” she looks beyond your symptom picture and investigates WHY you are experiencing your symptoms in the first place. Dr. Carling is currently accepting new patients and offers natural health care services and whole food nutritional supplements in her Coeur d’Alene clinic. Visit Dr. Carling’s website at www.vitalhealthcda.com to learn more about Dr. Carling, view a list of upcoming health classes and read other informative articles. Dr. Carling can be reached at 208-765-1994 and would be happy to answer any questions regarding this topic.

Medical/Health Disclaimer: The information provided in this article should not be construed as personal medical advice or instruction. No action should be taken based solely on the contents of this article. Readers should consult appropriate health professionals on any matter relating to their health and well-being. The information and opinions provided here are believed to be accurate and sound, based on the best judgment available to the author, but readers who fail to consult appropriate health authorities assume the risk of any injuries.

SNOWFLAKES

by Japheth Light

There are 13 black hexagons in the puzzle. Place the numbers 1 - 6 around each of them. No number can be repeated in any partial hexagon shape along the border of the puzzle.



DIFFICULTY THIS WEEK: ◆

◆ Easy ◆◆ Medium ◆◆◆ Difficult

© 2026 King Features Synd., Inc.



NORTH STAR

RETIREMENT AND ASSISTED LIVING COMMUNITY



Call to tour today!

208-765-5505

2340 W. Seltice Way Coeur d'Alene, ID 83814



By Freddy Groves

Using your GI Bill education benefits

GI Bill education benefits come with several forms of help, including a monthly housing allowance (MHA). To be eligible for a full-time allowance, you need to be enrolled in a full-time slate of classes that equal 12 credits. But it's not quite that simple.

The actual amount of money you receive for the MHA depends partially on where you live (more if the area has a high cost of living) and partially on how you attend those classes. If you're taking all of your full-time classes online, did you know that you can increase your housing allowance by taking at least one in-person class? That one class changes your MHA category to in-person, getting you more benefit money, nearly double the rate you would get for only attending classes online. If all of your classes are online, your monthly housing allowance will be approximately half of the national average, which is quite a deduction.

To find a school that qualifies for you to receive benefits, go to www.va.gov/education/gi-bill-comparison-tool. Be certain your school qualifies; the January 2026 file of GI Bill Quick Facts indicates there are over 600 suspended institutions. Ask at the school about what they call "hybrid" classes, the combination of online and in-person classes, and if they're allowed.

Many of your questions about your education benefits can be answered at www.va.gov/education/about-gi-bill-benefits/how-to-use-benefits. When it's time to apply, you can do that online at www.va.gov/education/how-to-apply. Start at the top of the page with the eligibility information. Note the service periods: 90 days of active duty after Sept. 10, 2001, or 30 days of continuous service after that date, or if you received a Purple Heart after that date.

Be sure to look at the details for the Yellow Ribbon Program. It covers several expenses the GI Bill doesn't, such as out-of-state or graduate school tuition.

Where there is a desire for education, there is usually a way to make it happen. Call the VA Education Call Center at 888-442-4551 for help.

(c) 2026 King Features Synd., Inc.



Trouble finding a pet-friendly apartment? You're not alone

DEAR PAW'S CORNER: I've been struggling to find an apartment that will accept pets. I have a parakeet named "Bert" and a big mutt of a dog named "Georgie," and while some landlords are OK with a bird, they all draw the line at dogs. My current lease is not being renewed, and I only have a few weeks left to find a place. Why do so many landlords not allow pets? I'm so frustrated. -- Cary in Waltham, Massachusetts

DEAR CARY: Trying to find a rental property in or near a major city that accepts pets is a tough slog. Why has it become so? A number of factors are at play, but they all add up to the same thing: Landlords don't want the liability and maintenance issues that they assume pets cause in rental properties.

This attitude caused pet deposits to skyrocket -- \$300 to \$500 per pet in some cases -- and "pet rent" (additional fees each month from \$35 to over \$100) to become a thing at many properties. Other landlords simply banned pets altogether, making an exception only for service animals. For renters who aren't able to come up with the extra fees, the choices they have are stark: Either try to find another place, or give up their pets in order to find housing. This has hit elderly renters especially hard, and their beloved pets frequently end up in shelters.

What solutions are there? Short term, not many. There are still some deluded folks who ask, "Why don't pet owners just buy their own house?" But most of us know the answer to that. In Massachusetts, the MSPCA (Massachusetts Society for the Prevention of Cruelty to Animals) is supporting two pet-friendly housing bills, but any change will be slow to arrive.

Emergency Pet Care
208-777-2707

Monday - Friday from 12:00PM to 8:00AM
Open 24 hours on the Weekends
3046 East Seltice Way, Post Falls

REVERSE MORTGAGE

A Better Way to Retire!
Local representative, free information

Larry Waters
NMLS #400451
p 208.762.6887
lwaters@mutualmortgage.com
Serving Idaho and Washington

Equal Housing Lender
Mutual of Omaha Mortgage, Inc. NMLS ID 1025894, FL Mortgage Lender License MLD1827, ID Mortgage Broker License MBL2081025894, WA Consumer Loan Company License CL-1025894. These materials are not from, or approved by HUD or FHA. Subject to credit approval. For licensing information, go to www.mutualmortgage.com #101677704

Micro Crossword By Elizabeth C. Gorski

Across

1 Champagne choice at a New Year's Day brunch
5 Unhurried gait
6 Fry in a bit of butter
7 "Touch of Evil" actor/director Welles
8 Teary-eyed

Down

1 Loud, strident noise
2 Awaken
3 "High five!"
4 Wee
6 "You reap what you ___"

	1	2	3	4
	5			
6				
7				
8				

© 2026 King Features Syndicate, Inc.

TIDBITS presents **QUIZ BITS**

1. What long-necked bird attracts a mate by swinging his head in a figure-8?
2. What tiny rodent is monogamous and affectionate towards their spouse?

*Sun Tan & Spa
Your Island Glow
in Coeur d'Alene*

- ★ Premium tanning beds & custom spray tans
- ★ Relaxing spa services to refresh & renew
- ★ Friendly, local team that makes you feel at home

SPECIAL OFFER
20% off any packages or memberships

6848 N Government Way Unit #104 Dalton Gardens, ID 83815 (208) 762-8267

TIDBITS presents **TRIVIA NEWSFRONT**

1. This animal announces his intentions by gifting his beloved a rock.
2. The male bower bird gifts his lady love items that are exclusively this color.
3. This Australian marsupial is pretty much perpetually pregnant.
4. This fleet-footed African ungulate attracts the ladies by sticking out his tongue.
5. This creature from Madagascar coats his tail with his scent and waves it around as advertisement.

FREE GOLD

GOLD PROSPECTING ~ AND ~ TREASURE SHOW



MARCH 7-8, 2026

Learn How To
Pan For GOLD

Raffle Prizes

Metal Detectors

Sluice Boxes

Gems & Minerals

Vendors

Rock Hound &
Prospecting
Supplies

Gold Pay Dirt

Gold & Silver
Jewelry

Dredge Equip.

Door Prizes



SATURDAY 9AM TO 5PM
SUNDAY 9AM TO 4PM

\$5.00 12 & UNDER
FREE
www.nwgpagoldshow.com



KOOTENAI COUNTY FAIRGROUNDS COEUR D'ALENE, IDAHO

BEVERAGES, BREAKFAST & LUNCH ITEMS FOR SALE
FREE GOLD FOR THE FIRST 50 PAID ADMISSIONS SAT & SUN



"Marty Supreme" (R) -- A24 scored another success, both critically and financially, with this sports comedy-drama film led by Timothee Chalamet ("A Complete Unknown"). Loosely based on table tennis player Marty Reisman's 1974 memoir, the film picks up in 1952 when a young Marty Mauser (Chalamet) is working as a shoe salesman while competing in table tennis professionally. Marty is determined to be great and make his dream of winning the British Open come true, even if he has to cut a few corners and step on some toes to get there. Meanwhile, Marty's a messy romantic whose eyes bounce between retired actress Kay Stone (Gwyneth Paltrow) and his married childhood friend Rachel Mizler (Odessa A'zion). So far, "Marty Supreme" has earned Chalamet a Golden Globe and a Critics' Choice Award for Best Actor; his sights are now on nabbing that Oscar statuette. Out to rent on Feb. 3. (Apple TV+)

"The Housemaid" (R) -- After Sydney Sweeney's silly ad about jeans started to tank her career and cost her "Christy" film to bomb, she was forced to apologize and get it together ahead of the premiere of her erotic psychological thriller. (Which ended up being somewhat of a success!) Co-starring the lovely Amanda Seyfried ("The Testament of Ann Lee") and Brandon Sklenar ("Drop"), the film follows a young woman named Millie (Sweeney) who has a criminal past and becomes a live-in housekeeper for the wealthy Winchesters. Millie soon learns that Nina (Seyfried), the mother and wife of the family, is mentally unwell and quickly begins to suffer the consequences of being her housemaid. It is only when Millie is pushed to the brink that she realizes why she was hired for the Winchesters and who this family really is. Out to rent on Feb. 3. (Amazon Prime Video)

"The 68th Annual Grammy Awards" (TV-PG) -- CBS just won't let go of Trevor Noah as the host for the Grammys, making it the sixth consecutive time that the comedian has hosted. (They just don't make hosts like they used to ...) But this is the final year that CBS will be broadcasting the ceremony, as the show has plans to move to ABC and Disney platforms after this year. Performers include Sabrina Carpenter, Pharrell Williams, and a medley that features all eight nominees for Best New Artists (including girl band Katseye and pop singer Addison Rae). Meanwhile, musicians like Bad Bunny, Kendrick Lamar, Justin Bieber, Lady Gaga and Billie Eilish are duking it out in the major categories of "Song of the Year," "Album of the Year," and "Record of the Year." Stream it now to skip all the pesky commercials and just get to the good parts. (Paramount+)

(c) 2026 King Features Synd., Inc.

Laugh a bit with TIDBITS

Some of us learn from the mistakes of others.
The rest of us have to be the others.



1. GAMES: What color is Sonic the Hedgehog in the video game?
2. GEOGRAPHY: What is the former name of the U.S. Virgin Islands?
3. MOVIES: What are the colors of the striped sweater Freddy Krueger wears in "A Nightmare on Elm Street"?
4. MEDICAL TERMS: What is a more common name for pneumothorax?
5. HISTORY: By which name is Martha Jane Canary more commonly known?
6. TELEVISION: What is Hawkeye Pierce's real first name in the "M*A*S*H" series?
7. ANIMAL KINGDOM: What is a group of larks called?
8. AD SLOGANS: Which car company uses the ad slogan "Driven by passion"?
9. MYTHOLOGY: What is the head of the Egyptian god of death, Anubis?
10. GENERAL KNOWLEDGE: What is the currency of Japan?

Answers

1. Blue.
2. The Danish West Indies.
3. Red and green.
4. Collapsed lung.
5. Calamity Jane, a sharpshooter in Western history.
6. Benjamin.
7. An exaltation.
8. Fiat Automobiles.
9. A jackal.
10. The yen.

(c) 2026 King Features Synd., Inc.

MINI SUDOKU

			1		
4			6	3	
		2			5
				6	
5					
	6	4		2	

Place a number in the empty boxes in such a way that each row across, each column down and each small 6-box square contains all of the numbers from one to six.

© 2025 King Features Synd., Inc.

STICKELERS

by Terry Stickels

What is the last number in this logical number sequence?

45 99 198 1089 10890 20691 ?

©2025 King Features Syndicate

GO FIGURE!

The idea of Go Figure is to arrive at the figures given at the bottom and right-hand columns of the diagram by following the arithmetic signs in the order they are given (that is, from left to right and top to bottom). Use only the numbers below the diagram to complete its blank squares and use each of the nine numbers only once.

	-		÷		=	1
+		+		+		
	-		×		=	16
+		÷		-		
	-		+		=	11
=		=		=		
16		1		1		

1 2 3 4 5 6 7 8 9

©2025 King Features Syndicate, Inc.

MAGIC MAZE ● SEA SHELL TYPES

UGDZWTQNKHDAXUR
 PMJGDAXVSQNNKIF
 DAXVTQOEMJHAFCA
 YWURMPPNLJNUHEF
 DBZXTUVTRIQTENO
 MKIEREIHGCFIOOD
 BZPDNYNNOGRLWL
 TRQROOONOWYUNAL
 KIHFAFCROBDSFBC
 TEMLEHFCABMIAAZ
 TEPMILXBREGUAWV

Find the listed words in the diagram. They run in all directions forward, backward, up, down and diagonally. Unlisted clue hint: *Angelic Musical Instrument*

Abalone	Conch	Fig	Melongina
Auger	Cone	Frog	Nautilus
Babylon	Cowie	Helmet	Umberium
Bonnet	Drupe	Limpet	

©2025 King Features Syndicate, Inc. All rights reserved.

FREE

SONICARE FOR NEW PATIENTS

with a new patient exam, x-rays and
recommended cleaning

Join Our Family

Erin Elliott, D.D.S. | Ken Lynn, D.D.S. | Kelly Harness, D.M.D.

POSTFALLS

Family Dental

Out on a Limb

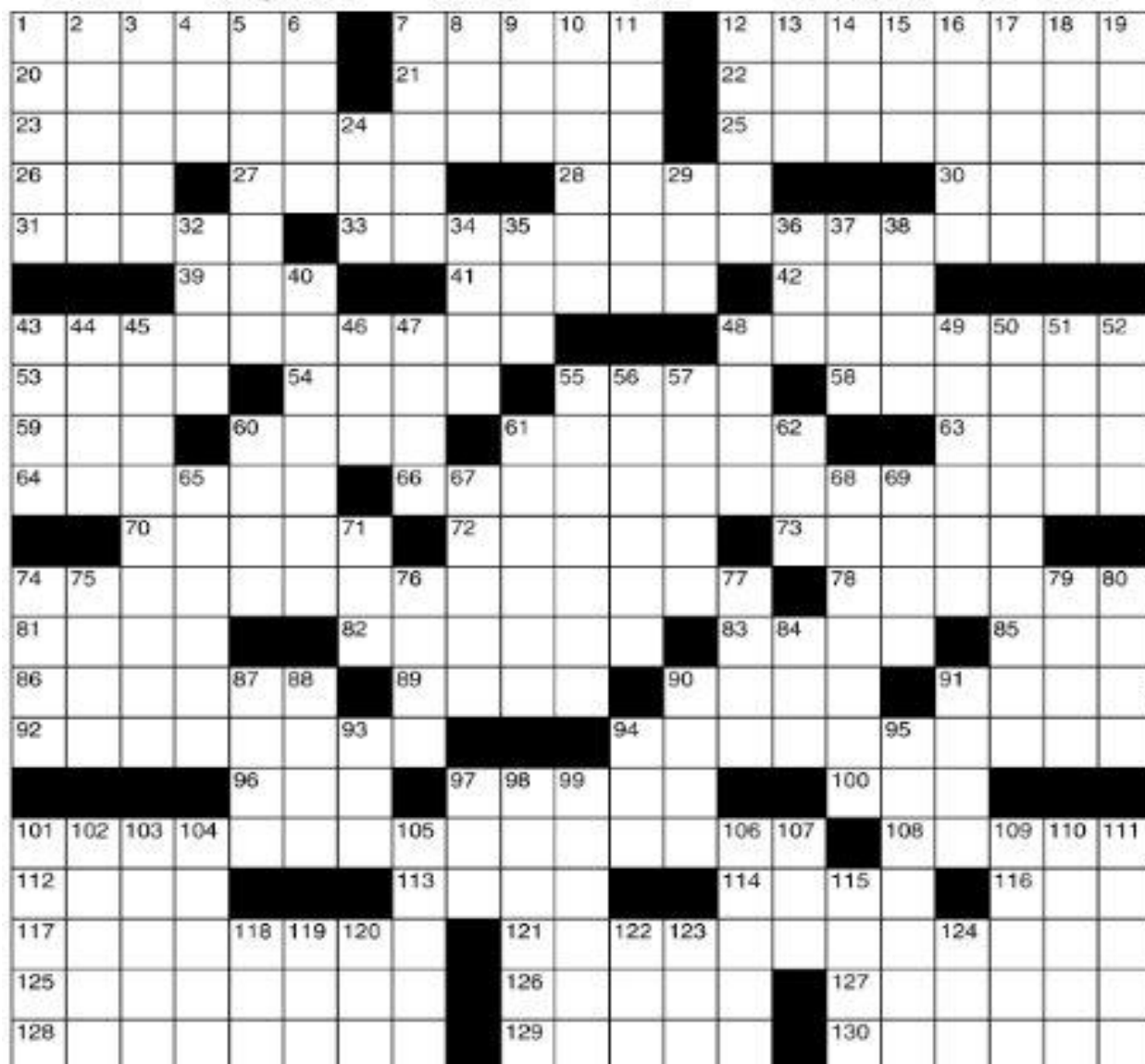


by Gary Kopervas

IF FUNXSUTAWNEY
PAUL SEES HIS AMEX BILL
FROM DECEMBER IT'S
ANOTHER SIX WEEKS OF
RAMEN NOODLES FOR DINNER

Super Crossword FILLED FOOD

- | | | | | | |
|---|---|---|------------------------------|------------------------------|-------------------------------|
| ACROSS | 48 Chilly tourist lodge | 91 Feels ill | 3 Way to mark losses | 44 Wine valley of California | 88 Fail to |
| 1 "Thank U, Next" singer Grande | 53 New Mexico art mecca | 92 Hip-hop band | 4 Fourth mo. | 45 Brief audio file | 90 Agile |
| 7 Yachts, e.g. | 54 Old New York theater | 94 Thaw after winter | 5 TV ratings name | 46 All the rage | 91 City in Iowa |
| 12 Keto dieter's nutrient calculation | 55 Whirled | 96 Roadhouse | 6 Chlumsky of "Veep" | 47 Midterm, e.g. | 93 Half of bi- |
| 20 Right-rear bowling target | 58 To a greater extent | 97 Writer Wilde | 7 Musical Mars | 48 "500" race | 94 Sink down |
| 21 Like Viking script | 59 Phased-out cartoon storekeeper | 100 "Fancy that!" | 8 "— Gang" | 49 Mine vehicle | 95 Hired |
| 22 Call to have food delivered | 60 Greek cheese | 101 Pilot's heading indicator | 9 Filmmaker Lee | 50 Prevaricates | 97 Yoko of |
| 23 Chief justice before William Rehnquist | 61 Easels, e.g. | 108 Newton who was knighted | 10 — del Fuego | 51 Genesis twin | 98 Taco toppers |
| 25 Runaway | 63 Susa's ancient land | 112 Met solo | 11 TV part | 52 Bausch & — | 99 Split with an ax, say |
| 26 Fruity drink | 64 Take care of bikers' association | 113 Fishing rod | 12 Center points | 55 Cheap cigars | 101 Actor Matt |
| 27 Reclined | 66 Bikers' association | 114 \$5 bills, slangily | 13 Previous to | 56 St. Patrick's Day event | 102 Actress Ryan |
| 28 Actress Russo | 70 Tunes for two | 116 H.S. lab class | 14 NFL goals | 57 "I give up!" | 103 Small brooks |
| 30 Chaplin of "Game of Thrones" | 72 Permissible | 117 "The Velvet Fog" | 15 OK grade | 60 Absconded | 104 Absorb the loss, in slang |
| 31 Makeovers | 73 Tiny bits | 121 Its menu might include the ends of seven answers in this puzzle | 16 Bow go-with | 61 — Artois | 105 Opinion pieces |
| 33 Application to improve blood flow | 74 Curveball that breaks over the plate at the very last second | 125 Web pop-up, e.g. | 17 Turbine part | 62 — -fi flick | 106 Lou who won three Grammys |
| 39 Stew legume | 78 Wine vessel | 126 Be of help to | 18 — Vista, Mexico | 65 — it out (fighting) | 107 Japanese sash |
| 41 Glazer of "Broad City" | 81 Wrinkly tangelo | 127 King of pop | 19 Purse piece | 67 Mary-Kate of "Beastly" | 109 Hate |
| 42 Gold, in Italy | 82 "Joan of Arc" actress Sobieski | 128 Salted-away sums of money | 24 Pen brand | 68 Latching, e.g. | 110 Garlic mayo |
| 43 Person not getting deserved acclaim | 83 Acorn trees | 129 Mails in, e.g. | 29 U.S. intel org. | 69 LGA info | 111 Makes do |
| | 85 Grassy tract | 130 Isis' brother | 32 Musical work | 71 Fa-la linkup | 115 Danish shoe brand |
| | 86 Wrecked | DOWN | 34 Like swamps | 74 Aaron in "Hamilton" | 118 Undivided |
| | 89 Santa — (some winds) | 1 In combat | 35 Gp. in the Arab League | 75 Water, in Chihuahua | 119 Rule, informally |
| | 90 Agra dress | 2 Novelist Charles | 36 Quadrennial games org. | 76 Get in return | 120 'Zine |
| | | | 37 City near Provo | 77 Mimic a lion | 122 Delhi bread |
| | | | 38 NYC area near the Village | 79 Descended | 123 Carried out |
| | | | 40 Go along with | 80 Toward dawn | 124 — Lanka |
| | | | 43 37-Down's state | 84 Actress Nicole — Parker | |
| | | | | 87 Funny Idle | |



CryptoQuip

This is a simple substitution cipher in which each letter used stands for another. If you think that X equals O, it will equal O throughout the puzzle. Solution is accomplished by trial and error.

Clue: K equals L

VTTFVX L YEHI KGVXTO
EBTVPAK BG HEB L KLOXT
IEVC GS YTLB, L YLV FTHKLOTF
"CFAST'P BGG PIGOB."

©2026 King Features Synd., Inc.



- On Feb. 16, 1959, Fidel Castro was sworn in as Cuba's prime minister after leading a guerrilla campaign that forced right-wing dictator Fulgencio Batista into exile. Castro, who became commander in chief of Cuba's armed forces after Batista was ousted on Jan. 1, replaced the more moderate Miro Cardona as head of the country's new provisional government.
- On Feb. 17, 1972, the 15,007,034th Volkswagen Beetle rolled off the assembly line and broke a world car-production record held for more than 40 years by the Ford Motor Company's Model T, which was manufactured from 1908 to 1927.
- On Feb. 19, 1473, Nicolaus Copernicus, regarded as the father of modern astronomy, was born in Torun, a city in north-central Poland on the Vistula River. He would become the first modern European scientist to propose that Earth and other planets revolve around the sun.
- On Feb. 20, 1977, an episode of the TV sitcom "Seinfeld" titled "The Pothole" debuted, with the inclusion of a storyline in which the eccentric character Kramer adopted a stretch of the fictional Arthur Burghardt Expressway via the real-life Adopt-A-Highway program.
- On Feb. 21, 2016, quadruple amputee Kyle Maynard reached the summit of Mount Aconcagua, South America's tallest mountain, after bear-crawling up the nearly 23,000-foot peak without the use of his prosthetics. Four years earlier, he'd climbed Africa's Mount Kilimanjaro in the same manner.
- On Feb. 22, 1983, Arthur Bicknell's play "Moose Murders" made its Broadway debut at New York's Eugene O'Neill Theater, and closed the very same night, earning it the unfortunate description by The New York Times as "the standard of awfulness against which all Broadway flops are judged." After the curtain fell on cue, there was no applause, leading one cast member to remark that "I don't think there ever was a show in the history of Broadway where you took a bow to silence."

SENIOR NEWS LINE

By Matilda Charles

When it's time to change doctors

Now and then, not too often but sometimes, you hear that audible click and come to the realization that you need to change doctors.

Maybe it's because once again you don't feel like your doctor is really listening to your concerns. Maybe it's because once again tests are ordered without you getting a clear explanation about why they're necessary. Maybe it's because your health concern doesn't seem to be getting better. Maybe it's because you see the physician assistant (PA) when you expect to see the doctor. Or maybe it's just because you have a gut feeling you should go elsewhere.

Whatever the reason, if the time comes to make a change, it won't be easy if you've been with your current doctor for a long time.

Your first step, once you've decided to do this, is to "interview" another doctor. You'll need to call around to see who's taking new patients or inquire among friends for recommendations. Then check out the doctor online with reviews by other people. Look at Healthgrades (www.healthgrades.com). Or do an online search with the doctor's name.

Be sure the doctor is in your insurance network and make an appointment. Go in with a written list of questions and make notes.

When you find a doctor you'd like to see in the future, you'll need to have your records transferred from the old doctor.

And that's where I part company with advice I was given. I'm told that it's best to transfer your records to a new doctor before you go to the first appointment. You'll need to decide for yourself. My preference was to meet the doctor first before records were transferred, and to not let the current medical practice know I was leaving until I was certain.

If you find the right doctor, the difficulty will be worth it.

(c) 2026 King Features Synd., Inc.

HOW DO YOU KNOW WHEN IT'S TIME FOR ASSISTED LIVING?

Deciding when it's time for a loved one to move to assisted living can be challenging. Although we may notice the signs that they are physically or mentally declining, we may also have a feeling of anxiety and guilt over respecting that person's wish to stay home. Still, there are certain signs that can help you recognize when an assisted living community might be the perfect choice for a loved one's safety and well-being.

One of the key indicators is recognizing a decline in daily activities, such as difficulty with personal hygiene, dressing, or managing medications. If your loved one is struggling with these tasks and requires frequent assistance, it may be time to consider assisted living, where they can receive support with daily routines and round the clock needs.

Another sign is increasing safety concerns. If your loved one has experienced frequent falls, wandering, or is at risk of getting lost or injured, their living situation might no longer be safe. Assisted living communities provide a more secure environment designed to help prevent such accidents.

Cognitive decline, particularly in cases of dementia or Alzheimer's, can also signal the need for more structured care. Memory loss, confusion, and difficulty managing time or money can make it unsafe for them to live

independently. Assisted living communities often have specialized programs to help residents with cognitive impairments maintain a high quality of life.

Social isolation and loneliness are also key factors to consider. If your loved one is home alone for the majority of their days because they no longer drive, or their family or caretakers are at work, they may yearn for conversation and companionship. Maybe they are no longer engaging in their regular activities or seem withdrawn? Assisted living can help foster your loved one's mental health and independence by providing social interaction with events and activities of all different natures.

Ultimately, it's about evaluating your loved one's overall health, safety, and well-being. If you notice a consistent decline in their ability to manage daily life, an assisted living community can offer a balance of independence and care, ensuring they receive the necessary support while maintaining a fulfilling life. Consulting your loved one's healthcare professionals can also help guide and support this important decision. Often, families may not even think about assisted living until an illness or emergency forces the decision. Many communities have waitlists, so do your research in advance. Not being prepared about your choices can limit your options to the best communities available when needed.

Call me today for a free consultation in navigating assisted living and memory care options.



Becky Georgius
Sales and Marketing Director
The Lodge Assisted Living and Memory Care Communities
208-457-3403

Play Better Golf with JACK NICKLAUS



Heritage Health

CENTER FOR HEALTHY LIVING

ACCEPTING NEW PATIENTS!

- Therapy Services
- Psychiatric Services
- Recovery Services
- Neurobehavioral Services

Monday - Friday: 8:00 a.m. to 5:00 p.m.

3700 West Seltice Way, Coeur d'Alene



myHeritageHealth.org

Follow Us! |

Salome's Stars

ARIES (March 21 to April 19) A gracious Lamb can learn more about a problem-filled situation than one who is openly suspicious of what could be happening. A friend might offer some well-directed advice.

TAURUS (April 20 to May 20) Getting adjusted to an unexpected change might be difficult for the Bovine, who prefers things to go according to plan. But help could come from a most welcome source.

GEMINI (May 21 to June 20) This could be a good time to get a head start on some career-related plans. The sooner you check out the pluses and minuses, the sooner you can act on your information.

CANCER (June 21 to July 22) A personal situation that you thought would no longer present a problem could suddenly produce some surprises. Try to sort things out with the help of your trusted colleagues.

LEO (July 23 to August 22) An upcoming move holds both anticipation and anxiety for LEOs and LEOs who have some big decisions to make. Advice is plentiful, but it's up to you to decide which way you want to go.

VIRGO (August 23 to September 22) Someone from a previous project could provide valuable guidance on how to handle a current problem, especially where it might involve a legal matter.

LIBRA (September 23 to October 22) A business situation presents some unexpected complications. But rather than trying to handle them all at once, it would be best to deal with them one at a time.

SCORPIO (October 23 to November 21) You just might get what you want despite the odds against it. In any event, be sure to thank all the people involved who believed in you and went to bat for you.

SAGITTARIUS (November 22 to December 21) Before you even hint at an accusation, remember that you'll have to prove what you say. So, be sure that you have what you need to back up your comments.

CAPRICORN (December 22 to January 19) A romantic situation takes an unexpected turn that favors some Sea Goats but causes others to reassess how they've been handling the relationship.

AQUARIUS (January 20 to February 18) A surprise turn of events could unsettle the Water Bearer. But it might also help to open up an entirely different way of working out an important matter.

PISCES (February 19 to March 20) A smoothly running operation could bump up against an obstacle. This is where your ability to assess situations and make adjustments can restore things to normal.

BORN THIS WEEK: Your kindness is legendary, and so is your strong sense of responsibility. You most likely do well in humanitarian efforts.

(c) 2026 King Features Synd., Inc.



MY FRANCHISE CONNECTIONS

ARE YOU UNHAPPY WITH YOUR JOB? WE CAN HELP YOU FIND THE PERFECT FITNESS/HEALTH FRANCHISE. WE REPRESENT OVER 1000 FRANCHISES IN THE UNITED STATES.

WE COVER MANY DIFFERENT FRANCHISE CATEGORIES LIKE AUTOMOTIVE, BUILDING & STORAGE, CAR WASH, CHILD RELATED, COFFEE SHOPS, FOOD & RESTAURANTS, GREEN & ECO FRIENDLY, HEALTH CARE & BEAUTY SALONS, VENDING MACHINES, SPORTS, TANNING SALONS, TRAVEL, PACKING & MAILING, SENIOR CARE AND MUCH MORE!

BOOK YOUR FREE CONSULTATION ONLINE AT [MYFRANCHISECONNECTIONS.COM](https://myfranchiseconnections.com) OR CALL/TEXT EVELYN AT 208.755.9120

Schedule a free consultation <https://scheduler.zoom.us/evelyn-howe/consulting>

Holidays & Observances This Week

2/1	American Heart Month
2/2	Play Your Ukulele Day
2/3	Dump Your Significant Jerk Week
2/4	Halfway point of winter
2/5	National School Counselling Week
2/6	Pay a Compliment Day
2/7	Send a Card to a Friend Day

THIS WEEK'S CELEBRITY BIRTHDAYS

Lisa Marie Presley	2/1/1968
Christie Brinkley	2/2/1953
Morgan Fairchild	2/3/1950
Alice Cooper	2/4/1948
Barbara Hershey	2/5/1948
Tom Brokaw	2/6/1940
James Spader	2/7/1960

TIDBITS NUGGET OF KNOWLEDGE

When Mexico City tried to cut road congestion in 1989, they instigated a rule saying only cars with even numbered plates could drive on even numbered days, and cars with odd numbered plates could drive on odd numbered days. People ended up buying extra junker cars so they could have one even and one odd numbered plate. Congestion became worse than ever.



1. Which artist had his first No. 1 chart-topper with "Mandy"?
2. Who was the first to release "Got My Mind Set on You"?
3. Name the artist who was born Charles Edwin Hatcher. Hint: "Contact" and "War."
4. Who released "Mad About You" in 1986?
5. Name the song that contains this lyric: "Risin' up, back on the street, Took my time, took my chances, Went the distance."

Answers

1. Barry Manilow, in 1974. Scott English wrote and originally released the song in 1971, calling it "Brandy." Manilow changed the song to "Mandy" so it wouldn't be confused with Looking Glass' "Brandy (You're a Fine Girl)."
2. James Ray, in 1962. George Harrison followed with a cover in 1987 both as a single and on his "Cloud Nine" album.
3. Edwin Starr. "Contact" and "War" were Starr's only No. 1 hits.
4. Belinda Carlisle after she left The Go-Go's.
5. "Eye of the Tiger," by Survivor, in 1982. The song was at the top of the chart for 15 weeks and was used as the theme song for "Rocky III" the same year. It then won a Grammy for Best Rock Performance by Duo or Group with Vocal.

(c) 2026 King Features Syndicate

TIDBITS WORD POWER

Unscramble this word:

PHRASEGORPS

This ordinary sort of insect actually woos a mate with a selection of over 400 different songs and calls.

KNIGHT MOVES

A	Y	S
I		L
L	C	F

Unlock the power of chess to find the eight-letter word of the day. Choose your starting letter carefully, then move around the square in a one by two fashion to get to the next letter.

© 2026 King Features Syndicate



Beautiful. Simple. Affordable.

Post Falls, ID 208.457.8880

TIRED? SNORING? WE CAN HELP!

Treatments for Sleep Apnea & Snoring by Dr. Erin Elliott



Call today for a consult! **208.773.4579**

We bill **MEDICAL** insurance including Medicare | sleepbetternw.com

