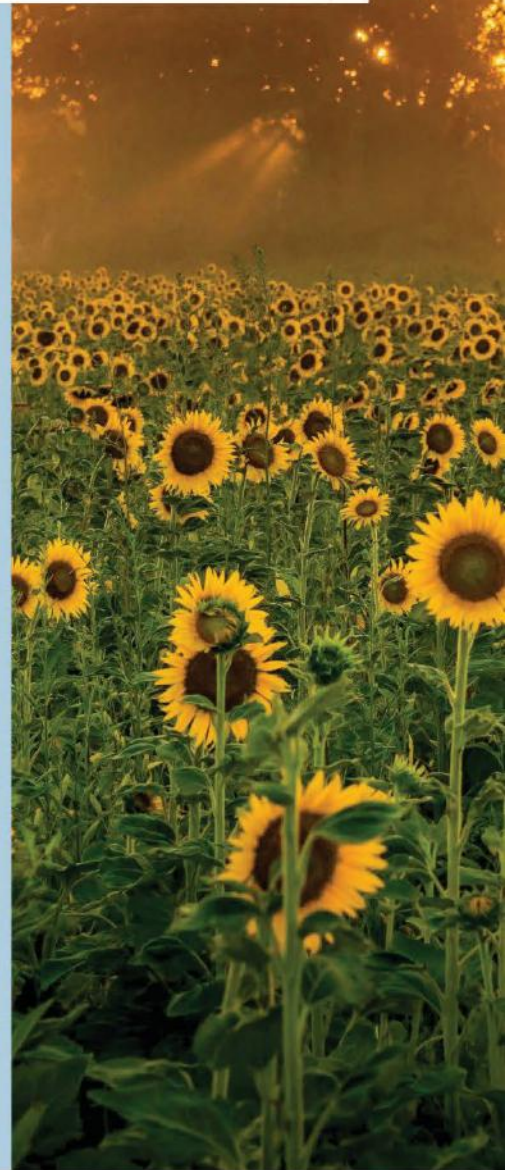
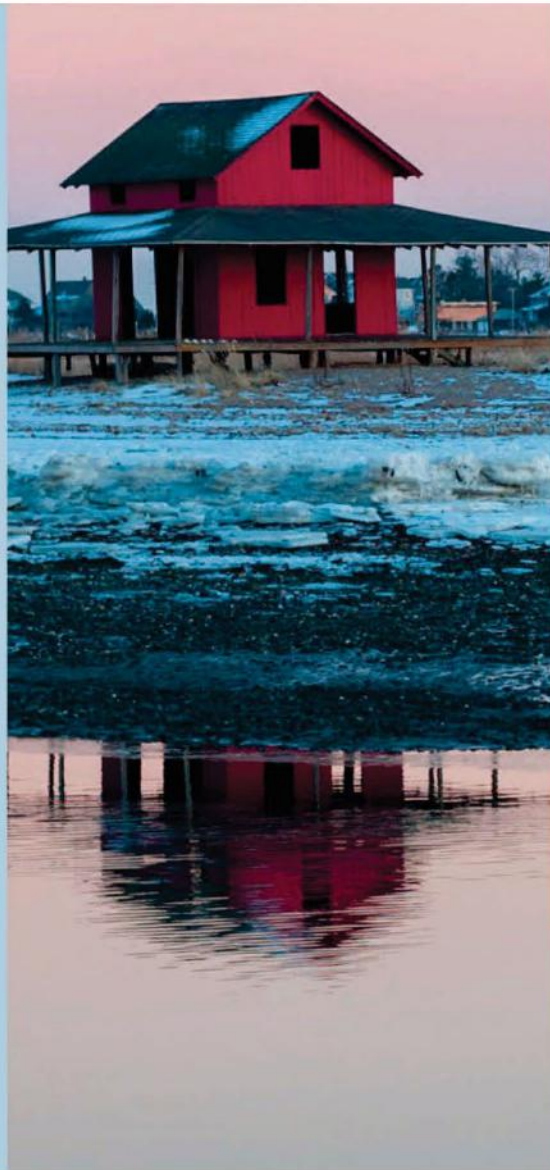
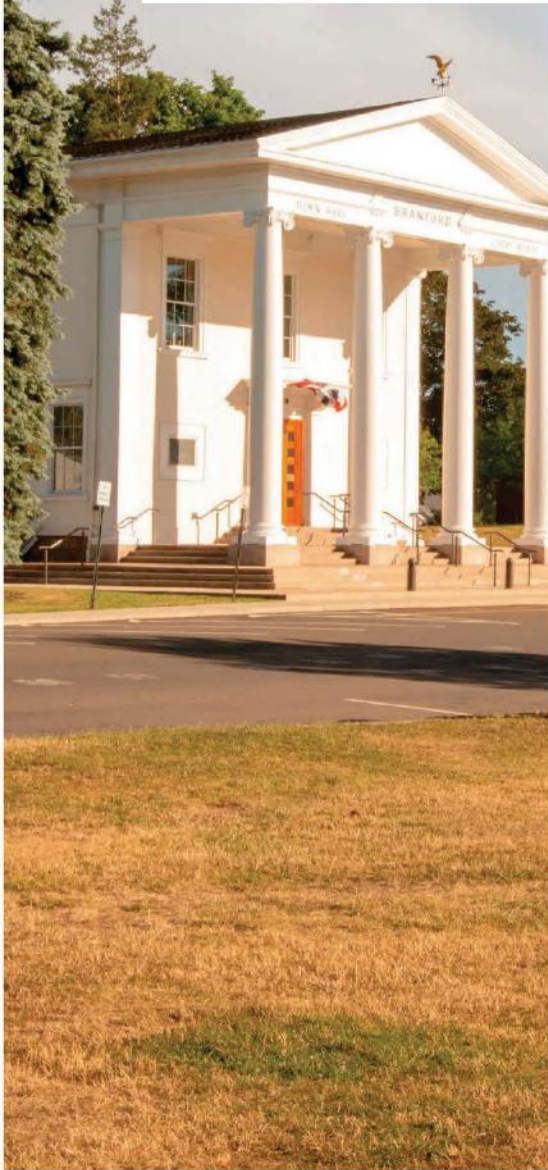


SHORELINE CONNECTIONS

A Magazine About Events, Businesses and
People Along the Shoreline

Branford, Guilford, North Branford



 SHORELINE
CHAMBER

WWW.SHORELINECHAMBERCT.COM

January 2024

SHORELINE CONNECTIONS

Our Towns



SHORELINE CONNECTIONS

In the coming months, the Shoreline Chamber is thrilled to introduce new marketing initiatives aimed at highlighting all that is the shoreline – from its events, its businesses, its history, One noteworthy endeavor is the launch of this online magazine, *Shoreline Connections*. Welcome to its inaugural issue – including a community calendar of events, expert articles, legislative updates, articles about our community, board member interviews, and much more. We hope you enjoy!



Staff: Maribel Lota, Dee Jacob, Mary Grande (not pictured Meggin Jacob).

Table of Contents

Area Map	Page 2
Table of Contents	Page 3
2023 Event Pictures	Page 4
The Importance of a Comprehensive Exit Plan	Page 5
Featured Event 2024 Annual Excellence Awards	Page 9
Community Calendar of Events	Page 10
Meet the Chamber’s Board	Page 11
Our Towns	Page 16
Tax Changes for 2024	Page 21
January Legislative Updates.....	Page 24
New Members & Ribbon Cuttings.....	Page 29

www.shorelinechamberct.com





THE IMPORTANCE OF COMPREHENSIVE EXIT PLANNING FOR BUSINESS OWNERS



Entrepreneurs looking to sell their companies often focus solely on corporate exit planning, aiming to maximize the sale value. However, this narrow approach may lead to missed opportunities and potential pitfalls. Selling a business involves more than just getting the best price; it also encompasses factors such as how much money the entrepreneurs and their families will walk away with and addressing concerns like job security for senior managers. Comprehensive exit planning, an advanced-level strategy, addresses these broader issues and is becoming increasingly popular among successful entrepreneurs.

Why Comprehensive Exit Planning Matters

Selling a business is a significant event in an entrepreneur's career, representing the culmination of years of effort and value creation. While some business owners prefer transferring ownership to family members, situations may arise where selling to outsiders makes more sense, such as when no family member is capable or motivated to continue the business, health issues hinder family members' involvement, or an exceptional selling opportunity arises. Comprehensive exit planning expands beyond corporate exit planning by integrating personal wealth maximization and family wealth protection. The central focus shifts to optimizing family wealth, making it essential to identify goals, objectives, and expectations for both the owner and family members. Collaborating with a financial professional during a discovery process can be invaluable in this stage.

Elite Wealth Planning

Elite wealth planning focuses on personal wealth and combines technical expertise, legal strategies, financial products, and the human element, considering everyone and everything important to the owner. Entrepreneurs engaging in elite wealth planning typically seek to:

1. Structure company ownership to minimize taxes: Elite wealth planning explores strategies to reduce or eliminate taxes on the sale of the company, tailored to the owner's specific circumstances.
2. Protect assets from lawsuits: Many entrepreneurs overlook protecting their personal wealth from unfounded lawsuits, which becomes crucial when transitioning a family-run business into liquid wealth.

CONTINUED

Corporate Exit Planning

Corporate exit planning is a strategic approach to selling a business that aims to maximize its value. This process should commence well in advance of the sale, potentially taking months or even years to ensure all elements are in place to achieve the highest sale value. Key steps in corporate exit planning include:

- **Valuing the company:** Determining the company's worth through a combination of science and art.
- **Identifying drivers of business value:** Recognizing aspects attractive to potential buyers, which are crucial in marketing and negotiations.
- **Leveraging value enhancement opportunities:** Taking actions to increase the company's valuation, from addressing management issues to securing customers and eliminating personal expenses.
- **Analyzing exit options:** Evaluating potential buyers, including family, senior management, competitors, and private equity firms, to weigh their implications.
- **Strategic timing for selling:** Considering macroeconomic factors, business cycles, and personal circumstances to identify the optimal time to sell.
- **Effective marketing:** Utilizing marketing strategies to attract a larger pool of interested buyers and create a competitive environment.

Post-Sale Considerations

After the sale, significant changes occur in the entrepreneur's personal life and financial situation. Elite wealth planning becomes essential once again, potentially involving an estate plan upgrade and asset protection plan restructuring. Managing the substantial liquid assets generated from the sale requires expertise, and it's crucial to identify high-caliber professionals to align investments with goals and objectives.

Other important post-sale issues include an increased focus on philanthropy as families may have more time and resources to support meaningful causes. This may necessitate charitable planning and the formation of philanthropic vehicles like private foundations and donor-advised funds.

CONTINUED

Taking Action

A comprehensive exit plan serves four critical purposes:

1. **Focus on personal goals and objectives.**
2. **Maximize the sale price based on predefined parameters.**
3. **Maximize after-tax proceeds while considering the overarching agenda.**
4. **Position the owner to manage and protect their wealth effectively after the sale.**

Business owners with a comprehensive exit plan in place are well-positioned for success. Those without such a plan should seek guidance from financial professionals to address concerns related to selling their company or preparing for a future sale. Advanced planning can prove valuable when the time comes to exit the business.

Important Disclosures:

This information is not intended to be a substitute for specific individualized tax or legal advice. We suggest that you discuss your specific situation with a qualified tax or legal advisor.

www.impactyourgoals.com

INTERESTING FACTS ABOUT CHAMBERS OF COMMERCE

The first Chamber of Commerce was started in Marseilles, France in 1599 as businesses joined together to promote the each other and their business community.

The Chamber of Commerce of New York is the oldest chamber of commerce in the United States, established in 1768 during the British Colonial Period. Its Charter was signed by King George III.

The Shoreline Chamber formed from an alliance in 2012 between the Branford and Guilford Chambers of Commerce. In 2016, the Town of North Branford was instrumental in the Shoreline Chamber expanding to include North Branford

BUSINESS OWNERS,
Join us for our
BUSINESS STRATEGY
Educational Series



**March 2024
BUSINESS STRATEGY
EDUCATIONAL SERIES**

Guilford Library
3/5, 3/12, 3/19

RSVP AT:
WWW.SHORELINECHAMBERCT.COM/EVENTS/

Join us for 1 day or all 3 days



5 March
6pm to 8pm
Guilford
Library

**Understanding your Business Value,
the EPI 5-stages**

- Identify
- Protect
- Build
- Harvest
- Manage

12 March
6pm to 8pm
Guilford
Library

**The Four Intangible
Capitals that hold 80%
of a businesses value**

- Human Capital
- Customer Capital
- Structural Capital
- Social Capital



19 March
9am to 11am
Guilford
Library

**Exit Strategy as a Business Strategy:
A collection of case studies**

- OldCo/NewCo Business Transition
- Selling to a Third Party
- Partial Acquisition by a Competitor
- Transitioning a Family Business to the next generation.
- Key Members of an Owners Exit Planning Team

**RSVP FOR
1 OR ALL 3 DAYS**

RSVP AT:
WWW.SHORELINECHAMBERCT.COM/EVENTS

Eric Lawton, CEPA®
President, Impact Financial
eric@impactyourgoals.com
Tel. 203 884 0120

Learn more
Impactyourgoals.com

2024 Annual Excellence Awards & Breakfast

February 22nd

7:30 AM - 9:30 AM

at the Woodwinds in Branford

Join us for the celebration of our members' successes in multiple categories and the installation of our new slate of Board Directors!

Featuring Keynote Speaker Cindi Bigelow, CEO of Bigelow Tea

Excellence Award Honorees

New Business of the Year
**Centrality Physical Therapy
& Wellness**

Employer of the Year
East River Energy

Small Business of the Year
Arthur Murray

Nonprofit of the Year
Legacy Theatre

Excellence in Innovation
Spark Cycleworks

Community Partner Branford
Parthenon Diner

Community Partner Guilford
The Guilford Foundation

Community Partner North Branford
POCO Festival & Volunteers

[Tickets and more info here!](#)

Thank you to our sponsors



COMMUNITY EVENTS CALENDAR

JAN 27, SATURDAY	Dance for a Cause Together Supporting Cancer Survivorship	9:30AM - 11:30AM	Nuzzo's Farm, Branford	details
JAN 27, SATURDAY	CT Winter Wine Trail	11:00AM - 5:00PM	Bishop's Orchards, Guilford	details
JAN 30, TUESDAY	Adapt Divorce Workshop	6:00 PM	Online via Zoom	details
JAN 30, TUESDAY	Unlock Weight Loss and Feel Vibrant Again	7:00PM - 8:00PM	Online via Zoom	details
JAN 31, WEDNESDAY	SCORE Webinar: Marketing Fundamentals	5:00PM - 6:30PM	Online via Zoom	details
FEB 1, THURSDAY	Workshop - Conversation Hearth Wreath	6:00PM - 8:00PM	Gracious Gifts and Home, Branford	details
FEB 1, THURSDAY	Celebrating Cultural Diversity	7:00PM - 9:00PM	Guilford High School	details
FEB 3, SATURDAY	CT Winter Wine Trail	11:00AM - 5:00PM	Bishop's Orchards, Guilford	details
FEB 6, TUESDAY	Build Your Financial Confidence - Budgeting Seminar	8:15AM - 9:15AM	Branford Coworking, Branford	details
FEB 7, WEDNESDAY	Candle Making Class	6:00PM - 8:00PM	Grey Goat Farmtique, Branford	details
FEB 8, THURSDAY	Candle Pouring Workshop	6:00PM - 8:00PM	Gracious Gifts and Home, Branford	details
FEB 8, THURSDAY	SCORE Webinar: Plan Your Website for Online Success	5:30PM - 7:00PM	Online via Zoom	details
FEB 8, THURSDAY	Car Buying 101 Workshop	6:00PM - 8:00PM	Women & Family Life Center, Guilford	details
FEB 8, THURSDAY	Susan Roberts Jewelry Sip-N- Shop	6:00PM - 8:00PM	Grey Goat Farmtique, Branford	details
FEB 9, FRIDAY	GHS Concert to benefit Meals on Wheels	7:00PM - 9:00PM	Guilford High School	details
FEB 10, SATURDAY	CT Winter Wine Trail	11:00AM - 5:00PM	Bishop's Orchards, Guilford	details
FEB 12, MONDAY	Life After Loss Bereavement Group	10:00AM - 11:30 AM	Women & Family Life Center, Guilford	details
FEB 13, TUESDAY	SCORE Webinar: Demystifying the World of Email Marketing	5:30PM - 7:00PM	Online via Zoom	details

COMMUNITY EVENTS CALENDAR

FEB 13, TUESDAY	Restart Divorce Support Group	6:00PM - 7:30PM	Women & Family Life Center, Guilford	details
FEB 14, WEDNESDAY	Love Letters	6:00PM - 7:30PM	The Legacy Theatre, Branford	details
FEB 14, WEDNESDAY	Broadway's L Morgan Lee with John McDaniel at the Piano!	2:00PM - 3:15PM	The Legacy Theatre, Branford	details
FEB 17, SATURDAY	CT Winter Wine Trail	11:00AM - 5:00PM	Bishop's Orchards, Guilford	details
FEB 19, MONDAY	Life After Loss Bereavement Group	10:00AM - 11:30 AM	Women & Family Life Center, Guilford	details
FEB 22, THURSDAY	Workshop - Make Your Own Body Butter	6:00PM - 8:00PM	Gracious Gifts and Home, Branford	details
FEB 22, THURSDAY	Annual Excellence Awards & Breakfast	7:30AM - 9:30AM	The Woodwinds, Branford	details
FEB 24, SATURDAY	CT Winter Wine Trail	11:00AM - 5:00PM	Bishop's Orchards, Guilford	details
FEB 25, SUNDAY	Mystic Aquarium's "Freezin' For a Reason" Arctic Splash	11:00AM - 1:00PM	Esker Point Beach, Groton	details
FEB 26, MONDAY	Strategies for Managing Life Transitions	1:00PM - 2:30PM	Women & Family Life Center, Guilford	details
FEB 26, MONDAY	Life After Loss Bereavement Group	10:00AM - 11:30AM	Women & Family Life Center, Guilford	details
FEB 29, THURSDAY	Workshop - Create a Succulent Terrarium	10:00AM - 11:30AM	Gracious Gifts and Home, Branford	details
MAR 5, 12, 19, TUESDAYS	Business Strategy Educational Series	6:00PM - 8:00PM	Guilford Free Library	details
MAR 26, TUESDAY	Non-Profit Conference	9:30AM - 1:30PM	The Woodwinds, Branford	details

[Click here for full list of events.](#)



BOARD MEMBER SPOTLIGHT

JIM ROCHFORD

Jim is finishing his 7th year as a Shoreline Chamber of Commerce board member.



Where are you originally from?

I'm from Long Island. We moved to the CT Shoreline in 1986.

Where do you live on the shoreline?

We've been in Guilford since 1986. Years ago I worked for a corporation in NYC and then moved to one of their divisions based in Cheshire. We had our first child and then found a home in Guilford. It's a great place to raise a family. As a matter of fact, the reason I'm in business coaching is we didn't want to leave Guilford because we didn't want to relocate our family.

What is your occupation?

I've been in business for myself since 2004. The name of my company is RochfordCOACH, a business coaching firm. Business coaching is really helping a business owner or a top exec of a business improve business results. We touch on many different areas - it can be working with clients on strategy, operations, helping with marketing and sales, and helping with organizational issues, including hiring, development, and sometimes firing. Prior to going into business coaching, I managed business divisions for a manufacturing company. I had fingers in all parts of the business and P&L responsibility.

For any specific professional services, whether it be legal or accounting, IT, advertising services, etc, I have a network that I've met through the years. For example, if somebody needed a website, branding, generating a social media campaign, I have a good network of people. The benefits of being in the chamber is meeting people in other businesses. Referrals are a big thing and I also host a lot of seminars through the chamber. Networking is key. When I went into business coaching, the first thing I was told was to join the chamber and get involved in the chamber, not just be a wallflower, be involved, active and be a leader. I took that advice to heart.

What was your earliest involvement in the Chamber and why?

I joined the Guilford and Branford Chambers in 2004 and got involved with both before they merged. When I started RochfordCOACH, I had to build a network of people who were local and I didn't know anybody. I joke that my wife knew everyone at the supermarket through the kids and now I'm the one that knows everyone. It was a way to get involved, meet people and to get to know and learn the ways of small business. I was schooled as an employee of the corporate world. What makes a small business successful is pretty much the same. However, the scale of the businesses, the people and how you market them is different.

How many years have you served on the board?

After previously serving as a board member on the Branford chamber, including as chair, I am completing my second term on the Shoreline Chamber board. Most recently I have served as Vice Chair of the board and chair of the public affairs committee.

Why did you step into this role?

A couple of reasons. One is I'm the kind of person that likes to be involved and the other is it was intentional to become known and seen as a leader. It fits my personality.

Fun fact about you?

Most people would not know that I'm a music freak. I own over 10,000 recordings. I'm a natural music appreciator. I like all kinds of music, particularly anything that comes from the wellspring of American music (rhythm and blues, etc.).

Favorite spot on the shoreline?

Being a concert goer, I love "The Kate." I love Jacob's beach in Guilford - we spend a lot of time there. I also like any activity on the Branford or Guilford Green.



Are stocks a good choice right now? Give us a call.



Sue Ganci
Financial Advisor
200 Boston Post Road
Suite 1
Madison, CT 06443
203-779-6962



Michael Ganci
AAMS[™], CRPC[™]
Financial Advisor
71 Whitfield Street
Guilford, CT 06437-2610
203-458-2185



MEET A MEMBER

MAYNESTREET WEIGHT LOSS & WELLNESS

Maynestreet, owned by Debbie Harris and David Mayne, is a 30-day natural method for balancing your body for weight loss and improved health. The Maynestreet philosophy is that Hormone balancing is not based on burning calories or traditional diet & exercise. They believe this method, combined with healthy eating, redefines the body's food storage management. Achieving balance prompts the natural release of stored fat and resets the body, facilitating the elimination of excess food as bodily waste. **Gold Member since 2023**

"I love that this is a weight loss program but not a DIET. We get to explore the edges and eat according to who we are, not as defined by some cookie cutter plan."



116 Main Street, Deep River
www.maynestreet.com

MEET A MEMBER

SMITHLAND PET AND GARDEN CENTER

For over three decades, the Smithland and myAGWAY brands have stood as robust Lawn, Garden, & Pet Centers, firmly rooted in New England. Offering competitive pricing, expert in-store advice and a location conveniently located right off Route 80, they have become a trusted supplier for lawn, garden and pet products through every season. The spacious indoor area features an expansive pet section stocked with pet food and supplies. Additionally, there is a dedicated section for garden supplies and decor. The outdoor space offers an extensive selection of seasonal perennials and annuals, along with a greenhouse. **Gold Member since 2016**

"Seeds, plants, gardening tools, bird feeders and plant and animal food. So many great things all in one place. And the staff are extremely helpful and knowledgeable."



11 Whitewood Lane, North Branford
www.mysmithland.com

CanciónTM

TEQUILA

Co-Owned by Branford Residents

100% Agave Azul Ultra-premium Tequila



Where to Find Us

Branford

Coastal Wine & Spirits
Branford Wine & Liquor
Harbor Package Store
Indian Neck Liquor Store
Gabel's Package Store
Grey Goat Farmtique
Arturo's Restaurant
Doma On Main
Lenny's
Rosso Vino
Los Charros

Guilford

Frank's Package Store
Sunrise Liquor
Shoreline Wine Merchants
Quattro's
Guilford Mooring

www.canciontequila.com

THE BEGINNING – BY MAIRI BRYAN

The Connecticut Shoreline Community is rich in history and geography, from the original Native American inhabitants, including the Pequot, and the Mattabesec tribes, as well as to the first Dutch and English settlers. It is a region abundant in natural resources, with fishing and agriculture being the predominant attractions for the original settlements. The abundance of coastal access and river navigation made the shoreline an attractive region for settlers and was key to their success.

Guilford and Branford, incorporating what is now known as North Branford and Northford were originally part of the New Haven Colony, although all had their own distinctive characteristics. They were populated by intrepid and inventive pioneers who were looking for a better and more productive life in the New World.

Guilford – A Farming Community

A group of Puritans led by the Reverend Henry Whitfield left England in May of 1639 bound for the new world and religious freedom. Around forty of his friends and sympathizers formed a joint stock company of young, well-educated farmers from Ockley, near London, to invest in a new life. They set sail for New Haven, and the colony that was established there. After their arrival, a deed of sale was transacted on September 29, 1639 between the new “Whitfield Company” and the local Native Americans to “purchase” the land between Stony Creek and the East River. The local Native Americans were represented by the female Sachem Shaumpishih, and the settlers, led by Henry Whitfield, purchased land and established the plantation of Menuncatuck. This would later be known as Guilford, after the town in England from whence they had come.

Like most towns established in New England in the 1600’s, Guilford was organized around a common or Green, with the first houses being very rudimentary, except those of the leaders of the colony, which were built of stone, and used as shelter in times of danger or attack. In the fall of 1641, the settlers purchased land beyond the East River, which is now Madison, and the two tidal rivers and the harbors that provided assured access to coastal shipping and trade in the 1700’s.

Guilford even has a Regicide Cellar where the infamous William Goffe and Edward Whalley were hidden in the 1660’s and is mentioned in the recent Robert Harris historical novel “Act of Oblivion”.



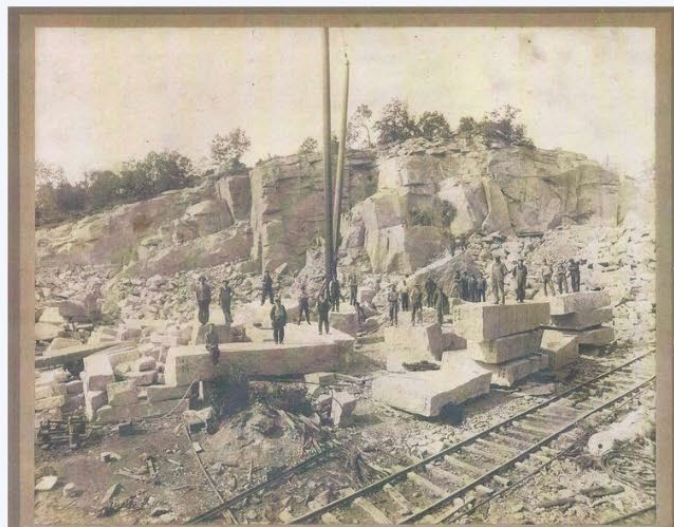
CONTINUED

Branford – A Colonial Port

The Town of Branford was originally part of the New Haven colony and was settled in 1644 by a group of English settlers chosen by the leaders of the colony. In 1638, the New Haven Colony traded “eleven coats of trucking cloth and one coat of English cloth made in the English fashion” to the Mattabesec Indians for land then known as Totokett, meaning “tidal river”. The town was named Branford after the town of Brentford in England. The geographic location on the Branford River was key to the colony’s success, as this provided the only deep harbor between New Haven and New London. The flood plain provided productive cropland as well as land to develop and build the settlement. The proximity of Long Island Sound provided the settlers with shipbuilding and other coastal trade, and industry began in 1655 with the setup of the first iron furnace in Connecticut.

What is now the Branford Center Historic District is bounded by Route 1, the Branford River and Monroe and Kirkham Streets and was the focus of the early community. Branford developed in the 1700’s into a farming and maritime village, later developing into a coastal town with a mixed economy. While the beginnings were very much a coastal farming community, the discovery in the 1800’s of the distinctive pink granite in Stony Creek led to a quarrying industry which attracted workers from many miles away. The railroad’s arrival in 1852 had a considerable impact on the industry by improving transportation access and so the accessibility of labor. Two leading manufacturing companies were founded during this time, the Malleable Iron Fittings Company in 1854, and the Branford Lock Works in 1862.

The Stony Creek quarries, including the Stony Creek Red Granite Company, and Guilford’s Beattie Quarry, has provided exceptional quality granite for projects throughout the United States. Some of these projects include the pedestal of the Statue of Liberty, the foundation of the Brooklyn Bridge and Stony Creek granite can also be found at the Grand Central Station Post Office.



CONTINUED

North Branford – Northford – An Industrial Village

The region of North Branford was opened for settlement in the 1690's as the "Third Division" of the Town of Branford, and in 1725 and 1745 the Second and Third Society were incorporated later known as Northford. The settlement was originally part of the New Haven colony in the 1600's and was settled as part of Branford. When North Branford was incorporated in 1831, Northford became a part of North Branford. Both North Branford and Northford as more rural outposts of Branford, became an important local farming community, as well as developing into an early milling and industrial community.

In the 1700's the village's thriving farms and mills produced grains and silk, with the village later becoming a local industrial hub due to the prominent Maltby and Fowler families. These original families transformed the village into a small industrial center in the 1800's by first making buttons and later by the manufacturing of pins and screws. They devised machinery to produce these necessities, as well as horseshoe nails, thus developing new manufacturing along the Farm River.



MEET A MEMBER

GRACIOUS GIFTS AND HOME

Gracious Gifts and Home was born with the idea of procuring unique gifts and home goods and to provide a space for local artisans to showcase their creative items. They've incorporated a special outreach to "exceptional artists", from original artwork, pottery, aromatherapy products, candles, shell art, and more. They strive to carry quality, imaginative items in all mediums, created by adults of all abilities. Additionally, 60% or more of our inventory is purchased from CT and the USA in an effort to support small business growth. A portion of all profits are donated to local organizations that support young adults with Autism or intellectual disabilities. **Silver Member since 2021**

"Gracious Gifts And Home is SO CUTE! They carry an assortment of items that can be gifts for literally anyone in the family! Such a cute shop -- a MUST to stop by if in the area of Branford!"

116 Montowese St, Branford
www.graciousgiftsandhome.com



MEET A MEMBER

BLAZE PICKLE

Pickleball has gained major popularity as a recreational activity and is played both indoors and outdoors. Fortunately for shoreline residents, there's a conveniently situated Pickleball facility right here in Guilford at the old Walmart location. Blaze Pickle offers an extensive list of programs, convenient hours, flat-rate pricing, lessons and so much more! They are also open 7 days a week. Their membership offering includes reduced pricing for all court fees, access to private party bookings and events, members-only events and 10% off all gear at their pro shop. Pickleball is a low-impact activity that is easy to learn, offers multiple cardiovascular benefits, is fun, and is accessible to all ages! **Silver Member since 2023**

"Started off with coached open play. And now every chance I get I book for regular open play. Playing against All sorts of skill levels, it can get fun and competitive pretty quick!"

900 Boston Post Road, Guilford
www.blazepickle.com





UNLOCK YOUR **BRAND'S** POTENTIAL

American Solutions for Business partners with you to develop marketing solutions tailored to your goals.

Understanding your unique needs, we leverage our expertise and nationwide network to tailor solutions that fuel your success. Our focus is simple: measurable results that turn your vision into reality.

Contact us today for a free consultation.

Jim Fennell
 jfennell@americanbus.com
 (203) 871-1150



eCommerce Solutions



Print & Document Solutions



Promotional Products



Kitting & Fulfillment Solutions



Fixtures & Displays



Direct Mail



Office Supplies



Marketing Solutions



Reporting Solutions



TAX CHANGES FOR STATE AND FEDERAL TAX FILINGS BY JONATHAN GRANDE, CPA



When it comes to income taxes -- and particularly CT income taxes -- it suffices to say that there are many changes that could affect your current and future tax-year filings-- too many to cover in a brief article. One constant is the filing deadline for 2023 Federal and State Income taxes - Monday, April 15, 2024.

Besides the annual adjustments that take place as a result of the tax brackets being indexed for inflation, retirement account contributions limits for 2024 have also increased.

For retirement, there are key provisions in the SECURE 2.0 Act of 2022 (Setting Every Community Up for Retirement Enhancement), that take effect this year. The Act contains 92 new provisions to promote savings, boost incentives for businesses, and offer more flexibility to those saving for retirement. Provisions include automatic 401(k) enrollment, an increase in the age for taking RMDs, significant tax benefits for employers, and much more that we'll cover in a future article.

Among the Federal changes affecting individuals are:

- Penalty-free early withdrawal of up to \$1,000 for individuals under age 59 ½ from IRAs and 401(k)s that can be taken without paying the 10% additional tax (up to \$10,000 for domestic abuse victims)
- Funds in a 529 education accounts can be rolled over tax-free to a Roth IRA. There is a \$35,000 lifetime cap and the rollover amounts can't exceed the annual contribution limit for Roth IRAs.
- Roth 401(k) accounts are no longer subject to RMDs (Required Minimum Distributions) making them consistent with Roth IRAs.
- Qualified Charitable Distribution cap is indexed for inflation to \$105,000 for 2024

Eligible buyers of qualifying Electric Vehicles (EVs) can now take more immediate advantage of the Federal Tax Credit (up to \$7,500) starting in 2024. Rather than paying the dealer and waiting until you file your taxes next year to take advantage of the credit, you can elect to transfer the credit to the dealer at the time of purchase thus lowering the amount you are paying for the vehicle. This applies to both purchase and leasing options.

The changes that will impact more CT residents most directly are the State of CT tax law changes which include tax rate reductions as well as an expansion of the phase out of the taxable retirement income limits.

The income tax cuts which went into effect on January 1, 2024 will see a decrease in the two lowest tax brackets:

CONTINUED

- The 3% rate on the first \$10,000 earned by single filers and the first \$20,000 by joint filers will drop to 2%.
- The 5% rate on the next \$40,000 earned by single filers and the next \$80,000 by joint filers will drop to 4.5%.

For a single filer with an Adjustable Gross Income (AGI) of \$50,000, this translates into a \$300 savings. Joint filers with an AGI of \$100,000 would likewise see a \$600 reduction. The relief is capped at \$150,000 for single filers and \$300,000 for joint filers.

Connecticut also expanded the limits for deducting IRA distributions and pension and annuity earnings for seniors. Effective in 2024, the “fiscal cliff” for this deduction is eliminated by adding a phase-out starting for single filers with an AGI above \$75,000 and for joint filers starting at \$100,000.

Perhaps most importantly from a tax planning standpoint, the reduction in the Federal Tax Rates for individuals and families that were implemented by the Tax Cut and Jobs Act of 2017 (TCJA) during the Trump Administration will expire on December 31, 2025 unless Congress acts to extend them.

The table below shows the Current Tax Rates as related to the 2023 Taxable Income Brackets (for Single and Married Joint Filers for illustrative purposes) and the Previous Tax Rates that could apply after 2025 for each bracket if the TCJA reductions are not extended.

Income Bracket/Marginal Tax Rates							
Single	\$0 to \$11,000	\$11,001 to \$44,725	\$44,726 to \$95,375	\$95,376 to \$182,100	\$182,101 to \$231,250	\$231,251 to \$578,125	\$578,126 or more
Married Filing Jointly	\$0 to \$22,000	\$22,001 to \$89,450	\$89,451 to \$190,750	\$190,751 to \$364,200	\$364,201 to \$462,500	\$462,501 to \$693,750	\$693,751 or more
Current	10%	12%	22%	24%	32%	35%	37%
Previous	10%	15%	25%	28%	33%	35%	39.6%
Change	0%	3%	3%	4%	1%	0%	2.6%

It’s worth noting that the change would impact lower and middle income individuals and families as well as those with very high incomes the most. The corporate tax rate reduction to 21% has no such expiration.

For these taxpayers, CT State Income Tax liability may be eliminated if your only sources of income are a pension and/or social security. If you’re concerned about the risk and want to minimize your future federal tax liabilities, it may be beneficial to discuss your situation and potential strategies to hedge or eliminate the risk with your tax advisor or retirement specialist.

EARLY BEGINNINGS MAKE A DIFFERENCE!

VISIT US TO LEARN MORE ABOUT OUR DYNAMIC PRE-K3 TO GR. 8
STREAM PROGRAM AND PROJECT BASED LEARNING.

OUR SCHOOL FAMILY CAN'T WAIT TO MEET YOUR FAMILY!



OPEN
HOUSE



FEB
4

Noon to 2 p.m.

CONTACT OUR ADMISSIONS OFFICE:
ADMISSIONS@EASTSHORELINECATHOLICACADEMY.ORG

(203) 488-8653 | EASTSHORELINECATHOLICACADEMY.ORG
62 CEDAR ST., BRANFORD

If you have children in grades pre-K 3 to Gr. 8 or have a friend or family member who does, please share our open house information with them. Visit us at 62 Cedar Street on February 4th from noon - 2 p.m. to learn more about our Project Based Learning STREAM framework and how early beginnings make a difference! Our school family can't wait to meet your family! Snow date: Feb 25, Noon - 2 p.m.

East Shoreline Catholic Academy (ESCA) is a dynamic Pre-K-8 STREAM school, preparing individual students to be our future leaders rooted in faith, service, and academic excellence.

To learn more about ESCA, visit our website: <https://eastshorelinecatholicacademy.org>

State Representative Vincent Candelora

86th Assembly District

North Branford | Durham | East Haven | Guilford

Contact Rep. Candelora:

vincent.candelora@housegop.ct.gov or by phone

at 860-240-8700



First and foremost, it's imperative that we maintain the strict fiscal controls that were first implemented in 2017 as a result of bipartisan budget negotiations, and then renewed last winter for another five-year period. These fiscal guardrails include a "volatility cap" that requires that excess revenue from unstable revenue streams be sent to the budget reserve fund and then to pensions, and also a "revenue cap" that controls state spending to create a surplus. These guardrails have been significant contributors to getting our state's finances back in the black while also paying down debt, and we must resist calls to relax these beneficial constraints from those who want to free up money for more government spending. It's a goal Governor Lamont and I share. Ultimately, I hope a strong majority of lawmakers see it the same way.

Beyond fiscal matters, including trying to create more tax relief for residents, I contend the legislature must finally tackle the juvenile crime crisis—and crime in general—in a more impactful way. Given shocking instances of absentee ballot fraud in Bridgeport, it's clear that robust conversation and action about election integrity measures is needed. Recent headline-grabbing issues regarding children under the umbrella of DCF care are on my radar screen, too, and I intend to push my colleagues to consider whether policy changes are needed. Finally, as someone with a hand in running a family-owned businesses, an enduring priority is to call attention to and blunt proposals that make life more difficult for the business community—the very people we need to drive our state's economic recovery.

Feel free to contact my office any time if you have questions, ideas or concerns about these issues or any other topic related to state government: 860-240-8700 or vincent.candelora@housegop.ct.gov

CONTINUED

JANUARY LEGISLATIVE UPDATE

State Senator Christine Cohen

Representing Branford, Durham, East Haven, Guilford, Killingworth, Madison, Middlefield, North Branford & Rockfall

Cohen@SenateDems.CT.gov or at 860-240-0455.



The legislature is poised to take on a number of important topics this session and I look forward to working with my colleagues to make Connecticut better.

Personally, I am looking towards this session eager to maintain our fiscal health, lift the voices of small businesses and address safety on our roadways. Last session we passed a historic \$600M in tax cuts and addressed the pension and annuity cliff for seniors, while keeping our rainy day fund full, paying down our debts and remaining under the spending cap. This session we must continue to maintain our fiscal security while investing in our communities.

As a small business owner myself, I have long been a voice for business owners in the legislature - that's why I fought to relieve businesses from the additional unemployment tax levied on them in the wake of the pandemic. While we are nearly 4 years out from the onset of the COVID-19 pandemic, I know many businesses are still facing residual challenges. As your partner in the legislature, I am committed to investing in career training, supporting our tourism sector and ensuring Connecticut businesses have the tools they need to thrive. That means also ensuring we have fast, reliable, and affordable transportation options. Improved connectivity means easier access to jobs, education, and markets for goods and services. It fosters economic growth by attracting businesses, tourists, and investors, boosting employment opportunities, and enhancing regional development.

As I enter my second term as Senate Chair of the Transportation Committee - I am laser focused on not only enhancing public transportation, but also increasing safety on our roadways. In the last several years, Connecticut has seen a staggering increase in crashes and traffic fatalities. We've been hard at work on wrong-way driving countermeasures, implementing pedestrian and cyclist safety mechanisms and providing tools to municipalities to improve conditions. The number of people being hurt on our roads is unacceptable and I'm eager to work alongside my colleagues to pass common sense solutions that keep all who traverse our state safe.

CONTINUED

Robin Comey
State Representative

102nd Assembly District
Proudly Serving Branford
robin.comey@cga.ct.gov



Which are the priorities the legislature should focus on and why?

It's important that Connecticut focus on workforce. I see this being prioritized in several ways. The first is the approach we are taking to ensure an equitable, high-quality, and sustainable early childhood system. Workforce development is the cornerstone to this industry. This plays out in terms of investments in the teachers and small businesses that make up this system, such as compensation, training and benefits. Building a system that supports a standard of care, affordability and availability is critical to the families in this state that rely on the care economy so they can work and flourish.

Second, non-profits and school systems are struggling in terms of workforce. They both play critical roles in our communities and consistency of care is important for our health and well-being. We have heard the difficulties with hiring and retaining staff. This is due to the ability to offer competitive salaries, so funding is an important part of that. Additionally, we have to improve Connecticut's approach to licensing professionals moving from other states. Let's focus on removing red-tape and cost barriers for more seamless integration and multi-state compacts.

INTERESTING FACTS ABOUT CT GOVERNMENT

Connecticut has a bicameral legislature, the Connecticut General Assembly, which consists of the Connecticut House of Representatives and the Connecticut Senate. The House has 151 members representing 151 districts, with members serving a two-year term.

During even-numbered years, the General Assembly is in session from February to May. In odd-numbered years, when the state budget is completed, session lasts from January to June.



CONTINUED

State Representative Moira Rader

98th District

Moira.Rader@cga.ct.gov or
by phone at 860-240-8585.



As we head into the 2024 legislative session here in Connecticut in early February, I wanted to share a few of the many priorities (within the committees I serve) that we are likely to address in the next few months.

In the Environment Committee, we hope to create additional PFAS regulations on the use of these harmful chemicals in consumer products, including textiles. Regarding our statewide need to continue addressing waste management, we will work on legislation to remove more materials from the solid waste stream (i.e. food scraps, additional recyclable containers) and identify ways to better manage waste in-state. The committee will also work towards a comprehensive, impactful bill to address the state's climate goals by way of a climate roadmap.

In the Education Committee, we plan to continue addressing education financing and the major education grant programs, including the Education Cost Sharing (ECS) grant. In this session, the legislature may consider making changes to the programs or other measures to help school districts as they face the end of federal pandemic relief funds and continue to address pandemic-related learning loss and chronic absenteeism among students. We will also be looking at teacher certification and the continued need to address the support and growth of our teacher workforce.

In the Public Health Committee, we continue to look at ways to address the safety of our healthcare workers, particularly those who visit patients in their homes, such as home healthcare workers and visiting nurses. We would also like to explore the expansion of Telehealth options, as the use of this type of healthcare saw wide provider and patient participation and success throughout the pandemic.

MEET A MEMBER

GUILFORD INTERFAITH VOLUNTEERS



The motto of Guilford Interfaith Volunteers is "Neighbor Helping Neighbor." Their mission is to promote the well-being of their residents who are homebound, elderly or have special needs by providing them with food, friendship and functional medical equipment. The primary goal of this great organization is to provide Guilford residents with nutritious food. Additionally, , their goal is to reduce the feeling of isolation and loneliness their clients might be experiencing. They strive to provide services that enable their clients to remain in their homes, postponing the necessity of moving to personal care facilities. Some of the programs they are involved with include Meals on Wheels, Friendly Visiting, Charlie's Closet and Guilford Food Bank. **Non-Profit Member since 2023**



"The motto of Guilford Interfaith Volunteers is 'Neighbor Helping Neighbor.'"

www.givct.org

MEET A MEMBER

SHORELINE VILLAGE CT



Shoreline Village CT was established as a non-profit, member-led community comprised of active, resourceful, and forward-thinking individuals committed to assisting each other in aging in place. The community aims to empower its members with the confidence to handle a wide range of situations, both significant and minor, without relying solely on family or friends. With the combined efforts of paid staff and volunteers, they offer complimentary services such as transportation to medical appointments, running errands, aid with simple home repairs or tasks like taking out the trash, and regular check-in calls. Additionally, they maintain a roster of verified service providers for plumbing, electrical, or carpentry needs.

Non-Profit Member since 2023

"It wasn't until I connected with the newly formed Shoreline Village CT, that felt that I belonged."



www.shorelinevillagect.org

WELCOME to Our New Shoreline Chamber Members

Breakwater Books
81 Whitfield Street
Guilford, CT 06437
(203) 453-4141

Holiday by Atria Senior
Independent Living
80 Cedar Street
Branford, CT 06405
(203) 481-6028

Coastal CT Homes | Real
Broker CT
56 Briarwood Dr
North Branford, CT 06471
(203) 481-4605

Holly A. Bryk
State Marshal
3 Research Drive
Branford, CT 06405
(203) 676-3503

Detailance Auto Salon
80 North Main Street
Branford, CT 06405
(203) 802-7540

Impact Financial Wealth
Management, LLC
99 Whitfield Street
Guilford, CT 06437
(203) 884-0120

Gina Russell Tracy
31 Waterlily Lane
Guilford, CT 06437

JMM Health & Wellness
2470 Boston Post Road
Guilford, CT 06437
(203) 533-7137

WELCOME to Our New Shoreline Chamber Members

M-Lo Speaks
257 Green Hill Road
Killingworth, CT 06419

ProExteriors
90 Hamilton St
New Haven, CT 06511
(203) 823-1979

OES Wealth Partners
71 Bradley Road
Madison, CT 06443
(800) 878-7152

Supreme Seafood
999 Foxon Rd
North Branford, CT
06471
(203) 484-2721

The Daughter Next Door
37B Pearl Street
Guilford, CT 06437
(203) 824-3913

**Please Visit Our Online Directory to Find More Trusted Members
for All Your Needs**

<https://www.shorelinechamberct.com/list/>

THANK YOU



**For your support of
The Shoreline Chamber
The Shoreline Community &
Shoreline Businesses & Nonprofits**