

InertSearch™ for LC

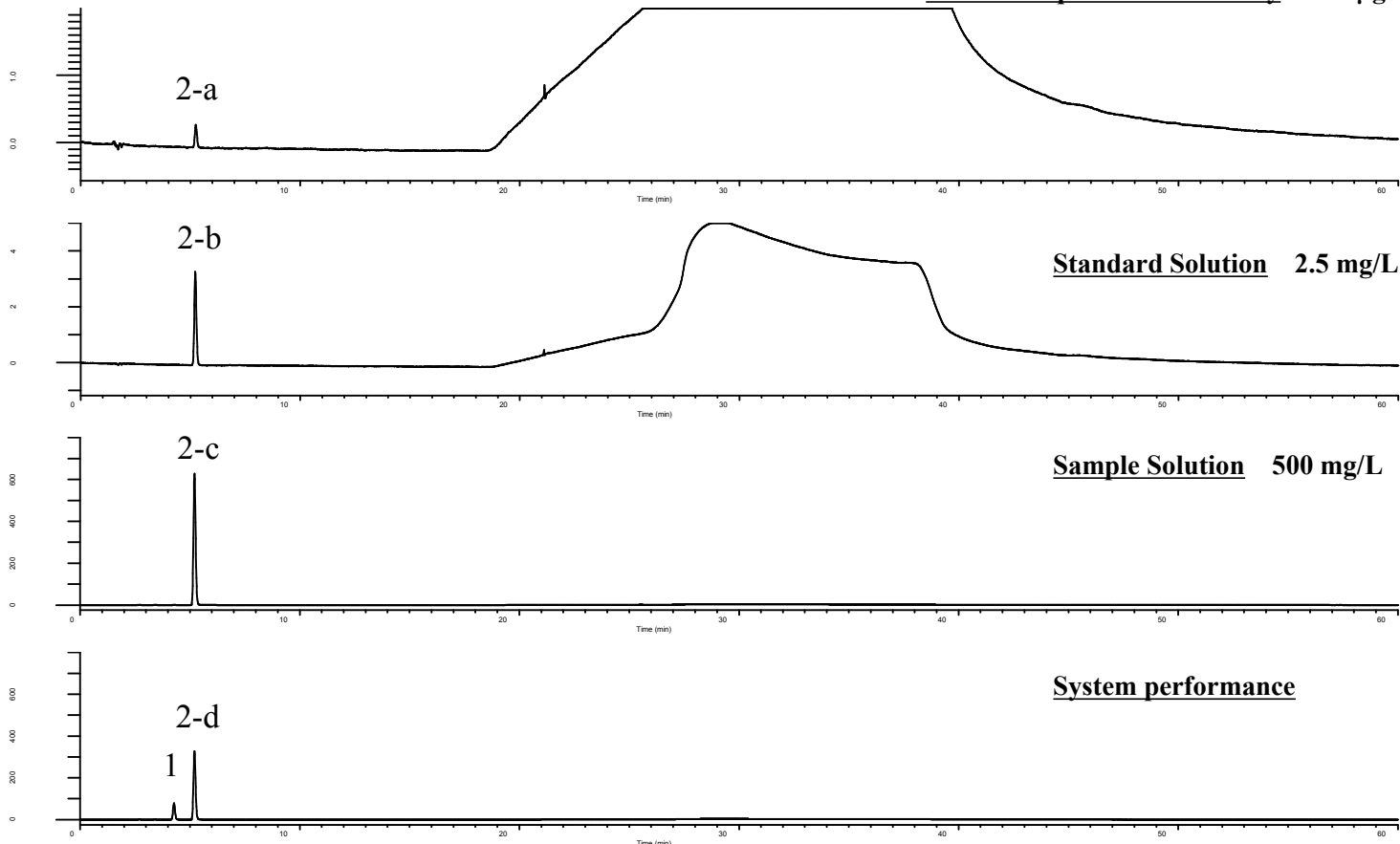
Inertsil® Applications

Analysis of Ribavirin

(Under the Condition of the Japanese Pharmacopoeia)

Data No. LB285-0894

Test for required detectability 250 µg/L



Conditions

System : GL7700 HPLC system

Column : Inertsil ODS-4 HP
(3 µm, 150 x 4.6 mm I.D.)

Column Cat. No. : 5020-14008

Eluent : A) Solution*
B) Solution*/CH₃CN = 19/1, v/v

Analyte:

1. Impurity
2. Ribavirin

Resolution (1, 2-d) : 5.28 (≥ 4.0)

Tailing factor (2-b) : 1.11 (≤ 1.5)

RSD of the peak

area (2-b)(%)(n=6) : 0.26 (≤ 2.0)

Time(min)	A(vol%)	B(vol%)
0.0	100	0
15.0	100	0
25.0	0	100
35.0	0	100
35.1	100	0
60.0	100	0

Flow Rate : 1.0 mL/min

Col. Temp. : 25 °C

Detection : UV 220 nm (PD7752 PDA Detector)

Injection Vol. : 5 µL

Sample : Standard

*Dissolve 2.0 g of sodium sulfate anhydrous in 300 mL of water.

Add 8 mL of phosphoric acid(5%) to this solution.

Add water to make 2,000 mL.