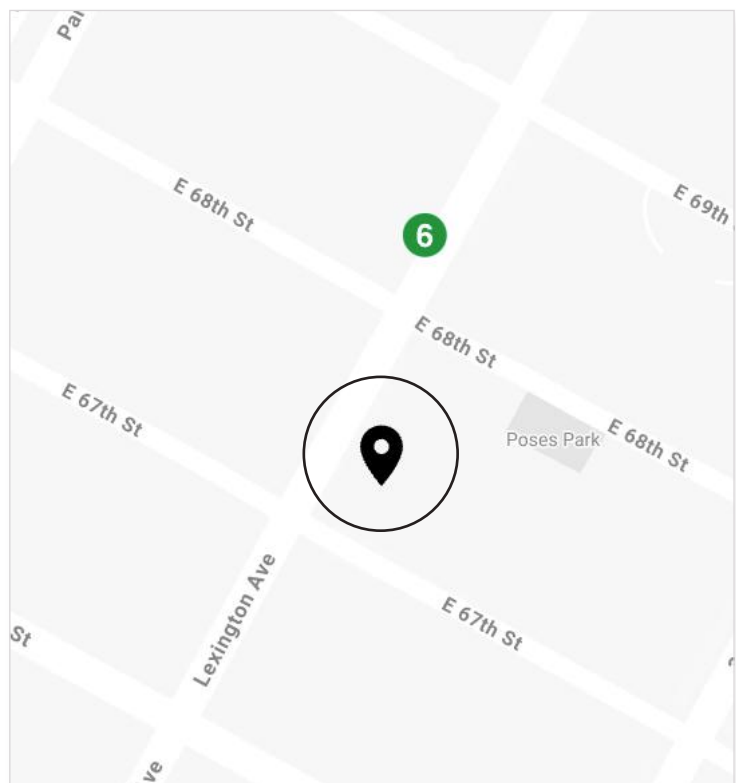


GROUND FLOOR  
**MEDICAL OFFICE**  
FOR LEASE

PRICE	\$12,000
APPROX SIZE	1,765+/- RSF
TERM	NEGOTIABLE
POSSESSION	IMMEDIATE



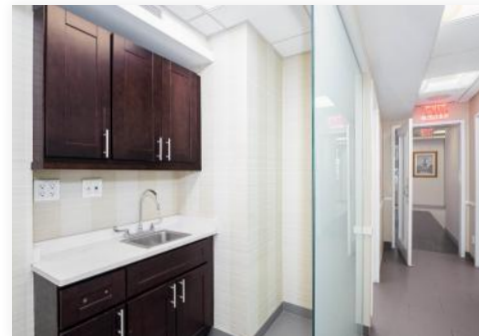
**901-903 LEXINGTON AVE, GF**  
BETWEEN EAST 67 AND EAST 68TH STREETS

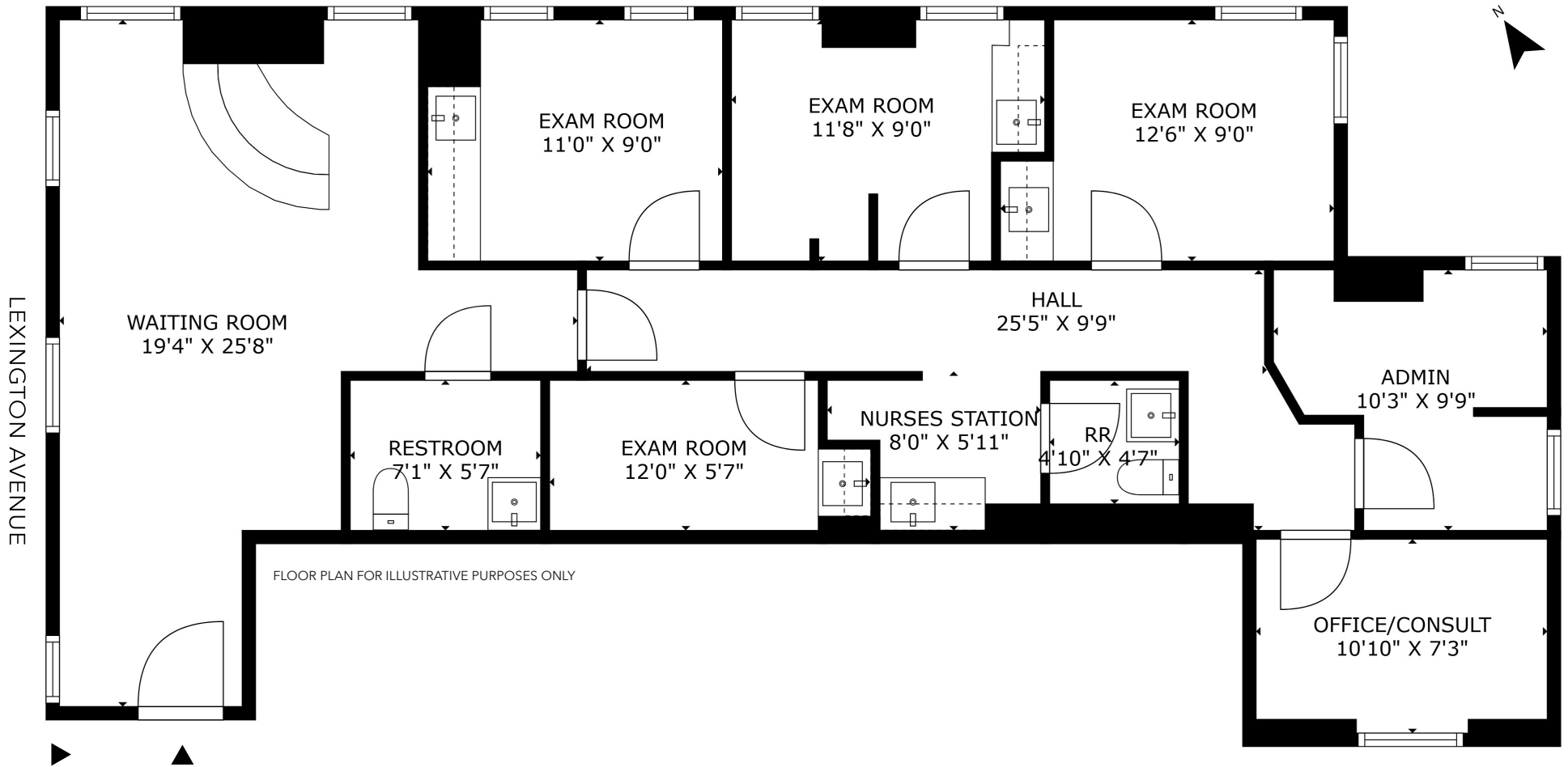
## LAYOUT

- WAITING ROOM
- RECEPTION
- FOUR (4) EXAM ROOMS
- OFFICE/CONSULT
- NURSES STATION
- ADMIN OFFICE
- TWO RESTROOMS

## ADDITIONAL FEATURES

- STREET ENTRANCE ON LEXINGTON AVENUE
- TILE FLOORING
- RECESSED AND OVERHEAD LIGHTING
- CENTRAL AIR CONDITIONING
- ADAPTABLE TO ANY MEDICAL SPECIALTY





### Paul L Wexler

LICENSED ASSOCIATE  
REAL ESTATE BROKER

P: 212.836.1075  
E: PWexler@corcoran.com

### Josef Yadgarov

LICENSED ASSOCIATE  
REAL ESTATE BROKER

P: 212.836.1097  
E: josef.yadgarov@corcoran.com

### Kurt Herold

LICENSED ASSOCIATE  
REAL ESTATE BROKER

P: 212.323.3817  
E: kherold@corcoran.com

### Alisia Ramlochan

LICENSED ASSOCIATE  
REAL ESTATE BROKER

P: 212.893.1450  
E: alisia.ramlochan@corcoran.com

### Cosmin Bitu

LICENSED REAL ESTATE  
SALESPERSON

P: 917.602.5754  
E: cosmin.bitu@corcoran.com