



Eat That Frog

eatthatfrog.ac.uk

POST 16

2025 -26

POST-16 BROCHURE



We are Eat That Frog!

AND WE'RE DIFFERENT FROM ALL THE REST!

Founded in 2011, we are an Independent Specialist Provider (ISP), solely based around people, values and quality. We enable people to identify and overcome their barriers to live a more fulfilled life.

Our small groups, specialised instructors, 1:1 mentorship and bespoke curriculum offer personalised support that larger institutions cannot. Developing social skills and coping mechanisms to boost confidence, reduce anxiety and join small groups.

"The personalised learning programmes are designed effectively to evolve in stages and enable learners to build on their skills and knowledge and develop their confidence to work in different settings."

February 2024 Ofsted



Transitioning to Eat That Frog

1

Initial consultation

Initial consultation takes place with the Eat That Frog SEND Team.



2

Ascertain requirements

Ascertain learners individual outcomes and needs from their Education and Health Care Plan.



3

Create a transition plan

Create a unique transition plan for every individual learner. To help ease them into life at Eat That Frog.



4

Mind map creation

Work directly with the learner to create a mind-map of their previous history, including likes, dislikes, family life, interests and hobbies.



5

CEIAG

A detailed CEIAG (Careers, Education, Information, Advice & Guidance) is created.



6

Collaborative curriculum

Parents/Carers are invited in with their young learner to meet the team and discuss needs and requirements.



7

Bespoke curriculum creation

Creation of bespoke ICP (Individual Curriculum Plan) is created to meet their careers aspirations and in alignment with their EHCP outcomes and individual targets and needs.

8

Start your journey

All learners develop at different rates and start with Eat That Frog at different levels. With this in mind, each learner takes part in a baseline assessment at the start of their journey in order to find their starting point. These assessments continue throughout their time at Eat That Frog to monitor their progression and what requirements are needed to prepare them for adulthood.



Qualifications

Learners can be offered a range of vocational subjects through OCN and City Guilds:

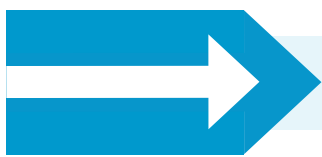
Entry 2 to Level 2 vocational qualifications including Employability, Business, Catering, Hospitality, Creative and Digital Media

Functional skills in maths and English

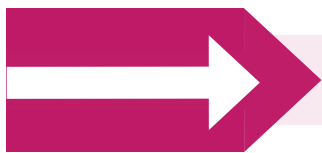
GCSEs in maths and English



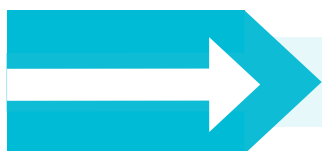
These are chosen with the learners and form part of the individual curriculum plan. The rest of their curriculum is contingent on their destination choices.



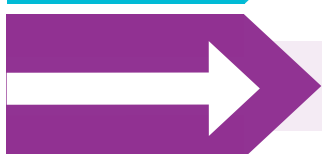
EMPLOYMENT



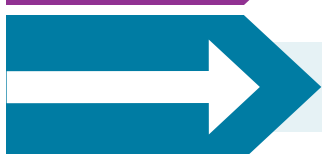
SUPPORTED INTERNSHIP



APPRENTICESHIP



COLLEGE



VOLUNTEERING

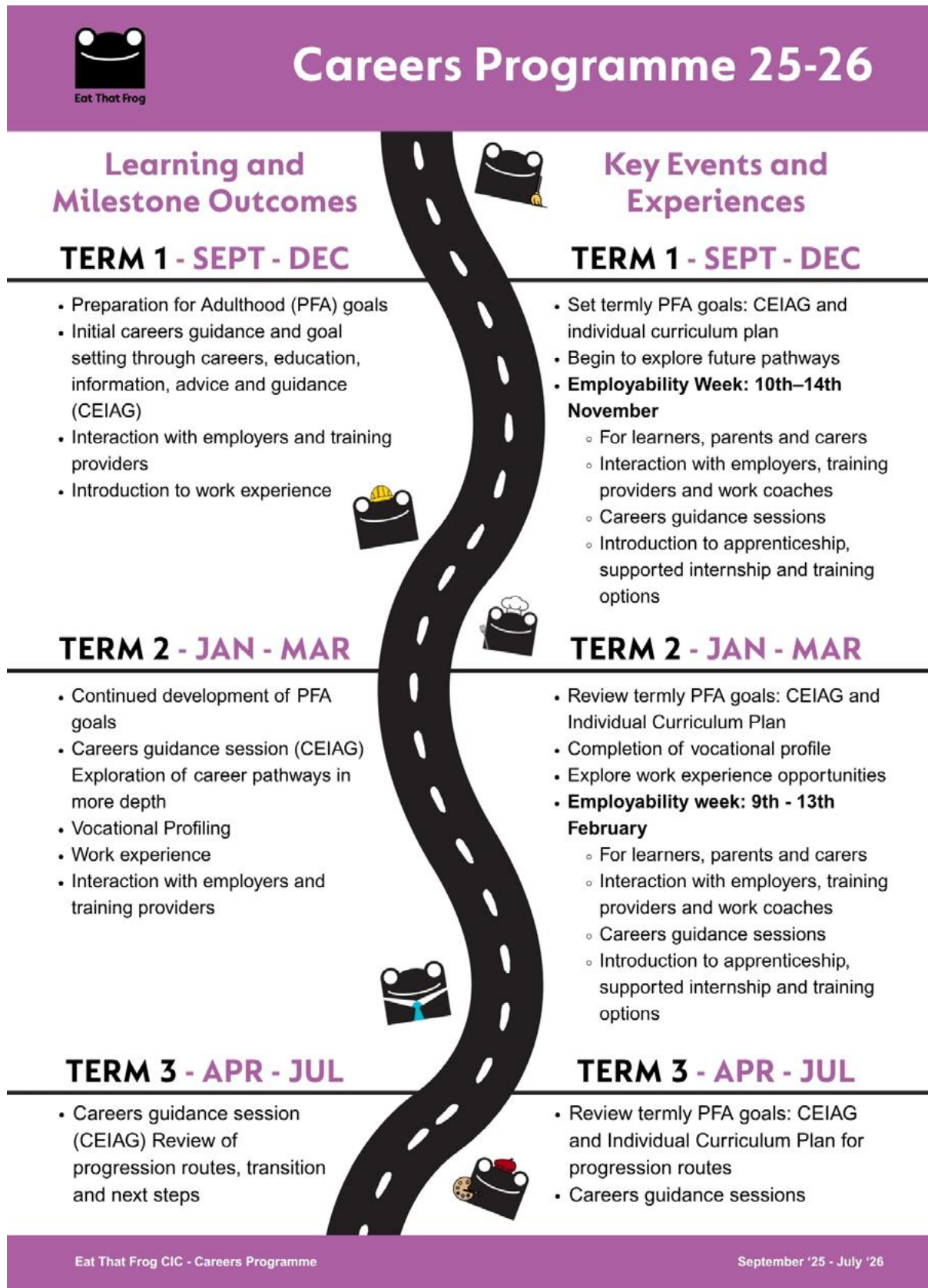
Careers Programme

Funded by



Department for Education

A bespoke careers programme for Eat That Frog to provide good quality careers provision meeting the 8 Gatsby benchmarks as well as personalised advice and guidance from our in-house Careers Advisors.



CORE CURRICULUM

START

Preparing for adulthood (PFA)

Relationships & sexual education (RSE)

Prevent

British values

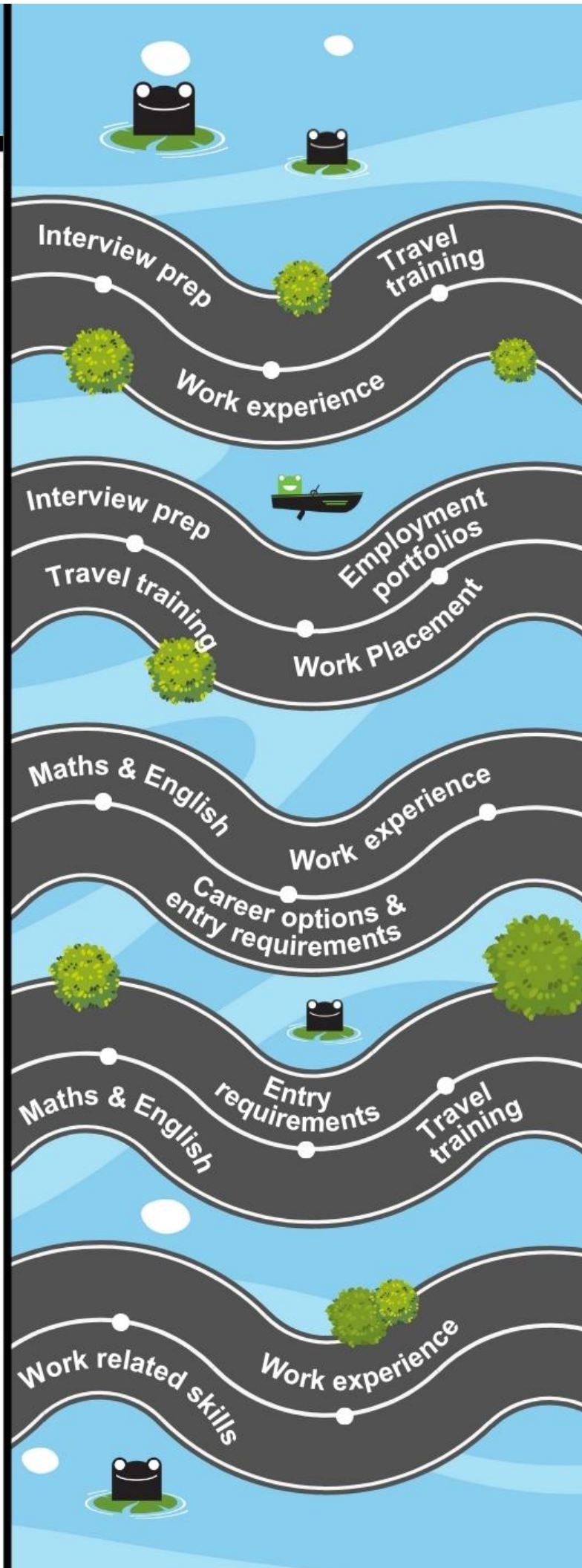
ETF Employability Programme

Work experience

Maths

English

Vocational qualification



2025 POST 16 CURRICULUM



DESTINATIONS

FINISH

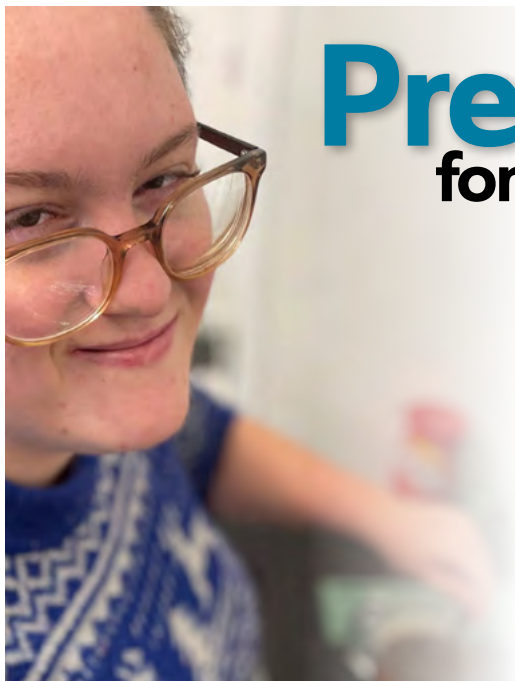
EMPLOYMENT

**SUPPORTED
INTERNSHIP**

APPRENTICESHIP

COLLEGE

VOLUNTEERING



Preparing for Adulthood

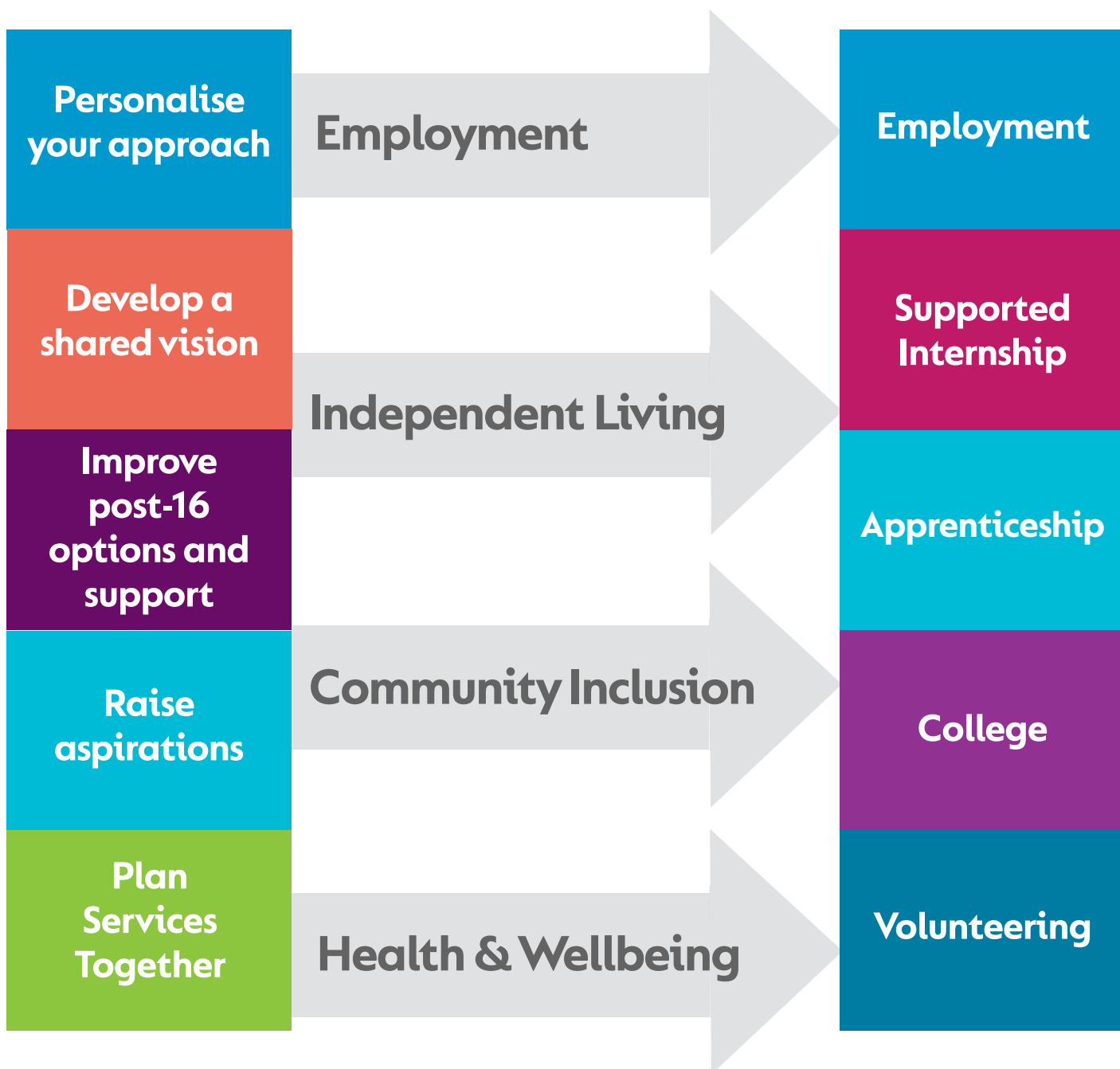
5 Key Messages

...

4 Pathways

...

5 Destinations



Work Experience

Every learner at Eat That Frog is exposed to either internal or external work experience, not only as part of their final destination but also to prepare them for adulthood.





Packages

Dependent on the young person's needs and situations, we can also offer the local authority different post-16 packages:

GROUP MODEL

Provides small, tailored learning environments with 4 - 6 learners per class. Supported by both a teacher and a learning support assistant. This model ensures each learner receives the individual attention they need.

- **Small class sizes**
- **Tailored to individual needs**
- **Social skills development**
- **If successful, progression to education package**

SUPPORTED INTERNSHIPS

Providing first steps into employment by building workplace skills, gaining qualifications and securing jobs. Learners receive education and job coaching in real working environment.

- **Enhance employability and social skills**
- **Progress into paid employment**
- **Develop real working skills**
- **Tapered support from Job Coaches**
- **Spend 16 hrs a week in a work environment**

EDUCATION

Our standard educational package is for those who have either moved from a previous package or are immediately ready to start with ETF. *(Can be adjusted if required)*

- **New curriculum package**
- **Full time is 10 sessions**
- **Ideally hours should be standard from start to meet condition of funding and bands**
- **Use transition days to prepare for the package offered**

SEND and Centre Information

For any SEND enquiries please contact
Zoe Ellis - sendinfo@eatthatfrog.ac.uk

Our centres in Newton Abbot, Paignton, Plymouth, and Exeter accommodate post-16, while our Torquay centre is predominantly adult training and Kings Trust



Newton Abbot

13 Courtenay St, Newton Abbot
TQ12 2QH



Paignton

89 Torquay Rd, Paignton
TQ3 2SE



Plymouth Pathways

Studio 5-11, Millbay Road
Plymouth, PL1 3LF



Exeter

60 South St, Exeter
EX1 1EE



Plymouth Futures

26 Lockyer Street,
Plymouth PL1 2OW



Torquay

91 Union St, Torquay
TQ1 3DG



eatthatfrog.ac.uk

01803 551551 

info@eatthatfrog.ac.uk 

Plymouth, Torquay, Newton Abbot, Paignton and Exeter 

