

AWWE

From The Well

Autumn\Winter Exhibition 2021



We as artists try to live in a constant state of awe at the world around us & reflect it back in our individual practices.

Our Autumn/Winter Exhibition 2021 represents our interpretation of AWE from those completed the last year or so.

This exhibition is a showcase for members of the From The Well Collective and, being a group show, includes a diverse range of content, a selection of mediums and always something to delight all visitors

#### Artists

Amanda Reville

Anna de Cléir

J. D. Luttrell

John Tierney

Lyn B Worrall

From The Well are an artist collective based in Newbridge. We formed in 2018 with hopes to become an arts collective with equal access opportunities for any adult to explore creative visual arts work, recognising the continuum of practice and where we as a group of emerging artists sit. From The Well is intergenerational and includes people from diverse backgrounds. More on FTW [Here](#)

# Pieces List



Kitchen Reflections 1  
Room with two views  
Descending Lines  
Fragments of comfort II.1  
Fragments of comfort II.2  
Fragments of comfort II.3  
Misdirection  
Misdirection 2  
Breadboard fantasy  
Deep into the night in the house of dreams  
Brand new.. No2  
The sad man with the crooked mouth  
Autumn Leaves 1  
Autumn Leaves 2  
Autumn Leaves 3  
Foxglove  
Natural Icon

Anna de Cléir  
Anna de Cléir  
Anna de Cléir  
Lyn B Worrall & J.D. Luttrell  
Lyn B Worrall & J.D. Luttrell  
Lyn B Worrall & J.D. Luttrell  
Amanda Reville  
Amanda Reville  
Johnny Tierney  
Johnny Tierney  
Johnny Tierney  
Johnny Tierney  
J.D. Luttrell  
J.D. Luttrell  
J.D. Luttrell  
Lyn B Worrall  
Lyn B Worrall

Please email  
[wearefromthewell@gmail.com](mailto:wearefromthewell@gmail.com)  
or  
call 0872646685 to purchase any of the  
works or prints where available.



## Anna de Cléir

Kitchen Reflections 1

Watercolour, Cotman cold  
pressed watercolour paper

44cm X 30cm

€320

These are moments of stillness,  
simplicity and reflection that I  
want to capture forever.



From The Well



## Anna de Cléir

Room with two views

Watercolour, Cotman cold pressed watercolour paper

44cm X 30cm

€320

Prints Available

These are moments of stillness, simplicity and reflection that I want to capture forever.

Autumn\Winter Exhibition 2021

Buy





From The Well



## Anna de Cléir

Descending Lines

Watercolour, Cotman cold  
pressed watercolour paper

44cm X 30cm  
€320

Prints Available

These are moments of stillness,  
simplicity and reflection that I  
want to capture forever.

Autumn\Winter Exhibition 2021

Buy

# Anna de Cléir

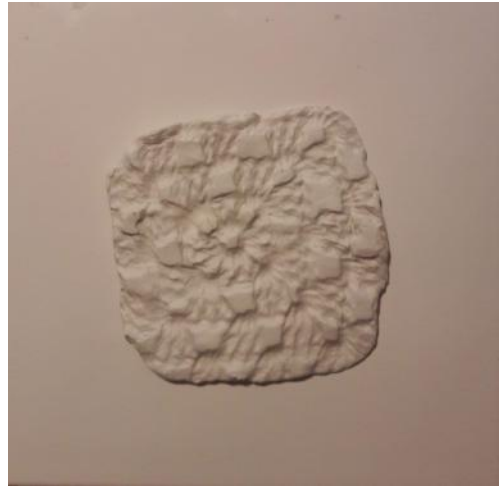


The theme of my work focuses on the stillness and peace available in everyday ordinary places. This is enlightened by moments from my yoga and meditative practice, allowing

me appreciate the seasonal changes in natural light on everyday objects. These are moments of stillness, simplicity and reflection that I want to capture forever. My paintings

show a perspective and an enjoyment for letting things flow and be just as they are.





## J.D. Luttrell & Lyn B Worrall

Fragments of comfort II.1 - 11.3  
Limited Series

Clay

20cm X 20cm  
€65

Threads of remembering who we are; a granny square where a circle becomes a square which in turn becomes a warm blanket, a motif of comfort. In times of stress we reach for comfort and security however fragmentary.

In 2020 J.D. & Lyn worked remotely, via zoom, post and voice to create pieces that represented how we dealt with a crisis. We sought out handcrafts & tactile making.

These fragments communicate the delicate, often fragile, each unique comforts people reach for in times of stress.

From The Well

Autumn\Winter Exhibition 2021

Buy





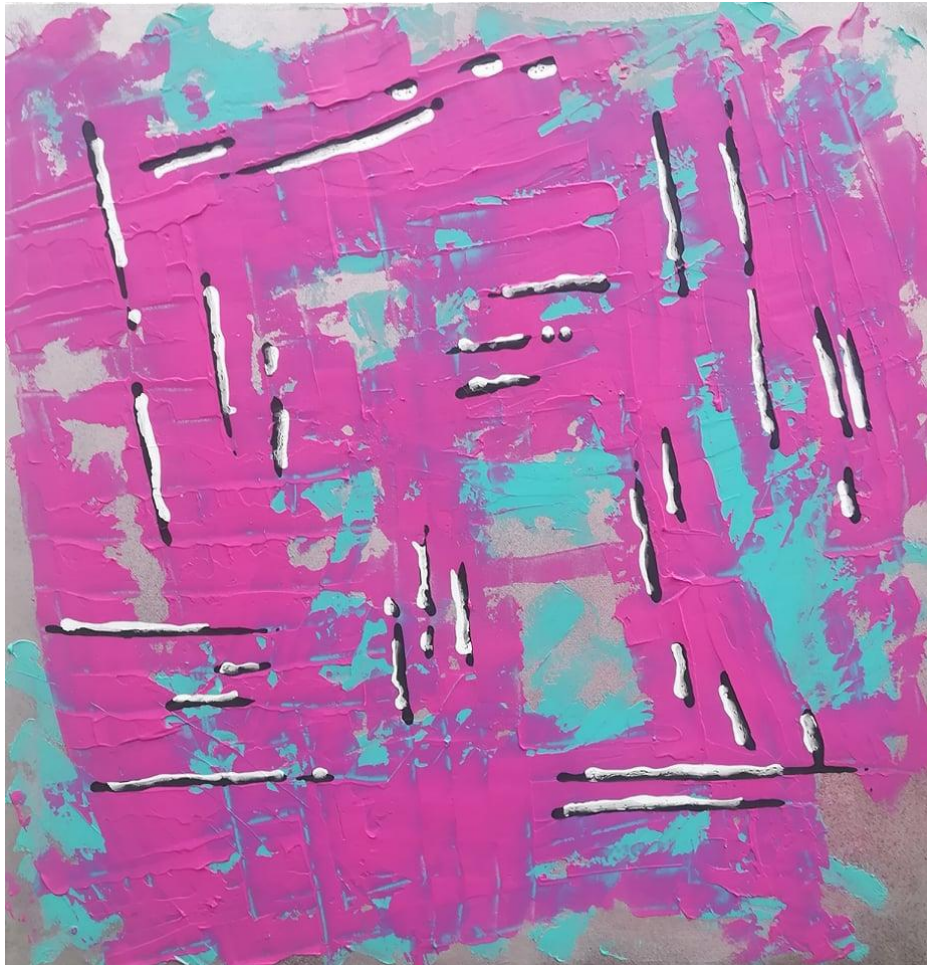
## Amanda Reville

### Misdirection 1

Mixed media on recycled canvas

50cm X 50cm  
€80

These Pieces are some of my most recent work. They were created using upcycled canvas. The materials used are acrylic and 3d paints as well as various adhesives. These pieces express my uneasiness and uncertainty of these times.



From The Well

Autumn\Winter Exhibition 2021

Buy



## Amanda Reville

### Misdirection 2

Mixed media on recycled canvas

50cm X 50cm  
€80

These Pieces are some of my most recent work. They were created using upcycled canvas. The materials used are acrylic and 3d paints as well as various adhesives. These pieces express my uneasiness and uncertainty of these times.

From The Well

Autumn\Winter Exhibition 2021

Buy

# Amanda Reville

I am a mixed medias artist, based in Newbridge.  
My process is self learning, through the  
exploration mistakes, failures and accidental  
discoveries.



From The Well

Autumn\Winter Exhibition 2021

Buy





From The Well



**Johnny Tierney**

"Breadboard fantasy"..

Mixed media on (bread) board.

100cm X 80cm  
€POA

Autumn\Winter Exhibition 2021

Buy



## Johnny Tierney

The sad man with the crooked mouth

Pens on paper

20cm X 100cm

€75

Prints Available

From The Well

Autumn\Winter Exhibition 2021

Buy





AWE

## Johnny Tierney

Deep into the night in the house  
of dreams

Mixed media on board.

80cm X 50cm  
€POA

From The Well

Autumn\Winter Exhibition 2021

Buy



From The Well



## Johnny Tierney

Brand new.. No2

Mixed media on paper.

30cm X 20cm

€75

Prints Available

Autumn\Winter Exhibition 2021

Buy

# Johnny Tierney

AWE

My career as an artist has been a very solitary journey. I am a self taught artist with practically no formal training or education in the arts. I have an eye for the unusual and have been compelled to make pictures for as long as I can remember. Ever since then my process has evolved naturally, so in a way my lack of education has allowed my style to develop its own distinct character.

A compulsion to create for artist purposes has been with me all my life. For example as a working taxi driver for over 25 years, I have developed a routine which has lead to me amassing a considerable body of work.



From The Well

Autumn\Winter Exhibition 2021

Buy



From The Well



**J.D. Luttrell**

Eco Print, on Awagami Bamboo paper

€250

Quinsborough  
Garden, Monasterevin, Co.  
Kildare.  
September 2021.

Prints Available

Autumn\Winter Exhibition 2021

Buy





**J.D. Luttrell**

Autumn Leaves

Eco Print, on Awagami Bamboo  
paper

€250

Quinsborough  
Garden, Monasterevin, Co.  
Kildare.  
September 2021.

Prints Available

From The Well

Autumn\Winter Exhibition 2021

Buy





AWE

**J.D. Luttrell**

Autumn Leaves

Eco Print, on Awagami Bamboo  
paper

€250

Quinsborough  
Garden, Monasterevin, Co.  
Kildare.  
September 2021.

Prints Available

From The Well

Autumn\Winter Exhibition 2021

Buy

# J.D. Luttrell



As an emerging artist, using mixed media in my work has been a lifelong occupation. Each piece I create is dialogical in nature, each an attempt to connect, often to record, my inner landscape with the outer landscape .

I am a founding member of 'From the Well ' Arts co-operative .

My work had been exhibited in Riverbank Arts Centre and in Bealtaine Festivals, in Newbridge , Co. Kildare .

My professional and academic life was in Science, Theatre, Drama in Education, Radio and Television. Originally from Newbridge, Co. Kildare, I now live in Monasterevin, Co. Kildare.



**Lyn B Worrall**  
Natural Ikon

Acrylic, mixed media,  
copper leaf on box canvas

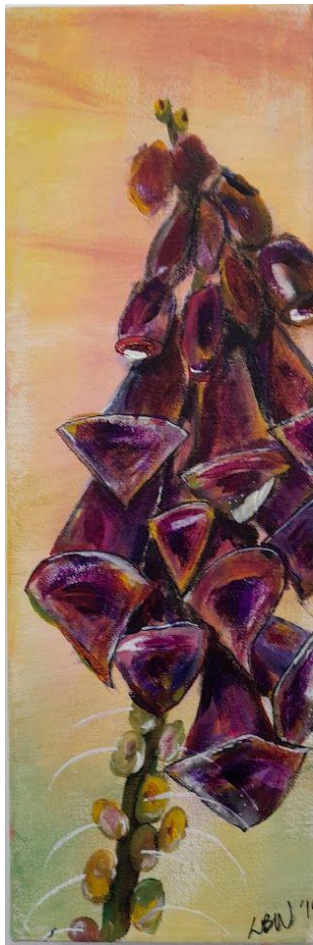
100cm X 30cm x 4cm  
€200

Who do we worship? Why should we? Our ancestors held our natural environment and trees in particular in high esteem, maybe when we stopped worshipping our world we lost it. Should we worship our fellow life again and maybe save us all?

From The Well

Autumn\Winter Exhibition 2021

Buy



From The Well

AWE

**Lyn B Worrall**  
Foxglove

Acrylic on box canvas

30cm X 10 cm  
€100

Inspired by the wilds of the Curragh,  
Foxglove a dangerous yet endangered  
native.

Autumn\Winter Exhibition 2021

Buy

## Lyn B Worrall

### Contact Details

Lyn is emerging as an artist through developing a practice grounded in environmental and social conscience.

A founder member of the From The Well arts co-operative in Newbridge, Co. Kildare she has exhibited in group shows in the Riverbank Arts Center & in venues in Kildare.





# From The Well Collective



From The Well are an artist collective based in Newbridge. We formed in 2018 with hopes to become an arts collective with equal access opportunities for any adult to explore creative visual arts work, recognising the continuum of practice and where we as a group of emerging artists sit. From The Well is intergenerational and includes people from diverse backgrounds.

The initial aims for From The Well were to establish as a collective, meet regularly, produce professional quality work, engage with the wider arts community in Kildare, participate in community arts events and develop our own individual practices as professional working artists.

We support and encourage our members to continue their practice and work towards our group goals. We have a waiting list for membership at present.

We are grateful for the support of the Kildare Arts Service particularly as we came from The Creative Well, a well-being initiative of the Kildare Arts Service.

Members have continued to meet and work through the challenging past years, including participating in some remote and outdoor works, and we emerge now with our A/WE still intact to resume our collective.

We were grant aided by Kildare Arts Service and are grateful for the support of Kildare Library Service for facilitating our studios and this exhibition.

Contact us at <https://linktr.ee/wearefromthewell>

