



✦ casa ✦
BRANCA

COLLECTION II

Into the Woods

Nature has always been an abundant source of inspiration in design, and our experience of the outdoors makes its way into our homes in myriad ways.

Into the Woods, the second collection from Casa Branca, features classic Branca motifs like tartan, verdure, camouflage, and stripes—and recalls these natural design elements in new and exciting ways.

Whether it's a mountain chalet, forest cabin, or your own personal retreat at home, our new patterns and materials provide a natural and cozy transition from the outdoors in.

Escape to the indoors.





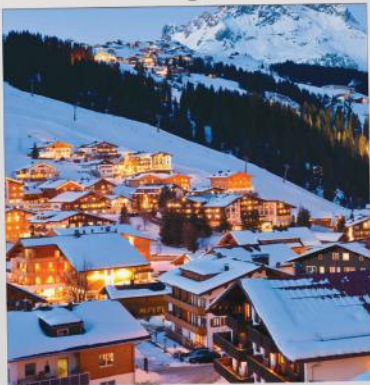
Freedom Lodge, Montana
Pearson Design Group



Verbier Vacation,
Slim Aarons



alpine chalet, Tino Zervudachi



lech am Arlberg, Austria



batique hotel wachthof



Alpine Chalet, Tino Zervudachi



PANTONE
19-1662
Branca Red



Negroni







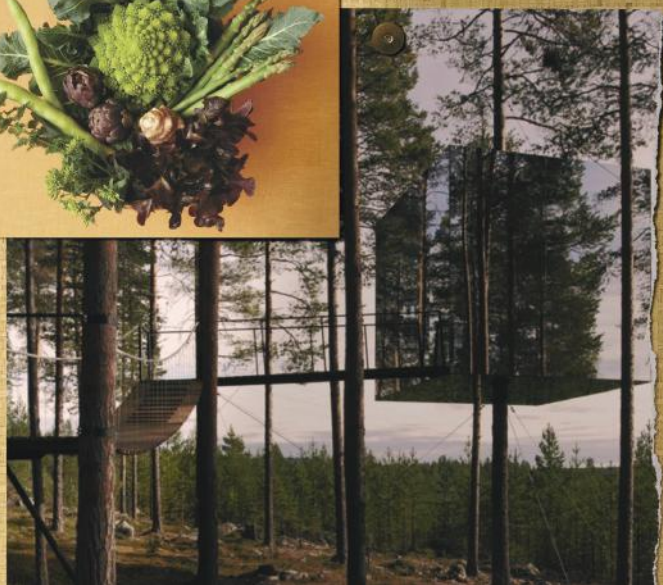
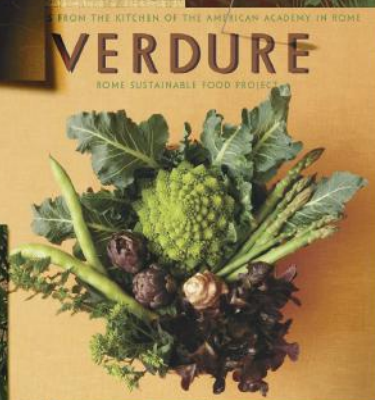
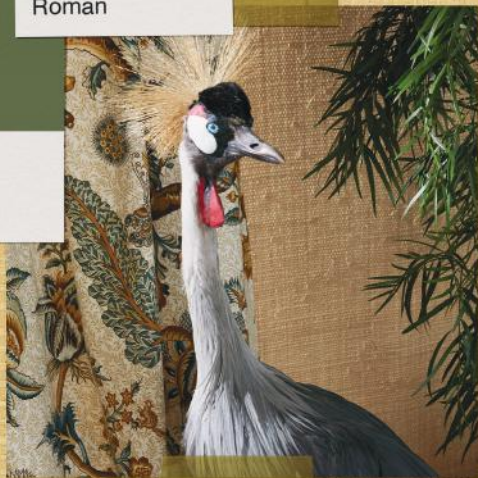
PANTONE
15-1218
Putty



PANTONE
13-0640
Roman



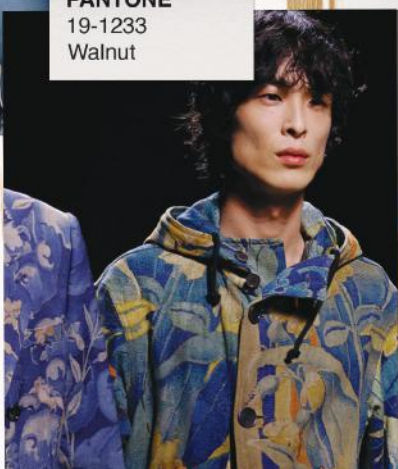
PANTONE
18-0328
Olive





PANTONE
18-4036
French

PANTONE
19-1233
Walnut





Audrey

LINEN

Repeat: 27" H x 26³/₁₀" V

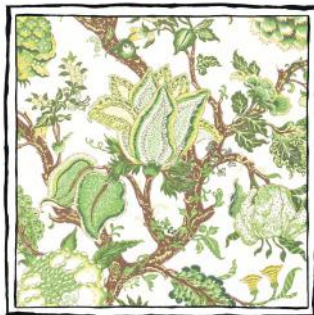
Width: 54"

Content: 100% Linen

"I would love to see Audrey covering an entire room. Even elaborate patterns become almost neutral when used everywhere."

ALESSANDRA BRANCA

Inspired by a beloved antique textile in Alessandra's collection, Audrey's namesake comes from the star plant in *Little Shop of Horrors*. Printed on upholstery weight linen rather than the traditional glazed cotton, this large-scale pattern is a chintz with a twist.



Bolzano



St. Moritz



Merano





Bosco

COTTON SATEEN

Repeat: 27" H x 27" V

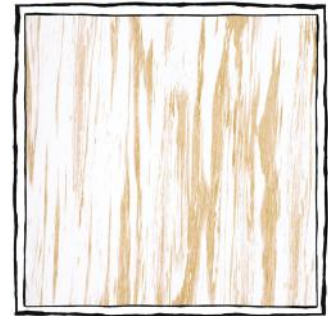
Width: 54"

Content: 100% Cotton Sateen

Inspired by an antique Macassar wood box nestled in the corner of Alessandra's office, Bosco is a lush faux bois pattern with roots stretching back to the trompe-l'oeil techniques of Renaissance Italy.



Macassar



Beechwood



Macassar

Cortina Tartan

Repeat: 9 $\frac{2}{3}$ " H x 9 $\frac{2}{3}$ " V

Width: 59"

Content: 100% Pure New Wool

"No interior in my world can exist without tartan.

It's a classic that can be used everywhere."

ALESSANDRA BRANCA

Woven for us in Scotland, the enchanted home of lochs, castles, clans, and kilts, our Cortina Tartan is a reinterpretation of our signature Branca Stripe. This sumptuous wool is warm, soft, and perfect for a library or study with a subtle masculine air.



St. Mortiz



Merano



Bolzano









Giardino Camo

PERFORMANCE

Repeat: 13½" H x 13¼" V

Width: 55"

Content: Solution Dyed Acrylic

"With camouflage there is both a visual and cultural tension that I love. I like to use the pattern as a spice in interiors, something to kick things up a notch!"

ALESSANDRA BRANCA

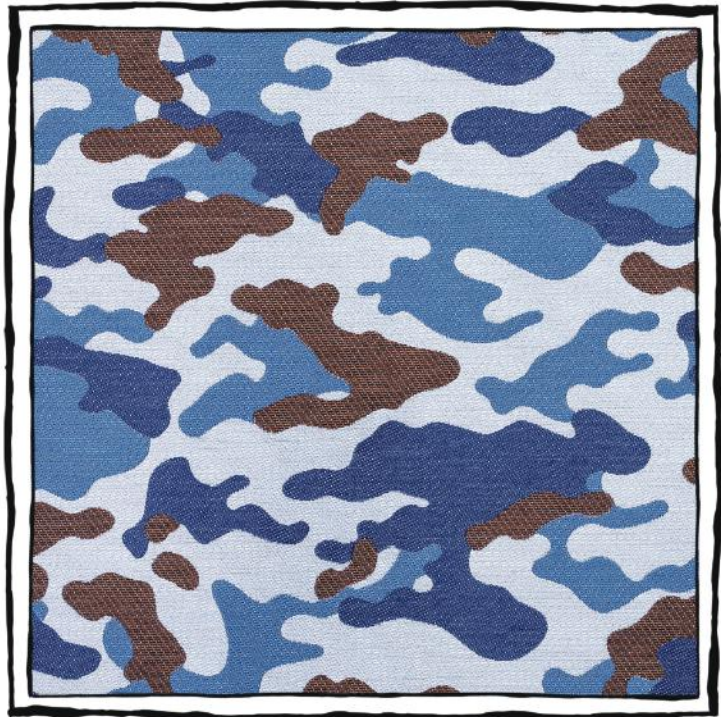
Our Giardino Camo is a modern, woven alternative to traditionally printed camouflage. Adventurous yet timeless, use it in playrooms, children's bedrooms, or upholster a piece of classical furniture like a Louis XV chair for a rebellious twist. Soft to the touch, yet resilient and suited to the outdoors.



St. Moritz



Bolzano



Merano





Verdure Camo

LINEN

Repeat: 27" H x 34½" V

Width: 54"

Content: 100% Linen

Offered in colors that change with the seasons, our Verdure Camo is a hybrid blend of 16th Century tapestries and classic camouflage. Printed on a robust, upholstery weight linen, pair it with midcentury furniture for a surprisingly modern feel.



Bolzano



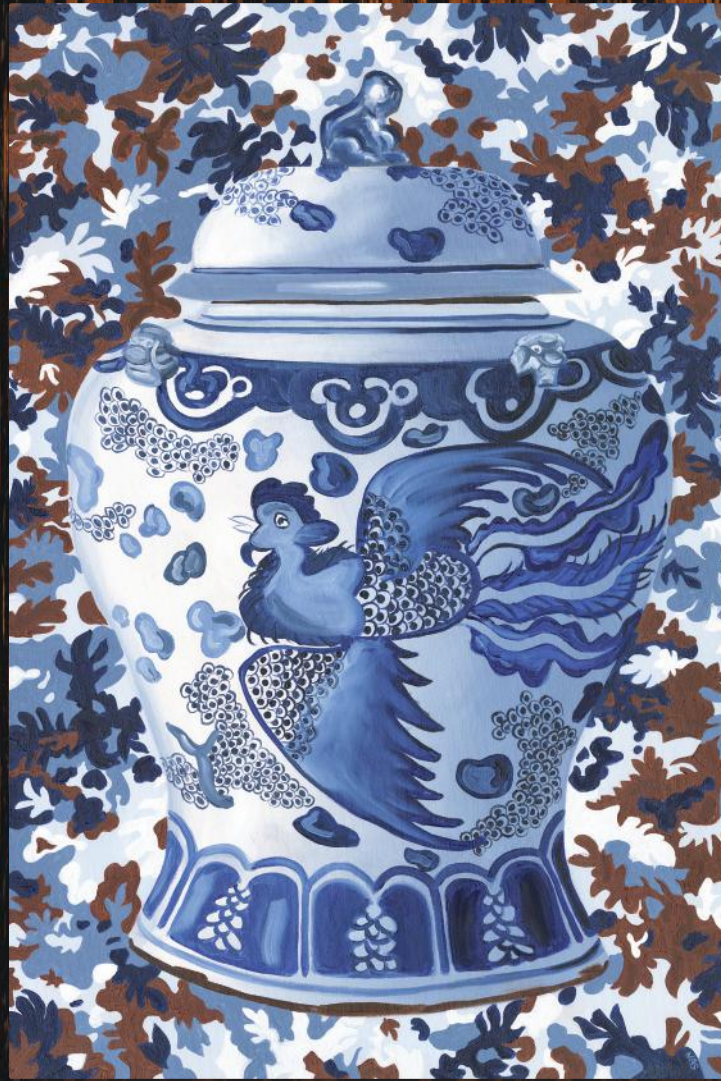
Merano



St. Moritz







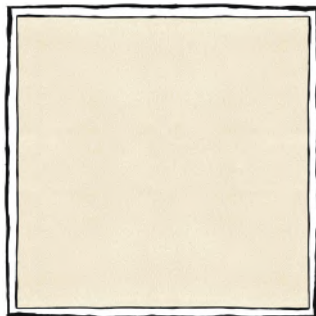
Varese Cotton Velvet

Width: 55"

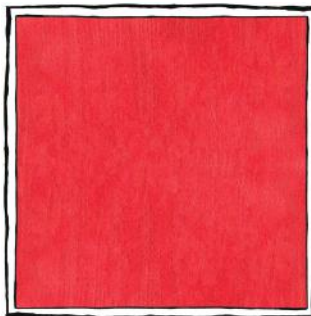
Content: 100% Cotton

"No interior of mine has existed without velvets and mixtures of textures. It's all about these mixes, and we have created a series of velvets that coordinate with our other fabrics and wallpapers."

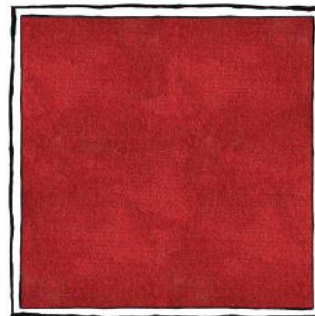
ALESSANDRA BRANCA



Off-White



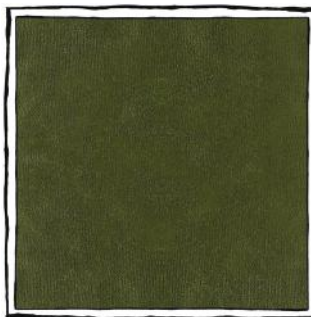
Coral



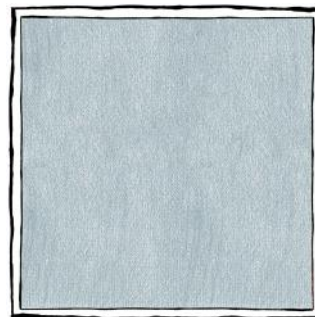
Branca Red



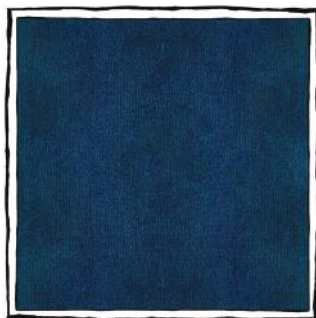
Leaf



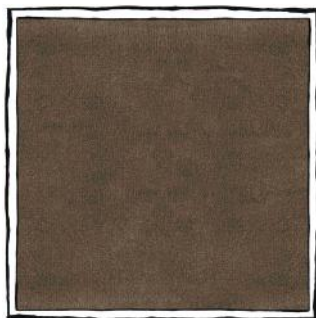
Loden



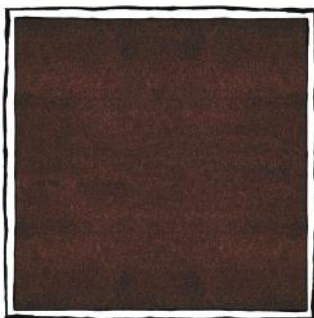
Sky



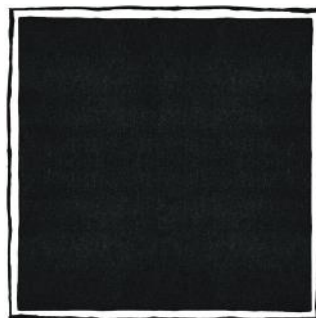
Prussian Blue



Mushroom



Walnut



Nero





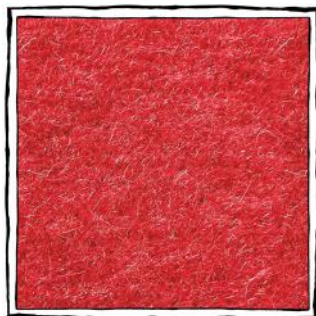
Garda Mohair

Width: 54"

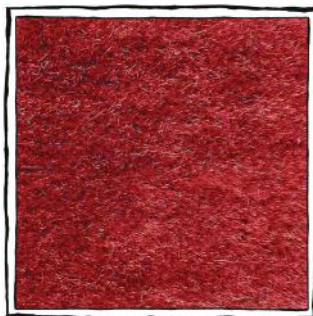
Content: 100% Mohair

"Mohair is a fantastic material. It has a wonderful strong, dry quality. We're offering it in colors that are updated for use in playrooms, family rooms, living rooms, and more."

ALESSANDRA BRANCA



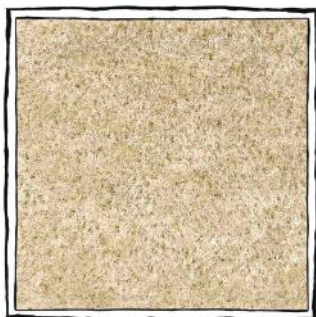
Coral



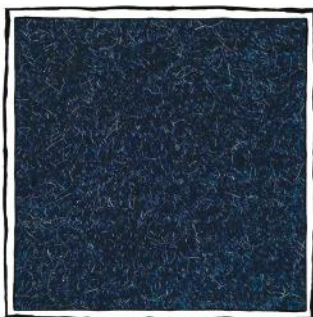
Branca Red



Forest



Off-White



Blu



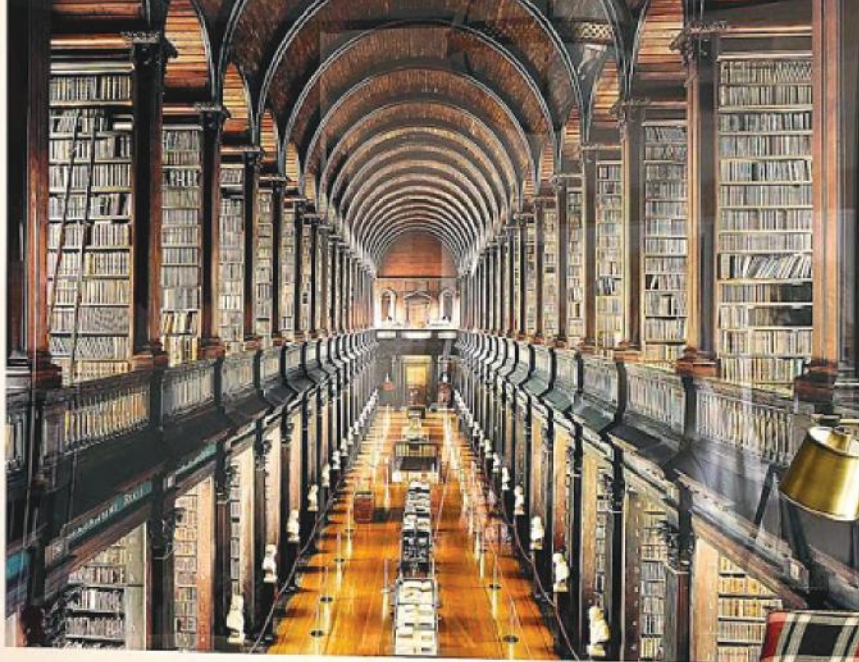
Mushroom

“

*Velvets are fundamental
to our interiors and are used in
every way in the Branca world.*

ALESSANDRA BRANCA





Bosco

WALLPAPER

Repeat: 27" H x 27" V

Width: 27"

Content: Clay Coated Paper



Beechwood



Macassar



Macassar

Bosco Branca Stripe

WALLPAPER

Repeat: 27" H x 27" V

Width: 27"

Content: Clay Coated Paper

"Macassar ebony is an amazingly rare and beautiful wood found in Indonesia. Karl Springer made it into furniture up into the 80s, and it has a rich history going back to the 19th Century. We're delighted to continue the tradition and update it with our signature stripe!"

ALESSANDRA BRANCA



Macassar







Madagascar

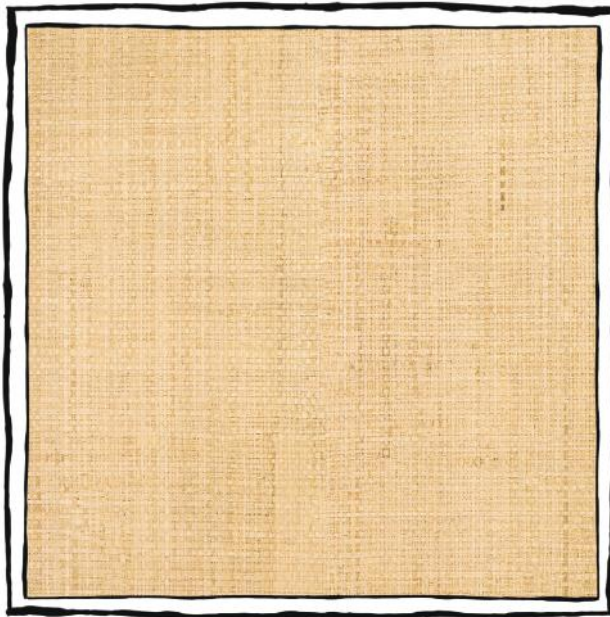
WALLPAPER

Repeat: 33" H x 36" V

Width: 33"

Content: Paperweave

Wallpaper hangers rave about the ease of installing our Madagascar papers! Now available as a plain, it is a joy to work with and provides a rich, neutral backdrop to any room.



Madagascar



Marmo I

WALLPAPER

Repeat: 13½" H x 13" V

Width: 27"

Content: Clay Coated Paper

"Marble is very much a part of who we are. It's our culture, our origin, it's part of every church I ever walked into in Italy. I am more fascinated by the faux marble, because it's usually more naive and intentionally artistic."

ALESSANDRA BRANCA

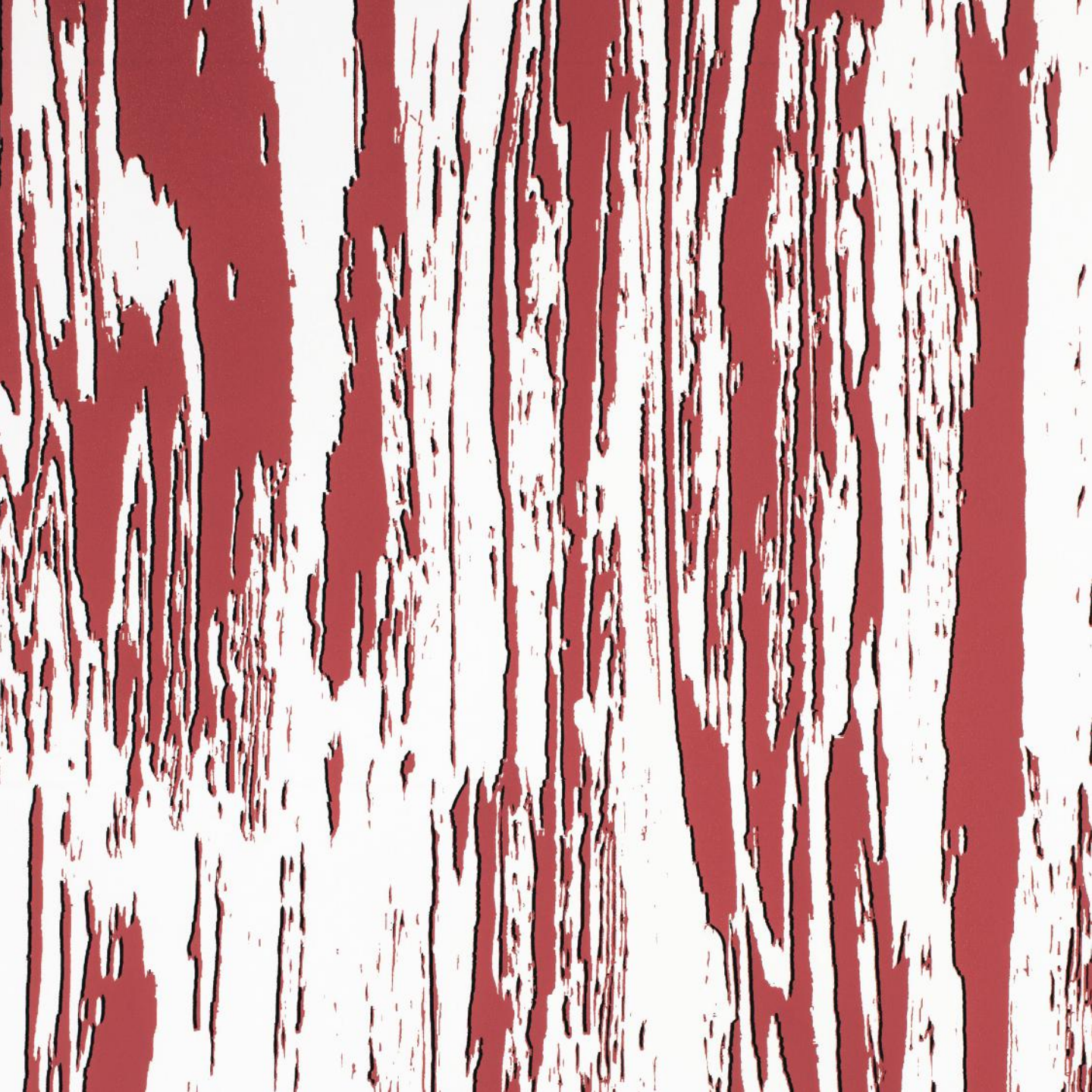


Branca Red



Beechwood





Umbra

WALLPAPER

Repeat: 27" H x 27" V

Width: 27"

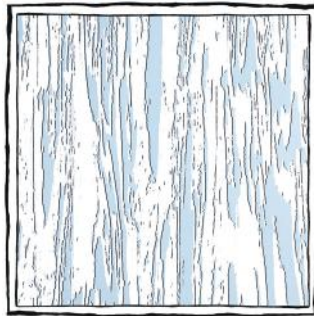
Content: Clay Coated Paper

Umbra is our graphic interpretation of faux bois imbued with a modern livability. It is at once down to earth and exquisitely detailed.

“

We made a playful wallpaper not found in nature, just as faux bois is not always meant to look exactly like wood. Faux bois is one of my favorite things, and I love trompe l'oeil - I love anything that is a trick of the eye and has some sort of whimsy to it.

ALESSANDRA BRANCA



Merano



St. Moritz



Bolzano



Beechwood

Verdure Camo

WALLPAPER

Repeat: 33" H x 34½" V

Width: 33"

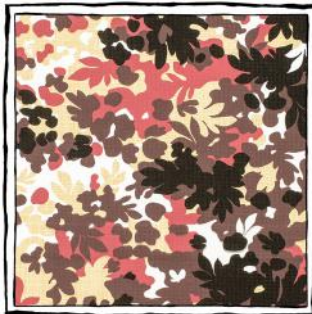
Content: Paperweave

"This is my version of verdure tapestries that historically decorated grand houses and hunting lodges. It's a graphic, almost modern pattern that can be viewed in a completely different way. We've adapted the print from our Verdure Camo linen and applied it to a textural paperweave. It would be great to use it all over and disappear in your room!"

ALESSANDRA BRANCA



Bolzano



St. Moritz



Merano









Casa Branca is a vision for the home by acclaimed designer Alessandra Branca.

Featuring an inspiring array of textiles and wallpapers—in addition to coordinating furniture, tabletop, art, and accessories—each collection is born of Alessandra's eye for "the mix."





WE INVITE YOU TO SET UP
A TRADE ACCOUNT



Open your camera & point at the code.
A link will prompt you at the top of your screen.



Showrooms

WEST PALM BEACH | CB ATELIER
2410 Florida Ave
West Palm Beach, FL 33401

ATLANTA | AINSWORTH-NOAH
351 Peachtree Hills Ave NE #518
Atlanta, GA 30305

PALM BEACH | CB BOUTIQUE
344 Worth Ave
Palm Beach, FL 33480

DALLAS | JAMES SHOWROOM
1025 N. Stemmons FWY. #250
Dallas, TX 75207

LOS ANGELES | CASA BRANCA
West Hollywood, CA 90069
By appointment only

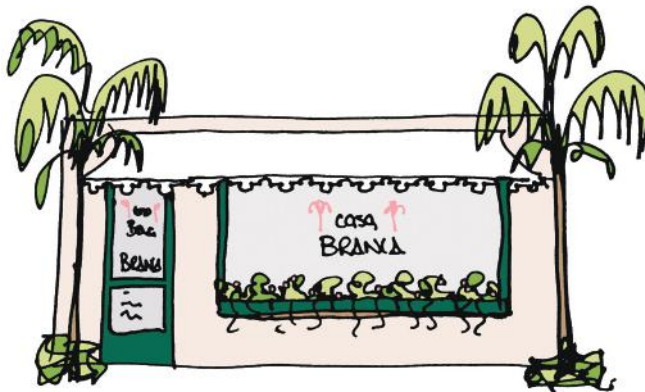
HOUSTON | JAMES SHOWROOM
5120 Woodway Drive #3029
Houston, TX 77056

MIDWEST | CLOTH & KIND
940 N Main St.
Ann Arbor, MI 48104

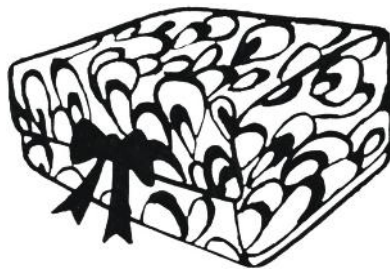
NEW YORK | JAMES SHOWROOM
Interior Arts Building, 306 E 61st St.
New York, NY 10065

MIDWEST | CLOTH & KIND
907A Green Bay Rd.
Winnetka, IL 60093

LONDON | TISSUS D'HELENE
421, Design Centre East
Chelsea Harbour Dr.
London SW10 0XF







Call: 310.844.1186

Follow: @casabranca

Write: welcomehome@casabranca.com





+ casa +
BRANCA

CASABRANCA.COM