



# Lola's bedroom

cosy, comfy,  
full  
of character



This isn't just a "girly room."  
It's a world that grows with  
her, from tea parties under  
the teepee to quiet moments  
curled up in a flower-shaped  
mat.

Here, nothing is too much.  
Ruffles and velvets, hearts  
and garlands, all carefully  
layered into a palette that  
whispers rather than shouts.

*It's a room that celebrates her girlhood, not by shrinking it  
into pastel perfection, but by expanding it into softness, warmth,  
and curiosity.*





Dusty pink, deep red, beige, with accents of dark and light blue. Together, they create a gentle, layered harmony – feminine but not cliché, soft but full of character.

## Colour palette

Gentle, layered harmony.  
Feminine but not cliché.



warm: dark red, vivid red, soft pink

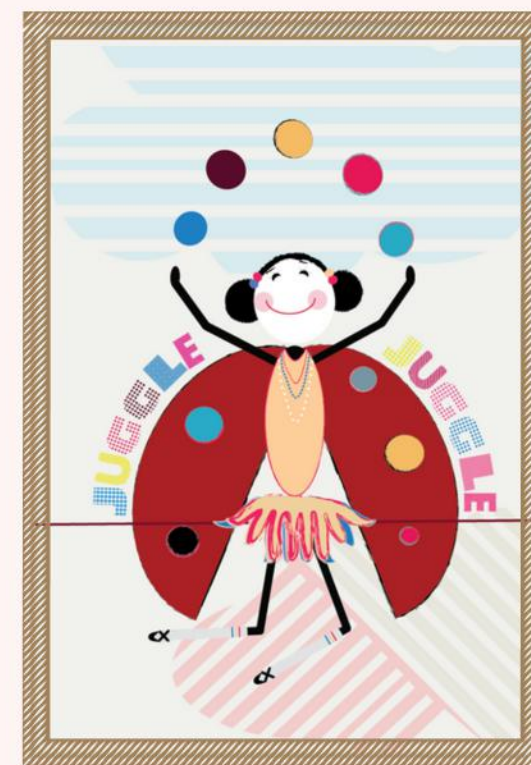
cold: shades of blue

neutral: warm beige



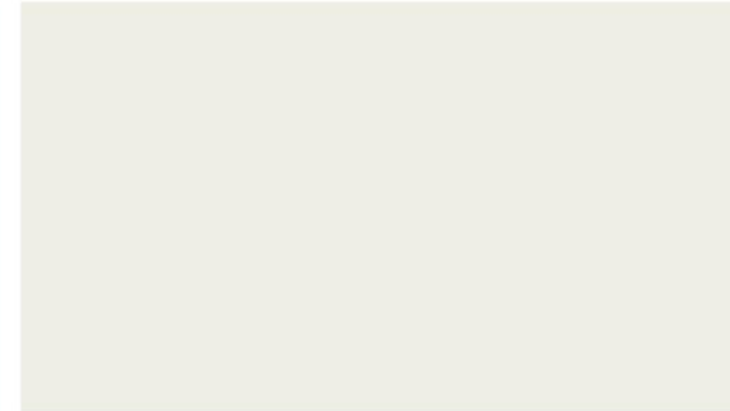
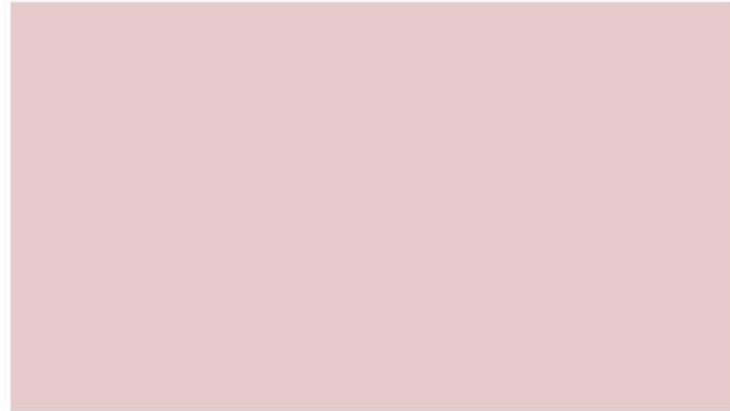
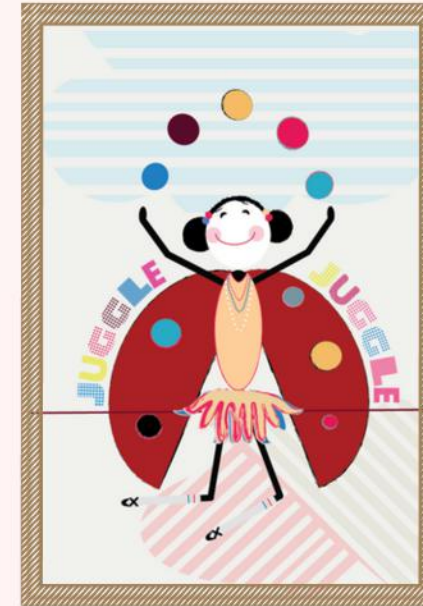
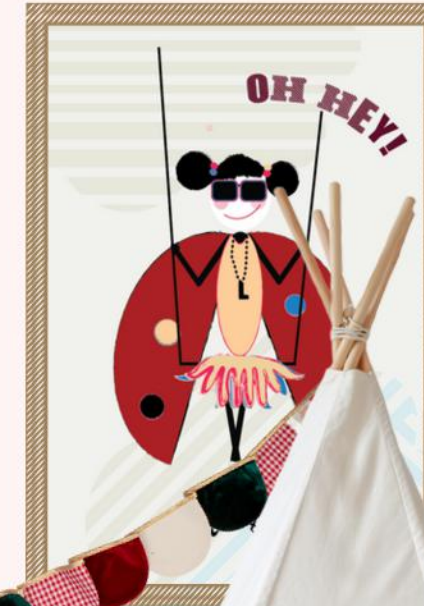
# Lola's bedroom

cosy, comfy,  
full



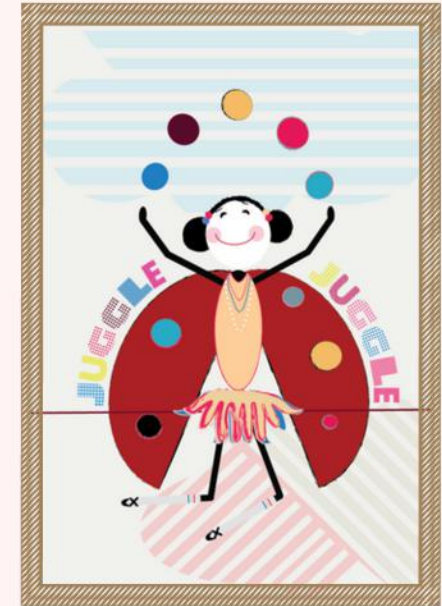
Lola's  
bedroom

cosy, comfy,  
full



Lola's  
bedroom

cosy, comfy,  
full



# Shop The Look

ROOM ELEMENTS

*Pink muslin bed curtains*

WALLART

ACCESSORISE



*Lola*



*Round Blush Floor Mat*

*Shabby Chic Teepee Tent*

*Pillows*



# Moodboard items



The accessories featured are practical and stylish. They're also easy to layer, so you can swap, rotate or add without overwhelming the space.

*You may follow the links to each product at [designhomespace.com](https://designhomespace.com) to recreate the look - click here*



*Or, simply use this as inspiration to find pieces that match your style and story.*

If you need my support, send me a message to:  
[hello@designhomespace.com](mailto:hello@designhomespace.com)





# *Moodboard Instructions in 5 steps*

(but only if you're not too busy running the world)

## *1. Look at the walls first — it's the biggest (and could be the dearest) part.*

Start with a base colour: creamy neutrals or soft pinks work beautifully. Then choose—a few scattered wall stickers or a full wallpaper feature wall?

If you're going for wallpaper, measure your space first and ensure you can order the right size. It often sets the entire tone — and is often your biggest investment.

## *2. The main question: playroom, bedroom, or all-in-one?*

This mood board shows a playful teepee tent and a cosy house bed with a bed curtains. But your room might be a sleeping space, a shared room, or a play zone. Maybe it's got a house bed, a bunk, a co-sleeper. What matters is asking: What does this room need to be for your child? Build from there.



### 3. *The room is their universe.*

This space is more than just four walls — it's your child's entire world. It's where stories are invented, where forts are built, where playdates turn into wild adventures, and quiet afternoons become unforgettable. A teepee tent becomes a secret reading nook. A house bed isn't just for sleeping — it's a castle, a hiding spot, a stage. Pillows are not just decorations but ingredients for cosy dens and spontaneous snuggling. Create a soft, safe, and beautiful playground that lets them explore, rest, and grow — all in one place. Because to your child, this isn't just a room. It's their universe. And they should love being in it.

### 4. *The little (allegedly optional) things.*

Layering the floor and styling the bed is like giving your child the best kind of nourishment. Soft shapes, odd textures, pillows shaped like leaves or hearts or flowers, they don't just decorate; they invite. Invite to imagine, to rest, to invent stories. That's where the play begins.

### 5. *No, it's not anybody's room — it's your child's.*

If it feels right to you, it belongs. Garland over the bed? Family photo by the shelf? Pinecones collected on a walk? Yes. This room doesn't have to look like a magazine. It needs to feel like home. That's when the magic really happens.





# Lola's bedroom

[www.designhomespace.com](http://www.designhomespace.com)

