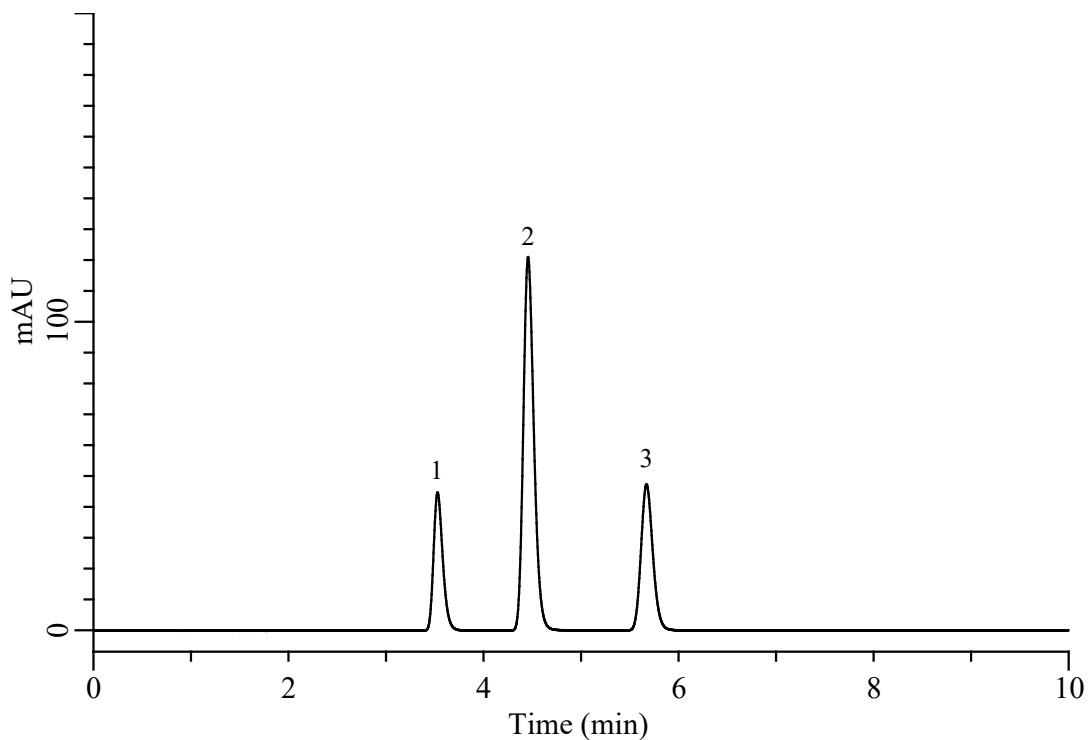


InertSearch for LC

Inertsil Applications

Analysis of Terphenyl

Data No. LB821-1087



Conditions

System : Chromaster HPLC system (HITACHI)
Column : InertSustain C30 (GL Sciences Inc.)
(5 μ m, 150 x 4.6 mm I.D.)
Column Cat. No. : 5020-17144
Eluent : CH₃OH/H₂O = 90/10, v/v
Flow Rate : 1.0 mL/min
Col. Temp. : 40 °C
Detection : UV 254 nm
Injection Vol. : 10 μ L
Sample : Standard

Analyte:

1. o-Terphenyl
2. m-Terphenyl
3. p-Terphenyl

(10 mg/L each)