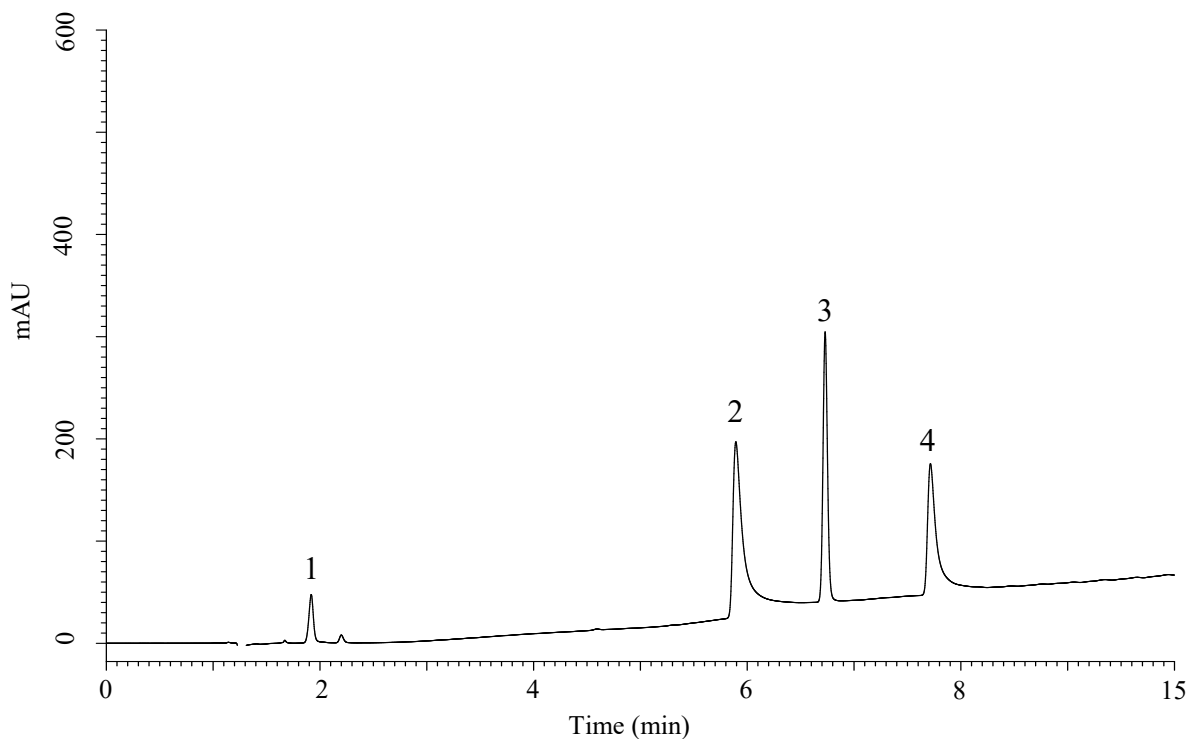


# InertSearch for LC

Inertsil Applications

## Analysis of components of coffee (InertSustain AX-C18)

Data No. LB734-0806



### Conditions

**System** : Chromaster HPLC system (HITACHI)  
**Column** : InertSustain AX-C18 (GL Sciences Inc.)  
(3  $\mu$  m, 150 x 2.1 mm I.D.)  
**Column Cat. No.** : 5020-91039  
**Eluent** : A) 10 mM HCOONH<sub>4</sub> in  
(CH<sub>3</sub>CN/H<sub>2</sub>O = 90/10, v/v)  
B) 10 mM HCOONH<sub>4</sub> in H<sub>2</sub>O

### Analyte:

1. Quinic acid 1,000 mg/L  
2. Caffeic acid 100 mg/L  
3. Caffeine 50 mg/L  
4. Chlorogenic acid 100 mg/L

Time (min)	A (Vol%)	B (Vol%)
0.0	2	98
10.0	40	60

**Flow Rate** : 0.3 mL/min  
**Col. Temp.** : 40 °C  
**Detection** : UV 215 nm  
**Injection Vol.** : 1  $\mu$  L  
**Sample** : Standard