

Africa Parts Group

4000 sqm Head Office in Johannesburg, home to APG Automotive, APG Commercial and APG Industrial

Our Facility



Our Offices



Our Warehouse



Our Warehouse





Our Business

Our Brands



Our Markets

- Passenger Vehicle
- Light Commercial Vehicle

Our Categories

- Ignition Parts
- Fuel Parts
- Cooling Components
- Wheel Bearings
- Sensors
- Switches and Senders
- Shock Absorbers
- Permatex Products
- Instrumentation
- Actuators
- Visibility Systems
- Auto Electrical **New**
- Filters **New**
- Belts & Tensioners **New**



Proudly owned by APG

Household brand in South African workshops

Over 75 years of brand pedigree in Automotive Aftermarket

Product ranges include

- Ignition Components
- Fuel Components
- Cooling Components
- Switches & Senders
- Sensors
- Wheel Bearings
- Auto Electrical



Premium quality sealants and adhesives

More than 100 years of quality and innovation

OEM specified products

No 1 selling brand in this category in the USA



OE Platform Development

Latest Manufacturing technologies to ensure optimum performance

Rugged components are ideal for tough environments

Direct replacement to original part

Range of products and parts to cover all market segments

Worldwide distribution network



South Africa's No 1 Shock Absorber Brand

Over 100 Years of supplying shocks

Wide product range of products for the South Africa and African market

Shock Absorbers

Struts

Gas Lifts



VDO is today one of the world's leading automotive suppliers and one of the largest providers of parts and services for passenger cars and commercial vehicles.

The company has been a byword for progressive electronic and mechatronic solutions since the birth of the automobile.

Our Product Categories

Cooling



- Radiator Caps
- Thermostats
- Water Pumps

Switches & Senders



- Pressure
- Temperature
- Tank level
- Fan
- Indicator
- Head Light
- Tail Light
- Clutch Control
- Cruise Control

Sensors



- Mass Airflow
- MAP
- CAM and crankshaft
- Wheel Speed
- Knock
- Oxygen/NOX

Ignition



- Points
- Condensors
- Rotors
- Distributor Caps
- Ignition Coils
- Glow Plugs **New**
- Spark Plugs **New**
- Ignition Leads **New**

Fuel Systems



- Fuel Pumps
- Fuel Feed Units
- Carburettor Kits
- Fuel Injectors
- Fuel Caps
- Oil Caps

Wheel Bearings



- Wheel Bearing Kits
- Hub Units

Our Product Categories

Actuators



- Throttle Actuators
- Idle Control Actuators
- EGR Valves

Instrumentation



- Tachometers
- Hour meters
- Ammeters
- Voltmeters
- Tank level gauges
- Pressure gauges
- Speedometers
- Temperature Gauges
- Clocks

Windshield Systems



- Washer Pumps
- Washer Nozzles
- Washer Kits

Shocks



- Shock Absorbers
- Strut Mounts
- Gas lifts

Our Product Categories - NEW

Auto Electrical



- Alternators
- Starters

Filters



- Fuel Filters
- Oil Filters
- Air Filters
- Cabin Filters

Belts & Tensioners



- V-Belt
- Timing Belts
- Poly Belts
- Tensioner Kits

Our Product Categories

Gasketing



- Gasket Makers
- Anaerobic Gasket Makers
- Gasket Sealants
- Gasket Removers

Thread Compounds



- Thread Lockers
- Thread Sealants

Stop Leaks



- Head Gasket Repair
- Oil Stop Leaks
- Power Steering Leaks
- Radiator Repair

Adhesives & Sealants



- Epoxies
- Adhesive Sealants
- Spray Adhesives
- Super Glues
- Adhesive Removers
- Weatherstrip Adhesives

Hand Care



- Fast Orange
- Wipes
- Hand Care
- Extended Line

Lubricants



- Anti-Seize Lubricants
- Specialty Lubricants
- Brake Lubricants

Maintenance & Repair

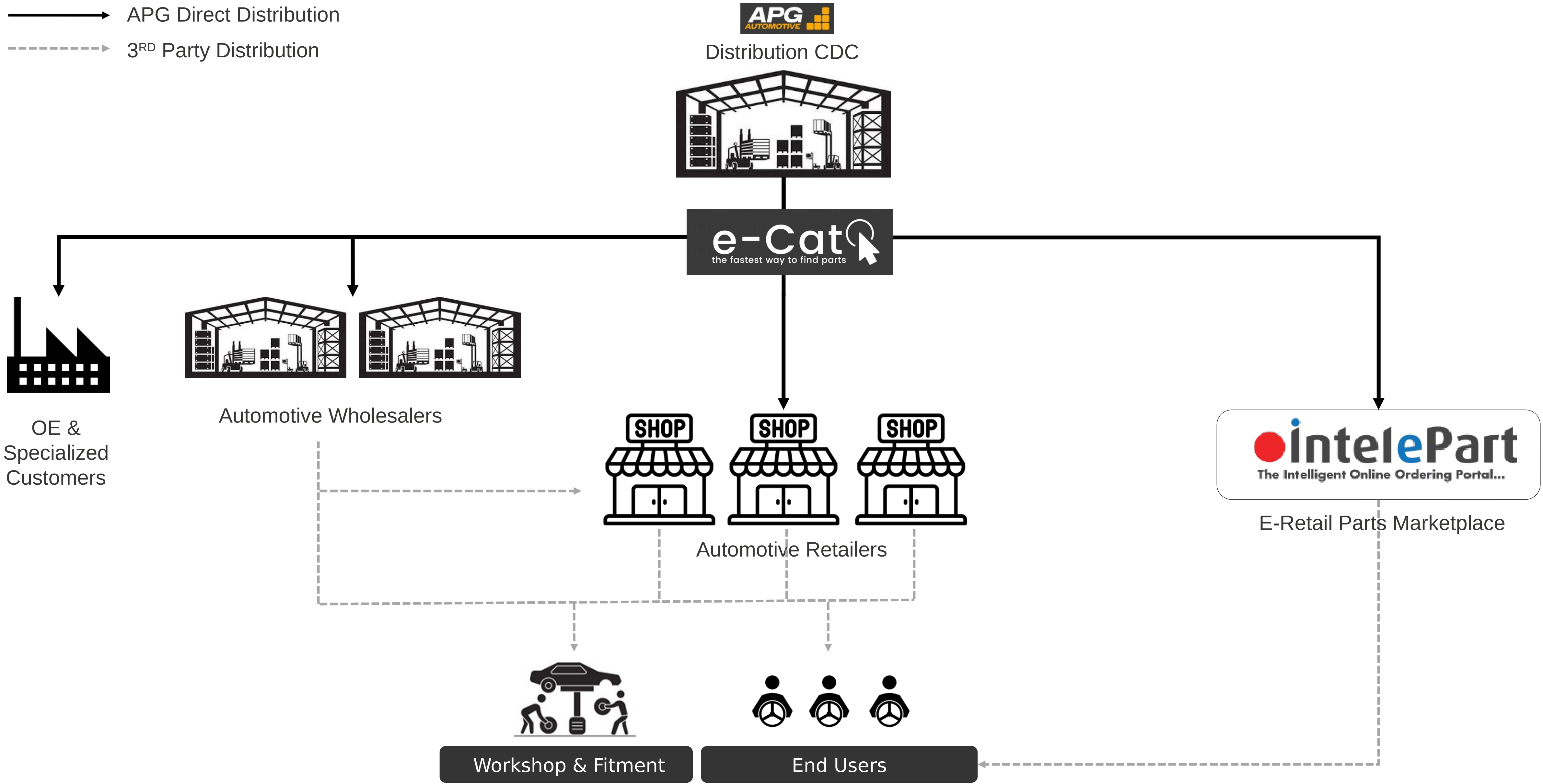


- Body & Under Bonnet
- Brake Repair
- Body Repair
- Rust Treatment
- Repair Kits
- Rebuilders Aid

Our Distribution



—————> APG Direct Distribution
-----> 3RD Party Distribution



Our Geographic Reach

▲ National Distribution – South Africa

● Export Territories

- Namibia
- Botswana
- Mozambique
- Zimbabwe



E-Cat Catalogue & E-Commerce system



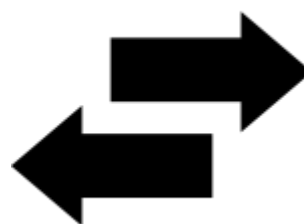
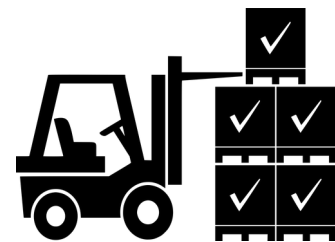
On-Line Catalogue

A full featured B2B on-line catalogue & ordering systems with data and images, features & benefits



Live SOH and Pricing

Live SOH and live channel pricing per customer.



Cross References

More than 1.7m cross references currently catalogued in the system



Vehicle Applications

+ 11 500 different vehicles cross referenced to parts basket



Search Engine

Fastest search engine in the Industry 0.2s



Quick Orders

Quick Order Screen



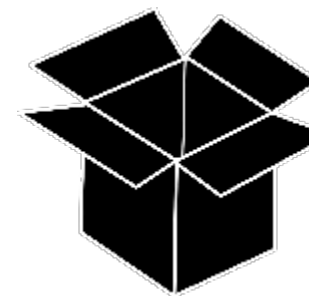
Call centre backed

Help is a call away to either help the user use the system or process an order on their behalf. Whatsapp enabled.



6 000 Parts

+ 6 000 parts on the e-Commerce platform



My Lists

Custom build lists, Favorites, Weekly/Monthly Orders



My Account Suite

Fully Integrated B2B account suite, Order Tracking, Statements, POD, Invoices





**National Sales Manager
Leanne Saunders**

Email: leanne.saunders@apgautomotive.co.za
Office Phone: +27 (11) 627 2501/2
Mobile: +27 68 908 3568



**Internal Sales & Support
Ralph Morgan**

Email: ralph.morgan@apgautomotive.co.za
Office Phone: +27 (11) 627 2501/2
Mobile: +27 63 902 1020



**Internal Sales & Support
Basil James**

Email: basil.james@apgautomotive.co.za
Office Phone: +27 (11) 627 2501/2
Mobile: +27 68 938 0260



**Internal Sales & Support
Micheal Naidoo**

Email: micheal.naidoo@apgautomotive.co.za
Office Phone: +27 (11) 627 2501/2
Mobile: +27 68 608 1500

Contact Us



Address

Unit D , Pomona Precinct , 300 Elgin Road
Pomona , South Africa

Contact Info

Email: info@apgautomotive.co.za
Web: www.apgautomotive.co.za

Telephone

Office Phone: +27 (11) 627 2500





ECHLIN®
PREMIUM AUTOMOTIVE PARTS



- 1949 Hyalco Manufacturing started
- 1972 Echlin Inc. acquired 92% of Echlin Manufacturing (Pty) Ltd (Hyalco)
- 1977 ACSA was founded as a distributor of Echlin
- 1979 S.A.E.C was acquired
- 1985 Motorola was acquired
- 1995 ACSA and Echlin was formed into one entity, ACSA-Mag
- 1996 PJ Manufacturing was acquired
- 1999 Dana acquired 100% of the shares
- 2007 Control Instruments acquires Dana
- 2014 Torre Acquires Control Instrument
- 2019 APG Acquires Torre



197



197



199



200



201

Cooling



- Radiator Caps
- Thermostats
- Water Pumps

Switches & Senders



- Pressure
- Temperature
- Tank level
- Fan
- Indicator
- Head Light
- Tail Light
- Clutch Control
- Cruise Control

Sensors



- Mass Airflow
- MAP
- CAM and crankshaft
- Wheel Speed
- Knock
- Oxygen/NOX

Ignition



- Points
- Condensors
- Rotors
- Distributor Caps
- Ignition Coils
- Glow Plugs *
- Spark Plugs *
- Ignition Leads *

Fuel Systems



- Fuel Pumps
- Fuel Feed Units
- Carburettor Kits
- Fuel Injectors
- Fuel Caps
- Oil Caps

Wheel Bearings



- Wheel Bearing Kits
- Hub Units

Auto Electrical



NEW



- Alternators
- Starters

Filters



NEW



- Fuel Filters
- Oil Filters
- Air Filters
- Cabin Filters

Belts & Tensioners



NEW



- V-Belt
- Timing Belts
- Poly Belts
- Tensioner Kits

Thermostats

- No of References: 495
- New Releases : 208



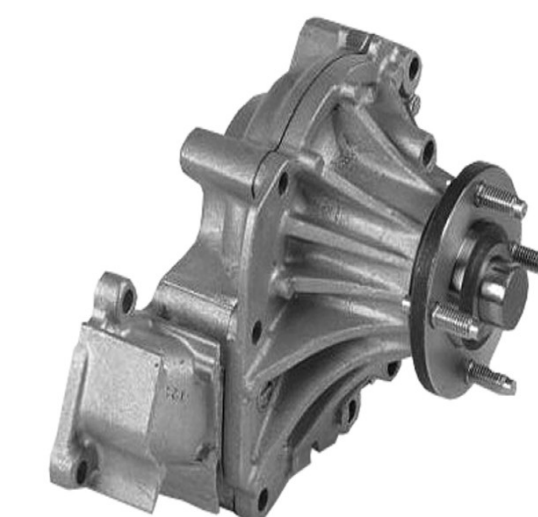
Radiator & Expansion Tank Caps

- No of References: 83
- New References : 3



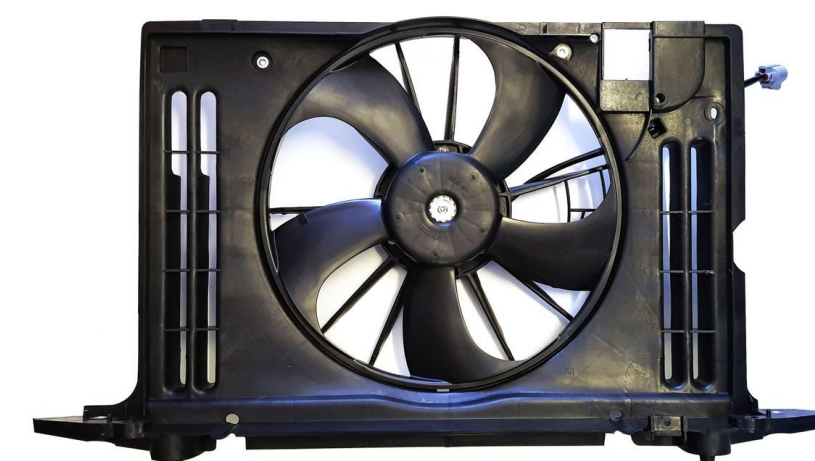
Water Pumps

- No of References: 1380
- New Releases : 927



NEW Radiator Fans (New)

- No of References: 0
- New Releases : New



Carburettor Kits

- No of References : 128
- New References : 0



Fuel Pumps, Feed Units & Regulators

- No of References : 380
- New References : 135



Fuel & Oil Filler Caps

- No of References : 85
- New References : 9



NEW Fuel Injectors (New)

- No of References : 0
- New References : NEW



Points & Condensors

- No of References : 64
- New References : 0



Rotors, Leads and Distributors Caps

- No of References : 206
- New References : 0



Ignition Coils and Modules

- No of References : 514
- New References : 245



NEW Glow Plugs & Spark Plugs (New)

- No of References : 0
- New References : NEW



Oil Pressure

- No of References : 166
- New References : 28



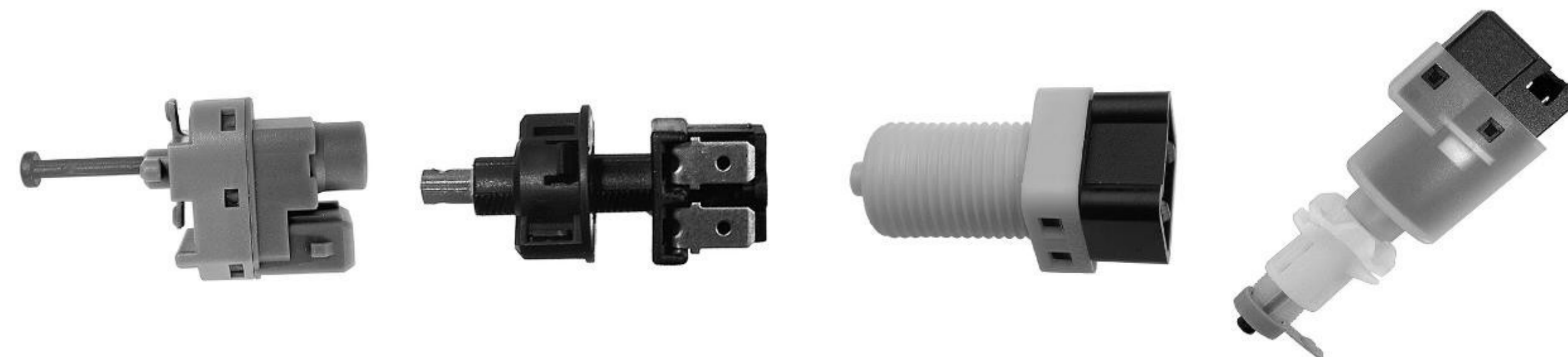
Temperature

- No of References : 322
- New References : 82



Stop Light

- No of References : 179
- New References : 78



Reverse Light

- No of References : 147
- New References : 52



Clutch & Cruise Control

- No of References : 43
- New References : 33



Indicator / Steering Column Switches

- No of References : 22
- New References : 12



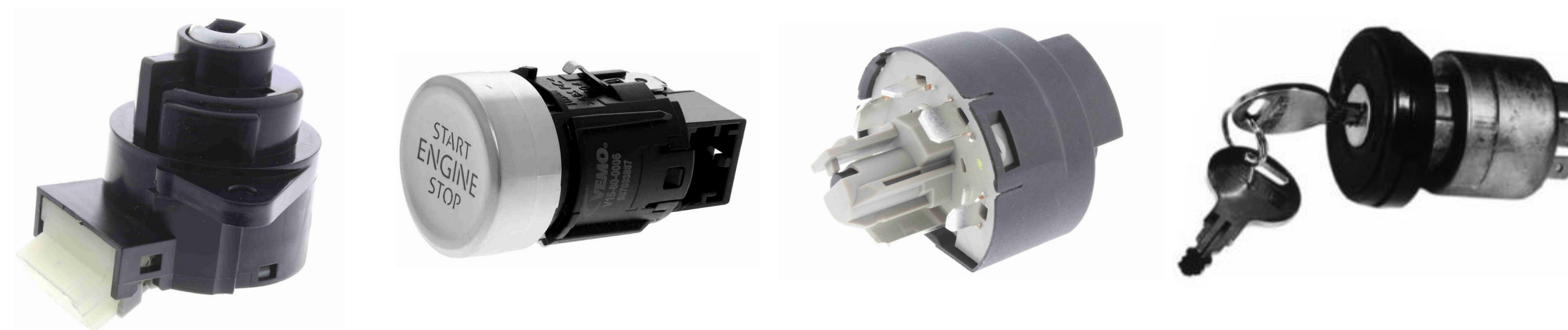
Fan Switches

- No of References : 138
- New References : 42



Ignition Switches

- No of References : 18
- New References : 0



General Switches

- Rocker
- Toggle
- Push Button



Tank Level Senders

- No of References : 318
- New References : 0



Oxygen Sensors

- No of References : 683
- New References : 124



CAM & Crankshaft Sensors

- No of References : 37
- New References : 12



Wheel Speed Sensors

- No of References : 191
- New References : 52



MAP Sensors (Air Pressure)

- No of References : 191
- New References : 56



MAF Sensors (Mass Air Flow)

- No of References : 149
- New References : 47



Knock Sensors

- No of References : 124
- New References : 24



EGT Sensors (Exhaust Gas Temp)

- No of References : 4
- New References : 0



DPS Sensors (Differentiation Pressure)

- No of References : 33
- New References : 5



Air Temperature Sensors

- No of References : 25
- New References : 8



Engine Oil Level Sensors

- No of References : 12
- New References : 2



Throttle Position Sensors

- No of References : 30
- New References : 11



Other Sensors

- High Pressure Sensors
- Rudder Angle Sensors
- CKP/CMP Sensors



Wheel Bearing Kits

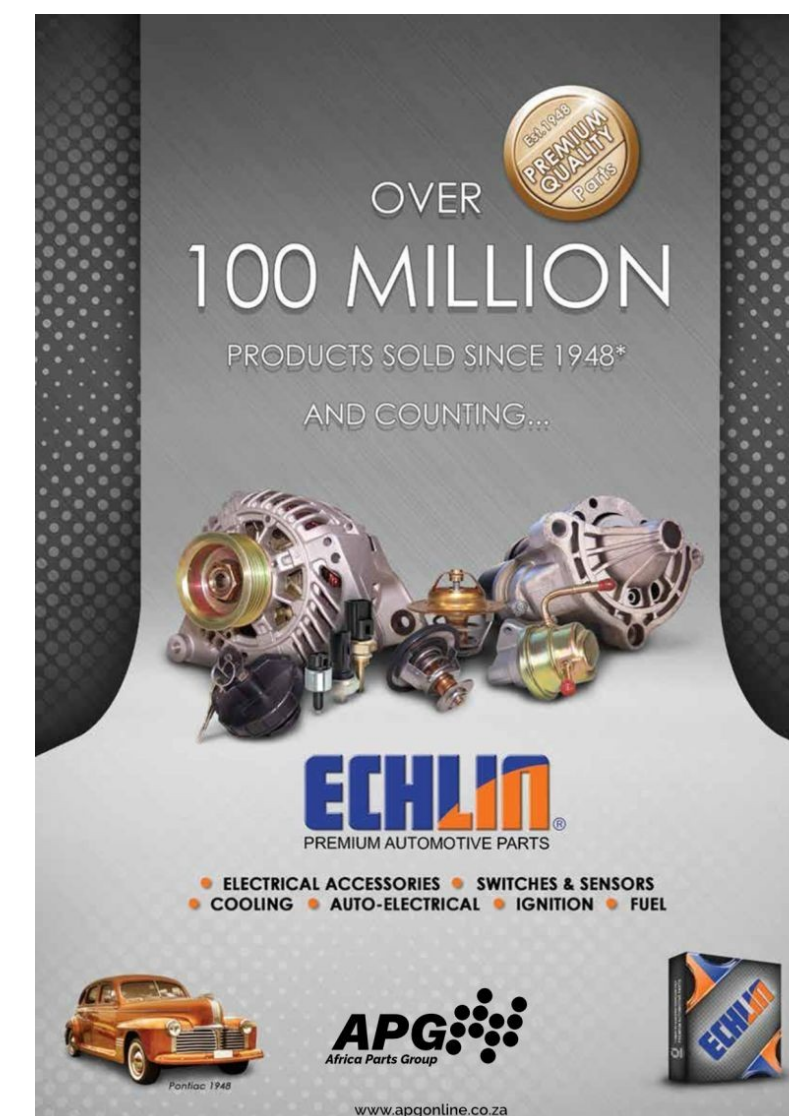
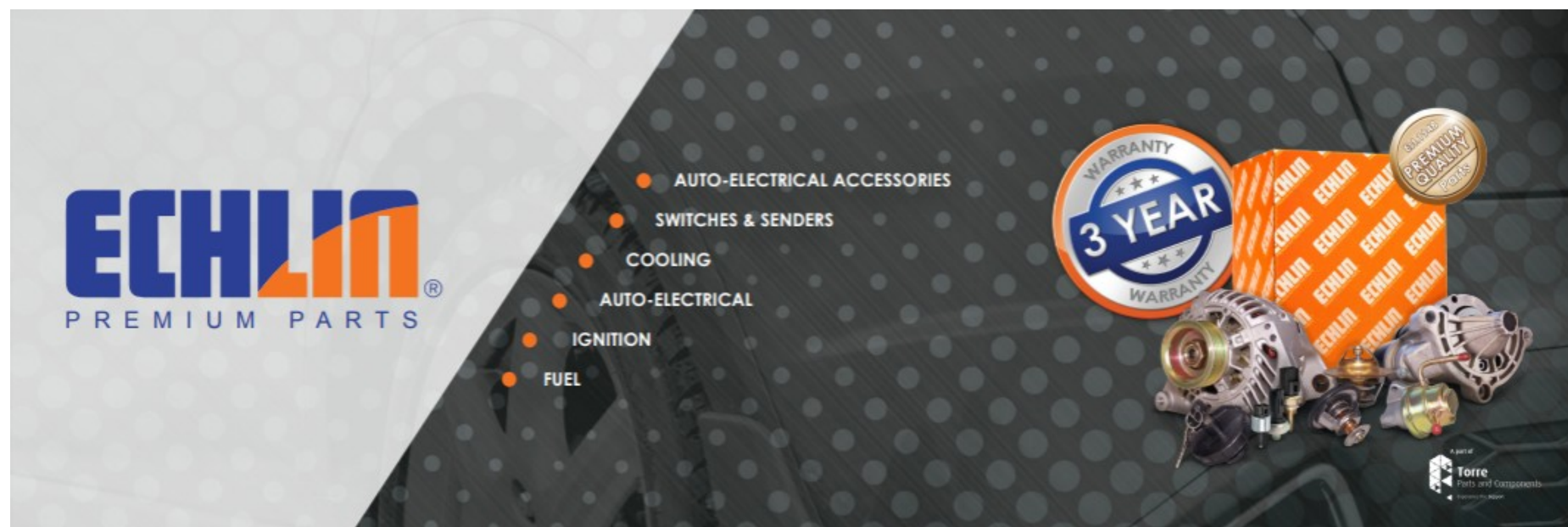
- No of References : 686
- New References : 214



Hub Units

- No of References : 85
- New References : 10





Signage available in custom sizes

- Window
- Door
- Light Box

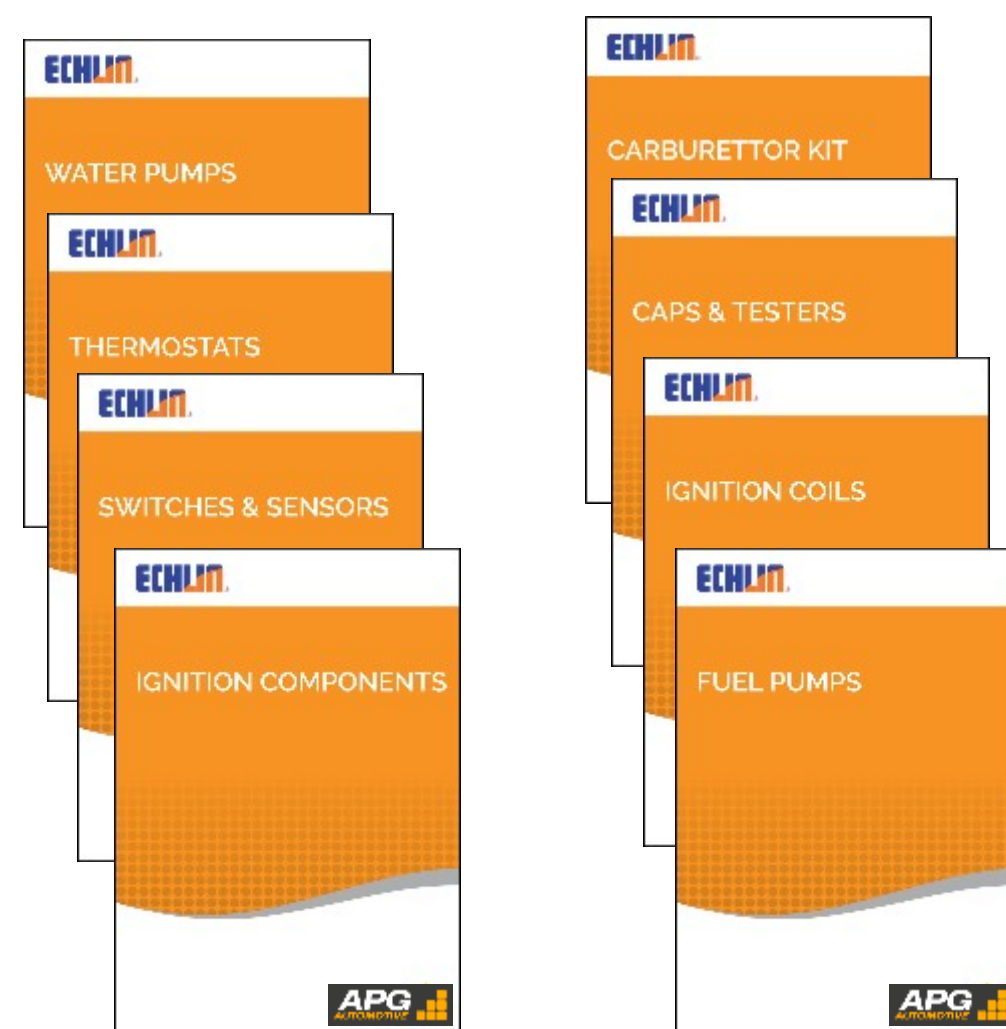
Echlin Signage catalogue now available

Merchandise



- Range of merchandise available for in store and counter sales promotions

Catalogues



- Echlin Binder available to store all your printed catalogues
- Catalogue by vehicle, parts finder
- E-Cat also available for easy access to full digital catalogue

Echlin Stock Bins



- Echlin Orange Bin Boxes
- Available for new ranges being stocked by a retailer
- Let our team range a new category in your store and provide you with Echlin bin boxes to store the product

E-Cat



- E-Cat available to find every Echlin product
- Cross references by Aftermarket and OE Number
- Vehicle search
- Detailed specifications of each part
- Images, Data sheets, Specifications, Fitment instructions

Contact Us

ECHLIN
PREMIUM AUTOMOTIVE PARTS



Address

Unit D , Pomona Precinct , 300 Elgin
Road
Pomona , South Africa

Contact Info

Email: info@apgautomotive.co.za
Web: www.apgautomotive.co.za

Telephone

Office Phone: +27 (11) 627 2500





Gasketing



- Gasket Makers
- Anaerobic Gasket Makers
- Gasket Sealants
- Gasket Removers

Thread Compounds



- Thread Lockers
- Thread Sealants

Stop Leaks



- Head Gasket Repair
- Oil Stop Leaks
- Power Steering Leaks
- Radiator Repair

Adhesives & Sealants



- Epoxies
- Adhesive Sealants
- Spray Adhesives
- Super Glues
- Adhesive Removers
- Weatherstrip Adhesives

Hand Care



- Fast Orange
- Wipes
- Hand Care
- Extended Line

Lubricants



- Anti-Seize Lubricants
- Specialty Lubricants
- Brake Lubricants

Maintenance & Repair



- Body & Under Bonnet
- Brake Repair
- Body Repair
- Rust Treatment
- Repair Kits
- Rebuilders Aid

Radiator Repair Leak

Permatex® Radiator Repair Stop Leak

- Reduces need to top off fluid due to mild corrosion
- No Draining or Flushing
- One-Step Process
- Anti-Clog Formula



The Permatex Radiator Repair flows through the heater core without restriction and plugs pinhole leaks reducing engine overheating and frequently adding coolant. Corrosion of cooling system components causes pinhole leaks and can lead to engine overheating and the need to frequently add coolant.

Head Gasket Repair Leak

Permatex® Head Gasket Repair Stop Leak

- ASTM D3147, D6107 and D1881 Approved
- Heat Syncing Formula
- One-Step Process
- No Draining or Flushing
- Anti-Clog Formula



The Permatex Head Gasket Repair is designed to seal pinhole leaks 2x faster and prevent coolant, oil and other fluids from mixing with each other. Leaks in head gaskets cause loss of engine power, overheating and excess coolant consumption.

Engine Oil Stop Leak

Permatex® Engine Oil Stop Leak

- Works on all gas, hybrid and diesel engines
- Eliminates exhaust smoke due to burning oil
- Conditions o-rings and seals to prevent cracking and future leaks
- No Draining or Flushing
- Anti-Clog Formula



Permatex Engine Oil Stop Leak increases viscosity of engine oil and conditions, softens and expands rubber components. Brittle seals and gaskets allow oil to seep from the engine and cause deposit formations and dark exhaust smoke.

Power Steering Repair Leak

Permatex® Power Steering Repair Stop Leak

- Quiets Noisy Power Steering Pumps
- Improves Steering Response
- One-Step Process
- No Draining or Flushing
- Anti-Clog Formula



Permatex Power Steering Repair stops leaks, increases fluid viscosity while conditioning and protecting rubber components, reducing cracking and future leak points. Leaky fluids and low levels cause squealing and squeaking

Body and Under Bonnet

- Under Coating, Engine Degreaser, Weatherstrip Cement
- Battery Protector, Battery Cleaner, Throttle & Choke Cleaner, Radiator Cleaner



Brake & Parts

- Brake & Parts Cleaner
- Electrical & Contact Cleaner



Exhaust Repair

- Muffler & Tailpipe Sealant & Putty
- Muffler & Tailpipe Bandage



Rebuilders Aid

- Prussian Blue
- Valve Grinding Compound



Repair Kits

- Wheel Restorations Kits
- Windscreen & Vinyl Repair Kits



Rust Treatments

- Rust Treatments
- Rust Dissolver Gel



Gasket Makers

- Black Gasket Makers
- Red Gasket Makers
- Grey Gasket Makers



Gasket Sealants

- Gasket Dressings
- Spray On Gaskets
- Gasket Sealants



Anaerobic & Specialty Gasket Makers

- Anaerobic Gasket Makers
- Specialty Gasket Makers
- Applications : Transmission/Water Pumps/Thermostats



Gasket Removers

- Gasket Scraper
- Gasket Remover



Fast Orange

- Heavy Duty Hand Cleaner
- Pumice Hand Cleaner / Lotion
- Pro clean Hand Cleaner



Wipes

- Fast Orange Wipes
- Heavy Duty Scrubbing Towel



Extended Line

- Grease X – Laundry Detergent
- Grease X – Body Wash
- Repair Cream / Foaming Hand Wash



Permatex Hand Cleaners

- Mechanics Gloves
- Scrubs in a Bucket
- Grease Grabber



Blue Thread Lockers

- Medium Strength



Orange Thread Lockers

- High Strength



Red Thread Lockers

- High Strength
- High Temperature



Thread Sealants

- Pipe Joint Compounds
- Thread Compounds / Sealants / Bearing Mount



Additional Thread Compounds

- Bolt Mark
- Retaining Compounds



Epoxies & Syringe Adhesives

- Epoxy
- Plastic Weld / Steel Weld / Cold Weld



Adhesive Sealants

- Silicone Adhesives
- Windshield Glass Sealer



Spray Adhesives

- Leak Repair Spray / Headliner Adhesive
- All Purpose Spray



Super Glues

- Super Glue
- Ultra Bond Super Glue



Specialty Adhesives & Removers

- Fuel Tank Repair / Plastic Adhesive/Liquid Tape
- Contact Cement / Wrap it / Decal Remover / Metal Fill



Weatherstrip Adhesives

- Weather Strip Adhesives
- Weather Strip Cement



Anti Seize

- Chain Lube
- Belt Dressing
- Anti Seize Lubricants



Brake Lubricants

- Brake Parts Lubricants
- Ultra Lube / Ceramic Extreme
- Disc Brake Quiet



Specialty Lubricants

- Bulb Grease / Engine Assembly Lube
- Di Electric Tune Up Grease/ Lithium Grease
- Silicon Lubricants



<div>  GASKET MAKER SELECTOR CHART </div>													
SPECIALIZED		ULTRA		OPTIMUM			90 MIN			ONE MINUTE			
Product	Water Pump & Thermostat Silicone Gasket Maker	Gear Oil Gasket Maker	Ultra Black Gasket Maker	Ultra Grey Gasket Maker	Ultra Red Gasket Maker	Optimum Black Gasket Maker	Optimum Grey Gasket Maker	Optimum Red Gasket Maker	The Right Stuff 90min Black Gasket Maker	The Right Stuff 90min Grey Gasket Maker	The Right Stuff 90min Red Gasket Maker	The Right Stuff Black Gasket Maker	The Right Stuff Red Gasket Maker
Sizes/ Part number	22071 - .5oz TB 81184 - 5fl oz CT	81182 - 3oz TB	22072 - .5oz TB	22074 - .5oz TB	81630 - 3.35oz TB 81695 - 9.5oz PB 81624 - 13oz CT	27037 - 3.35oz TB 27137 - 9.5oz PB 27237 - 13oz CT	27036 - 3.35oz TB 27136 - 9.5oz PB 27236 - 13oz CT	27038 - 3.35oz TB 27138 - 9.5oz PB 27238 - 13oz CT	25228 - 3oz TB	34328 - 3oz TB	34628 - 3oz TB	25229 - 3oz PC Carded 29208 - 5oz CT 85224 - 7.5oz PB 33694 - 10oz CT	25238 - 3oz PC Carded 34311 - 5oz CT 34423 - 5oz CT 85144 - 7.5oz PB 34310 - 10oz CT 34424 - 10oz CT
Temp Range	-65°F to 500°F Intermit	-65°F to 500°F Intermit	-65°F to 500°F Intermit	-65°F to 500°F Intermit	-65°F to 650°F Intermit	-75°F to 500°F Intermit	-75°F to 700°F Intermit	-90°F to 750°F Intermit	-65°F to 500°F Intermit	-65°F to 500°F Intermit	-65°F to 650°F Intermit	-75°F to 450°F Intermit	-75°F to 450°F Intermit
Sensor Safe	YES	YES	YES	YES	YES	YES	YES	YES	YES	YES	YES	YES	YES
Applications	Water-Clycol (Antifreeze) Water Pump & Thermostat Housings	Gear oil, Manual Transmissions Differentials, Transfer Cases	Heavy Duty Oil Older Domestic Vehicles, Oil Pans, Oil Pumps, Valve Covers, Timing Covers	High Torque, High Vibration Import & Newer Domestic Vehicles, Intake Manifolds, Thermostat Housings	High-Temp Exhaust Manifold or Header Flanges, Exhaust Flange or Slip Fit Joints, EGR Valves, Turbo Flanges, Heat Riser Tube Flanges	Max Flex and Oil Resistance Newer Lightweight & Premium Components, Oil Pans, Timing Covers	Max Torque & Vibration High Performance Components, Exhaust Manifolds, Intake Manifolds	Max Temp Exhaust Manifold or Header Flanges, Exhaust Flange or Slip Fit Joints, EGR Valves, Turbo Flanges, Heat Riser Tube Flanges	90 Minute Return to Service Valve Covers, Intake Manifolds, Coolant Flanges, Oil Pans, Timing Covers, Heavy-Duty Truck & Fleet	90 Minute Return to Service Valve Covers, Intake Manifolds, Coolant Flanges, Oil Pans, Oil Pumps, Timing Covers	90 Minute Return to Service Exhaust Manifold or Header Flanges, Exhaust Flange or Slip Fit Joints, EGR Valves, Turbo Flanges, Heat Riser Tube Flanges	Immediate Return To Service Automotive & Marine Gaskets, Older Domestic Vehicles, oil pans, oil pumps, valve covers, timing covers	Immediate Return To Service Automotive & Marine Gaskets, Older Domestic Vehicles, oil pans, oil pumps, valve covers, timing covers Exhaust Manifold or Header Flanges, Exhaust Flange or Slip Fit Joints, EGR Valves, Turbo Flanges, Heat Riser Tube Flanges
Replaces					Replaces previous gen. Red			Replaces Ultra Copper 81878					

PX-0766

<div>  EPOXY SERIES TOUGH BONDS FOR TOUGH JOBS </div>								
	1 MINUTE GEL EPOXY	5 MINUTE GEL EPOXY	2 TON EPOXY	BLACK PLASTIC WELDER	MARINE H2 HOLD EPOXY	STEEL WELD™ EPOXY	500° HIGH HEAT EPOXY	CELLULOSE WOOD EPOXY
Best For:	<ul style="list-style-type: none"> General Purpose No-Clamp NO-DRIP GEL Blue Dye disappears when mixed 	<ul style="list-style-type: none"> General Purpose No-Clamp NO-DRIP GEL Blue Dye disappears when mixed 	<ul style="list-style-type: none"> Bonds together rigid materials High clarity and impact strength Gap-filling and non-shrinking 	<ul style="list-style-type: none"> Structural Adhesive Ideal for plastics and composites Resists weathering & humidity 	<ul style="list-style-type: none"> Flexible Water-Proof Adhesive Sticks and Cures Underwater Shock & Vibration resistant 	<ul style="list-style-type: none"> Steel reinforced epoxy Eliminates welding & brazing Ideal for metal to metal 	<ul style="list-style-type: none"> Up to 500F Underhood and Automotive Applications Chemical resistant 	<ul style="list-style-type: none"> Ideal for wood bonding & repair jobs Non-foaming formula Strong lasting bond
Strength:	2500 psi	3400 psi	4000 psi	3500 psi	4000 psi	Permanent Strength up to 4500psi	Up to 800 psi	2000 psi
Set Time:	1 min	5 min	30 min	5 min	15 min	5 min	10 min	5 min
Cure Time:	5 min	10 min	1 hour	10 mins	1 hour	1 hour	2 hours	1 hour
Finished Color:	Clear	Clear	Clear	Black	Off-white	Metallic Grey	Clear	Tan
Bonds to:	Metals Hard Plastics Ceramics Glass Rubber And more..	Metals Hard Plastics Ceramics Glass Rubber And more..	Ceramics Fiberglass Metal Concrete And more..	Hard Plastics Metal Fiberglass Chrome Ceramic	Fiberglass PVC Metal Wood Plastics And more..	Aluminium Brass Chrome Copper Stainless Steel And other metals..	Metals Hard Plastics Ceramics Glass Rubber And more..	Furniture Doors Windows Trim / Molding Decks

Threadlocker SELECTOR CHART

THREADLOCKERS

2-in-1 Compound

THREAD SEALANTS

PRODUCT	PURPLE Low Strength Threadlocker	BLUE Medium Strength Threadlocker	BLUE Surface Insensitive Threadlocker	ORANGE High Strength Removable Threadlocker	RED Permanent Strength Threadlocker	RED High Strength Threadlocker	RED High Temperature Threadlocker	GREEN Penetrating Grade Threadlocker	Seal & Lock Thread Compound	High Performance Thread Sealant	High Temperature Thread Sealant	
SIZES PRODUCT #	6 ml - #24024	6 ml - #24200 36 ml - #24240 90 ml - #24283 2.5 ml - #24206 10 ml - #24210 50 ml - #24250 <i>Gel</i> Use Gel for Overhead Applications 5g GEL - #24005 10g GEL - #24010	6 ml - #24027 10 ml - #24300	10 ml - #25210	36 ml - #26240	6 ml - #27100 36 ml - #27140 90 ml - #27183 10 ml - #27110 50 ml - #27150 <i>Gel</i> Use Gel for Overhead Applications 5g GEL - #27005 10g GEL - #27010		6 ml - #24026 10 ml - #27200 36 ml - #27240	6 ml - #29000 36 ml - #29040	35 ml - #57535	50 ml - #56521	6 ml - #59214 50 ml - #59235
FASTENERS/ FITTINGS	#2 to 1/4" (2.2 - 6mm)	1/4" to 3/4" (6 - 20mm)	1/4" to 3/4" (6 - 20mm)	1/4" to 1" (10-25mm)	3/8" to 1" (10 - 25mm)	3/8" to 1" (10 - 25mm)	3/8" to 1 1/2" (10 - 25mm)	#2 to 1/2" (2.2 - 12mm)	1/4" to 3/4" (6 - 20mm)	Up to 2" (50mm)	Up to 2" (50mm)	
BREAKAWAY/ PREVAILING TORQUE, IN-LB	55/20	115/50	180/60	160/180	190/275	250/250	200/225	65/225	80/N/A	N/A	N/A	
TEMPERATURE RANGE	-65°F to +300°F (-54°C to +150°C)	-65°F to +300°F (-54°C to +150°C)	-65°F to +300°F (-54°C to +150°C)	-65°F to 300°F (-54° to 150°C)	-65°F to +300°F (-54°C to +150°C)	-65°F to +300°F (-54°C to +150°C)	-65°F to +450°F (-54°C to +232°C)	-65°F to +300°F (-54°C to +150°C)	-60°F to +300°F (-51°C to +150°C)	-65°F to +300°F (-54°C to +150°C)	-65°F to +400°F (-54°C to +204°C)	
APPLICATIONS	Small mounting screws, throttle body assembly, choke assembly, interior panel screws and light duty requirements	Valve cover bolts, water pump bolts, oil pan bolts, drive shaft bolts, carburetor studs	Rocker studs, rocker adjustment bolts, disc brake caliper slide bolts, intakes, alternator and pulley assemblies	Case half bolts, triple tree fasteners, fly wheel bolts, stator bolts, axle nuts, dirt bikes, heavy-duty construction, power tools, lawn and garden	Ring gear bolts, transmission shaft bolts, strut or shock hardware, control arm hardware	Threaded and slip fit joints, cylinder block and rocker arm studs, ring gear bolts, transmission and shaft bolts, strut or shock hardware, control arm hardware and many motorcycle applications	Camshaft sprocket bolts, crankshaft bolts, idler bearings, transmission input and output shaft threads and heavy duty applications	Preassembled fasteners, instrument screws, carburetors, adjustment screws	Threaded freeze plugs, oil pressure sensor, fuel line supply nuts and bolts, fuel injector, coolant temperature sensor, power steering cooler lines, brake master cylinder line nuts, A/C systems, plumbing systems	Steel fittings, head bolts into through holes, oil PSI sending units/sensors, oil and coolant lines, intake manifold switches, rear axle fill plug, fuel fittings	Head bolts into through holes, oil PSI sending units/sensors, oil and coolant lines, fuel fittings, rear axle fill plug, fuel power steering fittings	

© 2010 ITW Permatex. All rights reserved. PX-0716



ANTIBACTERIAL FOAMING HAND WASH

GENTLE ENOUGH FOR EVERYDAY USE
Gentle on skin but effective
Mild formulation for smoother feeling hands

HELPS KILL HARMFUL GERMS
Contains antibacterial ingredients
Regular hand washing is the best way to stay healthy

FRESH SCENT
Neutral fresh scent for broad appeal

MORE PROFESSIONAL FAST ORANGE HAND CLEANING PRODUCTS AND ACCESSORIES.



Item #	Description	Case Pack	Case Dimensions	Case Cube	Item UPC Prefix 6 86226
95105	FO ANTIBACTERIAL FOAMING HAND WASH	12	10.875"L x 8.00"H x 7.625"W	0.384	6 86226 95105 2
25050	FAST ORANGE WIPES 25 CT	8	10.125"L x 8.500"H x 6.00"W	0.299	6 86226 25050 6
25051	FAST ORANGE WIPES 72 CT	6	15.000"L x 11.250"H x 10.000"W	0.976	6 86226 25051 3
35406	PUMICE HANDCLEANER 4.5 LB	1	16.750"L x 8.500"H x 11.125"W	0.917	6 86226 35406 8
28192	35013 PUMICE HANDCLNR 28OZ	12	19.250"L x 5.500"H x 14.000"W	0.858	6 86226 28192 0
25219	PUMICE HANDCLEANER 1 GA	4	14.625"L x 11.250"H x 10.375"W	0.988	6 86226 25219 7
25217	PUMICE HANDCLEANER 64 FC	6	14.500"L x 8.500"H x 12.125"W	0.890	6 86226 25217 3
25122	FOPL ROCKER TOP 15 OZ	12	11.250"L x 8.875"H x 7.750"W	0.447	6 86226 25122 0
95140	UNIVERSAL PUMP SOAP DSPNR	1	6.625"L x 9.75"H x 5.375"W	0.201	6 86226 95140 3
23218	SMOOTH HANDCLEANER 1 GA	4	14.625"L x 11.250"H x 10.375"W	0.988	6 86226 23218 2
23217	FOSL 64 FO PMPBD	6	14.375"L x 8.875"H x 12.125"W	0.895	6 86226 23217 5
23122	FOSL ROCKER TOP 15 OZ	12	11.250"L x 8.875"H x 7.750"W	0.447	6 86226 23122 2

FAST ORANGE®

THE BEST CHOICE FOR WORKING HANDS EVERYWHERE



Permatex

Handed Square North, 31 Columbia Boulevard
Hartford, Connecticut 06105

Permatex and Orange are the trademarks of Permatex Inc. Copyright © 2017
Permatex, an Orange Inc. company. All rights reserved. PPS 0057

INTRODUCING FAST ORANGE XTREME

A new professional grade hand cleaner

PROVEN 10% GREATER CLEANING EFFICIENCY
Over Competitive Brands & Original Fast Orange

ADVANCED SKIN PROTECTING FORMULA

ODOR ELIMINATOR TECHNOLOGY

A new professional grade formulation delivering superior cleaning power, fast, with less residue, and without a lingering petroleum odor. Contains a concentrated odor neutralizer that counteracts the smell of gasoline, oil, and other common odors. Advanced skin protection formula with premium skin conditioners: aloe vera, glycerin, lanolin, vitamin E, jojoba oil.

GREASE X MECHANIC'S LAUNDRY DETERGENT

REMOVES AUTOMOTIVE STAINS & SOILS
ELIMINATES FUEL, OIL & EXHAUST ODORS
KEEPS WASHER CLEAN OF RESIDUAL GREASE

NO SEPARATE PRETREATER NEEDED
HELPS REPEL FUTURE STAINS
SAFE FOR ALL FABRICS AND SEPTIC SYSTEMS

SOAP-INFUSED GRIME MAGNET

THIS SPECIAL FOAM WAS DESIGNED FOR INDUSTRIAL OIL SPILLS AND OIL SPILL CRISIS CLEANUP.

Features and Benefits:
Absorbs 14x its weight in petroleum products
Repels Water
No Mildew or Mold
Infused with the cleaning performance of Fast Orange pumice hand cleaner
Renewable plant-based foam
Long-lasting



Item #	Description	Case Pack	Case Dimensions	Case Cube	Item UPC Prefix 6 86226
25618	FAST ORANGE XTREME 1 GAL	4	14.625"L x 11.25"H x 10.375"W	0.988	6 86226 25618 8
25619	FAST ORANGE XTREME ULTRA CHERRY 1 GAL	4	14.625"L x 11.25"H x 10.375"W	0.988	6 86226 25619 5
25419	FAST ORANGE XTREME FRESH SCENT 1GAL	4	14.625"L x 11.25"H x 10.375"W	0.988	6 86226 25419 1
25616	FAST ORANGE XTREME ROCKER TOP 15 OZ	12	11.250"L x 8.875"H x 7.750"W	0.447	6 86226 25616 0

Item #	Description	Case Pack	Case Dimensions	Case Cube	Item UPC Prefix 6 86226
22340	FAST ORANGE GREASE X MECHANIC'S LAUNDRY DETERGENT 40 OZ BTL	6	10.875"L x 10.125"H x 10.375"W	.0661	686226223401
25106	FAST ORANGE SOAP INFUSED SPONGE	6	11.250"L x 8.875"H x 7.750"W	0.447	6 86226 25106 0



Contact Us



Address

Unit D , Pomona Precinct , 300 Elgin Road
Pomona , South Africa

Contact Info

Email: info@apgautomotive.co.za
Web: www.apgautomotive.co.za

Telephone

Office Phone: +27 (11) 627 2500





Be safe. Be sure

Gabriel®



- With its incredible history, Gabriel believes that there is not a single road in South Africa that they have not travelled upon ... we've been there and done that!
- Gabriel has a proud history of innovation and achievement stretching back to 1907 when Claude Foster – the automotive parts pioneer who founded Gabriel in Cleveland, Ohio, USA – developed and patented the first shock absorber called the “Snubber”.
- The company continued to prosper in the suspension business, pioneering many more firsts – the first hydraulic shocks (1918), adjustable shocks (1956 and 1967), position and velocity sensitive shocks (1979), gas-charged twin tube shocks (1983) and velocity sensitive technology for shocks and struts (1996).
- Gabriel first came to South Africa in 1935, importing all products from the US. Production in South Africa started in 1962 and sometime later, in 1984, Gabriel South Africa made its own contribution to Gabriel’s innovative history with the design and manufacturer of the “gas springs” which were promptly adopted by Gabriel plants worldwide.
- Gabriel products are distributed by APG through a network of retailers who ensure product gets to workshops and end consumers.



Gabriel GASRYDER



- Nitrogen Gas Pressured for dynamic response
- Ride Comfort and Control
- Cars, LCV, MPV, SUV

Gabriel FLEETRYDER



- Heavy Duty Commercial Shocks
- Big Bore Size 41 and 52 Diameter
- Ride Comfort and Control
- Heavy Commercial Vehicles and Fleet Applications

Gabriel SAFARI



- Heavy Duty Nitrogen Infused
- Big Bore Size Shock
- Ride Comfort and Control
- LCV, Heavy Duty Passenger, Taxi, MPV, SUV

Gabriel TECHNOMATIC



- Oil and Nitrogen Gas infused
- High Temperature Oil
- Hydraulic and Low Pressure
- Ride Comfort and Control
- Cars, LCV, MPV, SUV

Gabriel SAFARI HDP



- Heavy Duty Nitrogen Infused
- Big Bore Size Shock
- Designed for 4X4 and Heavy Duty Users
- SUV, 4X4, Light Commercial Applications

Gabriel GASLIFT



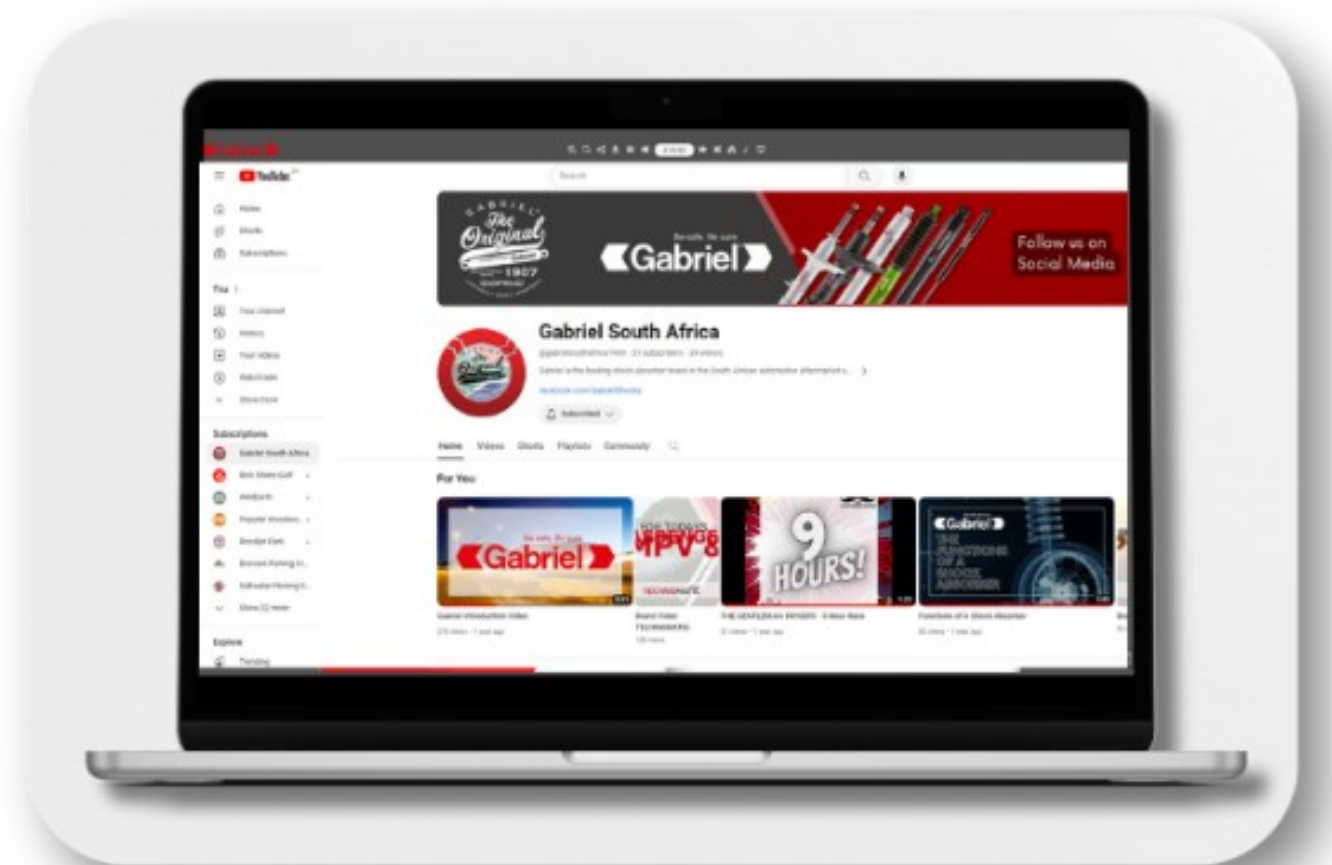
- Ø16 and Ø19 Bore working cylinder.
- Designed to be used to a pressure of up to 1000N(rod size applicable).
- Single lip rod seals.
- Sintered metal rod guides



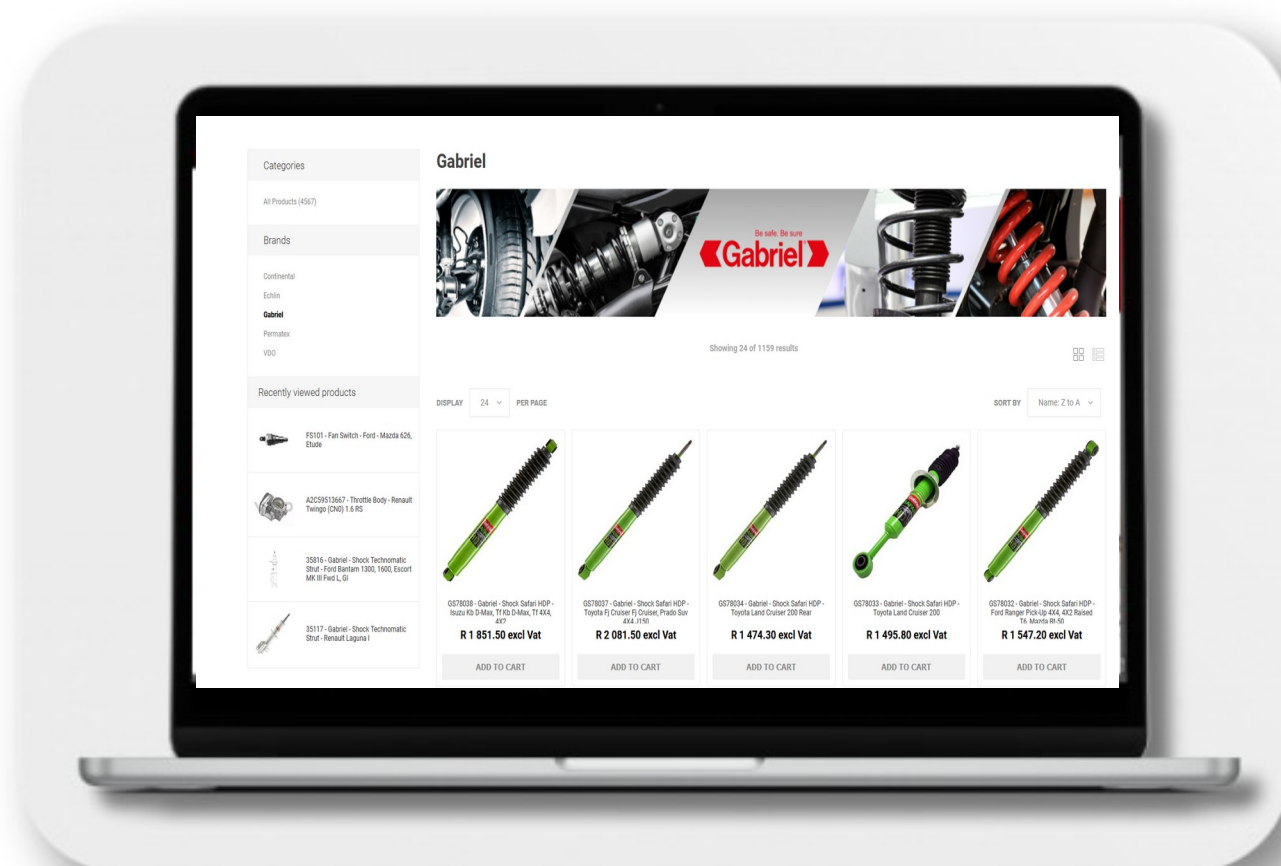
Catalogues



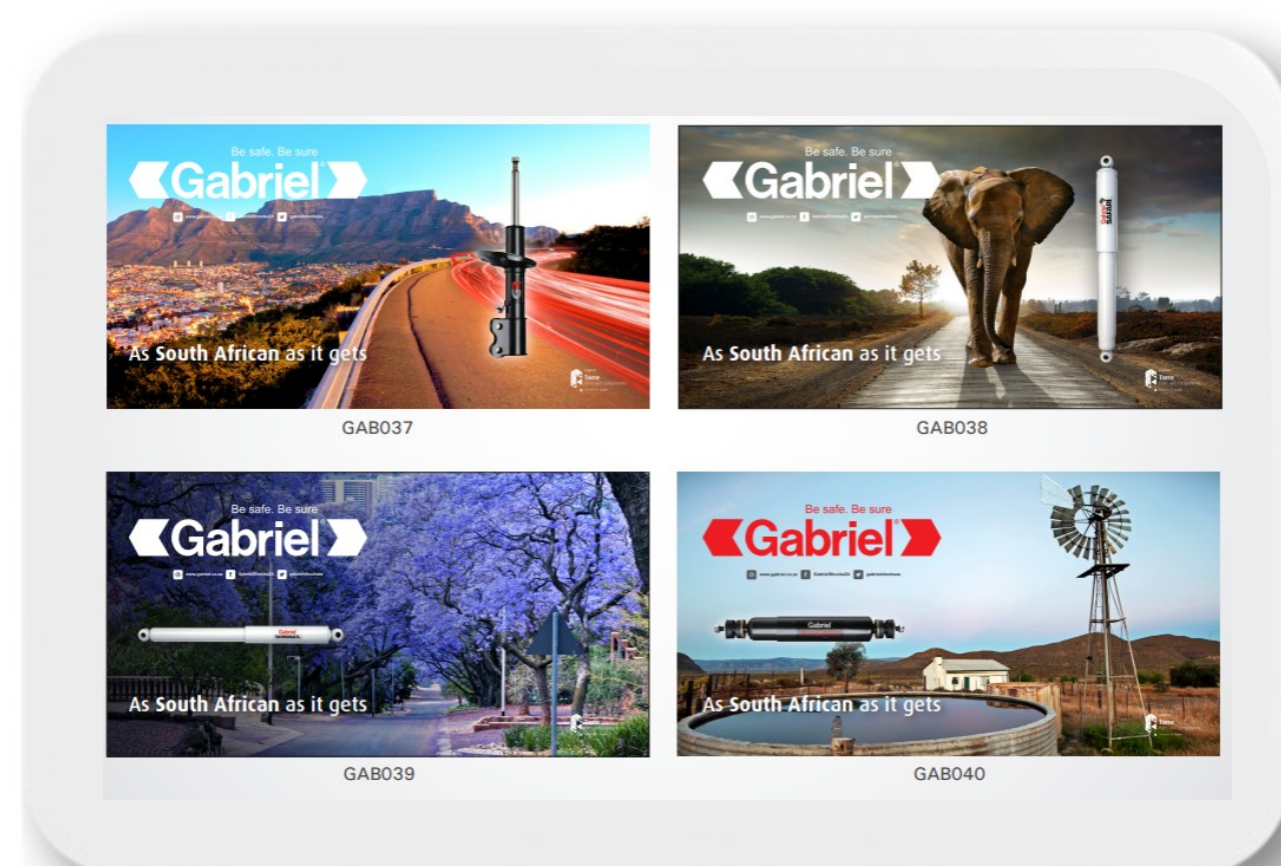
Merchandise



You Tube Channel



E-Cat On Line



Signage



Promotions

Contact Us



Address

Unit D , Pomona Precinct , 300 Elgin Road
Pomona , South Africa

Contact Info

Email: info@apgautomotive.co.za
Web: www.apgautomotive.co.za

Telephone

Office Phone: +27 (11) 627 2500



Continental

VDO

VDO is now Continental. Original stays Original.

As a global technology company and one of the leading automotive suppliers, we are the ideal partner for aftermarket solutions and services. Thanks to our broad portfolio and the top quality of an original equipment manufacturer, we always offer our customers real added value.

This bundled know-how represents our Continental brand – and therefore VDO original spare parts for electronics and mechatronics and VDO service tools are supplied in the new Continental packaging as part of the brand transfer. The products will of course be identical.

VDO

Original will always be original

VDO is now Continental



Continental 

Instrumentation



- Tachometers
- Hour meters
- Ammeters
- Voltmeters
- Tank level gauges
- Pressure gauges
- Speedometers
- Temperature Gauges
- Clocks

Switches & Senders



- Pressure senders
- Temperature senders
- Tank level senders
- Pressure switches
- Temperature switches
- Adapters and fittings

Sensors



- Mass airflow sensors
- MAP sensors
- Cam and crankshaft sensors
- Wheel speed sensors
- Knock sensors
- Oxygen/NOX sensors

Actuators



- Throttle Actuators
- Idle Control Actuators
- EGR Valves

Fuel Systems



- Common Rail Diesel Systems
- Fuel Injectors
- Wide Range of Fuel Pumps

Cooling Systems



- Electric Water Pumps

Wiper & Washer Systems



- Washer Pumps
- Washer Nozzles
- Washer Kits

VDO Cockpit International

- Range available for last 30+ Years
- Market coverage Automotive, Commercial and Off-Highway
- 52mm, 80mm and 100mm Variants
- Speedometers and Tachometers now discontinued



VDO SingleViu

- New Technology (Analogue and CAN)
- Market coverage Automotive, Commercial and Off-Highway
- 52mm, 80mm and 100mm Variants
- Fully customizable input settings to work with OE senders
- Standard connectors on all instrument sizes
- Customizable back light colors (White, Green, Red, Orange, Yellow)
- Programmable warning limits



Veratron Viewline

- Market coverage Marine and Off-Highway
- IP67 rating
- Analogue and CAN inputs
- Double lens configuration for marine use
- Suitable versions specific for marine applications (Rudder Angle, Trim Tilt, Sumlog etc.)



Pressure Senders

- Oil
- Water
- Air and Turbo/Boost pressure



Pressure Switches

- Engine Oil
- Hydraulic Oil
- Water and Brake Air pressure



Temperature Senders

- Engine Coolant
- Oil, & Air-Cooled engine
- EGT (Exhaust gas) and Ambient



Temperature Switches

- Engine Coolant
- Oil
- Hydraulic Oil



Tank Level Senders

- Tubular Type
- Lever Arm type
- Stainless Reed Switch



Oxygen Sensors

- No of References : 322
- New References : 158
- Vehicle Coverage : 4.75m vehicles (56%)



CAM & Crankshaft Sensors

- No of References : 165
- New References : 56
- Vehicle Coverage : 7.75m vehicles (86%)



Wheel Speed Sensors

- No of References : 0
- New References : 0
- Vehicle Coverage : 0m vehicles (0%)



MAP Sensors (Air Pressure)

- No of References : 165
- New References : 56
- Vehicle Coverage : 7.75m vehicles (86%)



Air Temperature Sensors

- No of References : 322
- New References : 158
- Vehicle Coverage : 4.75m vehicles (56%)



Engine Oil Level Sensors

- No of References : 165
- New References : 56
- Vehicle Coverage : 7.75m vehicles (86%)



Throttle Position Sensors

- No of References : 0
- New References : 0
- Vehicle Coverage : 0m vehicles (0%)



MAF Sensors (Mass Air Flow)

- No of References : 322
- New References : 158
- Vehicle Coverage : 4.75m vehicles (56%)



Knock Sensors

- No of References : 165
- New References : 56
- Vehicle Coverage : 7.75m vehicles (86%)



EGT Sensors (Exhaust Gas)

- No of References : 0
- New References : 0
- Vehicle Coverage : 0m vehicles (0%)



Other Sensors

- High Pressure Sensors
- Rudder Angle Sensors
- CKP/CMP Sensors



Throttle Valves

- Electromotive Throttle Valves
- Electronic Throttle Valves
- Mechanical Cable and Electric Servo Operated



Idle Speed Control

- Electric pneumatic



Digital Linear Actuator

- Electric servo controlled



Design and Manufacturing at OE manufacturer specification

Direct replacement (Mounting and Electrical)

Full integration with vehicle electronics

Ensuring improved efficiency in all load conditions, producing better performance, fuel economy and emissions

OE – VDO Cross reference

Common Rail Diesel

- Common Rail Pumps
- Common Rail Injectors
- CR Diesel Rails



Fuel Pumps & Fuel Feed Units

- In tank Electric pumps
- Swirl Pots
- Cartridge Pumps



Petrol Fuel Injectors

- Direct OE Replacement



Direct Replacement of OE part
Design/Manufactured to OE manufacturers specification
Cross-reference between VDO and OE number
Full integration with vehicle electronics

Contact Us



Address

Unit D , Pomona Precinct , 300 Elgin Road
Pomona , South Africa

Contact Info

Email: info@apgautomotive.co.za
Web: www.apgautomotive.co.za

Telephone

Office Phone: +27 (11) 627 2500

