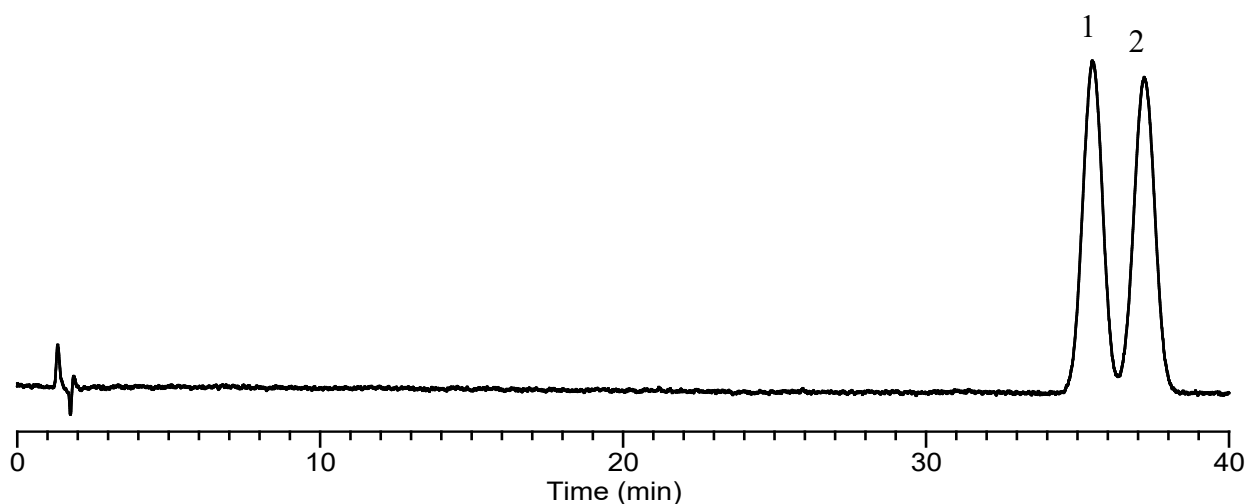


# InertSearch™ for LC

Inertsil™ Applications

## Analysis of Toluene and Toluene d8

Data No. LB716-0696



### Conditions

**System** : Primaide HPLC system  
**Column** : InertSustain C18 (5  $\mu$  m, 250 x 4.6 mm I.D.)  
**Column Cat. No.** : 5020-07346  
**Eluent** : A) CH<sub>3</sub>CN  
          : B) H<sub>2</sub>O  
          : A/B = 35/65, v/v  
**Flow rate** : 1.5 mL/min  
**Col. Temp.** : 40 °C  
**Detection** : UV 254 nm  
**Injection Vol.** : 5  $\mu$  L  
**Sample** : Standard

### **Analyte:**

1. Toluene-d8
2. Toluene  
Conc. 100 mg/L each