



GET IN TOUCH

MOBLIE

86-13515242014

WHATSAPP

86-13515242014

WECHAT

13515242014

E-MAIL

info@ruijiemedical.com

OUR COMPANY

Huaian Ruijie Medical Instruments Co., Ltd. Huaian Helen Medical Instrument Co., Ltd.

ALIBABA WEBSITE

<https://ruijiemedical.en.alibaba.com> www.ruijiemedical.com

ADDRESS

Group 3, Zhengtai Village, Matou Town, Huaiyin District, Huaian, Jiangsu, China



RUIJIEMEDICAL

SPECIALIZED IN MEDICAL SCIENCE AND TECHNOLOGY

COMPANY PROFILE



Huaian Ruijie Medical Instruments Co., Ltd., specialized in disposable medical, our company located in Huaian, Jiangsu province, welcome to contact us for details!

We stick to the principle of "quality first, service first, continuous improvement and innovation to meet the customers" for the management and "zero defect, zero complaints" as the quality objective. To perfect our service, we provide the products with the good quality at the reasonable price.

Our company has always insisted on relying quality to seek survival, benefit to seek development. Use fine after-sale service to meet the needs of consumers. Honesty and credit. Products are sold well all over our country. Warmly welcome all fields of friends to visit our company and negotiate trade.



We sincerely welcome new and old customers at home and abroad. Let us work together to develop the international market. Welcome to order, we will serve you.

RJ10006-A

Blood Lancet
(plastic Handle, Twist Top Type)

Color: sky blue, dark blue, pink, white, yellow

Size: 31G, 32G, 33G, 28G, 30G



RJ10006-C

Blood Lancet
(Stainless Steel, Flake Type)

Size: L(40MM*5.5MM)



RJ10006-B

Blood Lancet
(plastic Handle, For Accu_CHEK Lancet Device)

Color: white

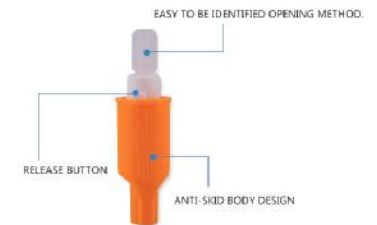
Size: 28G, 30G



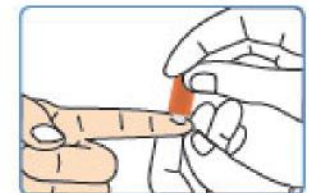
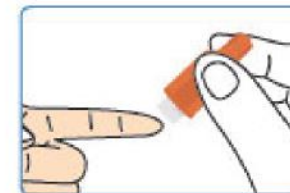
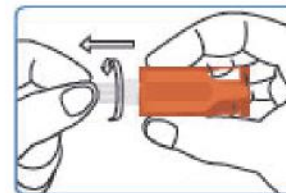
RJ10092

Safe Lancets

Size: 21G/2.2MM 23G/12.2MM
26G/1.8MM 28G/1.8MM
30G/1.6MM



Instructions for Use



RJ10007-C

Blood Lancet
(Button Activated)

Size: 21G/2.4MM 23G/2.4MM
26G/1.8MM 28G/1.8MM

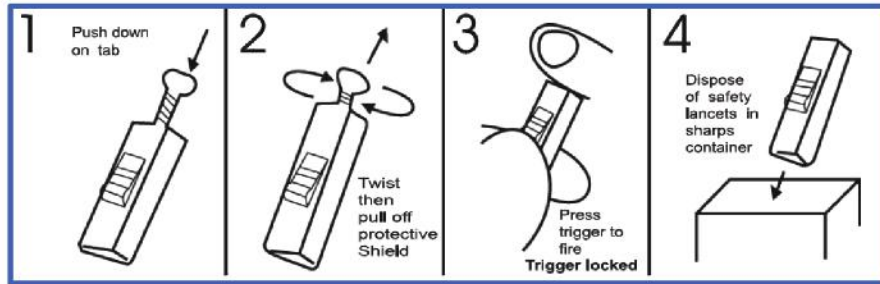


Instructions for Use

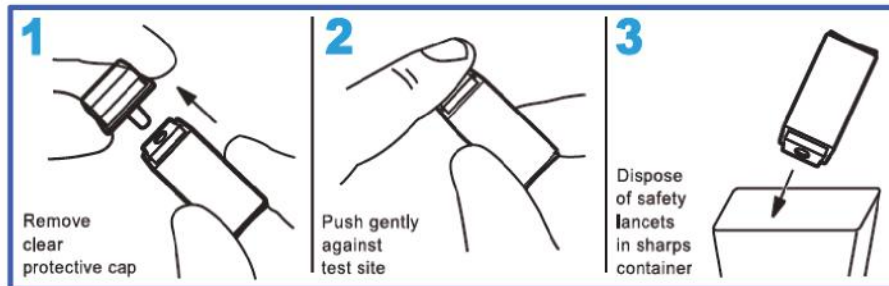
RJ10007-A

Safety Lancet
(Pressure Activated)

Size: 18G/Blade 1.8MM 23G/2.4MM
18G/Blade 2.4MM 26G/1.8MM
21G/1.8MM 26G/1.8MM
21G/2.4MM 28G/1.8MM
23G/1.8MM 30G/1.8MM



Instructions for Use



RJ10009-A/B

Blood Lancet Device

Length: 133MM, 100MM



RJ10017-A

Snap Tourniquet

Color: pink, blue, white, red, green, yellow ect

Size: 25*410mm, 25*350mm
25mm*445mm



RJ10017-B

Tourniquet

Color: pink, blue, white, red, green, yellow ect

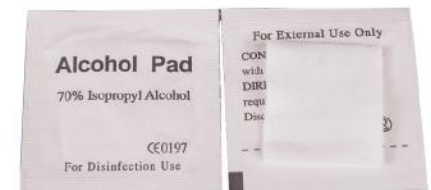
Size: 25mm*445mm



RJ10001

Alcohol Swab Pad
(70% Isopropyl Alcohol)

Size: 30mm*60mm(2 ply)
30mm*65mm(2 ply)
60mm*60mm(4 ply)



RJ10002-1
A/B/C

Patient ID Bracelet
(Adult use/Infant use/Newborn use)
Card Insert Type
Color:pink,blue,white,red,green,
yellow ect

Length:242mm/173mm/154mm



RJ10031-A1

Swab With Plastic Applicator
W/O Medium

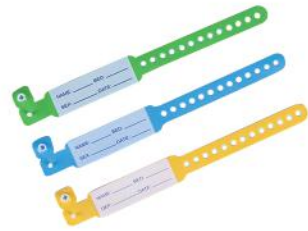
Specification:13*155mm



RJ10002-2
A/B/C

Patient ID Bracelet
(Adult use/Infant use/Newborn use)
Direct Writable Type
Color:pink,blue,white,red,green,
yellow ect

Length:242mm/173mm/154mm



RJ10034-B

Swab With Plastic Applicator
With Amies

Specification:13*155mm



RJ10002-3

Mother_body ID Bracelet
Card Insert Type
Direct Writable Type

Color:pink,blue,white,red,green,
yellow ect



RJ10034-C

Swab With Plastic Applicator
With Amies Clr

Specification:13*155mm



RJ10031-A

Swab With Wooden Applicator
W/O Medium
Specification:13*155mm



RJ10034-D

Swab With Plastic Applicator
With Stuart

Specification:13*155mm



RJ10034-E

Swab With Plastic Applicator
With Stuart Clr

Specification:13*155mm



RJ10028-B

Gyno / Cyto Brush

Color: lavender,green,pink,
white,blue etc



RJ10034-F

Swab With Plastic Applicator
With Cary Blair

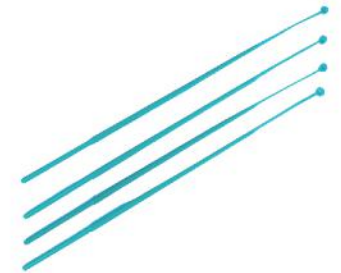
Specification:13*155mm



RJ10030

Inoculation Loop

Specification:needle type white,
1ul blue, 10ul yellow



RJ10034-G

Sterile Plastic Applicator
With Single

Standard Cotton Tip

Specification:150mm



RJ10038-1

Micro Centrifuge Tube

Specification:0.2ml,0.5ml,1.5ml

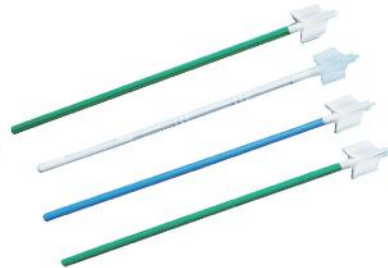


RJ10028-A

Gyno / Cyto Brush

With Broom Tip

Color: lavender,green,yellow,pink,
white,blue etc



RJ10038-2

Centrifuge Tube

Specification:2ml,4ml ,10ml



RJ10038-3

Centrifuge Tube With Screw Cap

Specification: 10ml, 15ml, 50ml



RJ10071

Urine Immersed Tube

Specification: 15ml



RJ10039

PS/Glass
Cylindrical Bottom

Specification: ϕ 16*100mm
 ϕ 15*100mm ϕ 13*100mm
 ϕ 12*100mm ϕ 13*78mm
 ϕ 12*75mm ϕ 12*60mm



RJ10118

Virus Sampling tube



RJ10067

Pasteur Transfer Pipette

Specification: 0.5ml, 1ml, 2ml, 3ml, 5ml



RJ10070

Cryovial Tube

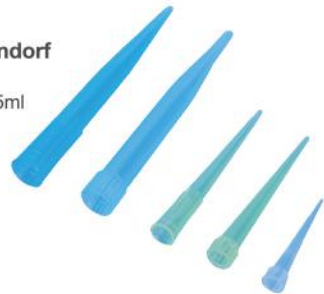
Specification: 5ml, 1.8ml



RJ10056

Pipette Tip for Gilson/Finland/Eppendorf

Specification: 10ul, 200ul, 300ul, 1000ul, 5ml



RJ10035-1

Stool Container



RJ10034

Urine Container



RJ10043

Micro Blood Collection Tube



Tube Head Color	Tube Size (mm)	Sampling Dosage	Additives Name
Red	8x45	0.5ml	No additive (Plain)
Yellow		0.5ml	Gel clot activator
Purple		0.5ml	EDTA K2
Purple		0.5ml	EDTA K2
Green		0.5ml	Sodium Heparin/ Lithium heparin

RJ10044

Blood Collection Tube



Tube Head Color	Tube Size (mm)	Sampling Dosage	Additives Name
Red	13x75	2/3/4ml	No additive (Plain)
Red	13x100	5/6/7ml	No additive (Plain)
Red	16x100	9/10ml	No additive (Plain)
Red	13x75	2/3/4ml	Clot activator
Red	13x100	5/6/7ml	Clot activator
Red	16x100	9/10ml	Clot activator
Blue	13x75	1.8/2.7ml	PT (3.2% Sodium citrate)
Blue	13x100	4.5ml	PT (3.2% Sodium citrate)
Black	8x120	1.28ml	E.S.R (3.8% Sodium citrate)
Black	13x75	1.6/2.4ml	E.S.R (3.8% Sodium citrate)
Gray	13x75	2/3ml	Sodium Heparin/Potassium oxalate
Gray	13x100	5ml	Sodium Heparin/Potassium oxalate
Green	13x75	2/3ml	Lithium heparin
Green	13x100	5ml	Lithium heparin
Green	13x75	2/3ml	Sodium Heparin
Green	13x100	5ml	Sodium Heparin
Purple	13x75	2/3/4ml	EDTA K2
Purple	13x100	5/6/7ml	EDTA K2
Purple	13x75	2/3/4ml	EDTA K2
Purple	13x100	5/6/7ml	EDTA K2
Yellow	13x100	2/3/4/5/6ml	Gel clot activator
Yellow	16x100	7/8ml	Gel clot activator
Yellow	13x100	2/3/4/5/6ml	Separate Gel
Yellow	16x100	7/8ml	Separate Gel

RJ10041

Blood Collection Needle(Hard)



Color	Size	Color	Size
Pink	18G x 1"	Green	21G x 1/2"
Pink	18G x 1/2"	Black	22G x 1"
Yellow	20G x 1"	Black	22G x 1/2"
Yellow	20G x 1/2"	Blue	23G x 1"
Green	21G x 1"	Blue	23G x 1/2"

RJ10065

Flash Back Needle

Size:21G, 22G



RJ10042

Double-wing Blood collection needle

Size:20G,21G,22G,23G



RJ10062

Embedding Cassette

Color: white,yellow,green,
pink,red,blue etc



RJ10052-A

Microscope Slide



RJ10066

Disposable Tips Box

Specification:
48well,60well,96well,100well



RJ10052-B

Microscope Cover Glass



RJ10068

Cryo Box (Plastic/Paper)

Specification:
16well,36well,49well,50well,81well,96well,
100well



RJ10038

Microscope Slides Storage Box

Specofocation:
5pcs of slide
25pcs of slide
50pcs of slide
100pcs of slide



RJ10033-A

Petri Dish

Specification:φ35mm
35mm,60mm,70mm,90mm,120mm
1room,2room,3room,4room



RJ10051

Test Tube Rack



RJ10033-D

Petri Dish

Specification:φ100mm



RJ10033-E

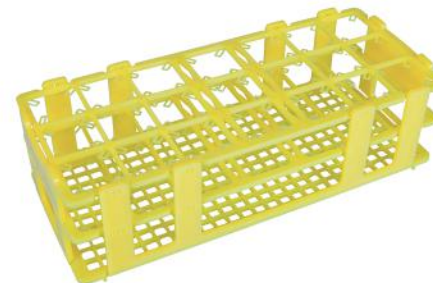
Tissue Culture Plate

Specification:
6well,12well,24well,96well



RJ10057

Luer Adapter



RJ10069

Scalpel (Plastic Handle)

Material: Carbon Steel , Stainless Steel

Size: 10# 10A 11# 12# 12B 13# 14# 15#

15C 16# 17# 18# 19# 20# 21# 22# 23#

24# 25# 36#



RJ10025

3-way Stopcock

Color:blue,red



RJ1004

I.V. Cannula

A: pen type

B:with injection port & wings

C:with wings

Size:16G-24G



RJ10027

Heparin Cap / IV Stopper

A: Yellow

B: transparent



RJ10058

Scalp Vein Set Butterfly needle

Luer slip or luer lock

Size:20G,21G,22G,23G



RJ10003

Combi Stopper

Material:PP

Color:blue,red,white



RJ10075

High Precision Flow Regulator



RJ10005

Screw Cap Male Luer Cap

Material:ABS

Color:white



RJ10064

Disposable Infusion Administration Set (IV Set)



RJ10063

Disposable Syringe

Normal, Insulin, Tuberculin, Irrigation tip etc.

Size: 1ml 2ml 3ml 5ml 10ml 20ml 30ml 50ml 60ml etc.

Needle: with or without,

luer slip or luer lock

Packing: Polybag or Blister (peel pouch)



RJ10059

Spinal Needle

Size: 16G, 18G, 20G, 21G, 22G, 23G, 24G, 25G, 26G, 27G



RJ10016-D

Luxurious Urine Drainage Bag with T-tap Outlet (with non return valve)

2 kinds hangers for choice

Size: 2000ml



RJ10016-G

Luxurious Urine Drainage Bag with T-tap Outlet (with non return valve)

Size: 2000ml



RJ10016-H

Luxurious Urine Drainage Bag with T-tap Outlet (with non return valve)

Size:2000ml



RJ10016-E

Paediatric Urine Collector

Size: 100ml , 200ml

Type: Side & Flat

Shape: Universal, Round, Water-Drop, Butterfly



RJ10016-I

Luxurious Urine Drainage Bag with T-tap Outlet (with non return valve)

Size:2000ml



RJ10016-A

Urine Drainage Bag Without Outlet (with non return valve)

2 kinds hangers for choice

Size:1000ml,2000ml



RJ10016-J

Luxurious Urine Drainage Bag with T-tap Outlet (with non return valve)

Size:2000ml



RJ10016-B

Urine Drainage Bag with Pull-Push Type Vale (with non return valve)

2 kinds hangers for choice

Size:2000ml



RJ10016-K

Luxurious Urine Drainage Bag with T-tap Outlet (with non return valve)

Size:2000ml



RJ10016-C

Urine Drainage Bag with T-tap Outlet (with non return valve)

2 kinds hangers for choice

Size:2000ml



RJ10016-F

Urine Led Bag with Hanging Elastic Strap
(with non return valve)

Size:750ml



RJ10023

PVC Stomach Tube
Size:6Fr-24Fr
With or without detectable X-ray
Polybag or blister packing



RJ10021

PVC Nelaton Catheter
Type: Universal, Female, Male
Size:6Fr-24Fr (Universal)
6Fr-24Fr (Female)
8Fr-18Fr (Male)
With or without detectable X-ray
Polybag or blister packing



RJ10024

Suction Catheter
Size:5Fr-24Fr
With or without detectable X-ray
Polybag or blister packing



RJ10022

Feeding Tube
Size:4Fr-22Fr
With or without detectable X-ray
Polybag or blister packing



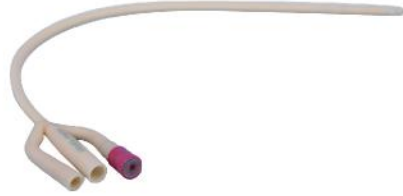
RJ10032

Latex Foley Cathete(Silicone Coated)
Rubber or Plastic Valve
Two-way:6Fr-26Fr
Length:260mm-390mm



RJ10036

Latex Foley Cathete(Silicone Coated)
Rubber or Plastic Valve
Three-way:16Fr-26Fr
Length: 390mm



RJ10048

Nitrile Gloves
Powder-free
Size:S,M,L,XL
Color:Blue etc



RJ007-A

Face mask non-woven
Material:PP non-woven
Colour:white/blue/green/red
Size:18×9CM,2PLY,3PLY



RJ10049

Latex Exam Gloves
Powder-free, Powdered
Size:S,M,L,XL



RJ007-B

Face mask non-woven
Material:PP non-woven
Colour:white/blue/green/red
Size:18×9CM,1PLY,2PLY,3PLY,4PLY



RJ10050

Vinyl / PVC Gloves
Powder-free
Size:S,M,L,XL



RJ10060

Surgical Gloves
Powder-free, Powdered
Size:S,M,L,XL



RJ10054

Elastic Crepe Bandage



RJ0082

PBT bandage



RJ10055

Elastic Plain Bandage



RJ10053

Plaster of Paris Bandage



RJ10015

First Aid Kit
Empty or standard components



**RJ10010-
CS/SS**

Surgical Blade

Material: Carbon Steel , Stainless Steel

Size: 10# 10A 11# 12# 12B 13# 14# 15# 15C
16# 17# 18# 19# 20# 21# 22# 23# 24# 25# 36#



Surgical Sutures

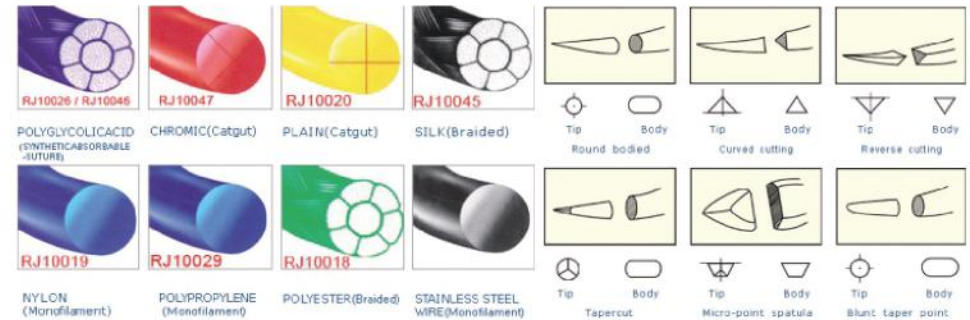


RJ100011

Stitch Cutter

Material: Carbon Steel

Length: 65MM , 110MM

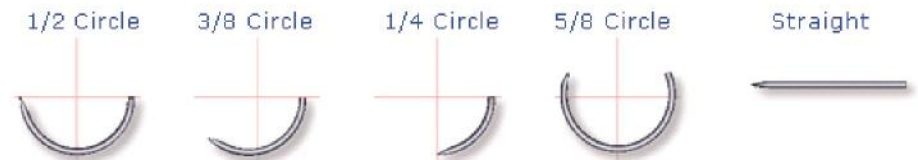


RJ10012

Gouge Blade

Material: Carbon Steel , Stainless Steel

Size: 1#,2#,3#,4#,5#,6#,8#,10#,12#,15#



**RJ10013-
A/B/C/D**

Scalpel (Plastic Handle)

Material: Carbon Steel , Stainless Steel

Size: 10# 10A 11# 12# 12B 13# 14# 15# 15C
16# 17# 18# 19# 20# 21# 22# 23# 24# 25# 36#



RJ10074

Neubilizer Mask



RJ10040

Insulin Pen Needle
Size: 30G,21G,32G,33G



RJ10078

Oxygen Face Mask



RJ10109

Sphygmomanometer Set



RJ10014

Umbilical cord clamps



RJ10109

Pules Oximeter



RJ10090

Umbilical Tape

