



KING'S  
DAUGHTERS  
MINISTRY  
*newsletter*

MAY 2026

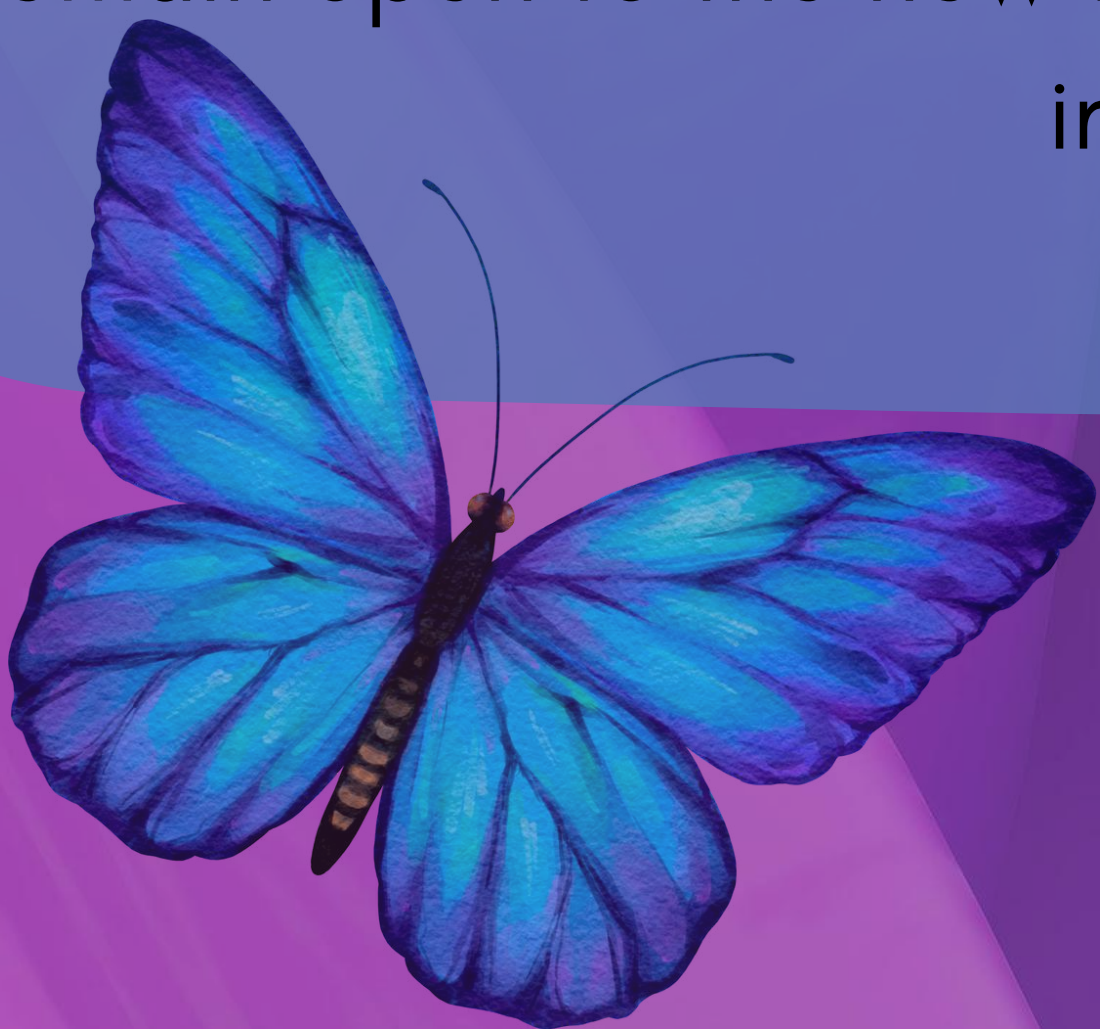
“See, I am doing a new thing! Now it springs up; do you not perceive it?”  
-Isaiah 43:19



There is something powerful about being part of a ministry where God is actively moving. It reminds us that this work is not built by our own strength, plans, or abilities – it is led by Him. Our role is simply to remain willing, obedient, and faithful as He guides each step.

When God begins to move in the hearts of people, lives are changed, burdens are lifted, and hope is restored. As a ministry family, we are called to support one another, encourage those who are hurting, and follow wherever He leads. We may not always know the full plan, but we can trust the One who does.

May we continue to walk in unity, serve with humble hearts, and remain open to the new things God is doing through this ministry and in the lives around us.



# *Celebrating Ashley* **ON MOTHERS DAY**



*Emerald House Program Participant*

MOTHERHOOD IS A JOURNEY OF NEW BEGINNINGS.  
GROWING, LEARNING, AND LOVING THROUGH EVERY SEASON. THE  
BEST MOTHERS ARE NOT THE ONES WHO ARE PERFECT, BUT THE  
ONES WHO CONTINUE TO SHOW UP EACH DAY WITH STRENGTH,  
GRACE, AND A HEART WILLING TO GROW.

# New VOLUNTEERS



*Sandra*



*Michelle*



*Jackie*

## Penny Thrift Team



*Frankie*

## Ruby Hall Educator MAKE-UP & SKIN CARE

*thank you* TO EVERY VOLUNTEER WHO  
CHOOSES TO SERVE, LOVE, AND MAKE A DIFFERENCE  
IN THE LIVES OF OTHERS.

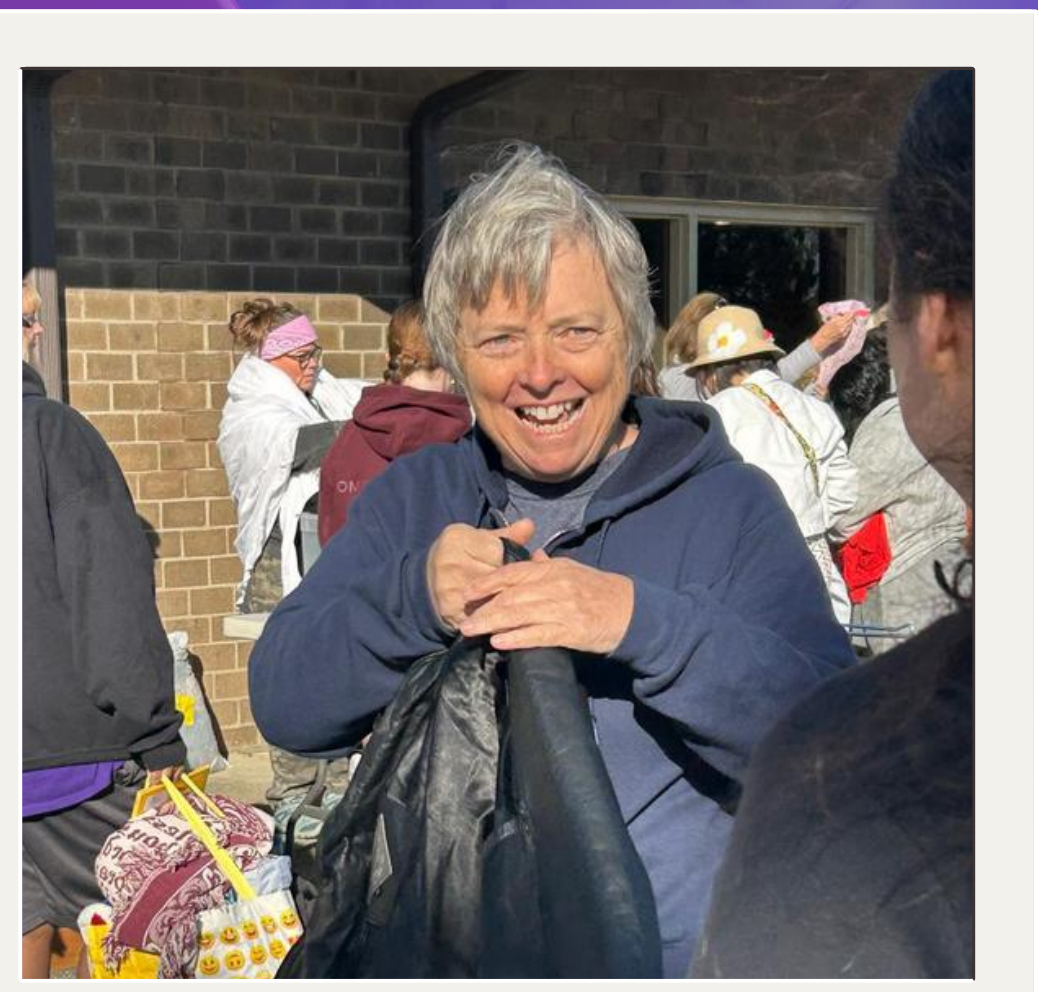
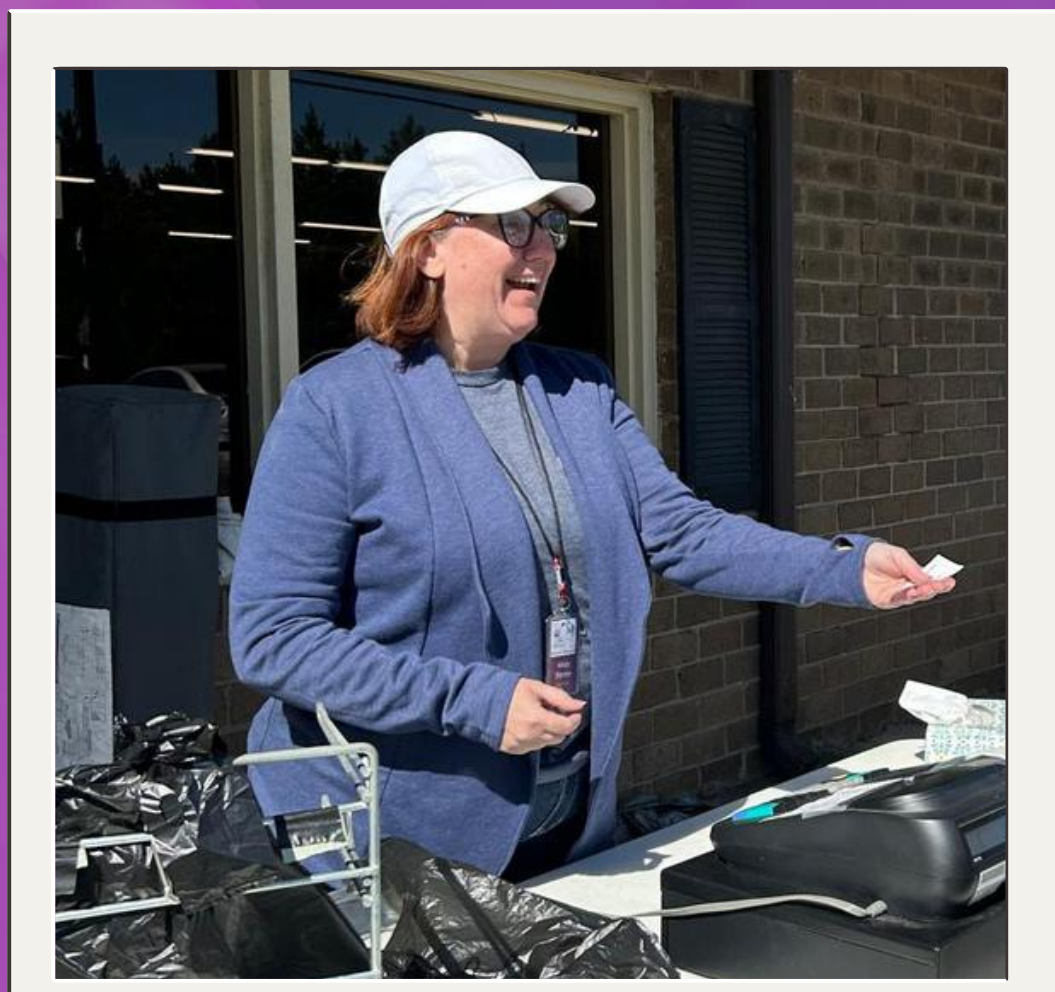


# 2026 PT Committee

The Penny Thrift Store Committee provides leadership and oversight for the store to help support the mission of The King's Daughters Ministry. The committee helps guide store operations, reviews policies and sales, supports communication and problem-solving, and works to ensure the store operates with integrity, excellence, and purpose in serving the ministry and community.



Through every donation sorted, every shelf stocked, and every act of kindness shown, our volunteers at Penny Thrift help make our ministry and transformation possible in the lives of women and children we serve. One hundred percent of the proceeds goes to The King's Daughters Ministry.



**INTERESTED IN VOLUNTEERING OR SCHEDULING A GROUP?  
 GO TO OUR WEBSITE AT [WWW.KDMONLINE.ORG](http://WWW.KDMONLINE.ORG)**



# Volunteer Appreciation Breakfast

Our Appreciation Breakfast was a special time of fellowship, encouragement, and gratitude as we celebrated the incredible individuals who faithfully serve and support the mission of The King's Daughters Ministry. Your compassion, generosity, and servant hearts make a lasting impact in the lives of the women and children we serve each day. Thank you for being such an important part of this ministry and community!

# Upcoming Events

## MORNING MANNA

Devotions for Daily Living

Every Wednesday at 9:30 am at Ruby Hall



JUNE 4<sup>TH</sup> 1PM-3PM  
JUNE 4<sup>TH</sup> 6PM-8PM  
PYROGRAPHY WITH MISTY



JUNE 14<sup>TH</sup> 1PM-3PM  
WATERCOLOR WITH SUSAN



REGISTER ONLINE 



is a faith based confidential peer support group, providing support, education, and resources to assist individuals with the challenges of having family members who are caught up in addition, domestic violence, unhelathly relationships or mental health challenges. Join us as we encourage one another towards healing and deliverance.

**EVERY MONDAY  
6:30PM  
AT RUBY HALL  
CHILD CARE NOT PROVIDED**



is a womens only faith based peer support group. Join us as we encourage one another towards healing and deliverance.



REGISTER ONLINE

# Spring *Ministry* TOUR

Thank you to everyone who joined us for our 2026 Spring Ministry Tour on April 28! It was a meaningful time of connection, conversation, and learning more about the heart behind The King's Daughters Ministry. We were honored to share our mission, our program, and the ways God is moving through the women and families we serve.



**INTERESTED IN LEARNING  
MORE ABOUT KDM?**

Contact our office if you would like to schedule a tour of your own. We would love to connect with you and share more about the ministry and our mission.

## **CURRENT SPOTS AVAILABLE**

EMERALD HOUSE  
Residential Spots



**LEARN**

**MORE**



GEM PROGRAM  
Non-Residential Spots



# NEW Ministry

# Partners



## SUNSET LANE BAPTIST

1001 N 12th St  
Bessemer City, NC 28016  
Pastor Dick Hannah



## MARIPOSA BAPTIST

1251 Mariposa Rd.  
Stanley, NC 28164  
Pastor Steve Johnson

Ministry Partners commit to a financial pledge each month. These donations are used strictly to help provide shelter, food, medical treatment, transportation, education and counseling for our resident women and their children. Your sacrifice of giving will bring hope and help to so many hurting women and provide a hope and future to their children.

# THANK YOU!



We are incredibly thankful for the generous donation and continued support of our ministry. A special thank you to Hillcrest Baptist Church and First Baptist Church - Mount Holly for helping us stock up on supplies!

# Employment

## Opportunities

### PART TIME DAYTIME SHELTER MANAGER

The Daytime Shelter Manager works closely with staff to provide supportive services to the program participants of the King's Daughters Ministry. This position assists in the responsibility for the efficient operation and administration of the KDM program for participants generally during daytime hours Monday through Friday 8am-5pm.

[LEARN MORE >>](#)

[APPLY NOW >](#)



### PART TIME ASSISTANT DIRECTOR

The part time Assistant Director supports the Executive Director by managing daily operations, staff, and programs to meet strategic goals. Key duties include overseeing operational implementation, supporting donor cultivation/fundraising, financial budgeting, and representing the organization. This role requires strong leadership, communication, and organizational skills. Hours are 9am – 4pm Monday – Thursday, in-person with occasional off-site work.

# Welcome

## CINDIE JUSTICE

"We are excited to announce that Cindie, a volunteer since 2021, has agreed to take on the role of the Administrative Assistant at KDM Ruby Hall! We have been blessed to have Cindie as a volunteer for many years prior to filling the gap in the role as the Admin Assistant. Her love for the Lord is reflected in all she does. She has been invaluable to the staff and leadership. We are truly blessed to have Cindie join the Ministry in this capacity."





# Thank You

Because of your continued and unwavering support, lives are being changed every day through King's Daughters Ministry. Your prayers, generosity, encouragement, and faithful partnership make it possible for women and families to receive support, guidance, stability, and hope during some of life's most difficult seasons. We are deeply grateful for each donor, volunteer, and ministry partner who continues to stand beside us and believe in this mission. Thank you for helping us serve with compassion, consistency, and the love of Christ. Your faithfulness is making an eternal impact.

Galatians 6:9 reminds us-

**"Let us not become weary in doing good, for at the proper time we will reap a harvest if we do not give up."**