

Cooks & Company

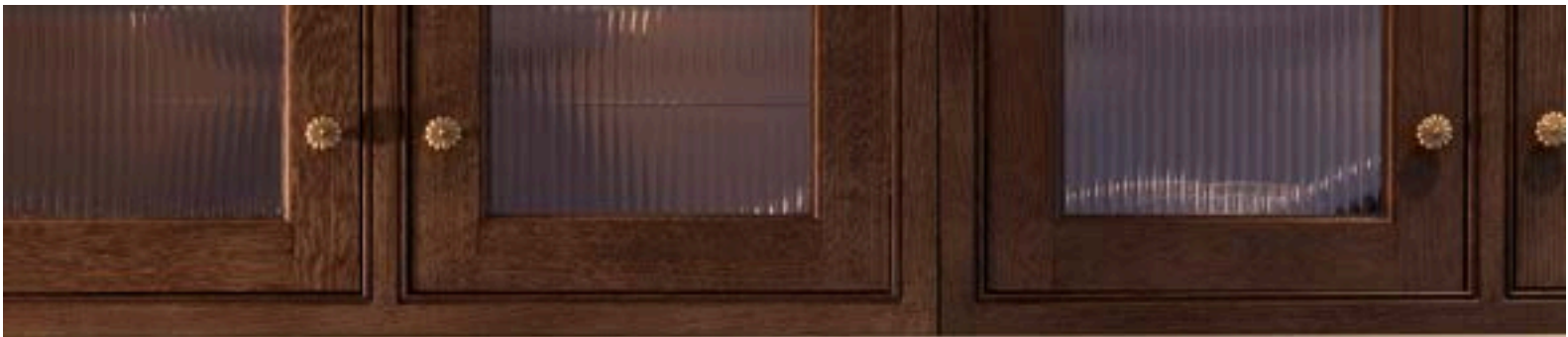
The

COOKS

BOOK

A Taste of Home

LOOKBOOK 2026



The Cook Family



Contents

Introduction	3-6
Kitchens & Interiors	7-102
Our Team	103-110
Visiting Us	III



A FAMILY BUSINESS

The Story of Cooks & Company

Founded in the 1970s, Cooks & Company launched as a hardware and joinery manufacturing business. During the 1980s our Managing Director, Peter Cook, took the decision to venture into handmade kitchen furniture. Cooks & Company took on a new facet as kitchens evolved to be bigger, more open-plan, multi-functional rooms, and in 2012 Joseph Cook, now the 3rd generation of the family, joined the business.

In addition to cabinetry, a focal point of any luxury kitchen are the appliances. We have now established ourselves as the UK's largest premium appliance retailer. Our 20,000 sq. ft showroom in Newark, Nottinghamshire, has a dedicated kitchen and interiors showroom and an appliance showroom showcasing over 40 brands.



Our Showroom

Step into our expansive showroom and experience a world where thoughtful design, fine craftsmanship, and beautiful living come together. Every area has been carefully curated to inspire - from our bespoke kitchens and luxury interiors to our premium appliance displays allowing you to explore what is possible when creativity, quality, and detail lead the way.

Whether you are renovating or building anew, our showroom offers a refined and welcoming space to discover the perfect balance of contemporary elegance and timeless design. Here, you are invited to slow down, take in the details, interact with fully working appliances, and immerse yourself in a collection created to spark ideas and shape visions.

What truly defines Cooks & Company is that everything we design is brought to life in-house, within the very same building. Behind the showroom lies our workshop, where our skilled craftsmen transform ideas into reality. This unique setting allows our clients to witness their furniture being made, to see materials take shape, and to experience first-hand the care, precision, and passion that go into every piece we produce.

Our showroom is not simply a place to view displays - it is an insight into how your project will be created. A space of inspiration, transparency, and craftsmanship, where bespoke design begins and where your home starts to take shape.





Recipes for Handmade Kitchens and Interiors

Every project is designed and made in-house, from the first technical drawing through to final finishing. Our skilled craftsmen build each space from the ground up, allowing complete flexibility in both design and execution. From the careful selection of materials to the smallest finishing details, every element is tailored to suit the client's home, lifestyle, and vision.

This hands-on approach allows us to maintain exceptional control over quality, proportion, and performance, resulting in interiors that feel considered, personal, and built to stand the test of time.



The Windmill Project

FOR THE CABINETS

Slab Door

Little Greene Invisible Green

Verde Peak Worktop

Ember Stain on Oak

Ribbed Glass Wall Cabinets

FOR THE APPLIANCES

1 BORA X PURE Venting Induction Hob

1 Gaggenau 200 Series Pyrolytic Single Oven

1 Gaggenau Combi-microwave 200 series

1 Gaggenau Warming Drawers 200 series

1 Fisher & Paykel 900mm French Door Fridge-

Freezer

FOR THE ACCESSORIES

Quooker Fusion Round Tap Patinated Brass

19 Hendel and Hendel Otto Cup handles Antique
Brass - 96mm

17 Hendel and Hendel Otto Knobs Antique Brass -
28mm

Start with a colour rooted in the landscape.

Little Greene Invisible Green sets the tone a deep, historic shade that draws the garden inward and allows the kitchen to sit quietly within its surroundings. Expansive windows frame the view beyond, turning the ever-changing garden into part of the design.

Layer in warmth with Antique Brass Otto handles by Hendel & Hendel and a patinated brass Quooker Fusion tap, bringing softness and elegance to the rich green cabinetry.

Lift the composition by introducing raised cabinetry to both the island and freestanding pantry. This creates a sense of air and light, while subtly echoing the heritage of the windmill itself. Premium Gaggenau appliances are given space to breathe, ensuring the kitchen performs as beautifully as it looks.

Finish with Verde Peak stone a bright white surface laced with soft grey-green veining paired with warm mid-tone stains to deepen the palette. Despite the L-shaped footprint, a freestanding pantry completes the space, incorporating generous storage and a dedicated bar area that blends function with quiet character.









The Cook Family Project

FOR THE CABINETS

Classic Ovolo Door
Farrow & Ball Stony Ground
Ember Stain on Oak
Taj Mahal Worktop
Ribbed Glass Bi-fold Pantry

FOR THE APPLIANCES

2 Gaggenau 400 Series Single Ovens
1 Subzero Classic French Double Door
Refrigerator with Freezer
1 Gaggenau Full Surface Induction Cooktop 90 cm

FOR THE ACCESSORIES

1 Perrin & Rowe Provence Bridge Sink Mixer -
Satin Brass
1 Shaws Bowland 800 Sink
40 Armac Martin Aberdovey Knobs - FEA
8 Armac Martin Aberdovey Cups - FEA
1 Armac Martin Cotswold Latch - FEA

Begin with a timeless base. Farrow & Ball's Stony Ground sets a soft, classic foundation, paired with richly stained oak accents to introduce warmth and depth. Layer the surfaces with Taj Mahal natural stone, using it not only as a worktop but as a feature shelf behind the hob, bringing subtle contrast and a sense of quiet luxury.

Infuse the kitchen with bespoke character. Introduce a dedicated bar cabinet complete with a mixology drawer, and create a "Little Cooks" station with a custom end panel, peg hooks and a pull-out plinth, lifting younger chefs to island height and inviting them into the heart of the home.

At the centre, place a bi-fold dresser detailed with bronze-tinted ribbed glass. Within, curate thoughtful internal elements that elevate daily rituals and centre the space around moments of making, sharing, and gathering.

Extend the composition with a tall larder and pantry cupboard, ensuring beauty is matched by effortless organisation. Finish by allowing texture to flow throughout the design. Subtle ribbed details are woven across the scheme, bringing cohesion, softness, and a quiet sense of craftsmanship to the space.





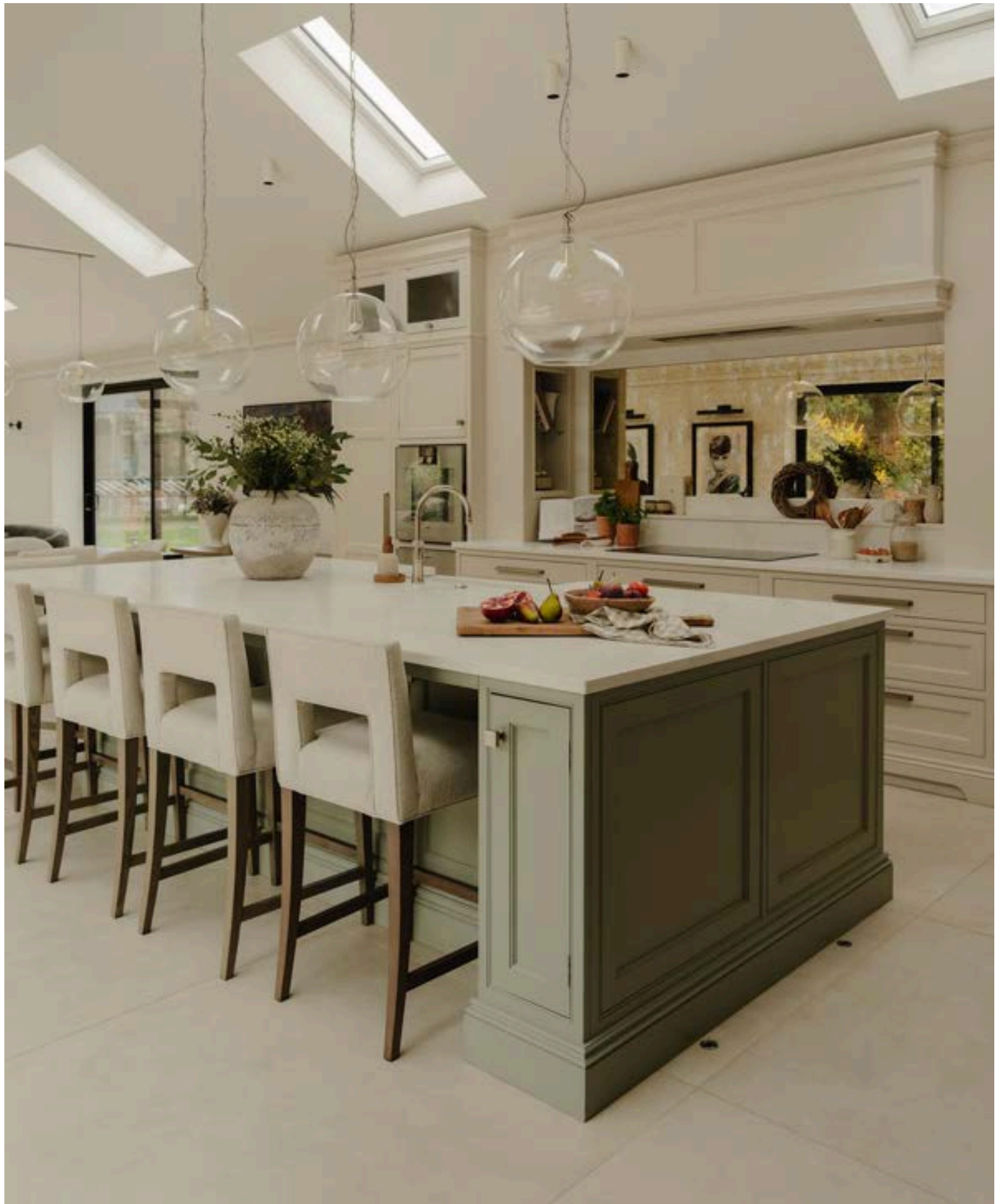












KITCHEN & PANTRY

The Mulberry Project

FOR THE CABINETS

Classic Ovolo Door
Little Greene Rolling Rog
Farrow & Ball Pigeon (Island & Pantry)
Calacatta-Dorado Worktop

FOR THE APPLIANCES

2 Gaggenau 400 Series Single Ovens
2 Gaggenau 400 Series Warming Drawers
1 Gaggenau 200 Series Dishwasher
1 Novy 90cm Canopy Hood
1 Miele Full Surface induction Hob
1 Liebherr Integrated Refrigerator
1 Liebherr Integrated Freezer

FOR THE ACCESSORIES

1 Quooker Classic Fusion Round Nickel Tap (Kitchen)
1 Quooker Cube
1 Perrin & Rowe Langbourn Monobloc Nickel Mixer Tap (Pantry)
1 Insinkerator Food Waste Disposer
39 Hendel & Hendel Liberty Knobs Dull Nickel
24 Hendel & Hendel Liberty Handles Dull Nickel

Begin with a light, open-plan space designed for family life, entertaining, and Daisy, the much-loved dog. The brief was to enhance the natural openness, creating a kitchen that feels calm, cohesive, and timeless.

Layer the cabinetry with soft, considered colour. Little Greene's Rolling Fog Light is used across the surrounding run, paired with Farrow & Ball's Pigeon on the island for subtle depth. This gentle tonal shift continues into the walk-in pantry, allowing the spaces to flow as one. Introduce detail through hardware and materials. Hendel & Hendel Liberty knobs and handles in dull nickel sit effortlessly alongside the Gaggenau ovens and Quooker tap.

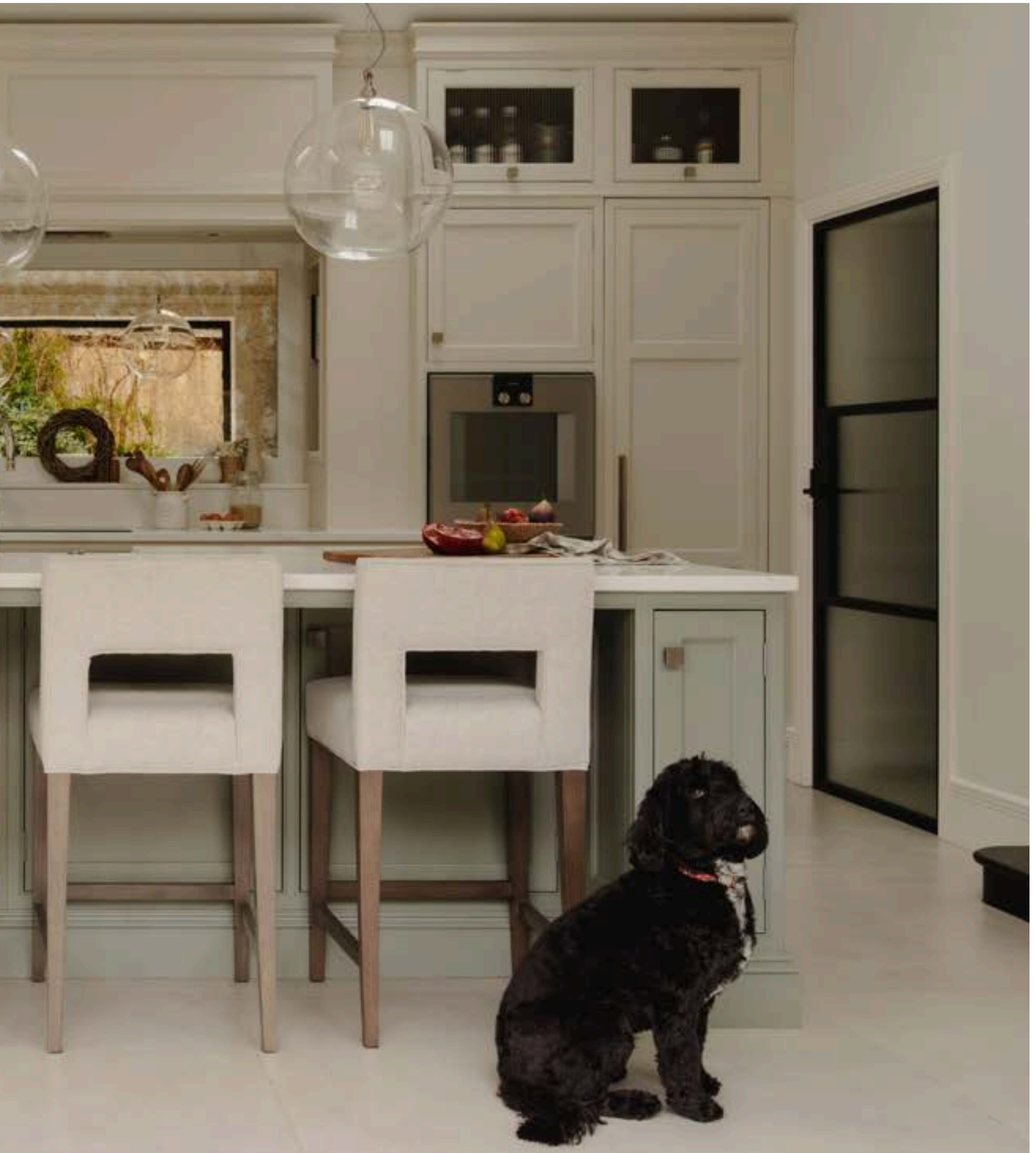
Reflect light and add texture with an antiqued mirror splashback and ribbed glass cabinetry, bringing depth without overwhelming the scheme. Shape the kitchen around performance and everyday ease, with Gaggenau ovens and warming drawers, a Miele hob, and a Novy canopy hood.

Carry the design into the dining area, where bespoke cabinetry houses the client's speaker system and reinforces the sense of continuity throughout.









BAR

The Mulberry Project

FOR THE CABINETS

Classic Ovolo Door

Farrow & Ball Down Pipe

Marquina Worktop

FOR THE ACCESSORIES

6 Hendel & Hendel Liberty Knobs Dull Nickel

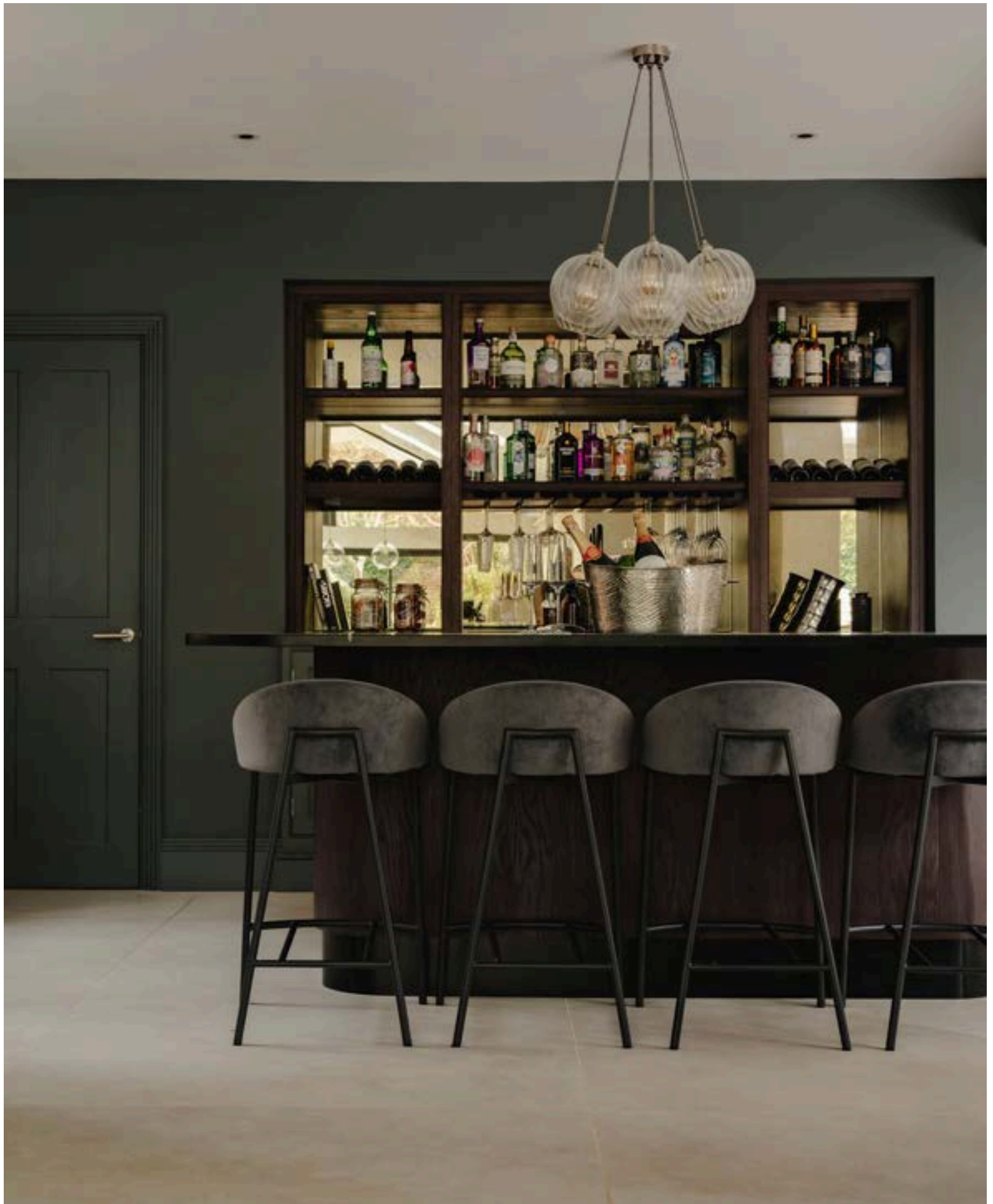
Begin with a bar area seamlessly positioned within the open-plan space, designed to complement the kitchen while creating a more atmospheric setting for hosting.

Introduce depth through colour. Farrow & Ball's Down Pipe is carried across the cabinetry, surrounding walls, and doors, creating a rich, colour-drenched backdrop that contrasts beautifully with the lighter kitchen.

Echo the kitchen through material detail. An antiqued mirror splashback reflects light and softens the darker palette, while bespoke wine glass holders and tailored shelving bring function and finesse.

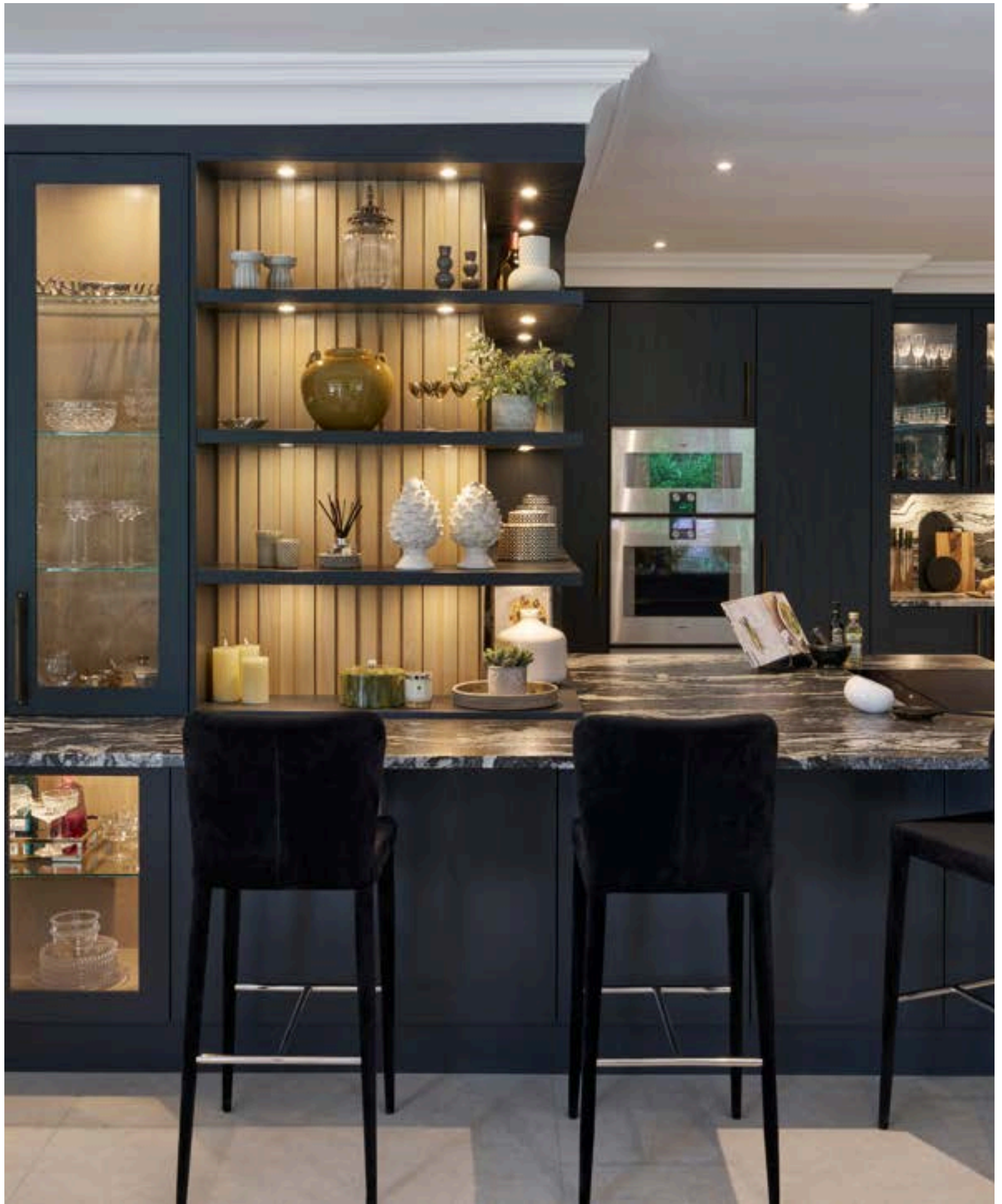
Add a decorative focal point with a standalone wine display, complete with mirrored backing to create depth and visual interest.

The result is a refined, atmospheric bar area designed for entertaining, with everything close to hand for hosting throughout the seasons.









KITCHEN & MEDIA WALL

The Firbeck Hall Project

FOR THE CABINETS

Slab Door
Farrow & Ball Railings
Alfred Stain on Oak
Black Beauty Worktop
Glass Wall Cabinets

FOR THE APPLIANCES

1 Gaggenau 400 Series Single Oven
1 Gaggenau 400 Series Microwave
1 Gaggenau 400 Series Warming Drawer
1 Gaggenau 200 Series Dishwasher
1 Novy 1821 Panorama Induction Hob
1 Sub-Zero Built in 914mm Refrigerator
1 Sub-zero Built in 762mm Wine Cooler
1 Sub-Zero Built in 914mm Freezer
1 La Pavoni Semi-professional "Botticelli Speciality"
Coffee Machine
1 La Pavoni Cilindro Prosumer Coffee Grinder

FOR THE ACCESSORIES

1 Quooker Flex Tap Stainless Steel
1 Quooker Cube
42 Armac Martin Mix Diamond Knurled Cabinet
Handle & Backplate 224mm SAS & MBL

Begin with a palette that reflects both contemporary design and the character of Firbeck Hall. Smooth, architectural slab cabinetry in rich, dark tones forms the foundation, softened with natural oak accents, subtle lighting, and layered, luxurious materials.

Introduce drama through the worktop. Black Beauty stone becomes the centrepiece, its expressive veining bringing depth and movement to the otherwise calm, refined composition.

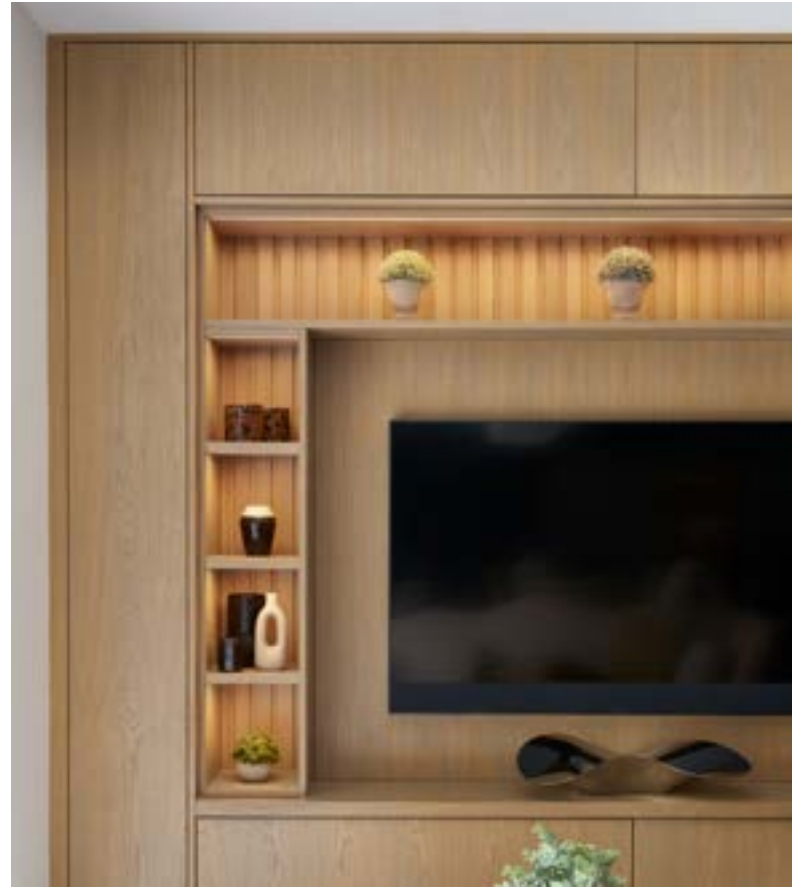
Shape the space around both performance and sociability. Professional-grade Gaggenau and Sub-Zero appliances are seamlessly integrated and a peninsula forms a natural gathering point. Open shelving, ambient lighting, and integrated seating combine to create a focal area designed as much for conversation as for cooking.

Allow the kitchen to flow effortlessly into the living zone. Carry the slatted oak detailing through into the media wall, creating continuity and warmth. Soft, integrated lighting highlights texture and offers space for styling, while a simplified door design in light oak subtly lifts the scheme, ensuring the kitchen, media wall, and seating area read as one harmonious whole.









BEDROOM

The Firbeck Hall Project

FOR THE CABINETS

Classic Shaker Door with Inlay
Little Greene Lamp Room Black
Tektura Charisma Wallpaper

Carry the story forward. Continue the sleek, contemporary aesthetic and the deeper, indulgent tones established in the kitchen, shaping a bedroom that feels both luxurious and deeply relaxing.

FOR THE ACCESSORIES

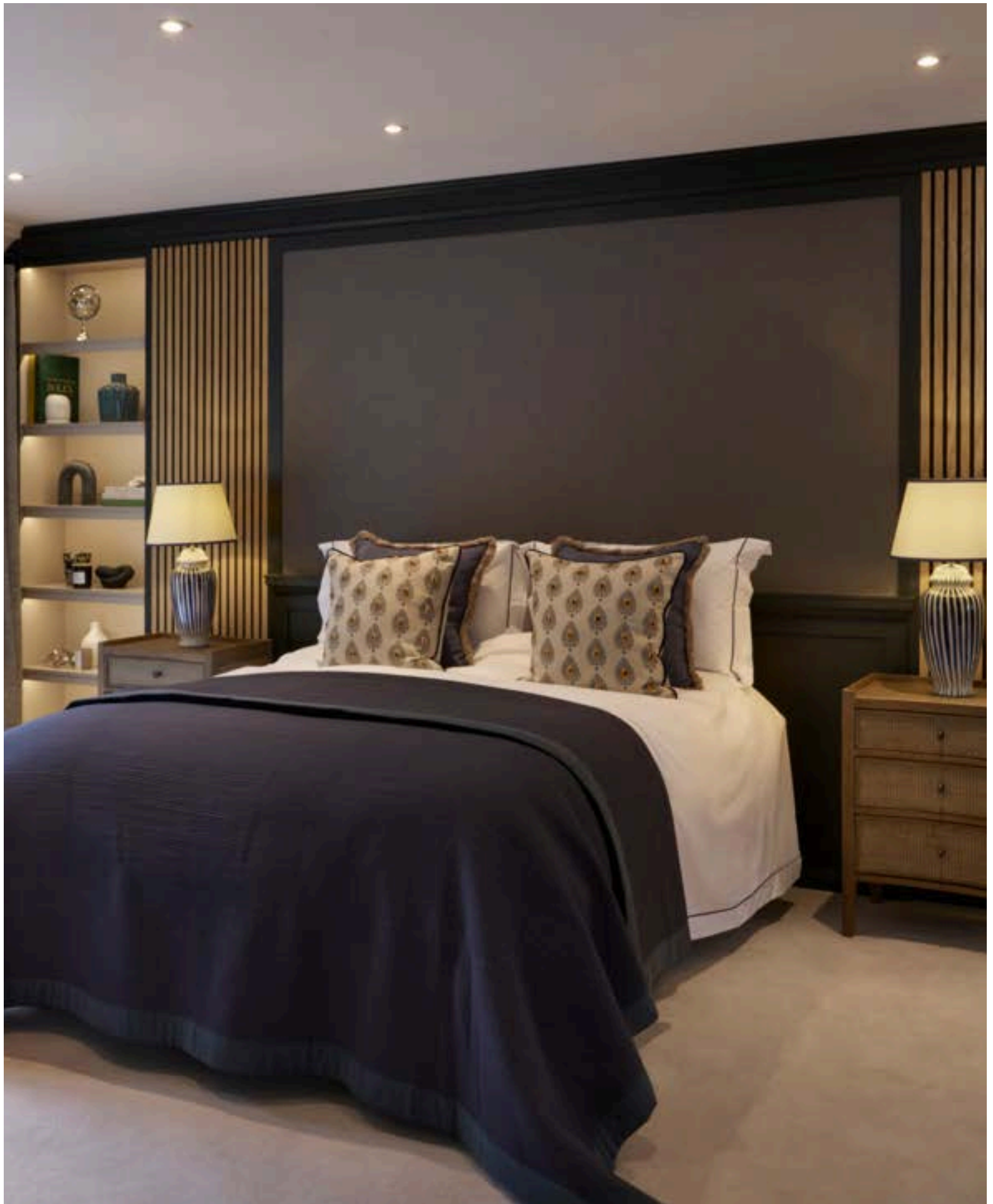
15 Armac Martin Kingsheath 338mm pull handles
SNP

Anchor the room with a statement headboard wall, framing the bed and incorporating shelving to display personal objects and soft styling. Along one side, introduce a bespoke chest of drawers to provide generous storage and a practical daily surface. Opposite, run fitted wardrobes the length of the wall, ensuring seamless organisation without visual interruption.

Balance form and function through proportion and restraint. Every element is designed to support calm living - whether enjoying a morning coffee from the balcony or unwinding into the evening.









DRESSING ROOM

The Firbeck Hall Project

FOR THE CABINETS

Classic Ovolo Door

Farrow & Ball Shadow White

Claret Stain on Walnut

Glass Fronted Doors

Tektura Charisma Wallpaper

Malone Quartz Collection Upholstery

FOR THE ACCESSORIES

13 Armac Martin Kingsheath 338mm pull handles
SNP

12 Armac Martin Kingsheath 338mm knobs SNP

Begin with lightness and calm. Dress the room in the soft warmth of Shadow White to create a serene, elegant foundation - a palette chosen to evoke the quiet luxury of a boutique dressing space.

Frame the room with glass-fronted wardrobes, allowing clothing to be seen and celebrated, while open shoe storage introduces both accessibility and display. At the centre, place an elegant island, offering a practical surface and a comfortable place to sit, transforming everyday routines into unhurried rituals.

Behind the seating, introduce a glass-topped display to showcase accessories, turning belts, purses, and personal pieces into part of the design itself.

The result is a space where organisation meets indulgence - beautifully considered, quietly luxurious, and effortlessly refined.









“Having recently built our dream home, we quickly realised just how stressful the process could be - so many decisions, so many choices, and many sleepless nights trying to turn a dream into reality. Finding Cooks & Company was a real turning point for us. The support we received on both our kitchen and bedroom projects was genuinely a game changer. Not only was the design team outstanding when it came to our kitchen and bedroom furniture, but they also took the time to understand our entire project, helping us to bring everything together into one cohesive and beautiful home design. Nothing was ever too much trouble, and the level of care and attention we received was exceptional. We truly cannot thank the whole team enough and would recommend Cooks & Company without hesitation.”

THE FIRBECK HALL PROJECT







KITCHEN & MEDIA WALL

The Fox Project

FOR THE CABINETS

Classic Ovolo Door

Little Greene French Grey

Snowy Ibiza Worktop

FOR THE APPLIANCES

1 Lacanche Citeaux Classic 1505mm - White & Nickel

1 Novy 829 Canopy Hood

2 Fisher Paykel Fully Integrated Over-Under Fridge-Freezer

1 Fully Integrated Miele Dishwasher

FOR THE ACCESSORIES

1 Quooker PRO3 Classic Fusion Round Nickel

1 Quooker Cube

1 Thomas Denby Heritage 900 Double Bowl Sink

31 Armac Martin 160mm Bournville pull handle PNP

14 Armac Martin 35mm Bournville knobs PNP

Begin with a colour chosen for quiet sophistication. Little Greene French Grey sets the tone, bringing softness and timeless elegance to the space. Introduce a classic door profile, in-frame cabinetry finished with a single quirk detail, adding subtle depth and a sense of heritage.

Make functionality an essential ingredient. A generous double larder with an integrated cold shelf provides beautifully organised storage, designed to support everyday family life while keeping essentials perfectly fresh.

At the heart of the kitchen, place a substantial island to encourage gathering. Top with Snowy Ibiza quartz for a classic, light-reflective surface, and finish with polished nickel Bournville handles by Armac Martin - a timeless detail that quietly elevates the design.

Complete the composition with a true statement piece. A Lacanche Citeaux Classic 1505mm range in White & Nickel introduces both performance and presence, anchoring the room with culinary character.

Allow the kitchen to extend naturally into the living space. A considered media wall with open shelving introduces a relaxed focal point, encouraging the kitchen to become not just a place to cook, but a place to connect.





“We are so delighted with our kitchen from Cooks & Company. The showroom is absolutely beautiful and gave us lots of inspiration in creating our perfect family kitchen. From creating, to fitting, to styling - every team within Cooks was exceptional, very talented and a pleasure to work with. I’m sure if we endeavour on any future projects we will work with them again.”

THE FOX PROJECT







BOOTROOM

The Fox Project

FOR THE CABINETS

Shaker Fifty Door

Little Greene French Grey

Snowy Ibiza Worktop

FOR THE APPLIANCES

2 Miele Washer-Dryers

FOR THE ACCESSORIES

1 Perrin & Rowe - Mayan X-Head Tap - Nickel

2 Armac Martin 160mm Bournville pull handle
PNP

12 Armac Martin 35mm Bournville knobs PNP

Continue the story from the kitchen. Carry Little Greene French Grey into the bootroom to create a seamless transition, allowing the home's palette to flow effortlessly from one space to the next.

Introduce simple Shaker-profile cabinetry to echo the clean, versatile language of the kitchen, finished with polished nickel Bournville handles by Armac Martin to maintain a quiet note of classic refinement.

Design the space to make everyday tasks feel effortless. A raised laundry area lifts washing to a comfortable working height, while an integrated hanging rail provides a dedicated place for drying outdoor clothing, keeping wet coats and muddy layers organised and out of the way.

Shape the room around real family living. Thoughtfully planned storage and practical zones support busy routines, ensuring the bootroom feels not only beautiful, but genuinely useful - a natural extension of the kitchen it follows.









The Brunswick Project

FOR THE CABINETS

Shaker Raised & Field Door

Little Greene French Grey

Little Greene Dark Brunswick Green

Calacatta Gold Worktop

FOR THE APPLIANCES

1 Fisher Paykel Combi-Microwave

1 Fisher Paykel Single Oven

1 Fisher Paykel 14 cm Warming Drawer

1 Fisher Paykel 90cm Touch & Slide Hob

1 Novy 829 90cm Canopy Hood

1 Liebherr Built Under Wine Cabinet

1 Liebherr Integrated BioFresh Fridge

1 Liebherr Integrated Freezer

1 Integrated Miele Dishwasher

FOR THE ACCESSORIES

1 Quooker PRO3 Fusion Round Patinated Brass

1 Shaws Bradshaw Sink

42 Perrin & Rowe Large Contour Drawer Handles

- Aged Brass

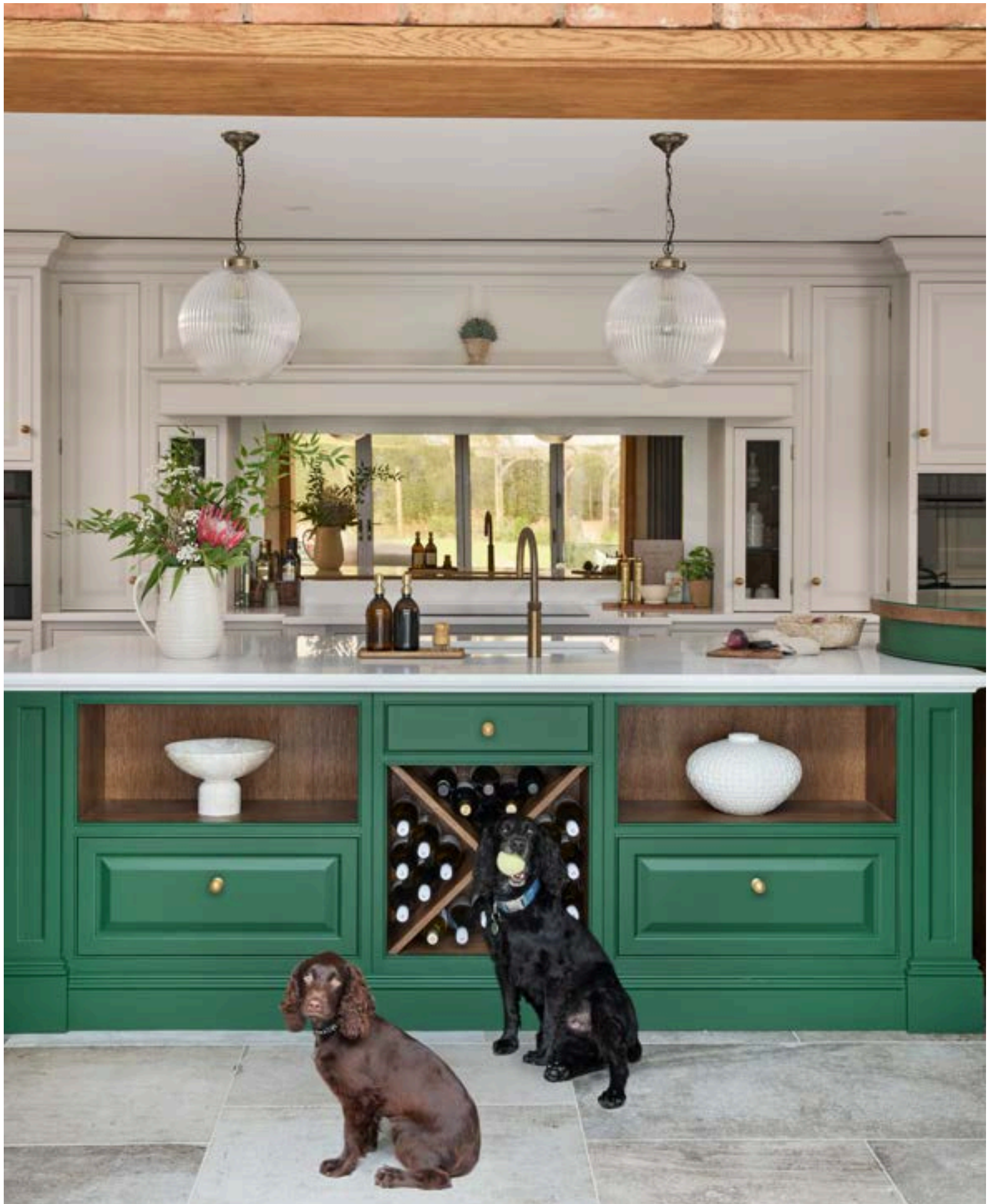
Begin by shaping the kitchen around the way the clients truly live. Instead of placing seating at the island, introduce a sculptural rondel seating area, allowing for relaxed dining while preserving the island as a generous, uninterrupted workspace.

Add organisation as a core ingredient. A bespoke pantry cupboard with deep pull-out trays, tiered shelving, a cold slab and oak spice storage creates a place for everything, making daily routines feel calm and considered.

Tuck indulgence discreetly into the design. A hidden bar, complete with a Liebherr built-under wine cabinet and softly lit glass shelving, offers an elegant entertaining space that can be concealed effortlessly behind cabinetry when not in use.

Establish the palette with French Grey cabinetry, enriched by a Brunswick Green island to create warmth and depth. Introduce a Shaker Raised & Field door for a subtle nod to heritage, and finish with Perrin & Rowe Contour handles to bring a refined final touch.

Complete the composition with carefully chosen working elements, including a patinated brass Quooker tap paired with a Shaws sink, ensuring the kitchen is not only beautiful, but shaped entirely around everyday living.













The Mayfield Project

FOR THE CABINETS

Heritage Beaded Door

Little Greene French Grey

Farrow & Ball Hopper Head

Ethereal Dusk Polished Worktop

FOR THE APPLIANCES

2 Miele Oven - H7260

2 Miele 29cm Warming Drawers

1 Novy Panorama 120 Pro Hob

1 Fisher Paykel Integrated Column Fridge

1 Caple Undercounter Wine Cabinet

1 Integrated Miele Dishwasher

FOR THE ACCESSORIES

1 Quooker Classic Fusion Round Nickel

1 Shaws 1000 Double Bowl Sink

23 Hendel & Hendel Greenwich Pull Handles -
Polished Nickel

18 Hendel & Hendel Greenwich Oval Knobs -
Polished Nickel

Begin by building the kitchen around movement and gathering. Introduce two statement islands: one centred around the Novy Panorama 120 Pro, shaped with a curved seating area for relaxed dining, and the other positioned opposite a bank of Miele ovens and warming drawers to create a generous, dedicated preparation space.

Establish the palette with hand-painted cabinetry in Little Greene French Grey, layered with Farrow & Ball's Hopper Head for contrast and depth. Finish with polished nickel Greenwich hardware by Hendel & Hendel, paired with a matching Quooker tap for a cohesive and timeless finish.

Frame the refrigeration with bespoke storage. On one side, introduce a pantry cupboard with integrated spice storage and a cool slab to support everyday organisation. On the other, create a combined bar and coffee station, complete with a wine fridge, bespoke shelving and hanging stemware storage, turning daily rituals into considered moments.





From the first design meeting with Cooks & Company to the final day of fitting the kitchen, the whole process was seamless. Having the ability to look around the vast array of different kitchen styles in their showroom and then explore the numerous appliance types and brands with their appliance team, made the decision-making process so much easier. We were able to see the kitchen features being designed and try out the appliances we chose. We would highly recommend Cooks & Company. We look forward to working with them on our next project and would like to especially thank both Chris and Phoebe for designing and installing our beautiful kitchen.

THE MAYFIELD PROJECT





The Greystones Project

FOR THE CABINETS

Classic Ovolo Door

Little Greene French Grey

Ethereal Dusk Polished Worktop

Harvest Stain on Oak

FOR THE ACCESSORIES

1 Perrin & Rowe Ionian Mixer Bridge Tap

Crosshead Handles - Antique Brass

1 Shaws Classic Shaker Sink 900mm

19 Hendel & Hendel Hudson Pull Handles DBB

6 Hendel & Hendel Hudson T Bar Knob DBB

2 Soho Lighting Charterhouse Collection 2 Gang

Sockets - Antique Brass

Begin by creating a natural pause between spaces - somewhere to arrive, to unload, to reset. Let the architecture lead, allowing the history of the home to shape the layout.

Line the walls with tongue-and-groove panelling and introduce generous hanging for coats, integrated drawers for life's smaller pieces, and benches designed for unlacing boots after long walks. Add tall cupboards to quietly hold the practicalities: towels, cleaning essentials, and a hidden wine cooler for modern convenience.

Opposite, position a traditional butler sink as both anchor and working surface. Above it, open shelving becomes a stage for the client's antique collections, bringing warmth, memory and individuality into the everyday.

Finish the space in Farrow & Ball's French Gray - a colour that moves with the light, sometimes soft, sometimes silvery - and layer in texture through grained cabinetry and Hudson Pull handles from Hendel & Hendel for a final note of understated elegance.

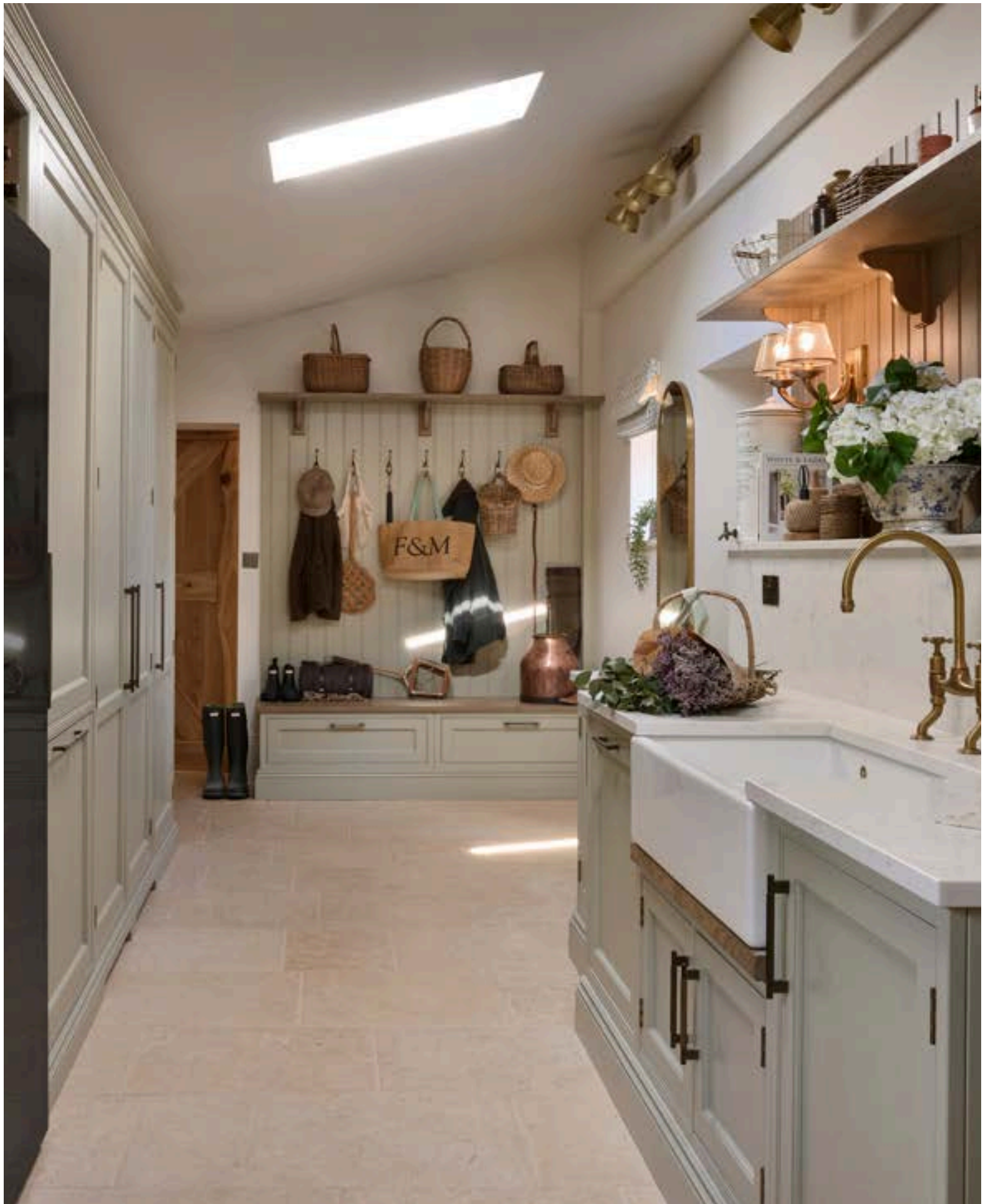
Serve as a beautifully considered threshold: practical, characterful, and quietly restorative - a space that honours the past while supporting the rhythms of modern life.





It's not a Boot Room, a Butler's Pantry nor a Laundry or Plant Room.
It's all four. And it's a room that is a connecting walk-way from a Grade II listed house to a newly built Coach House - so, a demanding design brief, majestically achieved by Chris and Phoebe! The installation too was as creative as the design when the inevitable wrinkles emerged with some inspired joinery by the on site craftsmen.

THE GREYSTONES PROJECT







KITCHEN

The Pelham Project

FOR THE CABINETS

Classic Ovolo Door

Little Greene French Grey

Farrow & Ball Off Black

Snowy Ibiza Worktop

FOR THE APPLIANCES

1 Lacanche Citeaux 150 - Stainless Steel + Brass

1 Liebherr Monolith Refrigeration Bank

FOR THE ACCESSORIES

1 Quooker Classic Fusion Round - Stainless Steel

1 800 Shaws Butler Sink

15 Corston Milliner Furniture Handle 128mm -
Antique Brass

16 Corston Milliner Furniture Knob - Antique
Brass

Begin by embracing the openness of the space. Design the kitchen to work effortlessly within an open-plan layout, ensuring generous food storage and carefully chosen appliances support the rhythm of daily family life and home-cooked meals.

Place a statement piece at the heart of the room. A stainless steel and brass Lacanche Citeaux range sits beneath an imposing mantle, framed by ornately detailed traditional cabinetry hand-painted in Little Greene French Grey, creating a striking balance of craftsmanship and performance.

Introduce contrast through the island. Finished in Farrow & Ball's Off-Black and set upon an intricately moulded plinth, it grounds the space while offering a generous surface for preparation and gathering.

Complete the composition with seamless refrigeration. A Liebherr Monolith bank provides abundant, discreet storage, ensuring everything is kept beautifully organised and perfectly fresh.













MEDIA WALL

The Pelham Project

FOR THE CABINETS

Classic Ovolo Door

Little Greene French Grey

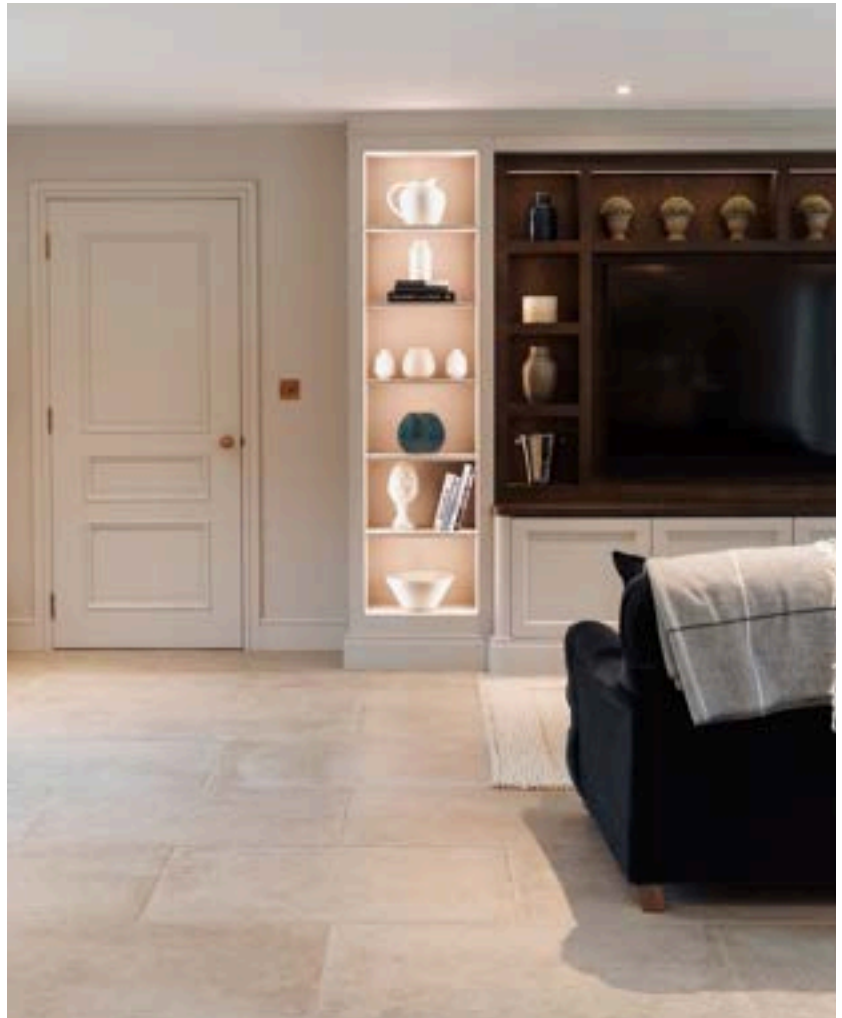
Dark Chocolate Stain on Oak

At the far end of the open-plan kitchen, introduce a media wall to complete the space creating a natural place to unwind, entertain, and gather. Designed to bring everyone together while still allowing for individual moments, it supports cooking, working, and relaxing within one cohesive setting.

Frame the area with cabinetry painted in Little Greene French Grey, surrounding a stained timber television mount to echo the traditional language of the kitchen. Concealed push-to-open storage keeps everyday essentials neatly out of sight, while softly lit open shelving allows decorative pieces to take centre stage.

Finish with considered furnishings in contrasting deep blue velvet, adding warmth and comfort to a zone that feels relaxed, sociable, and perfectly suited to entertaining.





BOOTROOM

The Pelham Project

FOR THE CABINETS

Classic Ovolo Door

Farrow & Ball Studio Green

Snowy Ibiza Worktop

FOR THE APPLIANCES

1 Siemens Washing Machine

1 Siemens Dryer

FOR THE ACCESSORIES

1 Perrin & Rowe Ionian Crosstop Bibcock Taps -
Aged Brass

1 Shaws 600 Butler Sink

4 Corston Milliner Furniture Handle 224mm -
Antique Brass

1 Corston Milliner Furniture Handle 128mm -
Antique Brass

14 Corston Milliner Furniture Knobs - Antique
Brass

Begin with purpose. Design the bootroom as a calm, hardworking transition space one that quietly supports daily routines while maintaining a sense of order and refinement.

Dress the cabinetry in Farrow & Ball's Studio Green, creating depth and richness while allowing the detailing to take centre stage. The deep tone brings a sense of permanence and sophistication, grounding the space without overpowering it.

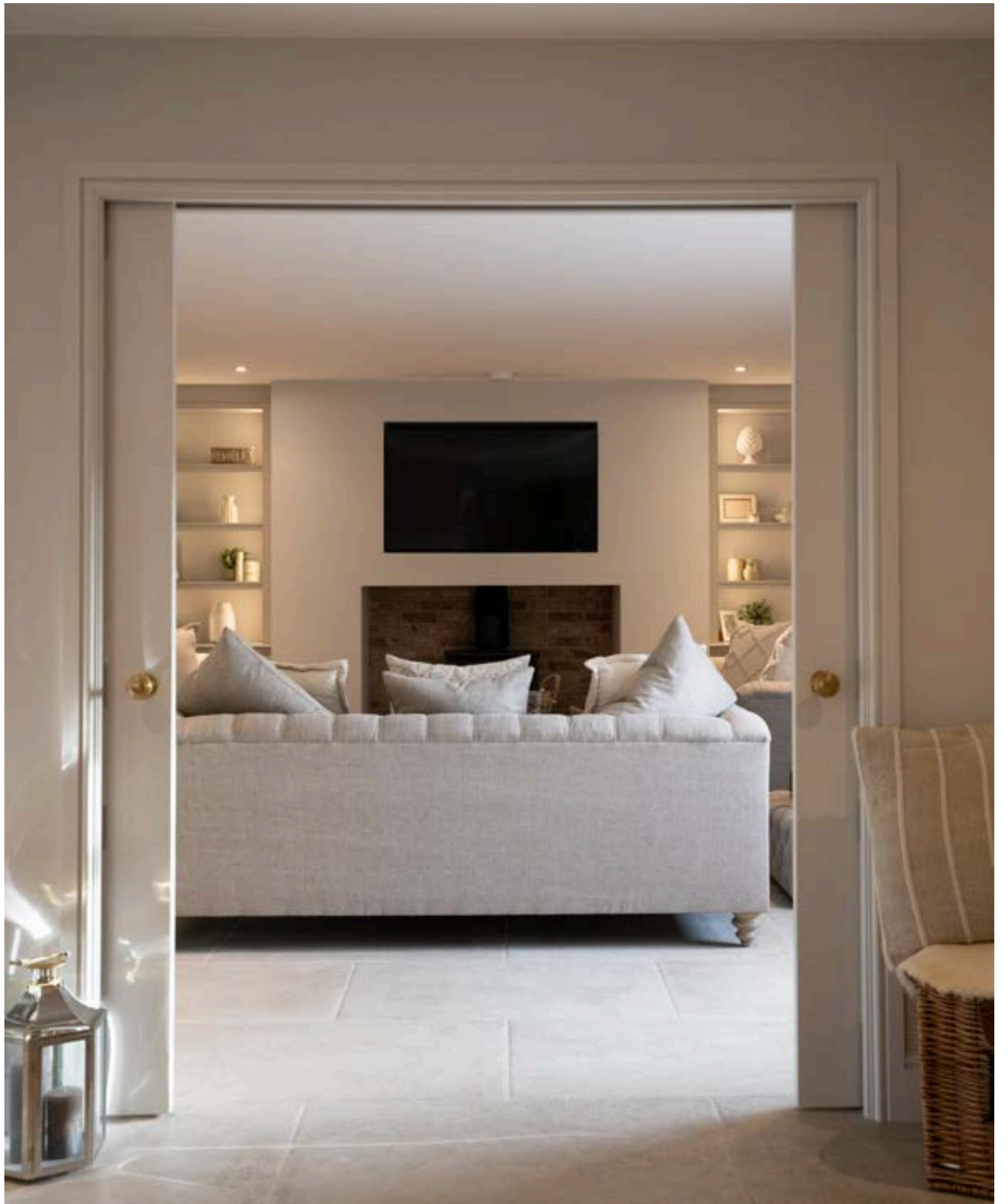
Balance form with function. Tall storage conceals coats, boots and essentials, while integrated utility elements are thoughtfully positioned to keep everything close to hand yet effortlessly tidy.

Finish with considered details. Durable surfaces, carefully chosen hardware and precise joinery ensure the space works hard behind the scenes a practical room, elevated through craftsmanship and design.









SNUG

The Pelham Project

FOR THE CABINETS

Classic Ovolo Door

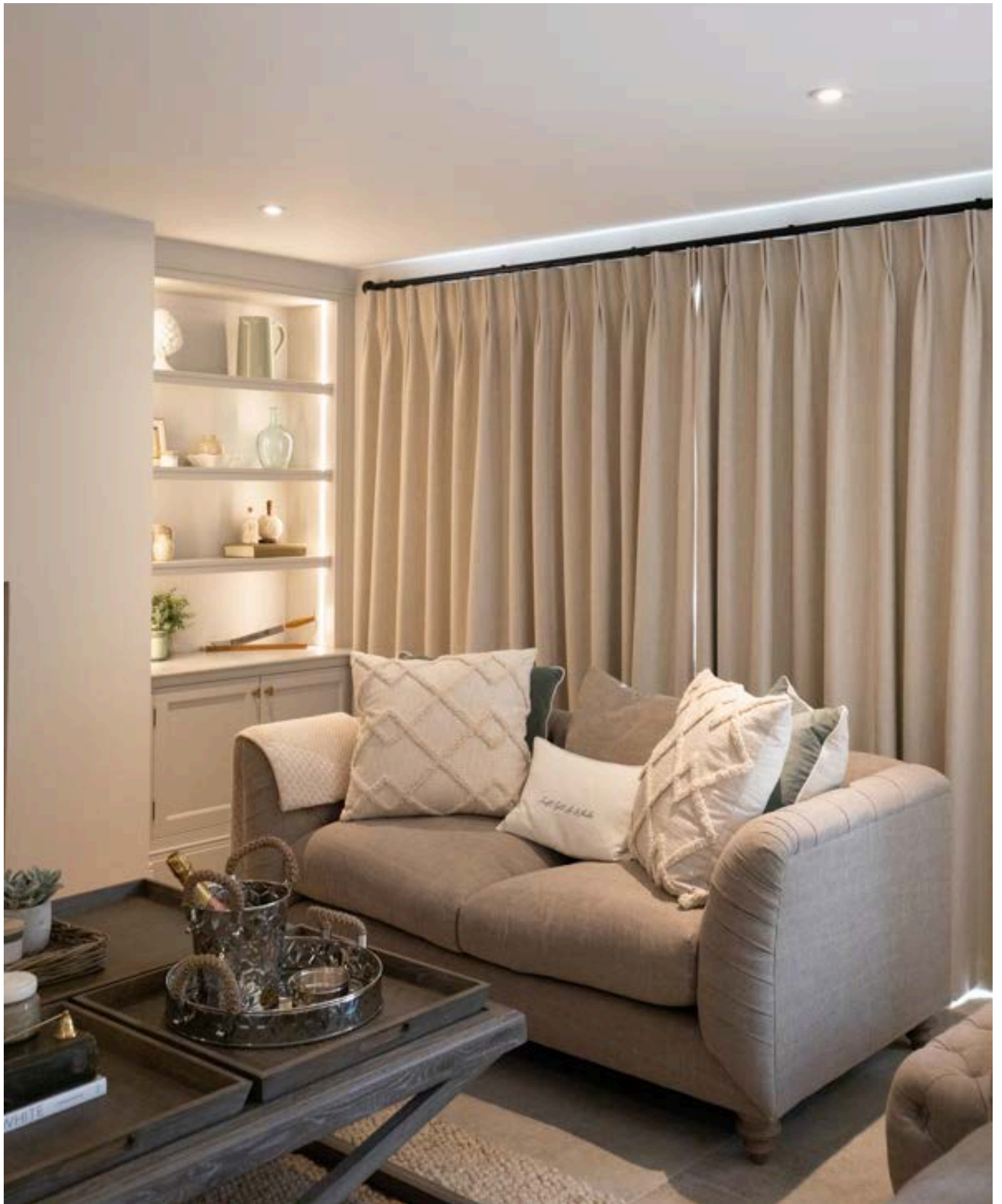
Little Greene French Grey

Continue the story through the sliding doors. As the open-plan kitchen unfolds into the snug, carry Farrow & Ball's French Grey into this softer setting, allowing the cabinetry to create a seamless visual thread that runs throughout the home.

Shape the room as a place to retreat. Bespoke cabinetry provides discreet storage, keeping everyday items neatly tucked away, while open shelving offers space to display personal pieces, books and collected objects, layering the room with character and familiarity.

Soften the atmosphere with gentle lighting and tactile finishes, transforming this corner into a cosy counterpart to the kitchen beyond. Designed as a snug sitting just off the open-plan space, it becomes a place to unwind, entertain quietly, or step away while still feeling connected.

The result is a room that feels calm and comforting - a natural extension of the kitchen's design language, reimagined for rest and reflection.







Designed by Experts, Manufactured by Craftsmen...

“At Cooks & Company, every project begins with expertise and is brought to life through craftsmanship. Our designers and workshop team work side by side, combining creativity, technical precision and decades of experience to create something truly special for every client.

We’re incredibly proud of the team behind the scenes a collective of skilled craftsmen and passionate designers who care deeply about the detail. Together, we’ve built more than a showroom; we’ve created a space that reflects our standards, our heritage and what we’re capable of as a business. When design and craftsmanship work in harmony, the results speak for themselves.”

Chris Wilburn, Kitchen & Interiors Director



Meet our skilled workshop team and project managers, the people behind every Cooks & Company project. From first cut to final fit, each and every piece is carefully overseen by this team, ensuring every detail is crafted, checked and delivered exactly as it should be.



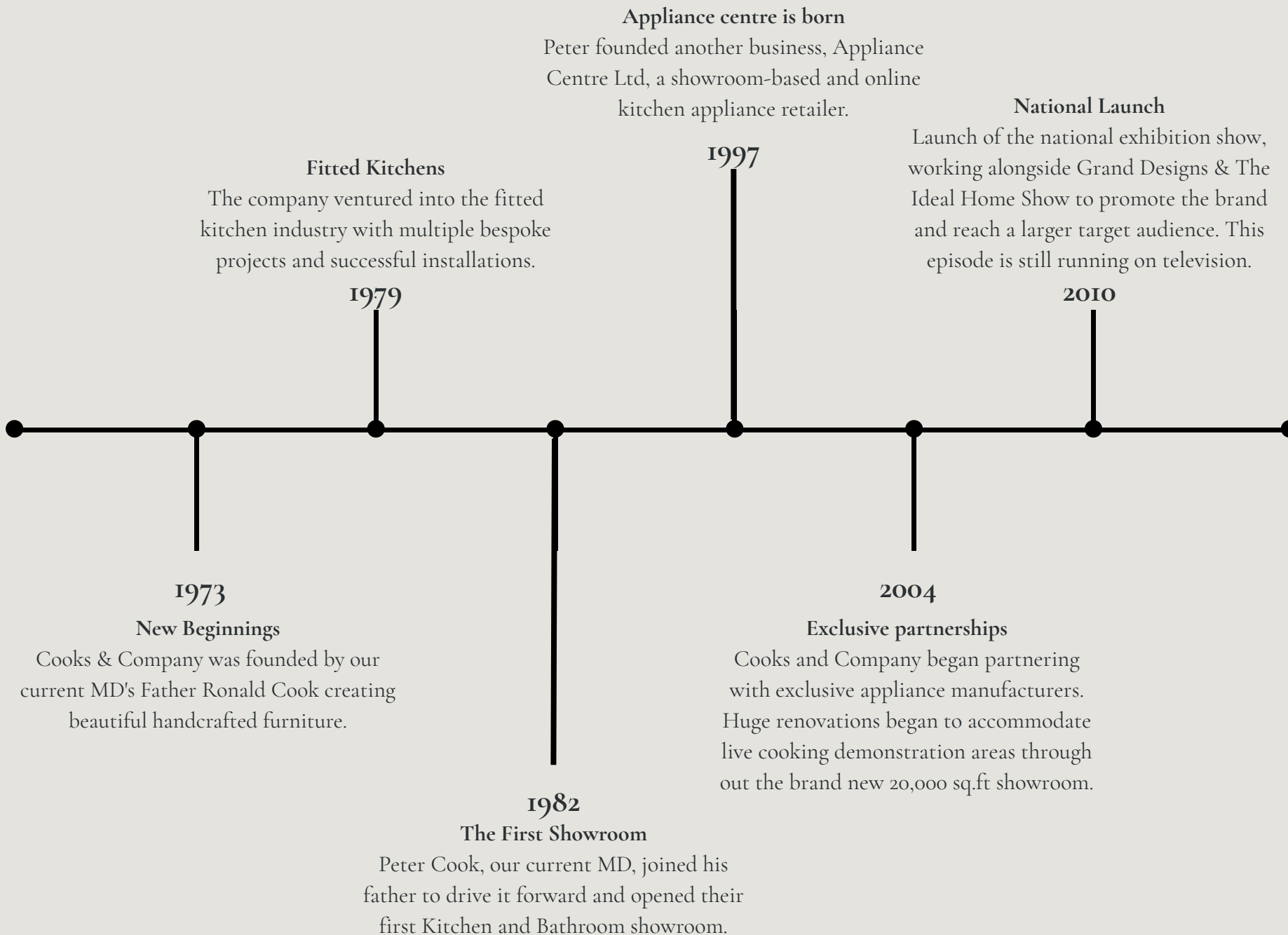


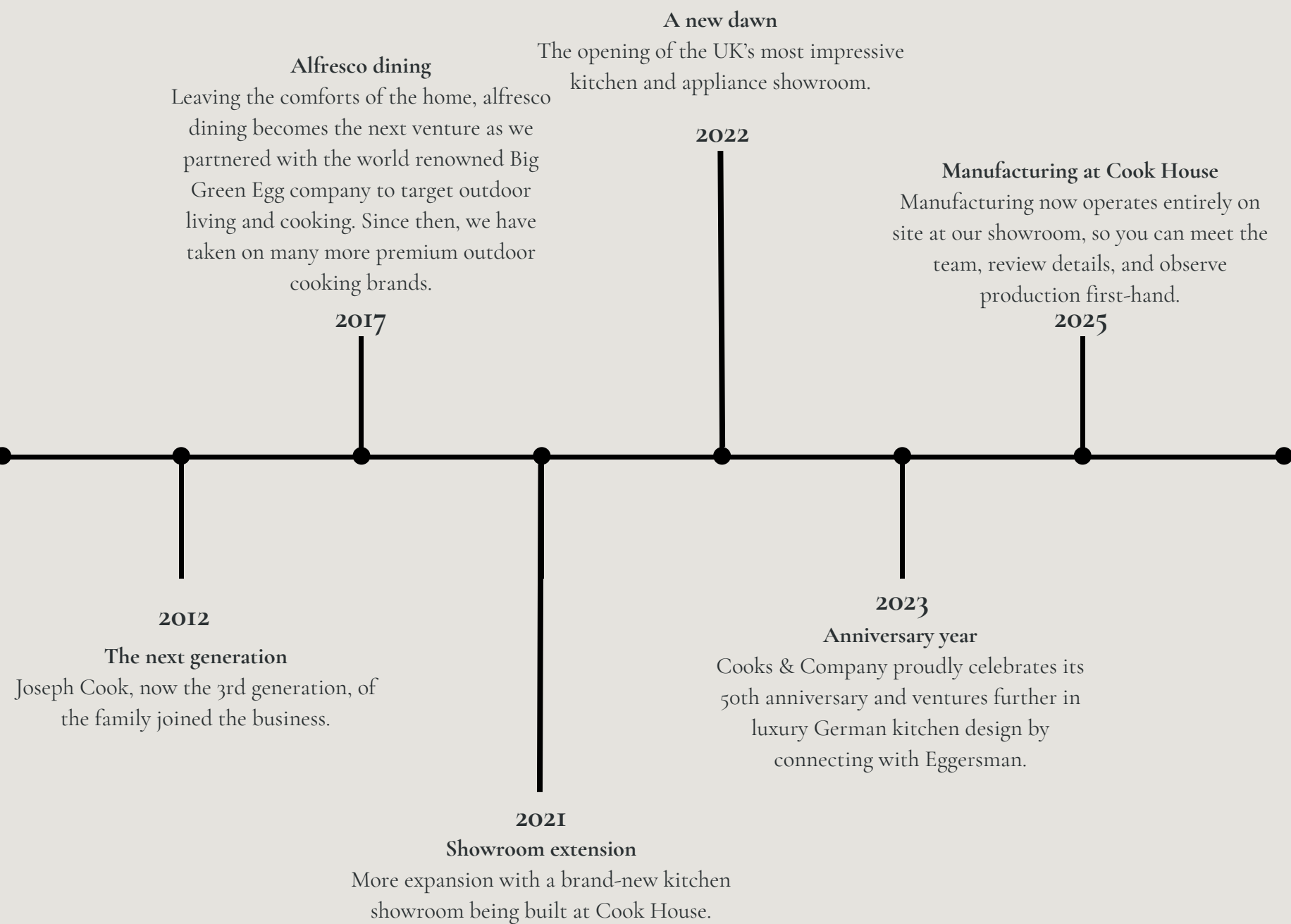
Meet the team behind Cooks & Company. From the people you meet front of house to those working carefully behind the scenes, every part of our business is shaped by the team who bring it to life each day. Each person plays a role in the experience we deliver, whether through service, design, craftsmanship, organisation or the finer details that often go unseen. A team we are incredibly proud of, all striving for the same standard: exceptional service, considered work and projects made to last.

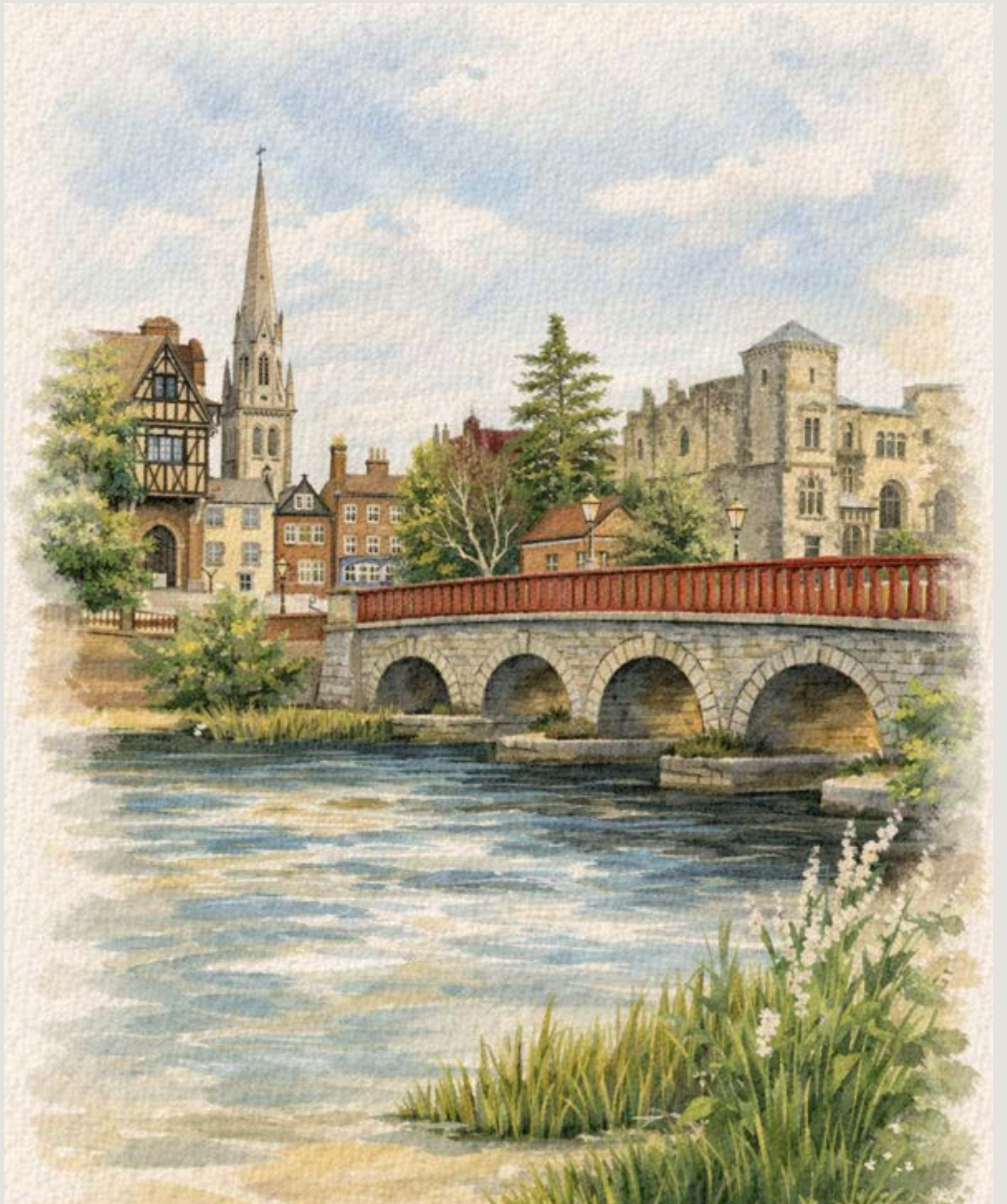


Our Timeline

After over fifty years in operation, our family-run business has evolved to become a trusted industry leader, combining heritage with modern expertise.







Visiting Us

Situated in the busy market town of Newark-on-Trent, our showroom is strategically located at the crossroads of the A1 and A46, easily accessible from all cardinal directions. For those arriving by train, we offer complimentary pick-up from both Newark Northgate and Newark Castlegate train station. We take pride in making the design process feel relaxed and welcoming, with a showroom environment that is comfortable for families as well as clients focused on their project. Our commitment extends to being a pet-friendly establishment, ensuring no one is left out. If you're journeying from beyond the East Midlands, please inform us, and we'll make arrangements to ensure your visit is both enjoyable and worthwhile.



Cooks & Company

A FAMILY BUSINESS

A family business, built on quality, care and long-term relationships.

Founded by Ronald Cook, whose vision laid the foundations of Cooks & Company, the business was carried forward by Peter and is now led by Joe as the third generation. With Rupert set to follow, the same values of craftsmanship, integrity and dedication continue to shape our future.