



# DISCOVER DENALI NATIONAL PARK

A JOURNEY INTO THE SCENIC WILDS  
OF AMERICA'S NORTHERNMOST STATE

Orbridge

# Denali National Park | Itinerary and Highlights *(subject to change)*

**Day 1: ARRIVE IN FAIRBANKS, AK** Welcome to Fairbanks—known as “The Golden Heart of Alaska.” Meet your Orbridge Expedition Leader and fellow travel companions at a welcome dinner, and prepare for your upcoming Denali activities and excursions.  
Overnight: Pike’s Waterfront Lodge (D)

**Day 2: FAIRBANKS | ALASKA RAILROAD | DENALI NATIONAL PARK** With your Orbridge Expedition Leader, board the train to Denali National Park, traversing one of the most scenic stretches of the world-famous Alaska Railroad. Enjoy a rich panoply of views of America’s northernmost frontier as you travel in the upgraded glass-dome train car. Delight in breakfast aboard the train before arriving in Denali. Upon arriving at the park, take a short walk with your Expedition Leader to the Denali National Park Visitor Center for a brief orientation. Afterward take the courtesy shuttle to the Grande Denali Lodge. This evening enjoy a lively dinner where you’ll explore fun and unique features of the park with a presenter from the Murie Science and Learning Center.  
Overnight: Grande Denali Lodge (B,D)

**Day 3: DENALI NATIONAL PARK WILDERNESS EXCURSION**  
Today travel along the Denali National Park Road on a naturalist-guided, back-country adventure for incredible scenery and some of the best opportunities to view the majestic Mount Denali. Redeem your Alpenglöw Restaurant dinner voucher either tonight or tomorrow evening.  
Overnight: Grande Denali Lodge (B,L,D)

**Day 4: DENALI NATIONAL PARK** After breakfast participate in one of the pre-purchased optional excursions or enjoy free time to explore Denali. Later reconvene for wine and dessert as you listen to Alaskan homesteader, Jimmie Hendricks, as he relives his journey and lifelong dream to explore Alaska and make it his home.  
Overnight: Grande Denali Lodge (B,R)

**Day 5: DENALI NATIONAL PARK | TALKEETNA | ANCHORAGE** After an early breakfast journey to Anchorage by motor coach. In Talkeetna enjoy free time to explore the Talkeetna Historical Society Museum and the Walter Harper Talkeetna Ranger Station to learn about mountaineering operations, the scenic Talkeetna river trail, and various shops and cafes in town. In Anchorage visit the Alaska Native Heritage Center. Later gather for a special farewell reception followed by an evening at leisure.  
Overnight: Aviator Hotel (B,R)

**Day 6: DEPART ANCHORAGE** Enjoy a leisurely morning at the hotel before taking the complimentary transfer to the airport for flights home. (B)



## Optional Excursions:

**DogGonelt Dog Sled Tour:** An intimate visit to an Alaskan frontier home to learn about the lives of the world’s greatest athletes, sled dogs, and racing the Iditarod.

**Denali Glacier Landing Flight:** A 100-minute plane tour of Denali, viewing the continent’s deepest gorge, glaciers and valleys, and land on one of Denali’s pristine glaciers.

**Arctic Circle Flight Tour:** Enjoy expansive views of the Brooks Range, Yukon River, and Trans-Alaska Pipeline on this approximately seven-hour air-and-land tour. After crossing the Arctic Circle, land in the Yukon-Koyukuk region and walk with a local resident guide as you tour one of only a few year-round, lived-in communities located this far north.

**Wilderness Wave Raft Tour:** A guided 11-mile rafting trip along the boundary of Denali National Park with panoramic views of Mount Fellows and the Nenana Canyon. Although you’ll encounter the occasional rapid, this activity is mellow enough for all ages. Actively paddle or sit back and relax.

**Canyon Wave Raft Tour:** A guided 11-mile rafting excursion through the Nenana River with spectacular views of Mount Healy and Sugarloaf Mountain. Paddle with the rafting team or sit back and enjoy the ride on the oar boat.

**Denali Wilderness ATV Tour:** Set out on your own automatic single ATV or 2-passenger side-by-side ATV. Riding along trails surrounded by Denali National Park, stop at overlooks for breathtaking 360° views of the Alaska Range. Knowledgeable guides lead you through the rugged terrain and provide opportunities for wildlife photography. Total tour covers about 10 miles with 90 minutes on the trails.

*Not all excursions listed may be available. Availability is also subject to sufficient participation, weather conditions, seasonal suitability and group interests. For flight excursions, weight and minimum age requirements apply.*

(B = Breakfast, L = Lunch, D = Dinner, R = Reception)





## What's Included

- 1 night at Pike's Waterfront Lodge in Fairbanks, 3 nights at Grande Denali Lodge and 1 night at Aviator Hotel Anchorage
- 5 breakfasts, 1 lunch, 3 dinners (including a dinner voucher for Grande Denali Lodge's Alpenglow Restaurant) and 2 receptions
- Rail transport to Denali National Park along the distinguished Alaska Railroad with reserved seating in the upper-level glass-dome car and priority seating in the dining room for breakfast and two complimentary alcoholic beverages (and unlimited non-alcoholic beverages)
- Hotel courtesy shuttle between the rail depot, Grande Denali Lodge, the Denali Park Visitor Center and town
- A full-day guided wilderness tour into Denali National Park
- Deluxe motor coach transport to Talkeetna and Anchorage
- Admission to the Alaska Native Heritage Center
- Services of an Orbridge Expedition Leader
- Gratuities for Orbridge Expedition Leader, local guides, drivers, porters, housekeeping and wait staff for included meals
- Airport transfers for guests arriving and departing during the suggested times

**Orbridge**

### Your Expedition Leader:

Enriched from the wealth of expertise provided by your

Orbridge Expedition Leader, you'll bring home a deeper understanding of the flora, fauna, natural history, and cultural narrative of the rugged Alaskan wilderness.



## Accommodations *(subject to change)*

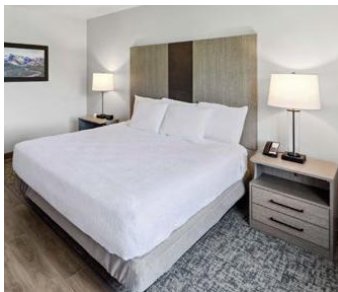
### PIKE'S WATERFRONT LODGE

Situated on the Chena River, Pike's Waterfront Lodge offers unbeatable views and warm, comfortable accommodations. Enjoy hotel amenities including an aromatherapy steam room, fitness room, restaurant, cozy lounge, ATM, 24-hour guest laundry and gift shop.



### GRANDE DENALI LODGE

The Grande Denali Lodge is located just north of the Denali National Park main entrance on the slopes of Sugarloaf Mountain with unparalleled views of the surrounding Denali wilderness and the Nenana River Canyon. Spacious guest rooms, on-site dining, and dedicated staff make the Grande Denali Lodge the perfect place to launch all your adventures. Amenities include a restaurant, a bar and lounge, convenient shuttle services, a self-service laundromat, complimentary Wi-Fi and an espresso/snacks stand.



### AVIATOR HOTEL

Enjoy the ambiance and amenities of this modern hotel, centrally located within walking distance of Anchorage's vibrant dining, shopping and cultural attractions including the Anchorage Museum. Contemporary guest rooms are tastefully designed featuring Alaskan décor and unique artistic touches crafted by local artists.

