



5TH YEAR SUBJECT
CHOICE, TY, LCA AND
PATHWAY'S

Coláiste
Bhaile Chláir



5TH YEAR
SUBJECT
CHOICE-

TRADITIONAL LEAVING
CERTIFICATE

Most student's study 7 subjects for leaving cert

LCVP can be taken as an optional 8th subject

The top 6 subjects are counted for points

LEAVING CERTIFICATE POINTS

Higher Level Grades	Higher Level Points	% Bands	Ordinary Level Grades	Ordinary Level Points
H1	100	90-100%	O1	56
H2	88	80-89%	O2	46
H3	77	70-79%	O3	37
H4	66	60-69%	O4	28
H5	56	50-59%	O5	20
H6	46	40-49%	O6	12
H7	37	30-39%	O7	0

- All subject carry equal points – except for Honours Maths which has a bonus 25 points if you get over 40%
 - Maximum leaving cert points are 625
 - Honours level subjects = 100 points each
 - Ordinary level subjects = 56 points each

WHAT WILL I STUDY?

3 CORE SUBJECTS

English

Irish (unless exempt)

Maths

+

Modern Foreign Language (Generally)

+

3 OPTIONS out of 22 subjects

These options come from Science, Practical Subjects, Arts and Creative subjects, Business Studies and Social Science subjects



SCIENCE SUBJECT OPTIONS

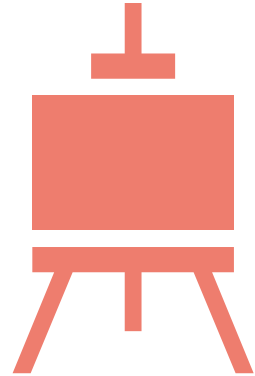
1. Biology
2. Physics
3. Chemistry
4. Physchem
5. Agricultural Science
6. Computer Science
7. Applied Maths



PRACTICAL SUBJECT OPTIONS

1. Construction Studies
2. Design Communication
Graphics
3. Engineering

ARTISTIC AND CREATIVE SUBJECT OPTIONS



Art



Music

SOCIAL SUBJECT OPTIONS

1. History
2. Geography
3. Politics and Society
4. Home Economics
5. Physical Education
6. Religious Education

BUSINESS STUDIES OPTIONS



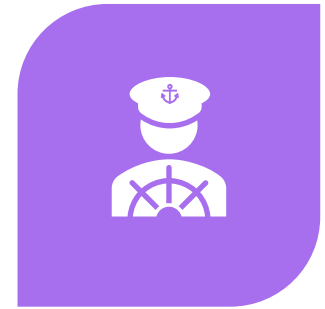
**BUSINESS
STUDIES**



ACCOUNTING



ECONOMICS



LCVP

THINK ABOUT YOUR TOP 5

- After Maths, English & Irish
- Choose your top five subjects in order of preference
- Most will choose a MFL and 4 option subjects
- We will endeavour to grant your top 4 options
- You know the subjects you are best at, discuss with your teachers what they are like in senior cycle
- Attend the subject symposium in school to learn more about each subject from our 5th years



MFL
FRENCH, ITALIAN, SPANISH & GERMAN
55% WRITTEN EXAM, 25% ORAL, 20% AURAL

- A modern Language is essential for some courses in NUI Universities (Galway, Cork, Dublin, Maynooth, RCSI) mainly - Arts, Human Sciences, Social Science, Medicine and Health Sciences and some other degrees.

- Required for Cadets in Army, Navy and Air Corps

- MFL is not required to study most courses in a Technical University

AT LEAST ONE LAB SCIENCE SUBJECT IS REQUIRED FOR THESE CAREERS

(AGRICULTURAL SCIENCE, BIOLOGY, CHEMISTRY, PHYSICS, PHYSCHEM)

Science	Technology	Nursing	Home Economics
Radiography	Physiotherapy	Occupational Therapy	Speech and Language Therapy
Nutrition	Podiatry	Engineering	Agriculture
Computers and IT	Environmental Science	Medical Science	Architecture
PE Teaching	Design and Manufacture		
*Veterinary	*Medicine	*Dentistry	*Pharmacy

* Usually, 2 lab science subjects are preferred

LCVP - 60% PORTFOLIO 40% EXAM

- Leaving Certificate Vocational Programme
- Specific subject requirement gone
- 1 class per week - includes work experience in 5th year

Portfolio - CV, Action Plan, Career Investigation, summary Report plus 2 options - Submitted March of 6th year

Written Examination May - Practice required more so than study

Not accepted as a 6th subject for entry requirements for NUI colleges but points can be counted

Distinction - 66 points H4

Merit - 46 points H6

Pass - 28 points O4



Over 80% of students use LCVP as one of their best six subjects for points.



- There is no easy subject at Leaving Cert level - but if you enjoy a subject then it is easier to put time and effort into that subject
- **Keep your options by taking English, Irish, Maths, Language, Science and your 2 most favorite subjects**
- Think about the level you will study at further down the road

TO HELP YOU DECIDE

- Do your own bit of research on your preferred subjects – Careers portal is very good
- Talk to teachers
- Think about projects and deadlines – managing workload
- Don't choose something because a friend is – make your own choices
- Chat to your family, older siblings who have been through senior cycle
- Submit subject choices on Tyro



USEFUL RESOURCES

- www.colaiстеbhailechlair.com
- www.careersportal.ie
- www.cao.ie
- www.qualifax.ie

School

[All Leaving Cert Subjects](#)[Useful Subject Tips](#)[Guide to Choosing Subjects](#)[Subjects & Career Choice](#)[Subjects by Grade Explored](#)[FAQs](#)

Leaving Cert Subjects

Practical Group

These subjects are 'hands-on' and involve working with tools and machinery on physical things like wood, metals and plastic. They may involve designing, planning and building things.

[Construction Studies](#)[Engineering](#)[Technology](#)

Science Group

These subjects demonstrate how to explore nature using carefully planned methods, and teach the basic methods and findings of scientific investigation.

[Agricultural Science](#)[Applied Maths](#)[Biology](#)[Chemistry](#)[Mathematics](#)[Physics](#)

Elaine Steiro, Franchisee

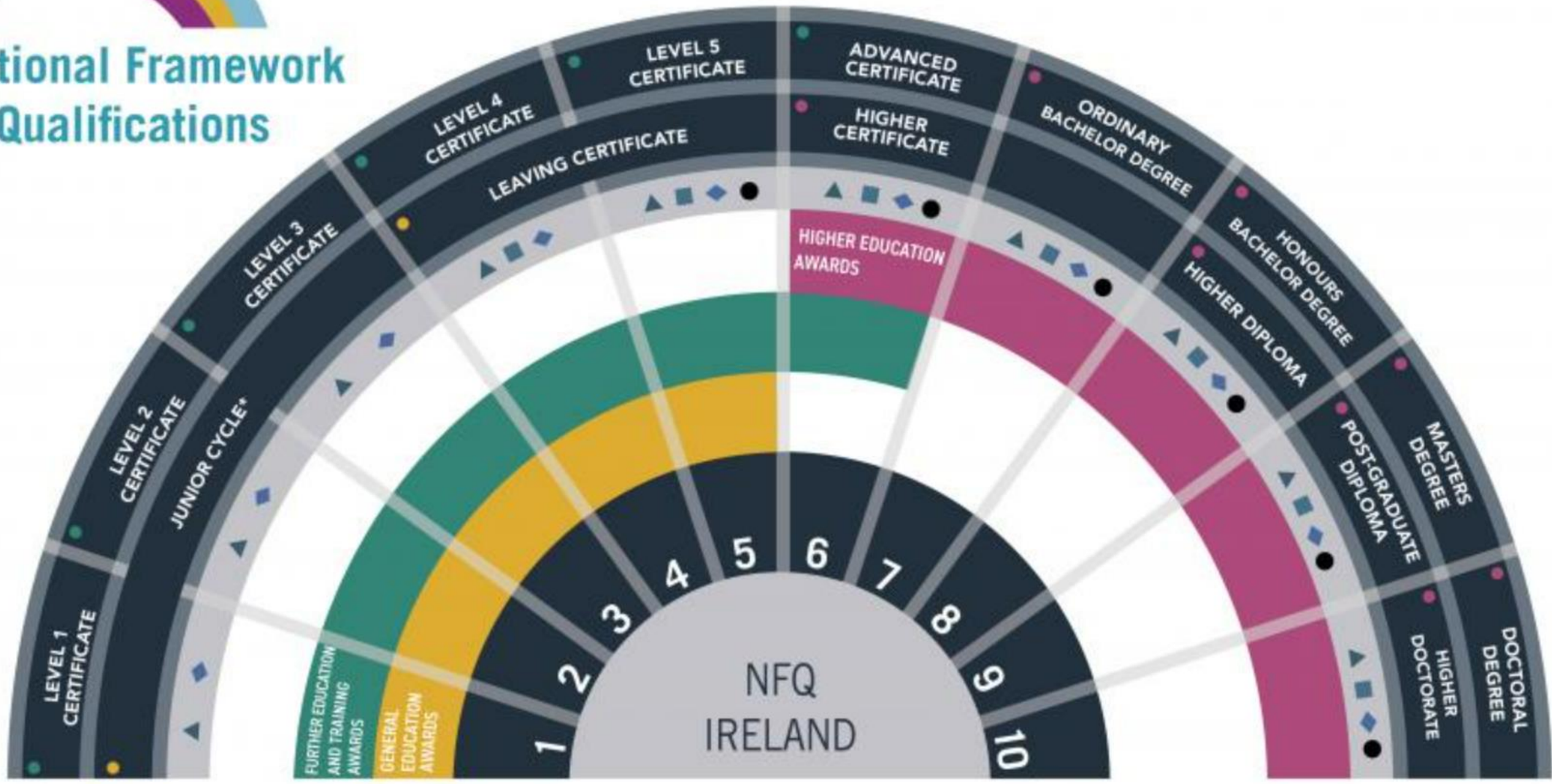
What subjects did you take in school and how have these influenced your career path?

I took Art, Spanish, Business Studies & Home Economics.

I would say that they really didn't influence my career path, however, I did learn from my extra curricular activities that I liked working in groups and I could see how hard work paid off and was very fulfilling.



National Framework of Qualifications



PATHWAY - 1
TRADITIONAL
LEAVING CERT

Junior Certificate (Level 3)

Transition Year – Optional

Traditional Leaving Certificate
(Level 5) – 2-year programme,
7 subjects, max 625 points

Progress into – PLC (5),
Apprenticeship (6), Third Level
(6,7,8) or the World of Work

PATHWAY - 2

LEAVING CERT APPLIED

Junior Certificate (Level 3)

Transition Year – Optional

Leaving Certificate Applied (Level 4) –
2-year programme, Continuous
Assessment with exams, focus on work
experience (1 day each week)

Progress into – PLC (5), Apprenticeship
(6), World of Work
or After a one-year PLC – Third level
(6,7,8)

PATHWAY - 3
PROGRESSING
TO A PLC OR
APPRENTICESHIP

Junior Certificate (Level 3)



Transition Year – Optional



Progress into a PLC (Level 5) or Apprenticeship (Level 6) – once 17 years of age



Progress into Third Level (6,7,8) or the World of Work

LEVEL 5 PLC COURSES

COURSES

PROCEDURES & TERMS

Applied Health Sciences

Advanced Certificate in Animal Science 6M5153
Animal Care: Introduction to Dog Grooming 5M2768
Emergency Care Services 5M4468
Food Science 5M5267
Healthcare Assistant (Health Service Skills) 5M3782
Nursing Studies 5M4349
Occupational Therapy Assistant 5M3782
Physiotherapy Assistant 5M3782

Art & Design

Art and Design: Portfolio Preparation 5M1985
Interior Design 5M5054

Arts and Social Sciences

Applied Social Studies 5M2181
Pre-University Arts - 5M3114
Social, Equality and Disability Studies 5M2181
Social, Policy and Family Studies 5M2181
Social Studies and Youth Work 5M4732
Special Needs Assistant 5M4468

Media

Film and TV 5M18519
Games Development and Design (Creative Media) 5M5048
Global Media and Online Journalism 5M5048
Music Performance and Production 5M2011
Studio and Live Sound Production 5M2149

Sport

Elite Soccer - Performance and Coaching 5M5146
GTI-GUFC Elite Football Professional Development 5M5146
Gym Instructor/Personal Trainer 5M5146
Sports and Physical Therapy 5M5146
Sports Science with Adventure Activities 5M5146
Strength, Conditioning with Performance Analysis 5M5146

Technology: Design & Engineering

Apprenticeship Preparatory Programme: Carpentry/Plumbing/Electrical 5M5010
Computer Aided Design and Architectural Technology 5M1940
Construction Technology / Civil Engineering 5M5010
Construction Technology: Renewable Energies and Engineering 5M5010
Pre-University Engineering 5M2061

Business & Law

Advanced Certificate in Business Management and Accounting 6M4985
Advanced Certificate in Business Management and Information Systems 6M4985
Advanced Certificate in Management, Law and HR 6M4985
Business Accounting 5M2102
Business Studies 5M2102
Business Studies - Marketing and Sales 5M2102
Law and Criminology 5M3789
Legal Studies 5M3789
Office Administration - Medical / Legal Secretarial 5M1997
Office Administration - Secretarial 5M1997
Pre-University Law 5M3789

Fashion

Advanced Certificate in Fashion Buying, Styling and Visual Merchandising 6M4508
Fashion Design 5M3865
Fashion Design and Dress Making 5M3865

Hairdressing & Beauty

Advanced Beauty Aesthetics (Non-Medical)
Beauty Therapy ITEC and QQI 5M3471
Hairdressing 5M3351 (Junior Trades)
Hairdressing and Barbering - Year 1 5M3351
Hairdressing and Barbering Year 2 - Senior Trades - City and Guilds
Theatrical, Media and Fashion Make-Up ITEC Diploma

IT & Computing

Advanced Certificate in Software Development 6M0691
Programming and Software Development with Cyber Security 5M0529

WWW.NOT.IE



BUSINESS

Atlantic TU Galway Roscommon ETB Mayo Sligo Leitrim ETB Donegal ETB	Bachelor of Business (Hons) Level 8 Study Streams in Year 4: <ul style="list-style-type: none">- Supply Chain Management- Enterprise and Innovation- Digital Business	Year 1: Mayo College of FET, Castlebar or FET Centre, Letterkenny or Galway Technical Institute, Galway Years 2 – 4: ATU, Sligo or ATU Donegal or ATU Galway
---	---	--

SUSTAINABLE ENGINEERING TECHNOLOGIES

Engineering, Manufacturing and Construction	Atlantic TU Galway Roscommon ETB Mayo Sligo Leitrim ETB Donegal ETB	B Eng (Hons) Sustainable Engineering Technologies Level 8 Study streams in Year 2: - Manufacturing Industry - Computing	Years 1-2: Sligo College of Further Education FET Training Centre, Letterkenny Galway Community College, Wellpark Road Years 3-4: ATU Galway or ATU Sligo (Manufacturing) ATU, Donegal (Computing)
--	---	--	--

INDUSTRIAL LABORATORY SCIENCE

	Atlantic TU Galway Roscommon ETB Mayo Sligo Leitrim ETB Donegal ETB	Bachelor of Science in Industrial Laboratory Science Level 7 Study streams in Year: - Biopharmaceutical Science - Life Sciences - Biochemistry	Year 1: FET Centre, Letterkenny (Port Road) or Galway Community College, Wellpark Road, Galway or Mayo College of FET, Westport campus Years 2-3: ATU Donegal (Biopharmaceutical) ATU Sligo (Life Sciences) ATU Galway (Biochemistry)
--	---	--	--

NURSING

Health and Welfare	Atlantic TU Galway Roscommon ETB Mayo Sligo Leitrim ETB Donegal ETB	BSc (Hons) in General Nursing Level 8	Tertiary Education Access route: FET Centre, Letterkenny or Sligo College of Further Education or FET Centre, Dunmore, Co Galway Proceed to ATU for 4 Years: ATU Mayo based in Castlebar or ATU St Angela's, Sligo or ATU Donegal
---------------------------	---	--	---

76 Apprenticeships

Logistics

[Lean Sigma Manager L9](#)
[Logistics Associate L6](#)
[Supply Chain Associate L7](#)
[Supply Chain Manager L9](#)
[Supply Chain Specialist L8](#)

Insurance

[Insurance Practitioner L8](#)

Arboriculture

[Arboriculture L6](#)

BioPharma

[Laboratory Analyst L7](#)
[Laboratory Technician L6](#)

Electrical

[Aircraft Mechanics L6](#)
[Electrical L6](#)
[Electrical Instrumentation L6](#)
[Electronic Security Systems L6](#)
[Industrial Electrical Engineer L7](#)
[Instrumentation L6](#)
[Refrigeration and Air Conditioning L6](#)

Engineering

[Engineering Services Management L7](#)
[Farrery L6](#)
[Industrial Insulation L6](#)
[Manufacturing Engineering L7](#)
[Manufacturing Technology L6](#)
[Mechanical Automation and Maintenance Fitting L6](#)
[Metal Fabrication L6](#)

Engineering

[Metal Fabrication L6](#)
[OEM Engineer L6](#)
[Pipefitting L6](#)
[Polymer Processing Technology L7](#)
[Principal Engineer L10](#)
[Sheet Metalworking L6](#)
[Toolmaking L6](#)

Construction

[Brick & Stonelaying L6](#)
[Carpentry & Joinery L6](#)
[Geo-Driller L6](#)
[Painting & Decorating L6](#)
[Plastering L6](#)
[Plumbing L6](#)
[Stonecutting & Stonemasonry L6](#)

[Wood Manufacturing & Finishing L6](#)

Finance

Accounting Technician L6

International Financial Services
Associate L6

International Financial Services
Specialist L8

Hairdressing

Hairdressing L6

Hospitality & Food

Butcher L5

Chef De Partie L7

Commis Chef L6

Sous-Chef L8

ICT

CGI Technical Artist L8

Cybersecurity L6

Network Engineer Associate L6

Software Developer Associate L6

Telecommunications & Data
Network Technician L6

Sales

Retail Supervision L6

Sales L6

Recruitment

Recruitment Executive L8

Motor

Agricultural Mechanics L6

Construction Plant Fitting L6

Heavy Vehicle Mechanics L6

Motor Mechanics L6

Vehicle Body Repairs L6

Property Services

Auctioneering & Property
Services L6