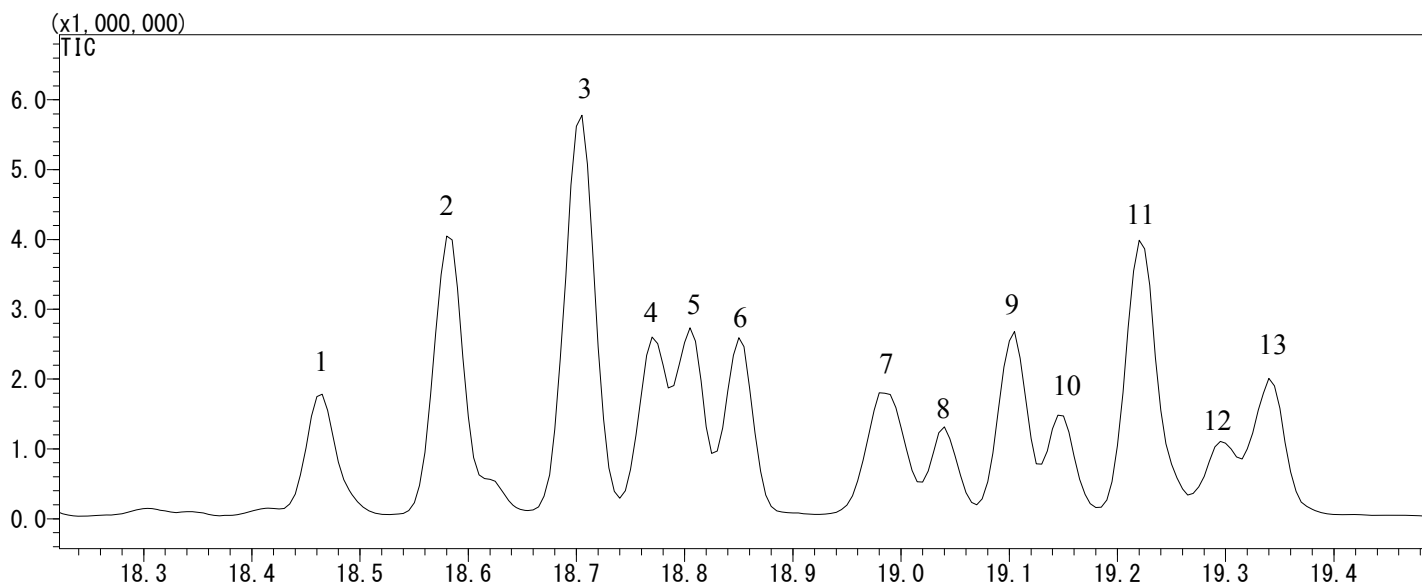


## 4-Nonylphenol

Data No. GA 216-0644



### Conditions

- System** : GC-MS  
**Column** : InertCap 5MS/NP  
0.25 mm I.D. x 30 m df = 0.25 µm  
**Col. Cat. No.** : 1010-18642  
**Col. Temp.** : 50 °C (1 min hold) - 8 °C/min - 280 °C  
**Carrier Gas** : He 36.3 cm/sec  
**Injection** : Splitless 1min  
250 °C  
**Detection** : MS Scan ( $m/z = 35 - 500$ )  
Interface Temp. 280 °C  
**Sample Size** : 100 µg/mL (Isomer Mixture) in Dichloromethane  
1 µL  
**Analyte** :  
1. 4-(2,4-dimethylheptan-4-yl)phenol  
2. 4-(2,4-dimethylheptan-2-yl)phenol  
3. 4-(3,6-dimethylheptan-3-yl)phenol  
4. 4-(3,5-dimethylheptan-3-yl)phenol  
5. 4-(2,5-dimethylheptan-2-yl)phenol  
6. 4-(3,5-dimethylheptan-3-yl)phenol  
7. 4-(3-ethyl-2-methylhexane-2-yl)phenol  
8. 4-(3,4-dimethylheptan-4-yl)phenol  
9. 4-(3,4-dimethylheptan-3-yl)phenol  
10. 4-(3,4-dimethylheptan-4-yl)phenol  
11. 4-(2,3-dimethylheptan-2-yl)phenol  
12. 4-(3-methyloctan-3-yl)phenol  
13. 4-(3,4-dimethylheptan-3-yl)phenol