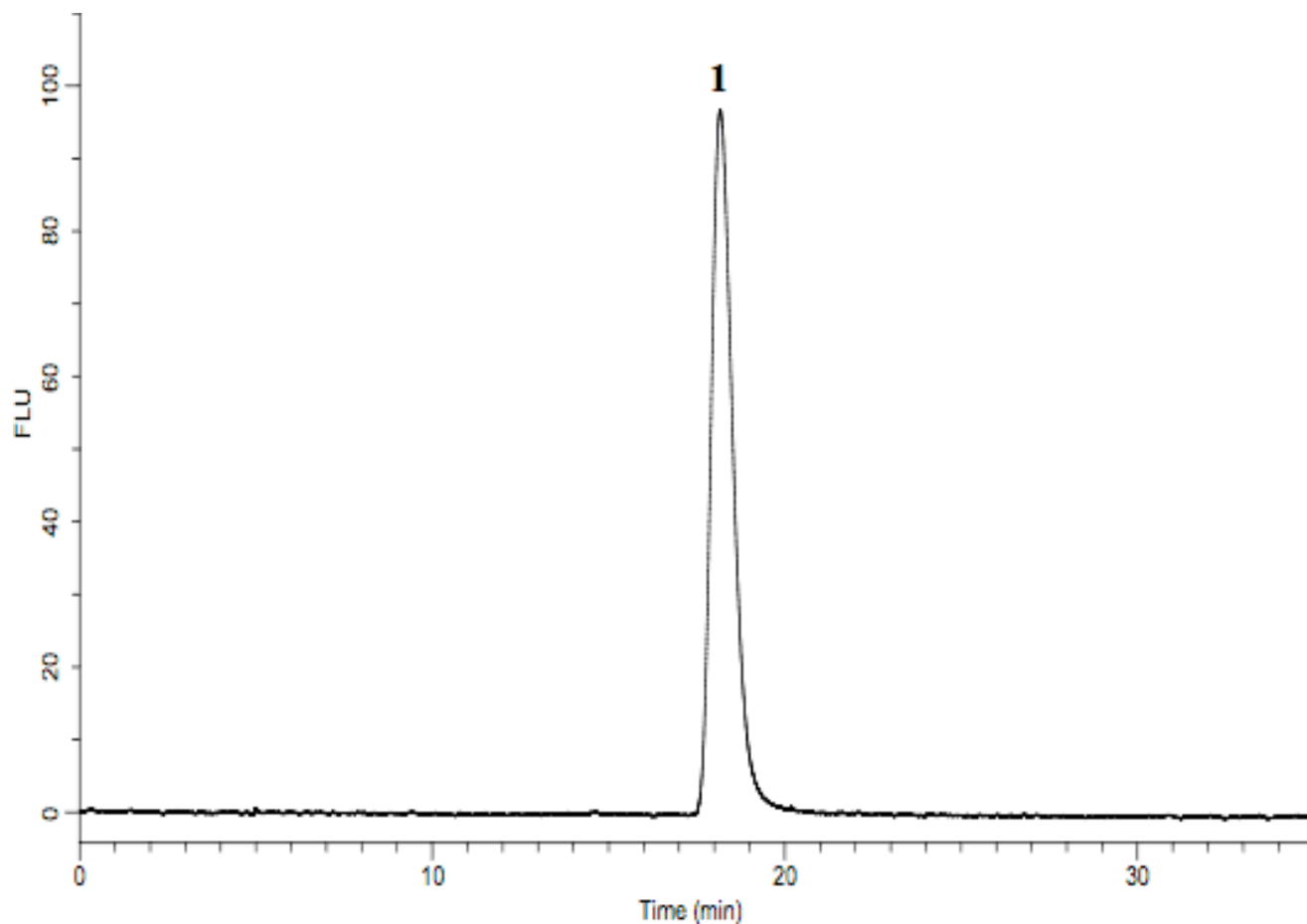


Analysis of Voglibose by Post - Column HPLC (Under the Condition of Japanese Pharmacopoeia)

Data No. LA554-0698



System : GL-7400 system
Column : Asahipak NH2P-50 4E (250×4.6 mm I.D.)
Column Cat. No.:
Eluent : A) CH₃CN
 B) 20 mM Na₂HPO₄ (pH 6.5; 20 mM NaH₂PO₄)
 A/B = 37/63, v/v (Gradient mixer)
Flow rate : 0.5 mL/min.
Col. Temp. : 25 °C
Detection : FL Ex 350 nm Em 430 nm (GL-7453A FL detector)
Injection Vol. : 50 μL
Sample : Voglibose (12 mg/L)

Solutes : 1. Voglibose