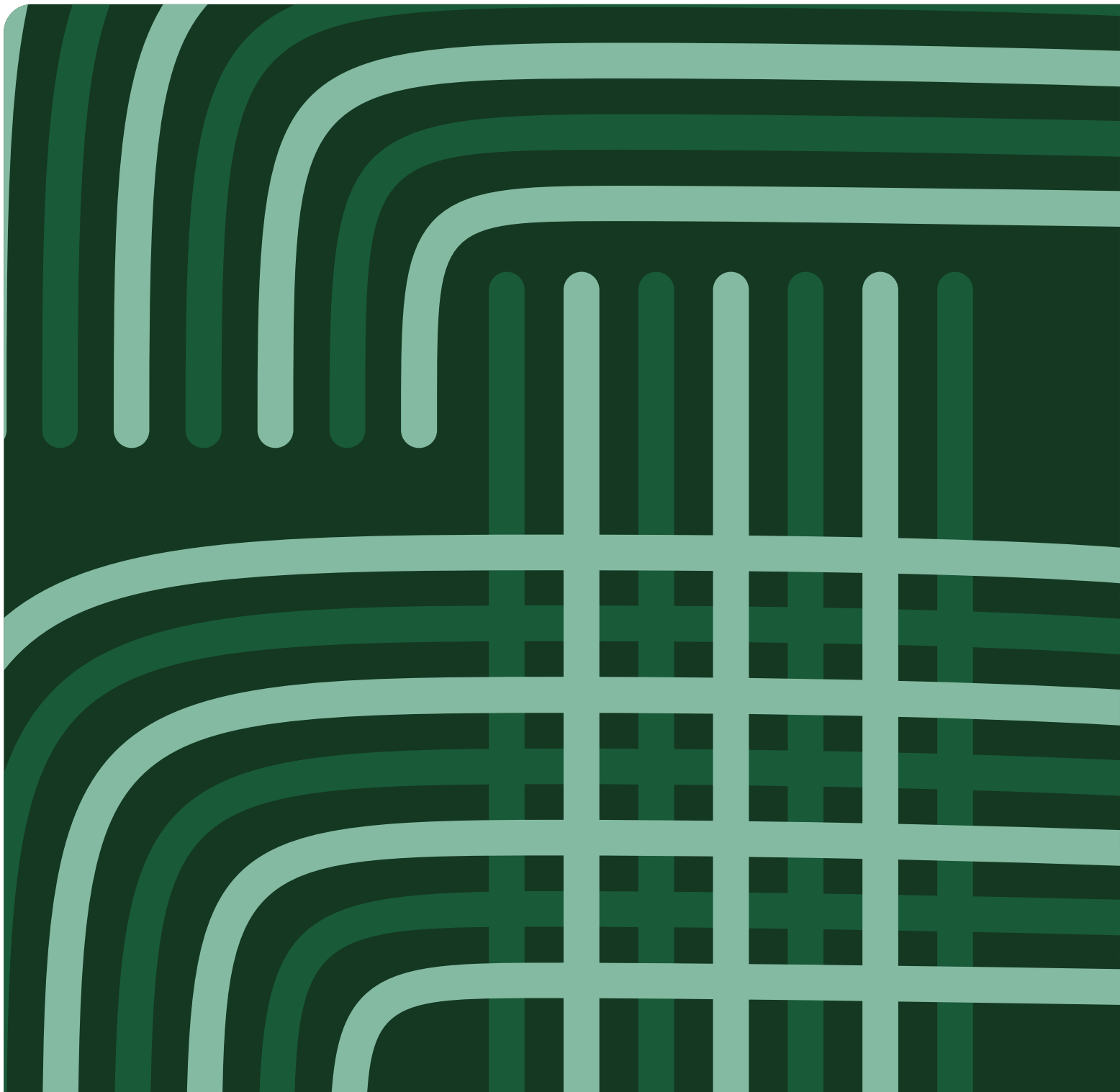




DEUTSCH-SCHWEIZERISCHE INTERNATIONALE SCHULE
GERMAN SWISS INTERNATIONAL SCHOOL | 德瑞國際學校

THE GERMAN APPROACH
A Bilingual Education









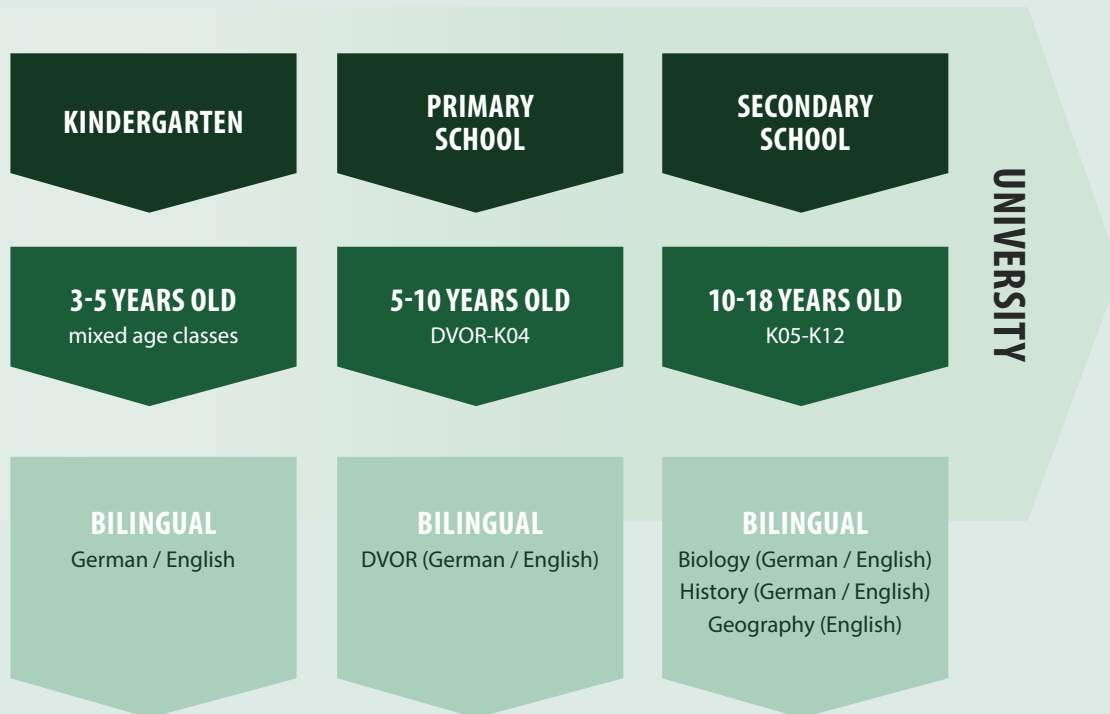
GERMAN SWISS INTERNATIONAL SCHOOL (GSIS)

As part of the German Schools Abroad network, German Swiss International School (GSIS) is a leading dual-language international school in Hong Kong that has offered through-train education from Kindergarten to Secondary since 1969. Priding itself on delivering a unique multicultural education, GSIS is steadfast in pursuing its educational goals, whilst continually evolving to meet the changing needs of 21st century learners.

GERMAN INTERNATIONAL STREAM (GIS)

The GIS delivers a culturally rich bilingual education through a well-rounded curriculum of languages, sciences, mathematics, and art. From Kindergarten to Secondary school, there are three additional programmes that cater to the different age groups of children where no prior knowledge of German is required. Students will graduate with the German International Abitur diploma (DIA) which is certified by the German government, and recognised and accepted at top universities worldwide.

EDUCATION PATH IN THE GERMAN INTERNATIONAL STREAM







WHY GIS?



Bilingual education and diploma



The only international school in Hong Kong to offer the globally accepted German International Abitur diploma (DIA)



Multicultural environment where all nationalities are welcome



Intimate class sizes to provide the best learning atmosphere



No prior knowledge of German required (Kindergarten, CLIPPY and Fast Track programmes specifically)



German universities among the best in the world where an education resident visa is provided, and tuition is offered gratuitously by the German government



GERMAN INTERNATIONAL ABITUR (DIA)

Certified by the German government, DIA graduates will be bilingual in German and English which allows them attractive university options worldwide including in the United States, Canada, the United Kingdom and all German-speaking countries. Germany is an economic powerhouse where university education is offered gratuitously.



GERMAN INTERNATIONAL STREAM (GIS)

No prior knowledge of German required for specific age groups. German is the primary language of Instruction where some subjects are taught in English in senior years.

German International Abitur (DIA)
Ministry of Education of the Federal Republic of Germany
(Democratic Elected Government)

Required across K11-12
Higher Level •

German, English, Mathematics

Standard Level •

7 elective subjects: History, Geography, Biology, Chemistry, Physics, French, Mandarin, Music, Art, Ethics, Religion, Physical Education

Accepted by prestigious universities worldwide •
German universities offer education visa residency & tuition offered gratuitously by German government

Universities may offer credit for successful exam •
results & national awards

5 exams (3 written & 2 oral) •
50% must be conducted in German •

ENGLISH INTERNATIONAL STEAM (EIS)

All classes are taught in English and German is included in the curriculum as a compulsory foreign language study.

International Baccalaureate Diploma Programme (IBDP)
International Baccalaureate Organisation
(Private Entity)

Required across Y12-13

• **Higher Level and Standard Level**

- Choice of 6 subjects, 3 Higher Level & 3 Standard Level:
Language & Literature, Language Acquisition, Individuals & Societies (Social Sciences), Sciences, Mathematics, The Arts

• **Additional Requirement:**

Theory of Knowledge Course, Extended Essay, Creativity, Activity and Service Projects

• Accepted by prestigious universities worldwide, including Germany, depending on the choice of focused IB subjects

• Universities may offer credit for IB Higher Level classes with a score of 6 or 7

• More than 6 exams - 3 papers for Higher Level & 2 for each Standard Level subject
• Language exams are written & oral



ADMINISTERED & AWARDED BY



PROGRAMME & SUBJECTS



COLLEGE ENTRY



COLLEGE CREDIT



EXAMS



THE GERMAN EDUCATION PATH & LANGUAGES

We offer a through-train education path where students will start their journey in Kindergarten, followed by Primary (Grundschule) and Secondary (Sekundarstufe).

Age Group

Year Group

Language of Instruction

1st Foreign Language***

2nd Foreign Language***

Optional Foreign Language

Subject/s Taught in English

Subject/s Taught
Bilingually in German & English

Extracurricular Activities
(Optional)

| KINDERGARTEN | PRIMARY | | | | | SECONDARY | | | | | | | |
|------------------|------------------------------------|--------|-------|----------|--------|-----------|---|-----------|---------|---------|---------|---------|---------|
| 3 - 5 | 5 - 6 | 6 - 7 | 7 - 8 | 8 - 9 | 9 - 10 | 10 - 11 | 11 - 12 | 12 - 13 | 13 - 14 | 14 - 15 | 15 - 16 | 16 - 17 | 17 - 18 |
| DKG* | DVOR** | K01 | K02 | K03 | K04 | K05 | K06 | K07 | K08 | K09 | K10 | K11 | K12 |
| German & English | German & English | German | | | | German | | | | | | | |
| - | English (Group by Language Levels) | | | | | English | | | | | | | |
| - | - | - | - | - | - | - | French / Latin / Mandarin (Choice of One) | | | | - | - | |
| - | Mandarin (ECA) | | | Mandarin | | Mandarin | French or Mandarin | | | | | | |
| - | - | - | - | - | - | - | - | Geography | | | | | |
| - | - | - | - | - | - | - | Geography | - | History | | | | |
| - | - | - | - | - | - | Biology | | | | | | | |
| - | German | | | | | German | | | | | | | |
| - | English | | | | | English | | | | | | | |
| - | Mandarin | | | - | - | Mandarin | | | | | | - | - |

* Bilingual classes - one teacher, one language ** Bilingual classes - 50% German, 50% English *** Mandatory

GIS KINDERGARTEN





We encourage our children to be confident and independent learners supported by a broad and well-balanced curriculum. Each child is individual and learns at his/her own pace. We therefore emphasise on learning through play in a child-centred, strength based and holistic approach. Our core values are resilience, self-awareness, empathy, independence, and responsibility.

We offer a mix of teacher lead activities and child initiated free play which include elements of Montessori and Reggio Emilia pedagogy. Following the German Curriculum of the State of Thuringia, we emphasise 'in the moment planning' to commensurate each child's abilities, needs, and stage of development. We foster intercultural learning and German culture & traditions and we offer theme and project-based learning in order to take the children's interests into account. Students are taught bilingually in German and English.



A young child with dark hair, wearing a red t-shirt, is looking at books on a shelf in a library. The background is filled with colorful book spines.

CURRICULUM



Personal, social, emotional development



Communication, language & literacy



Physical Development



Mathematics



Understanding the world



Expressive arts and design

THE SCHOOL DAY

07:15 – 07:35

Arrival

07:40 – 09:00

Teaching Time

09:00 – 09:30

Snack Time

09:30 – 10:30

Playground / Outdoor Play

10:30 – 12:30

Teaching Time

12:30 – 12:50

Dismissal

Subject to change.

FACTS



No entrance assessment needed



Bilingual classes - dual-immersion (50/50) in German / English



One teacher per language - native speaking teaching staff



Classes of mixed age groups (2.8 to 5 years)



Maximum class size of 20 students



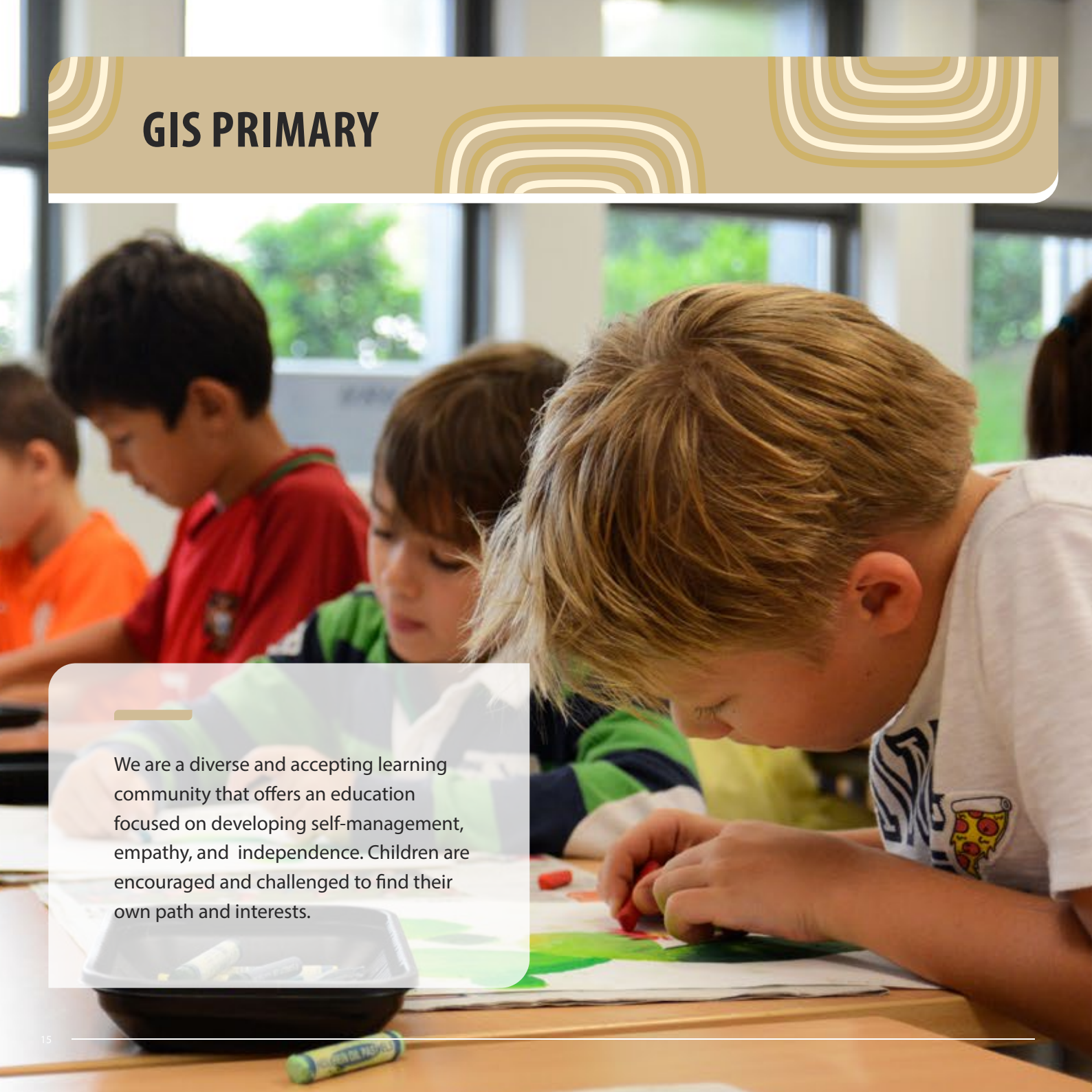
PARENT QUOTE

“

I particularly appreciated that the teachers provided guidance to the children and encouraged them to use different methods to come to a solution in order to build on their critical thinking and creativity.”

Olive, mother of Isabel and Sofia
(DVOR and GKG)

GIS PRIMARY

A photograph of a classroom where several children are sitting at a table, focused on a project. In the foreground, a young boy with blonde hair is leaning over, using a red marker to draw on a piece of paper. He is wearing a white t-shirt with a pizza graphic. To his left, a girl with dark hair is also working. In the background, other children are visible, including one in a red shirt and another in an orange shirt. The room has large windows in the background, letting in natural light. A black bowl containing markers is on the table in the foreground.

We are a diverse and accepting learning community that offers an education focused on developing self-management, empathy, and independence. Children are encouraged and challenged to find their own path and interests.

CURRICULUM



Individual support and attention with a favourable teacher to student ratio



Exclusively educated in German with exposure to a rich and comprehensive English and Mandarin language curriculum



Students are taught life skills including responsibility, independence, and be inquisitive through regular activities, duties, and self-management



Tailor-made peer learning plans where students grow at their own pace



Open and inclusive class community to share opinions freely



Celebrating an exchange of cultural traditions from Europe and Asia through festivals, events and learning best practices



PRE-PRIMARY (DVOR)

The GIS understands the importance of transitioning from Kindergarten to Primary (K01) where students are carefully prepared with a programme called DVOR. This dedicated year helps DVOR students lay the foundation of a natural continuation of their personal, social, and competence development to the next chapter in their lives to primary school. Pre-primary lessons are designed in such a way that the children are gradually brought closer to the learning and living environment of the school where positive self-image is taught to help expand their commitment and motivation. Considering the level of development and personal characteristics, children are made familiar with the many differences between kindergarten and school. They learn to understand the changes in space and time, didactic-methodical arrangement, and social relationships.



CULTURAL AND LANGUAGE INTEGRATION PROGRAMME IN PRIMARY YEARS (CLIPPY)

As a German language immersion programme, children with no prior knowledge of German are offered a chance to be supported by foreign language lessons of Deutschals Fremdsprache (DaF). It delivers an outstanding education that transforms lives, as well as minds, and develops critical thinking. Students are fully integrated in a multicultural environment and become part of a nurturing community.



Suitable for children 6-8 years old (K01- K03 in the German International Stream)



No prior knowledge of German required



Optimal language learning support with intimate class size



Solid entry point into multilingualism, an advantageous life skill

THE SCHOOL DAY | K01-K04

07:35 - 08:15

Lesson 1

08:15 - 08:55

Lesson 2

08:55 - 09:25

First Break and Snack

09:25 - 10:05

Lesson 3

10:05 - 10:45

Lesson 4

10:45 - 11:15

Second Break and Snack

11:15 - 11:55

Lesson 5

11:55 - 12:35

Lesson 6

12:35 - 13:15

Lesson 7 or Afternoon Activity
(ECA or AA)

13:15 - 14:00

Lunch Break

14:00 - 15:20

Afternoon Activities (ECA or AA)

Subject to change.

FACTS



Based on the German curriculum of the federal state of Thuringia and approved by the KMK (Conference of Ministers of Education)



The primary education encompasses pre-primary (DVOR) and grades 1-4 (K01-K04)



In K01-K04 all subjects are taught in German (German, Maths, General Studies, Social Learning, Art, Physical Education, Religious Studies or Ethics, ICT, and Music). English and Mandarin are taught by native-speaking teachers



Pre-primary programme (DVOR) is bilingual - German and English



Development areas: Language and Speaking Abilities, Cognitive Perception, Social, Emotional and Learning Skills, Motor Skills, and Movement



PARENT QUOTE

“

We noticed in particular how her independence and self-esteem improved a lot, and she has made friends very quickly.

”

Emmy, mother of K01 CLIPPY student Allison

GIS SECONDARY





We focus on academic success as well as developing global citizens who would become confident and successful leaders of tomorrow. Students take responsibility for their own learning and actions, respect others and celebrate differences and diversity. We are also the only school in Hong Kong to offer the German International Abitur diploma (DIA), which is recognised worldwide as an excellent pre-university qualification. Our bilingual approach teaches students to learn half of the subjects in German and half in English.

CURRICULUM



German Languages (English, French, Mandarin)



Mathematics & Sciences (Biology, Chemistry, Physics)



Social Studies (Geography, History, Ethics, Religious Studies)



Music & Art



Physical Education



FAST TRACK PROGRAMME

This is an accelerated German learning experience designed for Secondary international students, who have little to no prior knowledge of German. It features German language courses that are integrated into the interdisciplinary curriculum, alongside German speaking students to cultivate a language-rich learning environment.



Suitable for children 11-12 years old (K06 in the German International Stream)



Bilingual education where no prior knowledge of the German language is required



Intimate class sizes where the student to teacher ratio provides the best learning environment



Solid opportunity to gain access to excellent universities in Germany and worldwide

THE SCHOOL DAY

07:40 – 08:20

Lesson

08:25 – 09:05

Lesson

09:05 – 09:20

First Break

09:20 – 10:00

Lesson

10:05 – 10:45

Lesson

10:45 – 11:05

Second Break

11:05 – 11:45

Lesson

11:50 – 12:30

Lesson

12:35 – 13:15

Lesson

13:15 – 14:00

Lunch

14:00 – 14:40

Lesson

14:40 – 15:20

Lesson

Subject to change.

UNIVERSITY GUIDANCE & ACCEPTANCE

Students enjoy the full support of our University Guidance Team and we celebrate the breadth of destinations that our students take. We provide a structured programme to enable students to make the right choices beyond GSIS. Our team's extensive professional networks and the close relationships fostered with universities around the world help students in the right direction while achieving their objectives.



STUDENT QUOTE

“

I had zero knowledge of German before entering GSIS two years ago, and now I have mastered all the course content taught in German.

”

Noemi, Fast Track student



HOUSE SYSTEM

Designed to foster team and community spirit as well as promote positive social behaviour. All students and staff are allocated to one of four houses - Lion, Dragon, Tiger and Phoenix - and will remain in their allocated house throughout their time at GSIS.



EXTRACURRICULAR ACTIVITIES (ECAs)

Having a wide selection of extra-curricular activities is important because it helps students to be more connected and develop skills beyond the curriculum, creating higher enjoyment and engagement. ECAs include basketball, drama club, orchestra, choir and more. Universities also consider them during their admission process.







FACILITIES

The Peak campus consists of three buildings, including the Upper Building, Middle Building and Lower Building. The Pok Fu Lam Campus is the permanent home of Kindergarten & DVOR/Y01. Our comprehensive facilities include sports halls, indoor swimming pool, auditorium, libraries, outdoor playgrounds and a cafeteria. Students can also freely use laptops and computers, teachers are able to utilise a variety of multimedia technologies to support their teaching, and classrooms are fitted with interactive smartboards.

PARENTS' COMMITTEE

The Parents' Committee sponsors and organises events in a social setting to strengthen the community of GSIS parents and meets quarterly. Activities vary and include hikes and walks, coffee mornings, lunches and dinners, book club, shopping trips, and golf days.

KLASSENFLEGSCHAFT (KPR)

The Klassenpflegschaft system is designed to promote an atmosphere of mutual support and trust amongst all members of the school: parents, teachers, Heads of Department, Deputy Principals, the Principal and the Association Board. It operates at different levels: the class level, the departmental level, and the school level.





ALUMNI

The GSIS Community continues far beyond the end of our students' time and we have an active alumni programme. We are committed to supporting former GSIS students and staff with lifelong friendships and opportunities through information, professional networks, events and reunions while nurturing a spirit of unity and community.

ADMISSIONS





At GIS we are an inclusive community where we welcome all nationalities and applications are not restricted to certain passport holders.

- Applications are accepted throughout the year, however we suggest applying at least 6 months prior to the anticipated commencement date
- Through-train school from Kindergarten to Secondary
- Non-selective with no entrance assessments required
- Applicants will be invited to meet with the Head of School
- Minimum age of entry into Kindergarten is 2 years 8 months, provide places are available
- Primary children must have turned 5 years of age by 31 August of the year of entry
- School tours are organised upon request on an individual basis

CONTACT

Admissions Department

📍 German Swiss International School
Peak Campus, 11 Guildford Road, The Peak, Hong Kong

✉️ admissions@gsis.edu.hk

☎️ +852 2180 0511



www.gsis.edu.hk