

# FIELD NOTES

ISSUE 1 | JULY - AUGUST 2025

## SEA TO SUMMIT

**NEW Frontier  
Ultralight Collapsible  
1L Pot Cook Set**

Lightweight and space-saving  
for lovers of the backcountry







# CONTENTS

## **Our Brands**

Sea to Summit distributed brands

01

## **It's the Business**

A message from our leadership team

03

## **New Product Development**

New product showcase

06

## **Spotlight**

Featured products & offers

16

## **Out & About**

Recent marketing activations

28

## **Connect**

Sea to Summit team and contacts

30

## **VISION:**

Leading design that delivers better solutions, inspiring and equipping outdoor enthusiasts to explore the world.

# OUR BRANDS







# IT'S THE BUSINESS

## Welcome to the First Edition of The Sea to Summit Field Notes

I'm proud to introduce the launch of our new bi-monthly digital journal—created to keep you informed, inspired, and more connected with our business than ever before.

In today's fast-paced market, product ranges evolve quicker than ever, often outpacing the timelines of our annual printed catalogue. This digital format is our way of keeping you up to date in real time—with the most relevant product releases, marketing initiatives, go-to-market plans, and key business updates.

But more than that, this journal reflects our ongoing commitment to partnership. We know that great outcomes are built on shared insight,

strong alignment, and trust. This is one way we're aiming to be closer to you—our valued customers and retail partners—by making it easier to see what's coming, where we're headed, and how we can succeed together.

We're excited about what's ahead and the opportunity to keep building momentum with you. Thank you for your continued support.



**Scott Greasly**  
General Manager APAC & CCO



# SEASON 26

## FORWARD ORDER ANNOUNCEMENT

We're excited to launch our latest Forward Order Program, featuring new product releases arriving in February next year.

As a trusted partner of Sea to Summit, this program is designed to help you plan, secure your inventory early, and maximise your sales in the upcoming season.

### S26 Season Forward Order Program offers:



✓ **Priority Access to New Products**

Be among the first to carry our new and most in-demand gear for 2026.



✓ **Priority Inventory Allocation**

Lock in your top-selling SKUs before the season starts.



✓ **Exclusive Early-Buy Incentives**

Enjoy special pricing and promotional support for qualifying pre-orders.



✓ **Improved Sell-Through Support**

Marketing assets, staff training, and merchandising resources included.



### Program Timeline:

**Forward Order Window Opens:**

1st August 2025

**Order Deadline:**

31st August 2025

**Estimated Delivery:**

Choose your shipping window from February to June

**Call to action:**

Contact your Account Manager directly for more details

## WE'D LOVE YOUR FEEDBACK

Our 5-minute survey is now open, and we'd appreciate your thoughts on what's working well—and where there's room for improvement. Whether it's suggestions, concerns or opportunities, your input will help shape how we support you in the year ahead.

Responses are confidential, and you can choose to remain anonymous.

Thank you for your continued partnership.

[COMPLETE OUR SURVEY](#)









## NEW FRONTIER ULTRALIGHT COLLAPSIBLE 1L POT COOK SET

Add preparing meals to the list of ways you're improving your essentials kit on the trail this season.



The Frontier Collapsible One Pot Cook Set is the ultimate cook-eat-drink system: the 1L pot is perfectly shaped and sized to work as a bowl and provides space for the collapsible cup and aluminium spork to nest inside. The pot's Click Safe handle ensures a firm grip on hot meals. The pot uses a hard anodised aluminium base for efficient heat transfer and fast boil times, while the food-grade silicone sidewalls allow it to collapse down for easy packing. The set is ideal if you are prioritising weight and space when heading out on solo missions in the backcountry.

**RRP \$149.99**

**ORDER NOW**

DOWNLOAD ASSETS

### Features:

- Ideal for storage in a pack or bike bag, the set packs flat to just over 2.5cm / 1" high for when space is limited
- Weight: 259g | Packed dimensions 15.1 x 14.2 x 5.3cm
- Fully functional pot with LidKeep and Click Safe Handle for a secure grip
- Perfect size and shape for solo camp cooking. Doubles as a bowl for easy clean up
- Includes a collapsible Frontier cup and a compact hard anodised aluminium short spork
- Hard anodised aluminium pot base and lid heats effectively for more efficient fuel use, and easier thermal control
- Food-grade, non-PFAS durable materials for long lasting performance
- Click Safe Handle provides a firm grip, and can be reversed to hold the lid in place for rattle-free, compact transport

HARD ANODISED  
ALUMINIUM

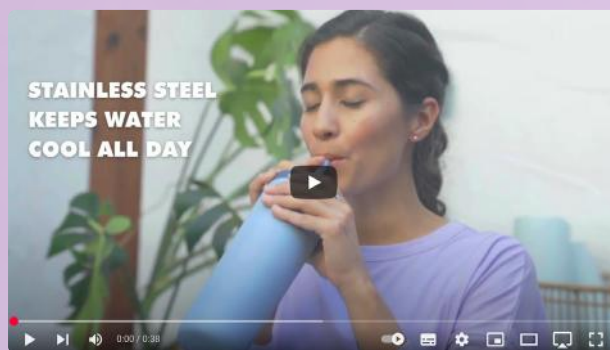
FOOD GRADE  
HEAT RESISTANT  
SILICONE







# STAINLESS STEEL WATER FILTER TUMBLER



## GO SERIES

## Introducing the first- ever water tumbler that filters while you sip.

The LifeStraw Go Series Water Filter Tumbler is independently tested to remove microplastics, bacteria, and more—so you can fill up safely when you need it most. This 18oz stainless steel tumbler keeps water cool all day, fits conveniently in a car cupholder, and improves the taste of even the most questionable tap water.



YOUR PURCHASE HAS IMPACT  
1 PURCHASE = 1 YEAR  
SAFE WATER FOR 1 CHILD



High quality  
stainless steel

Fits in standard  
cupholders

Leak resistant straw

Membrane microfilter  
protects against  
99.999999% of bacteria,  
99.999% of parasites,  
99.999% of microplastics,  
silt, sand and cloudiness.

Double wall vacuum  
insulation keeps your water  
cool all day. Not intended  
to keep liquids hot, as heat  
inside bottle can cause  
pressure when opening  
after a few hours.

Activated carbon filter protects against  
chlorine, organic chemical matter, and  
removes odors for improved taste

## Colours



Laguna Teal



Thistle Purple



Icelandic Blue

## Features:

- 18 fl oz | 500 mL
- Weight: 1.07 lbs | 468 g
- Height: 11 in | 30.3 cm (including straw)
- Diameter: 3.4 in | 8.6 cm
- Replaceable filters & parts
- Includes: stainless steel tumbler, BPA-Free membrane microfilter, activated carbon filter, cap and drinking straw

**RRP \$99.99**

**ORDER NOW**

**DOWNLOAD ASSETS**





THE ORIGINAL CHAIR ONE

# (re) Imagined

Combining **(re) Tension Design** with repurposed aluminium, we've revolutionised this classic into a more stable, comfortable sitting experience.





# What's New

## EVEN MORE COMFORTABLE

Our new-(re) Tension Design provides a second tension line that distributes weight around the frame for superior comfort.

## EASIER TO GET IN & OUT

The frame is 30% taller than the original Chair One, which makes sitting down and standing up effortless.

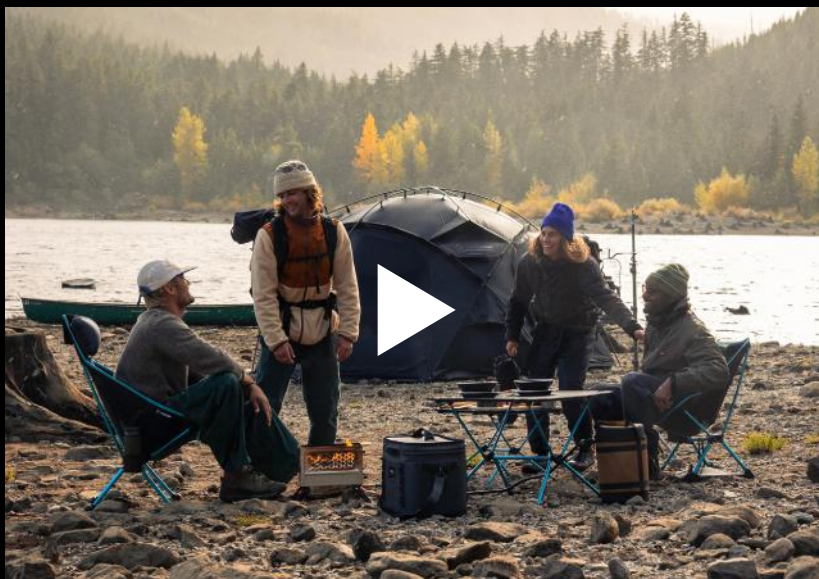
## STABLE & STRONG DESIGN

Redesigned hubs provide more stability, while DAC aluminium alloy merges strength with durability.

## SUSTAINABLY MADE

A repurposed aluminum frame crafted from factory waste that would have otherwise been discarded

[DOWNLOAD ASSETS](#)



Chair One (re)



\$179.99

[ORDER NOW](#)

Chair One Highback (re)



RRP \$229.99

[ORDER NOW](#)

# NEW PRODUCT DEVELOPMENT



## DEFY



**DESCRIPTION:** A cambered entry level strap shoe for all around climbing.

**VOLUME:** Medium

**MATERIAL:** Vegan



### SPECIFICATIONS

Upper: Synthetic  
Midsole: 1.6mm plastic full length  
Outsole: 3.5mm TRAX SAS Rubber  
Weight: 215g per shoe  
EU: 37-48.5 + 49.5

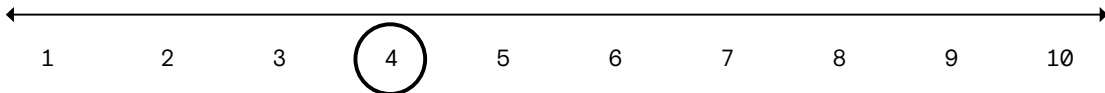
ITEM NO. 66-00000062501

\$189.99 RRP

ORDER NOW

### PSR 04

SENSITIVE  
SOFTER  
SMEARING



POWERFUL  
STIFFER  
EDGING



## DEFY LV



**DESCRIPTION:** A cambered entry level strap shoe for all around climbing.

**VOLUME:** Low

**MATERIAL:** Vegan



### SPECIFICATIONS

Upper: Synthetic  
Midsole: 1.6mm plastic full length  
Outsole: 3.5mm TRAX SAS Rubber  
Weight: 215g per shoe  
EU: 35.5-46.5

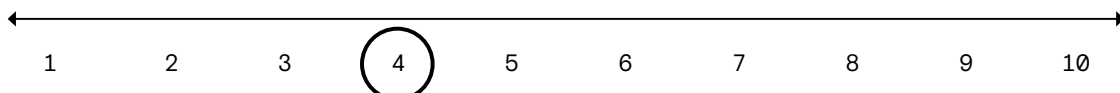
ITEM NO. 66-00000062502

\$189.99 RRP

ORDER NOW

### PSR 04

SENSITIVE  
SOFTER  
SMEARING



POWERFUL  
STIFFER  
EDGING







## MOMENTUM CLIMBING SHOES

Designed for ultimate comfort, our Momentum climbing shoes combine a neutral flat last with breathability and engineered knit, making them ideal for climbers taking their first step toward life in the vertical.



### MEN'S MOMENTUM



DOWNLOAD ASSETS





### Women's Momentum Climbing Shoes

While the Momentum Velcro climbing shoe was built with ultimate comfort in mind; it excels in performance. With an engineered knit tongue and a micro suede upper, the Momentum Velcro provides stretch where you need it, support where it matters and all-around exceptional breathability for long gym sessions or all-day multi-pitch endeavors. The neutral last provides comfort and performance on a wide range of climbing styles, making this a great one-shoe-quiver as you hone in on your preferred style of climbing.

#### FEATURES

- Neutral, flat last for vertical climbing or all-day comfort
- Two Velcro straps for fit adjustability and quick on-and-off
- Updated Black Label rubber with improved grip and durability
- Soft flex, molded blackLabel rubber midsole for added sensitivity and comfort
- Recycled engineered knit tongue
- Micro suede upper will mold to foot shape, but won't stretch
- Updated heel rubber geometry for consistent tension
- Updated midsole for improved edging ability
- Size Range: EU 35-EU 42
- 485 g
- Country of Origin: China

#### MATERIALS

Upper: 55% Polyester, 45% Rubber; Lining: 60% Polyester, 40% Suede; Midsole: 100% TPU; Outsole 100% Rubber

**\$169.95 RRP**

**Contact your Territory Manager for details**



### Men's Momentum Climbing Shoes

While the Momentum Velcro climbing shoe was built with ultimate comfort in mind; it excels in performance. With an engineered knit tongue and a micro suede upper, the Momentum Velcro provides stretch where you need it, support where it matters and all-around exceptional breathability for long gym sessions or all-day multi-pitch endeavors. The neutral last provides comfort and performance on a wide range of climbing styles, making this a great one-shoe-quiver as you hone in on your preferred style of climbing.

#### FEATURES

- Neutral, flat last for vertical climbing or all-day comfort
- Two Velcro straps for fit adjustability and quick on-and-off
- Updated Black Label rubber with improved grip and durability
- Mid flex, molded blackLabel rubber midsole for added sensitivity and comfort
- Recycled engineered knit tongue
- Micro suede upper will mold to foot shape, but won't stretch
- Updated heel rubber geometry for consistent tension
- Updated midsole for improved edging ability
- Size Range: EU 37.5-EU 47
- 581 g
- Country of Origin: China

#### MATERIALS

Upper: 55% Polyester, 45% Rubber; Lining: 60% Polyester, 40% Suede; Midsole: 100% TPU; Outsole 100% Rubber

**\$169.95 RRP**

# WINTER WARMERS

## TOP PICKS FOR THE COOLER MONTHS

We've pulled together a range of winter-ready gear that's perfect for outdoor adventures and weekend escapes. From cosy camp comforts to cold-weather essentials, this is the gear your customers will be reaching for all season long. Stock up now to keep them warm, happy, and coming back for more.



FirePit+



RRP \$589.99

ORDER NOW



Ski Easy On Merino Performance



RRP \$54.99

ORDER NOW



Nasi Goreng



RRP \$14.99

ORDER NOW



Ether Light XP Pro Insulated Air Sleeping Mat



RRP \$349.99

ORDER NOW



Fleece Seat Warmer



RRP \$69.99

ORDER NOW



Thrive Mug Insulated Stainless Steel



RRP \$48.99

ORDER NOW







# TREKKING POLES

[DOWNLOAD ASSETS](#)

## Trail Cork Trekking Poles

**NEW**

The Black Diamond Trail Cork is built for 4-season versatility and expertly balances comfort, features and durability. The premium 100% natural cork grip is designed for ultimate comfort while the dual FlickLocks® offer complete adjustability to suit the terrain. Comes with snow baskets for shoulder season trail conditions.

### FEATURES

- 7075 aluminum shafts made of 30% pre-consumer recycled aluminum (UL Validated). By total finished weight, these poles contain a minimum of 14% recycled content.
- Soft-touch grip top with 100% natural cork grip and EVA foam grip extension
- Lined Variwidth Comfort strap
- FlickLock adjustability
- 4 season flex tips with both trekking and snow baskets included
- 494 g
- Country of Origin: Taiwan

### MATERIALS

Grip Top] Polycarbonate, TPR[Strap] Nylon, Polyester[Grip] Cork, EVA Foam[Shaft] 100% Aluminum[FlickLock] 100% Nylon[Flex Tip] 100% Nylon[Basket] 100% EVA Plastic[Tip] Carbide, Steel

**\$209.99 RRP**[ORDER NOW](#)





## Trail Back Trekking Poles

A packable, three-section pole that provides stability and support on varying terrain, the Trail Back Trekking Pole is the ideal trekking pole for day hikers and backpackers. The Trail Back is made with dual-density extended grips for switching up hand positions and adjustable webbing straps for added comfort and security. FlickLock technology allows for quick adjustability on the trail and makes it easy to pack poles away when necessary.

### FEATURES

- 7075 aluminum shafts made of 30% pre-consumer recycled aluminum (UL Validated). By total finished weight, these poles contain a minimum of 14% recycled content.
- Comfortable EVA Foam Grip with Extension for multiple grip options on the move
- Patented FlickLock technology is the ultimate system for fast, efficient adjustments on trail
- Adjustable webbing strap
- Replaceable baskets (Comes with extra snow baskets)
- Three-section design is easily stowable
- Size Range: 100-140cm
- 560 g
- Country of Origin: China

### MATERIALS

[Grip Top] 100% TPR[Strap] Nylon, Polyester[Grip] 100% TPR[Shaft] 100% Aluminum[FlickLock] 100% Nylon[Flex Tip] 100% Nylon[Basket] 100% EVA Plastic[Tip] Carbide, Steel

**\$139.99 RRP**

**ORDER NOW**



## Trail Trekking Poles

Balancing comfort, features and reliability, the 3-piece-adjustable Trail features an updated EVA foam grip for added comfort and our partially recycled, Variwidth plush strap for added security and better handling. Dual FlickLocks® offer complete adjustability to suit the terrain. Comes with snow baskets for shoulder season trail conditions.

### FEATURES

- 075 aluminum shafts made of 30% pre-consumer recycled aluminum (UL Validated). By total finished weight, these poles contain a minimum of 14% recycled content.
- Soft-touch grip top with EVA foam grip and grip extension
- Lined Variwidth Comfort strap
- FlickLock adjustability
- 4 season flex tips with both trekking and snow baskets included
- 480 g
- Country of Origin: Taiwan

### MATERIALS

[Grip Top] Polycarbonate, TPR[Strap] Nylon, Polyester[Grip] 100% EVA Foam[Shaft] 100% Aluminum[FlickLock] 100% Nylon[Flex Tip] 100% Nylon[Basket] 100% EVA Plastic[Tip] Carbide, Steel

**\$199.99 RRP**

**ORDER NOW**



## Distance Z Poles

Designed for everyday use by trail runners and hikers, the Distance Z is a dependable aluminum trekking pole featuring our quick and easy collapsing ZPole technology. Our lightweight and supportive Distance strap is breathable and moisture wicking, providing reliable three-season support for a wide array of mountain adventures.

### FEATURES

- 100% carbon fiber shafts
- Fixed length construction
- Lightweight EVA foam grip and grip extension with breathable, moisture wicking strap made from recycled materials
- Mid-shaft ring for horizontal carrying balance and grip
- Interchangeable tech tip compatible with rubber tech tips included
- Removable low-profile baskets for versatility
- Available in 100, 110, 120, and 130cm lengths
- Size Range: 100cm-130cm
- 81 g, 85 g, 89 g, 96 g
- Country of Origin: Taiwan

### MATERIALS

[Strap] Polyester, Nylon[Grip] EVA Lite Foam[Shaft] Carbon[Ring] Nylon[Flex Tip]  
Nylon[Basket] EVA Plastic[Tip] Carbide, Steel

**\$309.99 RRP**

**ORDER NOW**



## Distance FLZ Poles

Combining the amazing packability of a Z-Pole with Flicklock® adjustability, the Distance FLZ is an excellent choice for trail runs, steep scrambles and long hikes. The Distance FLZ utilizes our lightweight and supportive Distance strap that's breathable and moisture wicking, making the Distance FLZ a durable, lightweight trekking machine ready for adventure.

### FEATURES

- 7075 aluminum shafts made of 30% pre-consumer recycled aluminum (UL Validated). By total finished weight, these poles contain a minimum of 14% recycled content.
- Improved joint support and stiffness
- Lightweight EVA foam grip and grip extension with breathable, moisture wicking strap made from recycled materials
- Three-section foldable shaft with speed cone deployment and FlickLock® adjustability
- Interchangeable rubber Tech Tips and carbide Tech Tips
- Removable low-profile baskets for versatility
- Z-Pole Snow Basket compatible
- Size Range: 95-110cm, 110-125cm, and 125-140cm
- 417 g, 447 g, 477 g
- Country of Origin: Taiwan

### MATERIALS

[Strap] Polyester, Nylon[Grip] EVA Lite Foam[Shaft] Aluminum[FlickLock] Aluminum, Stainless Steel[Z-Mechanism] Polyurethane, Aluminum, Kevlar, Nylon[Flex Tip] Nylon[Basket] EVA Plastic[Tip] Carbide, Steel

**\$349.99 RRP**

**ORDER NOW**









# MEET OFFGRID'S NEW PERFORMANCE SERIES BREKKIE BOWLS



23.6g	570	26.2g	39.0g	GLUTEN FREE
PROTEIN	CAL	CARBS	FAT	DAIRY FREE
				NUT FREE

**\$12.99 RRP**  
**ORDER NOW**

## BREKKIE BOWL APPLE & COCONUT

Sunflower seeds, organic pea protein, BCAA powder, pepitas, walnuts, cashews, cacao, spirulina, maple syrup, cinnamon, monk fruit extract, coconut, chia seeds, freeze-dried apple and coconut milk powder.



28.4g	610	24.3g	42.4g	GLUTEN FREE
PROTEIN	CAL	CARBS	FAT	DAIRY FREE
				NUT FREE

**\$12.99 RRP**  
**ORDER NOW**

## BREKKIE BOWL CHERRY & ACAI

Brown rice crisps, organic peas protein, sunflower seeds, pepitas, BCAA powder, coconut milk powder, flaxseed, monk fruit extract, cacao, coconut, chia seeds, freeze-dried cherries, blueberry powder and acai powder.



27.3g	610	30.3g	39.6g	GLUTEN FREE
PROTEIN	CAL	CARBS	FAT	DAIRY FREE
				NUT FREE

**\$12.99 RRP**  
**ORDER NOW**

## BREKKIE BOWL MANGO & PASSION FRUIT

Brown rice crisps, organic pea protein, BCAA powder, sunflower seeds, coconut milk powder, flaxseed, monk fruit extract, cacao powder, coconut, chia seeds, freeze-dried passionfruit and freeze-dried mango.



**DOWNLOAD ASSETS**



"All new!! Offgrid plant-based PERFORMANCE SERIES brekkie bowls are formulated for the early bird on the go. Packed with goodness, added BCAA's to reduce muscle fatigue, organic pea proteins to keep you at your best and each recipe is made with natural fruits, assorted seeds and superfoods. Supercharge your day - **Just add water.**"

*James Viles, Founder of Offgrid.*



# Genesis Basecamp

## Take 5-star dining anywhere

The Ultimate all-in one stove,  
perfect for back country cooking.



**JETBOIL®**



### Genesis Basecamp

The Genesis Basecamp System's dual burner stove, 5L pot and 10-inch non-stick fry pan, provide a game changing cooking experience you didn't know you needed.

### Compact Carrying

Just tuck the stove into the 5L pot, pack in the bag with your skillet, and go! Watch how easy it is to pack up your Genesis.

**\$699.99 RRP**

**Order Now**

**Download Assets**







# CamelBak Custom Drinkware and Corporate Gifting

Looking for premium drinkware with a personal touch? Whether it's for corporate gifting, events, or a special occasion, our custom printing and engraving options are available on a wide range of CamelBak bottles and drinkware. Perfect for larger orders—starting at just 36 units—these customised gifts are made to last and made to stand out.

## HOW IT WORKS

1

Explore our range of drinkware available for customisation here

2

We offer both screen printing and laser engraving, review our price guide here

3

Complete the form on our website

4

Our team will review your application and be in touch with a quote

OUR RANGE

PRICE GUIDE

FORM









# OUT & ABOUT

We've been busy getting brands in front of customers—and here's the proof. Take a look at some of the marketing we've rolled out recently. Inspired?

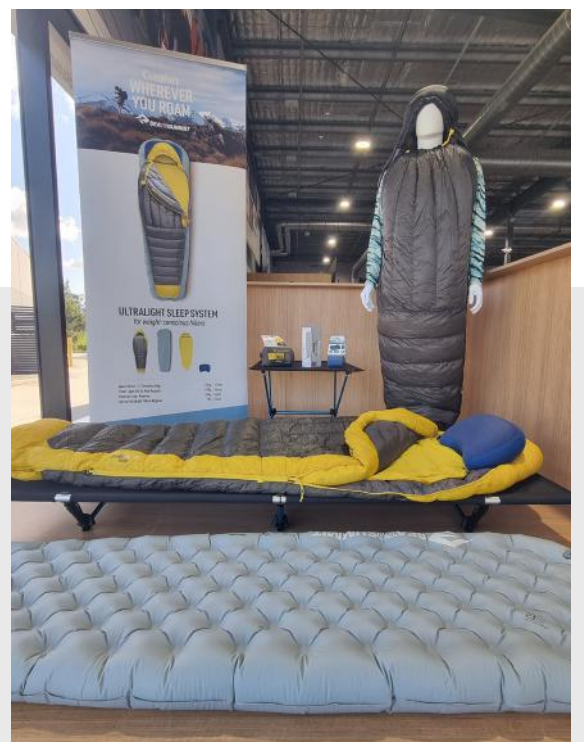
Connect with your Territory Manager to make it happen in your space.



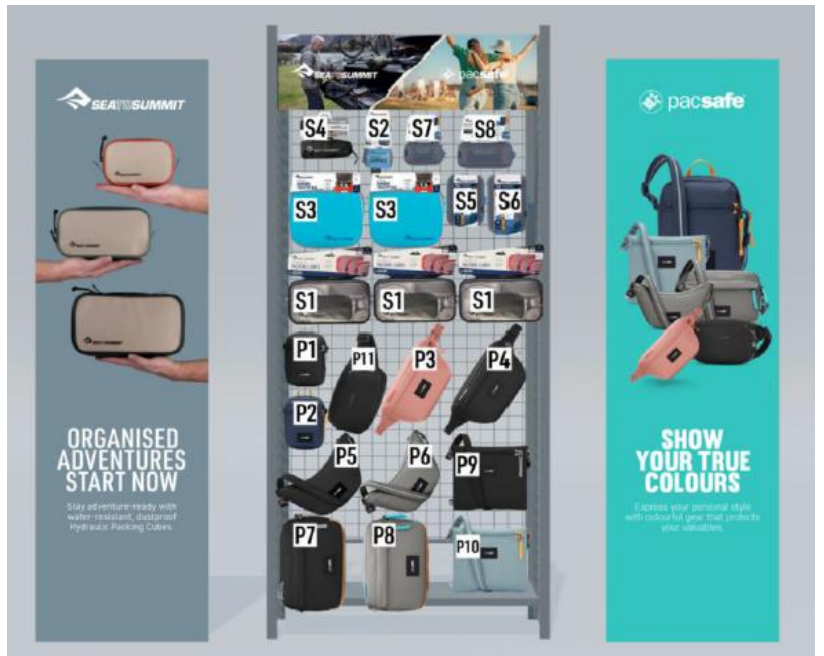
Teardrop Banners



Window Displays







End Caps featuring collab with Sea to Summit and Pacsafe & Jetboil and Offgrid



New Sleeping Mat R-Values Floor Mats



Sea to Summit at Explorerfest, Australia's first camping festival, hosted by We Are Explorers



CamelBak at Seven Gravel Race



# CONNECT





**Scott Greasley**

General Manager APAC & CCO

m: 0473 152 598

e: [sgreasley@seatosummit.com.au](mailto:sgreasley@seatosummit.com.au)

**SALES TEAM****Dave Gower**

Sales Director, AU

m: 0423 545 738

e: [dgower@seatosummit.com.au](mailto:dgower@seatosummit.com.au)

**Stuart Hawthorne**

National Sales Manager – GMI

m: 0421 749 765

e: [shawthorne@seatosummit.com.au](mailto:shawthorne@seatosummit.com.au)

**Rebecca Swierc**

National Key Account Manager

m: 0435 859 332

e: [rswierc@seatosummit.com.au](mailto:rswierc@seatosummit.com.au)

**Victoria Price**

Strategic Key Account Manager

m: 0412 760 626

e: [vprice@seatosummit.com.au](mailto:vprice@seatosummit.com.au)

**Stuart Wallace**

Key Account Manager

m: 0435 918 239

e: [swallace@seatosummit.com.au](mailto:swallace@seatosummit.com.au)

**Brian Lo**

Territory Manager NSW

m: 0424 670 536

e: [brian@seatosummit.com.au](mailto:brian@seatosummit.com.au)

**Joshua Boyd**

Territory Manager QLD/NT

m: 0422 669 667

e: [jboyd@seatosummit.com.au](mailto:jboyd@seatosummit.com.au)

**Brett Russell**

Territory Manager VIC/TAS/SA

m: 04438 112 456

e: [brussell@seatosummit.com.au](mailto:brussell@seatosummit.com.au)

**Jack Walters**

Customer Service / Territory Manager WA

m: 0432 702 439

e: [jwalters@seatosummit.com.au](mailto:jwalters@seatosummit.com.au)

**Sam Anderson**

Visual Merchandising Specialist

m: 0402 851 713

e: [sanderson@seatosummit.com.au](mailto:sanderson@seatosummit.com.au)

**IMAGE LIBRARY ON BRANDFOLDER**

Gain access to our downloadable product and lifestyle image library.

Contact your Territory Manager

**BRAND TEAM & MARKETING****Seth Fortune**

Brand Director, APAC

m: 0401 610 162

e: [seth@seatosummit.com.au](mailto:seth@seatosummit.com.au)

**Wayne Thomas**

Brand Manager

m: 0417 519 356

e: [wayne@seatosummit.com.au](mailto:wayne@seatosummit.com.au)

**Mikaela Kongshaug**

Brand Manager

m: 0404 622 943

e: [mkongshaug@seatosummit.com.au](mailto:mkongshaug@seatosummit.com.au)

**Ellen Flower**

Assistant Brand Manager

m: 0434 671 370

e: [ellen@seatosummit.com.au](mailto:ellen@seatosummit.com.au)

**Emily Cockle**

Marketing Manager AU

m: 08 9221 6617

e: [ecockle@seatosummit.com.au](mailto:ecockle@seatosummit.com.au)

**Amanda Toquetto**

Marketing Specialist AU

m: 08 9221 6617

e: [atoquetto@seatosummit.com.au](mailto:atoquetto@seatosummit.com.au)

**CUSTOMER SERVICE & WARRANTIES****Customer Service**

m: 08 9221 6617

e: [enquiries@seatosummit.com.au](mailto:enquiries@seatosummit.com.au)

**Accounts**

m: 08 9221 6617

e: [accountsreceivable@seatosummit.com.au](mailto:accountsreceivable@seatosummit.com.au)

**Warranties**

If you identify that there may be an issue with a product, please use the QR code and complete the warranty claim form:



This will create a warranty claim which Sea to Summit will review and assess as soon as possible.



