



YOUR GUIDE TO REFERRING

Mann Eye Institute
SEE LIFE BETTER



TABLE OF CONTENTS

CONTACT INFORMATION

Referral Department Contact Info	6
--	---

REFERRAL INFORMATION

Patient Direct Referral Form	10
Location Map for Referrals	11
Referral Portal	12

INSURANCE INFORMATION

Insurance Guide	14
Surgeon Consultation Fees & Surgical Procedures.....	15

SURGEONS & SERVICES

Provider Locations and Services.....	18
--------------------------------------	----

LASIK RESOURCES

LASIK & ICL Pricing Guide	21
Patient Education - LASIK	22
Patient Education - ICL	23

CATARACT RESOURCES

Cataract Pricing Guide - with Insurance	25
Cataract Pricing Guide - Self-Pay without Insurance	26
Patient Education - Cataract	27

RLE RESOURCES

RLE Pricing Guide	30
Patient Education - RLE.....	31

KERATOCONUS RESOURCES

Keratoconus Pricing Guide	34
Patient Education - Keratoconus	35

RETINA RESOURCES

Valeda Light Therapy Fee Sheet	37
Patient Education - Valeda Light Therapy.....	38

OCULOPLASTIC RESOURCES

Rohan Verma, MD Bio.....	41
--------------------------	----



CONTACT INFORMATION

Mann Eye Institute

A decorative graphic on the right side of the page consists of a series of thin, light blue curved lines that fan out from the bottom left towards the top right. Overlaid on these lines are two thick diagonal stripes: a red one on top and a dark blue one below it, both running from the bottom left towards the top right.



Contact the Referral Department
Scheduling / Referrals



Grace Lau
Office/Text: 713-580-2506
Fax: 713-580-2507
refer@manneye.com



Mariana Rodriguez
Office/Text: 713-580-2506
Fax: 713-580-2507
refer@manneye.com



Chriss Ballena
Office/Text: 713-580-2506
Fax: 713-580-2507
refer@manneye.com



**Contact the CoManagement Team
Physician Liaison**



**Tina Redmon, COA,ROUB,OSC
713-824-8132 voice/text
tredmon@manneye.com**

**Sarah Rackel
713-206-0312 voice/text
srackel@manneye.com**





REFERRAL RESOURCES

Mann Eye Institute

A decorative graphic on the right side of the page consists of a series of thin, light blue curved lines that fan out from the bottom left towards the top right. Overlaid on these lines are two thick diagonal stripes: a red one on top and a dark blue one below it, both running from the bottom left towards the top right.

Direct Refer

PATIENT INFO

Name: _____ DOB: ____/____/____

Phone: _____ Email: _____

Insurance Provider: _____

ID No: _____ Group No: _____

REASON FOR REFERRAL

TO BE SEEN BY:

Paul Mann, MD <i>Cataract & Refractive Surgeon</i> <input type="checkbox"/> Fannin Street <input type="checkbox"/> Katy	Brian Wright, MD <i>Cataract & Refractive Surgeon</i> <input type="checkbox"/> Katy <input type="checkbox"/> Sugarland	Jennifer Melton, MD <i>Cataract & Refractive Surgeon</i> <input type="checkbox"/> Humble <input type="checkbox"/> The Woodlands	David Szyrkarski, MD <i>Cataract & Refractive Surgeon</i> <input type="checkbox"/> Humble
Alex Hacopian, MD <i>Cataract & Refractive Surgeon</i> <input type="checkbox"/> Fannin Street <input type="checkbox"/> Humble <input type="checkbox"/> Katy	Amir Mohsenin, MD <i>Retina Specialist</i> <input type="checkbox"/> Fannin Street <input type="checkbox"/> Katy	Andreas Gonzalez, MD <i>Retina Surgeon</i> <input type="checkbox"/> Fannin Street <input type="checkbox"/> Humble <input type="checkbox"/> Sugar Land <input type="checkbox"/> The Woodlands	Rohan Verma, MD <i>Oculoplastic Surgeon</i> <input type="checkbox"/> Fannin Street <input type="checkbox"/> Humble <input type="checkbox"/> Katy <input type="checkbox"/> Sugar Land <input type="checkbox"/> The Woodlands

REFERRING PHYSICIAN

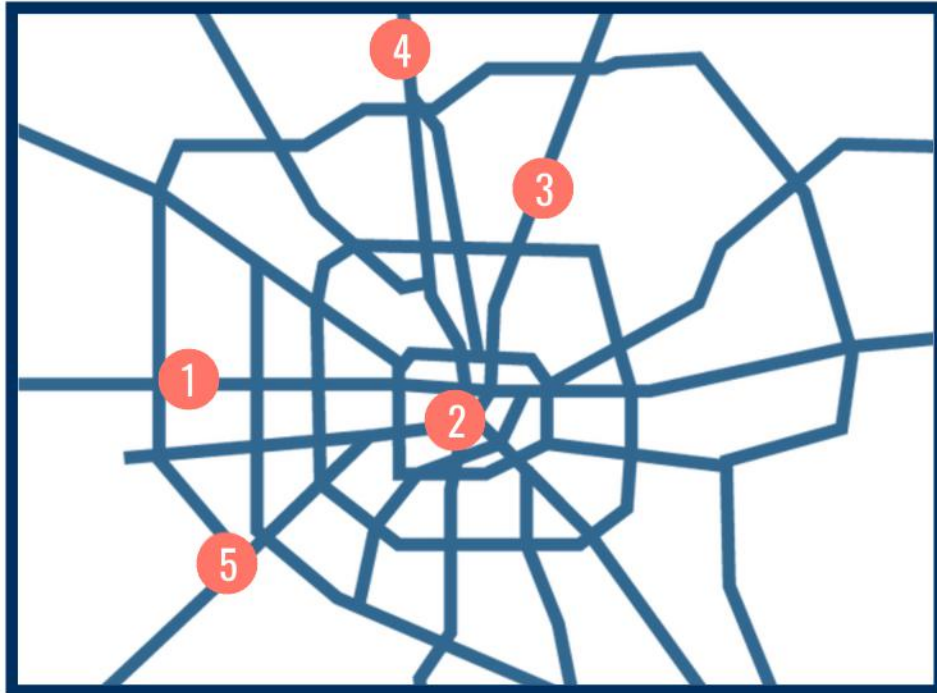
Name/Location: _____

Phone: ____/____/____

For questions or scheduling, contact our Mann Eye Referral Department at 713.580.2506 or refer@manneye.com.

Fax this form and most recent chart notes to 713.580.2507.

Please provide a copy of this referral form to your patient to bring with them to their visit.



1 Katy
750 Westgreen Blvd.
Katy, TX 77450

2 Fannin
5115 Fannin St.
Houston, TX 77004

3 Humble
18850 S. Memorial Drive
Humble, TX 77338

4 The Woodlands
17450 St. Luke's Way
Suite 100
The Woodlands, TX 77384

5 Sugar Land
6424 E. Riverpark Dr
Sugar Land, TX 77479

Referred Patients
713-580-2506 (direct voice line)
refer@manneye.com

Your appointment will be scheduled with _____
at _____ location.

***You should expect a call within 24 hrs from our scheduling team.
Please feel free to contact us at anytime***



Referral Portal

Referring your patients to our practice is now simple and efficient.

This tool offers your practice more visibility throughout the entire referral process.

Ease of Scheduling

No more phone tag. Appointments are scheduled online in real-time.

eReferrals

Electronically schedule referrals when convenient for your practice. Referral Letter and a summary of the visit is available to print or download.

Access to Live Reports

Live patient appointment status reporting available 24/7. Chart note and messages are securely exchanged between our practices.

Happier Patients

Easy to read forms with appointment details printed for the patient. Improved coordination of care is valued by patients.

Already an existing referral portal user?

[CLICK HERE](#)

Interested in becoming a referral portal user?

[CLICK HERE](#)

INSURANCE INFORMATION

Mann Eye Institute



We are providers for many insurance plans. For ease in cross checking, below is a list of plans we are **NOT** providers for.

This is a general reference as the list can change.

If you have any questions, feel free to contact us at 713-580-2506.

AETNA Bronze Elect Choice
AMBETTER
***ONLY secondary to Medicare
AMERIGROUP (Star, Star Plus, Chips)
AMERIVANTAGE-
APHP
AVESIS ME 2 ONLY
BCBS (T2G) ALPA PREFIX
BCBS Edge Blue-Not Providers
BLOCK VISION
BLUE CHOICE
BLUE SOLUTIONS
BRAVO HEALTH
CHARTER & CHARTER BALANCED
CHC W # 5 or 7 (MEDICAID)
CIGNA TOTAL CARE
COAST TO COAST VISION
COMPASS PLUS & BALANCED
ELDER HEALTH
ELDER HEALTH-BRAVO CLASSIC II
EVERCARE CHOICE-MEDICARE
EVERCARE STAR PLUS- MEDICAID
FRIDAY HEALTH
HAM (HEALTH ALLIANCE FOR MUSICIANS AUSTIN)
HCA
HEALTH LINK
HEALTHSPRINGS RENAISSANCE
KELSEY SEYBOLD- OF ANY KIND
MAP (MEDICAID)
SOLUTIONS/PRECISON
HOUSTON HMO X
MEDICAID (ONLY IS SECONDARY)
***NO OUT OF STATE MEDICAID
MEMORIAL HERMANN- EDGE PLAN
MOLINA HEALTHCARE
MY BLUE HEALTH
OPTICARE DISOUNT PLAN
OPTICARE MEDICAL SURGICAL
OSCAR HEALTH
PCCM-MEDICARE
SCOTT & WHITE-BAKER/BEAVERS ONLY
SELECT CARE
SELECT CARE OF TEXAS
SENDERO HEALTH INSURANCE
SETON HEALTHCARE
STAR HRG
SUPERIOR HEALTH PLAN
TEXAN PLUS
TEXAS HEALTH SPRINGS
TML-TEXAS MUNICIPAL LEAGUE
TRANSAMERICA
UHC-TEXAS STAR
UFCW NORTHERN CALIF.HEALTH & LIFE
UHC COMMUNITY PLAN
UNIVERSAL HEALTH-MEDICARE
UNIVERSAL HEALTH CARE-MEDICARE
US FAMILY HEALTH PLAN (USFHP)
UTMB-CHIPS
NAVIGATE PLUS & BALANCED
TML VISION
WELLCARE
WORKERS COMP

ADDITIONAL SURGEON CONSULTATION FEES

Diagnosis	Insurance	Patient Self-Pay (no insurance)
Retina	Insurance Out-of-Pocket varies w/ each plan	Starts at \$300
Glaucoma	Insurance Out-of-Pocket varies w/ each plan	Starts at \$350
Oculoplastics	Medically Necessary Consults: Insurance Out-of-Pocket varies w/ each plan	Cosmetic Consults: Starts at \$100

SURGICAL PROCEDURES - DIRECT REFER

Procedure	Insurance	Patient Self-Pay (no insurance)
Pterygium w/ Graft	Insurance Out-of-Pocket varies w/ each plan	\$2100/eye
YAG	Insurance Out-of-Pocket varies w/ each plan	\$900/eye
Corneal Amniotic Membrane Graft	Insurance Out-of-Pocket varies w/ each plan	\$1500/eye
SLT	Insurance Out-of-Pocket varies w/ each plan	\$625/eye



SURGEONS & SERVICES

Mann Eye Institute





PAUL MANN, M.D.

Ophthalmology
Cataract and Refractive Surgeon
Chief Medical Officer of Mann Eye Clinics

LOCATIONS

Fannin Street Museum District
Katy

SERVICES

- All-Laser LASIK
- Cataract Surgery
- Corneal Crosslinking
- Ocular Surface Disease
- Glaucoma
- Pterygium Excision
- Chalazion Excision
- Refractive Lens Exchange

PROFESSIONAL ASSOCIATIONS

American Board of Ophthalmology, Board Certified Diplomate
American Academy of Ophthalmology, Fellow
American and European College of Ophthalmic Surgeons, Founding Member
American Society of Cataract and Refractive Surgeons

EDUCATION & TRAINING

Medical School: University of Texas
Residency: John A. Moran Eye Center of the University of Utah
Fellowship: Pepose Vision Institute in Missouri



BRIAN D. WRIGHT, M.D.

Ophthalmology
Cataract and Refractive Surgeon
Medical Officer of Mann Eye ASCs

LOCATIONS

Katy
Sugar Land

SERVICES

- All-Laser LASIK
- Cataract Surgery
- Glaucoma
- ICL
- Ocular Surface Disease
- Refractive Lens Exchange

PROFESSIONAL ASSOCIATIONS

American Academy of Ophthalmology, Fellow
American Society of Cataract and Refractive Surgeons
Houston Ophthalmology Society

EDUCATION & TRAINING

Medical School: The University of Texas Southwestern Medical School
Residency: University of Washington



JENNIFER MELTON, M.D.

Ophthalmology
Cataract and Refractive Surgeon

LOCATIONS

Humble
The Woodlands

SERVICES

- All-Laser LASIK
- Cataract Surgery
- Refractive Lens Exchange
- Glaucoma
- Pterygium Excision

PROFESSIONAL ASSOCIATIONS

American Academy of Ophthalmology
Association for Research in Vision and Ophthalmology
Texas Ophthalmology Society
American College of Physicians

EDUCATION & TRAINING

Medical School: Louisiana State University
Residency: Louisiana State University
Fellowship: Shiley Eye Center at the University of California



AMIR MOHSEIN, M.D., PHD

Retina and Vitreous Diseases and Surgery

LOCATIONS

Fannin Street Museum District
Katy

SERVICES

- Retina Vitreous Diseases
- Macular Degeneration
- Diabetic Retinopathy
- Retinal Detachments
- Macular Holes
- Retinal Vascular Disease

PROFESSIONAL ASSOCIATIONS

American Academy of Ophthalmology
Association for Research in Vision and Ophthalmology

EDUCATION & TRAINING

Medical School: UTHealth's McGovern Medical School
Residency: Yale University School of Medicine
Fellowship: Bascom Palmer Eye Institute



ALEX HACOPIAN, M.D.

Ophthalmology
Cataract and Refractive Surgeon

LOCATIONS

Fannin Street Museum District
Humble
Katy

SERVICES

- All-Laser LASIK
- Cataract Surgery
- Active Life Lens Elective Surgery
- Corneal Crosslinking
- Glaucoma
- Pterygium Excision

PROFESSIONAL ASSOCIATIONS

American Board of Ophthalmology
American Academy of Ophthalmology, Fellow

EDUCATION & TRAINING

Medical School: University of Texas at Houston
Residency: George Washington University



ROHAN VERMA, M.D.

Oculoplastics

LOCATIONS

Fannin Street Museum District
Humble
Katy
Sugar Land
The Woodlands

SERVICES

- Cosmetic & Reconstructive Surgery of the Eyes
- Upper and Lower Eyelid Lifts
- Forehead/Brow Lift
- Cheek Lift
- Face lift
- Neck lift
- Dermal fillers & Botox
- Mohs Reconstructive Surgery
- CO2 Laser Resurfacing
- Thyroid Disease

PROFESSIONAL ASSOCIATIONS

American Academy of Ophthalmology
American Society of Ophthalmic and Reconstructive Surgery (ASOPRS)

EDUCATION & TRAINING

Medical School: University of California San Diego School of Medicine
Residency: UC San Diego Shiley Eye Institute
Fellowship: Oregon Health & Science University Casey Eye Institute



ANDREAS GONZALEZ, MD

Retina and Vitreous Diseases and Surgery

LOCATIONS

Fannin Street Museum District
Humble
Sugar Land
The Woodlands

SERVICES

- Retinal Surgery
- Laser Surgery
- Macular Degeneration
- Anti-VEGF Treatment
- Diabetic Retinopathy
- Retinal Vein Occlusion
- Cystoid Macular Edema
- Flashes and Floaters
- Detached and Torn Retina
- Complex Retinal Surgery
- Scleral Buckles
- Macular Hole
- Macular Pucker
- Visually Significant Vitreous Floaters
- Diabetic Tractional Retinal Detachments
- Uveitis

EDUCATION & TRAINING

Medical School: University of Florida College of Medicine
Residency: University of Florida College of Medicine
Fellowship: University of Southern California's Roski Eye Institute

PROFESSIONAL ASSOCIATIONS

American Academy of Ophthalmology
American Society of Retina Specialists
American Medical Association



DAVID SZYRKARSKI, MD

Ophthalmology
Cataract and Refractive Surgeon

LOCATIONS

Humble

SERVICES

- All-Laser LASIK
- Cataract Surgery
- Active Life Lens Elective Surgery
- ICL (Implantable Contact Lens)

PROFESSIONAL ASSOCIATIONS

Texas Medical Association
Texas Ophthalmology Association
Association of Research in Vision and Ophthalmology
American Academy of Ophthalmology
American Medical Association.

EDUCATION & TRAINING

Medical School: Texas A&M University College of Medicine
Residency: University of Texas Medical Branch
Fellowship: Parkhurst NuVision, Refractive Surgery Fellowship

LASIK & ICL RESOURCES

Mann Eye Institute

A decorative graphic on the left side of the page consists of several overlapping curved bands in shades of blue and red. From these bands, a series of thin, light blue lines extend across the page, curving downwards and to the right, creating a sense of motion and depth.

LASIK and ICL

LASIK & ICL Consultation Fee

No Charge

Procedure

Package Details

Advanced LASIK

Contoura and/or Iris Registration
Wavefront Guided Treatment

\$2100/eye
*average price

ICL

Preoperative testing, EVO lens,
ICL procedure & all post operative
care with surgeon

\$4600/eye

GO BEYOND 20/20 WITH NEXT LEVEL LASIK

HOW IT WORKS

NextLevel LASIK uses advanced laser technology to create a digital 3D twin of your eye to precisely reshape your cornea, optimizing how light focuses on your retina. The result? Sharper, clearer vision without the need for glasses or contacts.

When it comes to long-term eye health, LASIK has been proven safer than wearing daily contact lenses.

At Mann Eye Institute, we use the most advanced LASIK technology

NextLevel Technology for NextLevel Vision

We're proud to offer NextLevel LASIK with the advanced Wavelight® Plus system, a breakthrough in precision, personalization, and performance. This next-generation system provides a more complete, high-resolution view of your eye, allowing for a treatment plan tailored specifically to you. With Wavelight Plus, we're able to deliver optimized outcomes with unmatched accuracy, raising the bar for what LASIK can achieve.

The Three Key Innovations

MEASURE. One smart system now does it all. Wavelight® Plus combines wavefront analysis, corneal topography, and biometry into one seamless scan, giving your surgeon a complete, ultra-precise map of your vision.

PERSONALIZE. Older LASIK was one-size-fits-most. Wavelight Plus uses advanced ray tracing to personalize treatment to your unique eye, delivering accuracy beyond traditional methods.

DELIVER. NextLevel LASIK isn't just about seeing 20/20, it's about seeing even better. Clinical results show 100% of patients reached 20/20, and over 50% achieved an exceptional 20/12.

YES, YOU CAN AFFORD LASIK!

We believe that quality eye care should be available to everyone. Our goal is to provide you a premium LASIK procedure at an affordable price. 0% financing options and low monthly payments are available.

**ALL-LASER LASIK IS ONE OF
THE MOST COMMONLY
PERFORMED ELECTIVE
PROCEDURES IN THE WORLD**

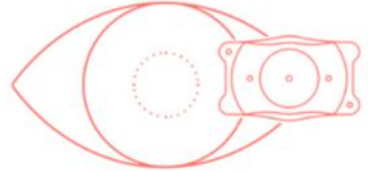
Ready to See Life Better? We're ready to help. Schedule your free LASIK screening today!
REFER@MANNEYE.COM | 713.580.2506

EVO ICL (Implantable Collamer Lens)



WHAT IS EVO ICL?

EVO ICL is an FDA-approved, advance vision correction solution that works in harmony with your eyes' natural structure, delivering clear vision without permanently altering your cornea.



WHO IS A CANDIDATE?

You may be a great fit for EVO ICL if you:

- ▶ Are between 18 - 55 years old
- ▶ Have moderate to high nearsightedness, with or without astigmatism (-3D to -20D)
- ▶ Have been told you are not a candidate for LASIK
- ▶ Have stable vision for at least 1 year, with no significant changes in prescription

HOW DOES EVO ICL WORK?

With built-in UV protection, most patients return to daily life within 1-2 days. Most patients see 20/20 as soon as 1 hour after surgery!

Easy 20-30 Minute Surgical Procedure



Pre-Op Eye Exam



Eye Drops Administered



Small Opening



Lens Insertion and Positioning



Post Op & Check-up

BENEFITS OF EVO ICL

- ▶ Provides clear, sharp vision
- ▶ Quick recovery time
- ▶ Excellent night vision
- ▶ Removable by your doctor
- ▶ Not visible once in place
- ▶ Does not cause dry eye

CLEAR VISION WITHIN REACH

We believe that quality eye care should be available to everyone. Our goal is to provide you a premium vision correction options at an affordable price. 0% financing options and low monthly payments are also available! After your procedure you will no longer have the expense of eyeglass frames, prescription lenses, nor contacts lenses and solutions.

Ready to See Life Better? We're ready to help. Schedule your free screening today!

REFER@MANNEYE.COM | 713.580.2506

CATARACT RESOURCES

Mann Eye Institute



CATARACT - PATIENTS USING INSURANCE

Pre-Operative Cataract Fees

Cataract Consultation	Consultation w/ Surgeon	Insurance out-of-pocket. Varies w/ each plan.
Vision Recovery Kit	Complete Post Operative Care Kit	\$180

Patient Package Options/Using Insurance

Procedure

Package Details

Extended Range Package (ERP)	Pt Elects Upgrade ERP Package. FEMTO Laser w/ any MultiFocal or MultiFocal TORIC Lens.	\$4595/eye + ins. out-of-pocket
Astigmatism Management Package (AMP)	Pt Elects Upgrade AMP Package. FEMTO Laser w/ STD MonoFocal or TORIC Lens. Including MonoVision.	\$2795/eye + ins. out-of-pocket
Standard Lens/ Manual Surgery	Pt Elects NO Upgrade Package. Standard Lens w/ Manual Surgery.	Ins. out-of-pocket. Varies with each plan.

Anesthesia Services

Anesthesia Services	Separate fee paid direct to Anesthesia Provider on day of procedure	Ins. out-of-pocket. Varies with each plan.
---------------------	---	---

CATARACT - PATIENTS SELF PAY/NO INSURANCE

Pre-Operative Cataract Fees

Cataract Consultation	Consultation w/ Surgeon	Starts at \$250
Vision Recovery Kit	Complete Post Operative Care Kit	\$180

Patient Package Options/Self Pay

Procedure

Package Details

Extended Range Package (ERP)	Pt Elects Upgrade ERP Package. FEMTO Laser w/ any MultiFocal or MultiFocal TORIC Lens.	\$5995/eye
Astigmatism Management Package (AMP)	Pt Elects Upgrade AMP Package. FEMTO Laser w/ STD MonoFocal or TORIC Lens. Including MonoVision.	\$4195/eye
Standard Lens/ Manual Surgery	Pt Elects NO Upgrade Package. Standard Lens w/ Manual Surgery.	\$2200/eye

Anesthesia Services

Anesthesia Services	Separate fee paid direct to Anesthesia Provider on day of procedure	\$300/eye
---------------------	---	-----------

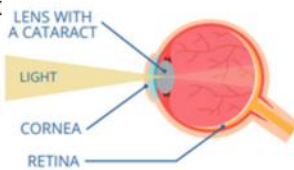
LASER CATARACT SURGERY

See Life Better with cataract surgery designed with you in mind



WHAT IS A CATARACT?

A common misconception is that a cataract is a 'growth' on the eye. A cataract is not a growth, it is a clouding and hardening of the eye's natural lens that blocks light from being able to focus on the retina causing decreased vision. Most commonly, the decrease in vision is gradual over time.



WHAT ARE THE SYMPTOMS?

- ▶ Cloudy or blurry vision
- ▶ Colors seem faded
- ▶ Glare or halos appear around lights and in bright sun
- ▶ Double vision
- ▶ Frequent prescription changes

HOW ARE CATARACTS TREATED?

Cataracts cannot be treated with medication, diet, eye drops, or a new glasses prescription, and they will not heal on their own. Surgery is the only option.

The good news is that cataract surgery is one of the MOST COMMON and MOST SUCCESSFUL medical procedures in the U.S. today, and the surgeons at Mann Eye Institute are among the most experienced cataract surgeons in the country.

LASER CATARACT SURGERY

ADDED SAFETY, PRECISION AND CONSISTENCY OF RESULTS

Laser cataract surgery improves the precision of many key surgical steps and customizes the procedure to provide the opportunity for more desirable visual outcomes and make cataract surgery simpler, with fewer complications and faster recovery. It is also capable of treating astigmatism during the procedure.

ACTIVE LIFE LENSES

THE OPPORTUNITY TO GREATLY DECREASE OR ELIMINATE DEPENDENCE ON GLASSES

During cataract surgery, your natural lens, which is now a cataract, is removed and replaced with an artificial lens. At Mann Eye Institute, we offer a variety of Active Life Lenses that can eliminate your glasses prescription, so you no longer are dependent on bifocals, readers, or contact lenses!

With our Active Life Lenses, we are able to customize each procedure to your individual vision needs and lifestyle. So, whether you love to play tennis, swim, hike or even enjoy a great book, we have a procedure tailor-made to give you the opportunity to **See Life Better**.

Active Life Lens



6 mm



17.9 mm

ACTIVE LIFE LENS

NEAR VISION



INTERMEDIATE VISION



DISTANCE VISION



ASTIGMATISM CORRECTING



Ready to See Life Better? We're ready to help. Schedule your cataract evaluation today.

REFER@MANNEYE.COM | 713.580.2506



REFRACTIVE LENS EXCHANGE (RLE) RESOURCES

Mann Eye Institute

A decorative graphic on the right side of the page consists of a series of thin, light blue curved lines that sweep upwards and to the right. Overlaid on these lines are two thick diagonal stripes: a red one on top and a dark blue one below it, both extending from the bottom left towards the top right.

Refractive Lens Exchange (RLE)

Refractive Lens Exchange
Consultation Fee

No Charge

Procedure

Description

Refractive Lens Exchange
(RLE) Self-Pay

FEMTO surgery with any of the following:
MultiFocal Lens, MultiFocalTORIC Lens
TORIC Lens, Standard IOL (mono vision)

\$5995/eye

Anesthesia Services

Separate fee paid direct to Anesthesia
Provider on day of procedure

\$300/eye

REFRACTIVE LENS EXCHANGE



WHAT IS PRESBYOPIA?

Presbyopia (Over 40 Vision) is an age-related vision condition that reduces the ability of the eye to focus on near objects. It occurs when the crystalline lens inside your eye slowly loses its flexibility, making it difficult to focus up close. When you are young, the lens is soft and flexible, easily changing shape. This lets you focus on objects both close-up and far away. It cannot change shape as easily and you begin to notice it is more difficult to read a menu or a book, read texts/emails on your cell phone, or do other close-up tasks.

WHAT ARE THE SYMPTOMS?

- ▶ Blurry near vision beginning around 40
- ▶ Difficulty reading in low light
- ▶ Becoming increasingly dependent on stronger reading prescription
- ▶ Eye strain and visual fatigue

REFRACTIVE LENS EXCHANGE

A Refractive Lens Exchange (RLE) is a great, effective, and fully customizable vision correction option. Depending on the Active Life Lens chosen, a Refractive Lens Exchange could decrease your daily dependence on glasses, contacts, and reading aids. RLE also removes the possibility of cataracts in the future because the eye's natural lens is removed and replaced with an artificial lens to improve vision. This procedure is done in a comfortable, outpatient setting.

ACTIVE LIFE LENSES

Patients have more choices than ever for the type of lens replacement that will best suit their needs and their lifestyles. Modern lenses allow the vast majority of patients the opportunity to see life better at a range of distances, including good eyesight at close range without the need for reading glasses.



LASER ASSISTED SURGERY

Custom laser surgery represents one of the great surgical advancements of our time. Incorporating a sophisticated laser system into surgery takes it to a whole new level, offering additional:

- ▶ **Safety**
Laser surgery provides the opportunity for a simpler procedure with fewer complications and faster recovery.
- ▶ **Precision**
Laser surgery improves the precision of many key surgical steps and customizes the procedure.
- ▶ **Consistency of Results**
Laser surgery removes the possibility of inconsistency in the procedure, providing the opportunity for more desirable visual outcomes.

And one final reason to choose laser surgery? Because of the incredible mapping capability that assesses the exact topography of your unique eye, laser surgery is also capable of treating astigmatism during the procedure.

Ready to See Life Better? We're ready to help. Schedule your complimentary screening today.

REFER@MANNEYE.COM | 713.580.2506



KERATOCONUS RESOURCES

Mann Eye Institute

A decorative graphic on the right side of the page consists of a series of thin, light blue curved lines that sweep upwards and to the right. Overlaid on these lines are two thick diagonal stripes: a red one on top and a dark blue one below it, both extending from the bottom left towards the top right.

KERATOCONUS

Keratoconus Consultation Fee

File w/medical insurance
pt responsible for copay/deductible

Procedure

Description

Corneal Cross Linking Self-Pay

UV lamp and Vitamin B
(Riboflavin) treatment

\$2500/eye

Corneal Cross Linking Insurance

UV lamp and Vitamin B
(Riboflavin) treatment

File w/medical insurance
pt responsible of copay/deductible

CORNEAL CROSSLINKING (CXL)

KERATOCONUS DEFINED

Keratoconus is a degenerative eye disease in which the normally round cornea thins and begins to bulge into a cone-like shape, causing decreased best corrected vision, visual distortion, and intolerance to comfortable contact lens wear. Keratoconus typically first appears during adolescence and progression/worsening can continue into adulthood. Even though the exact cause is unknown, studies have shown excessive eye rubbing and certain underlying medical conditions have direct contributing factors to keratoconus.

In the early stages of keratoconus, vision can usually be corrected with glasses or contact lenses. When keratoconus is first detected, it is key to educate the patient on the importance of consistent annual eye exams to monitor the patient's corneal topographical mapping, rx changes, and vision changes. When progression of the disease is identified, our expert board-certified ophthalmologists at Mann Eye Institute are here for you with evaluation and treatment of keratoconus with a corneal crosslinking procedure.

CORNEAL COLLAGEN CROSSLINKING (CXL)

This treatment aims to stop the progression of keratoconus, preventing further deterioration in vision and the possible need for corneal transplantation. The crosslinking procedure is not a refractive procedure for eliminating the need for glasses and contacts. The patient's prescription will still require correction, likely with a specialty contact lens for best vision after treatment. During this minimally invasive, outpatient procedure, custom-made riboflavin drops saturate the cornea, which is then activated by ultraviolet light. This process has been shown in laboratory and clinical studies to strengthen and stabilize the cornea by creating new links between collagen fibers within the cornea. Our Mann Eye surgeons have been performing corneal crosslinking procedures for over 10 years. With several years of experience and collectively monitoring thousands of patients' corneas long term, our surgeons attest corneal crosslinking to be successful in halting the progression of the disease.

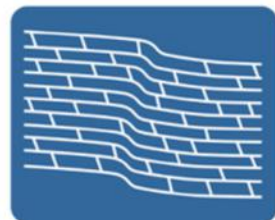
After the corneal crosslinking procedure has been performed, it is recommended to allow 3 months for healing. During this time, the patient should not experience any significant pain and after care restrictions are minimal. A common practice for scheduled medical office visits after crosslinking is 1-day, 1-week, 1-month, and 3-months.

A temporary (no prescription) soft bandage contact lens will be placed on the treated eye to aide in comfort and can be removed at the 1-week medical office visit. The patient will be prescribed medicated eye drops along with instructions to use preservative-free artificial tears several times a day throughout the healing process for added comfort and to minimize dryness.

For the patient to achieve optimal vision after the procedure, it is best to plan for a specialty contact lens fit after 3-months to minimize potential prescription changes. All visits before and after treatment can be with their primary eye doctor or at any Mann Eye location most convenient for them, while the corneal crosslinking procedure is performed at our Museo Fannin location.



BEFORE CXL
Less Crosslinking
= Weaker Cornea



AFTER CXL
More Crosslinking
= Stronger Cornea

Ready to See Life Better? We're ready to help. Schedule your appointment today!

REFER@MANNEYE.COM | 713.580.2506

RETINA RESOURCES

Mann Eye Institute



PHOTOBIO-MODULATION (PBM) TREATMENT

Procedure	Insurance	Patient Self-Pay (no insurance)
Retinal Examination	Copay/Deductible	Starts at \$300
Valeda™ Light Therapy PBM Treatments	Not covered by insurance	\$2,700 per session *

HOW VALEDA™ PBM THERAPY WORKS:

- Activates mitochondria to stabilize metabolic function
- Increases ATP production which is the cell's major energy source
- Enhances blood flow to the retina and surrounding tissue

TREATMENT OVERVIEW:

- 4 sessions per year up to 2 years
- 9 treatments per session over 3-5 weeks
- Each treatment takes 5 minutes per eye and uses three wavelengths of light

IDEAL CANDIDATES:

- Early or intermediate dry AMD with visible drusen.
- Visual acuity between 20/30 and 20/70.
- Patients looking to preserve or improve vision and delay disease progression.

*Sessions have a fixed price that is not affected by unilateral or bilateral therapy.

Valeda Light Therapy for Dry Age-Related Macular Degeneration (AMD)

Dry AMD has remained a stubborn challenge with few effective treatments, UNTIL NOW. Valeda™ Light Therapy, is the first FDA-approved treatment for dry AMD that has been shown to actually improve vision. All previous treatments for dry AMD have only been shown to reduce progression. Valeda uses specific wavelengths of light to perform photobiomodulation (PBM) of the retina to improve retinal health and even reverse some aspects of the disease.

Clinical Highlights:

- FDA-authorized treatment for dry AMD.
- 55% of patients in the LIGHTSITE III trial gained ≥5 letters of vision after 13 months.
- Safe, comfortable, and non-invasive therapy.

Ideal Candidates:

- Early or intermediate dry AMD with visible drusen.
- Visual acuity between 20/30 and 20/70.
- Patients looking to preserve or improve vision and delay disease progression.

Treatment Overview:

- 9 treatment sessions over 3–5 weeks (approximately 3 sessions per week).
- Each session just takes 5 minutes per eye and uses three wavelengths of light.
- Maintenance therapy recommended every 4 months.

Recognizing the Symptoms of AMD:



Straight lines appearing wavy



Difficulty seeing low light or at night



Blank or dark spots obscuring central vision



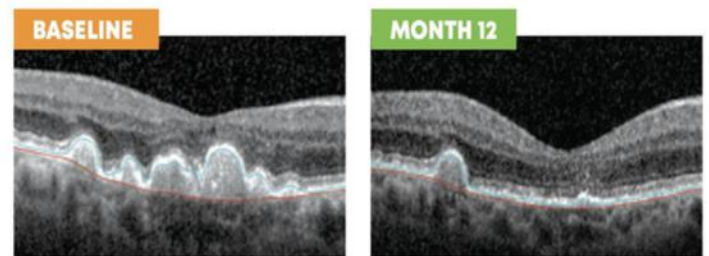
Blurry words and washed out colors

Why Trust Mann Eye Institute?

At Mann Eye Institute, we honor our legacy of excellence while embracing the future of vision care. Our Retina Specialists deliver innovative, patient-centered treatments designed to help you See Life Better. Valeda™ Light Therapy adds another powerful option to our full spectrum of retina care.

How Valeda™ PBM Therapy Works:

- Activates mitochondria to stabilize metabolic function.
- Increases ATP production which is the cell's major energy source.
- Enhances blood flow to the retina and surrounding tissue.



Decrease in macular drusen following Valeda Therapy

Potential Risks:

While PBM therapy has demonstrated a strong safety profile, dry AMD can still progress to wet AMD, which requires different management.

Schedule your comprehensive evaluation today!

REFER@MANNEYE.COM | 713.580.2506



OCULOPLASTICS

Mann Eye Institute





ROHAN VERMA, M.D.

OCULOFACIAL PLASTIC AND RECONSTRUCTIVE SURGERY

Rohan Verma, MD is a leader in eyelid, eyebrow, lacrimal and orbital surgery techniques with over 30 peer-reviewed publications and national meeting presentations. Dr. Verma is board-certified by the American Board of Ophthalmology and a member of the American Academy of Ophthalmology. He has taught oculoplastic and facial surgery to residents and fellows and has given lectures to domestic and international ophthalmologists, dermatologists, and cosmetic surgeons.

After graduating at the top of his class at University of California San Diego School of Medicine, he completed his ophthalmology residency at the UC San Diego Shiley Eye Institute. Throughout his training, he was awarded the Prather Endowed and Helen Hillyer academic scholarships, NIH research grants, and the Excellence in Ophthalmology Award for clinical, academic, and research accomplishments.

Dr. Verma completed a prestigious two-year fellowship with Drs. Roger Dailey and John Ng at the Oregon Health & Science University Casey Eye Institute, one of the few select training programs in the United States accredited by the American Society of Ophthalmic Plastic and Reconstructive Surgery (ASOPRS). Here he excelled in the cosmetic and functional aspects of oculofacial plastic surgery and performed the highest number of surgical procedures and cosmetic facial injections in the country as a fellow. Dr. Verma received the Bartley Frueh Award for Best Young ASOPRS oral presentation and the ASOPRS travel grant to the International Thyroid Eye Disease Society symposium in Seoul, Korea.

Dr. Verma comes to Houston from Los Angeles. As Division Leader for the Oculofacial Plastic and Reconstructive Surgery Service at the Southern California Permanente Medical Group, he was recognized for his comprehensive examination and treatment plans tailored toward each patient's goals. He prioritizes improvement in the lifestyle of his patients by providing rejuvenating, natural results while minimizing downtime. For Dr. Verma, there is nothing more rewarding than returning a patient's identity through restoration of the face's natural beauty and function while preserving vision.

Oculoplastic services provided by Dr. Verma:

<u>Aesthetics</u>	<u>Eyelids</u>	<u>Lacrimal</u>	<u>Orbit</u>
Endoscopic Brow lift	Upper & Lower eyelid lifts	Nasolacrimal duct	Tumors
Forehead lift	Dermatochalasis	Obstruction	Thyroid eye disease
Face & neck lifts	Ptosis	Canaliculitis	Inflammation
Cheek lift	Malposition	Dacryocystitis	Fractures
Dermal Fillers & Botox	Chalazions	Lacrimal sac tumors	
Endoscopic Forehead Lift	Mohs reconstruction		

Physician Liaisons

Tina Redmon, COA,ROUB,OSC
713-824-8132 voice/text
Tina.redmon@manneye.com

Sarah Rackel
713-206-0312 voice/text
srackel@manneye.com

HOUSTON 5115 Fannin St. Houston, TX 77004	HUMBLE 18850 S. Memorial Blvd. Humble, TX 77338	KATY 750 Westgreen Blvd. Katy, TX 77450	SUGAR LAND 6424 E. Riverpark Dr. Sugar Land, TX 77479	THE WOODLANDS 17450 St. Luke's Way The Woodlands, 77384
--	--	--	--	--

Referrals/Scheduling Department

713-580-2506 voice/text
713-580-2507 efax
refer@manneye.com

