

—
BLOQ

creative
carpet tiles



THE TEXTURED
POS&NEG

Part of The Textured

The Textured collection plays with soft tones and textures. Its tactile look is inspired by coarsely woven fabrics such as linen. As part of The Textured collection, POS&NEG features an organic and arrhythmic play of contrast, on 50 x 50 cm tiles.



Contrast



Textures



Tactility

THE TEXTURED
POS&NEG





Inspiration
is everywhere

Play of contrast

The design of POS&NEG is inspired by the bark of a tree. Positive and negative come together in a playful yet elegant combo of light and dark.

The collection is composed of soft pastel colours in two opposite shades: POS and its mirror image NEG.



POS 816 NUT



NEG 817 PINE



©Painting: Poukë Halpern



NEG 817, POS 816



POS 231, NEG 232



©Painting: Pouke Halpern

NEG 232



POS 231 TEA

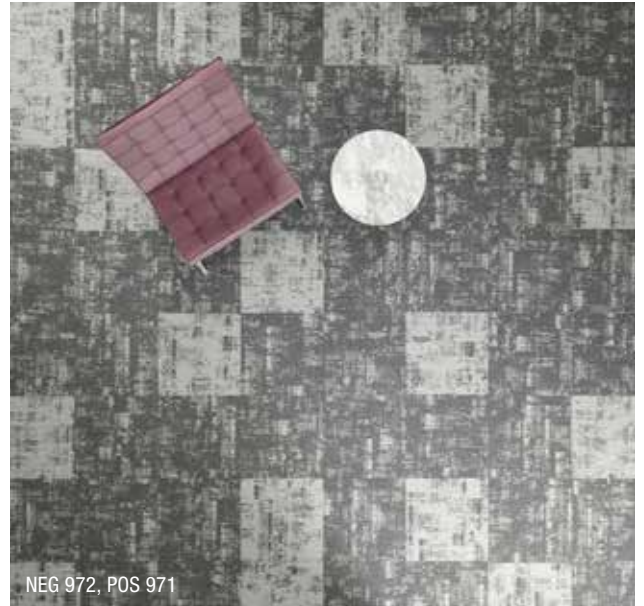


NEG 232 PEAR





POS 971



NEG 972, POS 971

Apart or together

POS and NEG are statement designs on their own, but equally strong when combined. Just like Yin and Yang. Combine them cleverly to create a balanced result. In a checkerboard or running bond pattern, for a sense of duality that adds dimension to your floor design.



POS 971 GRIT



NEG 972 FOG

Made with
colourfast yarns



POS 626 FENNEL



NEG 627 ROSEMARY



©Painting: Pouke Halpern



POS 626, NEG 627

Colour range

Ranging from warm to cold, but natural above all: the collection features eight soft pastel colours and darker shades. Each in POS and NEG versions. The bark-inspired tiles match perfectly with designs from the rest of The Textured collection, such as these tones from CANVAS.

*Matching
Canvas tones*
←



POS 221 SALMON

NEG 222 PEACH



CANVAS 220 MELON



POS 226 CORN

NEG 227 DUNE



CANVAS 225 AMBER



POS 231 TEA

NEG 232 PEAR



CANVAS 230 LIME



POS 816 NUT

NEG 817 PINE



CANVAS 815 OLIVE

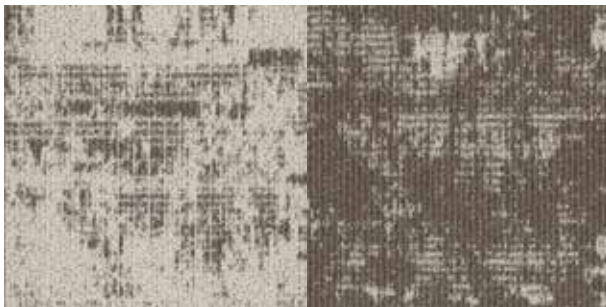


POS 626 FENNEL

NEG 627 ROSEMARY



CANVAS 625 SAGE



POS 821 CELERY

NEG 822 CEDAR



CANVAS 820 TIMBER



POS 980 SILT

NEG 981 FOSSIL



CANVAS 935 SLATE



POS 971 GRIT

NEG 972 FOG



CANVAS 970 STORM





POS 221, NEG 222, CANVAS 220

Dare to mix

Any combination with CANVAS makes for a striking, interesting and varied result. Be as bold as you like. You can incorporate a multitude of CANVAS tiles for a rather serene effect, while a majority of POS&NEG tones will produce an entirely different look. The possibilities are endless.



POS 221 SALMON



NEG 222 PEACH



CANVAS 220 MELON



NEG 981

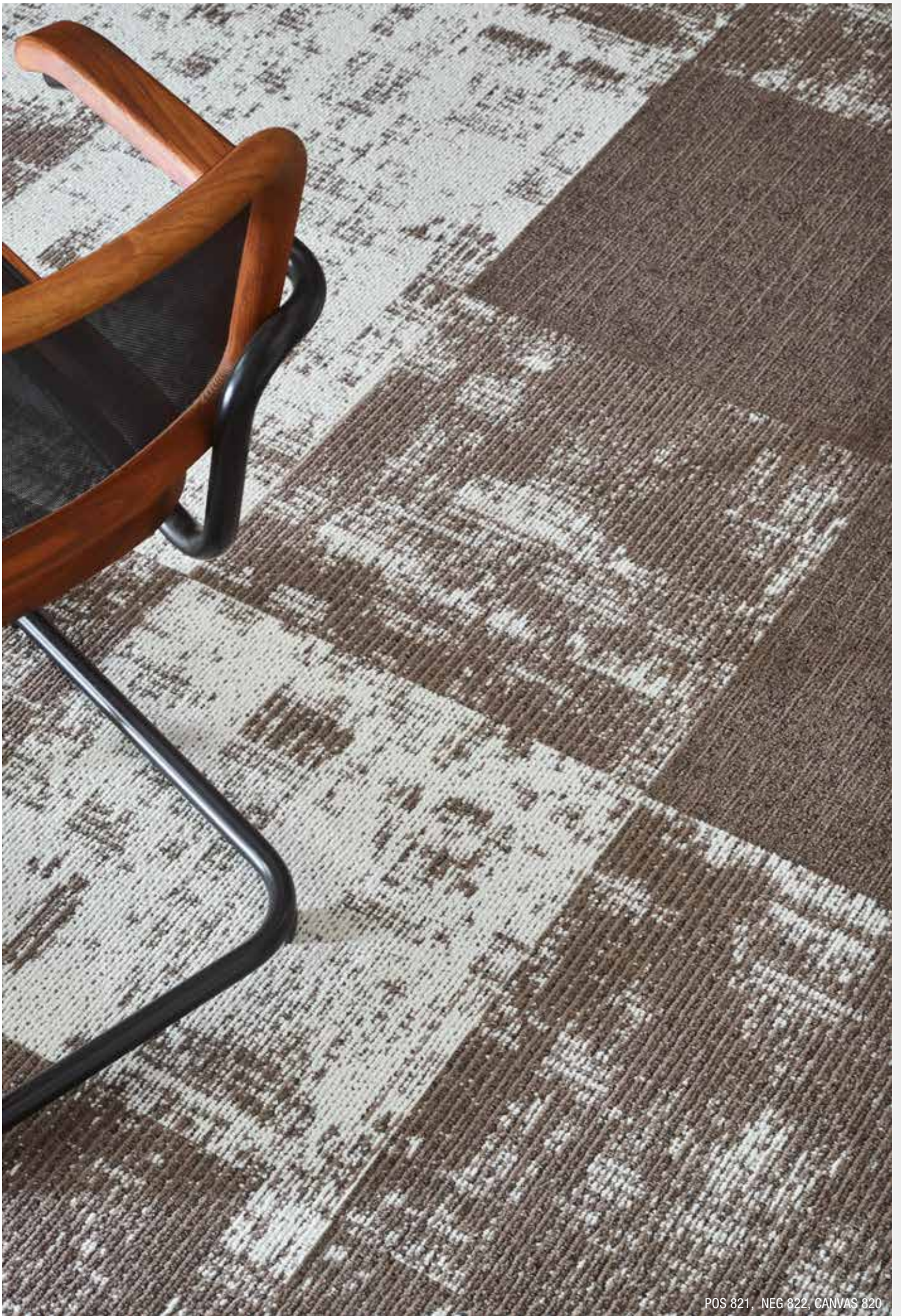


POS 980 SILT



NEG 981 FOSSIL





POS 821, NEG 822, CANVAS 820



©Painting: Povuké Halpern

POS 821, NEG 822, CANVAS 820



POS 821 CELERY



NEG 822 CEDAR



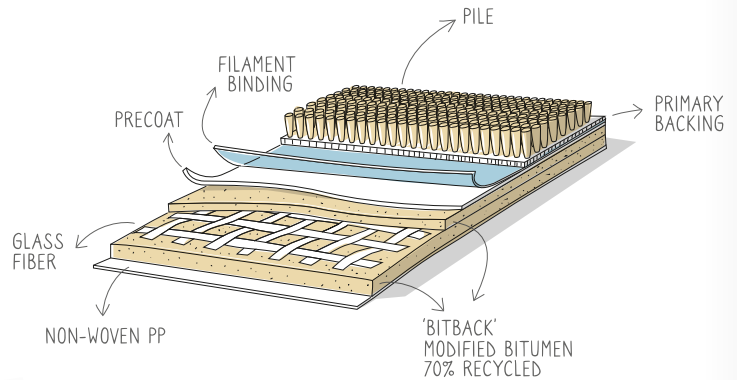
CANVAS 820 TIMBER

Highlights

DIMENSIONAL STABILITY & HIGH PERFORMANCE

BLOQ uses **glass fiber fleece**, which gives more dimensional stability ($\leq 0.2\%$). The **durable quality** is guaranteed by multiple certifications:

- Commercial heavy classification (Class 33 - EN 1307)
- Suitable for castor chairs (EN 985)
- Colour fastness to light (EN ISO 105-B02)



SOLUTION DYED YARNS

BLOQ uses 100% Polyamide 6 Solution Dyed Nylon from **Aquafil**, the best and leading supplier for carpet manufacturers.

Solution dyed means **better colour fastness** and the best results to light and water.

LIGHT REFLECTANCE VALUES

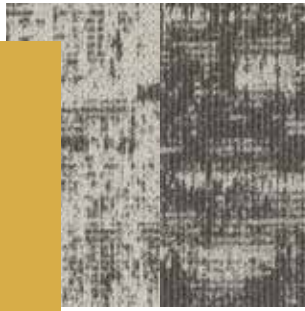
Light Reflectance Value (LRV) is a scale that measures visible and usable light reflected from an illuminated surface. The percentage identifies how much light a colour reflects or absorbs. 0% reflects no visible light, 100% reflects all light.

POS	LRV _{av}	L
971	41.61	70.60
221	40.70	69.97
226	38.48	68.37
231	40.28	69.67
980	40.68	69.95
821	36.95	67.24
816	34.39	65.27
626	39.78	69.31

NEG	LRV _{av}	L
972	23.48	55.57
222	23.69	55.78
227	24.28	56.36
232	20.73	52.66
981	15.57	46.42
822	17.54	48.93
817	20.89	52.83
627	20.06	51.90

BLOQ

creative
carpet tiles



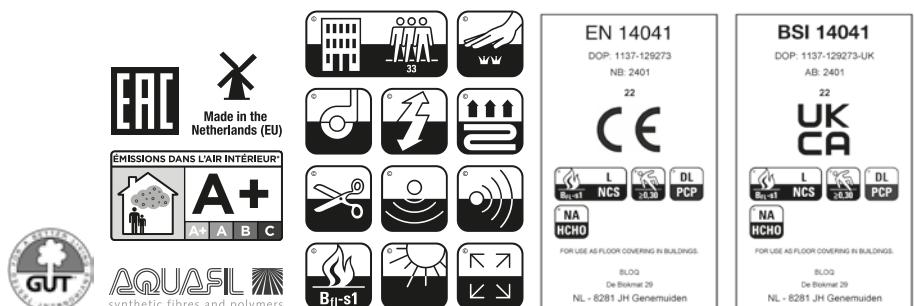
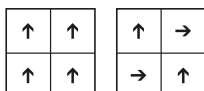
THE TEXTURED POS&NEG

SPECIFICATIONS

TYPE OF MANUFACTURE	Tufted Patterned Loop Pile 1/10"
	ISO 2424
PILE FIBER COMPOSITION	100% Polyamide 6
	ISO 2424 Solution Dyed Nylon made by Aquafil
SECONDARY BACKING	Bitback, Modified Bitumen
	ISO 2424 70% Recycled Content
DIMENSION	50 x 50 cm
	EN ISO 24342
PILE WEIGHT	750 g/m ²
	ISO 8543
SURFACE PILE WEIGHT	550 g/m ²
	ISO 8543
TOTAL WEIGHT	4 400 g/m ²
	ISO 8543
TOTAL THICKNESS	7.4 mm
	ISO 1765
PILE HEIGHT	4.3 mm
	ISO 1766
PILE DENSITY	0.128 g/m ³
	ISO 8543
NUMBER OF TUFTS	152 700 /m ²
	ISO 1763
DIMENSIONAL STABILITY	≤ 0.2%
	ISO 2551
NUMBER OF COLOURS	16
PACKAGING	Box: 20 tiles / 5 m ² Pallet: 200 m ²

PERFORMANCE

CLASSIFICATION	33
	EN 1307
LUXURY RATING	LC2
	EN 1307
CASTOR CHAIR RATING	A: Intensive use
	EN 985
FIRE CLASSIFICATION	B _{fl} -s1
	EN 13501-1
IMPACT SOUND INSULATION	ΔL _w : 28 dB
	EN ISO 10140-3
SOUND ABSORPTION	Frequency Hz 125 250 500 1000 2000 4000
	EN ISO 354 α _s 0.00 0.05 0.10 0.20 0.40 0.50
NOISE REDUCTION	α _w : 0.20
	EN ISO 354
PERMANENT ANTISTATIC	≤ 2 kV
	ISO 6356
TRANSVERSAL RESISTANCE	≤ 1 X 10 ⁹ Ohm
	ISO 10965
THERMAL RESISTANCE	0.085 m ² K/W
	ISO 8302
COLOUR FASTNESS TO LIGHT	≥ 7
	EN ISO 105-B02
COLOUR FASTNESS TO WATER	≥ 4
	EN ISO 105-E01
RUBBING FASTNESS	≥ 4
	EN ISO 105-X12
GUT N° PRODIS	BC5AB0C0



All rights reserved to alter technical specifications.



Part of **betap**[®]

www.bloq.nl