



The LBIHA Gazette

Fall, 2025

We wrapped up a fantastic summer and are gearing up for a productive fall season!



What's Inside

- A Message from the President
- 2025 Summer Recap
- NJ Archival Film Festival
- Celebrate the Seasons
- Collection Spotlight
- And more...



2025 Summer Recap

OH, WHAT A SUMMER IT WAS!

It's during these beautiful months that we truly feel the essence of togetherness, and the Long Beach Island Historical Museum is proud to serve as a hub for these wonderful experiences and connections. Together, we can continue to explore and cherish our history!

LBI Historical Association & Museum

129 Engleside Ave, Beach Haven, NJ 08008 | www.lbihistoricalmuseum.org | 609-492-0700

A Message from the President

As the weather shifts to crisp mornings and cool evenings, we begin winding down from another vibrant summer season at the museum. We're excited to share several important updates with you.


Earlier this year, we completed a historic preservation assessment of our museum building, which dates back to 1882 and is listed on the National Historic Registry. With the help of our architectural team, the board has prioritized a five-year plan of capital improvements. Work is already underway: thanks to the support of our sponsors, we are replacing a failing A/C unit on the east end of the building. Upcoming projects include improving handicap and wheelchair access, porch and belltower repairs, roof and lighting upgrades, and more. Our building itself is our largest artifact and a cherished example of Victorian design that we have carefully stewarded for 50 years.

As many of you know, 2025 marks the 50th anniversary of the Long Beach Island Historical Association, founded in 1975 to open and operate the museum. Outside the front entrance you'll find a display commemorating the signing of the LBIHA charter, along with a plaque honoring all past presidents of the Association.

Fall also brings a bittersweet farewell to our summer interns from Rutgers, Stockton, and the University of Maryland. Their work in archives, digital projects, events, photography, and more has been invaluable. We wish them a successful school year and hope to see them again in the future.

Though the museum is now closed for the season, preparations are well underway for the museum's 50th anniversary in 2026. We look forward to a celebratory year filled with beloved traditions, fresh new programs, and reimagined events.

Finally, none of this would be possible without our dedicated volunteers. As we wrap up the season, we extend our deepest gratitude—and we are also looking ahead to growing our volunteer team.


Denise Cleveland, Ed.D.

Work with us today

We're looking for enthusiastic volunteers to help us bring the island's past to life – and ensure its stories continue to inspire future generations.

No history degree required – just a love for LBI and a willingness to lend a hand. We'll provide all the training and support you need. Join our volunteer family and be part of something lasting.

Whether you have just a few hours a week or more to share, there's a role for everyone.

- Social Media*
- Website administration*
- Archive Support
- Office Administrator
- Volunteer Coordinator
- Fundraising Committee (Partial remote possible)
- Sponsorship & Membership Committee (partial remote possible)
- Grant Writing*
- Event Support
- Docents

Visit our **website** to request more information.
(*) Indicates role can be done remotely.

NEW JERSEY ARCHIVAL FILM FESTIVAL



10 AM
to
4 PM

**Saturday
November 1, 2025**

Monmouth
University's
Great Hall

Sponsored by the
Bruce Springsteen Archives & Center for American Music,
the New Jersey Studies Academic Alliance, &
the MARAC New Jersey Caucus

NJ Archival Film Festival

We're proud to share that the New Jersey State Academic Alliance (NJSAA), in partnership with the Mid-Atlantic Regional Archives Conference (MARAC), has selected our Island Voices video, Jeanette Lloyd and Martha Kremer: An LBI Childhood and Friendship from the 40s to the 70s, for inclusion in the first-ever New Jersey Archival Film Festival.

The film will be screened on Friday, November 1, at Monmouth University in the historic Great Hall—a magnificent early-1900s building celebrated for its Beaux Arts, French Chateau, and Italian Renaissance architecture. The Festival is from 10:00 AM - 4:00 PM and is open to the public.

Celebrate the Season!

Create and Celebrate with Santa's Elves.

Join us for an afternoon of fun and creativity! Maker projects include Holiday Candy Houses, Ornaments, Pinecone Bird Feeders, Glitter Stars and more!

Write letters to Santa and then meet him in person! Fun for the whole family!

Celebrate the Season!

WINTER WONDERLAND

IN THE MUSEUM

Create and Celebrate with Santa's Elves

Saturday, November 29
12:00 - 3:00 PM

Visit with Santa!

Fun for Everyone!

Maker Projects

R.S.V.P. Online

A graphic celebrating the 50th anniversary of the Long Beach Island Museum. It features a blue banner at the top with the text '50th Anniversary Events'. Below the banner, on the left, is a photograph of gold balloons and confetti. To the right of the photo, the text '50 Years' is written in large, bold, gold letters. Below this, in black text, it says 'Join us as we celebrate five decades of preserving LBI History!'. The background is white with gold confetti and blue wavy lines at the bottom.

50th Anniversary Events

The Museum Turns 50!

Wow! Can you believe it? The Long Beach Island Museum has been the heart and soul of our community since it opened its doors back in the summer of '76—almost 50 years ago.

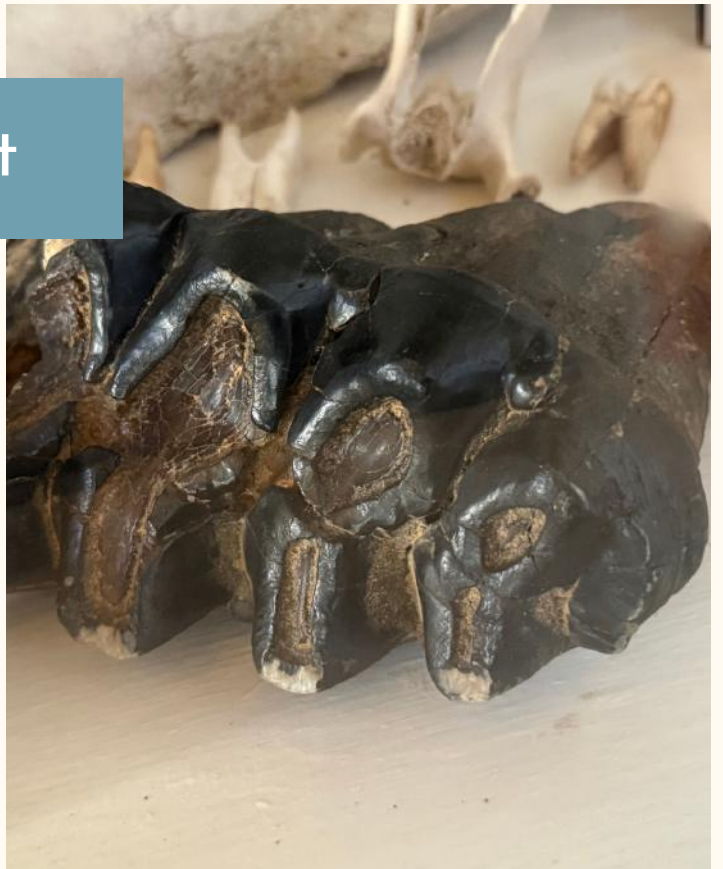
As we gear up for this monumental milestone, we will be rolling out a series of fun-tastic fundraising events to commemorate the anniversary. This celebration is all about coming together, reliving our colorful past, and making those unforgettable memories with friends and family.

So, watch for announcements of these events in the coming months!

Collection Spotlight

The American mastodon (*Mammut americanum*) lived in North and Central America from about 3.5 million years ago until its extinction 10,000–11,000 years ago.

Many mastodon and other prehistoric fossils have been dredged off the Ocean County coast, and the LBI Historical Museum features a mastodon tooth among its fossil and artifact displays. Come explore our collection.





Preserve the Past Support the Future

The LBI Historical Association & Museum, housed in a beautiful 1882 building on the National Register of Historic Places, is turning 50 years old – and we're planning for the next 50.

Every time a child walks in with wonder in their eyes or an adult smiles at a memory from years ago, we're reminded how powerful this place truly is.

Join us in protecting the stories that shaped LBI.

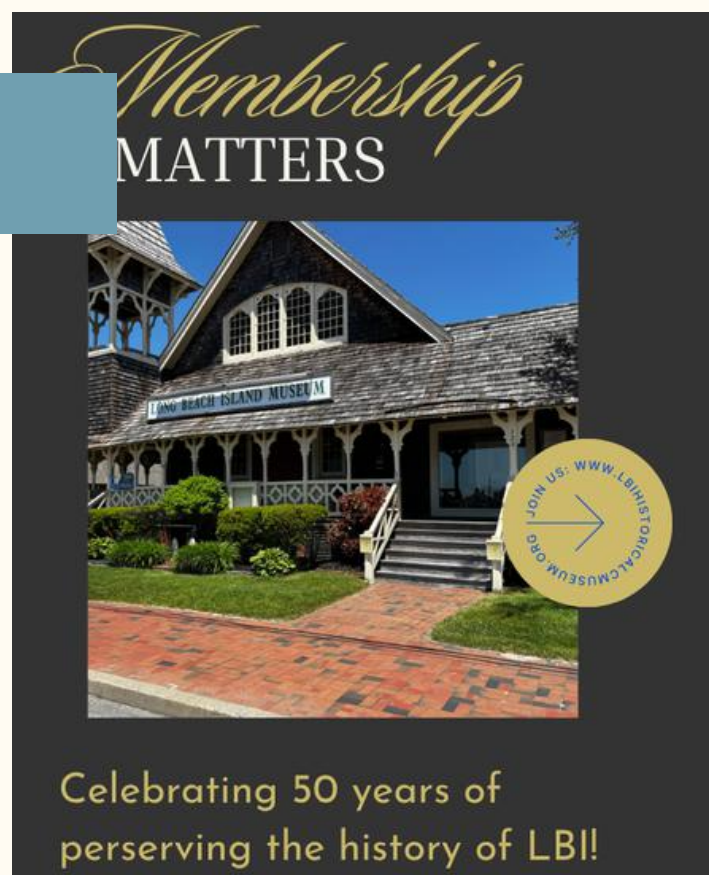
[Donate today.](#)

Membership Does Matter

Your membership is vital to our mission of preserving and sharing LBI's cultural heritage by contributing to a legacy that will inspire future generations.

We are thrilled to welcome over 50 new members in the first half of 2025 and remind you of the many benefits of your support, including free admission, store discounts, and exclusive event access. [Join today!](#)

[Check Out Our Member Spotlight](#)



A portrait of Joseph "Rusty" Johnson, a middle-aged man with short, graying hair, wearing a light-colored button-down shirt with a small grid pattern. He is smiling slightly and looking towards the camera. In the background, a framed picture of a landscape is visible on the wall.

Member Spotlight Joseph "Rusty" Johnson

Hello, my name is Rusty Johnson, I have been coming to Long Beach Island my whole life. On my father's side, my great grandparents, grandparents, cousins, and father have been coming to Long Beach Island since the early 1900's. My grandparents purchased their first house in Brant Beach in 1954. Two of their neighbors were the Stutz and Bond families. By marriage I am distantly related to a few of the families who helped build and settle the island in the early 1900's.

Having been exposed to pictures, stories, distant cousins, etc. at an early age, these interactions sparked an interest in the history of the island. The deep dive into history really got going when I got into my 50's and it continues to this day.

My first visit to the museum was probably in my late 30s. I'm 100% certain it was a rainy day and we needed to get out of the house, because it was a small bungalow, so we headed down to the museum to see what it was all about. Also, being that this had been the Episcopal Church, we spent time here on weekends in the summer on Sundays.

The thing I remember most about my first visit to the museum were the displays and how they put a timeline and picture story in my mind about all that I had heard overtime. It put the pieces together for me, which led me to begin reading all of the different books I could find about Long Beach Island, over the next many years.

My favorite displays are the one about the railroads and the famous people who help build and develop Beach Haven. If you want a kind of neat piece of "trivia" check out the history of the Waverly hotel. Now known as the Hudson House, or called the "Hud" to the locals.

A number of times over the next many years I would visit the museum with family and friends, always on rainy days, to share the history of our island with them. There is so much more to the island than just it being a vacation spot.

Two years ago, I moved to the family home in Brant Beach where I now reside. I retired a few months later and I knew that I needed to keep busy. After hearing a presentation by the LBI Historical Association & Museum about the railroads and learning that there were volunteer opportunities I knew that the museum was the perfect place for me. I now spend time as a docent to help others understand about Long Beach Island and its great heritage.

Thank you, Rusty!

Thank you to our 2025 Sponsors!

Our Sponsors play a crucial role in supporting our mission and educational programs. Many of our sponsors are local businesses as well as families and individuals!

Their generous annual contributions provide essential funding which allows us to create, expand, and enhance the museum experience for all. We value our sponsor's contributions and look forward to forging strong and lasting partnerships.

[See our 2025 Sponsors on our website!](#)



Join us at the museum...
where stories from the past spark memories for the future.



129 Engleside Avenue, Beach Haven, NJ 08008



www.lbihistoricalmuseum.org



609-492-0700



Long Beach Island Historical Association received funding from a grant administered by the Ocean County Cultural and Heritage Commission from grants funded by the New Jersey Historical Commission, a division of the Department of State.

LBIHA is a qualified organization of the New Jersey Cultural Trust.
The LBIHA is a certified 501(c)(3) organization.

