



Limotec

Perfection in Detection

FM-S-030-V1-EN

REACH wireless

Flexible — Reliable — Practical

The Reach Wireless fire detection system is a flexible solution for installing fire detection components in hard-to-reach areas, historic buildings or temporary structures.

**REACH**
WIRELESS



A Halma company - Infrastructure Safety

Limotec bv
Bosstraat 21, B-8570 Vichte
www.limotec.be

REACH WIRELESS APPLICATIONS

The Reach Wireless wireless fire detection system is EN54-25 certified.

With Reach Wireless, a wired **MD2400/MD2400L or MD2400SA fire detection system** can be extended with wireless components.

The REACH Wireless loop interface connects to the wired circuit in loop form and can monitor up to a maximum of 32 REACH Wireless components. The REACH Wireless loop interface is **compatible with the Apollo XP95 protocol** and can therefore be used on the C.I.E. MD2400/MD2400L and the C.I.E. MD2400SA. *(Note : the REACH Wireless detection system is not mentioned on the EN54- 13 certificate of the MD2400/MD2400L and MD2400SA fire detection systems).*

The Reach Wireless loop interface is equipped with a **short-circuit isolator as standard** and includes a multi-angle antenna to achieve maximum signal coverage.

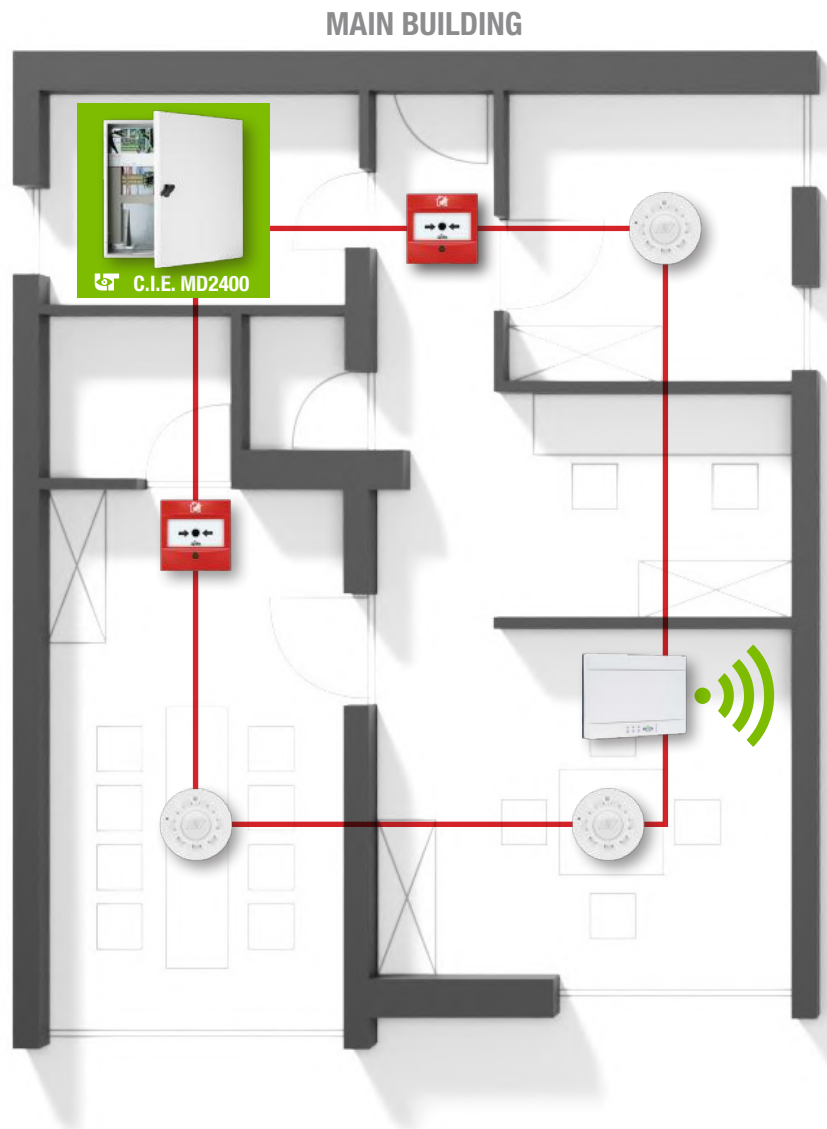
Wireless communication is based on a technology with a choice of 44 RF channels that operate as 22 redundant pairs as a function of reliability.

Each REACH Wireless component receives a unique XP95 address from the REACH Wireless loop interface via a system of soft addressing and consequently communicates individually with the C.I.E. MD2400/MD2400L or the C.I.E. MD2400SA. Each REACH Wireless component contains two batteries of type CR123.

During the system design phase, the number of REACH loop interfaces required and their correct mounting location can be determined using the **REACH Survey Kit Lite**, and this as a function of the number of REACH Wireless components.

PRODUCT FEATURES

- Up-to 32 wireless devices per REACH loop interface
- Radio range : 80 meters (clear line of sight)
- Compatibel with the MD2400 XP95 standard loop interface, MD2400 high power loop interface & MD2400SA core loop interface
- Maximum 1 REACH loop interface per XP95 standard loop interface (MD2400/MD2400L)
- Maximum 4 REACH loop interfaces per XP95 high power loop interfaces (MD2400/MD2400L)
- Maximum 1 REACH loop interface per core loop interface (MD2400SA)
- XP95 adress per REACH loop interface and per wireless component
- Supply voltage REACH loop interface : Loop powered – no separate 24Vdc supply voltage required.
- Consumption REACH loop interface : 40mA @ 24Vdc
- Built-in short-circuit isolator
- Batteries : 2 x CR123 per wireless component

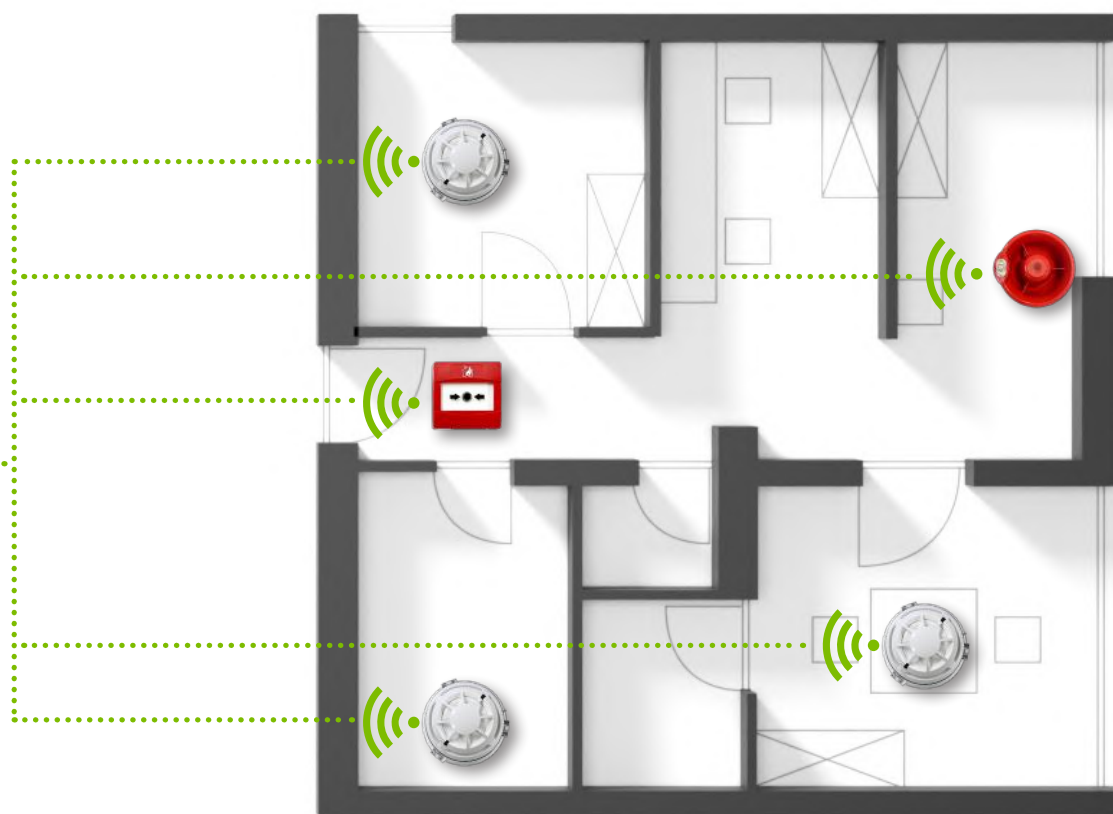


REACH WIRELESS ORDER CODES

RW1000-600	REACH wireless addressable optical smoke detector - white	RW1000-660	Black design
RW1000-700	REACH wireless addressable multisensor detector - white	RW1000-760	Black design
RW1000-400	REACH wireless addressable heat detector - white	RW1000-460	Black design
RW1300-110	REACH wireless addressable sounder base - white	RW1000-160	Black design
RW1300-211	REACH wireless addressable sounder VAD base - white	RW1000-260	Black design
RW1500-120	REACH wireless addressable open-area wall sounder (red)		
RW1500-220	REACH wireless addressable open-area wall sounder VAD		
RW1700-030	REACH loop interface		
RW1700-051	REACH wireless addressable input module		
RW1700-052	REACH wireless addressable output module (not compatible with MD2400SA)		
RW1900-901	REACH wireless addressable call point (red)		
RW1800-060	REACH Survey Kit Lite - Receiving range measurement kit		



EXTENSION



REACH WIRELESS PRODUCT RANGE



Wireless addressable optical smoke detector with standard base*

Art.: RW1000-600

Dual-optical smoke detection technology for improved performance.

Dimensions (Ø x H) : 110 x 70mm

IP rating : IP40



Wireless addressable manual call point

Art.: RW1900-901

Dimensions (H x W x D) : 87 x 88 x 61mm

Weight : 160 g

IP rating : IP30



Wireless addressable multisensor detector with standard base*

Art.: RW1000-700

Equipped with a dual-chamber optical smoke sensor and rate-of-rise (A1R) heat detector.

Dimensions : (Ø x H): 110 x 70mm

IP rating : IP40



Wireless addressable open-area wall sounder

Art.: RW1500-120

Sound output : 88 to 91dB(A)

Dimensions (H x W x D) : 132 x 126 x 90mm

Weight : 350 g

IP rating : IP35



Wireless addressable heat detector with standard base*

Art.: RW1000-400

Offering either static (BS) or rate-of-rise (A1R) functionality .

Dimensions (Ø x H) : 110 x 70mm

IP rating : IP40



Wireless addressable open-area wall sounder VAD

Art.: RW1500-220

Sound output : 88 to 91dB(A)

Dimensions (H x W x D) : 132 x 126 x 92mm

Weight : 350 g

IP rating : IP35



Wireless addressable sounder base*

Art.: RW1300-110

Can be used as a combined solution with a REACH wireless detector.

Sound output : 88 to 91dB(A)

Dimensions (Ø x H) : 129 x 54mm

IP rating : IP21C



Wireless addressable input module

Art.: RW1700-051

Dimensions (H x W x D) : 136 x 96 x 57mm

IP rating : IP65



Wireless addressable sounder VAD base*

Art.: RW1300-211

Can be used as a combined solution with a REACH wireless detector.

Sound output : 88 to 91dB(A)

Dimensions (Ø x H): 129 x 54mm

IP rating : IP21C



Wireless addressable output module

Art.: RW1700-052

Dimensions (H x W x D): 136 x 96 x 57mm

IP rating : IP65

Not compatible with MD2400SA



Reach Survey Kit Lite

Art.: RW1800-060

The RW1800-060 is a portable, battery-powered toolkit to measure the signal strength of the REACH Wireless system before it is installed in a building.



Loop interface

Art.: RW1700-030

Supply voltage : 17 – 35Vdc

Current consumption : 40mA@24Vdc (pic)

Maximum number of connected devices : 32

Dimensions (H x W x D) : 160 x 236 x 70 mm

IP rating : IP65

* The Reach Wireless detectors en sounder bases are also available in a black design.