

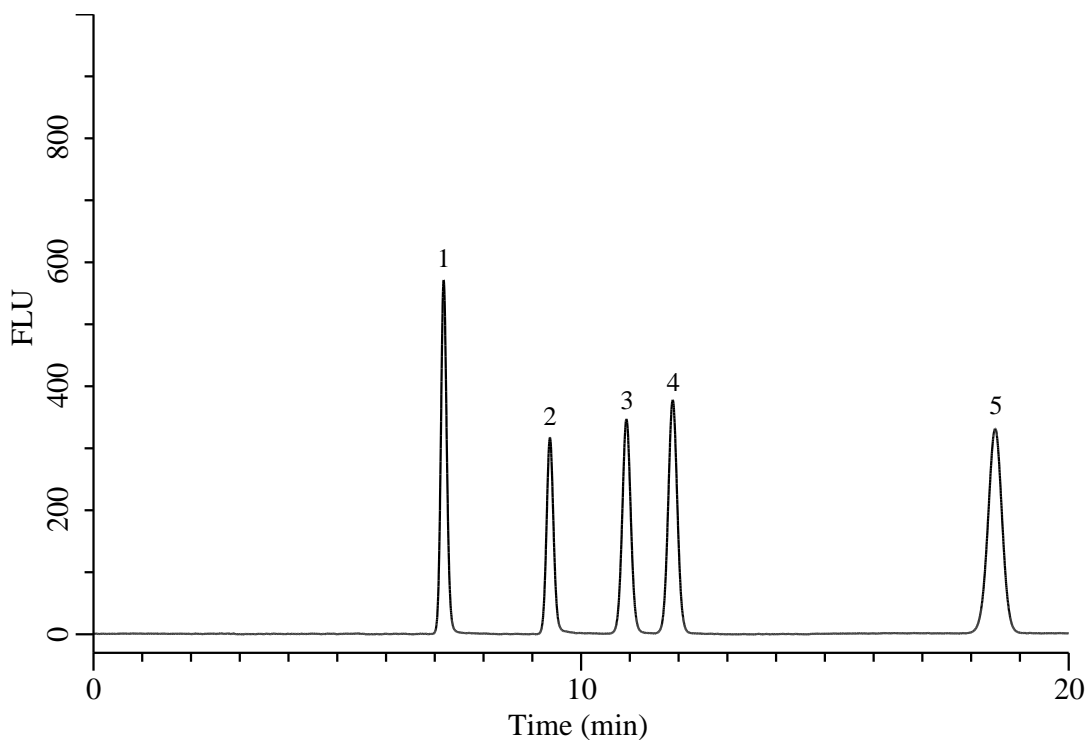
# InertSearch for LC

Inertsil Applications

## Analysis of Tocopherols

(Under the Condition of food additive analysis method in food)

Data No. LB825-1087



### Conditions

**System** : Chromaster HPLC system (HITACHI)  
**Column** : Inertsil SIL-100A (GL Sciences Inc.)  
(5  $\mu$  m, 250 x 4.6 mm I.D.)  
**Column Cat. No.** : 5020-01712  
**Eluent** : *n*-Hexane/2-Propanol/Acetic acid = 1,000/6/5, v/v/v  
**Flow Rate** : 1.0 mL/min  
**Col. Temp.** : 30 °C  
**Detection** : FL Ex 298 nm, Em 325 nm  
**Injection Vol.** : 4  $\mu$  L  
**Sample** : Standard

### Analyte:

1. dl- $\alpha$ -Tocopherol	16 mg/L
2. 2,2,5,7,8-Pentamethyl-6-chromanol	5 mg/L
3. dl- $\beta$ -Tocopherol	16 mg/L
4. dl- $\gamma$ -Tocopherol	16 mg/L
5. dl- $\delta$ -Tocopherol	16 mg/L