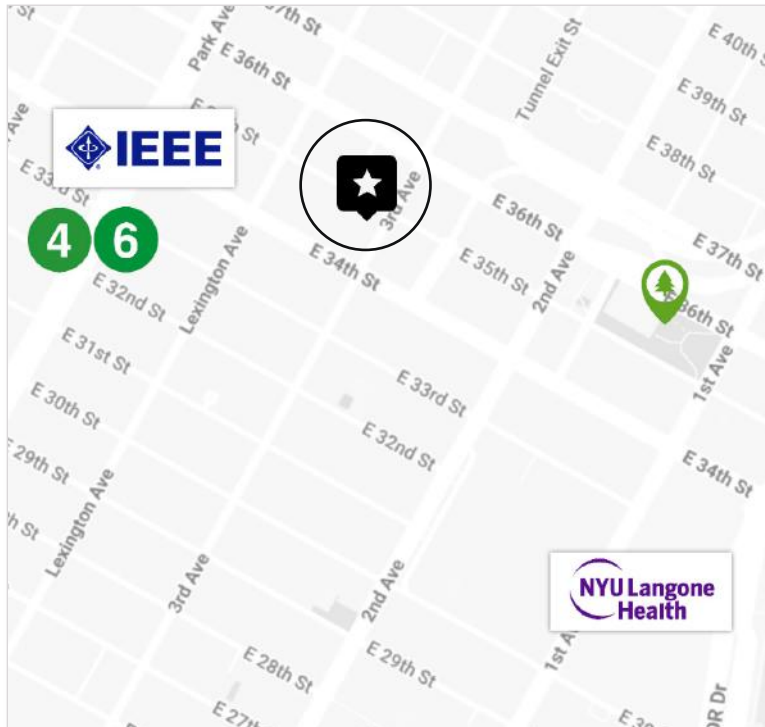




GROUND FLOOR  
**MEDICAL OFFICE**  
FOR LEASE

PRICE	INQUIRE
APPROX SIZE	419+/- RSF
TERM	NEGOTIABLE
POSSESSION	IMMEDIATE



**166 EAST 35TH STREET, SUITE 1A**  
BETWEEN LEXINGTON AVENUE AND 3RD AVENUE

## LAYOUT

- TWO OFFICES/CONSULTS
- ONE OFFICE/WAITING AREA
- KITCHENETTE
- RESTROOM

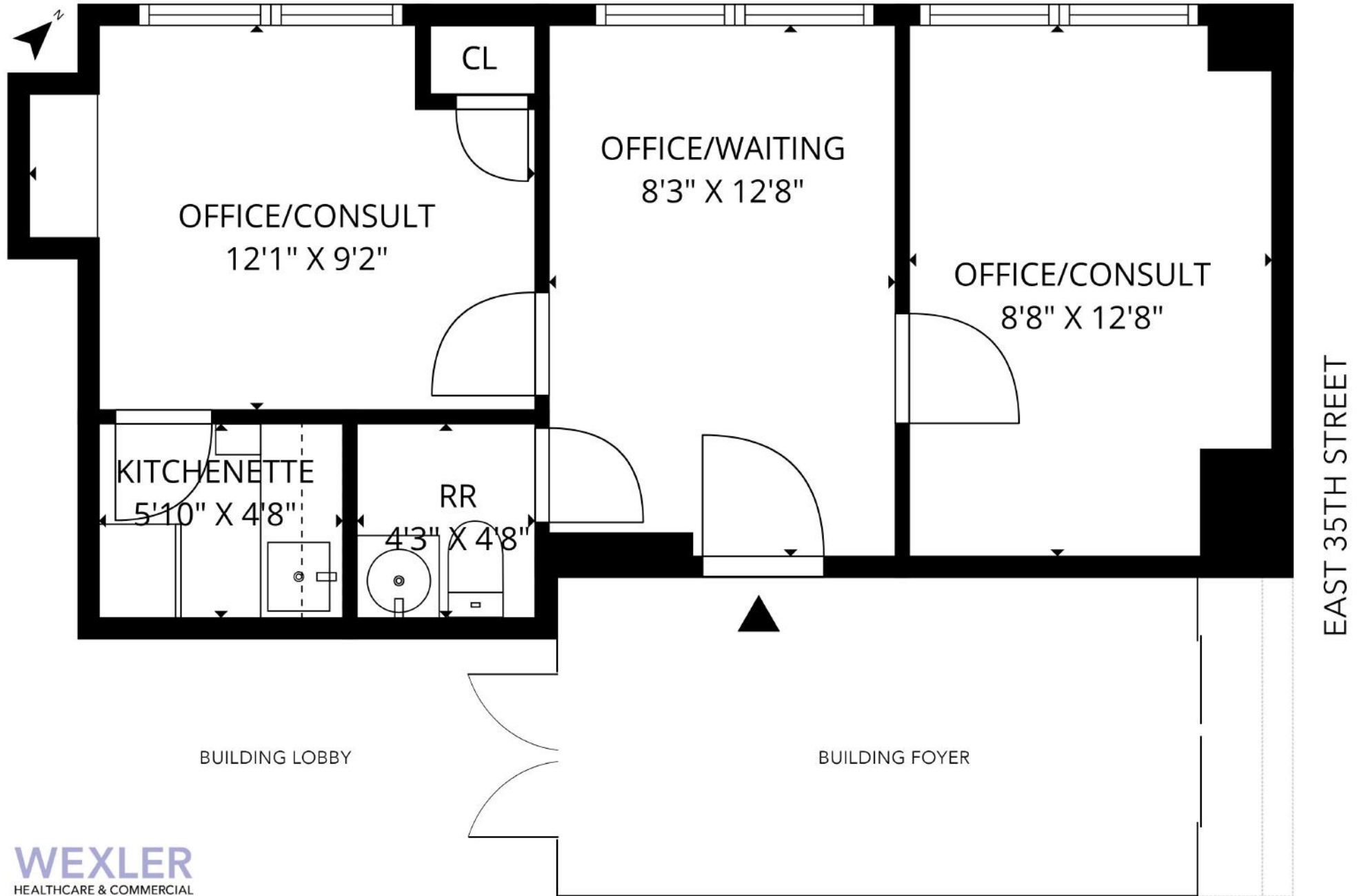
## ADDITIONAL FEATURES

- PRIVATE STREET ENTRANCE EAST 35TH STREET
- ADAPTABLE TO ANY MEDICAL SPECIALTY AND MANY PROFESSIONAL SERVICE BUSINESSES



## FLOOR PLAN • CURRENT

FOR ILLUSTRATIVE PURPOSES ONLY.  
SIZE AND DIMENSIONS MAY VARY.





## Paul L Wexler

Licensed Associate Real Estate Broker

P: 212.836.1075

E: PWexler@corcoran.com



## Josef Yadgarov

Licensed Associate Real Estate Broker

P: 212.836.1097

E: JYadgarov@corcoran.com



## Alisia Ramlochan

Licensed Associate Real Estate Broker

P: 212.893.1450

E: Alisia.Ramlochan@corcoran.com



## Kurt Herold

Licensed Associate Real Estate Broker

P: 212.323.3817

E: KHerold@corcoran.com



## Cosmin Bită

Licensed Real Estate Salesperson

P: 917.602.5754

E: Cosmin.Bită@corcoran.com



## Austin Weinerman

Licensed Real Estate Salesperson

P: 212.323.3280

E: AWeinerman@corcoran.com



**FIND THE PERFECT SPACE AT**  
**WEXLERHEALTHCAREPROPERTIES.COM**

Real estate agents affiliated with The Corcoran Group are independent contractors and are not employees of The Corcoran Group. Equal Housing Opportunity. The Corcoran Group is a licensed real estate broker located at 590 Madison Ave, NY, NY 10022. All information furnished regarding property for sale or rent or regarding financing is from sources deemed reliable, but Corcoran makes no warranty or representation as to the accuracy thereof. All property information is presented subject to errors, omissions, price changes, changed property conditions, and withdrawal of the property from the market, without notice.