

Hikvision Onboard Security Solution for Taxis

Make every ride safe and smart


Hikvision Onboard Security Solution for Taxis

Make every ride safe and smart



www.hikvision.com
support@hikvision.com



 **Hik-Partner Pro**
Scan and download
the app

Distributor Address

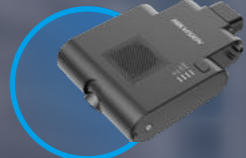
Taxi services

face a myriad of challenges in today's world, from ensuring passenger safety and satisfaction to managing driver compliance and liability. Hikvision's Onboard Security Solution offers a comprehensive yet lightweight answer by employing advanced video security technology to enhance onboard safety, while also incorporating driver assistance to encourage safe driving. Furthermore, it provides centralized management capabilities to improve overall operational efficiency.

Onboard security for both passengers and drivers



Interior Mobile Analog Cameras
for onboard monitoring



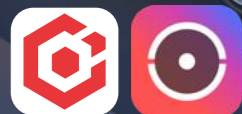
Dash Camera
for intelligent video analysis



DSM Camera
for safer driving



Panic Button
for alarm triggering



Hik-Central Professional & Hik-Connect
for centralized management



Reduce liability risks

- **Dash camera** captures clear video footage in any weather, retaining evidence for post-accident investigation
- **In-vehicle cameras** provide clear evidential footage in cases of disputes between passengers and drivers
- **Six-axis gyroscope sensor** triggers emergency video recording after a collision or severe vibration, providing crucial evidence for investigations



Get support when needed

- **Built-in GPS module** provides real-time tracking of operating taxis on a Google map, and supports history path tracking
- **Manual emergency alarm** triggers video clip marking and remote assistance for unsettled passenger or driver



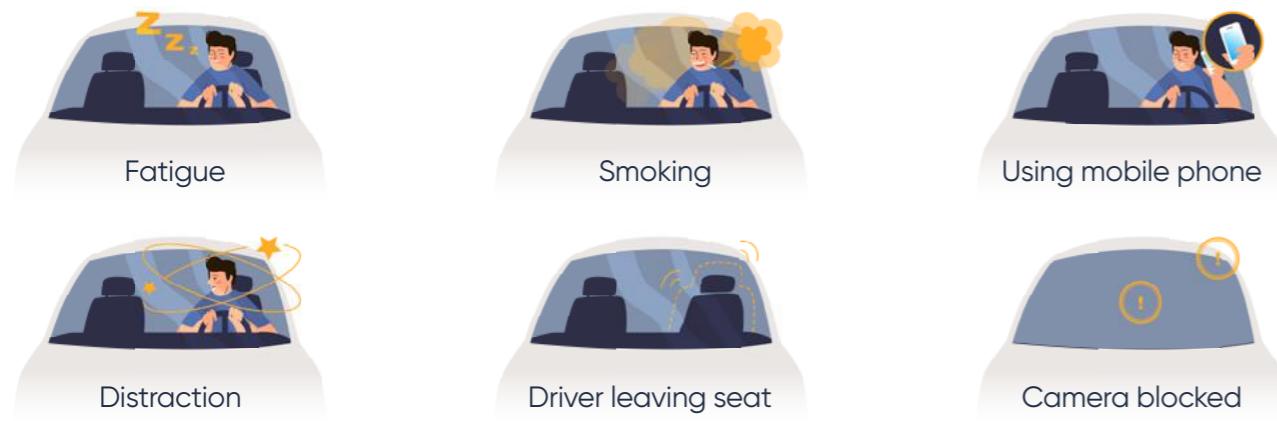
Stable performance under intense heat

Devices can maintain stable performance in temperatures ranging from -20°C to 60°C. In the event of high heat or sunlight, the built-in intelligent algorithm will automatically shut down and power consumption will be reduced, guaranteeing system stability.

Safer driving with the driver assistance

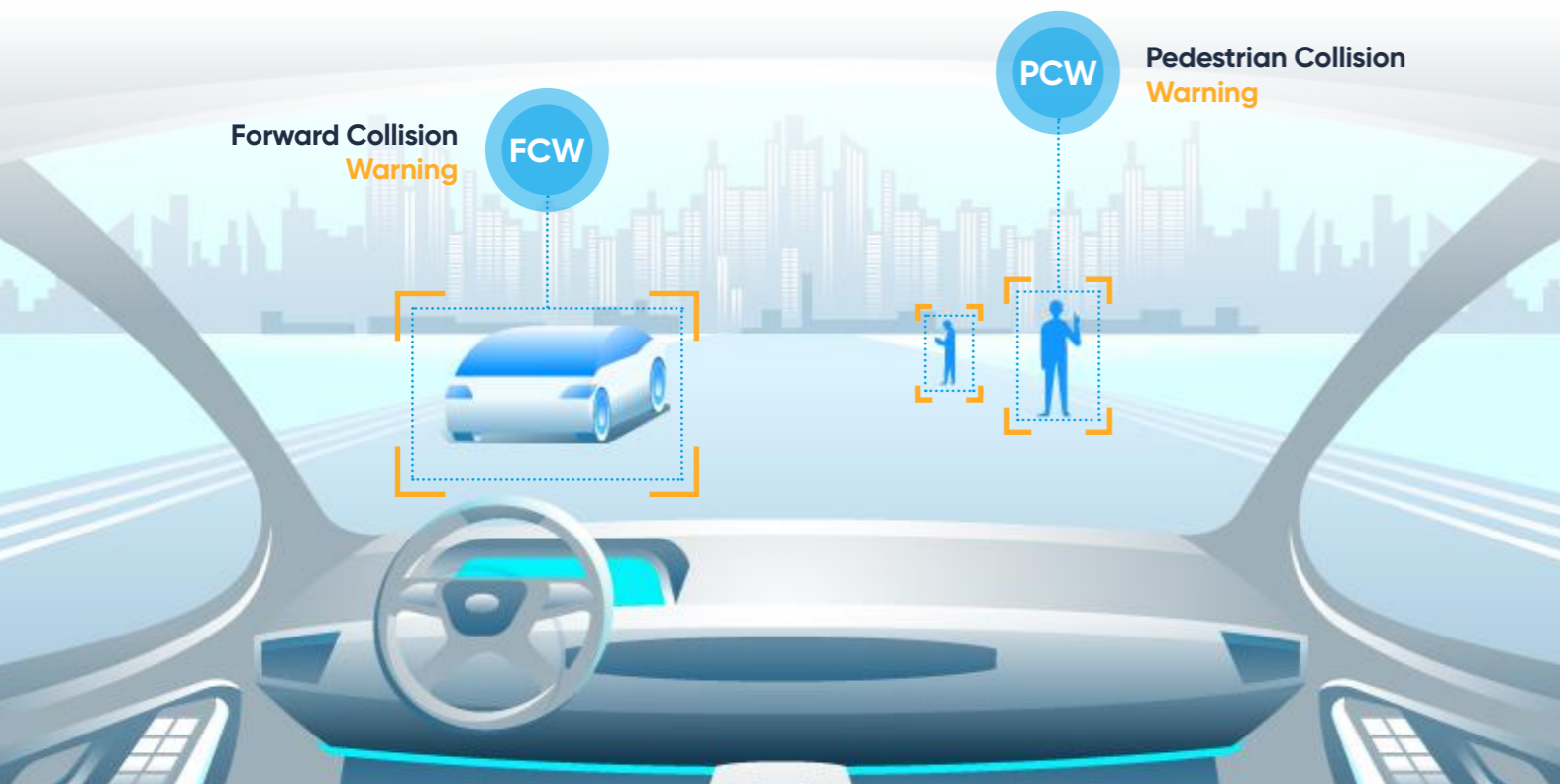
Reduce unsafe driving with the Driver Status Monitor (DSM)

- Alerts are sent to drivers when they exhibit signs of distracted driving, smoking, phone usage, drowsiness, etc.,
- Alarm triggers sent to the operation center for record keeping and driver evaluation purposes



Better visibility and driving event assessment with the Advanced Driver Assistance System (ADAS)

- Detect complex situations in front of the car, allowing the driver to quickly assess driving events
- Alarm triggered in real-time, providing early warning to reduce driving risks



Operational efficiency through centralized management



Remote vehicle management

- Efficiently manage the fleet by dispatching vehicles from a unified platform
- Effortlessly monitor vehicles from any location and at any time using the HCP (HikCentral Professional) platform accessible through a web portal or mobile application
- Collect both video and audio evidence with on-board cameras and audio perception technology
- Manage audio and video data in real-time, and easily preview, playback, and store valid evidence
- Efficiently maintain the system with batch firmware upgrades
- Ensure effective transportation with GPS tracking, real-time positioning and electronic fencing



Streamline taxi services

- Seamlessly integrate driver details with taxis for enhanced operations
- Analyze vehicle data and traffic statistics for optimized transport and scheduling capabilities
- Real-time load rate calculation ensures efficient passenger management
- Access detailed historical reports for valuable operational insights

Product highlights



AI-powered video analysis



Light-weight design



360 degree rotatable lens



High temperature resistant



GPS Filtering



Aviation Gyroscope



Easy installation



Multiple application scenarios

Certifications



Product specifications

AE-VC143T-ITS



- Adopts progressive scan CMOS to prevent motion image aliasing
- Supports HD coaxial output with the resolution 720P
- Min. illumination: 0.1 Lux @[F1.2, AGC ON], 0 Lux with IR
- Supports auto day & night switch
- Adopts auto electronic shutter
- Support auto gain control and self-adaption to light
- Shock-proof design

AE-DI2032-G40



- Up to 1080P resolution
- Supports 3-ch video, 1-ch audio (CH 1)
- Supports GPS and speed overlay on picture
- Supports built-in Wi-Fi & 4G module
- Supports preview, playback and editing parameters via APP
- Supports DSM & ADAS function
- Easy installation and operation
- Supports HCC and HCP Platforms

AE-VC154T-IT



- Adopts progressive scan CMOS
- Up to 720P resolution
- 0.1 lux @ (F1.2, AGC ON), 0 lux with IR
- Adopts shock-proof design and 4-pin din connector

HikCentral Professional On-Board Monitoring



- Includes 10 free onboarding devices, with scalability for up to 5000 units
- Offers 25 driving event types and 3 years of event storage
- Provides 8 statistics and reports

HikCentral On-Board Monitoring Base:

HikCentral-P-MS-10Unit/Base/Promo
HikCentral-P-MS-1Unit (Allows addition of 1 device)

Hik-Connect On-Board Monitoring



- Provides 10 free onboarding devices with scalability to unlimited devices
- Offers 30 driving event types
- Includes 8 statistics and reports categorized by Vehicle or Driver
- Offers free cloud backup of event-related 7-second video clips for 6 months

Hik-Connect On-Board Monitoring Base:

HC-T&HCC-Vehicle/1Device/1M (Allows addition of 1 device per month)
HC-T&HCC-Vehicle/1Device/1Y (Allows addition of 1 device per year)