

InertSearch™ for LC

Inertsil® Applications

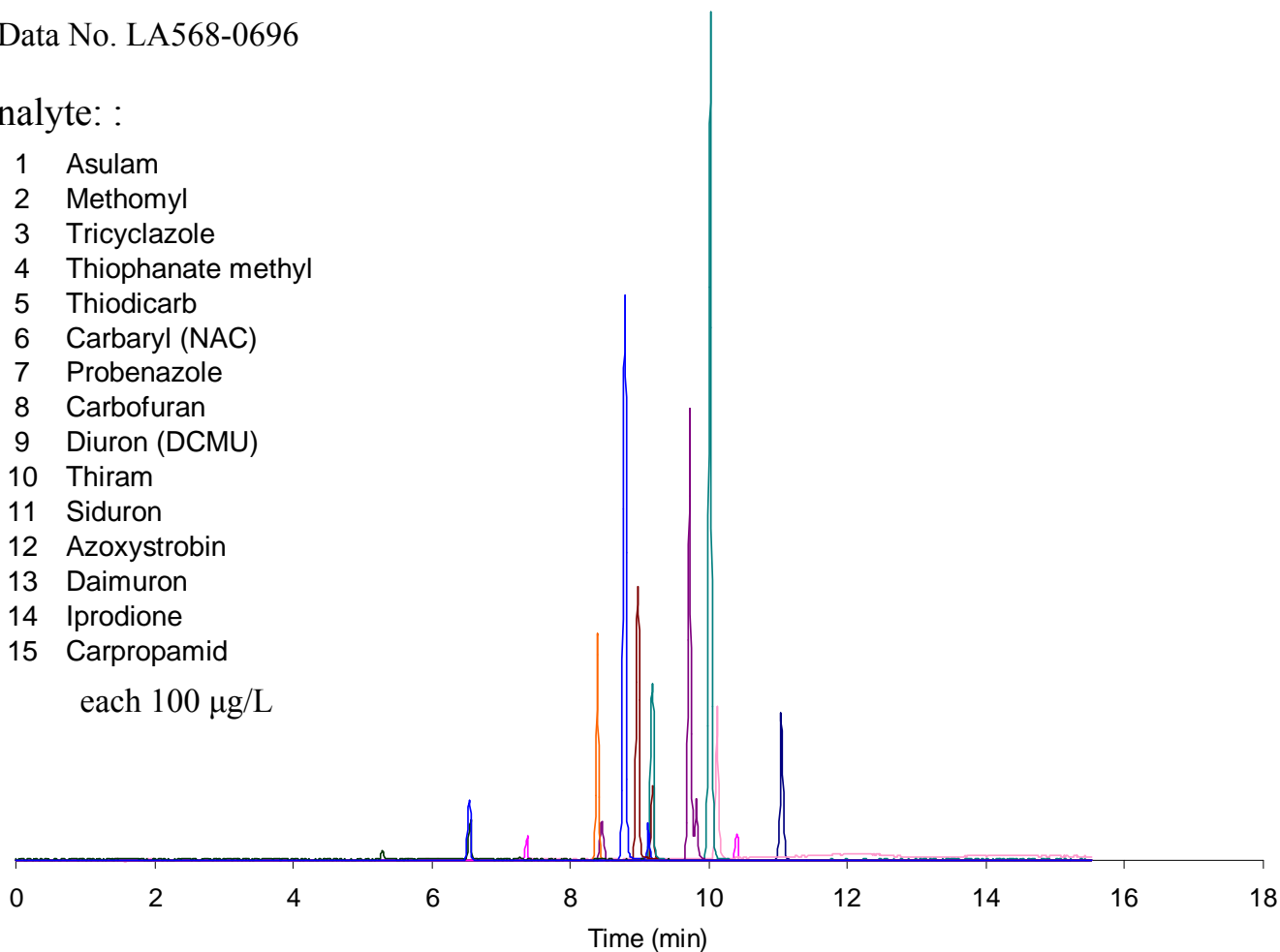
Analysis of 15 kinds of Pesticides

Data No. LA568-0696

Analyte: :

- 1 Asulam
- 2 Methomyl
- 3 Tricyclazole
- 4 Thiophanate methyl
- 5 Thiodicarb
- 6 Carbaryl (NAC)
- 7 Probenazole
- 8 Carbofuran
- 9 Diuron (DCMU)
- 10 Thiram
- 11 Siduron
- 12 Azoxystrobin
- 13 Daimuron
- 14 Iprodione
- 15 Carpropamid

each 100 µg/L



Conditions

System : Symbiosis Pharma system
Column : Inertsil ODS-SP (3 µm, 150 x 2.1 mm I.D.)
Column Cat. No. : 5020-02715
Eluent : A) CH₃CN
B) 0.1% CH₃COOH
A/B = 0/100 - 10 min. - 100/0 - 5 min. hold, v/v
Flow Rate : 0.2 mL/min
Col. Temp. : 40 °C
Detection : LC/MS/MS (ESI, Positive., MRM, Q1/Q3 conditions were in Supplemental Data)
Injection Vol. : 10 µL
Analyte : Pesticides

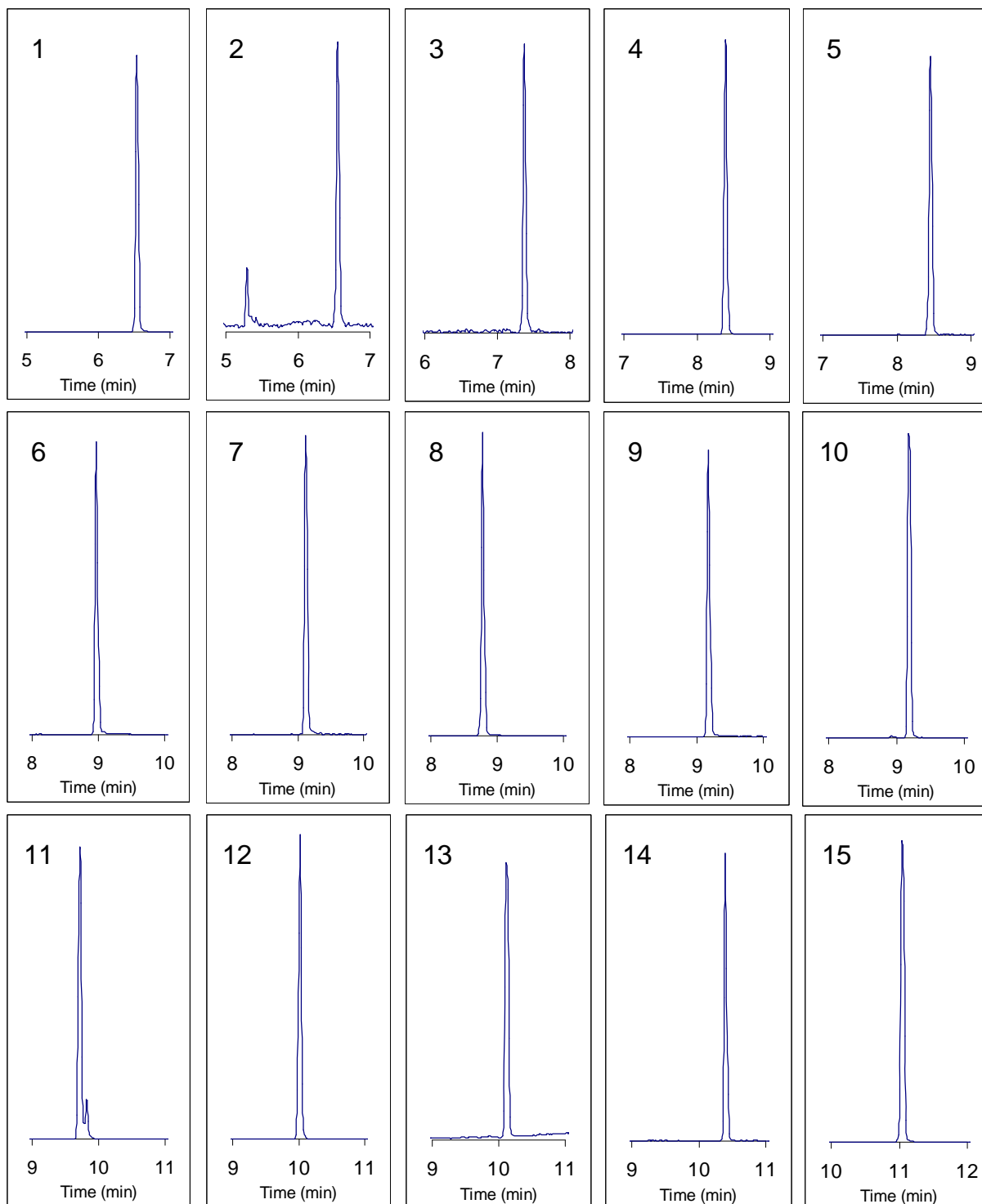
InertSearch™ for LC

Inertsil® Applications

Analysis of 15 kinds of Pesticides

Data No. LA568-0696

Supplemental Data



No.	Compound	R.T.	Q1	Q3	No.	Compound	R.T.	Q1	Q3
1	Asulam	6.5	231.3	156.1	9	Diuron (DCMU)	9.2	233.2	72.1
2	Methomyl	6.6	163.2	121.8	10	Thiram	9.2	241.2	120.0
3	Tricyclazole	7.4	191.2	136.1	11	Siduron	9.7	233.3	137.0
4	Thiophanate methyl	8.4	343.2	151.1	12	Azoxystrobin	10.0	404.3	372.3
5	Thiodicarb	8.5	355.2	163.1	13	Daimuron	10.1	269.4	151.3
6	Carbaryl (NAC)	9.0	202.2	145.2	14	Iprodione	10.4	330.2	245.1
7	Probenazole	9.2	224.2	41.1	15	Carpropamid	11.1	334.2	139.2
8	Carbofuran	8.8	222.3	165.2					