

GET SMART

THE CONNECTED SHOP



**FINGERPRINT LOCK SMART PADLOCK
USER MANUAL**

Welcome to the Fingerprint Lock Smart Padlock User Manual. Your easy, step-by-step guide to set up and connect your Fingerprint Lock Smart Padlock. The device is designed to be easy-to-use and to replace all average padlocks with this modern one.



SUMMARY

I. Device Set Up



- 1. Set-up Guide
 - a) Set-up Video

II. Device Functions



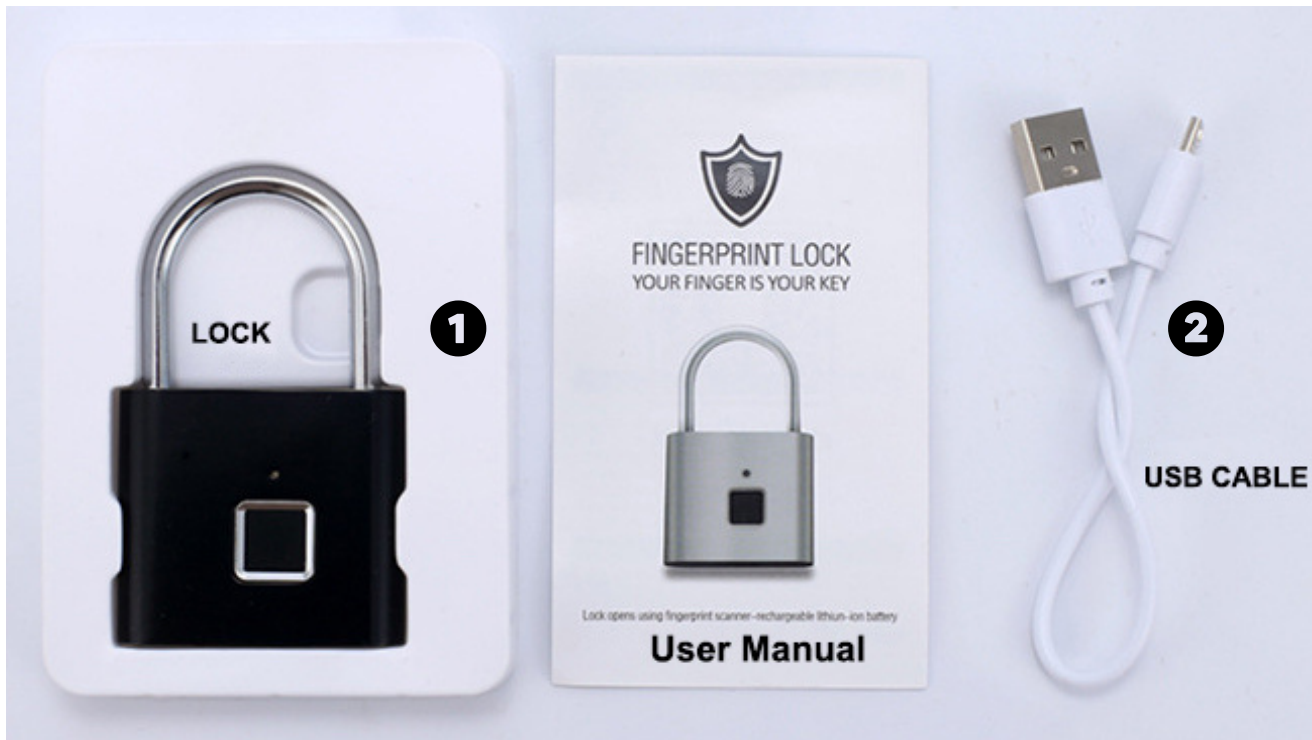
- 2. Remote
 - a) Unlock Device

III. Mobile App Connection



- 3. Registering on the Mobile App
 - a) Downloading the Mobile App
 - b) Adding Devices

PACKAGING DETAILS



1 Smart Padlock

2 USB Charger

STEP-BY-STEP SET-UP GUIDE



1. SET UP



- a. Remove all the items from its original box and charge the device for a couple of hours first before using it
- b. Proceed to accessing the video below on how to set up the device by adding a fingerprint
- c. To input a fingerprint, hold and press the fingerprint sensor for a couple of seconds or until the green light flashes
- d. Record the same fingerprint 10 times with both blue and green lights flashing. Repeat the same process when adding another fingerprint
- e. To delete a fingerprint, hold and press the fingerprint sensor for at least 10 seconds
- f. Red light will flash when the device is deleting a fingerprint and it will turn to a green light when the process was done successfully

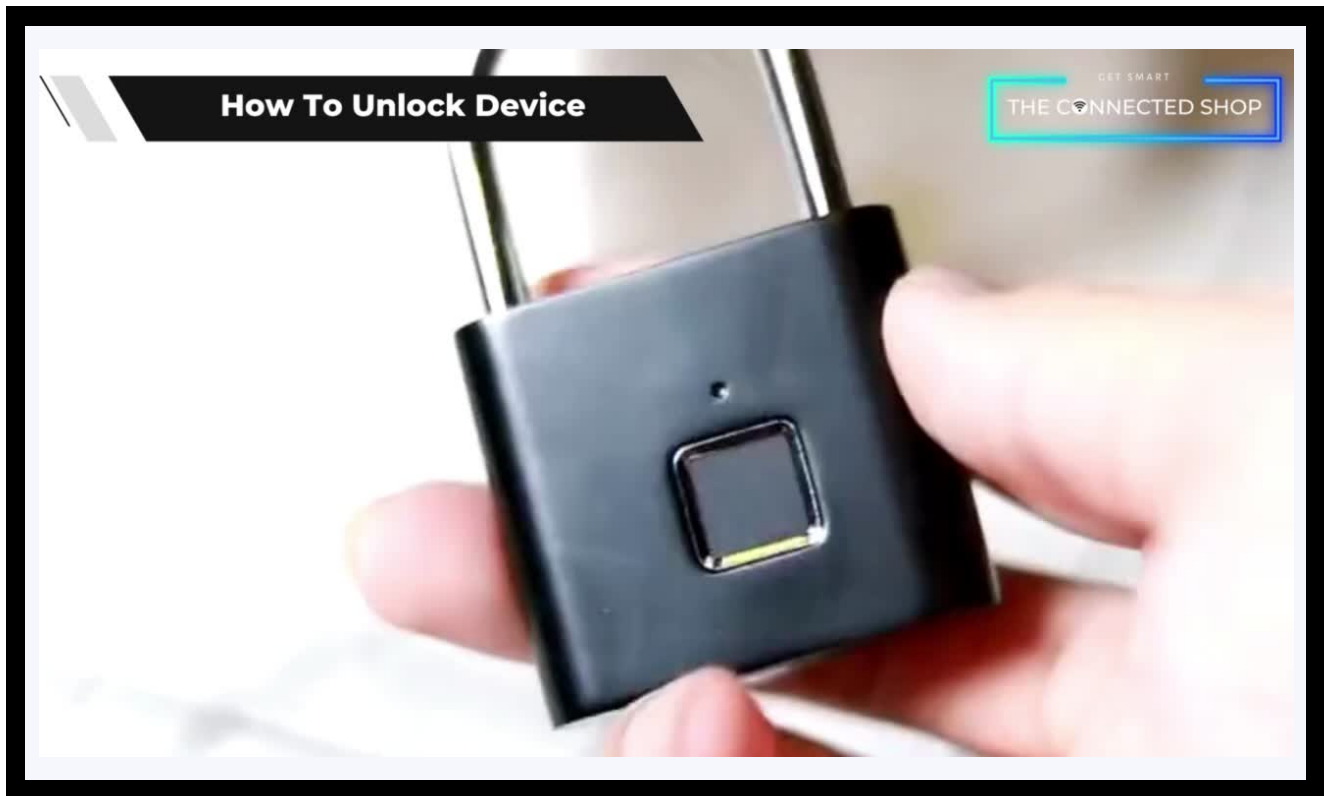


2. INITIAL STATE OF YOUR DEVICE



a) Unlock Device

- To unlock the padlock, simply touch the sensor with a registered or authorized fingerprint
- The light should blink once the device unlocks

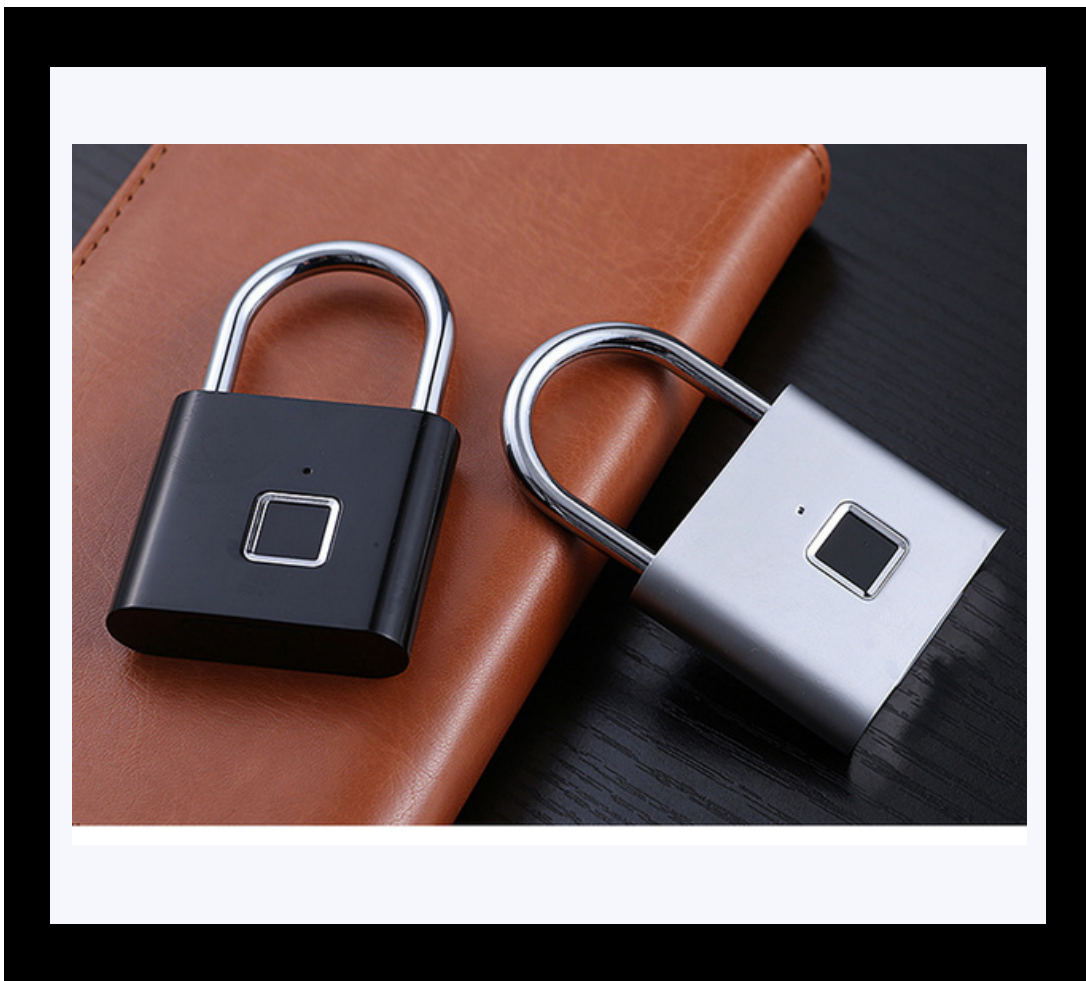


Congratulations!

You have successfully set up your very own Fingerprint Lock Smart Padlock.

Thank you for being a valued customer of The Connected Shop.

www.theconnectedshop.com





THE CONNECTED SHOP