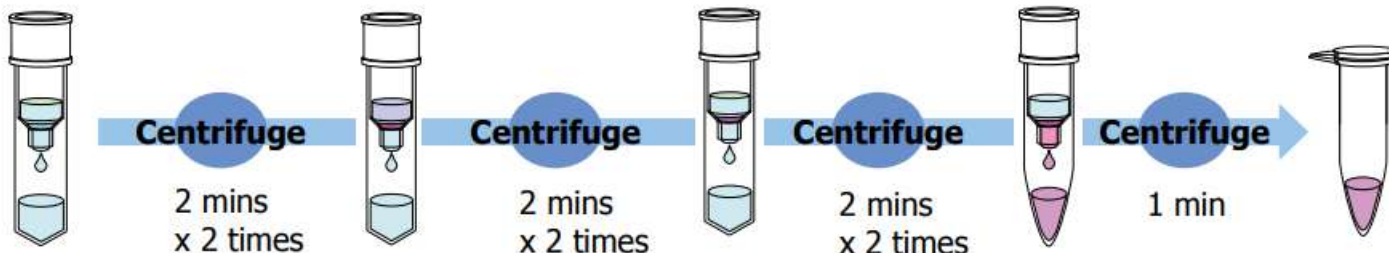


Sample Preparation

50 μ L sample solution :
Add 10 μ L serum sample
and 40 μ L water

Centrifugation
Speed : 5,200 x g



1. Conditioning

Add 20 μ L 0.1 % TFA
in 80 % acetonitrile
↓ Centrifuge
Add 20 μ L 0.1 % TFA
in 50 % acetonitrile

2. Adsorption

Add 50 μ L sample
solution
↓ Centrifuge
Collect the eluate
from the recovery
tube & attach a new
recovery tube. Then,
apply the eluate to
MonoSpin TiO again.

3. Rinsing

Add 20 μ L 0.1 %
TFA in 50 %
acetonitrile
↓ Centrifuge
Add 20 μ L 0.1 %
TFA in 50 %
acetonitrile

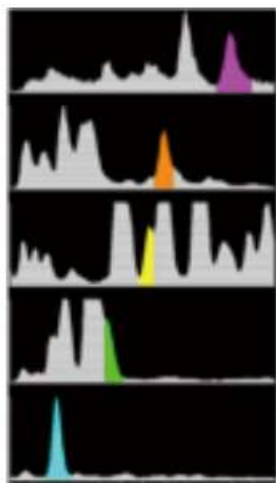
4. Elution

Add 50 μ L
2 % ammonia
aqueous
solution

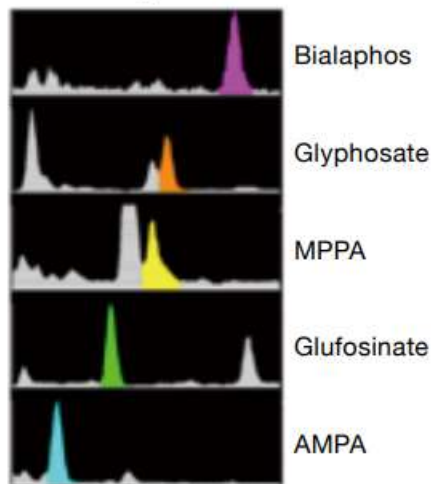
Purified Sample

Derivatize the
purified sample
with N-Acetyl-O-
methyl and then
inject to LC/MS

Without MonoSpin PBA



Purification using MonoSpin TiO



Conditions

Column : ODS (150 mm x 2.1 mm I.D.)
Eluent : CH₃OH/20 mM HCO₂NH₄
(pH 3.0) = 15/85
Flow Rate : 200 μ L/min
Injection : 5 μ L
Detection : SIM

Sample : 1. Bialaphos
2. Glyphosate
3. MPPA
4. Glufosinate
5. AMPA
(1 ppm each)

