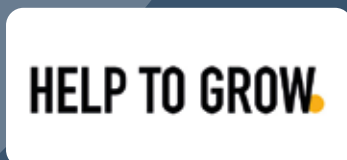




# LANCASHIRE BUSINESS EXP 2023

**EXHIBITOR GUIDE**  
2 FLOORS OF EXHIBITION STANDS  
JOIN THE CONVERSATION **#LBE2023**

# Our Partners



# Welcome to #LBE2023

---

We're delighted to open the doors to the Lancashire Business Expo 2023.

The Shout Expo team are delighted to welcome exhibitors and delegates from businesses across the North West to the Lancashire Business Expo 2023.

According to a new report into the number of new businesses started across the country, Lancashire's entrepreneurs show more 'get up and go' than those from most other areas.

It's a great time to celebrate Lancashire's thriving business community!

Today's exhibitors have used their get up and go to offer a range of innovative exhibition stands. They're eager to talk to you about collaboration opportunities and the potential for helping your business.

Take a look through our list of exhibitors so you can plan your day and make time to visit all the stands that interest you across the two exhibition halls. Many of the exhibitors are running competitions with amazing prizes to be won and goodies to give away, so be sure you don't leave empty-handed!

**Our expo hashtag is #LBE2023.** Use it throughout the day and after the event to connect with exhibitors, delegates and the wider business community. Join the conversation on Shout Expo's Twitter, LinkedIn, Instagram, Facebook and TikTok accounts.

Thank you for being part of this fantastic annual event. We hope you have a very successful and inspiring day.

Regards  
**The Shout Expo Team**



# Exhibit the **right way**

The **right audience**  
and the **perfect opportunity**  
to shout about your business

**550+**  
Exhibitors

**7000+**  
Delegates

**7000+**  
Potential Clients

At Shout Expo, over 150 exhibitors showcase their businesses to around 1800 visitors at each event. That's an impressive reach for a day's work!

Where else do you have the opportunity to meet so many potential clients face-to-face, exchange information and be memorable?

Held annually around the North West, these are the target exhibitions for business owners, professionals, startups and marketeers, keen to connect with other businesses and decision-makers.

With over 7,000 visitors attending year after year, this opportunity to showcase your business in a relaxed, fun environment, shouldn't be missed.

Find out more at [www.shoutexpo.com](http://www.shoutexpo.com)

## Announced Events:

**LIVERPOOL  
CITY REGION  
BUSINESS  
EXP 2023**

9th June 2023  
Exhibition Centre

**CUMBRIA  
BUSINESS  
EXP 2023**

22nd September 2023  
Carlisle Racecourse

**NORTH WEST  
BUSINESS  
EXP 2023**

6th October 2023  
Bolton Stadium



**Helping Lancashire Businesses**



# Boost is helping Lancashire businesses, just like yours

**Are you looking to access funded business support? Talk to Boost; Lancashire's Business Growth Hub**

Boost is here to help Lancashire businesses, whatever the business challenge.



Get in touch with our team on **0800 488 0057** or contact us **online** [\*\*boostbusinesslancashire.co.uk\*\*](https://boostbusinesslancashire.co.uk)



**#HelpingLancashireBusinesses**



# Our Exhibitors

More exhibitors on [page 8](#).

# LANCASHIRE BUSINESS EXP 2023

#LCRE2023

LIVERPOOL CITY REGION BUSINESS EXP  2023

## Register for our next event

FRIDAY 9TH JUNE

Exhibition Centre

9am til 3pm

[www.shoutexpo.com](http://www.shoutexpo.com)



Automate

[www.we-automate.co.uk](http://www.we-automate.co.uk)



Adkirk Law

[www.adkirklaw.co.uk](http://www.adkirklaw.co.uk)



AdSmart from Sky

[www.adsmartfromsky.co.uk](http://www.adsmartfromsky.co.uk)



Advanced Bacterial Sciences

[www.abs.eco](http://www.abs.eco)



Allica

[www.allica.bank](http://www.allica.bank)



Amp EV

[www.ampev.co.uk](http://www.ampev.co.uk)



**Business  
Health Matters**  
A successful business begins with a healthy team



**Business Health Matters**

# WORKPLACE WELLBEING PROGRAMME

*Wellbeing support for Lancashire-based businesses, delivered by local experts.*

*Contact us to see how we can improve your team's physical and mental health so you can reap the benefits of a happier, healthier and more resilient workforce.*



 01772 299838

 [www.businesshealthmatters.org.uk](http://www.businesshealthmatters.org.uk)

 [businesshealthmatters@activelancashire.org.uk](mailto:businesshealthmatters@activelancashire.org.uk)



**Innovate  
UK**



**European Union**  
European  
Social Fund





# Our Exhibitors

More exhibitors on [page 12](#).

# LANCASHIRE BUSINESS EXP 2023



**Baker Hardman Solicitors**

@bakerhardman  
www.bakerhardman.co.uk



**Baltic Apprenticeships**

www.baltic apprenticeships.com



**Barcode Logistics**

www.bcl-web.co.uk



**Partner**

**Bensons Vending**

www.bensonsvending.co.uk



**Bigtank Productions**

@realbigtank  
www.bigtank.co.uk



**Birkdale Insurance**

www.birkdaleinsurancegroup.co.uk



**Blackburn College**

@bbcollege  
www.blackburn.ac.uk



**BNI**

@bni\_official\_pg  
www.bni.com



**Partner**

**Boost Lancashire**

www.boostbusiness lancashire.co.uk





# Partnerships for sustained success

Join us with our strong reputation for applied business research and consultancy, entrepreneurship, innovation, training and Degree Apprenticeships. By working with us you will have access to the expertise of academics, research staff, students and graduates to help your business develop.



[uclan.ac.uk/business](http://uclan.ac.uk/business)  
01772 895500  
[business@uclan.ac.uk](mailto:business@uclan.ac.uk)  
[@UCLanBusiness](https://twitter.com/UCLanBusiness)

University of  
Central  
Lancashire  
UCLan



IT'S **TIME** TO DO  
**BUSINESS**  
IN SOUTH RIBBLE

to connect, to recruit, to access support and to grow your business.

**We offer a range of business help, free of charge:**

- Tailored searches for commercial sites and premises in central Lancashire
- Assistance to access business support programmes, loans and funding
- Skills Factory recruitment & training support to develop your skilled workforce
- Help to deliver social value outcomes

Come and chat to us today at our stand today or feel free to contact us on:

**[info@businessinsouthribble.com](mailto:info@businessinsouthribble.com)**

**[www.businessinsouthribble.com](http://www.businessinsouthribble.com)**

**SOUTH RIBBLE**



# Want to upskill

your staff in digital technology?

Computer Fundamentals  
& Networking

Website Development

Databases

Productivity tools

Cyber Security

Runshaw offers:

FREE SKILLS AUDIT

AFFORDABLE COURSES

BESPOKE PACKAGES

MINIMAL TIME COMMITMENT  
NO EXPERIENCE REQUIRED

**contact**/us

digital/**runshaw**  
CENTRE OF DIGITAL EXCELLENCE

[digital@runshaw.ac.uk](mailto:digital@runshaw.ac.uk)

RUNSHAW  
COLLEGE



# Our Exhibitors

More exhibitors on [page 14](#).

# LANCASHIRE BUSINESS EXP 2023



## Bowker

Partner

Bowker Preston

[www.bowkerprestonbmw.co.uk](http://www.bowkerprestonbmw.co.uk)



Box Box Solutions

[www.boxboxsolutions.com](http://www.boxboxsolutions.com)



Brian House

[www.brianhouse.org.uk](http://www.brianhouse.org.uk)



Brindle Distillery

[@cuckoogin](https://www.brindledistillery.co.uk)  
[www.brindledistillery.co.uk](http://www.brindledistillery.co.uk)



Brysdales

[www.brysdales.co.uk](http://www.brysdales.co.uk)



Burnley College

[www.burnley.ac.uk](http://www.burnley.ac.uk)



Burnley Football Club

[www.burnleyfootballclub.com](http://www.burnleyfootballclub.com)



Business Connect Publishing

[www.businessconnectmagazine.co.uk](http://www.businessconnectmagazine.co.uk)



Partner

BusinessGiftUK.com

[@businessgiftuk](https://www.businessgiftuk.com)  
[www.businessgiftuk.com](http://www.businessgiftuk.com)





PRESTON  
- A GROWING  
VIBRANT  
CITY WITH A  
THRIVING AND  
FAIR ECONOMY



invest  
**PRESTON**

INVESTMENT // DEVELOPMENT // SUPPORT



All enquiries:  
**business@preston.gov.uk**



[www.investprestoncity.com](http://www.investprestoncity.com)



# Our Exhibitors

More exhibitors on [page 16](#).

# LANCASHIRE BUSINESS EXP 2023



Partner

Business Health Matters

[www.businesshealthmatters.org.uk](http://www.businesshealthmatters.org.uk)



"Have you caught the **BUG** yet?"

Partner

Business Utilities Group

[www.businessutilitiesgroup.co.uk](http://www.businessutilitiesgroup.co.uk)



Choose Chorley for Business

[www.chorleybusinesssupport.co.uk](http://www.chorleybusinesssupport.co.uk)



Cloud4 Computers

[www.cloud4computers.co.uk](http://www.cloud4computers.co.uk)



Colne BID

[@visitcolne](https://www.cometocolne.com)  
[www.cometocolne.com](http://www.cometocolne.com)



Convene IT

[www.convizeit.co.uk](http://www.convizeit.co.uk)



Copy Print Services

[www.copyprintservices.co.uk](http://www.copyprintservices.co.uk)



Cotton Court Services

[www.cottoncourt.co.uk](http://www.cottoncourt.co.uk)



Craig Broadbent Wealth Management

[partnership.sjp.co.uk/partner/craigbroadbent](http://partnership.sjp.co.uk/partner/craigbroadbent)



IWG

# GLOBAL LEADER. WORLD-CLASS RETURNS



## The world of work is changing, and the demand for hybrid working is growing at an unprecedented rate.

IWG is the world's largest provider of flexible workspaces, with more than 3,500 locations in over 120 countries, and we can help you capitalise on this new growth opportunity.

As a building owner, it doesn't matter whether you own a floor or multiple buildings, we can help unlock a quick route to higher income.

We'll help you maximise returns with minimum effort by providing you with all the operational expertise you need. This includes a world-leading digital platform, and marketing & sales support.

Start generating world-class returns today. Become a partner with the world leader in flexible workspaces.



To find out more, visit  
[iwgplc.com/develop-a-location](https://iwgplc.com/develop-a-location)

or email  
[development@iwgplc.com](mailto:development@iwgplc.com)

**IWG** The Global  
Workspace  
Leader

Regus SPACES. HO Signature





# Our Exhibitors

More exhibitors on [page 20](#).

# LANCASHIRE BUSINESS EXP 2023



Crow Wood Hotel & Spa Resort

[www.crowwoodhotel.com](http://www.crowwoodhotel.com)



Danbro

[www.danbrobusiness.co.uk](http://www.danbrobusiness.co.uk)



DanceSyndrome

[@dancesyndromeuk](#)  
[www.dancesyndrome.co.uk](http://www.dancesyndrome.co.uk)



Department for International Trade

Department for International Trade

[www.gov.uk/government/organisations/department-for-international-trade](http://www.gov.uk/government/organisations/department-for-international-trade)



Digitav

[@digitav](#)  
[www.digitav.com](http://www.digitav.com)



East Lancashire Chamber of Commerce

[www.chamberelancs.co.uk](http://www.chamberelancs.co.uk)



Accounting Made Easy

[www.eccounting.uk](http://www.eccounting.uk)



EKM

[www.ekm.com](http://www.ekm.com)



Elis UK

[www.uk.elis.com](http://www.uk.elis.com)



mediavillage

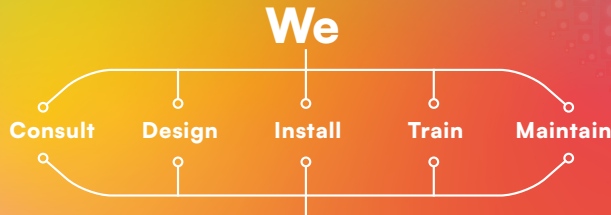
# Born **print,** grown to think *beyond.*

BRAND	DESIGN	PRINT	WEB
VIDEO	MARKETING	PHOTOGRAPHY	
SIGNAGE	AUDIO VISUAL	PODCASTS	

01254 300000 | info@media-village.co.uk  
www.media-village.co.uk | f @ in t

AV | mediavillage  
Audio Visual Solutions

# Experience the beyond.



Digital Signage Software & Hardware to all Sectors Nationwide



Any **screen.** Anywhere. Any place.

01254 300008 | experience@mvav.co.uk | mvav.co.uk | f @ in

# LANCASHIRE**B**



**PROUD MEDIA PARTNER  
OF THE LANCASHIRE  
BUSINESS EXPO**

**LANCASHIREBUSINESSVIEW.CO.UK**

# BUSINESSVIEW

# LET US SHOUT ABOUT YOUR BUSINESS!

What's your story? We'd love to know, and share it with the Lancashire business community. For an informal chat about raising your profile please contact Stephen Bolton on **07966 090175** or [stephen@lancashirebusinessview.co.uk](mailto:stephen@lancashirebusinessview.co.uk)

**50,000**

readers

**9,000**

email subscribers

**52,000**

social media  
followers

**40,000**

monthly unique  
website visitors

**32,000**

website page views  
per month

CONNECTING THE COUNTY SINCE 2005



# Our Exhibitors

More exhibitors on [page 22](#).

# LANCASHIRE BUSINESS EXP 2023



**Ellison Printing**

Ellison Printing

@ellisonprinting  
www.ellisonprinting.co.uk



EnergyAce

@energyaceuk  
www.energyace.co.uk



Farleys Solicitors

@farleyslaw  
www.farleys.com



FM Outsource

@fmoutsource  
www.fmoutsource.com



Focus On Testing

www.focusontesting.co.uk



Forward Thinking

www.forwardthinking.ltd



FWP

@fwpgroup  
www.fwpgroup.co.uk



Gainsborough Flooring

www.gainsborough flooring.co.uk



Greenarc Vehicles

www.greenarc vehicles.co.uk





# THE IMPORTANCE OF YOUR PEOPLE

Take care of your employees and they will take care of your business!

Santé Group are experts in Employee Benefits and will structure your company wellbeing strategy to tackle the challenges in your workplace.

Whether you're a start-up, expanding, or an established business, we can tailor packages and offer a suite of benefits that will help mitigate risk and help manage the wellbeing of your people.

## SERVICES WE OFFER:



Health Insurance



Health Cash Plans



Dental Insurance



Virtual GP Service



Death in Service / Group Life Assurance



Shareholder & Key Person Protection



Employee Assistance Programme (EAP)



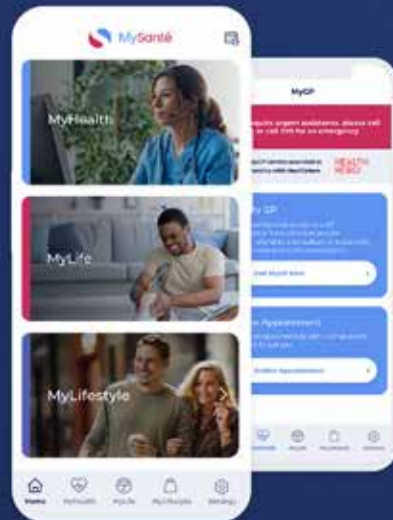
Retail and Lifestyle discounts platform

## MYSANTÉ APP

The answer to all your employees needs!

My Santé is an affordable and cost-effective solution for Employers. The App offers access to a wide range of services to help support employees through most of life's eventualities. Priced at only £39 per annum, per employee and includes access to :-

- **EAP**  
(Including 6 sessions of structured face to face counselling)
- **Virtual GP service**
- **Legal & Debt advice helpline**
- **Cyber Security**  
Protecting your digital profile
- **Lifestyle Savings**  
With access to a huge range of UK major retailers, supermarkets, travel and much more
- **My Fitness & Wellbeing**  
Digital health buddy including workouts, recipes and mindfulness
- **Gym Discounts**



For more info contact Luke Nugent 01772 585085 luke@nugentsante.com



Nugent Santé Ltd is authorised and regulated by the Financial Conduct Authority. Financial Services. Register number 770038. Nugent Santé Ltd is registered in England & Wales, company registration number 09809007. Santé Life Ltd is authorised and regulated by the Financial Conduct Authority. Financial Services. Register number 527705. Santé Life Ltd is registered in England & Wales number 12367407.



# Our Exhibitors

More exhibitors on [page 24](#).

# LANCASHIRE BUSINESS EXP 2023

**HELP TO GROW.**  
MANAGEMENT COURSE

Partner

Help to Grow

[www.helptogrow.campaign.gov.uk](http://www.helptogrow.campaign.gov.uk)

**hrx**  
PEOPLE

HRX People

[@hrxpeople](https://www.hrxpeople.com)  
[www.hrxpeople.com](http://www.hrxpeople.com)

**H X**   
HX CAR PARK MANAGEMENT LTD

HX Car Park Management

[www.hx-pcn.com](http://www.hx-pcn.com)

  
**igloo**

Igloo Investment Management

[www.igloo.regeneration.co.uk](http://www.igloo.regeneration.co.uk)

**i m**  
**s m**  
iso specialists™

IMSM

[www.IMSM.com](http://www.IMSM.com)

**iNNOVATE**   
Lancashire

Partner

Innovate Lancashire

[www.innovate.lancashire.co.uk](http://www.innovate.lancashire.co.uk)

**IWG**  
International Workplace Group

Regus • SPACES • HO • Signature

Partner

IWG

[@iwgplc\\_](https://www.iwgplc.com)  
[www.iwgplc.com](http://www.iwgplc.com)

**jmg**lending  
Insurance Brokers

JM Glendinning Insurance Brokers

[@jmgldinning](https://www.jmginsurance.co.uk)  
[www.jmginsurance.co.uk](http://www.jmginsurance.co.uk)

**KCS**  
SECURITY

Key Control Services

[www.keycontrolservices.co.uk](http://www.keycontrolservices.co.uk)





In today's world where many things have changed, a business needs support in adapting and ultimately innovating.

Here in Lancashire, we will support you with this, introducing you to others with whom you can collaborate; be that other businesses, universities, support programs or external funding opportunities.

## What Innovate Lancashire Does

We want to showcase what it is you do, how you work with others and what funding you have secured.

Promote your solutions to a wider audience and ensure that Lancashire is seen as an Innovation Hub.

Form an Innovation Network here in Lancashire – bringing together those who support each other to take a process or product to market. A network that works with you to form co-working with other businesses or support partners.

## Look out for our future events.

We have the **Lancashire Innovation Challenge 2023** with entries open soon with final on **14th June 2023 at Shout Offices** – more information on our stand.

**Lancashire Innovation Festival 2023 #LANIF23** is on **Friday 13 October** this year at AMRC – watch the website for more details.

## Who We Work With





# Our Exhibitors

More exhibitors on [page 28](#).

# LANCASHIRE BUSINESS EXP 2023



[www.kingsleyassetfinance.co.uk](http://www.kingsleyassetfinance.co.uk)



Partner

Lancashire and South Cumbria Health and Care Partnership

[www.lancashireandsouthcumbria.icb.nhs.uk](http://www.lancashireandsouthcumbria.icb.nhs.uk)



Partner

Lancashire Business View

[www.lancashirebusinessview.co.uk](http://www.lancashirebusinessview.co.uk)



Lancashire Fire and Rescue Service

[@lancshirefrs](https://www.lancsfireandrescue.org.uk)  
[www.lancsfireandrescue.org.uk](http://www.lancsfireandrescue.org.uk)



Partner

Lancashire Teaching Hospitals Charity

[www.lthcharity.org.uk](http://www.lthcharity.org.uk)



Lancashire WBL Executive Forum

[@lancsforum](https://www.lancsforum.co.uk)  
[www.lancsforum.co.uk](http://www.lancsforum.co.uk)



Partner

Lancs Skills Hub

[@lancskillshub](https://www.lancshireskillshub.co.uk)  
[www.lancshireskillshub.co.uk](http://www.lancshireskillshub.co.uk)



Latest Business Offers

[www.latestbusinessoffers.com](http://www.latestbusinessoffers.com)



Lee Distribution

[www.leedistribution.com](http://www.leedistribution.com)



# Make Your Business Memorable



2023/24

and enter our competition  
at the show

Talk To Our Experienced Team About Our Full Range  
Of Promotional Products.

Call: 01772 429 111 or  
Email: [info@businessgiftuk.com](mailto:info@businessgiftuk.com)



# Benson's

[WWW.BENSONSVENDING.CO.UK](http://WWW.BENSONSVENDING.CO.UK)

## PROVIDING YOUR BUSINESS WITH THE PERFECT VENDING SOLUTIONS

- Supplying Businesses with vending solutions for over 40 years
- Wide choice of machines available
- Your Company Graphics on any machine
- National coverage via our associated members
- Cashless payment systems as standard



### WHY CHOOSE CRANE?

Experience - Over 80 years of vending experience

Crane Merchandising Systems is the leading global manufacturer of innovative solutions for vending machines, cashless systems, software and wireless communications.

Crane Merchandising Systems provides a top quality and complete product portfolio- freestanding coffee machines, table top coffee machines, snacks vending machines, cold drinks vending machines and food vending machines.



**FOR MORE INFORMATION PLEASE CALL PETER RYAN ON 07976632864 OR EMAIL [peter.ryan@bensonsvending.co.uk](mailto:peter.ryan@bensonsvending.co.uk)**

# HELP TO GROW.

MANAGEMENT COURSE

BOOST YOUR LEADERSHIP  
SKILLS AND BUSINESS  
PERFORMANCE FOR ONLY £750

IT COULD BE THE  
BEST INVESTMENT  
YOU EVER MAKE

The Help to Grow: Management Course is a 90% government-funded management and leadership training course designed specifically for leaders of small and medium-sized businesses.

Delivered by more than 50 world-class business schools across the UK, it includes online and face-to-face sessions, 10 hours of 1 to 1 mentoring, peer networking and development of a Growth Action Plan.

[smallbusinesscharter.org/help-to-grow-management](https://smallbusinesscharter.org/help-to-grow-management)



HM Government



SMALL  
BUSINESS  
CHARTER



Help to Grow



# Our Exhibitors

More exhibitors on [page 30](#).

# LANCASHIRE BUSINESS EXP 2023



LH Recruitment

[www.lh-recruitment.co.uk](http://www.lh-recruitment.co.uk)



Marimosa

[@marimosadigital](https://twitter.com/marimosadigital)  
[www.marimosa.com](http://www.marimosa.com)



Partner

Media Village & Media Village AV

[www.media-village.co.uk](http://www.media-village.co.uk)



MJH Accountants

[www.mjh.accountants](http://www.mjh.accountants)



Myerscough College

[www.myerscough.ac.uk](http://www.myerscough.ac.uk)



Net Hub

[@mynethub](https://twitter.com/mynethub)  
[www.mynethub.com](http://www.mynethub.com)



NetDec Technology Solutions

[@netdec](https://twitter.com/netdec)  
[www.netdec.com](http://www.netdec.com)



New Direction Consulting

[www.ndculture.com](http://www.ndculture.com)



Nybble

[www.nybble.co.uk](http://www.nybble.co.uk)





**Lancashire and South Cumbria**  
Health and Care Partnership

**Careers**  
in health and social care

You can find out more by visiting  
[www.nhscareersnw.co.uk](http://www.nhscareersnw.co.uk)



## Discover your career in Health & Care

Our Careers and Engagement Team work across the Lancashire and South Cumbria region to provide a wealth of opportunities for all to be inspired and supported into their dream career working in the NHS and Care.

Our Careers and Engagement team is a network of friendly and knowledgeable professionals who develop events, projects and programmes to support the future workforce. Working with schools, colleges, universities, healthcare partners and other employers, our common aim is to help people of all ages access information and experience through our projects and hub services.

We are continuously developing an engaging range of experiences and opportunities across the Lancashire and South Cumbria region. We want to help you find the career of your choice within the NHS and Care.



Apprenticeships

- Apprenticeship Pathways
- Clinical and Non-clinical
- Features and Benefits



Placements

- Work Experience
- College/T Level Placements
- Internships and Traineeships



Programmes

- Employability Opportunities
- Employability Support
- Resources and Success Stories
- Kickstart opportunities can be found in vacancies



Events

- Apprenticeships
- Interactive Careers Sessions with professionals
- Recruitment

### Did you know we offer Free E-learning?

Aspire E-Learning is our new online learning tool which forms part of our NHS Careers website. It consists of a range of interactive e-Learning courses, free of charge which provide Students with certification upon completion. The courses will include exciting Podcasts and link into various resources and events on our website. Students can explore a variety of subjects including Apprenticeships, Confidence Building, T-Level information, Boosting Employability, Health & Social Care roles, Introduction into Primary Care and more. Suitable for all age ranges, Aspire will support Student Career aspirations and interests by providing interactive ways of gaining knowledge and developing skills required for a career in Healthcare. Students are able to work at their own pace and choose which topics to cover based on their interests and goals.







# Our Exhibitors

More exhibitors on [page 32](#).

# LANCASHIRE BUSINESS EXP 2023



No Fuss IT

[www.nofussit.co.uk](http://www.nofussit.co.uk)

**NORTH OF TYNE**  
~~~~~  
**COMBINED AUTHORITY**

North Tyneside Council

[www.northoftyne-ca.gov.uk](http://www.northoftyne-ca.gov.uk)



Partner

Nugent Sante

[@nugent\\_sante](https://twitter.com/nugent_sante)  
[www.nugentsante.com](http://www.nugentsante.com)



Palmer Publicity Services

[www.palmerpublicity.co.uk](http://www.palmerpublicity.co.uk)



Plan it Tax

[www.planittax.co.uk](http://www.planittax.co.uk)



**PORSCHE**  
**Porsche Centre Preston**

Partner

Porsche Centre Preston

[www.bowkermotorgroup.co.uk](http://www.bowkermotorgroup.co.uk)



Preston Caribbean Carnival

[@carnivalpreston](https://twitter.com/carnivalpreston)  
[www.prestoncarnival.co.uk](http://www.prestoncarnival.co.uk)



Partner

Preston City Council

[www.preston.gov.uk](http://www.preston.gov.uk)



Reach Solutions

[@reachforsmes](https://twitter.com/reachforsmes)  
[www.reachsolutions.co.uk](http://www.reachsolutions.co.uk)



*"this is one **BUG** you'd like to catch"*

**Telephone 01772 367717**



**All your Utility needs in one place,  
from Energy to Waste Management**

**Why not speak to us today?**

*We are proud to be a  
dedicated partner of:*



[www.businessutilitiesgroup.co.uk](http://www.businessutilitiesgroup.co.uk)





# Our Exhibitors

More exhibitors on [page 34](#).

# LANCASHIRE BUSINESS EXP 2023



RKMS Group

[www.rkmsuk.co.uk](http://www.rkmsuk.co.uk)



Rowen Accountants

[www.rowenaccountants.co.uk](http://www.rowenaccountants.co.uk)



Partner

Runshaw College

[www.runshaw.ac.uk](http://www.runshaw.ac.uk)



Safe & Insured

Safe and Insured

[@safeandinsured](https://www.safeandinsured.com)  
[www.safeandinsured.com](http://www.safeandinsured.com)



Serconnect

[www.serconnect.co.uk](http://www.serconnect.co.uk)



Seriun

[www.seriun.co.uk](http://www.seriun.co.uk)



Partner

Shout Connect

[@shoutconnect](https://www.shoutconnect.ul)  
[www.shoutconnect.ul](http://www.shoutconnect.ul)



Smile Promotions

[www.smile-promotions.co.uk](http://www.smile-promotions.co.uk)



Partner

South Ribble Borough Council

[www.businessinsouthribble.com](http://www.businessinsouthribble.com)



# LANCASHIRE SKILLS PLEDGE

The Lancashire Skills Pledge provides businesses with one door to find out more about Lancashire’s key skills and training initiatives.

We understand that the day-to-day running of a business is demanding, which is why we created the Lancashire Skills Pledge to offer impartial advice, support, access to funded skills training and to gain recognition for those businesses supporting Lancashire residents.

**Sign up to the pledge, and you'll join more than 200 businesses;**  
working with us to develop their teams,  
recruit new talent and support their local communities.

**So do you want impartial advice on:**

- Apprenticeships
- Skills & Training
- Recruitment

**Or... Do you want to help the community by:**

- Giving an hour or becoming an Enterprise Advisor in schools
- Offer an industry or work placement
- Becoming an Apprentice Ambassador
- Offer an industry placement to university student



**Then signup today to the Lancashire Skills Pledge**

[www.lancashireskillshub.co.uk/lancashire-skills-pledge](http://www.lancashireskillshub.co.uk/lancashire-skills-pledge)





# Our Exhibitors

More exhibitors on [page 38](#).

# LANCASHIRE BUSINESS EXP 2023



Stone Create

@stonecreate  
www.stonecreate.com



Taylors Estates

@estates\_taylors  
www.taylors-estates.com



Tech Buyers Club

www.techbuyersclub.co.uk



The Flower Bowl Entertainment Centre

@theflowerbowlec  
www.theflowerbowl.uk



The Fun Experts

@thefunexperts  
www.thefunexperts.co.uk



The IT Dept

@theitdept  
www.theitdept.co.uk



True Bearing Chartered Financial Planners

@truebearingifa  
www.truebearing.co.uk



Partner

University of Central Lancashire

www.uclan.ac.uk



UK Healthcare™

*Looking after every body*

UK Healthcare

www.ukhealthcare.org.uk

# SKILLS FOR LIFE MULTIPLY

Multiply is aimed at helping people understand and use maths in daily life, home, and work.

Whether that be improving household finances, helping children with homework, or improving job specific numeracy skills.

People who improve their numeracy skills are more employable, gain higher wages, have better wellbeing, and will be more able to progress to higher levels of training and work.

Businesses who develop their employees' numeracy skills can boost productivity, increase profits, and improve employee retention.

**Eligibility:** If you're aged 19 and over and don't have maths GCSE at grade C (or equivalent)

[#MultiplyLancashire](#)





**Shout Connect** is a unique 8,000 square foot business hub on Preston's Docklands with stunning waterside views, where North West businesses can meet, work, relax and network.

Our versatile facilities are available for a variety of purposes including desk hire, training days, team meetings, networking events, product launches and much more. A range of packages are available from half days through to regular usage. **Contact us to arrange a visit.**

## Contact Us

Shout Connect, Units 1 & 2  
Edward VII Quay, Navigation Way  
Preston, PR2 2YF

 [info@shoutconnect.uk](mailto:info@shoutconnect.uk)

 01772 935930

The **Shout Connect** site is also the home of the Shout Connect team, so feel free to pop in and say hello!

Visit [www.shoutconnect.uk](http://www.shoutconnect.uk)

## Why choose Shout Connect?

- Desk with waterside views
- Free onsite parking
- Unlimited tea/coffee
- Multiple meeting spaces
- Superfast Internet (*wired or wireless*)
- Access to our American Diner
- Access to onsite networking events (*subject to availability*)
- Printer/copier service
- Business address & mail sorting service

Visit  
[www.ShoutConnect.uk](http://www.ShoutConnect.uk)







## Conference Room

Our multipurpose conference room can cater for events for up to 80 people in various layouts. With waterside views and a bright, contemporary setting, our conference room is the ideal collaborative space.



## Coworking Space

**Shout Connect's** coworking space is fully air conditioned and benefits from open views of Preston Docklands. Flexible packages are available from single day hire to having your own dedicated workspace.



## American Diner

Our American Diner is a relaxed space to meet and can also be used as versatile event venue with a difference. Free tea and coffee is available from our diner for all visitors to **Shout Connect**.

**Shout Connect's** coworking space is a great place to work, meet and socialise. Flexible packages are available from individual day passes through to permanent desk locations. Our coworking space is fully air conditioned and features several small meeting areas to catch up with your colleagues. Every desk includes power and access to our superfast internet through either a wired or wireless connection. All visitors to Shout Connect benefit from full access to onsite networking events (*subject to availability*) and unlimited access to our American Diner.

Enhance your coworking space with a Month Pass Plus, which includes a Shout Network membership and its extensive list of benefits.



## Podcast & Media Suite

Our fully equipped Podcast Studio can be hired to create your own podcast content, as a photography suite for holding professional virtual meetings with the benefit of superfast Wi-Fi.



## Meeting Rooms

With several meeting rooms and quiet spaces available, we can cater for small team meetings, one to ones and interviews. We have rooms and spaces that can accommodate between 1 to 10 people.



## Boardroom

The Shout Connect boardroom is available for a variety of uses. Events and meetings can be hosted for up to 30 people and the layout of the room can be configured to suit your needs.



# Our Exhibitors

# Our Exhibitors

# LANCASHIRE BUSINESS EXP 2023



University of  
**Salford**  
MANCHESTER

University of Salford

[www.salford.ac.uk/working-with-business](http://www.salford.ac.uk/working-with-business)



Vertigo Sound

@sound\_vertigo  
[www.vertigosound.co.uk](http://www.vertigosound.co.uk)



Watch Tower

@cbpartners\_cic  
[www.cbpartners.org](http://www.cbpartners.org)



Watson  
Ramsbottom  
Solicitors

[www.watsonramsbottom.com](http://www.watsonramsbottom.com)



Westcoast  
Workwear

[www.westcoastworkwear.co.uk](http://www.westcoastworkwear.co.uk)



Woodcocks Haworth  
& Nuttall Solicitors

@whnsolicitors  
[www.whnsolicitors.co.uk](http://www.whnsolicitors.co.uk)



Worldpay by FIS

[www.worldpay.fisglobal.com](http://www.worldpay.fisglobal.com)



Support your  
local Hospital  
Charity by becoming  
a corporate partner

Together we can make  
a difference!



For more details call: **01772 528500**  
or email: [charity@lthcharity.org.uk](mailto:charity@lthcharity.org.uk)

   @LancHospCharity

[www.lthcharity.org.uk](http://www.lthcharity.org.uk)

# Bowker Motor Group

THE JOY IN THE JOURNEY



**INEOS**  
GRENADIER

**PORSCHE**

Bowker  
Ribble Valley



**BMW**  
**MOTORRAD**



START YOUR JOURNEY WITH US TODAY.  
[www.BowkerMotorGroup.co.uk](http://www.BowkerMotorGroup.co.uk)

DISCOVER  
MORE.

