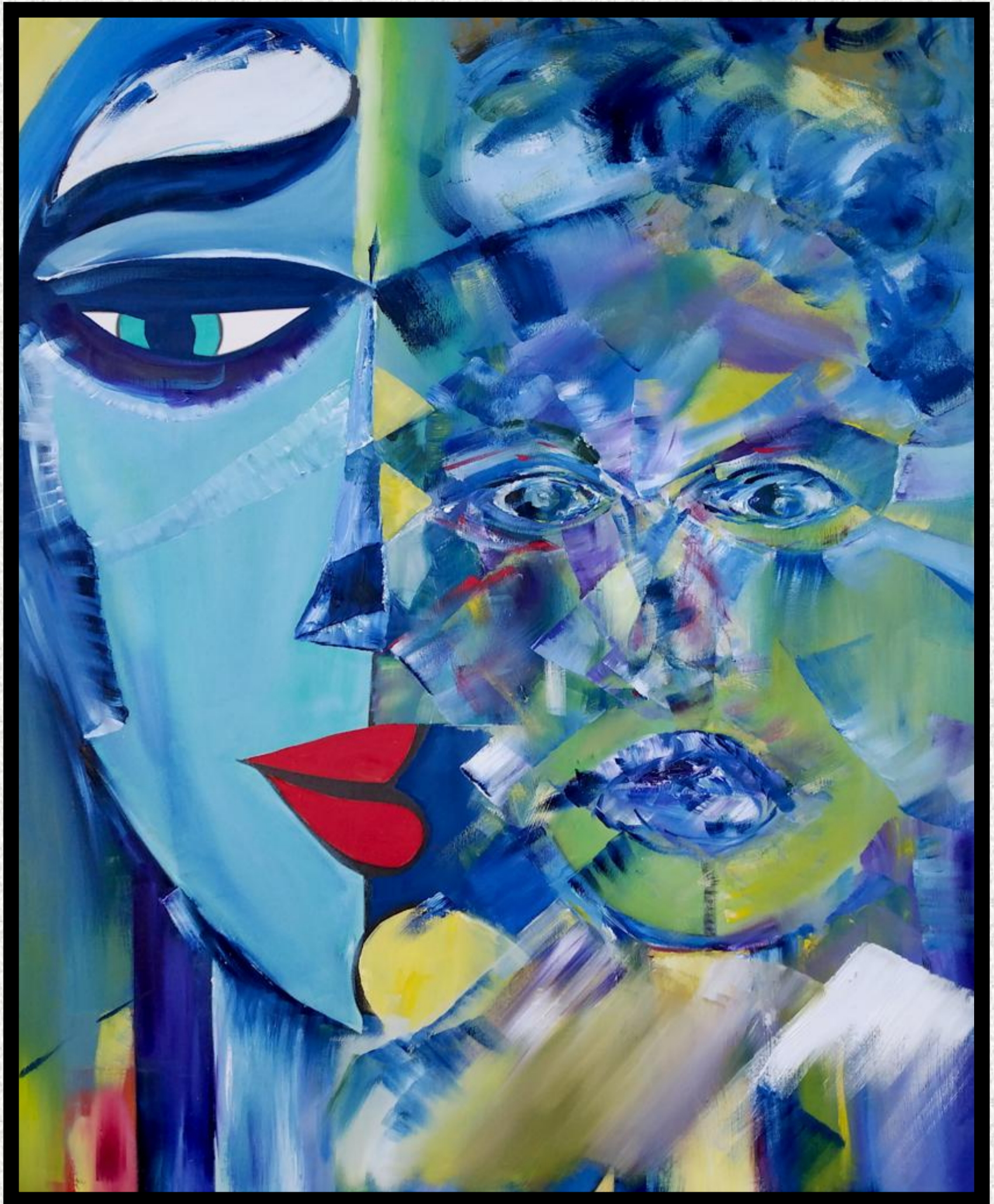


JMFAGallery Art Investment & Collectors Guide 2025



JMFAGallery Art Investment & Collectors Guide 2025

Video and Resources

[About Kate Johnson](#)

[Kate's Portfolio](#)

[About Sam "Ketch" Monet](#)

[Ketch's Portfolio](#)

[Home](#)

[Exhibitions](#)

[Creativity](#)

[Gallery](#)

[Studio](#)

[Endorcements](#)

[Sold](#)

Your Art Defines You

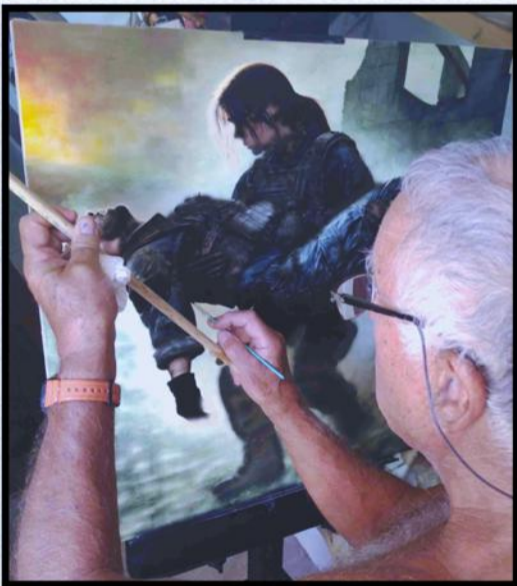
JMFAGallery
Kate Johnson
Art Investment & Collectors Guide
2025



JMFAGallery.com

Kate's Guide

JMFAGallery
Sam "Ketch" Monet
Art Investment & Collectors Guide
2025



JMFAGallery.com

Ketch's Guide



info@JMFAGallery.com

JMFAGallery.com

All photographs and any material herein
copyright 2025, Sam "Ketch" Monet and
JMFAGallery.com; 1741 Ala Moana Blvd.
#98, Honolulu, Hawaii.

JMFAGallery.com

Info@JMFAGallery.com

JMFAGallery Art Investment & Collectors Guide 2025



JMFAGallery.com proudly represents some of Hawaii's most talented artists, showcasing original oil-on-canvas fine art. Our collection features works that explore historical and contemporary international themes, alongside pieces that capture the unique beauty of Hawaii. Every purchase includes a Certificate of Authenticity, ensuring the value and originality of your artwork.

JMFAGallery Art Investment & Collectors Guide 2025



Kate Johnson is an emerging abstract expressionist painter from Santa Cruz, California, recognized for her large-scale paintings on canvas that balance abstraction and realism. Although her conception of a subject design may not be completely predetermined before she starts a new painting, her color choices are typically conceived in advance. Her work explores the human form in abstract compositions while also incorporating strikingly realistic depictions of faces and a vibrant expression of movement and dynamism. Mostly self-taught, she has also studied several genres of art, including printmaking and figurative drawing.

Johnson has exhibited her work in galleries in California and Hawaii and has gained solid interest in her work from the outside world. She has also sold her work in both states to individual collectors and businesses. A former high-level triathlete, she infuses her art with the discipline, strength, and energy that defined her athletic career. Her deep connection to movement extends beyond the canvas—she has spent years racing catamarans throughout Hawaii and Tahiti, embracing the rhythm of the water much like she does in her art. A true lover of the arts, her life has been immersed in painting, music, and sport.

JMFAGallery Art Investment
& Collectors Guide 2025



Woman 30W"x40H"x1"D oil on canvas, 2024

This oil-on-canvas painting is **Kate's self-portrait**, a reflection of her world and the essence of who she is—expressed through color, texture, and emotion on the canvas.

JMFAGallery Art Investment
& Collectors Guide 2025



***Pensive Woman* 30W"x40H"x1"D oil on canvas, 2024**

In this oil-on-canvas painting **Kate depicts women in three different stages of life, each capturing distinct moods and emotions.** Through this piece, Kate explores the evolution of experience, strength, and vulnerability over time. It is a deeply personal work, as she feels each stage reflects a part of her, woven into the canvas with every brushstroke. This painting is **part of a three-piece series**, with each artwork sold separately, allowing collectors to appreciate them individually or as a complete narrative of transformation and self-reflection.

JMFAGallery Art Investment
& Collectors Guide 2025



***Women - Friends* 30W"x40H"x1"D oil on canvas, 2024**

In this oil-on-canvas painting **Kate depicts women in three different stages of life, each capturing distinct moods and emotions.** Through this piece, Kate explores the evolution of experience, strength, and vulnerability over time. It is a deeply personal work, as she feels each stage reflects a part of her, woven into the canvas with every brushstroke. This painting is **part of a three-piece series**, with each artwork sold separately, allowing collectors to appreciate them individually or as a complete narrative of transformation and self-reflection.

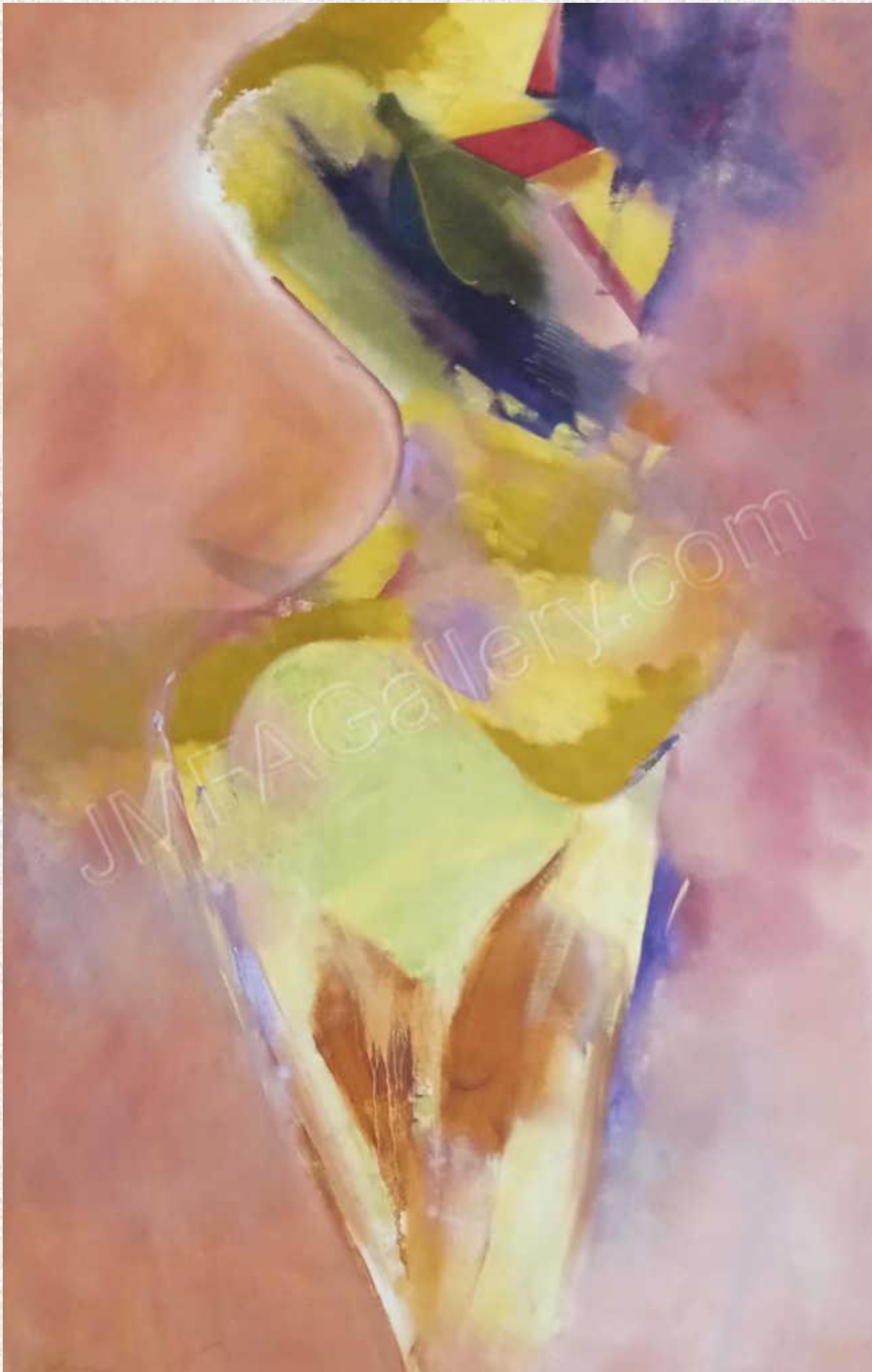
JMFAGallery Art Investment
& Collectors Guide 2025



***Complex Woman* 30W"x40H"x1"D oil on canvas, 2024**

In this oil-on-canvas painting **Kate depicts women in three different stages of life, each capturing distinct moods and emotions.** Through this piece, Kate explores the evolution of experience, strength, and vulnerability over time. It is a deeply personal work, as she feels each stage reflects a part of her, woven into the canvas with every brushstroke. This painting is **part of a three-piece series**, with each artwork sold separately, allowing collectors to appreciate them individually or as a complete narrative of transformation and self-reflection.

JMFAGallery Art Investment
& Collectors Guide 2025



***Femme Rose* 40W"x60H"x2"D oil on canvas, 2018**

Kate was inspired to create ***Femme Rose*** as a conceptual portrayal of female strength and comfort, deeply rooted in untamed natural instincts. The painting embodies a soothing and gentle interpretation of femininity—a woman in pink, exuding grace and resilience. The use of tempered pastels evokes a sense of lightness and tranquility, inviting the viewer to experience the delicate balance of strength and softness that defines the essence of ***Femme Rose***.

JMFAGallery Art Investment
& Collectors Guide 2025



Reclining Woman 67W"x47H"x2"D oil on canvas, 2016

Kate's deep appreciation for the female form inspired her to create this large oil-on canvas painting, depicting a **reclining nude in a moment of solitude**. Through soft contours and expressive brushwork, she sought to capture her serenity, vulnerability, and inner strength, inviting the viewer into a space of quiet reflection and timeless beauty.

JMFAGallery Art Investment
& Collectors Guide 2025



***Naima* 67W"x46H"x2"D oil on canvas, 2016**

Naima is an oil-on-canvas abstract painting that captures the essence of women in movement, embodying the rhythm and emotion of the song. Through fluid brushstrokes and dynamic composition, the piece conveys grace, strength, and the interplay of form and motion. The abstract elements reflect the depth and soul of the music, transforming sound into a visual experience that resonates with energy and elegance.

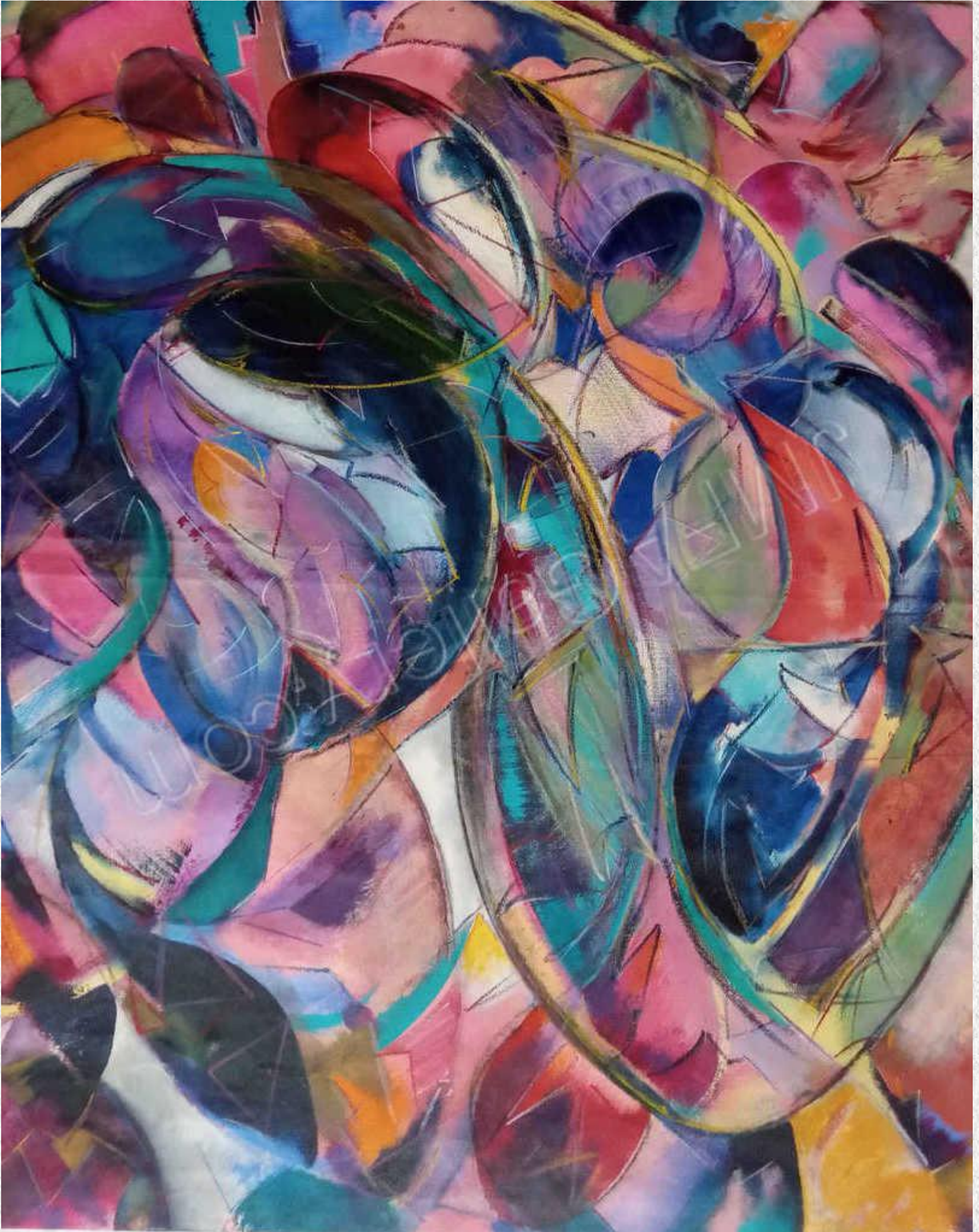
JMFAGallery Art Investment
& Collectors Guide 2025



***Woman's Melody* 30W"x40H"x1"D oil on canvas, 2024**

Woman's Melody is an oil-on-canvas painting in which Kate captures the essence of the feminine spirit, enveloped in an atmosphere of grace and introspection. Through flowing forms, delicate yet powerful brushstrokes, and a harmonious composition, the piece evokes a sense of depth, strength, and serenity. The painting resonates like a melody, expressing the timeless beauty and complexity of womanhood.

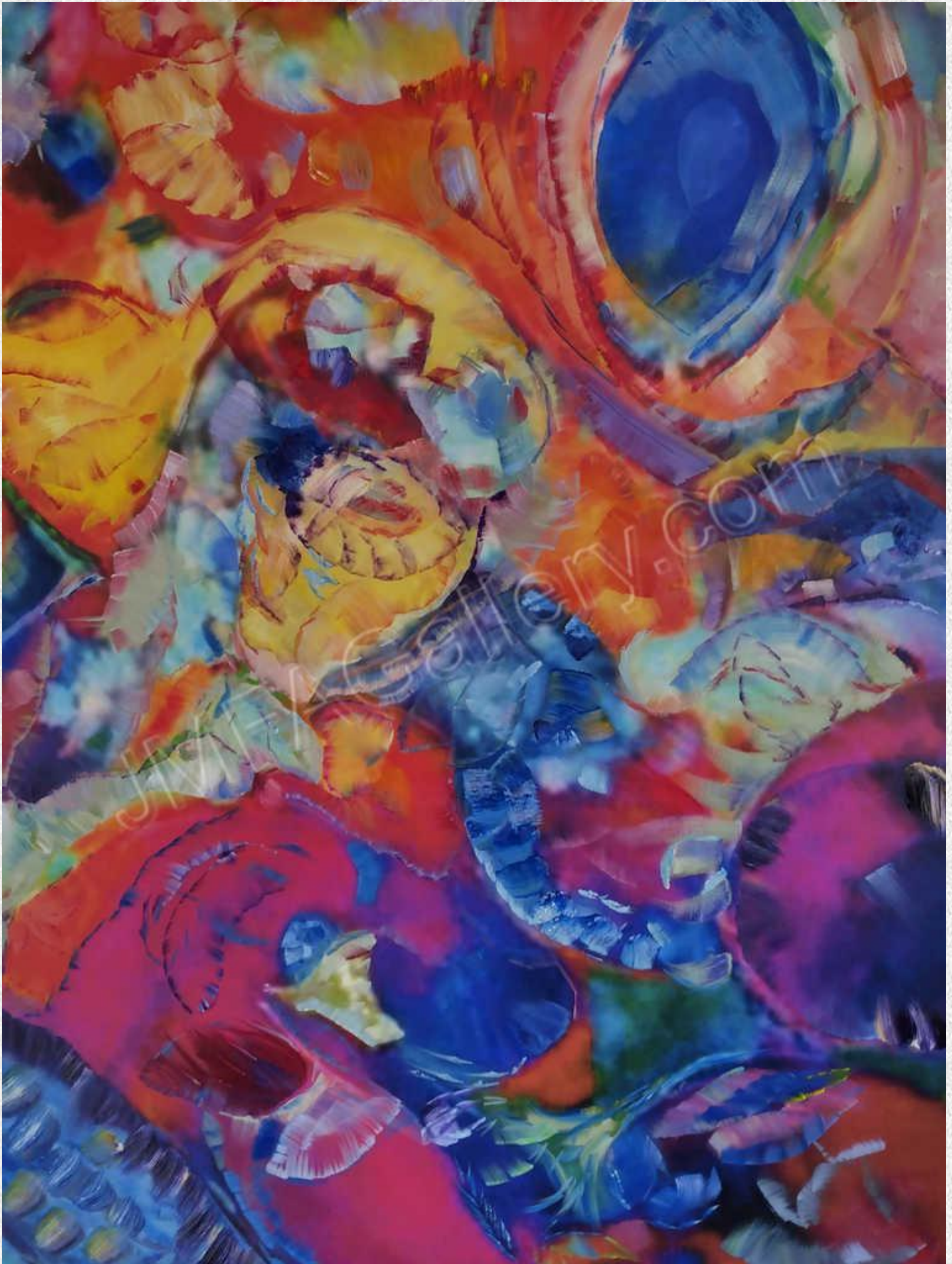
JMFAGallery Art Investment
& Collectors Guide 2025



***My Funny Valentine* 42W"x48H"x2"D oil on canvas, 2016**

Stretched, sealed, and ready for worldwide shipping, ***My Funny Valentine*** embodies Kate's abstract vision of **energy and heartfelt color in motion**. This one-of-a-kind artwork will never be reproduced as prints, ensuring its uniqueness.

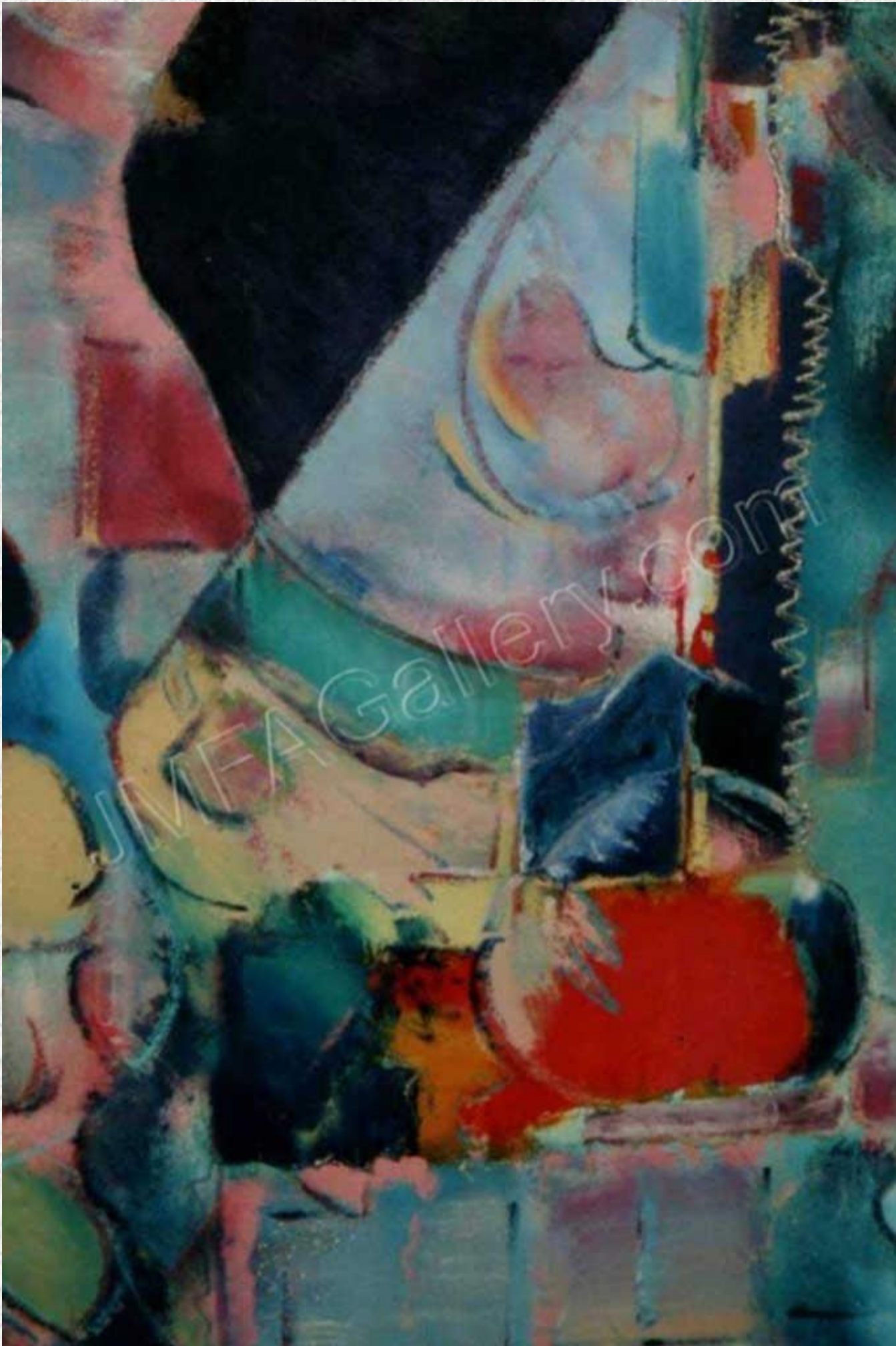
JMFAGallery Art Investment
& Collectors Guide 2025



***Flora and Fauna* 30W"x40H"x2"D oil on canvas, 2024**

Flora and Fauna is a striking large oil-on-canvas painting featuring bold colors and abstract forms, dynamically portraying the beauty of flora and fauna in a vivid and expressive composition.

JMFAGallery Art Investment
& Collectors Guide 2025



***Neighborhood Blast* 65W"x42H"x2"D oil on canvas, 2018**

Neighborhood Blast is a large abstract oil-on-canvas painting where Kate spontaneously unleashed bold, bright colors and dynamic design onto the canvas. This energetic composition is a celebration of spontaneity and creative freedom, blending vibrant hues with expressive movement. The piece radiates intensity and joy, inviting the viewer to experience the raw power of color and form in an uninhibited, explosive visual statement.

JMFAGallery Art Investment
& Collectors Guide 2025



***Brick Oven* 48W"x42H"x2"D oil on canvas, 2015**

Brick Oven is an oil-on-canvas abstract painting that embodies Kate's artistic vision through bold color and dynamic design. The interplay of shapes, textures, and hues creates an expressive composition, evoking warmth, structure, and energy. This piece is a fusion of abstraction and imagination, inviting the viewer to interpret its depth and movement in a personal way.

JMFAGallery Art Investment & Collectors Guide 2025



***Hawaiian Reef* 36W"x24H"x1"D oil on canvas, 2024**

This oil-on-canvas painting Kate captures the breathtaking beauty of a colorful ***Hawaiian reef***, teeming with life. Vibrant fish dart through the coral, while sharks glide through the crystal-clear waters. The bold, dynamic colors bring the underwater world to life, immersing the viewer into the energy and movement of the ocean. This piece celebrates the richness of Hawaii's marine ecosystem, showcasing its harmony, diversity, and raw natural beauty.

JMFAGallery Art Investment
& Collectors Guide 2025



***John Paul Jones* 24W"x24H"x1"D oil on canvas, 2024**

Kate immortalized ***John Paul Jones***, the legendary hero of the American Revolution, in this dramatic oil-on-canvas depiction of a fierce sea battle. Through bold brushstrokes and dynamic composition, this painting captures the intensity of naval warfare, the relentless spirit of Jones, and the fight for freedom on the high seas. His legacy lives on in this powerful tribute to courage, determination, and the birth of a nation.

JMFAGallery Art Investment
& Collectors Guide 2025



***Hawaiian Mountain Stream* 36W"x 24H"x1"D oil on canvas, 2024**

Kate's abstract impressionist oil-on-canvas painting captures the essence of a ***Hawaiian mountain stream***, with the majestic Ko'olau Mountains in the background. Using thick, expressive brushstrokes, she conveys the movement of the flowing water and the rugged beauty of the landscape. The interplay of color and texture brings depth and energy to the scene, evoking the raw, untamed spirit of Hawaii's natural wonders.

JMFAGallery Art Investment
& Collectors Guide 2025



***Akaka Falls* 24W"x24H"x1"D oil on canvas, 2024**

This oil-on-canvas painting Kate captures the breathtaking beauty of ***Hawaii's Akaka Falls*** through bold, expressive colors and dynamic, impasto brushstrokes. The cascading water, lush tropical surroundings, and vibrant hues create a visually striking yet harmonious composition. The visual concept enhances the natural wonder of the falls, making it a captivating and pleasant experience for the eye, evoking both energy and tranquility.

JMFAGallery Art Investment & Collectors Guide 2025



For over 50 years, Hawaii-based artist Sam “Ketch” Monet has been captivating audiences with his distinctive Florentine Impressionist style, creating oil-on-canvas masterpieces that encompass portraits, contemporary themes, current world events, and anything else that sparks his imagination.

Educated in Sweden and France widely traveled, Sam’s extensive study and dedication to his craft have enabled him to create works that seem to transcend the two-dimensional plane, drawing viewers into a dynamic, almost three-dimensional experience.

Beyond painting, Sam has applied his artistic vision to designing and building custom homes, incorporating elements of Louis XV-style inlaid woods, intricate mosaic tiles, and stained glass.

A true Renaissance man, Sam has also competed in professional motocross and catamaran racing, pursuits that fuel his passion for speed, movement, and precision—elements that often find their way into his art. Today, he continues to draw inspiration from the stunning beauty of his island home, reflecting Hawaii’s vibrant landscapes and culture in his artwork.



***Victims of Conflict - The Innocent* 30W"x30H"x1"D oil on canvas, 2024**

Ketch's three-panel oil on canvas painting, *Victims of Conflict*, draws deeply from personal experiences and historical reflections. The inspiration began with a journey he took in the 1970s, traveling by car with friends from Stockholm to Cairo. In Beirut, during the height of the civil war and amidst the plight of Palestinian refugees, we were confronted by the brutal realities of conflict. A piece of shrapnel lodged in his foot led him to an infirmary, where he witnessed firsthand the overwhelming carnage, pain, and suffering endured by women and children.

Years later, motivated by the ongoing slaughter of innocents in Gaza and Kyiv, Ketch revisited these memories to create the first panel. This panel depicts the profound suffering of the innocent. The process of painting was deeply emotional; reflecting on those harrowing moments and channeling them into the raw expression of their anguish.

JMFAGallery Art Investment
& Collectors Guide 2025



***Victims of Conflict - Civilization* 30W"x30H"x1"D oil on canvas, 2024**

Ketch's three-panel oil on canvas painting, *Victims of Conflict*, draws deeply from personal experiences and historical reflections. The inspiration began with a journey he took in the 1970s, traveling by car with friends from Stockholm to Cairo. In Beirut, during the height of the civil war and amidst the plight of Palestinian refugees, we were confronted by the brutal realities of conflict. A piece of shrapnel lodged in his foot led him to an infirmary, where he witnessed firsthand the overwhelming carnage, pain, and suffering endured by women and children.

The second panel explores the broader toll of war on civilizations throughout history. While driving along the Turkish coast on the same journey, he encountered archaeologists excavating what they believed to be the ruins of Troy, a city destroyed by Greek jealousy and rage. This imagery inspired Ketch to paint **Achilles at Troy, his horses and chariot symbolizing the advanced weaponry of their time.** Initially, he depicted Hector being dragged behind the chariot but later replaced him with the ruins of Troy, representing the destruction wrought by human pride and vengeance.

JMFAGallery Art Investment
& Collectors Guide 2025



***Victims of Conflict - The Warriors* 30W"x30H"x1"D oil on canvas, 2025**

Ketch's three-panel oil on canvas painting, *Victims of Conflict*, draws deeply from personal experiences and historical reflections. The inspiration began with a journey he took in the 1970s, traveling by car with friends from Stockholm to Cairo. In Beirut, during the height of the civil war and amidst the plight of Palestinian refugees, we were confronted by the brutal realities of conflict. A piece of shrapnel lodged in his foot led him to an infirmary, where he witnessed firsthand the overwhelming carnage, pain, and suffering endured by women and children.

The third panel depicts the individual cost of war. A young soldier, his boots and gloves brand new, has just arrived at the front lines. **A female soldier whose tattered clothing and worn boots tell the story of long battles fought.** The man has suffered a mortal wound—his life cut short before it even began, symbolized by the only worn part of his uniform: the bottom of his pants. **She carries his lifeless body from the battlefield, a burden she will bear for the rest of her life.**

JMFAGallery Art Investment
& Collectors Guide 2025



***Joan d'Arc* 16W"x20H"x1"D oil on canvas, 2024**

Ketch's studies in France deepened my historical appreciation for the enduring struggle of the French people in their pursuit of freedom from oppression, greed, and the dominance of a foreign power. Inspired by this spirit, my oil-on-canvas portrayal of ***Joan of Arc*** captures not only her unwavering courage and strength of character but also her timeless beauty. This painting serves as a tribute to her legacy, preserving her resilience and determination for generations to come.

JMFAGallery Art Investment
& Collectors Guide 2025



***Na Wahine* 30W"x30H"x1"D oil on canvas, 2024**

***Na Wahine*, Ketch's oil-on-canvas painting of a Hawaiian Hula dancer, is a tribute to the legacy of his mother—a gifted composer and esteemed Hula *kumu*—and his sister, whose grace and artistry in Hula were unparalleled. Their strength, elegance, and deep cultural connection inspired this piece, capturing the power and fluidity of their movements, a testament to the timeless beauty of Hula.**

JMFAGallery Art Investment
& Collectors Guide 2025



***Hula Girl* 30W"x30H"x1"D oil on canvas, 2024**

***Hula Girl*, an oil-on-canvas painting, Ketch captures the beauty of his Hawaiian island home—its stunning beaches, pristine waters, rich culture, and the graceful art of hula dance. This piece embodies the spirit of aloha, celebrating the harmony between nature, tradition, and movement.**

JMFAGallery Art Investment
& Collectors Guide 2025



***Femme Tahitienne* 24W"x36H"x1"D oil on canvas, 2024**

In this oil-on-canvas painting, *Femme Tahitienne*, Ketch captures the beauty and allure of the women of French Polynesia, inspired by his many visits to these enchanting islands. Their unique blend of French and Polynesian heritage, combined with the warmth and spirit of their island home, is reflected in this piece. Through expressive brushstrokes and vibrant tones, he seeks to convey the elegance, strength, and mystique that define the women of Tahiti.

JMFAGallery Art Investment
& Collectors Guide 2025



***Reclining Woman* 36W"x24H"x1"D oil on canvas, 2024**

In ***Reclining Woman***, an oil-on-canvas painting, Ketch depicts a graceful, beautiful, and elegant woman resting on a couch. Her poised expression and relaxed posture convey a quiet confidence, celebrating her self-assurance and inner strength. Through soft contours and expressive brushstrokes, this piece captures the essence of femininity, comfort, and self-acceptance.

JMFAGallery Art Investment
& Collectors Guide 2025



***Young Love* 24W"x36H"x1"D oil on canvas, 2024**

In Ketch's oil-on-canvas painting of *Young Love* embracing face to face, vibrant colors swirl around them, enveloping their connection in a dynamic, expressive energy. The thick application of paint adds depth and texture, enhancing the intensity of their bond while creating a rich, immersive composition. This piece captures the passion and emotion of love through bold color and its application.



***Pieta* 30W"x40H"x1"D oil on canvas, 2016**

Pieta is part of a thought-provoking series of oil-on-canvas paintings that also includes *Adam and Eve*, *Crucifixion*, and *Resurrection*. These works reinterpret traditional Western religious themes through abstract compositions, bold colors, and stark contrasts, serving as powerful reminders of the profound influence religion has had on our world—for both good and evil.



Vase of Flowers 24W"x36H"x1"D oil on canvas, 2024

Inspired by Van Gogh's iconic brushstrokes and vibrant use of color, Ketch reimagined this *classic vase of flowers*, infusing it with fresh, rich, and joyful hues. Using oil on canvas, Ketch sought to bring new life to his timeless composition, creating a piece that celebrates his legacy while standing as a unique work of fine art. This painting offers a modern yet timeless addition to any collection, radiating warmth and happiness.

JMFAGallery Art Investment
& Collectors Guide 2025



***Lilikoi Vine* 24W"x36H"x1"D oil on canvas, 2025**

This oil-on-canvas painting was inspired by the vibrant *lilikoi vine* that grows along the fence at the entrance to Ketch's houseboat studio in Waikiki, Hawaii. The lilikoi flower, with its striking beauty, takes center stage in the composition, gracefully suspended from the top of the painting. The vase serves merely as a prop, emphasizing the natural elegance of the vine as it thrives freely, unconfined by traditional still-life arrangements.

JMFAGallery Art Investment
& Collectors Guide 2025



Octopus 30W"x30H"x1"D oil on canvas, 2023

While diving on the Great Barrier Reef, Ketch had a close encounter with the incredibly small yet highly venomous *Australian blue-ringed octopus*. Meeting this tiny but deadly creature face to face left a lasting impression on me. Inspired by its formidable presence despite its size, he decided to use his Florentine painting technique to magnify its form in this oil-on-canvas artwork. By amplifying its size on the canvas, Ketch aimed to convey the true power and lethal beauty of this remarkable sea creature, which has been responsible for many fatalities.

JMFAGallery Art Investment
& Collectors Guide 2025



***Taro Stream* 24W"x36H"x1"D oil on canvas, 2024**

This oil-on-canvas painting captures the serene beauty of a Hawaiian mountain stream, framed by the majestic Ko'olau Mountains in the background and lush taro plants in the foreground. It embodies the essence of Ketch's island home, where crystal-clear waters flow from the verdant peaks, nourishing the land before merging with the vast blue Pacific Ocean. Through rich colors and expressive brushwork, this piece reflects the harmony and natural abundance of Hawaii's landscapes.

**JMFAGallery Sam “Ketch” Monet Art
Investment & Collectors Guide 2025**



JMFAGallery.com is a unique artist studio specializing in creating sophisticated yet powerful original oil-on-canvas artworks, ideal for homes, businesses, and collectors.

We provide professional packing and shipping services to ensure safe delivery. For galleries and design professionals, our offerings allow you to present your clients with extraordinary, one-of-a-kind pieces that elevate any space.

Certificate of Authenticity provided with each purchase.