

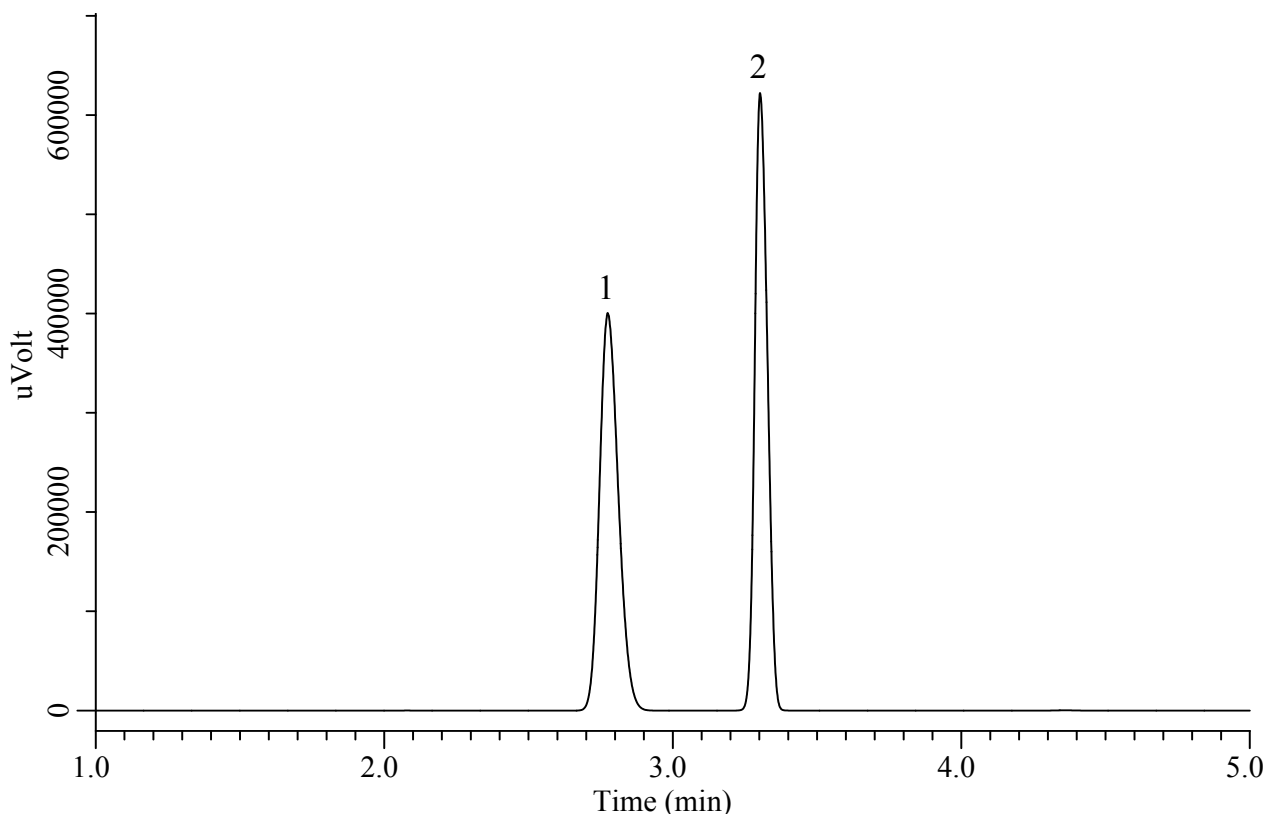
# InertSearch™ for GC

InertCap® Applications

## Analysis of Sevoflurane

(Under the Condition of Japanese Pharmacopoeia 16)

Data No. GA 266-0904



### Conditions

**System** : GC-FID  
**Column** : InertCap 624  
0.32 mm I.D. x 30 m df = 1.8  $\mu$ m  
**Col. Cat. No.** : 1010-14747  
**Col. Temp.** : 40 °C  
**Carrier Gas** : He 80 kPa  
**Injection** : Split 1:20  
200 °C  
**Injection Vol.** : 1  $\mu$ L  
**Detection** : FID Range  $10^2$   
225 °C  
**Sample** : Standard

### Analyte

1. Sevoflurane (50 %)  
2. Dimethoxymethane (50 %)

Resolution (1, 2) : 5.1 ( $\geq 3$ )  
RSD of the peak area ratio  
of 2 to 1 (%) (n=6) : 0.10 ( $\leq 1.0$ )