



SANIPEXGROUP

architectural hardware,
ironmongery & **hotel amenities.**

the heart of the home



hardware that defines design.

crafted details that shape every space



From precision-engineered mechanisms to sculptural forms that enrich the touch and feel of a space, the new Hardware & Ironmongery collection from SANIPEX GROUP celebrates the meeting point of craftsmanship and design.

Curated from the world's most respected makers, each piece embodies excellence — expertly forged metals, hand-finished surfaces, and timeless profiles that complement both contemporary and classic interiors.

Whether defining the character of a door, enhancing cabinetry, or completing a cohesive design vision, hardware becomes more than a functional detail. It becomes an architectural statement — refined, durable, and crafted to last.

Representing leading international brands selected for their innovation, heritage, and meticulous attention to detail, our collection promises enduring quality for residential, hospitality, and commercial spaces.

brands at **sanipex.**

olivari	04
dnd 	20
oliver knights 	32
croft	40
armac martin	46
hendel & hendel	56
hewi	70
richmond	78
dolphin	94
aquaeco	96

OLIVARI

Handles made in Italy since 1911

Olivari stands at the intersection of architecture and design, where timeless form and material integrity converge. For more than 115 years, this Italian house has collaborated with visionary designers to transform a simple act — opening a door — into an expression of refined intention. With a lineage rooted in innovation, proportion and tactile excellence, Olivari's handles become integral elements of space, enriching interiors with quiet sophistication and enduring quality.

italian design refined for architectural spaces

Olivari embodies more than a century of Italian design and engineering — where craftsmanship, thoughtful detail and architectural intent converge to redefine the door handle as a design element in its own right. Each handle is conceived through a dialogue between visionary designers and technical expertise, and meticulously crafted in Olivari's Borgomanero facilities from forged brass to polished finish.





grand park hotel rovinj,
croatia.



izzara towers,
asia.



ysl museum,
africa.



bocconi campus,
milan.



kaust, thuwal,
saudi arabia.

The new campus includes a student residence already inaugurated in 2018 (300-seat Castiglioni Residence), the new SDA Bocconi headquarters consisting of three buildings (Master, Executive, Office), 17 thousand square meters of green open to the public (from January 2020) and a sports and leisure center, with an Olympic swimming pool, which will also be open to the rest of the city.



olivari designers.

where design culture shapes every handle

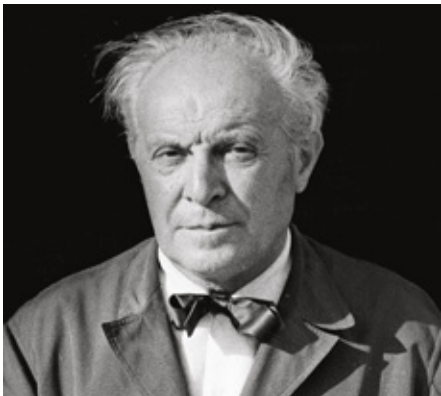
For Olivari, design is not an aesthetic choice — it is a philosophy deeply rooted in architectural culture and innovation. For decades, the brand has collaborated with some of the world's most influential architects and industrial designers to create door handles that transcend functionality and become expressions of design thinking.

By working closely with internationally renowned designers, Olivari continues to shape the language of contemporary hardware — creating pieces that integrate seamlessly into architectural spaces while standing as design objects in their own right.

Featuring designs by internationally acclaimed architects and designers including:

Gio Ponti, Patricia Urquiola, Rem Koolhaas, Jean Nouvel, Piero Lissoni, oolhaas, Jean Nouvel, Piero Lissoni, MAD Architects, Naoto Fukasawa, Daniel Libeskind, Peter Marino, Marcel Wanders, Antonio Citterio, Matteo & Renzo Piano, and many others.

Stefano Boeri · Piero Lissoni · Patricia Urquiola · Rodolfo Dordoni · Jasper Morrison · Studio Citterio Viel





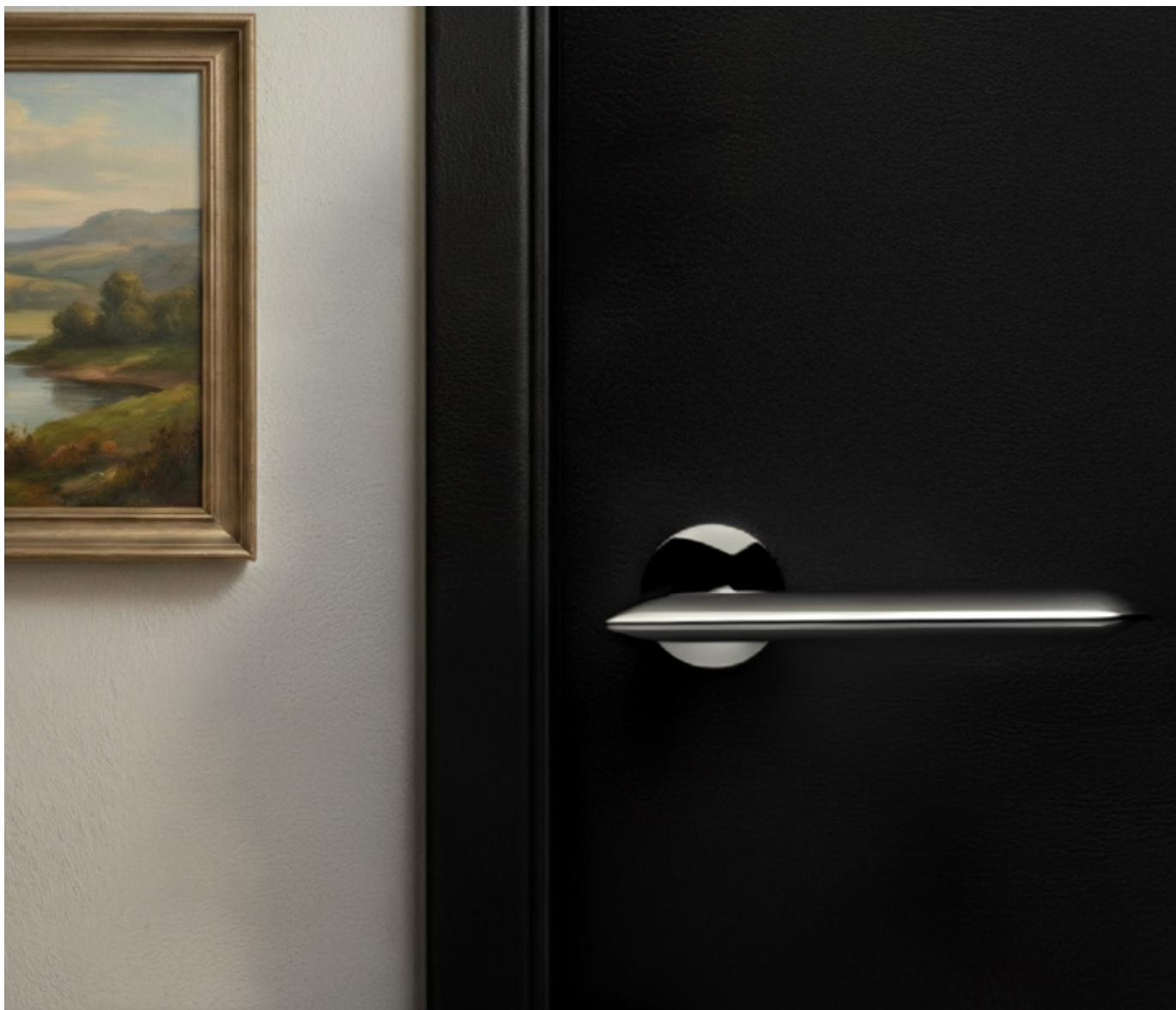


alexandra.

ferdinand a. porsche



Ferdinand A. Porsche brings a legacy of engineering and design excellence to his architectural work. His approach emphasizes precision, balanced proportions and purposeful simplicity. The **Alexandra** handle for Olivari reflects these values — a disciplined form that reads as both technical and timeless, creating a defined presence on the door that is both elegant and confidently engineered.





jean nouvel.

chelsea



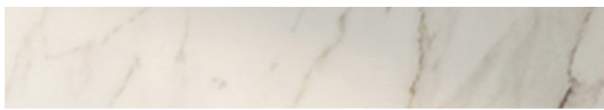
In Olivari's **Chelsea** range — especially in wood finishes — his architectural sensibility comes through as warm, tactile elegance, translating material integrity and refined proportion into handles that enrich wooden surfaces with sculptural grace.



vico magistretti.

club

Vico Magistretti was a master of understated yet expressive design, celebrated for his ability to reconcile functional simplicity with emotional resonance. His Olivari **Club** range channels this legacy into decorative hardware that feels both timeless and inviting. Defined by clean, sculptural lines and thoughtful gestures, the handle is distinguished by its grip enriched with an exclusive Poltrona Frau leather insert, infusing doors with subtle personality and a refined tactile quality.



patricia urquiola.

lucy & conca



Patricia Urquiola is one of Europe's most acclaimed designers, known for her inventive use of form, material and emotional nuance. Her design language fuses sculptural curves with practical sophistication, evoking warmth and tactile pleasure.

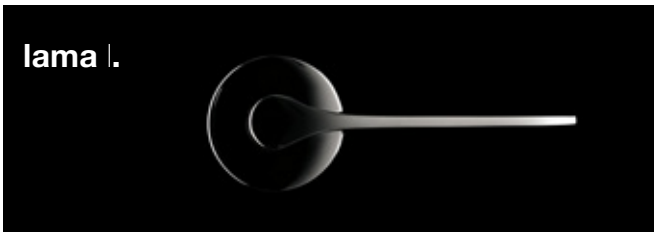
In her Olivari ranges **Lucy** and **Conca**, this ethos manifests as handles with soft, welcoming profiles and refined silhouettes that harmonise utility with approachable, human-centred design.

conca.



lucy.



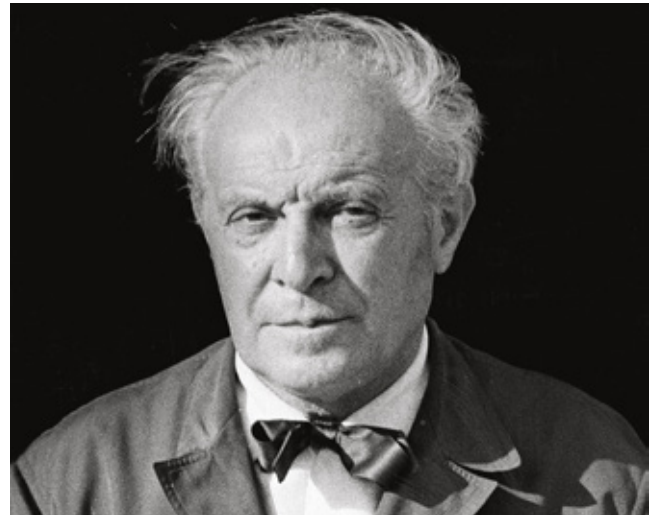


In his Olivari **Lama L** and **Cono** ranges, Ponti's legacy is evident in bold, expressive forms that celebrate silhouette and proportion — handles that serve as architectural punctuation, bringing sculptural clarity to everyday gestures.



gio ponti.

lama l & cono



He taught at the Milan Polytechnic from 1936 al 1961, where he graduated in 1920. In 1928 he founded Domus, a magazine he used to introduce international design culture to Italy.

Gio Ponti was a titan of Italian design and architecture, heralded for weaving classical elegance with modernist innovation. He championed beauty emerging from functional intelligence and cultural expression.



piero lissoni.

plume & link



Lissoni and his multinational team operate across both architectural design and product design, as well as art direction, offering a comprehensive and integrated approach that also includes graphics and corporate identity.

Projects extend globally to include private villas and yachts, residential and hospitality buildings such as Casa Fantini, Conservatorium Hotel, Edition Hotel, Grand Hotel Billia, Mamilla Hotel, Roomers Hotel, Shilla Stay Hotels, Moriki and many more.





link.

His Olivari designs, **Plume** and **Link**, translate this discipline into door handles that balance slender geometry with tactility, creating details that feel both intuitive and elegantly understated in contemporary interiors.

serenella.



marbella.



Studio Olivari represents the in-house creative force behind many of Olivari's timeless classics. This collective approach blends historical insight with contemporary aesthetics, producing designs that speak to both heritage and modern vision. Ranges like **Marbella**, **Serenella** and **Gloria** exemplify this synthesis — door handles with graceful proportions and subtle material poetry that enrich interiors with quiet sophistication.

gloria.





dnd



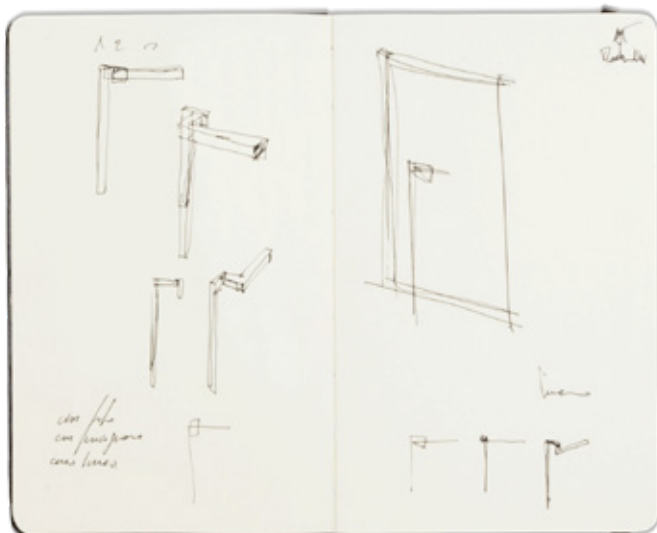
For more than fifty years, Dnd Handles have stood at the forefront of Italian design and craftsmanship, blending a rich manufacturing heritage with a relentless commitment to innovation and quality. Founded in 1968 in the Val Sabbia district — one of Europe's historic centres of metalworking expertise — Dnd has grown into an international benchmark for design-oriented handles, trusted by architects and designers across residential, commercial, and contract projects.



(in)finite.

a line that transcends form by alfonso femia

Designed by Italian architect **Alfonso Femia**, the **(IN)finite** collection reinterprets the door handle as a gesture in motion — a continuous line that extends across the surface, connecting space and experience in a poetic yet precise detail. Rather than simply occupying space, **(IN)finite** is conceived as a two-dimensional thread that arrives from the edges of a door and, in its journey, draws the handle before continuing onward — hinting at movement, memory and the spatial narrative inherent in daily use.



“Soligram” materic and empathic.

That gesture possesses an invisible thread, though we have forgotten it, that unconsciously leads us into the room we open before our eyes or we leave behind us. We want to make visible that thread created by the handle as a moment suspended between two moments.

**Selezionato
ADI DESIGN 2019**
Selected for
ADI DESIGN 2019

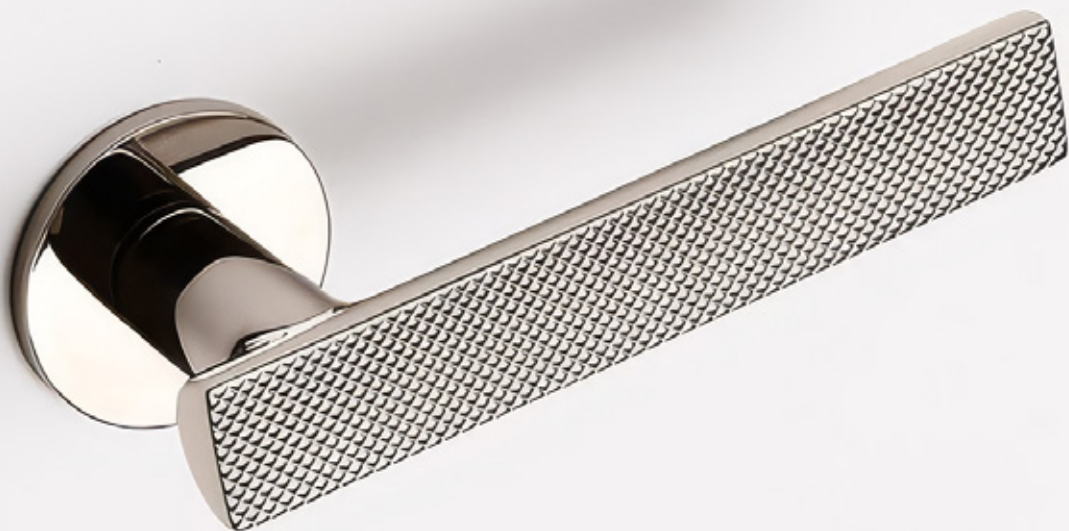
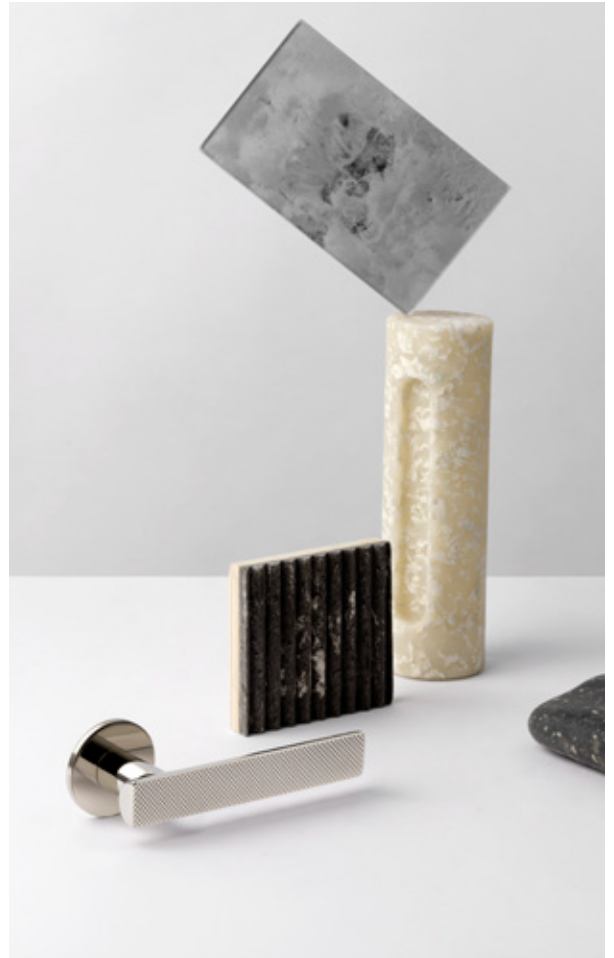


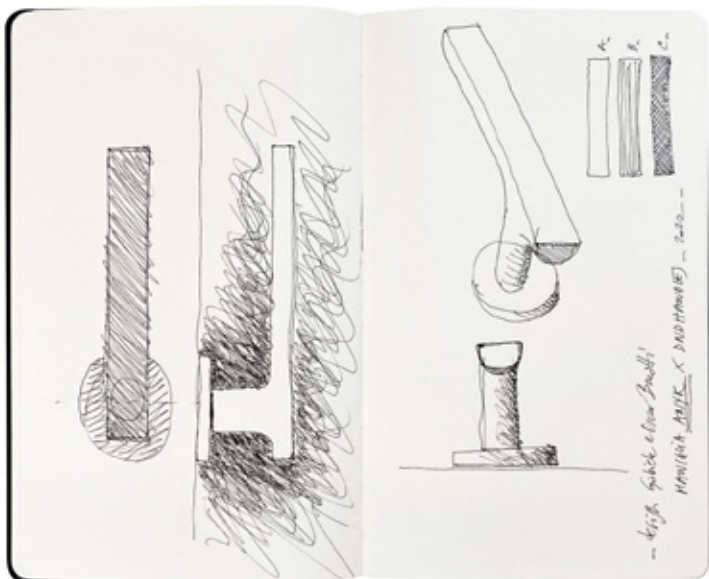
anik brilliant.

gabriele & oscar buratti



Gabriele & Oscar Buratti — the architects behind **Anik Brilliant** — bring a depth of spatial and design experience to hardware design. Their work spans architecture, interiors and object design, blending cultural insight with technical precision, making **Anik Brilliant** a thoughtful addition to both contemporary and transitional interiors.





Solidity and **elegance**, between **simplicity** and **complexity**.

The **Anik** handle is a very simple object and at the same time it is refined, classy and made of details. In its being, it is very complex.



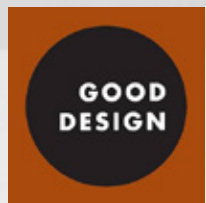


ginkgo.

giulio lacchetti

Inspired by the distinctive silhouette of the **Ginkgo** biloba leaf, the **Ginkgo** collection by **Dnd** transforms natural geometry into a thoughtful architectural detail. Designed by acclaimed Italian industrial designer **Giulio lacchetti**, this range captures the essence of organic form — where surface and structure merge to create a handle that feels both sculptural and intuitive to the hand.

Ginkgo won the 2017 Good Design Award, Hardware category.





leva.

The **Leva** collection by **Dnd** is a refined interpretation of the fundamental lever handle — a design that celebrates both mechanical clarity and material presence. Conceived by the acclaimed architectural studio Park Associati, **Leva** distills the concept of the lever into a harmonious form that feels both composed and confident in use. Its clean, disciplined silhouette evokes the precision of engineered instruments, while the nuanced interplay between planar surfaces and rounded interior contours introduces a tactile warmth into everyday interaction.

Selected ADI Design Index 2023



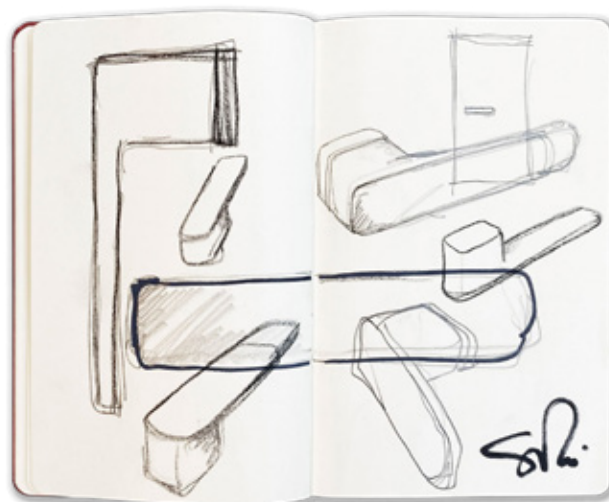
Honourable Mention XXVIII Compasso d'Oro ADI



pluris.

pluris range designed by giulio iacchetti

The **Pluris** range amplifies structural clarity through layered geometry and disciplined form. Designed for versatility across residential and commercial contexts, its expressive yet composed profile brings a sense of layered sophistication to doors and cabinetry.





clear & essential.



A handle with a sharp, clean and essential design finds its shape in a rounded rectangular volume. The escutcheon is contained within the projection of the lever.



luce p.

Luce p is a lever handle engineered around clean, solid geometries and defined by its resolute 90 degree right angles. The design emphasises architectural precision — planes and edges are articulated to capture light and shadow, while the ergonomic grip delivers confidence and tactile balance. With its contemporary language of form, **Luce p** brings a disciplined, modern presence to doors in both residential and contract spaces.



luce p02.

Building on the clarity of **Luce p**, **Luce p02** introduces subtle refinements in proportion and scale for an even more streamlined expression. Maintaining strong right-angled geometry and ergonomic intent, this variant emphasises visual continuity and composure, making it ideal for schemes that prioritise minimalist sophistication and architectural harmony.





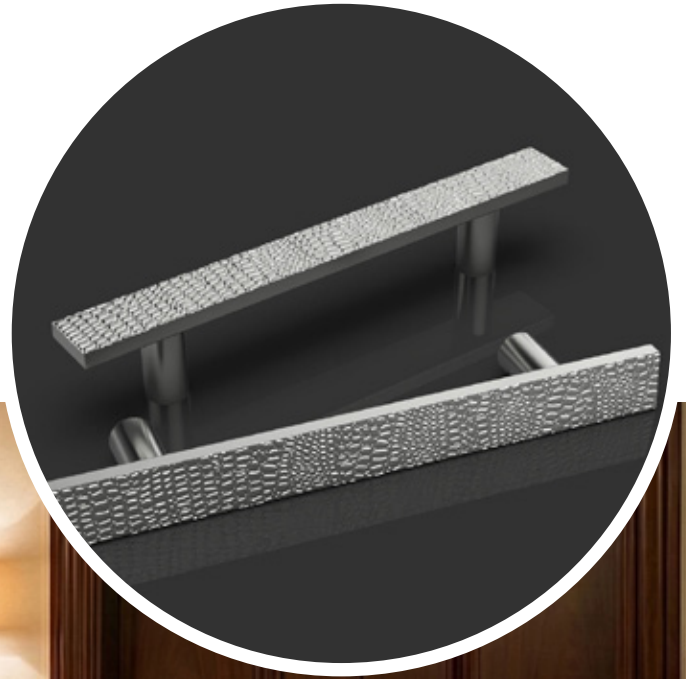
OLIVER KNIGHTS

ARCHITECTURAL HARDWARE

Every piece is meticulously machined, polished, and refined in the UK — celebrating the tactile beauty of high-grade metals and the integrity of expert workmanship. From sculptural lever handles to finely detailed cabinetry hardware, each design balances functionality with quiet luxury, elevating interiors through thoughtful materiality and enduring design.

british craftsmanship refined for modern interiors.

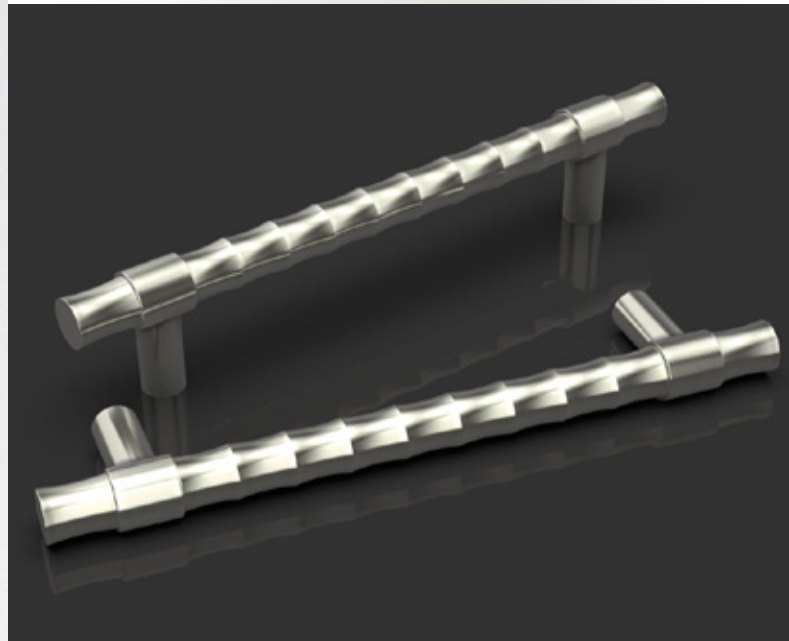
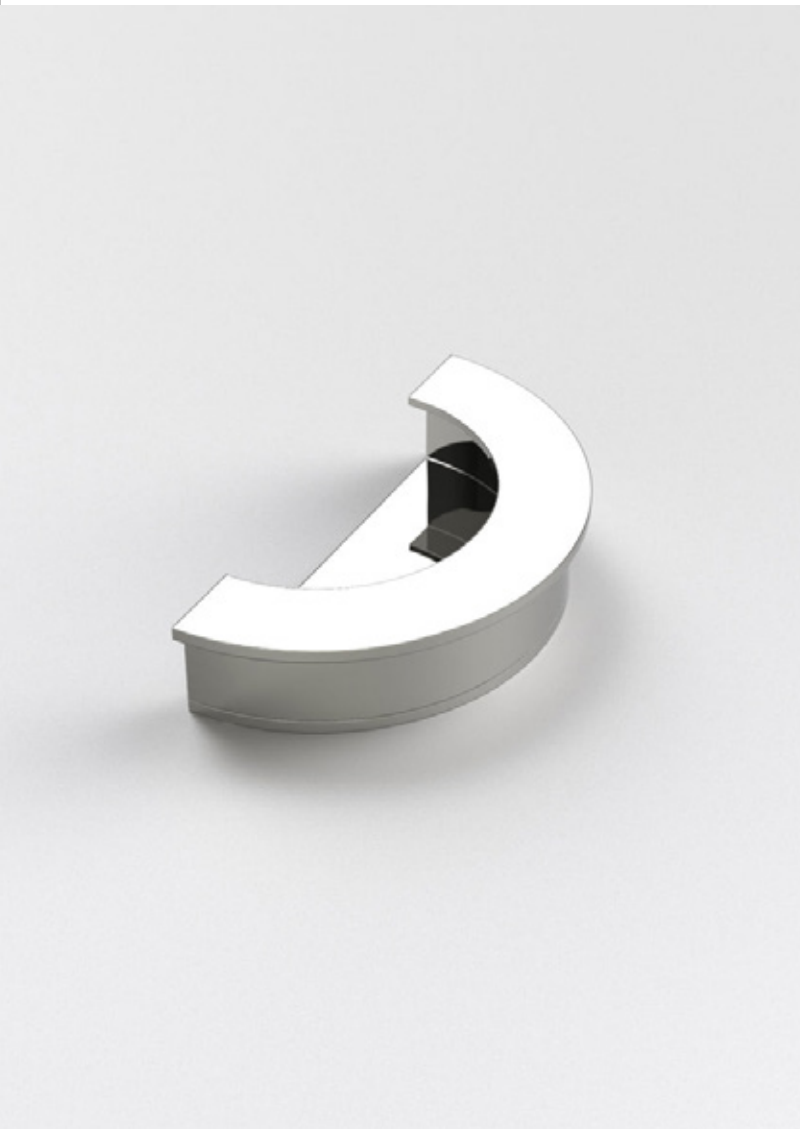
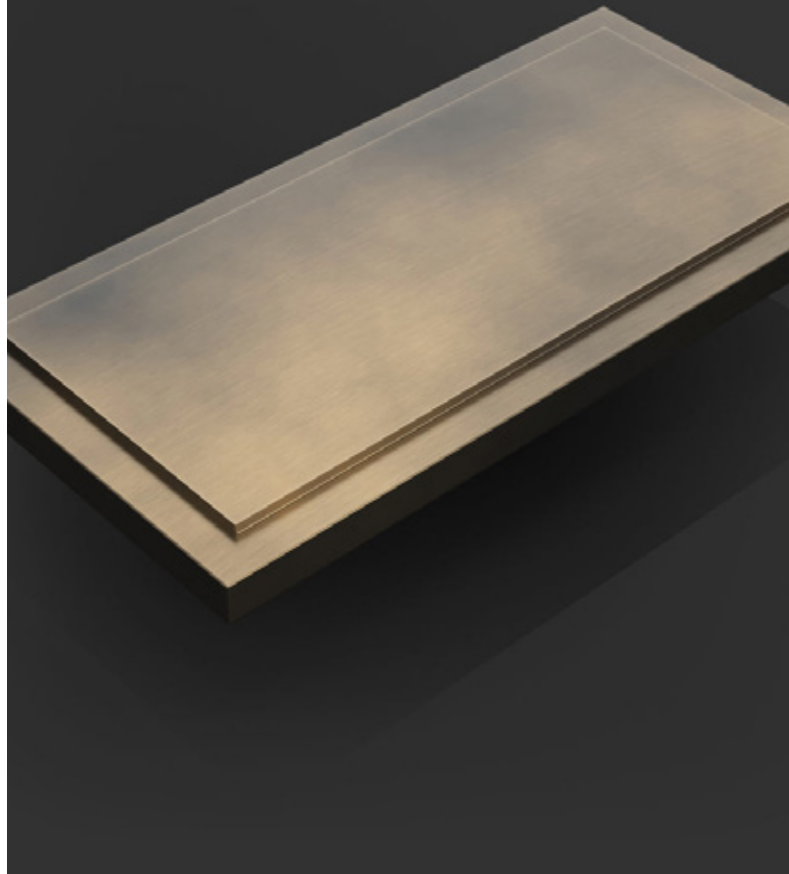
Rooted in British engineering heritage, Oliver Knights creates architectural hardware defined by precision, purity of form, and timeless craftsmanship. Born from a family workshop that evolved from producing aerospace components to mastering solid brass hardware, their collections embody a rare combination of technical excellence and hand-finished artistry. For designers seeking hardware that harmonizes engineering accuracy with contemporary aesthetics, Oliver Knights stands apart as a maker of refined, character-defining details that perform beautifully for a lifetime.

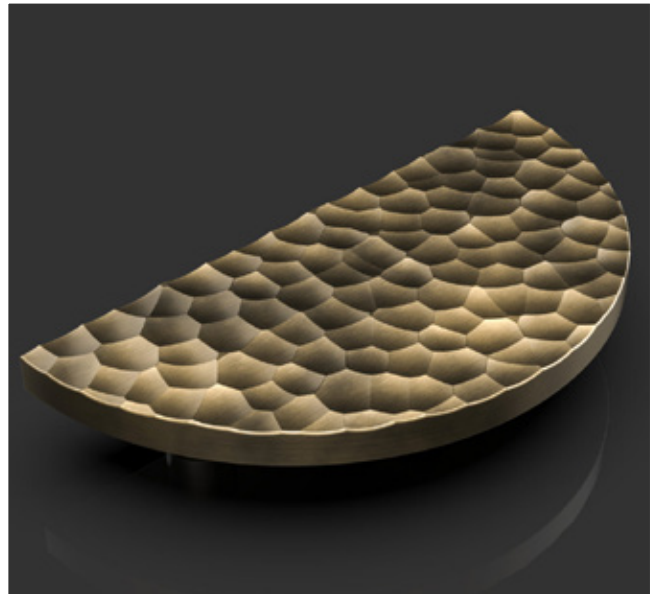
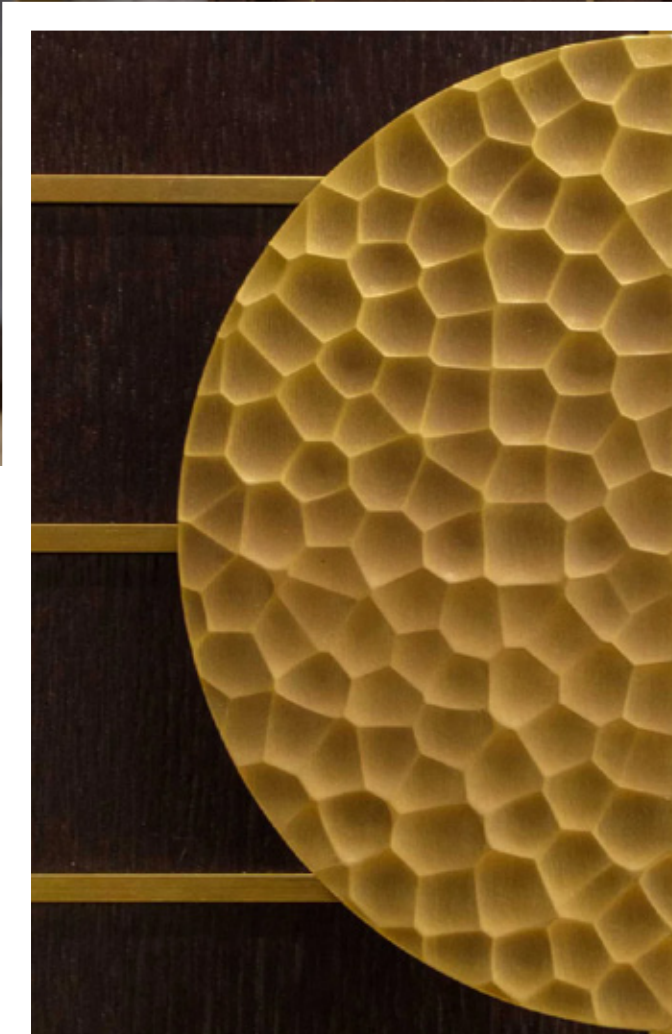


folcard ph.

Crafted in the UK from solid brass, the **Folcard PH** Pull Handle features a clean, architectural profile and confident proportions. Available in multiple lengths and finishes, with bespoke options on request, it delivers refined simplicity and dependable performance.







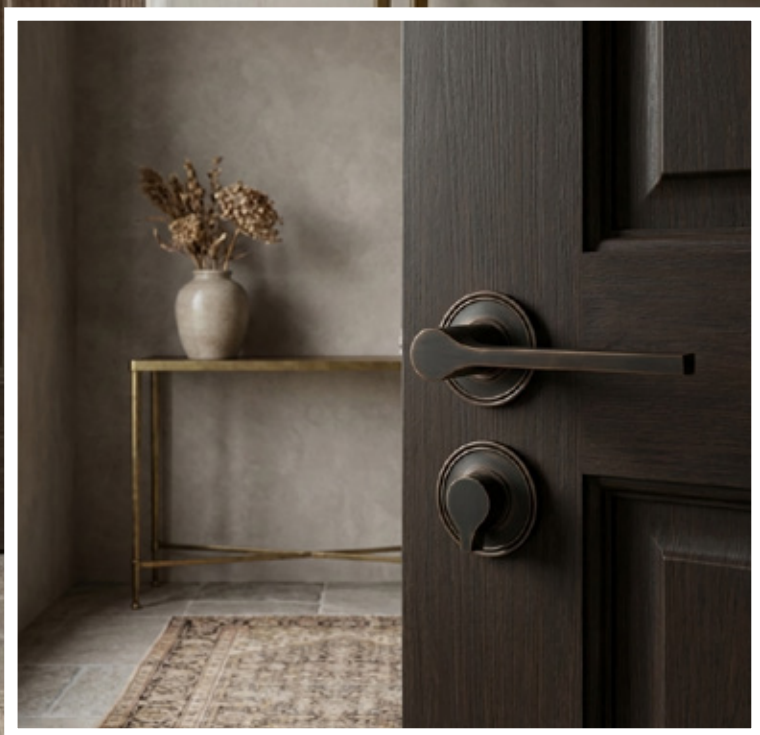
benjamin cp.

Every piece is meticulously machined, polished, and refined in the UK — celebrating the tactile beauty of high-grade metals and the integrity of expert workmanship. From sculptural lever handles to finely detailed cabinetry hardware, each design balances functionality with quiet luxury, elevating interiors through thoughtful materiality and enduring design.



lucan lh.

The **Lucan LH** Lever Handle features an iconic teardrop silhouette, crafted from solid brass and expertly finished for a refined, tactile experience. Available in sprung and unsprung options, and offered in a wide range of finishes, it delivers timeless design, dependable performance, and lasting quality — backed by a lifetime mechanical guarantee.





forged in tradition designed to endure.

With a legacy spanning more than 150 years, Croft stands as one of Britain's most respected manufacturers of architectural ironmongery. Crafted in England using time-honoured techniques, each piece reflects a deep understanding of proportion, material, and enduring design.

From classic levers to contemporary profiles, Croft hardware is defined by precision engineering and hand-finished detail. Solid brass construction, carefully developed finishes, and rigorous quality standards ensure every component performs flawlessly while aging beautifully over time.





CROFT

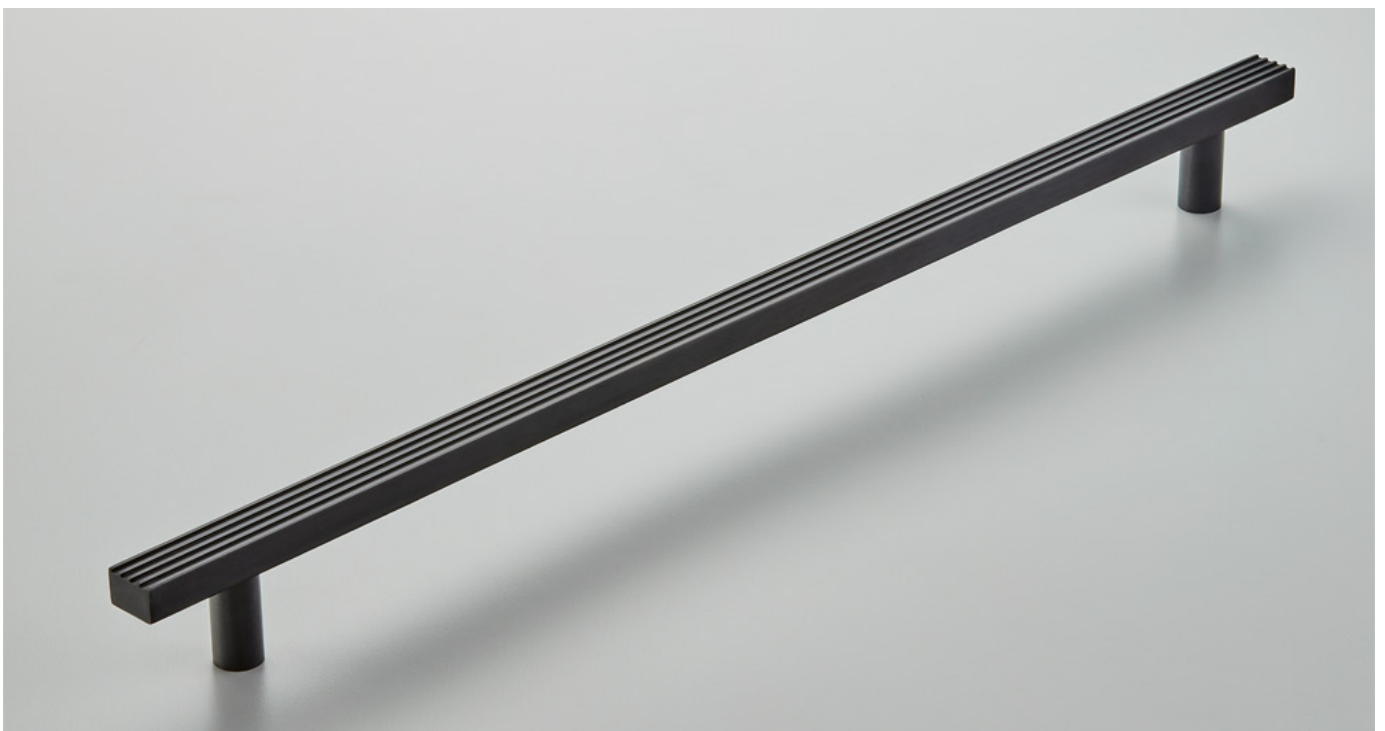






Icon.

The **Icon** Collection brings together Croft's most recognisable designs — timeless forms refined through decades of craftsmanship. Made in England and hand-finished from solid brass, each piece combines enduring style with dependable performance, making it a trusted choice for both classic and contemporary interiors.



lunar.

The **Lunar** Collection is defined by its clean geometry and refined simplicity. Crafted in England from solid brass and hand-finished with precision, **Lunar** offers a modern interpretation of architectural hardware—subtle in form, confident in presence.

Designed to integrate seamlessly into contemporary interiors, its smooth profiles and balanced proportions make it ideal for spaces where restraint and material quality take precedence. Durable, elegant, and timeless, **Lunar** reflects Croft's ability to evolve tradition into modern architectural language.







heritage made contemporary.

With a legacy rooted in British manufacturing, Armac Martin is internationally recognised for producing some of the world's finest solid brass hardware. Designed and made in England, every piece reflects an unwavering commitment to craftsmanship, material integrity, and meticulous detail.

Represented by SANIPEX, Armac Martin's ironmongery collections are curated for designers and architects seeking hardware that complements both classic and contemporary spaces — where heritage craftsmanship meets modern interior expression.



edgbaston.

The **Edgbaston** collection is defined by clean proportions and confident detailing. Its structured silhouette brings a sense of architectural clarity, making it ideal for refined residential and hospitality interiors that value understated elegance with a contemporary edge.



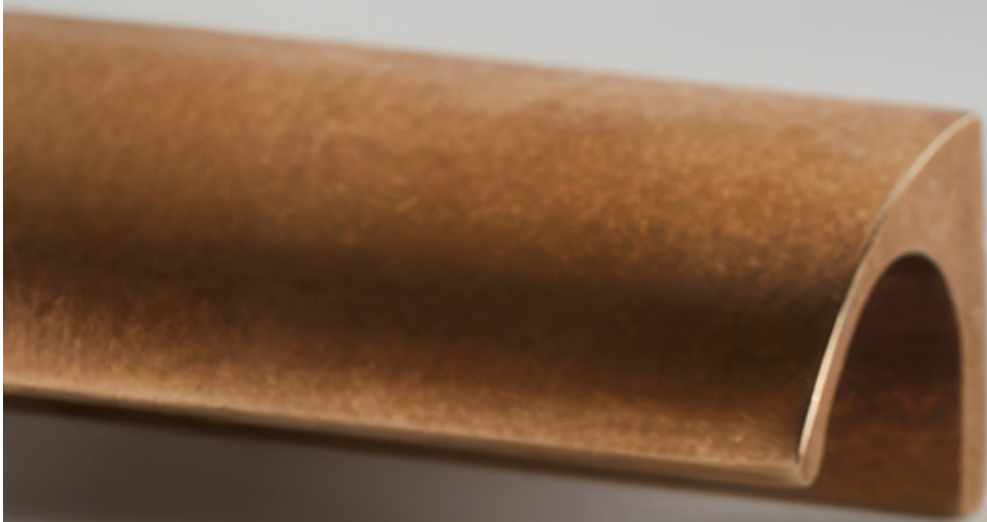
crossways.

With its distinctive intersecting geometry, **Crossways** introduces a subtle decorative rhythm to doors and cabinetry. Designed to feel both expressive and balanced, the collection offers a modern interpretation of classic British detailing.



jaspette.

Delicately expressive yet understated, the **Jaspette** range brings a touch of refined character to interior hardware. Its elegant contours and carefully resolved details make it a versatile choice for interiors that seek subtle personality without sacrificing a cohesive design language.







dougan.

The **Dougan** range balances sculptural presence with refined detail. Its bold profile and confident form create a hardware vocabulary that feels substantial without being overpowering, making it ideal for interiors where presence meets performance. Hand-finished in a suite of distinguished finishes, **Dougan** hardware brings a sense of purpose and permanence to every surface it touches.



kingsheath.

With a nod to heritage proportion and a refined modern sensibility, the **Kingsheath** collection offers timeless design that resonates across architectural settings. Its elegant form language and tactile presence bridge classic and contemporary interiors, making it an ideal choice for designers who value tradition with a modern approach.



carlton.

timeless geometry and crafted sophistication

The **Carlton** collection threads timeless geometry with a quietly luxurious presence. Crafted from solid brass and finished by hand, **Carlton** pulls and knobs integrate seamlessly across traditional and contemporary interiors, offering a refined hardware solution elevated by material and finish.





leebank.

Focused on architectural simplicity and tactile refinement, the **Leebank** range delivers a clean, purposeful profile that complements modern interiors. Its minimal silhouette and thoughtfully considered proportions provide a serene yet resolute hardware expression, making it ideal for projects with contemporary sensibilities.

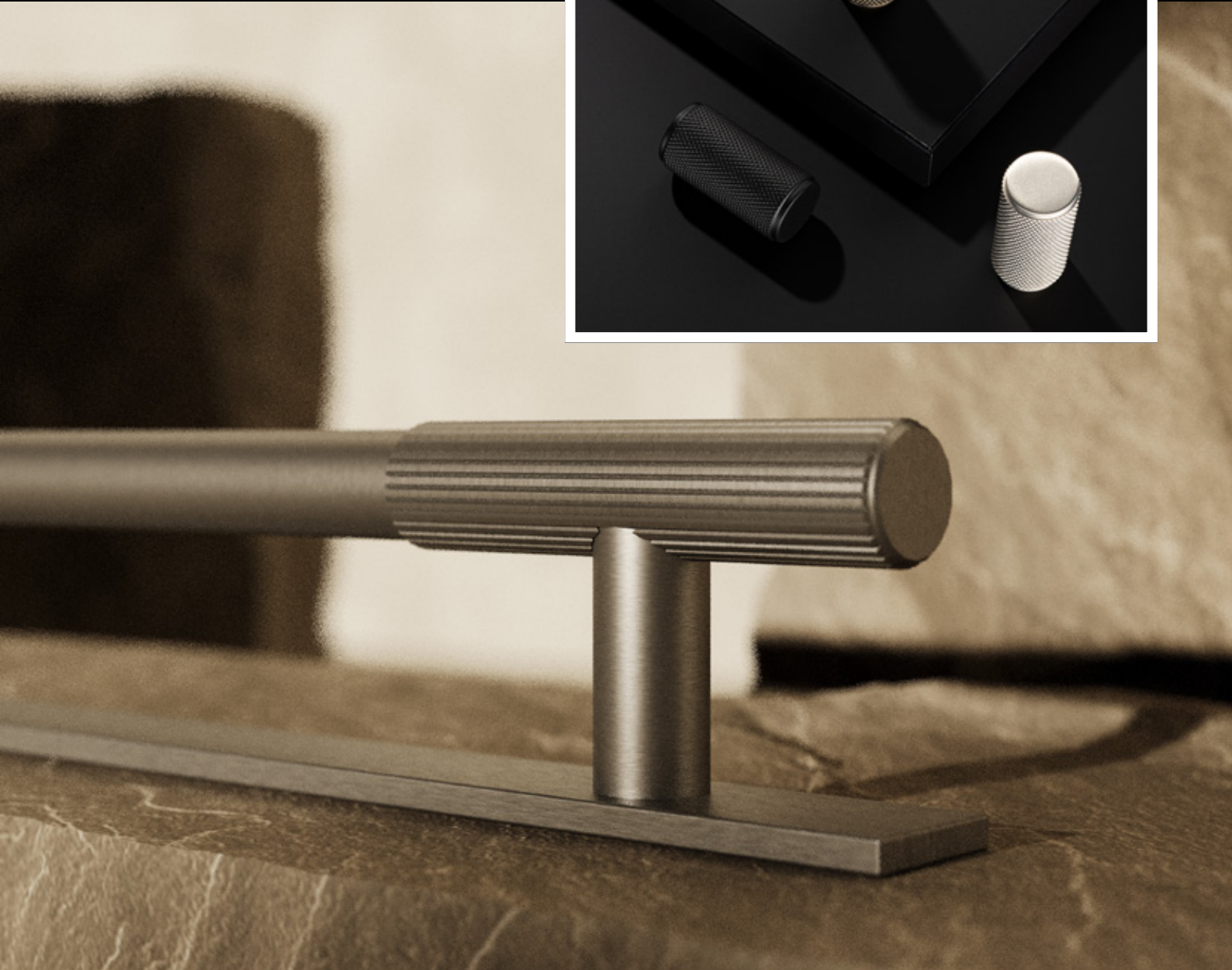


hendel & hendel.

british craft refined for purposeful design

Founded in England in 1971, Hendel & Hendel represents a distinct chapter in British hardware design — a belief that everyday touchpoints should transcend the ordinary and become considered architectural details. With three generations of expertise in design, engineering, and material mastery, their hardware transforms cabinetry into a refined expression of form and function. Designed and manufactured in Lincoln, UK, Hendel & Hendel's collections are built with integrity, precision, and enduring quality, pairing tactile sophistication with lasting performance that elevates kitchen, bedroom, and bathroom interiors alike.













canwick project.

the fitzrovia collection

Throughout the space, the five piece collection curates a transitional approach to traditional cabinetry. The consistent design elements of **Fitzrovia** allow a considered approach to the use of each size. An example of this is the use of the 82mm T-Bar Knob on narrow drawer widths, or the 320mm Pull Handle on wide drawers.



“combining classic and contemporary elements to create a timeless space, this project was a designers’ dream to work on.”







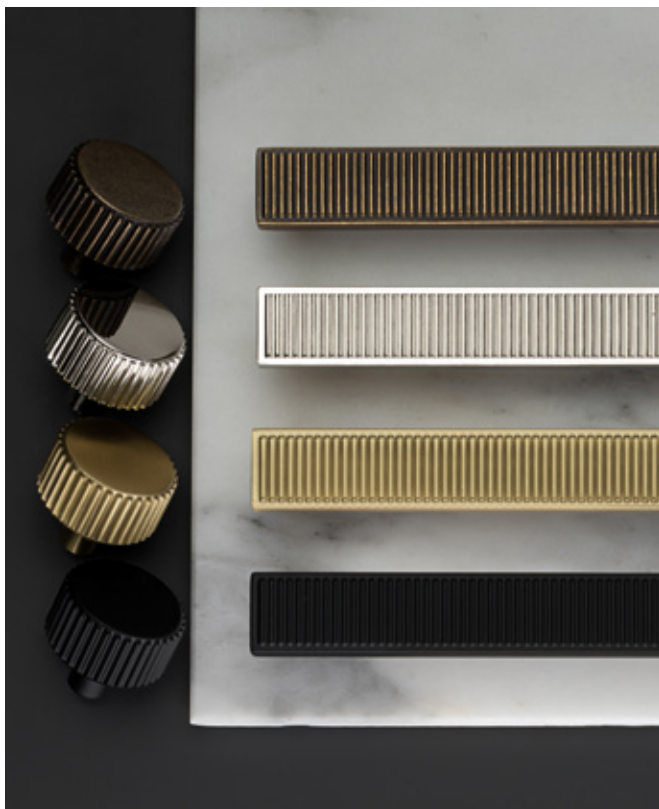
story of **bailgate.**

shaped by the past, made for the present

Inspired by the historic Bailgate district of Lincoln, the **Bailgate** Collection reflects Hendel & Hendel's deep connection to British heritage and place. Drawing from the brand's roots in Lincolnshire, the collection balances a sense of history with contemporary clarity.

Defined by tactile rectangular bars, subtle stepped detailing, and distinctive square clasps, **Bailgate** fuses traditional craftsmanship with modern proportion. Its geometry echoes the rhythm and structure of the Roman roads and architectural foundations that shaped the city's character.





barrington.

This signature cabinet & cupboard handle collection features a striking ribbed texture, taking elements of inspiration from Art Deco design. With its bold industrial flair and fine details, the **Barrington** collection makes a statement.



belgravia.

Each angle of the **Belgravia** knurled brass handle collection has been considered to form the perfect balance of texture. Crafted to exacting standards, the intricate knurling wraps around each of the four pieces to create a cohesive collection that will elevate any interior space.



hoxa.

The **Hoxa** Range introduces a contemporary, knurled detail into the Hendel & Hendel story — its linear, architectural forms offering visual tension and tactile richness. Designed for flexibility across cabinetry applications, this collection bridges modern expression with crafted precision.





trew.

With strong lines and an architectural edge, the **Trew** Range celebrates structural simplicity and material presence. Its profile reads as both modern and enduring, offering hardware that commands attention through its disciplined form and tactile clarity.



HEWI

architectural hardware where design, durability, and inclusivity meet.

Founded in Germany and recognised globally for its uncompromising standards, HEWI is a pioneer in architectural hardware that balances technical performance with timeless design. Renowned for precision engineering, material integrity, and a strong visual identity, HEWI products are trusted across hospitality, commercial, healthcare, and residential environments worldwide.

At the core of HEWI's philosophy lies a commitment to function-led design — hardware that performs flawlessly while enhancing the architectural language of a space. From stainless steel to polyamide, each product is engineered for durability, safety, and longevity, making HEWI a preferred choice for high-traffic and specification-driven projects.





INFORMATION

AFRICAN ART
CONTEMPORARY ART

BAUHAUS DES
SCANDINAVIA

Represented by SANIPEX, HEWI brings German design excellence to projects that demand reliability, clarity, and considered detail — where every interaction matters.

range 270.

The **270X–274X** door handle series represents **HEWI's** most recognisable design language — clean, ergonomic forms engineered for performance and safety. Designed to meet the demands of standard and fire-rated doors, these handles are ideal for commercial, hospitality, and public environments.

Available in satin stainless steel, black matt powder-coated, and Brass PVD finishes, the collection balances visual restraint with technical confidence. Precision detailing and solid construction ensure a reassuring tactile experience while maintaining architectural consistency across spaces.







model 162.

The **162X** and **162PBM** ranges reinterpret functional hardware with a lighter, more refined presence. Featuring mini rose configurations, these handles offer a cleaner visual profile while maintaining HEWI's core standards of ergonomics and durability.



model 111R.

The **111R** range embodies HEWI's iconic approach to colour as a functional design tool. Available in a curated palette — including Pure White, Ruby Red, Steel Blue, Stone Grey, and Jet Black — this collection allows designers to introduce clarity, identity, or wayfinding through hardware.

Manufactured from high-quality polyamide, the **111R** handles are lightweight, robust, and ideal for environments where colour, safety, and consistency play a critical role.



Barbie™ × HEWI

The Barbie™ × HEWI collaboration introduces a playful yet considered design narrative into architectural hardware. Translating HEWI's precision engineering into expressive colour and form, the collection brings character and individuality to interior spaces without compromising on performance.

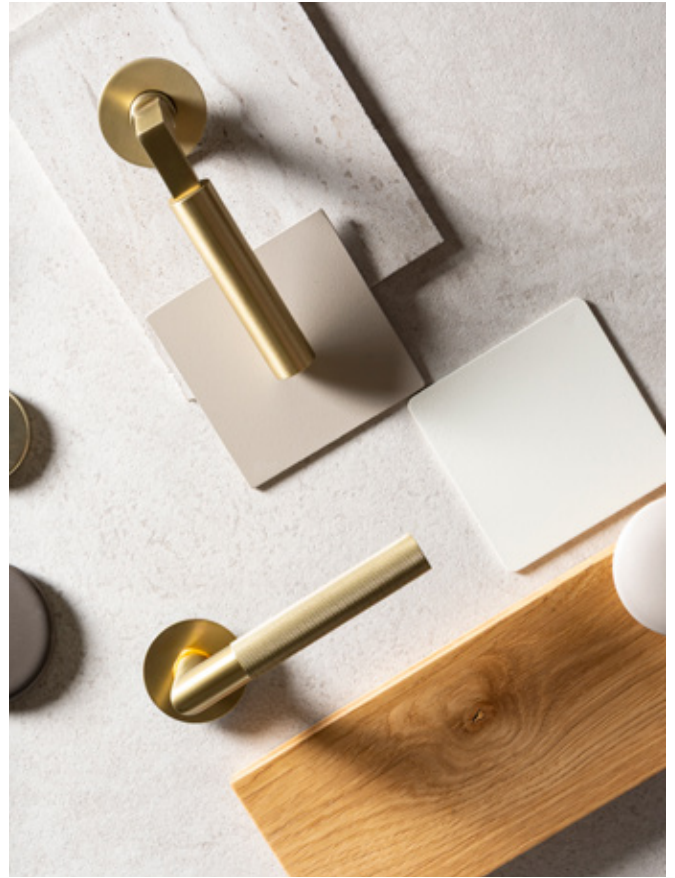
Ideal for select residential, hospitality, and lifestyle-driven projects, the collaboration demonstrates HEWI's ability to merge cultural relevance with functional design.







RICHMOND lever handles.



architectural door hardware

Richmond brings a new dimension to SANIPEX's hardware offering through Consort Architectural Hardware, a specialist that supports architectural ironmongery with certified, performance-oriented door handles and trim. With a comprehensive range designed for education, healthcare, hospitality, commercial and residential projects, Consort merges rigorous specification standards with refined design options.









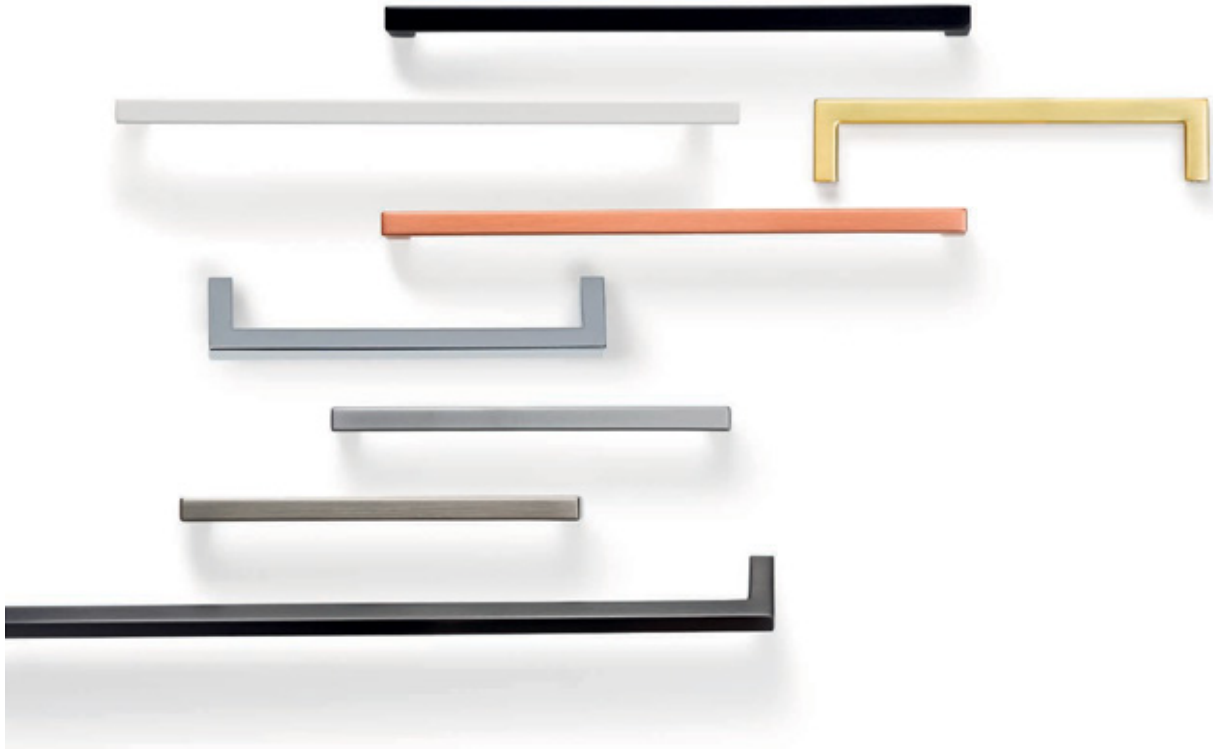
Certified performance meets refined detail in architectural hardware.

The collections spans door handles, pull handles, and complementary architectural hardware, offering consistent proportions, durable materials, and finishes suited to high-use environments. Designed to integrate seamlessly across projects, Consort provides a reliable, cohesive hardware language that supports both design intent and everyday functionality.



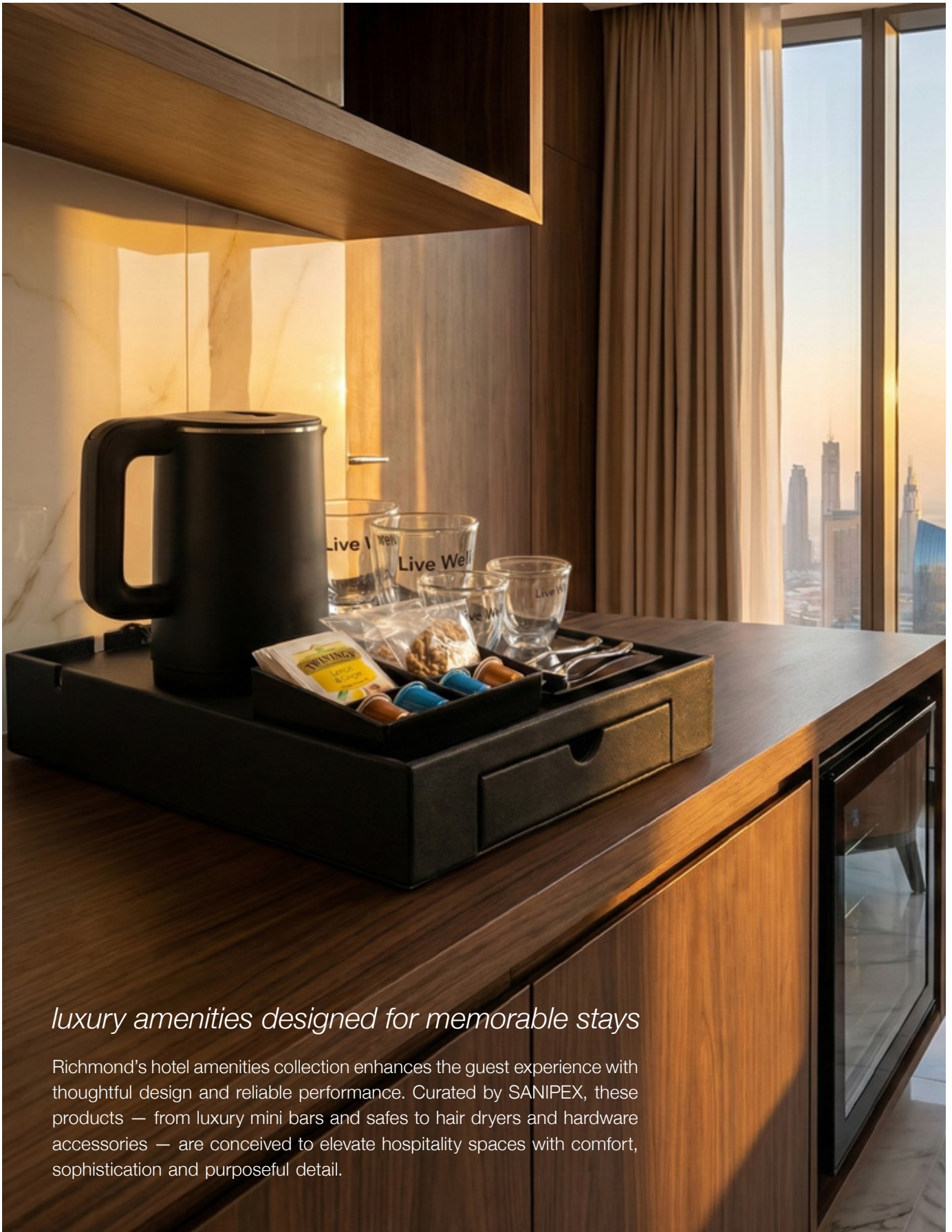






RICHMOND

hotel amenities.



luxury amenities designed for memorable stays

Richmond's hotel amenities collection enhances the guest experience with thoughtful design and reliable performance. Curated by SANIPEX, these products — from luxury mini bars and safes to hair dryers and hardware accessories — are conceived to elevate hospitality spaces with comfort, sophistication and purposeful detail.









“thoughtful
comfort and
purposeful
design for
**elevated guest
experiences.**”





dolphin washroom solutions.

Dolphin stands at the intersection of functional excellence and refined washroom design offering a comprehensive suite of commercial washroom products that work together to elevate daily environments. From touch-free taps, soap and sanitiser dispensers, to behind-mirror wash systems, accessible fittings, hand dryers and complementary accessories, Dolphin provides washroom hardware that feels intuitive, performs reliably, and presents with considered detail.









aquaeco washroom solutions.

Across every AQUAECO washroom, hardware plays a quiet yet essential role in shaping the overall experience. From door and cubicle fittings to grab rails and accessories, these elements bring continuity, functionality, and refined intent to spaces designed for daily use.



digital platforms.

www.sanipexgroup.com
info@sanipexgroup.com



sanipexgroup_official



sanipexgroupofficial



company/sanipexgroup

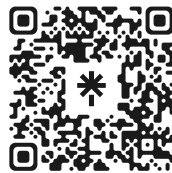


sanipexgroup



sanipexgroup-bagnodesign

shop online
@ sanipexgroup.com



DISCLAIMER

This brochure replaces the earlier brochure. | Product specifications are subject to change without prior notice. | Products are subject to availability. | Pictures are for representation only. | Actual product colours may differ. | Products do not come with accessories. | SANIPEX GROUP cannot be held responsible for any technical errors and reserves the right to make revisions without notice.



OUR SHOWROOMS

DUBAI

BAGNODESIGN
Jumeirah Street, Umm Suqeim 1
+971 4 507 6000
info@sanipexgroup.com

SANIPEX GALLERY
Between Junction 2 & 3, Sheikh Zayed Road
+971 4 507 6000
info@sanipexgroup.com

BAGNODESIGN
Between Junction 2 & 3, Sheikh Zayed Road
+971 4 507 6000
info@sanipexgroup.com

SANIPEX GALLERY
Umm Suqeim Street
+971 4 718 1754
info@sanipexgroup.com

BAGNODESIGN
Umm Suqeim Street
+971 800 2782
info@sanipexgroup.com

BAGNODESIGN - Deira
Salahuddin Road
+971 4 239 7466
info@sanipexgroup.com

SHARJAH

SANIPEX GALLERY
Maleha Road
+971 4 507 6000
info@sanipexgroup.com

AJMAN

BAGNODESIGN
Sheikh Khalifa Bin Zayed Street, Al Rashidiya 1
+971 6 745 1021
info@sanipexgroup.com

ABU DHABI

SANIPEX GALLERY
Waterfront Tower, Al Zahiya St.
+971 2 585 9222
info@sanipexgroup.com

BAGNODESIGN
Al Falah St.
+971 2 585 9759
info@sanipexgroup.com

AL AIN

BAGNODESIGN
Sanaia
+971 3 766 3300
info@sanipexgroup.com

RAS AL KHAIMAH

SANIPEX GALLERY
Sheikh Muhammad Bin Salem Road
+971 7 235 7809
info@sanipexgroup.com

QATAR

BAGNODESIGN - Doha
310 Airport Road, Bldg 332
+974 4 438 0200
info@bagnodesign.qa

BYSTRO - Doha
Showroom 01, Bldg 349, Salwa Road, Ain Khalid Area
+974 5 593 6432
info@bagnodesign.qa

FOR OVERSEAS & PROJECT ENQUIRIES
+971 4 507 6000
info@sanipexgroup.com



WWW.SANIPEXGROUP.COM

SPX-AIH-2026A4-A-WH