



2024  
GENESIS G90



[GENESIS.COM/G90](https://www.genesis.com/g90)

# 2024 GENESIS G90 STANDARD FEATURES

## POWERTRAIN TECHNOLOGY

|   | 3.5T | E-SC |
|---|------|------|
| 3.5L V6 Twin-Turbo GDI engine (375 HP/391 lb-ft) <sup>1</sup>                         | •    | –    |
| 3.5L V6 Twin-Turbo GDI engine with 48V e-Supercharger (409 HP/405 lb-ft) <sup>1</sup> | –    | •    |
| 8-speed Automatic Transmission  | •    | •    |
| Electronically Controlled Suspension with Road Preview                                | •    | –    |
| Multi-Chamber Air Suspension  | –    | •    |
| Rear Wheel Steering   | –    | •    |
| Electronic Parking Brake with Auto Hold   | •    | •    |
| Ventilated Front and Rear Disc Brakes (Silver Calipers)                               | •    | –    |
| Ventilated Front and Rear Disc Brakes (Copper Calipers)                               | –    | •    |
| Drive Mode Select   | •    | •    |
| Rack-mounted Motor Driven Power Steering with Variable Gear Ratios                    | •    | •    |

## ADVANCED SAFETY TECHNOLOGY

|   | 3.5T | E-SC |
|---|------|------|
| Forward Collision-Avoidance Assist            | •    | •    |
| Lane Keeping Assist / Lane Following Assist   | •    | •    |
| Driver Attention Warning                      | •    | •    |
| Blind-Spot Collision-Avoidance Assist         | •    | •    |
| Blind-Spot View Monitor                       | •    | •    |
| Rear Cross-Traffic Collision-Avoidance Assist | •    | •    |
| Parking Distance Warning                      | •    | •    |
| Parking Collision-Avoidance Assist            | •    | •    |
| Safe Exit Assist                              | •    | •    |
| Advanced Rear Occupant Alert                  | •    | •    |
| 10 Airbags                                    | •    | •    |
| Tire Pressure Monitoring System               | •    | •    |
| Tire Mobility Kit (deletes Temporary Spare)   | –    | •    |

## EXTERIOR

|   | 3.5T | E-SC |
|---|------|------|
| 20" Alloy Wheels  | •    | –    |
| 21" Alloy Wheels  | –    | •    |
| Panoramic Sunroof   | •    | •    |
| Power Door Closure  | •    | –    |
| Easy Close Power Doors  | –    | •    |
| Power Hands-Free Smart Trunk with Auto Open                                 | •    | •    |
| Power-folding Electrochromic Outside Mirrors with GENESIS Logo Puddle Lamps | •    | •    |
| High Beam Assist  | •    | •    |
| Rain-Sensing Wipers   | •    | •    |
| LED Headlamps and Rear Combination Lamps                                    | •    | •    |

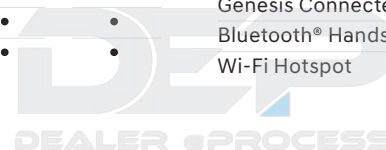
## COMFORT & CONVENIENCE

|  | 3.5T | E-SC |
|--|------|------|
| Nappa Leather Seating Surfaces                                   | •    | •    |
| Matte-Finish Wood Trim   | •    | –    |
| Forged Carbon or Ash Wood Trim with Metal G-Matrix Pattern Inlay | –    | •    |
| Leatherette-Wrapped Upper Instrument Panel                       | •    | •    |
| Microfiber Suede Headliner and Pillars                           | •    | •    |
| Power Seats with Massage Function – Front   Rear                 | • –  | • •  |
| Front Seat Power Bolsters  | •    | •    |
| Heated and Ventilated Front Seats                                | •    | •    |
| Heated   Ventilated Rear Seats                                   | • –  | • •  |
| Heated Power Tilt & Telescopic Steering Wheel                    | •    | •    |
| 3-Zone Climate Control   | •    | •    |
| Mood Curator and Power Rear and Rear Side Sunshades              | •    | •    |
| Smart Cruise Control   | •    | •    |
| Intelligent Speed Limit Assist and Highway Driving Assist 2      | •    | •    |
| Surround View Monitor  | •    | •    |
| Remote Smart Parking Assist                                      | •    | •    |
| Head-Up Display  | •    | •    |
| 12.3" Digital Instrument Cluster                                 | •    | •    |
| Antibacterial Package  | •    | •    |
| Auto-Dimming Inside Mirror with HomeLink®                        | •    | •    |
| Adjustable Interior Ambient Lighting                             | •    | •    |
| Aluminum Door Sill Plates  | •    | •    |
| Acoustic Laminated Windshield + Front and Rear Side Windows      | •    | •    |
| Intelligent Memory System – Rear                                 | –    | •    |
| Rear Seat Vanity Mirrors   | –    | •    |
| 5 USB-C Ports  | •    | •    |

## MULTIMEDIA & CONNECTIVITY

|  | 3.5T | E-SC |
|--|------|------|
| Navigation System with 12.3" HD Screen                 | •    | •    |
| AM/FM/SiriusXM® Radio/HD Radio™                        | •    | •    |
| Apple CarPlay® and Android Auto™                       | •    | •    |
| Bang & Olufsen® Premium Audio                          | •    | –    |
| Bang & Olufsen® 3D Premium Audio                       | –    | •    |
| Active Noise Control                                   | •    | •    |
| Genesis Digital Key                                    | •    | •    |
| Wireless Phone Charger – Front   Rear                  | • –  | • •  |
| Fingerprint Authentication                             | •    | •    |
| Genesis Connected Services                             | •    | •    |
| Bluetooth® Hands-Free Phone and Audio Streaming System | •    | •    |
| Wi-Fi Hotspot  | •    | •    |

<sup>1</sup>Horsepower and torque ratings with premium fuel.



• Standard – Not Available

# 2024 GENESIS G90 EXTERIOR COLORS & WHEELS

MAUI BLACK



VIK BLACK



UYUNI WHITE



MAKALU GRAY



SAVILE SILVER



HALLASAN GREEN



CAPRI BLUE



VERBIER WHITE MATTE



MAKALU GRAY MATTE



## 20" DIAMOND CUT ALUMINUM WHEELS



G90 3.5T AWD

- Machined Finish
- 20" x 8.5J Front Wheels  
20" x 9.5J Rear Wheels
- 245/45R20 (F) & 275/40R20 (R)  
All-Season Tires

## 21" DIAMOND CUT ALUMINUM WHEELS



G90 3.5T E-SUPERCHARGER AWD

- Machined Finish
- 21" x 8.5J (F)  
21" x 9.5J (R) Wheels
- 245/40R21 (F) & 275/35R21 (R)  
All-Season Tires

DEALER PROCESS

# 2024 GENESIS G90 INTERIOR COLORS & TRIMS

OBSIDIAN BLACK



VELVET BURGUNDY & DUNE BEIGE



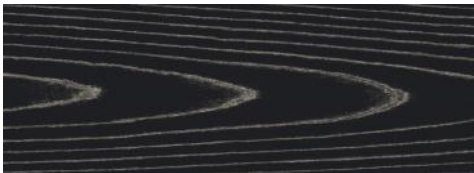
OBSIDIAN BLACK & BORDEAUX BROWN



URBAN BROWN & GLACIER WHITE



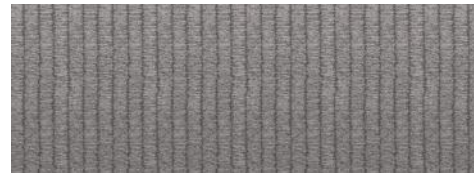
Newspaper Crown Wood



Newspaper Stripe Wood



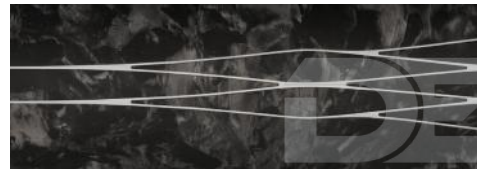
Tailored Wood



Copper Metallic Ash Wood



Forged Carbon with Metal Inlay



Ash Wood with Metal Inlay



# 2024 GENESIS G90 SPECIFICATIONS

## EXTERIOR

|                           |     |          |
|---------------------------|-----|----------|
| Wheelbase                 | G90 | 125.2 in |
| Length                    |     | 207.7 in |
| Width (excluding mirrors) |     | 76.0 in  |
| Height                    |     | 58.7 in  |
| Minimum Ground Clearance  |     | 5.8 in   |

## INTERIOR

|                            |     |              |
|----------------------------|-----|--------------|
| Headroom – Front/Rear      | G90 | 39.4/38.0 in |
| Legroom – Front/Rear       |     | 42.3/37.8 in |
| Shoulder Room – Front/Rear |     | 59.1/57.9 in |

## FUEL ECONOMY

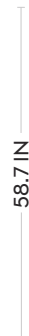
|  |      |      |              |              |
|--|------|------|--------------|--------------|
| All Wheel Drive (city/highway/combined) <sup>1</sup> | 3.5T | E-SC | 18/26/21 MPG | 17/24/20 MPG |
| Fuel Tank Capacity                                   |      |      | 19.3 gal     | 19.3 gal     |

## VOLUME

|                       |      |      |             |             |
|-----------------------|------|------|-------------|-------------|
| Passenger Volume      | 3.5T | E-SC | 109.2 cu ft | 109.2 cu ft |
| Cargo (Trunk) Volume  |      |      | 12.0 cu ft  | 10.6 cu ft  |
| Total Interior Volume |      |      | 121.2 cu ft | 119.8 cu ft |



76.0 IN



58.7 IN



125.2 IN  
207.7 IN

## GENESIS BRAND WARRANTY

|                                       |                                     |  |
|---------------------------------------|-------------------------------------|--|
| POWERTRAIN LIMITED WARRANTY           | NEW VEHICLE LIMITED WARRANTY        | ANTI-PERFORATION WARRANTY              |
| 10 YEARS / 100,000 MILES <sup>2</sup> | 5 YEARS / 60,000 MILES <sup>3</sup> | 7 YEARS / UNLIMITED MILES <sup>3</sup> |

<sup>1</sup>EPA estimates with premium fuel for comparison only. Mileage may vary. Your actual mileage will vary with options, driving conditions, driving habits and the vehicle's condition.

<sup>2</sup>Powertrain Limited Warranty available for original retail owner only. <sup>3</sup>For further details and limitations regarding the Genesis Brand Warranty, contact your Genesis retailer or visit genesis.com.

## GUEST SERVICE VALET

You may never need to set foot in our service center. With our Genesis Service Valet (complimentary for 3 years or 36,000 miles), we'll pick up your vehicle and send a Courtesy Loaner Vehicle, then return your G90 when the scheduled maintenance or warranty repair is complete.<sup>1</sup>

## COMPLIMENTARY MAINTENANCE

Enjoy a worry-free Genesis ownership experience with Complimentary Scheduled Maintenance for 3 years or 36,000 miles, whichever comes first. Complimentary oil changes are also included with normally scheduled maintenance appointments at a Genesis service center.<sup>2</sup>

## GENESIS CONCIERGE

Connect with a Genesis Concierge – through our complimentary personal shopping services – to ask questions, arrange an at-home test drive,<sup>3</sup> request information or check inventory.



<sup>1</sup>Genesis Service Valet is available for original purchaser of the vehicle from Authorized Genesis Retailers during the scheduled maintenance period which includes scheduled maintenance and normal wear, parts replacement or warranty repairs to your vehicle for 3 years or 36,000 miles, whichever comes first. Coverage area varies by retailer. Charges and fees may apply. Contact your Authorized Genesis Retail Service Advocate for details. <sup>2</sup>Genesis Complimentary Maintenance is for 2024 model-year vehicles for factory-recommended scheduled maintenance for 3 years or 36,000 miles, whichever comes first. Ownership limitations and exclusions may apply. See your Genesis Retailer for details. <sup>3</sup>Subject to retailer and concierge availability. May not be available in your area. Please reach out to a Genesis Concierge for details. General Disclaimer: While the information contained in this document is based on the latest information available at the time of printing, specifications and equipment can change. Feature comparisons are based on competitor information available at the time of printing. Although the information contained in this document is believed to be correct, accuracy cannot be guaranteed. No warranty or guarantee is being extended in this document, and Genesis reserves the right to change product specifications and equipment at any time, without notice, without incurring obligations. Some vehicles are shown with optional equipment. Specifications apply to U.S. vehicles only. Please contact your Genesis retailer or visit Genesis.com for current vehicle specifications or details on any of the programs or services listed here.

DEALER PROCESS