

Winchelsea Star

Price \$1

Weekly Winchelsea News

Since 1977

Vol 49 Ed 15

Tuesday 21 April 2026

winchelseastar.org.au



Speed Shear 11 April 2026

\$30,000 raised for the Winchelsea Football and Netball Club! Thanks to the Committee for organising, and Club volunteers and members of our great community who helped out. P35



What's on in Winchelsea - Anzac Day 2026

10:30 am Saturday 25 April 2026

Service and Wreath Laying at the Memorial Grandstand, 70 Hopkins Street, Winchelsea. Wreaths and Flowers are welcome to be laid.

Following the Service, morning tea will be catered by the Winchelsea Football and Netball Club.

Feel free to come around to the Clubrooms next to the Grandstand for a cup of tea, a bite to eat and catch up with friends in our Winchelsea community as we celebrate one of our country's most important calendar dates.

The graves of all veterans in the Winchelsea Cemetery have been marked with a Australian flag during the week.

Subscribe and let us come to you online. Free. Every edition.
<https://winchelseastar.org.au/step/subscribe/>

CONTENTS

COVER

WFNC Speed Shear, Anzac Day Information

FEATURES

Free public transport, then half price	Vic Government	2
Food Bank needs Donations	Kaylene Stocks	6
Stitch It, Don't Ditch It	Winch Craft Group	7
Damien Kelly en route to Geelong	Damien Kelly	7
Growing Winchelsea	Richard Butcher	11
Indian Dinner Pop Up	Rohit	12
Winter Market in Leisure Time Ctre	Winch Comm Market	21
Winchelsea Major Events Group	Elaine Atkinson	21
Project Meow Geelong	Marie McPadden	26
ECO Desination Accreditation	Surf Coast Shire	26

THE ARTS

Arts Rural Tribute to John Bumford	Zinaida Campion	3
------------------------------------	-----------------	---

COOKING

Cooks Corner - Eggplant Receipe	Alice Cloake	5
---------------------------------	--------------	---

SENIOR'S CORNER

Senior Citizens' Club	Elaine Atkinson	2
-----------------------	-----------------	---

YOUNG PEOPLE

Playgroup going to Buttleigh Farm	Winch Playgroup	8
Helen Mary Kininmonth Open Day	HMKK	8
1st Modewarre Scout Group News	Marie McFadden	9
Careers for Young Tradies	HIA	9

COMMUNITY INFORMATION

Community Noticeboard	10
Services and Activities in Winchelsea	17
What's On April/May 2026	18
Advertisers' Phone Directory	22

FUN

Gary Clark, Swamp Cartoon	10
---------------------------	----

HISTORY AND CULTURE

Telegraphic Communications 1873	Michael Donovan	13
---------------------------------	-----------------	----

THE ENVIRONMENT

Transmission of renewable energy	CMC	14
GROUNDLED Sustainable Living	GROUNDLED	14
The Climate Report - COP31	Judy Cameron	15
Pollinators' Course	Wheen Bee	15

CHURCHES

Church Services	23	
Thought of the Week	John Bader	23
Psalms 9	Helen Rolls	23

HEALTH AND WELL BEING

Virtual Hospital Scheme	Vic Government	12
Blood test for Alzheimers	ADN	25
Understanding Palliative Care	PCA	25
Ways for Mums to Recharge	Emily McDonald	25

SPORTS AND EXERCISE

Winchelsea Golf Club	Rachel Boddington	29
Blues News	Janet Fletcher	31
Winchelsea Junior Netball	Shae Callahan	33
Trebeck Parkrun 111	Neil McInnes	35

Free travel, then half price fares

Victorian Government

War in the Middle East continues to push up prices at the pump and put households under pressure. That's why the State Government is slashing the cost of commuting.

The Victorian Budget 2026/27 invests \$432 million to: extend free public transport until the end of May deliver half-price fares from June 1 until the end of the year

Free PT was always a temporary measure to help Victorians right now – and it remains temporary. But the Government is slashing the cost of commuting for the rest of the year, because the impacts of this war will be felt for months to come.

Half-price fares kick in from June 1. Cheaper trains, trams and buses every day, for everyone.

Under half-price fares, a full daily fare will cost \$5.70 to travel anywhere across the state, not \$11.40.

Public transport will remain permanently free for under 18s and other special pass holders.



Seniors' Corner

Winchelsea Senior Citizens Club

Elaine Atkinson

The Winchelsea Senior Citizens Club is a welcoming hub of activity, connection, and good humour in our community. Whether you're looking to learn something new, share a skill, or simply enjoy a chat and a cuppa, there is always something happening.

Activities

Our weekly program offers something for everyone:

- **Monday (1–3pm): Craft and Repairs**
A group of talented members happy to help with repairs for the community. From sewing on buttons and taking up trousers to repairing knitted or crocheted items—even clock and watch repairs—this is a fantastic local resource.
- **Tuesday (10:30am – 12noon): Bridge**
Friendly games with plenty of support for beginners.
- **Wednesday (10–11am): Exercises**
Coordinated by Hesse Rural Health.
- **Wednesday (1–3pm): Cards, games and carpet bowls**, followed by afternoon tea and a raffle.
- **Thursday: We are considering introducing Mahjong (1–3pm)**, with a bring-your-own lunch at 12 noon. Please contact Jean if you're interested.
- **Friday (1–3pm): Cards, games and carpet bowls again**
- Always a lively afternoon!

Jean Shinnars (Secretary/Treasurer) 0427 672 263
jeanshinnars@gmail.com





Zinaida Campion

To share your stories and inspire the community, please contact Zinaida. 0428 403 784 zinaidacampion@gmail.com

John Bumford is remembered with gratitude and affection in the opening concert of the Winchelsea Music Season, at the Globe Theatre. *Editor*

Columnist's Thoughts

Dear people of Winchelsea, as we draw close to the launch of the Winchelsea Music Season at the Globe Theatre on May 2, we remember one of the Globe's most frequent performers, the late John Bumford.

Soprano 1 in Longing, Helen Ling, shares the impact he had on her early career. He had no less an impact on mine, and while I'm confident that without his early influence and laying of the groundwork there would be no WMS, I wish he could be here to see it.

The Winchelsea Music Season exists because people like John had a vision of what this town could become. As the lights rise again in the Globe, I'm reminded that every season begins with a story — and John's is one that continues to echo in the voices he encouraged. It is with gratitude and affection that we honour him here.

Ciao!

A Tribute to John Bumford — Musician, Mentor, Friend

By Helen Ling

What a phenomenon was John Bumford!

I remember John not only as an outstanding pianist and composer, but as the generous, encouraging man who gave me my very first professional singing engagement back in 2011 — an opportunity that opened countless doors and helped shape the career I enjoy today.

We first worked together at a Winchelsea Uniting Church Women's Auxiliary event, thanks to Joan Caldw. At the time, John was running the popular Morning Melodies program at the old Shire Hall. I often attended with my late mother, Ruth Menzel, quietly taking notes and dreaming of the day I might present my own full program.

Zinaida Campion is a classical soprano, vocal coach, artist and model raised in Winchelsea. She is an alumna of VOYCE Victorian Opera, a Windfire Vocal Scholar, Co founder of Cecilia's Daughters, Vice President of Geelong Opera, Artistic Director of the Winchelsea Music Season, and founder of Rural Arts Victoria. A keen arts writer, she has a strong background in languages and a love of local history. She is dedicated to working with the local community, and has an all-consuming passion for promoting the arts in rural areas.



Helen and John performing together, St Paul's cathedral

Up until then, my experience had been limited to singing one or two pieces at concerts or assessments. While valuable, those brief appearances never quite prepared you for the confidence and connection required to carry an entire performance. John changed that. With patience, humour and remarkable musicianship, he helped me bridge the gap between nervous beginnings and genuine stage confidence, and the offers flowed.

John was a joy to work with. He could transpose a song instantly to suit your voice, sight-read anything you placed in front of him, and offer thoughtful guidance on repertoire and program flow. His stories — drawn from a lifetime immersed in music — were legendary. Rehearsals often stretched to several hours, filled with music, laughter and learning.

Our rehearsals took place everywhere: at his home in Winchelsea, at church, at my own home in Werribee, and later at my parents' place in Geelong, where my family eagerly joined us for cups of tea and conversation. As my mother's health declined, John's visits became pastoral as well as musical — a kindness we never forgot.

One of our most moving performances came after John retired from church duties. We presented an Easter program at St Paul's Cathedral, centred on Christ the Shepherd. Afterwards, John quietly shared that he felt it would be his last performance. He sensed his strength fading, and I knew what a gift that final collaboration had been.

Continued over page



Continued from previous page

Over more than a decade, John encouraged me to take bold steps — including beginning a Bachelor of Music at the Melbourne Conservatorium in my early 40s as he had done. We performed together across Victoria, including at the Globe Theatre for his 70th birthday, and in many community concerts, churches and fundraisers. It was a highlight to sing the lead roles in several of his oratorios.

As I prepare to perform at Winchelsea's Globe Theatre centenary celebration with local soprano Zinaida Campion on May 2nd, I do so with deep gratitude. I would not be where I am today without John Bumford's extraordinary musical and personal support. His legacy continues to resonate — in the music, and in the lives he touched.

Longing 2 May 5pm at the Globe Theatre, 17 Willis St Winchelsea. Tickets at the door or via Trybooking, Adult \$50, Concession \$40, School Students Free. Light refreshments to follow, courtesy of the CWA.

M&B WOOD PLUMBING

Call Matt - 0418 319 357
mbwoodplumbing.au

Servicing Winchelsea & surrounds

- General maintenance & blocked drains
- Gas fitting & hot water service upgrades
- New homes & renovations

Country and Waters

SURF COAST SHIRE COUNCIL E-NEWS

SUBSCRIBE HERE



Want to know what's happening across the shire?

From local legends and events to Council decisions and engagement opportunities, our monthly electronic newsletter is the best way to stay across Council news.

Subscribe at surfcoast.vic.gov.au/subscribe

surfcoast.vic.gov.au



WINCHELSEA Osteopathic Clinic

- ✓ Neck & back pain
- ✓ Shoulder pain
- ✓ Headaches
- ✓ Sciatica
- ✓ Sporting injuries



Ph: 5267 2948 | 34 Main Street, Winchelsea (within *The Exchange*) | Book online: winchelseaosteopathicclinic.com.au



Dr. Kale Mazurek

Winchelsea's local independent osteopath for simple & effective musculoskeletal treatments.

0417 114 617

www.kalemazurek.com
osteo@kalemazurek.com

Mon 3:30 pm - 7:30 pm
Thurs 10:15 am - 8:00 pm



Winchelsea Taxis is now Surfcoast Taxis

Our fleet of vehicles are growing to all late models and we are covering an extended area including Winchelsea, Colac, Bannockburn, Inverleigh, Great Ocean Road and Geelong.

We have a fleet of 10 seater Maxi Vans, all with capacity to carry wheelchairs.

Surfcoast Taxis Pty Ltd
All Bookings: 0408 325 992
Fax: 5267 2699
Email: bannotaxis@gmail.com
(Admin or Stan 0429 672 888)
66A Batson Street
Winchelsea 3241



Accounts NDIS provider. TAC, DVA etc

NDIS provider number 4050001044
NDIS provider number 4050001048

Book your next ride with **smarHAIL**

Book Track Pay Rate

Download on the App Store GET IT ON Google Play



This is a place for passionate foodies. Here we celebrate local produce, seasonal ingredients, simple yet remarkable recipes we've tried, tested and loved.

Alice Cloake



If you have a recipe you'd like to share, a local product to shout out or a suggestion for an upcoming ingredient of the month - we'd love to hear from you.

Email editor@winchelsea.org.au.

APRIL Ingredient of the Month

Eggplant



RECIPE:

Baked Eggplant with Tomatoes, Tarragon and Creme Fraiche

From:
Two Good Cookbook

I have to come clean, this is a recipe haven't tried - yet - but it is one I've had bookmarked for a long time in my Two Good Cookbook. My mum however has tried it and it comes with a big tick of her approval. Perfect for these colder days! To note, Organic Canned Tomatoes are a great alternative to fresh ones here.



Ingredients

- 1.5 kg eggplant, trimmed and cut into 1 cm thick rounds
- sea salt and freshly ground black pepper
- olive oil, for shallow-frying
- 50 g unsalted butter
- 1 kg ripe tomatoes, coarsely chopped (or replace with canned tomatoes)
- 4 garlic cloves, thinly sliced
- 400g creme fraiche
- 2 tablespoons finely chopped tarragon
- 2 tablespoons chopped flat-leaf parsley, plus extra leaves to serve
- 2 teaspoons chopped thyme (ideally lemon thyme)
- 1 tablespoon finely chopped chives
- 50 g parmesan, finely grated extra virgin olive oil, for drizzling

Method

1. Lay the eggplant slices in a colander and sprinkle generously with salt. Leave to release the bitter juices for 30 minutes (beads of moisture will appear on the eggplant flesh). Pat both sides dry with a paper towel.
2. Pour olive oil into a large frying pan to a depth of 1 cm and place over medium-high heat. When hot, add the eggplant slices in batches and cook until golden on both sides. Remove and drain on a paper towel.
3. Melt the butter in a medium saucepan over low heat. Add the tomato and garlic and season with a good pinch of salt and pepper.
4. Cook, stirring occasionally, for 15 minutes or until the tomato has softened. Remove from the heat and set aside.
5. Meanwhile, place the creme fraiche in a small saucepan and bring to the boil over medium heat. Simmer gently until reduced by one-third, then remove from the heat. Stir in the chopped herbs and half the parmesan. Season to taste.
6. Preheat the oven to 180°C.
7. Line the base of a large shallow baking dish with a layer of eggplant slices. Follow with a thin coating of the tomato sauce and a sprinkling of parmesan. Continue layering in this way, finishing with the tomato sauce. Pour over the herby creme fraiche and sprinkle with the remaining parmesan. Leave the dish to sit for a few minutes to allow the flavours to get acquainted with each other.
8. Bake for 20-25 minutes or until golden, then remove and stand for 5 minutes or so. Drizzle with a little extra virgin olive oil and sprinkle with a pinch or two of salt. Scatter over some extra parsley and serve ... but not too hot!



Neurologically-Focused, Holistic Family Health Care

Get yours and your families health back naturally
Empower yourselves for life-long health & wellness
Perform and play at your absolute best

  www.onebodychiropractic.com.au
03 52672240 21 Hesse St Winchelsea

Here for your Vitality...





Please donate to the Food Bank, if you can

Kaylene Stocks

Our local Winchelsea Foodbank is currently running low on basic everyday essentials — the kind of items many of us don't think twice about, but that make a huge difference to someone doing it tough.

They're in need of items like deodorant, soap, toothbrushes, sanitary pads, nappies, incontinence products, shampoo and conditioner, dishwashing liquid, laundry powder, toilet paper, sugar, tea and coffee.

Last week, they gave an elderly woman a pack of incontinence pads and she became very emotional. Not because something terrible had happened, but because she finally had something she truly needed and couldn't afford. No one should have to feel that kind of relief over basic necessities.

This is the reality for many people in our community right now.

If you're able to help, even adding just one extra item to your shop can make a real difference. Winchelsea IGA has kindly offered to place a trolley in store for donations, so you can drop items in there while you're shopping.

If you'd like to donate or help out, you can drop donations off on a Friday (closed public holidays) from 12-2pm. Located at 30-32 Hesse Street Winchelsea.

Thank you for supporting our community.

PLEASE HELP WINCHELSEA FOODBANK

They're really low on essentials for those in need...

A local woman was brought to tears after receiving incontinence pads because she finally had something she desperately needed and couldn't afford. No one should have to feel that kind of relief over basic items.

PLEASE DONATE

Deodorant & Soap Toothbrushes & Toothpaste Sanitary Pads & Nappies Shampoo & Conditioner

Toilet Paper, Sugar, Tea & Coffee

Donation Trolley at Winchelsea IGA Message me to arrange a donation

OR:

Thank you for your kindness

The skills you already have, can help you make a positive impact as a Prison Officer.

Discover a rewarding and secure career as a Prison Officer. Apply now and receive an \$8,000 sign on bonus.*



Corrections Victoria

Hiring now

*Conditions apply.



Authorised by the Victorian Government,
1 Treasury Place, Melbourne



The Ripple Effect

Madame Butterfly

A space for the issues that start small but matter deeply—because in every community, even the quietest ripple can create real change.

Corellas in Winchelsea

It is up to us now, as a community, to decide what solutions to the Corella problem would be acceptable and press the Council to implement them. *Editor*

As we wrap up this series on corellas in The Ripple Effect, it's worth being honest about where we've landed.

We've talked about the impact here in Winchelsea — the damage, the noise, the disruption. We've acknowledged the work already being done by Council and others. And we've stepped back to look at the bigger picture across Victoria, including the strategy that lays out what can — and should — be done.

None of this is new anymore.

We understand the problem. We know the options. We know this isn't going away.

So, what's missing?

The community.

Because despite the noise — both from the birds and at times from us — there's been very little follow-through. When the corellas arrive, it's a problem. When they leave, it seems to become someone else's responsibility.

And that's the uncomfortable truth: if we only care when it's inconvenient, we shouldn't expect anything to change.

The Victorian Corella Strategy 2022–2033 is there for anyone who wants to engage. It's not just policy sitting on a shelf — it outlines real, practical pathways, including the full spectrum of responses

from deterrents through to permitted culling. It also makes it clear that lasting outcomes depend on communities being informed, involved, and prepared to stand behind the actions taken.

But strategies don't act — people do.

If there's no community voice, no clear direction, no willingness to engage beyond frustration, then decisions will either stall or be made without you. And when the flocks return — as they will — we'll be right back where we started, having the same conversations, with the same outcomes.

So, this is the line in the sand.

If this issue matters, prove it.

If it doesn't, accept the consequences.

Because doing nothing is still a decision — and right now, that's exactly how it looks.

Every ripple has the potential to build into something bigger. But without momentum, it disappears just as quickly as it started.

What happens next isn't up to Council, or government, or anyone else to solve alone.

It's up to the community.

Every ripple starts somewhere—now it's time to turn ours into a wave that compels more action from council and beyond – this is impacting Rural Australia. What do you say?

Email Letter to the Editor at editor@winchelseastar.org.au

Stitch It, Don't Ditch It

Winch House Craft Group

The Winch House Craft Group may still be on break, but many members are still hard at work. *Editor*

The group is still on break but everyone is still working on their latest project, it will be a fun day next Wednesday as we show our (hopefully) completed pieces. You are welcome to come along to take a look at the varied articles in progress or completed.

This blanket was just about finished when we broke up, it's for a doll's pram and will look gorgeous – lucky doll!



Damien Kelly continues tracking strongly in his epic solo bike ride from Perth to Geelong

Chapter One Advisors

Damien Kelly's 4,000km solo, unsupported cycling journey across Australia has reached another major milestone, with Damien safely completing the Nullarbor Plain crossing and now approaching Adelaide as he continues toward Geelong.

Having departed Perth on 16 March, Damien has spent several weeks on the road, riding an estimated 2,400 - 2,700 kilometres.

The ride is being undertaken in honour of Callum (32) and Jake (31) Robinson, two Australian brothers who, along with their friend Carter Rhoad (33), were tragically killed while travelling in Mexico in 2024. Damien is raising awareness and support for the Callum and Jake Robinson Foundation, a not-for-profit established in their memory to help others "Live Bigger, Shine Brighter and Love Harder".

Supporters can track Damien's journey in real time and contribute to the cause via the Callum and Jake Robinson Foundation:

Live Tracking: <https://share.garmin.com/Damiensride>

Donations: Supporting the Callum and Jake Robinson Foundation, via <https://www.cjrfoundation.com/donate>



Winchelsea Playgroup presents

POP UP PLAYGROUP

30 APRIL 2026 10AM TIL 12PM

BUTLEIGH FARM & EVENTS,
1754 HAMILTON HWY, MURGHEBOLUC

SCAN HERE FOR TICKETS

You're invited!

OPEN DAY

HELEN MARY KININMONTH
Kindergarten

WEDNESDAY
29 APRIL
FROM 4PM TO 5PM

Interested families are invited to attend our open day on:

- BUSH KINDER IN OUR ONSITE NATURE SPACE
- BEAUTIFUL INDOOR + OUTDOOR LEARNING ENVIRONMENTS
- EXPERIENCED, NURTURING EDUCATORS
- A STRONG SENSE OF COMMUNITY

Come and see what makes our kinder special!

nab AFL Auskick

GOOD CLEAN FUN

PLAY.AFL/AUSKICK

WINCHELSEA
Eastern Reserve

Thursdays, 5:00-5:45pm
Season Commence 30th April

Are you ready? Let's NET SET GO!

Join Woolworths NetSetGo, Australia's leading netball program for kids aged 5 to 10. It's where netball begins but the fun never ends!

Why join?

- ★ Learn new skills in a fun, supportive environment
- ★ Make friends and build confidence
- ★ Smaller groups means more learning and more laughing
- ★ Aged-based stages, which are welcoming of all experience levels - everyone can join!

BLUES
WINCHELSEA F.C.

Woolworths **NET SET GO!**

Starts Thursday
24th April 4pm!

Find out more Shae 0409641550

1st Modewarre Scout Group News

Marie McPadden OAM, Group Leader
mcpadden630@bigpond.com



Modewarre Venturer scouts competed in the 74th Hoadly Hide competition, coming in 3rd

Venturer Competition Success

During the school holidays, 118 Venturer Scouts from across Victoria gathered at Blackwood Scout camp to contest the 74th running of the 'Hoadly Hide', a competition of activity bases scored on leadership, communication, teamwork and Scoutcraft.

The theme this year was 'Lights, Camera, Action'. The Venturers hiked between the checkpoint activities which were based around different TV shows. Bob the Builder had them building a bridge. Emergency Animal Rescue saw them abseiling to save a bear then providing first aid while remaining safe. Another base involved decoding instructions from coloured flags and then carrying them out.

The weather was cold and a bit wet, but undeterred, our team of three Modewarre Venturers, Geoff, George and Doug, plus Matt from Highton came in third!



Hoadly Hide pennant



Team of Doug, Geoff, Matt, George

Not having the numbers to run Venturers locally, Modewarre Venturers attend either Torquay or Ninethana (Highton) Venturer Units where they determine and run their own weekly programs, hikes and camps. They also have various weekend and holiday activities they can attend locally, interstate and overseas.

Our Venturers maintain their link with Modewarre. Each week Geoff is a Youth Leader with the Modewarre Cubs. Doug is a frequent supporter of our water activities and George has played the 'Last Post' for the last 4 years of our Anzac Dawn Service. We are very proud of the growth in these young people!

Strong careers open to Tradies, with no HECS debt

HIA

Nothing brings satisfaction like a tradie career

"The knowledge that there will be good employment prospects at the completion of training, provides piece of mind for today's up and coming tradies," said HIA Executive Director Future Workforce, Mike Hermon.

"Recent research from NCVET shows 95% apprentices and trainees move into employment once they have obtained their certificate, with the construction sector featuring strongly.

"Previous studies by HIA estimate the nation needs an additional 83,000 trades to meet our requirements. "Apprentices and trainees need a clear line of sight as to what's next once they have completed their qualification. A career in residential construction provides this.

"Along with strong employment outcomes, an advantage for young people undertaking trades training is that they are not burdened by a HECS debt. Earn while you learn is understandably a big enticement when choosing one's career path as a tradie.

"With work for years ahead and opportunities to embrace modern method of construction and artificial intelligence, career prospects have never been greater.

"But these opportunities don't end there, with Australia's population growing and more of us choosing to move to regional centres the sky is the limit as to where they choose to work, live and play.

"A tradie career can be mapped out years in advance with some specialising in their trade while others use this as a steppingstone to associate careers as a licensed builder, or in project management, site supervisors, estimating, the list goes on."

Mr Hermon noted for apprentices currently undergoing training, entry for the HIA Apprentice Awards 2026 is now open. Visit hia.com.au.

"Winners are given the chance to boost their careers with industry recognition, putting them on the path to a bright future in residential construction," concluded Mr Hermon.





Winchelsea Star COMMUNITY NOTICEBOARD

email editor@winchelseastar.org.au or
leave a note at Winchelsea IGA

WHERE'S OUR LOST CAT?

Ginger Kitten (small cat) named 'Zera'.
Missing from Cooper Street.
Last seen possibly heading towards Cafe
La Hoot. She is microchipped but no collar.
If found, please take to vet
or ring 0478 227 548.

**PINE CONES
FOR FIRE PIT \$5**
Winchelsea Lions Club
Contact Ray 0406 371 239

**PAPER
RECYCLING**
Paper depot rear of
Senior Citizens
Rooms
Harding Street
NEWSPAPERS
MAGAZINES
PHONE BOOKS

 All money raised used
for local community
4224 0226

SEEKING HOUSE HELP

We're looking for a reliable weekly house
cleaner who also happens to love dogs!
No kids, one little pup and a house that we
good use a little help with as two
city-working professionals.
For more information please email
alicecloake@outlook.com

RAM FOR SALE
\$370.00 OBO
Contact Trevor 0410 165 346

1ST MODEWARRE SCOUT GROUP

We have exciting programs
for Joeys, Cubs and Scouts,
vacancies at Joey and Cub levels,
and plenty of room at Scouts.
Marie McPadden
0409 330 147

FOR SALE
UTE CANOPY
FOR DUAL CABIN HILUX
Will accept any offer
Call 52672987
or inquire at Schroeter St plant stand

WINCHELSEA PICKLEBALL
10-11.30am
Leisure Time Centre, Gosney St
Lesley Mathison 0438 672 197

WINCHELSEA MUSIC SEASON CALL FOR VOLUNTEERS ESPECIALLY YOUNG PEOPLE

As we prepare to open the first
Winchelsea Music Season on 2 May,
we're inviting community members -
especially local young people - to be part
of bringing this new arts program to life.

The season launches with Longing,
a concert featuring local performers:
sopranos Helen Ling and Zinaida
Campion, with pianist David Stewart. It will
be held at the Globe Theatre as part of the
town's growing cultural calendar.

Seeking volunteers to help with front-
of-house, door tickets, bump-in, bump-
out, and a quick tidy of the theatre
afterwards. No experience is needed - just
enthusiasm and a willingness to pitch in.

For young people in Winchelsea, this
is a great chance to gain hands-on
experience in event management, meet
professional artists, and contribute to a
project that celebrates our town's heritage
and creative future. Volunteering for the
arts also looks fantastic on resumes and
school portfolios.

The Winchelsea Music Season is built on
community spirit, and we would love to
see local youth at the heart of it.

Anyone interested in volunteering can get
in touch with Zinaida Campion by email
admin@ruralartsvictoria.com.au or via the
Rural Arts Victoria Facebook page.

Thank you in advance. Let's make this a
season created with the community, for
the community!



Used with permission of Gary Clark, Swamp Cartoons

Cartoon Books available online: swamp.com.au



Growing Winchelsea looking to the future

Richard Butcher, Acting Vice President on behalf of the committee Growing Winchelsea Inc



What might the future look and feel like?

Growing Winchelsea Inc. has been quietly getting on with the job, taking time in recent months to reflect on its purpose and plan for the future.

Over this period, the group has been revisiting its mission, goals, and overall direction. While this work is ongoing, it has already sparked fresh thinking within the committee. With several new members coming on board, there's a welcome injection of new ideas, renewed energy, and a shared enthusiasm for what lies ahead.

Winchelsea is set to undergo significant change over the next 20 years, with projections suggesting our population could grow to around 18,500. That's a huge shift for a town that prides itself on its strong sense of community and connection. Growing Winchelsea is committed to ensuring that this growth is managed responsibly and sustainably, protecting what we love while embracing the opportunities ahead.

Central to Growing Winchelsea's work is a focus on its guiding pillars: People, Place, Planet, Participation and Prosperity. These principles help shape decisions and priorities, ensuring that community wellbeing, the character of our town, environmental sustainability, active community involvement, and future long-term economic health all remain front and centre.

Growing Winchelsea continues to support its valued subcommittees, including the Winchelsea Community Market, the Winchelsea Arboretum Trail, the Winchelsea Movie Club, the Train Station Precinct Group, and the Town Planning Committee. These initiatives play a vital role in bringing people together, shaping the township, and enriching community life. Among recent documents compiled by our community in collaboration with the Surf Coast Shire include the 'Arboretum Trail 2024 Concept Plan (2025)', 'A Community Proposal Transforming the Winchelsea Station Precinct (2021)', 'The Winchelsea Community

Action Plan (2023)' and the most recent 'Winchelsea Place Plan (2025)'. Take time to familiarise yourself with these working documents found on the Growing Winchelsea website – www.growingwinchelsea.com

Keep an eye out for updates in the Winchelsea Star from each of these groups.

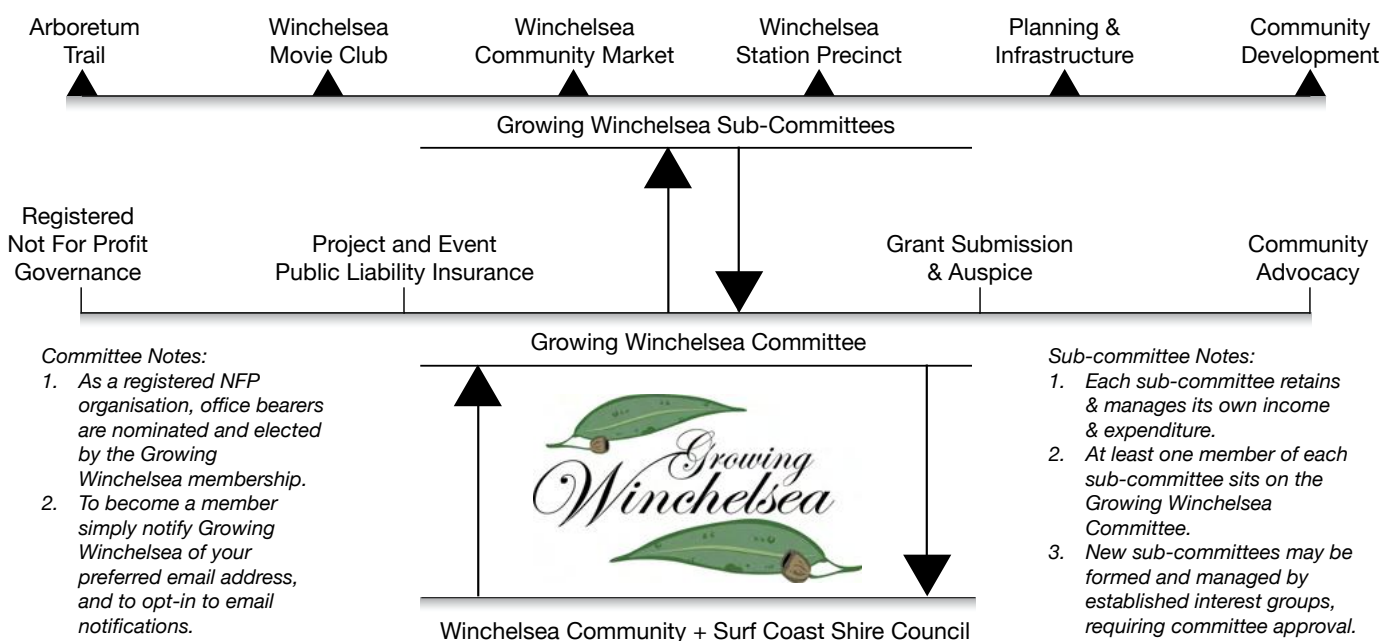
At the same time, the committee is taking a closer look at how we connect with the broader community. With many new residents now calling Winchelsea home, it's become clear that not everyone is familiar with the group's role or the work we do. This is something the committee is keen to change. To help describe what we do, the 'Structure schematic' (below) represents a simplified outline of current Growing Winchelsea operational relationships.

Questions like "Who are we?", "What do we do?", and "How can we better listen?" have been guiding recent discussions. The goal is simple: to be more open, more accessible, and more responsive to the ideas and aspirations of the community whether they're big, bold visions or more immediate suggestions and initiatives.

Two simple initiatives we hope to implement straight up focus on how our community and member meetings are structured. We're proposing to:

1. We propose to open Growing Winchelsea member gatherings with a networking session first up, followed by the more formal minuted meetings. This we hope will allow more informal discussion to be the focus of evolving community deliberations.

Continued next page



Continued from previous page

2. We propose to open the formal Growing Winchelsea Committee meetings to the community, allowing anyone interested in proceedings to sit in on these meetings as observers, in the same fashion as the Surf Coast Shire council meetings operate.

At our heart, Growing Winchelsea is about people. Our committee members bring a diverse mix of experience and expertise, but most importantly, a shared passion for doing the best for our town. That shared passion for Winchelsea is what drives us forward and will keep the momentum going.

Over the coming weeks, readers of the Winchelsea Star can look forward to getting to know the people behind the scenes. We will introduce committee members through a series of articles offering a chance to learn more about the individuals working on behalf of the community.

Keep an eye out for these stories and think about how you might like to get involved. As Winchelsea enters this exciting new chapter, there's plenty of room for fresh voices and new ideas.

Visit: www.growingwinchelsea.com for more information.

Growing Winchelsea Inc
PO Box 43
WINCHELSEA VIC 3241
E: secretary@growingwinchelsea.com
Website: growingwinchelsea.com.au
ABN: 94 639 315 541

Virtual Hospital Pilot scheme has freed up 1000 hospital bed days by treating 250 patients at home

Victorian Government

The Acting Premier has announced the Victorian Virtual Hospital pilot will expand. Led by Austin Health and the Royal Melbourne Hospital. This frees up beds in hospital for patients who need them most as more people can receive care and recover at home. It will now support up to 400 patients by the end of June.

Digital technology is used to deliver better access to safe, high-quality specialist care, with services including:

- Virtual wards – focused on heart failure and post-cardiac surgery patients
- Regional support services – virtual ward rounds and secondary consultations in partnership with regional and rural hospitals
- Virtual foetal medicine – delivered by Royal Women's Hospital to give women in the regions access to timely specialist assessment.
- Patients receive daily care including check-ins, 24-hour support and at-home visits when or if needed.

The Virtual Hospital pilot is also helping to strengthen collaboration between metro and regional clinicians.

Indian Dinner Pop Up

You can sample the delights of Rohit's cooking at the Shire Hall on 1st May. Come along and try it. Your taste buds will be delighted. *Editor*

Hi, my name is Rohit, and I'm passionate about sharing traditional Indian home cooking with my local community. I've been part of the Winchelsea community for the past four years and bring over 25 years of experience in hospitality.

I'm excited to be hosting a special pop-up dinner in the Shire Hall, May 1st from 5.30pm where I'll be serving a selection of my signature dishes. It's a great chance for new people to try my food and experience authentic Indian home cooking.



I started cooking from home to bring authentic, homemade Indian meals to people who appreciate fresh, flavourful food made with care. My dishes are inspired by family recipes passed down through generations, using spices and techniques that reflect true Indian cooking.

Delhi-licious
At the Winchelsea Shire Hall
May 1st 2026
5.30pm - 8pm

Adults \$35
Kids serve \$.17.50

Enjoy a serving of both Butter Chicken and Beef Aloo with aromatic steamed basmati rice, Pappadam and side salad. or vegetarian option, Paneer Masala, Zucchini Sabzi and Homemade syle mixed vegetables.

Finish off with your choice of dessert:
Gulab jamun, Pannacotta or Kheer (Rice pudding)

Drinks available for individual purchase with dinner.

Bookings at: <https://humanitix.com/au>
Email: shirehall@winchhouse.org.au
Phone: 0352672028



Over time, what began as cooking for family and friends has grown into a small home-based business, where I prepare and deliver meals throughout the week. I'm grateful for the support from the community, and it means a lot to see people enjoying the food I love to make.

I look forward to cooking for you!

history of winchelsea

1873 Telegraphic communications come to Winchelsea for the first time

Imagine life without your smartphone. We have come a long way since 1873. *Editor*

Most Winchelsea locals under the age of 40 today couldn't imagine a life without smartphones, and most under 60 could barely remember living without any phones, but for the early settlers of Winchelsea, communication was much slower.

During the gold rush, the main form of communication in colonial Victoria was the post. Colonial post was slow. Letters within the colony were transported by "Cobb & Co" coaches.



Cobb and Co coach

"Cobb & Co" started in 1854 by Freeman Cobb and three fellow American immigrants and reached its peak during the later 19th century when "Cobb & Co" were providing a vast network of passenger and mail coach services extending over thousands of miles throughout Victoria, New South Wales and Queensland.

By 1870, Cobb & Co coach owners were harnessing 6,000 horses a day and covering 28,000 miles of road weekly conveying passengers, mail, gold & general parcels to and from country towns. Mail and luggage was carried in a large boot below the driver's and front passengers' seat, on a rear luggage rack suspended from the back of the vehicle and on the roof.

To get a message from Winchelsea to Geelong, Ballarat or Melbourne would take days, and then days more for the reply to reach back.

Halfway houses were established a day's ride away from Melbourne toward the goldfields and towns such as Meredith, Bacchus Marsh, Werribee (formerly Wyndham), Little River, and Diggers Rest sprang up around the Cobb & Co stops. Horses could be swapped out, fed and watered, drivers could change over and passengers could access food and accommodation between destinations.

To get a message to Sydney could take weeks, and for early colonists to reach their families in Europe, the UK, or other parts of the world could take months or even years.

Australia's first telegraph line, sponsored by the Victorian government, was erected between Melbourne and Williamstown in March 1854 by Samuel McGowan, a recently immigrated Canadian telegrapher, less than 10 years after the opening of the first public telegraph line in the world (1 May 1844).

Telegraph lines expanded from there and radiated out from Melbourne to main towns by 1857, expanding South-West by the 1860s, revolutionising communication in the colonies.

Telegraphic communications came to Winchelsea for the first time in 1873, connecting local rural commerce to Melbourne and regional hubs like Geelong.

The town was served by a Telegraph Office, part of the colonial telegraph infrastructure established in the 1850s and 1860s.

The Winchelsea Telegraph Office officially opened on February 25, 1874 under the charge of Miss Belling. The government made a point of hiring women as post and telegraph Mistresses as part of a shift to create respectable employment opportunities for colonial women while saving on administrative salaries.

Telegraph lines often ran parallel to railway lines and main roads. Winchelsea Telegraph office was connected to the Railway by August 1878.

Winchelsea acted as part of the inland network linking to crucial coastal telegraph stations, such as those that developed along the Cape Otway line in the 1870s. The service was a key component of Victoria's 19th-century "internet," connecting the town quickly to the rest of the colony and, by 1872, to international lines via Adelaide.



Morse code tapping key

Morse Code could send an instant electronic message from one part of the colony to another, in no longer than the time it took to punch out the message. Morse code was a series of dots and dashes which translated to letters, and when the person sending the message hit the button short hits for a dot, or long hits for a dash, the person receiving the message would be trained to understand the beeping of the code and type out the message on a type writer.

Information could be sent to government departments, police, or other sorts of high priority communication to instantly send messages long distances.

Important news could be shared via telegraph to newspapers everywhere in the colony so that editors and publishers could print up-to-date news every day from anywhere in the world.



Micheál P O'Dhonnabháin has lived in the Winchelsea area since 2010.

Michael completed a Bachelor in History and Anthropology and a Master of Cultural Heritage at Deakin University, then went on to complete a PhD at Federation University, focusing on colonial and European collections of Indigenous Australian Cultural Heritage. Michael lectured at Federation and Monash Universities, lecturing in World History, Folklore Studies, Indigenous Studies and literary studies. Michael has worked in museums and cultural collections across Victoria, and can usually be seen in and about Winchelsea with his wolfhound.

Power transmission lines for renewable energy will keep energy costs down in future

Climate Media Centre

Just like roads and plumbing, transmission lines are essential public infrastructure that helps power our everyday lives. The buildout of new transmission across Australia is a crucial piece to replacing unreliable, ageing and failing coal power.

- Building more transmission pushes power prices down. Any delay pushes power prices higher.
- The majority of Australians are comfortable or neutral with living near transmission.
- Accurate information is integral to shaping perception.
- Transmission makes up only a very small part of our power bills.
- There's no evidence of health risks.
- The risk of fire caused by transmission lines is extremely low.
- The risk of fires being started by transmission lines is extremely low, and they are designed and managed to minimise these risks (RE-Alliance).

Stephanie Bashir, Founder and CEO of Nexa Advisory, said: "An energy future that has secure, reliable and affordable power for consumers of all types requires us to get on with the transition.

To get it done we must build the grid scale generation and storage, and connect it. Our research shows that delays to getting on with the transition to renewables, and therefore relying on expensive gas, have cost Australian families and businesses billions, and will continue to do so – in fact as much as \$115.7 billion by 2050, compared to what we call an 'orderly transition'.

Building the transmission is really the missing link. Delays and rising costs of materials mean energy consumers are paying more for the infrastructure (about a third more since 2022) and more for their power in the interim. And, the uncomfortable reality is, that without key transmission lines we will have black outs when the coal-fired power stations fail."

Additional Resources:

- <https://www.climatecouncil.org.au/transmission-lines-explainer/>
- <https://www.climatecouncil.org.au/transmission-joint-statement/>
- Power Games: Who's driving high power bills?, Climate Council 2026

Do you want to be here at this GROUNDED symposium to learn about sustainable farming techniques from experts? Get your tickets now.

GROUNDED Australia

ONLY 2 WEEKS TO GO - GET TICKETS!

In two weeks time, over 80 leading farmers, scientists and food systems experts will gather at Deans Marsh to share critical expertise about transitioning to a more secure, nature-positive, self-sufficient future.

Crowd spilling out of tent

This is the biggest collection of international and national regen food and farming practitioners to ever happen in Australia and it's a unique opportunity for anyone looking for ways to mitigate against future shocks.

The question is, will you be there?

Farmers are doing it tough and feeling very exposed and vulnerable as the price and availability of fuel and fertiliser skyrockets. Consumers are anxious too, of course, but it won't hit home until the ripples hit the checkout and food prices increase - which won't be long.

But we're also hearing from lots of farmers who are starting to ask different questions. What are the options to imported urea? Does low-input farming reduce credit risk? What farming practices could offer more fertility and resilience?

80 sessions, 70 speakers, 20 workshops, 20 stalls, great food, music, a bar, hundreds of great people.

That's what GROUNDED 2026 is all about. Sharing knowledge, skills and expertise to transition us to a healthier, more sustainable future.

Buy tickets now https://groundedaustralia.com.au/event/grounded-festival-2026/?utm_medium=email&_hsenc=p2ANqtz-ica_6VSM-lqLHnhqjib1h_TEq-EBEKNKC4T4JBAE9vayh1UWTOPH6YWhTqpj8NZudsBiRbkCKwvYD8HDB17bnZ2u71z2WK36K5RGtOwfiOJ9YTBM&_hsmi=24665196&utm_content=24665196&utm_source=hs_email

Mowers & Chainsaws

Repairs to all makes and models of ride on mowers, domestic mowers, pumps, chainsaws, brushcutters and small engines.

Trading Hours: Mon - Fri 8am - 5pm Saturday 8am - 12 noon

5267 2266

Cnr Princes Hwy & Lennox St Winchelsea
www.allaboutmowers.com.au
accounts@allaboutmowers.com.au

5234 6585 0417 385 984

For all your domestic & stock water.

Also available for road and civil construction

Local owned and operated.

Fire Danger Period FINISHED NOW

The Fire Danger Period is when CFA restricts the use of fire in the community to help prevent fires from starting.

The Fire Danger Period is NOT the same thing as a Total Fire Ban.

Municipality	Start	End
SURF COAST	24/11/2025	13/04/2026

Find the rules at: <https://www.cfa.vic.gov.au/warnings-restrictions/fire-permits/about-fire-permits>



The Climate Report

Compiled by Judy Cameron

COP31 2026

COP is an international climate meeting held each year by the United Nations. COP is short for “Conference of the Parties,” meaning those countries who joined—are “party to,” in legal terms—the international treaty called the U.N. Framework Convention on Climate Change (UNFCCC). Parties to the treaty have committed to take voluntary actions to prevent “dangerous anthropogenic [human-caused] interference with the climate system.”

What is “dangerous” interference with the climate?

The idea of what is a dangerous amount of global warming is partly a scientific question (what impacts are likely to occur with a given amount of warming) and partly a value judgement (how tolerable those impacts would be). Countries recognized that as warming increased, the risk of impacts that most would consider intolerable would also increase. Based on the science that was available when the UNFCCC treaty was negotiated in 1992, parties agreed that 2 degrees Celsius (3.6 degrees Fahrenheit) above pre-industrial temperatures was ‘an upper limit beyond which the risks of grave damage to ecosystems, and of non-linear responses, are expected to increase rapidly.’

COP31, the United Nations climate conference for 2026, will face multiple geopolitical challenges. But the event may also set the stage for new technology, AI (artificial intelligence), energy and IT service provider developments that improve power management and drive carbon reduction.

COP31 is scheduled for November 9-20 in Antalya, Türkiye will involve a shared leadership model. Türkiye will host but Australia will drive various conference negotiations.

World Meteorological Organisation (WMO) State of the Global Climate 2025

The Earth’s climate is more out of balance than at any time in observed history, as greenhouse gas concentrations drive continued warming of the atmosphere and ocean and melting of ice, according to the World Meteorological Organization (WMO). These rapid and large-scale changes have occurred within a few decades but will have harmful repercussions for hundreds – and potentially thousands – of years.

WMO State of Climate report confirms

- 2015-2025 hottest 11 years on record
- Earth’s energy imbalance is highest in sixty five-year record
- The ocean has been absorbing about eighteen times the annual human energy use each year for the past two decades
- Extreme weather impacts millions and costs billions



The report confirms that 2015-2025 are the hottest 11-years on record, and that 2025 was the second or third hottest year on record, at about 1.43 °C above the 1850-1900 average. Extreme events around the world, including intense heat, heavy rainfall and tropical cyclones, caused disruption and devastation and highlighted the vulnerability of our inter-connected economies and societies.

The ocean continues to warm and absorb carbon dioxide. It has been absorbing the equivalent of about eighteen times the annual human energy use each year for the past two decades. Annual sea ice extent in the Arctic was at or near a record low, Antarctic sea ice extent was the third lowest on record, and glacier melt continued unabated, according to the report.

For the first time, the report includes the Earth’s energy imbalance as one of the key climate indicators.

Full report: <https://wmo.int/publication-series/state-of-global->

A new science-based education program about pollinators is launching in May. The Online Pollinator Stewardship Program is providing the knowledge and skills to help anyone interested in pollination to increase their understanding of managed and wild pollinators.



The eight-week program is a practical, hands-on course with participants learning online and working on real-world projects covering topics such as pollinator identification and monitoring, habitat creation, managed and wild pollination services and pollination impact.

The live Q&A sessions start Wednesday, 6 May and run weekly until Wednesday, 24 June 2026. Reading materials will be available one week before each session.

Register <https://www.whenbeefoundation.org.au/our-work/education/online-pollinator-stewardship-program/>

Winchelsea Star



This week's Edition
Editor Carrie Forgan, Designer Susan Corby



Next Production Coffee Meeting Sat 25 April
9am @ MUD HUT All Welcome!

send your stories
news@winchelseastar.org.au

LOCAL NEWS and ARTICLES
WELCOME

Email news@winchelseastar.org.au
or leave hard copy at IGA supermarket

News Deadline

5pm Fridays
4pm Sundays - hard copy left at IGA
6pm Sundays - sports results and
weekend events

EDITOR 5273 0295

Leave a message

ADVERTISING 5273 0294

advertising@winchelseastar.org.au

free online subscription

www.winchelseastar.org.au

facebook.com/TheWinchelseaStar

production

Editors: Carrie Forgan, Yvonne Stevens, Judy Cameron
Advertising: Sasha Gauntlett, Neil McInnes
Design: Susan Corby, Tony Phelps
Printed by: Cromwell Forganssen,
Winchelsea Community House
Website by: Winch Websites

committee

President: president@winchelseastar.org.au
Neil McInnes
Treasurer: treasurer@winchelseastar.org.au
Cathy Cheadle
Secretary: secretary@winchelseastar.org.au
Tony Phelps
Members: Mick O'Mara, Linda Carter, Susan Corby,
Sasha Gauntlett, Judy Cameron,
Yvonne Stevens, Carrie Forgan



© Winchelsea Star Org. Inc. All rights reserved
Winchelsea Star Organisation Inc.
Reg. No. A0053999F ABN 75 941 529 279
winchelseastar.org.au PO Box 5 Winchelsea 3241
Views expressed are not necessarily those of the
Winchelsea Star or Committee. The Winchelsea Star
reserves the right to edit or not publish any article.
Vectors Freepik.com



Café La Hoot

have you tried
'owl' coffee?

1 willis st cafelahoot@gmail.com 0407 528 999

WINCHELSEA
CONCRETING

• Driveways • Sheds • Decorative Concrete • Raft Slabs

Robert Murphy

☎ 0438 235 237

✉ winchelseaconcreting@outlook.com

DownRyte Excavations



- Excavations
- Drilling and Piling
- Rock Placement
- Tree and Stump Removal



Sean Hunwick

Mobile: 0409 447 288
Email: downryte@activ8.net.au

direct
TEMPORARY
FENCING

FOR HIRE - SUPPLIED & ERECTED - 7 DAYS
GEELONG - BELLARINE - COLAC - SURF COAST
PHONE CAM 0417 310 800

Services & Activities In Winchelsea

<p>VLIN TRAIN SERVICES TO MELBOURNE: Mon - Fri 06.41 (coach) 08.07 11.10 14.04 16.58 19.21 Sat - Sun 08.27 10.27 14.04 16.58 19.17</p> <p>TO WARRNAMBOOL: Mon - Fri 08.58 11.51 14.46 17.28 (coach) 18.42 20.52 Sat - Sun 09.44 11.41 14.46 18.38 20.38</p>	<p>SURF COAST MOBILE LIBRARY Cnr Princes Highway & Hesse St, Fridays 2pm-5pm Parked in Hesse Street (outside Shire Hall) Fridays 2:00 and 5:00pm unless it is a Public Holiday.</p>	<p>WINCHELSEA GIRL GUIDES  All girls 6yrs-15yrs Welcome! Mondays 4.30pm-6pm (school terms) Catholic Church Hall, Harding St Winchelsea <i>Fun, friendship, and adventure. Teamwork, leadership skills, achieve goals, improve communities and grow in confidence.</i> 3 FREE sessions to come along and try. Yvonne 0448 672 630</p>
<p> COUNTRY WOMEN'S ASSOCIATION 7pm second Wednesday of month Winchelsea Senior Citizens' 36 Harding Street Winchelsea</p>	<p>WINCHELSEA PLAYGROUP Every second Thursday 10am-12pm St Thomas Anglican Church Hall cnr Barwon Tce and Hopkins St, Winchelsea Contact: Danni Menzies 0432019944 winchelseaplaygroup@gmail.com Facebook - Winchelsea Playgroup 2019 New families welcome</p>	<p> 1ST MODAWARRE SCOUT GROUP Modewarre Hall, Cape Otway Rd Mon-Cub Scouts 8-11yo 6:30-8pm (sch term) Tues-Joey's 5-8yo 5-6pm (sch term) Wed-Scouts 11-14yo 6:30-8:30pm (sch term) Venturers 15-18yo hosted by Torquay or Highton Units Marie McPadden 0409330147</p>
<p> Winchelsea and District COMBINED PROBUS CLUB Senior Citizens Rooms, 36 Harding Street Winchelsea New members always welcome. Enquiries Lorraine 0417 467 927</p>	<p>WINCHELSEA TRANSFER STATION 55 Cressy Road, Winchelsea Tuesday 2pm-4pm Saturday 1.30-3.30pm Thursday 2pm-4pm Sunday 9.30-12.30pm Closed Christmas Day, but open on other public holidays. www.surfcoast.vic.gov.au/disposalsites</p>	<p>Join us. A role for everyone  Nationally accredited training to help our community. Pop in to meet your crew Wednesdays 7:30pm Winchelsea Unit 325 Mousley Drive 132 500</p>

Winchelsea Men's Shed

For the Community

NEW MEMBERS WELCOME
 Every Wednesday 9.30am
 51 Hesse Street, Winchelsea

KINDLING/OFFCUTS \$7.00 bag
 Pickup Wednesdays 9.30-2.30
 Delivery, Bill 0438 083 373

NESTING BOXES
 Birds/animals

NEED A JOB DONE?
 Woodworking, Furniture Repairs
 Call in Wednesdays to order

Ray Atkinson (Co-ordinator) 0407839139
 winchmenshed@gmail.com


WINCHELSEA MOVIE CLUB

Have you thought about joining the local Movie Club?
 Winchelsea Movie Club enters its ninth year of bringing affordable, entertaining movies monthly to the Globe theatre.

Membership is essential -
 10 screenings annually - \$70 Conc \$65
 5 screenings Autumn /Spring seasons - \$40 Conc \$35

WHEN -
 Movies will be shown third Thursday of each month (except July) at 7.30
 Come early.

WHERE -
 The Globe Theatre
 17-19 Willis Street Winchelsea
 Opp Winchelsea Tavern (Top Pub)

Membership can be paid by CASH on the first night February 19th or by direct debit to bank account.
 Enquiries re bank account details to email - movies@growingwinchelsea.com
 Jenny 0409672054 Sue 0413487915
 Further information about the Movie Club - www.growingwinchelsea.com

Movie List for 2026

- 21.5.2026 Roofman
- 18.6.2026 Gifted Hands
- BREAK
- 20.8.2026 Rachael's Farm
- 17.9.2026 The Book Thief
- 15.10.2026 Mr Burton
- 19.11.2026 My Favorite Cake
- 10.12.26 Thelma

What's on Weekly

MONDAY-FRIDAY

WINCHELSEA TOY LIBRARY

9am-2pm (03) 5267 2028
Winch Community House,
28 Hesse St, Winchelsea

MONDAY-SATURDAY

WINCHELSEA HEALTH CLUB

Accessible - 24 hours
Eastern Reserve, 70 Hopkins St
5267 2336

MONDAY

CO-WORKING AND STUDYING SPACE

Mon and Thurs 9am-2pm \$10
Winchelsea Community House
28 Hesse St, Winchelsea
(03) 5267 2028

MAINLY MUSIC

10-11am (school terms)
Interactive Music 0-4yrs
St Thomas' 25 Barwon Tce 0407838256

WINCHELSEA GIRL GUIDES

4.30pm-6pm (School term)
St John's, Mercer /Harding St
Yvonne Orchard 0448 672 630
Lily Dell Rennie 0428 936 441

1ST MODAWARRE SCOUT GROUP

Modewarre Hall, Cape Otway Rd
Mon-Cub Scouts 8-11yo 6:30-8pm (sch term)
Venturers 15-18yo hosted by
Torquay or Highton Units
Marie McPadden 0409330147

VINYASA YOGA

7pm \$25 Winchelsea Shire Hall,
28 Hesse St, Winchelsea
(03) 5267 2028

TUESDAY



Senior Citizens Centre,
36 Harding St, Winchelsea
Elaine Atkinson 0458 009 616

1ST MODAWARRE SCOUT GROUP

Modewarre Hall, Cape Otway Rd
Tues-Joey's 5-8yo 5-6pm (sch term)
Venturers 15-18yo hosted by
Torquay or Highton Units
Marie McPadden 0409330147

WEDNESDAY

WINCHELSEA ZUMBA DANCE

Combined Zumba Fitness and Gold class.
6:30-7:30pm @The Globe Theatre.
Simone Dunmore: 0468 375 036

WINCHELSEA MEN'S SHED

9.30am 51 Hesse St, Winchelsea
Ray Atkinson 0407839139
winchmensed@gmail.com

SENIOR CITIZENS CENTRE

Wednesdays 1- 3.00 pm
36 Harding St, Winchelsea
Jean Shinnars 52672263, 0427672263
jeanshinnars@gmail.com

MOTHER GOOSE SONG AND RHYME

2pm (School term) FREE
Winchelsea Community House,
28 Hesse St, Winchelsea

WINCHELSEA HISTORICAL SOCIETY

Wednesday 1-4:pm, Friday 10am-3pm
Hesse St, Winchelsea

STITCH IT, DON'T DITCH IT!

9.30-2pm Wednesdays
Winch Community House, Hesse St
SEWING MACHINE and
OVERLOCKER AVAILABLE
Gold Coin donation

KIDS ART and CRAFT SESSIONS

4-4.45pm fortnightly Age 5+
\$15 per session or \$60 term
Winchelsea Community House
28 Hesse St, Winchelsea 5267 2028

WMS
WINCHELSEA MUSIC SEASON
Longing
Helen Ling soprano
Zinaida Campion soprano
David Stewart piano
Will perform a varied programme of soprano repertoire to commemorate the
100TH ANNIVERSARY OF THE
GLOBE THEATRE
As part of the first annual Winchelsea Music Season
Saturday 2nd May 5pm at the Globe Theatre
17 Willis St, Winchelsea, Victoria
Tickets at the door or via Trybooking
Adult \$50 Concession \$40 - School Students Free
For further information
0428 403 784
zinaidacampion@gmail.com

mainly music est. 1990
Fun, Interactive music sessions for
pre-school children (0-4 y.o.) and
parents/caregivers
When: Mondays from 10 to 11 am
(runs during school terms)
Where: St Thomas' Hall
25 Barwon Tce.
To Enquire ring: 0407838256

Winchelsea
Community Market
First Sunday on the Month (except November)
Shire Hall
9am to 1pm
Upcoming Dates:
July 6th Nov 9th (2nd Sunday)
August 3rd Dec 7th
Sept 7th Jan 4th
Oct 5th Feb 1st
Food, Produce, Coffee, Plants, Crafts
Homewares, Candles, Bags, Skincare
Jewellery, Soap + Baby Goods
Stallholders - Contact via Growing Winchelsea Inc Website
(Scroll Down to Market)

April/May 2026

This is a recurring calendar.
Please confirm event details with the organiser/venue.
To add an event to the calendar,
please email news@winchelseastar.org.au

MEL'S DANCE CENTRAL

Winchelsea Dance Classes
Pre-Schoolers - Adults
Wednesday afternoon/evenings
The Senior Citizens Club,
www.melsdancecentral.com.au

CWA WINCHELSEA

7-8.30pm 2nd Wed monthly
Senior Citizens, Harding St
winchelsea.cwa@gmail.com



SES WINCHELSEA

7.30pm 132500
323 Mousley Dr, Winchelsea



1ST MODAWARRE SCOUT GROUP

Modewarre Hall, Cape Otway Rd
Wed-Scouts 11-14yo 6:30-8:30pm (sch term)
Venturers 15-18yo hosted by
Torquay or Highton Units
Marie McPadden 0409330147

THURSDAY

CHAT WITH YOUR COUNCILLOR

Cr Tony Phelps

10am-12pm First Thursday of month
Winchelsea Shire Hall 28 Hesse St,

COWORKING AND STUDYING SPACE

9am-2pm \$10 5267 2028
Winch Community House, 28 Hesse St

WINCHELSEA PLAYGROUP

10am-12pm (School term) \$5
St Thomas Hall, 27 Barwon Tce
winchelseaplaygroup@gmail.com

WINCHELSEA PICKLEBALL

10-11.30am
Leisure Time Centre, Gosney St
Lesley Mathison 0438 672 197

WINCHELSEA KNITTING GROUP

10.30am-12pm FREE
Winchelsea Community House,
28 Hesse St, Winchelsea
(03) 5267 2028 (03) 5267 2028

MAT PILATES

6.45pm \$25 Winchelsea Shire Hall,
28 Hesse St, Winchelsea
(03) 5267 2028

WINCHELSEA MOVIE CLUB

7.30 (3rd Thurs each month)
Globe Theatre, Main St, Winchelsea
[growingwinchelsea.com/project/
winchelsea-movie-club/](http://growingwinchelsea.com/project/winchelsea-movie-club/)

FRIDAY

TAI CHI

9am-10am \$10 5267 2028
Winch Community House, 28 Hesse St

COMMUNITY FOODBANK

12-2pm
30 Hesse St, Winchelsea
0417 848 292

PHONICS WITH ROBOT REG

10.30am (1-3 yrs) 11.30am (3-5 yrs)
(School terms)
www.robotreg.com.au/pages/shae

CHATTY CAFÉ

10.30am-12.30pm, Winch Shire Hall,
28 Hesse St, Winchelsea
Gold Coin Donation 5267 2028

WINCHELSEA HISTORICAL SOCIETY

Friday 10am-3pm
Hesse St, Winchelsea

WINCHELSEA SENIOR CITIZENS

Fridays 1.00 pm - 3.00 pm
36 Harding Street, Winchelsea
Jean Shinnars 52672263, 0427672263
jeanshinnars@gmail.com

GEELONG REGIONAL LIBRARY

(MOBILE) 2-5pm
Old Shire Hall, 28 Hesse Street
0408384331 (During scheduled stops)

DELHI-LICIOUS

1 May 2026 5.30-8.00pm
Winchelsea Shire Hall
Adults \$35, Kids \$17.50
Bookings <https://humanitix.com/au>

SATURDAY

PARKRUN

8am Trebeck Reserve
Sussex St, Winchelsea
www.parkrun.com.au/trebeckreserve/

DIAMOND DOT

Senior Citizens Centre,
36 Harding Street Winchelsea
10 till 4 \$5 entry, \$10 includes lunch
Tracey 0427500649

WINCHELSEA LIONS CLUB IGA BBQs

9 -12pm first Sat of month outside IGA.
Proceeds to IGA Community Chest.

WINCHELSEA LAND AND RIVERCARE

First Saturday of the month 9am
Meet at Guye Reserve, Barwon Terrace
Rod Atone 0428 549318
Stewart Mathison 0428 672054

WINCHELSEA STAR PRODUCTION/COFFEE MEETING

9-11am (Last Sat monthly)
MUD HUT near the River
www.winchelseastar.org.au

WINCHELSEA CROCHET GROUP

1.30pm Every 2nd Saturday \$5
Winch Community House, 28 Hesse St,
Vee 0467 219 227

ST JOHN THE BAPTIST CATHOLIC CHURCH

Mass 5pm each week
Harding St, Winchelsea 0404598558

WINCHELSEA COMMUNITY DINNER

6.30pm last Sat monthly, except Nov/Dec
Hall, Harding St Winchelsea
Bring plate and gold coin donation if you can

SUNDAY

WINCHELSEA COMMUNITY MARKET

9-1pm, 1st Sunday monthly
Shire Hall car park, Main St Winch
[growingwinchelsea.com/project/
winchelsea-community-market/](http://growingwinchelsea.com/project/winchelsea-community-market/)

WINCHELSEA UNITING CHURCH

Service 9.30am each week
Hesse St, Winchelsea 0475 777 301
uca.winchelsea@gmail.com

TRENCHES & HOLES PTY LTD.

GENERAL EARTHWORKS
DRIVEWAYS
TRENCHER
KANGA

EXCAVATOR (3.5T & 6T)
TIPPER TRUCK
ROCK BREAKER
POST HOLES & FOOTINGS

PHILLIP ROBERTSON

PH. 0427 672 945

A.B.N. 74006896898

MRP Steelworx

Matthew Partridge
p 0418 672 334

e mrpsteelworx@yahoo.com.au

Welding Service

- Onsite welding
- Farm maintenance
- Farm machinery & equipment repairs
- Cattle & sheep yards
- Custom built trailers
- Supply & install gates

SOUTH-WEST — PAINTING — GROUP

Contact us:



0431 719 218



www.southwestpaintinggroup.com.au



matt@southwestpainting.com.au

We specialise in:

- New Homes
- Texture Feature Finishes
- New and Old Cabinetry Coatings
- Commercial Projects
- Maintenance Work
- Residential Work
- Wallpapering
- Pre-Sale Painting
- Timber Decking Rejuvenations

M & L DRAYTON PLUMBING SERVICES

REG No 24356 C/A No C02594

- Domestic and Rural Plumbing
- Roofing
- Sewerage & Septic
- LPG & Natural Gas Connections
- Motorised Drain Cleaning
- Backhoe Hire

Phone Mark 5288 7244

PO BOX 98 WINCHELSEA 3241

Mobile 0428 520 142



DRIVEWAYS, CARPORTS, CROSSOVERS,
FOOTPATHS, SHED SLABS, STAIRS
HOUSE SLABS, EXPOSED, SEALING & MORE

CONTACT ALISTER NOW FOR A QUOTE

0411871950

AMACONCRETING1@GMAIL.COM

Inclement weather? No worries. Winter Markets will be held indoors at the Leisure Time Centre

Winchelsea Community Market

Following strong interest from stallholders in a recent Winter poll, the Winchelsea Community Market is pleased to announce a series of indoor market dates at the Winchelsea Leisure Time Centre.

The upcoming Winter markets, from 9am – 1pm will be held on:

- 7 June 2026
- 5 July 2026
- 2 August 2026

These indoor events will provide an opportunity for many more stallholders—particularly those requiring sheltered spaces—to continue trading throughout the colder months without the challenges of unpredictable weather.

This is a positive step for the Winchelsea community, highlighting the market's important role in fostering local connections and supporting small business. Visitors can look forward to a warm, welcoming environment with a diverse range of products on offer. Extensive signage and promotion will be in place along the highway to encourage travellers to stop, explore the market, and experience what Winchelsea has to offer.



Mandala Rocks Anstee



2 favourite mugs Dpots

Stallholders interested in participating are encouraged to either get in touch personally or complete an online registration:
Kim Johnson 0418 566 790 www.growingwinchelsea.com

The Winchelsea Community Market looks forward to welcoming both stallholders and visitors to a vibrant and cozy winter market series.

Winchelsea Community Market
Email: winchelseamarket@gmail.com
Stallholder Coordinator: Kim Johnson 0418566790
Admin: Elaine Atkinson 0458009616
Social Media: Perlita Purcell 0417553929
Facebook: Winchelsea Community Market

Winchelsea House will have oversight of the new Winchelsea Major Events group, as well as Christmas in Winchelsea

Elaine Atkinson

New Chapter for Community Events in Winchelsea

Winchelsea is entering an exciting new era of community connection and celebration, with Winchelsea House announced as the new auspicing organisation for Christmas in Winchelsea and the newly formed Winchelsea Major Events group.

Winchelsea House continues to build on its reputation as a welcoming, inclusive hub where people come together to learn, share, and connect. With a strong focus on community wellbeing, skill-building, and collaboration, the organisation provides an ideal foundation for the future growth of local events.

The establishment of Winchelsea Major Events follows the Future Events 4 Winchelsea Forum held on 11 August 2025 coordinated by Growing Winchelsea, where community members identified a shared vision for strengthening and expanding local events. Bringing this group under the umbrella of Winchelsea House ensures coordinated planning, stronger support, and greater opportunities for community involvement.

Over the coming months, planning will begin for both an expanded Christmas in Winchelsea celebration and the development of a major annual festival for the town. These initiatives aim to:

- Strengthen community connection and participation
- Provide opportunities to learn new skills and volunteer
- Support and enhance existing events
- Encourage collaboration across service clubs, organisations, and local providers
- Build a unified social media presence for Winchelsea events
- Advocate for improved tourism infrastructure
- Increase visitation and local economic activity

This collaborative approach will create meaningful opportunities for residents to engage, contribute and benefit from a vibrant events calendar, while also fostering tourism and supporting new business opportunities linked to events and hospitality.

Winchelsea House and Winchelsea Major Events are committed to building a thriving, connected community where people can network, learn, and have fun together.

Get Involved

Community members, organisations, and businesses are warmly invited to be part of this exciting journey.

For more information or to get involved, please contact:
Elaine Atkinson
Phone: 0458 009 616
Email: eatkinson048@gmail.com

OZ TREES NURSERY & TREE PLANTING SERVICES

- Affordable seedlings—over 200 species
 - Complete plantation service—farm forestry, shelter, aesthetics
 - Deep ripping & mound ploughing. Rotary bed forming
 - Our experienced staff will help you select species for your site conditions and needs
- Also available—tree planting tools, milk cartons, plastic tree guards & bamboo stakes



569 Warrowie Rd. Colac
P: 5233 6280 F: 5233 6393
E: info@oztrees.com.au
W: www.oztrees.com.au
Open Monday—Friday
9am—4:30pm

Phone OzTrees for professional advice,

Water Delivery

WAZZA'S WATER CARTAGE

*Stainless Tanker Up to 22,000 ltr loads
Barwon Water Registered*

Domestic & Rural Water Supplies

Call Wazza
Mob: 0428 877 260
Email: wazza@wazzas.com.au Web: wazzaswater.com

52672192 **R & K Creative Framing**
for all your framing needs

free quotes
pension discount
specialist in Age &
Disability Modifications

Ray & Kim Jansen
10 Witcombe st
Winchelsea 3241

Ray The Home
Maintenance **HANDYMAN**
abn 47928823462

0414672192

Antique Repairs

By **Doug Burns** est. 1976

- All Furniture
- French polishing
- Carving
- Veneering
- Wood Turning
- Porcelain



Unusual Requests Welcome

180 Barwon Terrace, Winchelsea

0428 672 704

ADVERTISERS' DIRECTORY

ACCOUNTANT

STS Accounting 5267 2673

AGRICULTURAL

Southern Grain 5267 2351

ANTIQUES

Antique Repairs 0428 672 704

AUTOMOTIVES

SJR Automotive 0423 413 829
Winchelsea Auto 5267 3001

BANK

Bendigo Bank 5267 3189

BUILDERS

Alford Built 0408 583 362
Lupton Builders 0438 840 104
MGT Building 0409 433 687

CAFE

Café La Hoot 0407 528 999

CHIROPRACTOR

One Body 5267 2240

CHURCHES

Anglican 0448 687 588
Catholic 0477 672 042
0404 598 558
Uniting 0475 777 301

CLUBS

Girl Guides 0448 672 630
Golf 5267 2660
Lions 4224 0226
Movie 0409 672 054
Probus 0417 467 927
Scouts 0409 330 147

COMMUNITY

Community House 5267 2028
Foodbank 0417 848 292
Mainly Music 0407 838 256
Men's Shed 0407 839 139
Playgroup 0432 019 944
RSL 0488 165 109
Senior Citizens 0427 672 263
Toy Library 5267 2028

CONCRETERS

AMA Concreting 0411 871 950
Vince Concreter 0412 840 704
Winchelsea Concreting 0438 235 237

DANCE

Mel's Dance 0400 874 338

ELECTRICIAN

Green Lead Electrical 0467 097 101

EMERGENCY

Police 5267 2025
SES 132 500

EXCAVATORS

DownRyte Excavations 0409 447 288
Trenches & Holes 0427 672 945

FENCING

Direct Temporary 0417 310 800

FRAMER

R&K Creative Framing 5267 2192

FUNERAL

Tuckers Funeral 5221 4788

FURNITURE

Worpel Custom 0439 013 145

GYM

Sunny Gym 0401 417 387

HEALTH SERVICES

Hesse Rural Health 5257 1200
Winchelsea Medical 5292 8028

HIRE

Colac Hire 5232 1177
Tip Truck Hire 0412 840 704

LAWYER

Wightons Lawyers 5221 8777

MOWERS

All About Mowers 5267 2266

NURSERIES

Oz Trees Nursery 5233 6280

OSTEOPATHICS

Dr Kale Mazurek 0417 114 617
Winchelsea Osteo 5267 2948

PAINTER

South-West Painting 0431 719 218

PLUMBERS

M&L Drayton 0428 520 142
M&B Wood 0418 319 357
Simco Plumbing 0400 643 976

QUARRIES

RAK Davis & Sons 5267 2094

REAL ESTATE

Charles Stewart 5231 5400
HF Richardson 5229 8017

SCHOOL

Primary School 5267 2134

SHIRE

Surfcoast Shire 5261 0600

SPORTS

Park Run 0408 102 802
Pickleball 0438 672 197

STEELWORK

MRP Steelworx 0418 672 234

STORAGE

Storage King 5267 3116

SUPERMARKET

IGA 5267 2676

TAXIS

Surfcoast Taxi 0408 325 992
Winchelsea Taxi 0429 672 888

VET

Colac Vet 5232 1792
Moriac Vet 0447 781 089

WATER

Water Supply Specialists 5231 1861
Wazza's Water Cartage 0428 877 260

Winchelsea Churches



Winchelsea Uniting Church

0475 777 301
uca.winchelsea@gmail.com
Hesse St, Winchelsea 3241
Services 9.30am Sundays

St John the Baptist Catholic Church

0404 598 558
Father Joseph Panackal
Harding St, Winchelsea 3241
Mass 5pm Sat. APRIL 25
MAY 2, 9, 16, 23

St Thomas' Anglican Church

0448 687 588
Rev Christopher Duff
Barwon Tce, Winchelsea
Service 10am Sundays

Thought of the Week

"When we forgive, correct others with love, and pray according to His word. We act with heaven's backing. What we allow or refuse on earth, should reflect God's truth, not our emotions. It calls us to live carefully, speak wisely, and pray with confidence. Knowing our obedience matters and connects earth with heaven."
Have a Blessed week.

John Bader
(Christian Pastoral Carer)

Psalm 9

*I will praise you, Lord, with all my heart;
I will tell of all the wonderful things you have done.
I will sing with joy because of you.
I will sing praise to you, Almighty God.
My enemies turn back when you appear;
they fall down and die.
You are fair and honest in your judgments,
and you have judged in my favor.
You have condemned the heathen and destroyed the wicked;
they will be remembered no more.
Our enemies are finished forever; you have destroyed their cities,
and they are completely forgotten.
But the Lord is king forever;
he has set up his throne for judgment.
He rules the world with righteousness;
he judges the nations with justice.
The Lord is a refuge for the oppressed,
a place of safety in times of trouble.
Those who know you, Lord, will trust you;
you do not abandon anyone who comes to you.
Sing praise to the Lord, who rules in Zion!
Tell every nation what he has done!
God remembers those who suffer; he does not forget their cry,
and he punishes those who wrong them.
Be merciful to me, O Lord!
See the sufferings my enemies cause me!
Rescue me from death, O Lord,
that I may stand before the people of Jerusalem and
tell them all the things for which I praise you.
I will rejoice because you saved me.
The heathen have dug a pit and fallen in;
they have been caught in their own trap.
The Lord has revealed himself by his righteous judgments,
and the wicked are trapped by their own deeds.
Death is the destiny of all the wicked,
of all those who reject God.
The needy will not always be neglected;
the hope of the poor will not be crushed forever.
Come, Lord! Do not let anyone defy you!
Bring the heathen before you
and pronounce judgment on them.
Make them afraid, O Lord; make them know that they are
only mortal beings.*

Good News Translation



WORPEL CUSTOM FURNITURE

- BESPOKE TIMBER FURNITURE
- TIMBER VANITIES
- BARNDOORS
- KITCHEN, BATHROOM & WARDROBE JOINERY
- REPAIRS & RESTORATION

0439013145

worpelsam@yahoo.com.au

25A Alsop Drive Winchelsea



Knuckey's Winchelsea Ph: 5267 2011

Knuckey's have in stock a complete range of batteries to suit tractor, heavy machinery, cars, utes

The largest range of the best oil for your vehicles—**CASTROL**—
'when only the best will do'

The largest range of V belts.
A, B, C, D M Sections
Bolts and nuts for all occasions
Steel cut to size

TIP TRUCK HIRE

- * **FRONTEND LOADER
4 IN 1 BUCKET**
- * **DRIVEWAYS
LEVELLED OFF**
- * **RUBBISH REMOVAL**
- * **GRASS SLASHING
& RIDE ON
MOWER JOBS**

VINCE

0412 840 704



SOUTHERN GRAIN STORAGE PTY. LTD.

AG SUPPLIES FERTILISER GRAIN STORAGE SEED CLEANING

(03) 5267 2351



Winchelsea Supermarket

Trading Hours

Monday to Saturday

8.30am to 7.30pm

Sunday

10am to 7pm

Ph: 5267 2676

29 Main St, Winchelsea

CONCRETER

- * **DRIVEWAYS**
- * **FOOTPATHS**
- * **KERB & CHANNEL**
- * **GARAGES & SHED SLABS**
- * **STEPS**
- * **WHEELCHAIR RAMPS**
- * **VERANDAHS**
- * **PATIO AREAS**
- * **PLAIN OR COLOURED
CONCRETE**
- * **CONCRETE CUTTING
& REMOVAL**

VINCE

0412 840 704



DANCE CLASSES

TAKING ENROLMENTS NOW
FOR OUR WINCHELSEA STUDIO

PRE-SCHOOLERS - ADULTS
CONTROLLED CLASS SIZES
JAZZ - THEATRICAL TAP - CLASSICAL BALLET
HIP-HOP - CONTEMPORARY DANCE

ENROL TODAY

WWW.MELSDANCECENTRAL.COM.AU

Blood tests closer for Alzheimer's disease?

Australian Dementia Network

Utilising its networks of GPs across three states, ADNeT intends on combining digital cognitive tests and blood tests (pTau217 AD) for a large-scale study of people at risk of Alzheimer's Disease.

Dementia is one of Australia's greatest public health and economic challenges with more than 400,000 Australians living with dementia. It is the leading cause of death in Australia and about three quarters of people with dementia have Alzheimer's disease.

Current testing shows signs of Alzheimer's Disease can be detected in the brain up to 20 years before symptoms emerge.

ADNeT Director, Prof Christopher Rowe said "There are currently a small number of locations in Australia using blood tests to rule out Alzheimer's with more accurate tests expected to be available later in the year. This pilot brings forward the opportunity to one day have the combination of cognitive and blood testing available to Australians across the country.

"This would have transformative benefits for our society with earlier diagnosis and intervention leading to people at risk of or with early onset Alzheimer's leading happier, more productive and fulfilling lives. It also has the potential to save the Australian Government billions of dollars in healthcare costs."

For more information, go to <https://www.australiandementianetwork.org.au/>.

How mums can feel better without adding more to their plate

Simple ways to recharge

Dr Emily McDonald One Body Chiropractic

Mother's Day is a beautiful reminder to celebrate the women who give so much of themselves every single day. Mums are often the backbone of the family - juggling work, home life, kids' schedules, and everyone else's needs.

But in the middle of taking care of everyone else... who's taking care of Mum?

One of the most common things I see in practice is women pushing through fatigue, tension, and pain because they feel like they "don't have time" to deal with it. What starts as mild stiffness or low energy can slowly become chronic headaches, poor sleep, or burnout.

The truth is - your body keeps score. And small, consistent habits can make a big difference. Here are a few simple ways mums (and really, anyone) can start looking after their health better:

1. Start your day without your phone
Before diving into messages or social media, give your body 10-15 minutes to wake up naturally. Stretch, breathe, or step outside for fresh air. This helps regulate your nervous system and sets a calmer tone for the day.
2. Prioritise gentle daily movement
It doesn't have to be intense. A 20-30 minute walk, some light stretching, or even getting up and moving regularly throughout

Understanding Palliative Care

Palliative Care Australia Limited

- More than 450 Australians die each day of a life-limiting illness and could benefit from palliative care.
- Dementia is now the leading cause of death in Australia, accounting for 9.4% of all deaths in 2024.
- Only 38% of people who die of a life-limiting illness receive palliative care. On average, people receive palliative care 15 days before death, and only 1 in 5 people receive timely palliative care (three months or more before death).
- 73% Australians are open to talking about advance care planning, but only 33% have undertaken it.
- Around 90% of people say they want end-of-life care at home, yet an estimated 51% of deaths happen in hospital, 29.5% in residential aged care, and 14.9% at home.

Palliative Care Australia is encouraging Australians to start conversations about palliative and end-of-life care ahead of National Palliative Care Week, 10 to 16 May 2026.

"Too many Australians still think palliative care is only for the very end of life. In reality, it helps people live as well as possible for as long as possible by managing pain and symptoms, and it can be provided alongside other treatments," Mr Waring said. "Palliative care is about quality of life. It's not about hastening or delaying death, but on helping people live well for as long as they can."

To access campaign resources, download the Supporter Toolkit and support National Palliative Care Week, visit the Palliative Care Australia website: <https://palliativecare.org.au/npcw/national-palliative-care-week-2026-getting-to-the-heart-of-it-big-questions-real-answers/>

the day can improve energy, reduce stiffness, and support overall wellbeing.

3. Check your posture regularly
Whether you're working at a desk, driving, or looking down at your phone - posture plays a huge role in how your body feels. Think "shoulders back, head tall" and try to reset your posture a few times each day.
4. Listen to early warning signs
Headaches, tight shoulders, low energy, or disrupted sleep are often signs your body is under stress. The earlier you address these, the easier they are to improve.
5. Take time that's just for you
Even 10 minutes a day of something that helps you recharge: reading, walking, breathing, or simply sitting in silence, can have a powerful impact on your mental and physical health. Mums don't need to "earn" rest or care - it's something they deserve.

This Mother's Day, it's a great opportunity to not only celebrate Mum, but to encourage her to prioritise her own health too.

As a small way to support this, we're offering a limited number of Mother's Day appointments for \$79 (normally \$160) for those who may have been putting their health on the back burner. Because when Mum feels her best, it flows into every part of her life - and everyone around her benefits too.

<https://www.onebodychiropractic.com.au/>



Project Meow Geelong

Marie McPadden OAM, Project Meow

Please make sure that your cat is desexed to prevent unwanted litters of kittens. If you do have kittens to give away, take them to GAWS where they will be desexed prior to adoption.

Below is a follow up article to a report in the Star last week.

As reported in last week's Star, Project Meow received a grant from Animal Welfare Victoria to assist with desexing, vaccinating and microchipping cats in the Geelong area.

Project Meow was born in 2018, out of despair at the growing number of cats and kittens flooding our local shelter and rescue groups.



When I started working at GAWS (Geelong Animal Welfare Society) 14 years ago, the number of cats in adoptions would drop to about 30 in the winter. Before I retired in 2019, numbers had exploded to be constantly well in the hundreds all year round.

Cats are breeding several times a year, and kittens are now becoming pregnant themselves at 4 months old. When each litter has an average of 4 kittens, 2 of which are female, and they can breed 3 times a year, suddenly we have a population explosion second only to our current rabbit problem.

Unfortunately, desexing costs are expensive and unaffordable for many. Project Meow supports low and no cost desexing for those Geelong people unable to afford it.

To date we have supported 2000 adult cat desexings and rescued 1800+ kittens, sending them through to GAWS or Rescue organisations for desexing prior to adoption. This represents the prevention of thousands of unwanted kittens and better lives for those cats already here.

While we hope to expand into the Surf Coast Shire at some stage in the future, we are a voluntary organisation and rely on grants and fund raising to meet desexing costs and overheads. We need to build more support from Surf Coast residents to expand our work.

Importantly though, you can already be a huge part of the solution – desex your cats, both boys and girls. If you have kittens, don't give them away undesexed – take them to GAWS to be desexed before adoption.

Don't adopt a 'free' kitten – it will need expensive Vet work, so it won't be free. Go to GAWS to adopt a kitten or cat that has been desexed, vaccinated and treated for fleas and worms. You can help stop the flood. You can help improve cat welfare.

For more information please check our website projectmeow.org.au or Facebook page.

South Coast Shire achieves ECO Destination Certification, which will bring many benefits, drawing overseas and Australian tourists

Surf Coast Shire

Ecotourism Australia has announced the Surf Coast Shire has earned ECO Destination Certification, recognising the region's adherence to global best practice sustainable tourism and environmental management standards.

"This certification recognises the dedication of the Surf Coast Shire team, businesses and residents in making the Surf Coast a model for responsible tourism in Australia," said Elissa Keenan, CEO of Ecotourism Australia.

"With exceptional nature-based experiences offered by ECO Certified operators such as Torquay Surf Academy, Southern Exposure Eco Adventure Sports and Go Ride A Wave, and sustainable accommodation offerings from Desa Retreats, RACV Torquay Resort, Great Ocean Road Resort and Mantra Lorne, visitors know they are supporting a region that values its environment as much as its vibrant lifestyle."

The region monitors visitor numbers and behaviour to manage impacts on natural and cultural sites, while strict guidelines and licensing protect wildlife and sensitive ecosystems. Water conservation measures, low-impact transport options and climate adaptation strategies ensure tourism practices remain resilient and environmentally responsible. At the same time, the Shire supports authentic cultural engagement, ensuring local communities benefit economically while preserving their traditions.

Mayor Cr Libby Stapleton said, "One of our priorities is to foster slow and regenerative tourism that is respectful of the local environment, values local communities and maximises local yield and revenue. This certification will help us to achieve that."

ECO Destination Certification assesses a region on more than 90 criteria across eight sections including Destination Management, Environment and Climate, Culture and Tradition, and Social Wellbeing. By achieving ECO Destination Certification, the Surf Coast Shire joins a growing network of certified destinations across Australia. Through Ecotourism Australia's partnership with Green Destinations, Surf Coast Shire is also now part of a distinguished group of over 200 certified destinations globally.



L-R: Surf Coast Shire Cr Libby Stapleton, Council CEO Robyn Seymour, Barwon Water Nicole Sexton, Parks Victoria Dale Antonyson and Great Ocean Road Coast and Parks Authority Libby Mears.

AMPA
AUSTRALIAN MUSEUM OF PERFORMING ARTS

A SHOWSTOPPING EXHIBITION

DIVA



50% OFF
for final week

Must close 26 April | Arts Centre Melbourne



Created by the V&A –
touring the world



Winchelsea
**Medical
Clinic**

Located at 36 Main Street, Winchelsea 3241

For any enquires or bookings please contact the clinic on 5292 8028.
Or visit our website: www.winchmc.com.au

Opening Hours:

Monday - Friday 8:00am - 5.00pm

(Monday Evening Clinics available and selected Saturdays)



Our clinic accepts online bookings via the app called HotDoc.
Download the app on the App Store or Google Play or head to our website.



17 Alsop Drive

- ❑ LOG BOOK SERVICE
- ❑ AUTO ELECTRICAL
- ❑ TOWING
- ❑ AIR CONDITIONING
- ❑ CLUTCH & BRAKES
- ❑ TYRES
- ❑ WHEEL ALIGNMENT
- ❑ BATTERIES

**CAR, TRUCK REPAIRS
& Roadworthys**

PH: 5267 3001

Mob: 0417 137 457

**R.A.K. DAVIS
& SONS**

**CARTAGE
CONTRACTORS**

WINCHELSEA

SUPPLIER OF ALL QUARRY MATERIALS, TRUCK HIRE

CARTAGE OF GRAIN, LIME, GYPSUM & SUPER

LANDSCAPE & GARDEN SUPPLIES

56 WILLIS ST, WINCHELSEA

Ph – 5267 2094

Ryan – 0438 672 281

email: rakdavissons@gmail.com



SIMPLE STORAGE SOLUTIONS

- Personal & Business Storage
- Boat, Caravan & Vehicle Storage
- High Security Premises
- Individually Alarmed Units
- Electric Gate Access
- 7 Day Access & CCTV

YOUR STORAGE PROBLEMS SOLVED

5267 3116

6 ALSOP DRIVE, WINCHELSEA 3241

Wightons Lawyers

Dispute Resolution & Litigation

Debt Collection

Property Law

Wills & Estates

Powers of Attorney

Business Law

Family Law

By appointment only

22 Willis Street, Winchelsea

ph. 5221 8777

www.wightons.com.au



**Generations of Care
and Compassion.**

Tuckers
Funeral & Bereavement Service

... for a life worth celebrating



AFDA Member

PH: 5221 4788

www.tuckers.com.au



45 Anderson Street, Winchelsea 3241 Tel 5267 2660 winchelseagolf.com.au

Winchelsea Golf Club



Rachel Boddington

Results Wednesday 15th April

Weekly Stableford

17 Players

- 1st - Bill Spencer (17) 36 points C/B
- 2nd - Rob Wilson (18) 36 points C/B
- BDL - Tara Steward (17) 35 points C/B
- BDL - Neil Hickman (11) 35 points C/B

NTP (6th/15th) - Denis Chappell

Ladies Results

What started as a 18 hole comp become 9 holes after everyone got wet.

Winner : Ann Davis 17 pts

R/ Up: Di Bartel 14 pts, CB Sue Cuthbert

This coming Monday sees the team of Tara, Di and Mary play in the Birregurra Bowl and Liz playing in the SWDA Seniors Championships at Portarlington, Liz won last year so good luck for back to back wins



Golden Hole (2nd/11th) - Andrew Ellery

NTP (6th/15th) - Andrew Ellery

NTP (8th/17th) - Philip Crook

Coming up:

Wednesday 22nd April

Weekly Stableford

Saturday 25th April - Anzac Day

Stableford - 12 noon start

Results Saturday 18/4/26

Moriac Members Guest Day Stableford

23 Players

- 1st - Dale Morgan (13) 37 points
- 2nd - Andrew MacDonald (26) 34 points C/B
- 3rd - Alan Redmayne (11) 34 points C/B
- BDL - Philip Crook (12) 34 points C/B
- BDL - Stephen Cole (13) 33 points C/B
- BDL - Aaron Wight (16) 33 points C/B



Peter McConachy
LIVESTOCK & REALESTATE
0408 522 878

Jamie McConachy
LIVESTOCK
0418 522 879

Dougal McIntyre
LIVESTOCK
0439 575 612

Matt Nelson
LIVESTOCK
0428 315 400

Tim Hill
LIVESTOCK & REALESTATE
0427 177 133

Andrew Rice
REALESTATE
0457 105 500

Michael Stewart
REALESTATE
0418 520 467

Josh Lamanna
REALESTATE
0417 586 032

Daryl Osborne
REALESTATE
0419 388 341

Anthony McDonald
REALESTATE
0418 593 597

PROPERTY MANAGEMENT

Clare Wilson
PROPERTY MANAGEMENT
05231 5011

Melissa French
PROPERTY MANAGEMENT
05231 5011

Nathan Gray
PROPERTY MANAGEMENT
05231 5011



Livestock and rural agents servicing Western Victoria





Need tax advice...?

Business & SMSF Tax Planning Specialists

Winchelsea Torquay
5267 2673 5261 2262
surftax.com.au

SIMCO PLUMBING SERVICE

Domestic - Commercial - Rural

0400 643 976

- All general Plumbing and Gasfitting • Water tanks and Pumps
- Renovations and Extensions • Hot water and Heat pump
- Split system and Wood heaters • Roof and Gutter
- Septic and Treatment plants • Excavation, Bobcat and Tipper
- Driveways and Earthworks
- Blocked drains and CCTV Inspection

Simon McGillivray
Lic: 109610 Free Quotes, Fast & Friendly Service



Winchelsea
Community
Foodbank

Fridays, 12 - 2PM
30-32 Hesse Street Winchelsea

For more info, contact Tess
healthpromotion@hesse.vic.gov.au
0417 848 292



All welcome
No eligibility requirements



Life's busy. Let us help you.

Contact us today

- We can help you with:
- Buying your first or next family home
 - Saving for your first home
 - Residential Investment Lending
 - Refinancing from your current lender
 - Home loan reviews
 - Pre-approvals

With extensive banking experience and financial expertise, we'll help bring your financial goals to life.



Josie Kavenagh
0409 564 192



Julie Dunkley
0466 217 889



Community Bank
Winchelsea and District

BOXING STRENGTH TRAINING KIDS KUNG FU BOXING STRENGTH TRAINING KIDS KUNG FU

SUNNY GYM

GYM BUT JOYFUL

FITNESS AND MARTIAL ARTS IN WINCHELSEA

SUNNY GYM OFFERS SMALL GROUP CLASSES IN PERSONAL TRAINING, BOXING AND KUNG FU.

sunnygym.com.au
0401417387

BOXING STRENGTH TRAINING KIDS KUNG FU BOXING STRENGTH TRAINING KIDS KUNG FU



Winchelsea Football Netball Club Inc

Hopkins St, Winchelsea winchelseafnc@hotmail.com

Blues News

Janet Fletcher



Welcome to Blue's News where Footy and Netball are back and it's been a hectic opening couple of weeks for the Winchelsea Blues on the Football Field, the Netball Courts and in the Catering department as well!

SATURDAY 11TH APRIL

RESERVES:

Winchelsea Blues 4.5.29 Def Werribee Centrals 4.4.28

The opening Round saw the Blues host Werribee Centrals at the earlier time of 11am for the Reserves to kick off the 2026 GDFNL Season, which saw one of the tightest, even games of footy played for a long time. Scores were within a kick for most of the low scoring game and the Blues got home by all that's needed in a tight contest - 1 point. Great effort to hang on and withstand the pressure that comes with that score line and get the 4 points over the line.

GOALS: Cameron Primmer 2, Byron Reid 1, Nick Hughes 1.
BEST: Caleb Brown, Cassidy Parish, Byron Reid, Patrick Dench, Lachlan Jenkins, Cameron Primmer

SENIORS:

Winchelsea Blues 9.12.66 Def By Werribee Centrals 12.13.85.

The Blues had a dreadful first quarter allowing Werribee to race to a 6.4 score to a solitary point from the home side. The second and last quarters from Winchelsea outscored Werribee but the damage was done in that first quarter and the Blues were unable to claw back sufficiently to get the win.

GOALS: Indi Parish 2, Jordan Gould 2, Bailey Mumberson 2, Josh Freeman, Jack Sampi, Jordan Huff all 1 goal.
BEST: Fin Parish, Noah Harvey, Damien Hewson, Jack Terill, Jordan Gould, Callum Nankervis.

THE SPEED SHEAR

This was a huge undertaking from the Club's Committee under new President Angus Leigh along with several new Committee Members, and all in all from feedback received was a great success.

The weather while not showing us the glorious Autumn weather we have all enjoyed of late could have been worse and goes to prove that our country community can't be put off by the first cold and wet weather April can throw at us.

Thank you to the Club's Volunteers who worked so hard to pull this off and thank you also to members of our great Community who put up their hand to help out on the day.

The W.F.N.C. plans to have a repeat SPEED SHEAR in the future – a date to be confirmed, maybe 2027 or 2028. The Winchelsea Blues hope that everyone who attended enjoyed the night!!

SATURDAY 18TH APRIL

Winchelsea Blues hosted Belmont Lions in a twilight meet at Eastern Reserve with the Netball starting at 11.30am and the Reserves kicking off at 3.30pm in a great sunny afternoon although the wind was certainly creating a bit of a chill factor.

RESERVES:

Winchelsea Blues 3.9.27 Def By Belmont Lions 9.13.67

After the previous week's thrilling encounter, the Reserves couldn't go with the opposition last Saturday and goals were hard to come by. Belmont Lions got off to a reasonable start in the first quarter and were never headed in the match. The Blues were held scoreless in the third quarter and although valiant couldn't match the Lions on the day.

GOALS: Tom Kennedy 2, Dustin Baker 1.
BEST: Jude Coverdale, Cooper Mumberson, Lachlan Carver, Blake Gardam, Dustin Baker, Joss Church.

SENIORS:

Winchelsea Blues 11.5.71 defeated Belmont Lions 5.8.38

The Blues were determined to get off to a better start last week than in the opening season round which potentially cost them the game, and they did well to go into the first game huddle with scores 2 goals 1 point apiece.

The second quarter saw inaccurate kicking by the Lions 1 goal 5 points to the Blues 4 goals 1 point have the Blues looking at a decent break at half time. The second half of football from the Blues was probably the best 2 quarters of football for the last 18 months. Coaches, supporters and sponsors who attended the game were very happy with the game's outcome. The big home crowd who attended the game went home happy chappies that's for sure. Jordan Gould making a splash with 5 goals and Cam Primmer back in the Senior side with 2. Adam Walsh a welcome return to the Winchelsea Blues. Cass Parish also back in the Senior side last week made his presence felt with a B.O.G. performance, Jordan Huff and the leadership group continue to lead well on and off the field.

GOALS: Jordan Gould 5, Cameron Primmer 2, Caleb Brown, Bailey Mumberson, Fin Parish, Noah Harvey all 1 goal.
BEST: Cassidy Parish, Jordan Huff, Adam Walsh, Jordan Gould, Ollie Mahncke, Sam Adams.

SATURDAY 25TH APRIL

The Winchelsea Football and Netball Club Inc. is privileged to be catering for the Winchelsea's RETURNED SERVICEMEN'S LEAGUE morning tea following the Memorial service on Saturday the 25th April at 10.30 am at Eastern Reserve. Please feel free to come up to the Clubrooms for a cup of tea and coffee, a bite to eat and a catch up with friends in our Winchelsea Community as we celebrate one of our country's most important calendar dates.

LEST WE FORGET

The Winchelsea Football and Netball Club will be hosting the Corio Devils later in the afternoon with another twilight meet, the Reserves kicking off at 3.30 pm followed by the Seniors at 5.30pm. The month of April has been a huge HUGE effort for our Catering Volunteer group. The Club's excellent endeavour and reputation remain intact.

You all know who you are and have the thanks and respect from the W.F.N.C. **YOU ARE AN AMAZING BUNCH OF INDIVIDUALS A PERSONAL THANKS Jano.**



NATURAL GAS CONNECTIONS

**M. & L DRAYTON
PLUMBING SERVICES**

YOUR LOCAL LICENSED

- PLUMBERS (24356)
- GAS FITTERS
- GAS CONVERTERS
- CARBON MONOXIDE TESTING

MARK 0428 520 142



5234 6585 0417 385 984
For all your septic tank, grease traps
and interceptor pits servicing.
Locally owned and operated



**Landcare
Victoria**



Moriac Veterinary Clinic

0447 781 089

PHONE 24 HOURS

784 Hendy Main Road Moriarc

info@moriacvet.com

www.moriacvetclinic.com.au

HOURS // Monday - Friday: 8am - 5pm



**REGISTERED
Building Practitioner**

- NEW HOMES
- ALTERATIONS
- GARPORTS
- BATHROOMS
- EXTENSIONS
- DECKS
- VERANDAHS
- WINDOW REPLACEMENTS
- RENOVATIONS
- PERGOLAS
- RE-CLADS

**Leigh Lupton
0438 840 104**

LEIGHLUPTON17@GMAIL.COM

Est. 1977

Green Lead Electrical
Connecting you to a greener future
REC 23618

0467 097 101



**Servicing Geelong &
the Surf Coast**

**Specialising in all residential
electrical work including:**

- Switch board & lighting upgrades
- Outdoor lighting
- Electrical safety checks
- Energy efficient LED lighting
- Ceiling sweep fans & ventilation
- Energy saving advice

Phone Martin Wilkinson:

0467 097 101

greenlead@outlook.com

113226B-CG18-14



*New Homes, Renovations, Extensions,
Bathrooms, Decks & Pergolas*

0408 583 362

stephen@alfordbuilt.com.au



**REGISTERED
Building Practitioner**

**HESSE
RURAL
HEALTH**



Acute Care+
Urgent Care+
Residential Aged Care+
Community Nursing
Dietetics
Physiotherapy
Occupational Therapy

Diabetes Education
Social Support Groups
Counselling
Home Care
Health Promotion

* services from Winchelsea only

www.hesseruralhealth.com.au

P: (03) 5267 1200 E: reception@hesse.vic.gov.au



Winchelsea Football Netball Club Inc

Hopkins St, Winchelsea winchelseafnc@hotmail.com

Junior Netball

Shae Callahan



Under 11s

The Winchelsea Blues Under 11s stepped onto the court for their very first game in the “big league” on Saturday morning, and what a special moment it was for the club. The sidelines were packed with an incredible show of community support, as the Winchelsea cheer squad turned out in force to encourage our youngest players.

There may have been a few nerves in the air before the first centre pass—perhaps even more from the parents than the players! But once the game got underway, the team settled in beautifully, playing with enthusiasm, determination, and big smiles right through all four quarters.

Taking on the Belmont Lions, the Blues showed great effort and teamwork, ultimately going down 18–8. While the scoreboard didn’t fall our way, the growth, spirit, and love for the game on display was a fantastic sign of what’s to come. If this first outing is anything to go by, the future of the Winchelsea Blues is in very capable hands.



Under 13s

The Winchelsea Blues Under 13s faced a tough challenge against a strong Belmont Lions team, going down 49–4 on the weekend.

With a junior-aged side, the team continues to build experience and confidence with every game they play. It’s been great to see the players taking what they are learning at training and applying it on court, with growing understanding of positioning, teamwork, and game play.

While the scoreboard didn’t reflect their effort, the determination and willingness to keep improving is clear. This group is developing each week, and their progress will no doubt continue as the season unfolds.



Under 15s

The Winchelsea Blues Under 15s took on Belmont Lions on the weekend, going down 23–8 in a hard-fought contest. With three players unavailable, the team showed great resilience, stepping up and giving their all across the court. A big thank you to Ally from the Under 13s, who stepped up to lend a hand and give some much-needed relief to some very weary legs.

The girls did a fantastic job sharing positions and supporting one another throughout the game, demonstrating true team spirit and determination. Despite the result, their effort and commitment could not be questioned.

Under 19s

Winchelsea’s 19 & Under side delivered a dominant performance on the weekend, showcasing both versatility and depth in a commanding win over Belmont.

With several players stepping outside their usual roles—including defenders taking turns in the goal circle and midcourt—Winchelsea proved their adaptability and team-first mindset. Despite the positional changes, the group remained composed and worked seamlessly together across the court.

The girls applied consistent pressure from the opening whistle, driving the ball strongly through the midcourt and converting efficiently in attack. Their defensive efforts were equally impressive, limiting Belmont’s scoring opportunities and capitalising on turnovers.

Winchelsea ran out convincing winners, 41 to 13.

Leading the scoreboard was Millie Partridge with an outstanding 21 goals, supported by Reani Mawson with 12, Ash Bell with 7, and Tallulah Dunn adding 2.

It was an all-round impressive performance from the 19s, highlighting both their skill and willingness to step up for the team. If this match is anything to go by, Winchelsea looks set for an exciting season ahead.



Scott McDonald
0423 413 829



S.J.R AUTOMOTIVE
 ABN 942 483 846 39
 13 ALSOP DRIVE, WINCHELSEA VIC 3241

- Domestic and Commercial hire equipment • Industrial welding gas
- Digging and Earthmoving equipment • New trailers and trailer repairs
- Firewood • Stockists of Royal Oil Lubricants products
- LPG for domestic and commercial requirements

Give Chris and the Team a call on **5232 1177** or email info@colachire.com.au
www.colachire.com.au
 101 Wallace St Colac 3250




Water Supply Specialists
 WATER SOLUTIONS

74 Dennis Street, Colac
 5231 1861

ALL THINGS WATER:

- PUMPS • PIPES
- FITTINGS • TANKS
- POOL CHEMICALS
- IRRIGATION
- WATER PURIFICATION
- SOLAR • REPAIR




Winchelsea Branch

By Appointment:
 Monday 2-5pm Thursday 11-3pm

40 Main Street Winchelsea
 5232 1792 www.colacvet.com.au

MGT BUILDING & CONSTRUCTION

NEW HOMES | EXTENSIONS | RENOVATIONS **Ph: 0409 433 687** 

A family business operating for more than 138 years, HF Richardson services an extensive client base throughout the greater Winchelsea area. Our success is built on a long history of innovation and while we've moved with the times, our basic values of honesty, trust and integrity have remained.



Eric Foster
0429 499 924
 Sales Executive

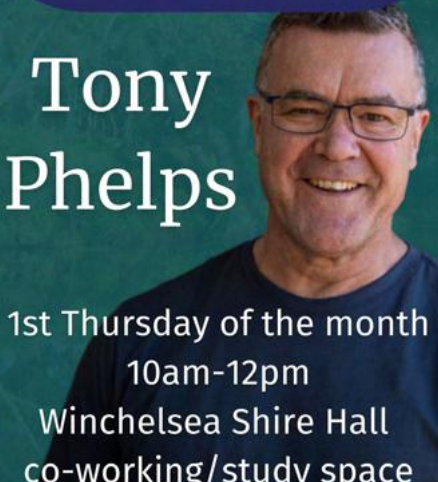


Ken McDonald
0418 524 150
 Licensed Estate Agent
www.hfrichardson.com.au

Residential | Rural Lifestyle
 Agricultural Farms

HF RICHARDSON
 PROPERTY

Chat with your Councillor



Tony Phelps

1st Thursday of the month
 10am-12pm
 Winchelsea Shire Hall
 co-working/study space



parkrun 111



Saturday 18 April 2026

Trebeck Reserve, Winchelsea
parkrun.com.au/trebeckreserve

If you wish to join us any Saturday morning as a walker, runner or volunteer please complete the simple online registration at parkrun.com.au/register. This is free, only needs to be done once and can be used at any of the 5,000 parkrun events worldwide.



20 participants completed the course through Trebeck reserve this week in perfect conditions. We had visitors from Darebin and Jells Park.

3 people completed their personal best time for Trebeck Reserve. Congratulations to Nicholas Liubinas, Maddy O'Callaghan and Anthony Keogh.

7 volunteers made this event possible. Thanks to Kate McInnes, Neil McInnes, Linda Gray, Ian Wakeman, Maureen Gunson, Darryl Thompson and Virginia Thompson.

Full details of this week's results can be found at trebeckreserveparkrun.com.au/results or check out our Facebook page for more photos.

To volunteer please send an email to trebeckreserve@parkrun.com

Please note Trebeck Reserve parkrun for 25th April is cancelled. Next event will be on 2nd May.



DEFIBRILLATORS IN WINCHELSEA

Accessible to the public 24 hours a day

Winchelsea Lions Club has compiled a list of public access defibrillators in Winchelsea.

If you know others, please contact Linda Carter 0439 817 263.

- **Ambulance Victoria** 33 Willis Street
- **Bendigo Bank** 11 Main Street
- **Globe Theatre (Side entrance)** 17 Willis Street
- **Hesse Rural Health** 8 Gosney Street
- **Men's Shed** 51 Hesse Street
- **Netball Courts** Eastern Reserve Hopkins St
- **Senior Citizens Club** 36 Harding Street
- **Uniting Church** 33 Hesse Street
- **Winchelsea Bowls Club** Hesse Street
- **Winchelsea Golf Club** 13 Anderson Street
- **Winchelsea Primary School** Main Street
- **Wurdale Memorial Hall** 220 Wurdale Road





Delhi-ligious

At the Winchelsea Shire Hall
May 1st 2026
5.30pm - 8pm

Adults \$35
Kids serve \$17.50

Enjoy a serving of both **Butter Chicken and Beef Aloo** with aromatic steamed basmati rice, Pappadam and side salad. or vegetarian option, Paneer Masala, Zucchini Sabzi and Homemade syle mixed vegetables.

Finish off with your choice of dessert:
 Gulab jamun, Pannacotta or Kheer (Rice pudding)

Drinks available for individual purchase with dinner.

Bookings at: <https://humanitix.com/au>
Email: shirehall@winchhouse.org.au
Phone: 0352672028



Stitch Don't ditch it!

Wednesday's 9.30am - 4pm
 Winchelsea Community House 'Star Room'

SEWING MACHINE & OVERLOCKER available. Bring along a craft project you'd like help with, learn to sew, knit, crochet or repair clothing and homewares yourself with the guidance of our knowledgeable community volunteers.

Gold Coin Donation



TAI CHI

Friday Mornings
 9am - 10am
 in the Winchelsea Shire Hall

Originating in China, Tai Chi and Qigong (Chi Kung) is the practice of slow meditative physical exercise designed for relaxation, balance and health. Suitable for all abilities & ages.

Find us on facebook at: winchelsea tai chi group

Please call 03 52672028 or email reception@winchhouse.org.au to register. **\$10 Per Class**

Yoga & Mat Pilates in the Shire Hall



Mat Pilates 6.45pm Tuesdays
 Pilates original style, on the Mat. Guided movement that supports strength and postural alignment, with a strong focus on building core, balance and flexibility. Move with intention, build resilience, and feel stronger in your body.

Wednesdays Yoga Flow 6.30pm
 Inclusive, all levels of experience are welcome and encouraged. You will not be limited by age, shape or by being a beginner. Lisa invites you to unlock the ancient wisdom stored in your being. Build strength, clarity and bliss as you move through a dynamic whole body experience. Expect a playful, powerful class that leaves you feeling refreshed.

Thursdays Vinyasa Yoga 7pm
 Kate offers dynamic vinyasa-style class with a strong focus on core strength and balance building. Each session weaves together pranayama (breathwork), meditation, yoga philosophy, and mindful movement. Students can expect to enhance their practice in every class and deepen their connection to yoga.

CHATTY CAFÉ

Friday's 10.30am – 12.30pm from Feb 16th.

"Sip, Chat, Share, Care"

Winchelsea Shire Hall.

Everyone Welcome, Gold coin donation.



WINCHELSEA KNITTING GROUP

Thursday Mornings 10.30 -12.00
Winchelsea community house.

All Welcome, Learn to knit or bring a project to work on while you enjoy a cuppa and a chat



Craft & Crochet Group

\$5 per person.

1pm, every second Saturday
in the Winchelsea community house.

Register your interest at reception@winchhouse.org.au