

TEMPLE ISRAEL OF GREAT NECK A REJUVENATION OF ENGAGEMENT & SPACE

WHO WE ARE

Temple Israel of Great Neck has long been the center of Jewish life on Long Island — a place where families of Ashkenazi, Sephardic, and Mizrahi backgrounds gather together to pray, learn and celebrate.

In recent years, we have been innovative and forward-thinking with our programming and education. We now enjoy expanded adult learning, enhanced youth and family events, stronger schools, vibrant committees, and a growing membership that reflects the diversity and warmth of our community. Additionally, we have enriched our calendar with powerful speakers, engaging not only our congregation but also the wider Jewish population. However, our physical building no longer reflects who we are. To continue to grow and move forward, we need to rejuvenate our spaces.

OUR VISION

Preserve & Honor

Maintain the historic character and ritual integrity of our building while making careful updates.

Programs & People

Support our growing programs, schools, and membership with spaces that enable community life.

Accessibility for All

Create universal access in various areas throughout the building in order to be safe and welcoming to everyone.

WHERE TRADITION MEETS CHANGE

SPACES & WORK

We are refreshing our building in five thoughtful phases. This is the planned sequence, though the order may shift as we navigate funding, permitting, and construction along the way.

PHASE 1: BLUE ROOM, LIBRARY, PINE ROOM & OUTDOORS

This first phase, now complete, began with community learning spaces and outdoor improvements to expand our usable areas right away. By renovating these spaces, we increased our programming capacity with multiple welcoming rooms of different sizes where people can gather comfortably.

Our first project was the **Blue Room**, modernized with new flooring and fresh paint.

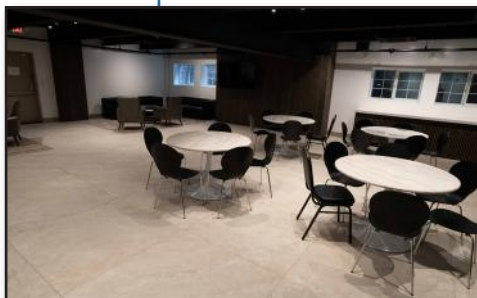
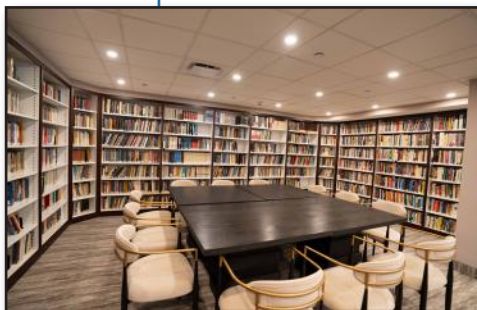
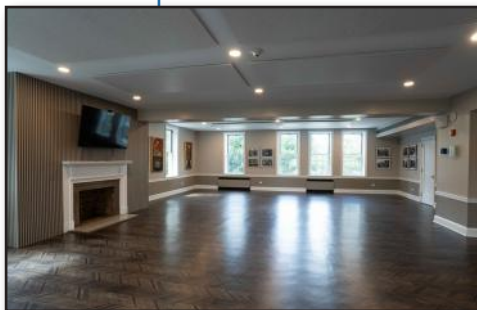
In the **Library**, we created more space for learning and connection, adding updated lighting, carpeting, and furniture to make it a vibrant hub—most recently hosting Kol Isha.

The **Pine Room** was transformed into a warm, lounge-like setting with paneled walls, and now serves as a favorite gathering spot for Youth House teens and smaller congregational events.

Outside, the **front of our building** was refreshed with redesigned landscaping, a new walkway lined with ten Natchez Crape Myrtle trees, colorful rose bushes, and important safety features including additional iron handrails, enhanced lighting, and new bollards.

Together, these rejuvenated spaces give our educators, clergy, and program leaders a variety of inviting places to bring our community together.

We encourage you to visit these spaces when you are in the building.



PHASE 2: ALL STAIRS & HALLWAYS

In this phase, we will enhance safety and aesthetics throughout the building. Carpeting, moldings, and lighting will be replaced, while fresh paint and wallpaper will brighten and refresh our halls and stairways.

We also plan to add a permanent ramp to the Sanctuary, ensuring that this sacred space is accessible and welcoming to all members of our community.



PHASE 3: CRYSTAL BALLROOM & PATIO

Our largest gathering space, the **Crystal Ballroom**, will be revitalized with new flooring, modern lighting, refreshed wall finishes, and aesthetic upgrades to the stage. These improvements will enhance the beauty and functionality of the room, creating a more welcoming setting for weekly kiddush, communal celebrations, lifecycle events, and meaningful programs.

Outside, the **Patio** leading to the parking lot—home to our beloved **Sculpture Garden**—will be renewed as well. The aging bluestone will be replaced with new materials, ensuring a safer, more attractive entrance that connects our indoor and outdoor spaces.

PHASE 4: SANCTUARY & BALCONY

The worship and gathering experience in our **Sanctuary** will be elevated with new benches, including modular options that allow for accessible seating. Prayer books will be stored neatly on seatbacks, while new carpeting, refreshed wall finishes, and refinished woodwork will bring warmth and beauty to this sacred space.

The **Balcony** will be updated with new seating and carpeting to match the improvements in the Sanctuary.



Designer's rendering of Sanctuary

PHASE 5: CHAPEL & RESTROOMS

The **Chapel** will be renewed with new seating, fresh carpeting, and a clean coat of paint, creating a warm and welcoming space for prayer and reflection.

Existing first-floor **restrooms** will be updated, and a newly built accessible bathroom will ensure comfort and inclusivity for all who enter our building.

Over \$1 million raised

We're more than one-third of the way
to our \$3 million fundraising goal!

How you can help us get to our goal:

- Make a one-time gift or set up a pledge for payment over time.
(Up to three years for gifts of \$50,000 or more; otherwise, we encourage payment within one year).
- Introduce potential donors or foundations to our campaign.
- Volunteer your time to help coordinate work and to apply for grants.

If you have questions, concerns, or suggestions, please email:
rejuvenation@tign.org

LEVELS OF GIVING

Visionaries of Tomorrow	\$1,000,000+
Amudim	\$999,999 - \$500,000
Shomrei Masoret	\$499,999 - \$250,000
Chai Sustainers	\$249,999 - \$100,000
Ner Tamid Keepers	\$99,999 - \$50,000
Bonei Kehillah	\$49,999 - \$25,000
Chaverim Circle	\$24,999 - \$10,000
Partners in Tikvah	\$9,999 - \$5,000
Dor L'Dor Circle	\$4,999 - \$1,000
Magenim	Less than \$1,000

Naming opportunities are available as well.

Check the progress of the Rejuvenation Project:

We plan to start posting updates on our website, including fundraising progress,
photos of ongoing work and completed projects.
Check tign.org/rejuvenation at the start of November.

Leadership & Rejuvenation Committee Members

Clergy, lay leaders, and our Rejuvenation Committee are guiding this project
with care and attention to history and community needs.

Committee Chairperson: Rachel Geula

Jonathan Bloom • Susan Brustein • David Eshaghoff • Kiumarz Geula
Bitá Hendizadeh • Kevin Lalezarian • Sari Nathan • Steve Smolinsky
Howard Stecker, Senior Rabbi • Jamey Kohn, Executive Director

Design & Construction Partners

Interior Designer: Judi Goldsmith Lazaros
Architect: Design by Laleine • **Contractors:** PCCI Builders Corp.