

WEWO Monofork Datasheet



Find comprehensive details
and specifications of the
WEWO Monofork in the
booklet.

www.scanlox.com

WEWO Monorfork

Carts & Rollercages

Easy Communication

Safety

Various Models

Customization Possibilities



The Monorfork is designed for both speed and efficiency. Its single-fork design makes it particularly suited for transporting load carriers without a center block, such as carts and rollercages, ensuring seamless handling and improved operational flow.

Its compact construction allows for precise and swift navigation in confined spaces. Despite its streamlined design, the Monorfork maintains a high load capacity, making it a reliable solution for warehouses and production facilities.



Performance Data

1.200 mm

Max. Lifting Height

1.000 kg

Max. Lifting Weight

1,6 m/s

Max. Speed

Dimensions

2381 x 951 x 2335,5 mm (L x W x H)

Specifications

Natural Navigation - Top

Navigation Method

RAL7016, RAL1007

Powder Coating

Closed Lift System

Lift System

CE Standard

Certification

Lithium-Ion

Battery

Specification

Details



Pallet wo. middle leg

800 / 1.000 / 1.200 EUR format



Boxes wo. middle leg

Plastic / wood / metal



Palletboxes wo. middle leg

Plastic / wood / metal



Cart



Cages / Rollercages



Exeptions

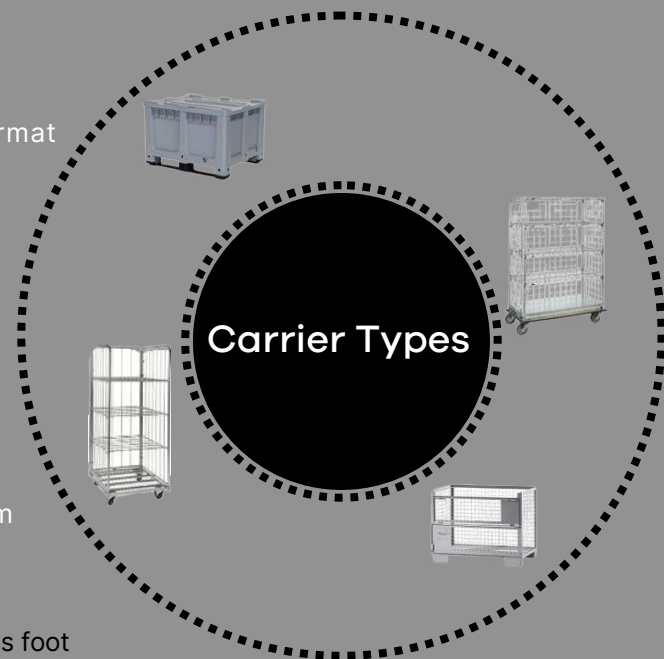
Carriers with closed bottom



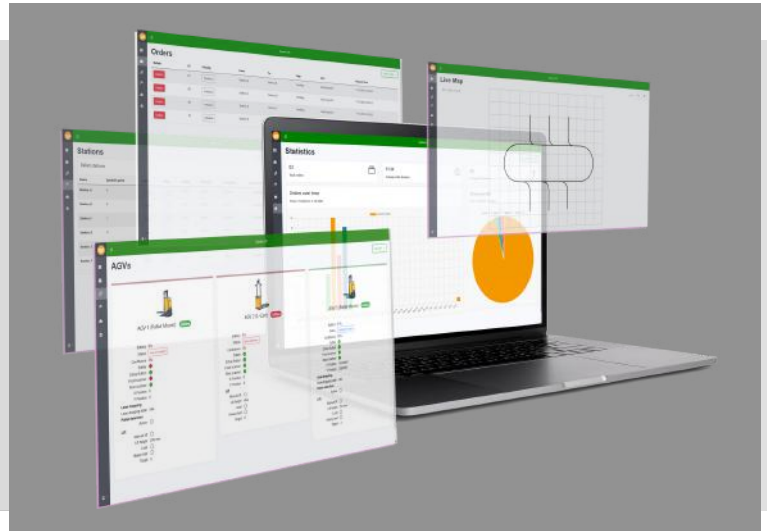
Other types of carriers - inquiry to supplier



NB: The vehicle is not limited by plastic wrap on the pallet's foot



Fleetmanagement & WMS Application



The Fleet Management Software & MES provides all the essential tools to efficiently manage warehouse and production environments. It seamlessly controls multiple AGVs within the same space, optimizing workflow and minimizing disruption.



Task Management

Assign, monitor, and prioritize tasks effortlessly.



Alarm & Traffic Management

Prevent bottlenecks and ensure smooth operation.



Deadlock Prevention

Optimize vehicle paths for continuous flow.



System Integration

Connects seamlessly with MES, ERP, and other enterprise systems.



Comprehensive Product Tracking

Monitors product positions and data in real time.



Seamless Integration

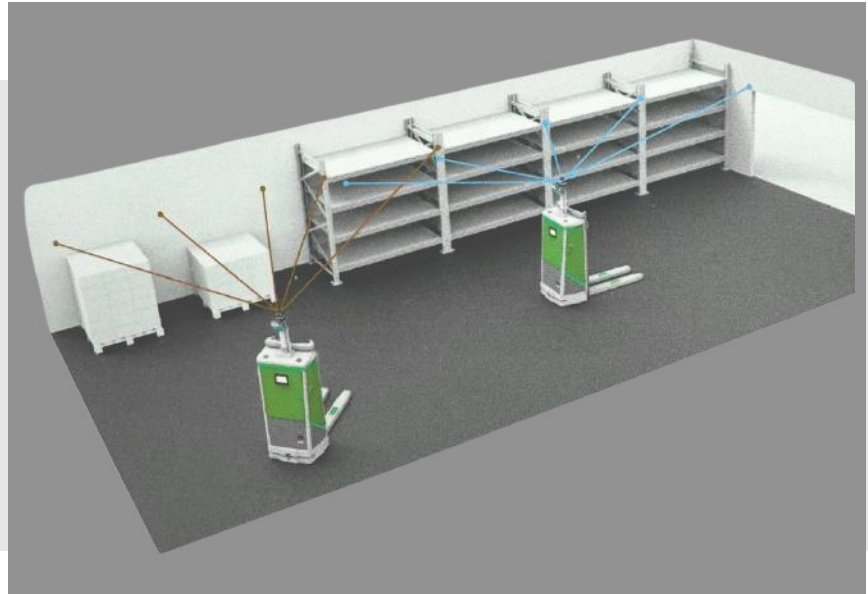
Connects with production lines, machines, and delivery stations.



User Role Management

Ensures secure and efficient system access based on defined permissions.

Navigation Method



The Palletmover utilizes natural navigation with top-mounted laser scanning to ensure precise and reliable movement.

Equipped with a high-accuracy laser scanner, the system continuously maps the environment, detecting reflectors to determine the vehicle's exact position.

Key Advantages

Highly Accurate Positioning

Advanced laser scanning provides precise location tracking.

Long-Range Detection

The scanner covers a wide area, ensuring efficient navigation.

Reliable in Dynamic Environments

Detects across flexible objects.

Enhanced Stability

Dead reckoning technology further refines positioning for consistent movement.

Safety & Scanners



The AGVs are equipped with advanced safety systems designed to protect employees, infrastructure, and the robots themselves.

They comply with international standards such as **ISO 3691-4** and **EN1525**.

Energy Management

The AGVs feature automatic charging, eliminating the need for manual intervention. When the battery reaches a minimum level, the AGV completes its current task and automatically navigates to an available charging station.

With this intelligent charging system, the AGVs remain operational with minimal interruptions, ensuring maximum efficiency in warehouse and production environments.

Key Advantages

Seamless Integration

AGVs recharge without disrupting operations.

Automated Docking

The integrated power collector ensures precise contact with the charging station.

Programmable Charging Levels

Adjust battery thresholds to optimize uptime and efficiency.

Minimal Downtime

Once charged, the AGV automatically resumes its next task.



Dimensions

