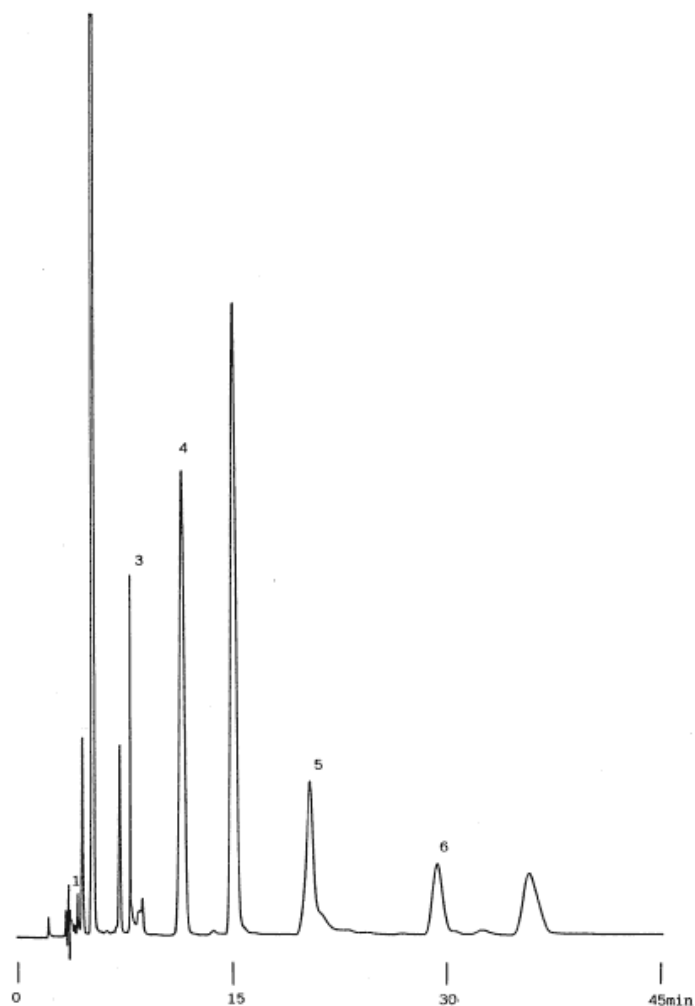


## Catechins in Oolong tea

Data No. LA218-0000



Column : Inertsil ODS-2  
5µm  
10 × 4.0  
(guard)+250 × 4.6 mmI.D.

Column Cat. No. : 5020-01102

Eluent : CH<sub>3</sub>CN/CH<sub>3</sub>COOC<sub>2</sub>H<sub>5</sub>/0.1% H<sub>3</sub>PO<sub>4</sub>=85/20/895

Flow rate : 1.0 mL/min.

Col. Temp. : 40°C

Detection : UV 280 nm

Injection Vol. :

Sample :

Solutes : 1. Gallic acid  
2. (-)-Epigallocatechin  
3. (-)-Epicatechin  
4. (-)-Epigallocatechin gallate  
5. Homocatechol  
6. (-)-Epicatechin gallate