

# Winchelsea Star

Price \$1

Your Weekly Community Newspaper

Since 1977

Vol 47 Ed 06

Tuesday 20 February 2024

[winchelseastar.org.au](http://winchelseastar.org.au)

**GET YOUR FREE  
DIGITAL SUBSCRIPTION  
TODAY!**  
[winchelseastar.org.au](http://winchelseastar.org.au)



The Winch locals who produce your weekly Winchelsea Star  
enjoying a get-together at the Winchelsea Hotel

(B) Tony Phelps, Susan Corby, Cromwell Hooper, Neil McInnes, Cathy Cheadle, Yvonne Stevens  
(F) Sasha Gauntlett, Judy Cameron, Cerrie Fogan, Linda Carter, Mick O'Mara

Winchelsea Sun 25 February 2024



## JOIN THE PARKRUN FAMILY

**WALK, JOG, RUN, VOLUNTEER**

or simply come and watch - it's up to you!

### FRIENDLY, ENJOYABLE 5K EVENTS

Every Saturday morning

### FREE & EASY TO TAKE PART

No need for special equipment or clothing

### FUN FOR ALL THE FAMILY

Prams and dogs can take part

### YOU DON'T HAVE TO RUN

Volunteering is a great way to get involved

### IMPROVE HEALTH & FITNESS

Be active in the open air

### BE PART OF A COMMUNITY

Make new friends and socialise

### DEVELOP NEW SKILLS

Opportunities to volunteer

### BUILD CONFIDENCE

Track progress and achieve new goals

Register at [parkrun.com.au](http://parkrun.com.au)

#### notes:

Pre-launch trial 25th February and 3rd March. 7:50am briefing  
Event takes place long the walking track in Trebec Reserve  
Start / finish at Sussex Street  
Well behaved dogs are welcome  
You don't have to be a runner. Walkers are encouraged



# Meet Dino the Woodturner

Judy Cameron



The next Winchelsea Market is on Sunday, March 3. Come along and see a great range of stalls and meet DINO THE WOODTURNER

I have had a stall at Winchelsea Market, (held on 1st Sunday all year) since November 2022. My wife Tina assists me. All items sold on my stall have been personally and lovingly made by me.

I have been woodturning for 36 years and operate from my workshop in Barongarook on the edge of the Otway Ranges. The vast majority of my work is made from storm-felled trees, branches, re-claimed and other sustainably obtained Australian timbers. I do my best to include natural features such as knots, voids, cracks, bark inclusions etc as these impart great character.

I regularly attend 'Turnfest' at Seaworld Resort in Queensland to advance my knowledge from some of the world's best woodturners, and keep abreast of my hobby with woodturning magazines etc.

I craft a huge range of products, mostly utilitarian items. Wooden bowls are great for serving foods such as nuts, crisps, popcorn, fruit, salads etc. or purely as a decorative piece. All my items have a non-toxic food safe finish.



Caring for your wooden bowl or other turned wooden item. You can wash your item with water and dishwashing liquid (but do not soak) then rinse it and wipe it dry. When dry, I recommend wiping it with grape seed oil (readily available from supermarkets), using paper towel. Grapeseed oil doesn't go rancid as do some other oils.

Don'ts. Don't—soak your bowl in water, put it in the dishwasher, microwave it, or allow fruit to decay in it. Treated properly your wooden item will last for many years.

**I am regularly approached at the market to make specific items for people and have so far managed to satisfy their requests.**

**You can contact me on 0429 874984**





NATIONAL CENTRE FOR  
**FARMER  
HEALTH**

in association with



# CALM THE FARM

## CREATING A HAPPY HEALTHY WORKPLACE

Are you interested in reducing risks to mental health in your farm workplace by improving your work systems, or doing things a bit differently?

Join us for an interactive and engaging **two-hour** workshop that explores ways of reducing work-related stress.

Connect with other local farmers as you focus on practical solutions to improve job satisfaction and effectiveness for you and your team.

Continue the conversation over a nutritious meal - **ON US!**

### Event details

**DATE:** TUESDAY 26 MARCH 2024  
**TIME:** 5:00pm for a 5:30pm start  
 Followed by dinner  
**COST:** FREE  
**LOCATION:** Inverleigh Public Hall,  
 71 High St, Inverleigh VIC 3321



### Key focus areas



#### Understanding the main work-related risk factors to farmers' mental health

What are the factors in the management of farm work that can affect the wellbeing of farmers and farm workers?



#### Explore how these may be impacting you and your farm business

How does it play out at your farm? What are the solutions and what can be improved?



#### Develop your own plan to stay on track

Use tools designed specifically for farmers - like 'Steering Straight' to identify ways to keep you positive and focused, and create a support network

**RSVP:** 18 March 2024  
 (Essential) Hannah Walker or Brooke Greig  
 5267 1200  
[Healthpromotion@hesse.vic.gov.au](mailto:Healthpromotion@hesse.vic.gov.au)



This program is supported by Western Victoria Primary Health Network under the Australian Government's Primary Health Networks Program.



## LIMITED SPOTS AVAILABLE!

RSVP NOW TO BOOK YOUR SPOT



## Two valued Winchelsea community spaces are again open for use following revitalisation:



### Gathering Space Shelter

**The new Barwon River Gathering Space Shelter is open for use, including its free barbecue.**

Picnic furniture will be installed in the shelter when available and landscaping work including the addition of an access ramp is planned to complete the gathering space.

The shelter brings to life community-led designs, replacing the former Mud Hut which was no longer safe.

We look forward to seeing community members and visitors making the most of the shelter and enjoying its riverside setting.



### Common go-kart area

**The former go-kart area at Winchelsea Common is revitalised and reopened, with new paths providing access to beautiful viewing areas.**



These works finalise revitalisation of sections of the Common following its decade-long closure due to contamination from former gun club activities.

The paths network includes a 'loop' around one of the Common's magnificent river redgums, seating and signage.

A new drain crossover links to Gladman Street and will help alleviate localised flooding issues.

The former go-kart area contains contaminated soil from throughout the Common that is safely capped with non-contaminated soil.

Fencing continues to protect areas of sensitive vegetation but those areas can be viewed from closer than before.

The reserve was reopened for restricted public access in March 2022 following extensive clean-up work by the then Department of Environment, Land, Water and Planning, and Council.

# Local Council Electoral Structure Review

## Surf Coast Shire

In 2023 the independent electoral structure review panel appointed by the Minister for Local Government completed the review of the appropriate number of councillors and the electoral structure for the Surf Coast Shire. The minister has released the report accepting a three ward structure, with each ward having three councillors for the Surf Coast Shire.

Below is Appendix One in the report, showing the ward boundaries and the current population in each ward. Following the appendix is a link for those residents who wish to read the complete report.

Within the Lorne Ward there were naturally diverse views. However, the majority view was that we did not wish to return to an unwarded structure. This has been accepted by the minister. My understanding is that there will be disappointment in both townships, in that Deans Marsh wished to be part of a hinterland ward and in Lorne we wished to have single wards with single representation.

The elector distribution contained in the table shows that the Otway Range Ward has the largest number of electors. This is wise as this allows for the predicted growth in both the Torquay and Winchelsea Wards.

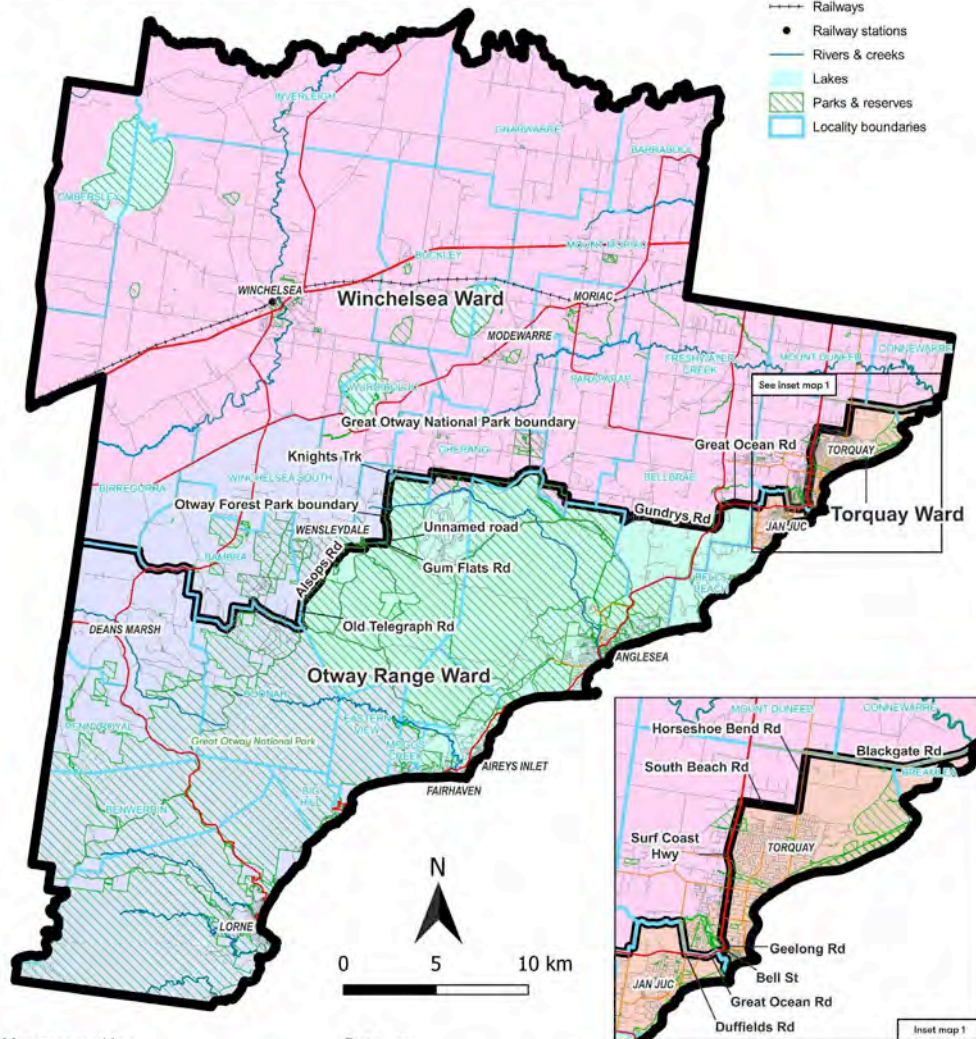
## Appendix 1: Map of recommended structure

### Surf Coast Shire Council Nine councillors, three wards

Ward	Councillors	Electors*	Deviation†	Area sq km
Otway Range	3	13,683	+16.19%	560
Torquay	3	11,503	-2.32%	16
Winchelsea	3	10,144	-13.86%	980
Total	9	35,330		1,556
Average		3,926		173

\*Electors numbers as at 11 November 2022

†The deviation of all wards are projected to be within +/-10% by the time of the 2024 local government election



Map prepared by:  
**VEC** Victorian Electoral Commission

Data use:  
Copyright © 2023 - State Government of Victoria, Department of Environment, Land, Water and Planning

Disclaimer: This content is provided for information purposes only. While every effort has been made to ensure accuracy and authenticity of the content, the Victorian government does not accept any liability to any person for the information provided.





No Through Road



Dr Jane Bartier experimenting with her weaving in Lake Modewarre

# No Through Road .. or .. This Way to the Lake

**Sylvia Maseyk**

“No Through Road” is a sign that appears to halt us in our tracks, but those who go beyond it may discover something interesting and beautiful where the road ends.

Lakes Modewarre and Murdeduke on the edges of Winchelsea are revealed down several roads bearing such signs.

Indigenous peoples once freely travelled to and around Lakes Modewarre and Murdeduke, and maintained the lakes, their shorelines, plants, fish, birds and animals. Now access for everyone is limited to the close shoreline along roads marked “No Through Road.”

Three Winchelsea artists have been walking, talking and working together at the lakes over the past 8 months. Dr Jenny Murray-Jones, Dr Jane Bartier and Sylvia Maseyk received 2023-24 Artists & Creatives grant funding from Surf Coast Shire to expand their artistic perspectives and undertake deep conversations about land and place. All three live in Winchelsea, and in this project seek to draw out edges, memories, boundaries and perspectives in the exploration of site. Each artist acts to expand their practice from a chosen perspective to multiply into documented conversations with each other.

Everyone has different experiences of enjoying, exploring and learning about lakes and shorelines.

Dr Murray-Jones is a Yorta Yorta/Baraparapa woman and a painter and weaver. Dr Bartier is an anglo woman and weaver, while Sylvia is a 2nd-generation arrival in Australia who draws and sculpts. All have different cultural perspectives on place, land ownership, and what land, water and sky mean to each of us personally and culturally.

The collective has participated in wider community discussions and continues to seek contributions about what the lake means from interested people in the local community.

In December the trio were invited to speak at a symposium at Deakin University’s Waterfront campus, auspiced by Platform Arts and Deakin, entitled WATER: A Field Trip Conversation, where attendees considered the intersection of art and science, the impact of water on various artistic disciplines, its wider implications on climate activism, First Nations sovereignty, ecology and research. Other speakers included Kiri Tawhai, Vicky Hallett, Elena Betros Lopez.



Reed necklace by Dr Jenny Murray-Jones

On 23 March 2024 at 2:00pm you are invited to meet the No Through Road collective on a visit to Lake Murdeduke where the three artists will speak about our work.

**To get further information about the lake visit, or to tell us your story about the lakes, or any “No Through Road” experiences, please email [watertalks23@gmail.com](mailto:watertalks23@gmail.com) or follow us on Instagram @ [nothroughroadcollective](https://www.instagram.com/nothroughroadcollective)**





# JOIN THE FUN!

## Winchelsea Auskick Centre

Eastern Reserve

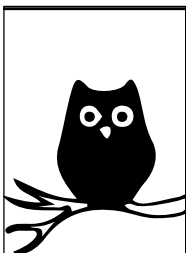
Thursdays

4:30-5:30pm

Please contact Colleen

0421 210 401

Scan the QR Code to register!



Café La Hoot

have you tried  
'owl' coffee?

1 willis st [cafelahoot@gmail.com](mailto:cafelahoot@gmail.com) 0407 528 999





# Join digital literacy sessions



## Surf Coast Shire

The Surf Coast Shire Council is working in partnership with the Torquay Library to provide free digital literacy sessions in February and March.

The sessions guide participants in the digital space including how to borrow eBooks and eAudiobooks, and access newspapers, and magazines online from the library.

Feedback during last year's Positive Ageing Month, and during consultations for the Council's Age Friendly Strategy, highlighted a need for more opportunities within our community to build skills in the digital space.

Cr Gary Allen said the sessions are a lot of fun and equip older participants with valuable skills. "Participants will learn how to access the library's live-streaming channel featuring lots of movies and documentaries," Cr Allen said.

"They are shown how to use the Busy Things app which has over 120 online learning games to play with their grandkids.

"This is part of the Council's commitment to age friendly communities and assisting people to age well in place. The sessions help anyone access the library's resources at any time.

"Sometimes physically getting to the library can be a bit of effort. Supporting people to master the online digital world,

means benefiting from the convenience that provides."

**Register for the following sessions run by Vicki Dunmore from the Torquay Library:**

**Winchelsea: Monday 25 March 10am to 12pm, Winchelsea Community House.**

**Moriac: Monday 18 March 10am to 12pm, Moriac Community Centre**

Morning tea is provided with participants to bring a tablet or laptop that can connect to the internet.

For more details and to book your spot contact, Surf Coast Shire Council Age Friendly Officer Rose Salvo via email [rsalvo@surfcoast.vic.gov.au](mailto:rsalvo@surfcoast.vic.gov.au) or phone 03 5261 0600.

Hello Winch, Moriac and Deans Marsh!  
Just letting you know that we still have some spots available for the digital literacy sessions. These free sessions will show you how to access lots of resources from the library via your laptop or tablet – newspapers, magazines, books and movies – ALL FREE. Morning tea included!  
Please contact me to register.  
Warm regards  
RoseSalvo Age Friendly Officer  
5261 0600  
[salvo@surfcoast.vic.gov.au](mailto:salvo@surfcoast.vic.gov.au)

## Victorian mosque Open Day to welcome thousands

### Victoria State Government

More than 35 mosques and Islamic centres across the state will be opening their doors to the community as part of the annual Victorian Mosque Open Day.

Victorian Minister for Multicultural Affairs Ingrid Stitt is encouraging Victorians to visit their participating local mosque on Sunday 25 February to celebrate the diverse cultures and religions that make up Victoria.

**The closest to Winchelsea is the Islamic Society of Geelong**

**45-47 Bostock Ave, Manifold Heights VIC 3218**

It is estimated that over 8,000 Victorians will attend statewide. Attendees can experience a range of activities throughout the day including information sessions on the Islamic faith, henna art, jumping castles and sausage sizzles.

Since launching in 2017, the Victorian Mosque Open Day continues to give more Victorians opportunities to learn about our Islamic communities. It celebrates our diverse communities and warmly welcomes everyone to share Islamic cultures and traditions.

WE'D LOVE TO SEE YOU AT  
**Winchelsea Playgroup**

EVERY SECOND THURSDAY AT ST. THOMAS'S ANGLICAN CHURCH, WINCHELSEA  
10AM - 12PM  
GOLD COIN DONATION  
BRING A PIECE OF FRUIT TO SHARE

TERM 1 PLAYGROUP DATES:  
22/2/24  
07/03/24  
21/03/24  
04/04/24

COME BE PART OF OUR FACEBOOK COMMUNITY



# Winchelsea Planting Guide

<i>Southern Victoria planting</i>	Feb	Mar
<b>Beans, Broad</b>		X
<b>Beetroot</b>	X	
<b>Bok Choy</b>	X	X
<b>Broccoli</b>	X	X
<b>Brussels Sprouts</b>	X	X
<b>Cabbage</b>	X	X
<b>Carrots</b>	X	X
<b>Cauliflower</b>	X	X
<b>Chicory</b>	X	X
<b>Cress</b>	X	X
<b>Endive</b>	X	X
<b>Kale</b>	X	
<b>Kohlrabi</b>	X	X
<b>Leeks</b>	X	X
<b>Onions</b>		X
<b>Onions, Spring</b>	X	X
<b>Parsley</b>	X	X
<b>Parsnips</b>	X	X
<b>Peas</b>	X	
<b>Potatoes</b>	X	
<b>Radishes</b>	X	X
<b>Rhubarb Crowns</b>	X	
<b>Salsify</b>	X	X
<b>Shallots, cloves</b>	X	X
<b>Silverbeet</b>	X	
<b>Spinach</b>	X	X
<b>Swedes</b>	X	X
<b>Turnips</b>	X	X



## Surf Coast Shire

### Tiny House on Wheels Pilot - Affordable Accommodation for Workers?

Australian housing affordability is in crisis, affecting all parts of the country, in regional, rural and city locations.

In May 2021, Council declared a key worker accommodation crisis in recognition of how a lack of affordable accommodation was impacting the economy and sustainability of local communities.

In an effort to provide more affordable and sustainable accommodation options, the council began its Tiny House on Wheels Pilot.

This will allow the council to test the conditions under which Tiny Houses on Wheels are allowed and regulated, which according to the Australian Tiny House Association, "may also encourage other local government areas to follow the same pathway".

The pilot will be running until 13 December 2026, so if you would like more information or to download the the THOW's resources visit the Tiny House on Wheels Pilot page, or email [tinyhouse@surfcoast.vic.gov.au](mailto:tinyhouse@surfcoast.vic.gov.au). You can also speak to our Planning team directly by calling 5261 0600



# MRP Steelworx

Matthew Partridge  
p 0418 672 334  
e mrpsteelworx@yahoo.com.au

**Welding Service**

- Onsite welding
- Farm maintenance
- Farm machinery & equipment repairs
- Cattle & sheep yards
- Custom built trailers
- Supply & install gates



5234 6585 0417 385 984  
For all your domestic & stock water.  
Also available for road and civil construction  
Local owned and operated.

52672192 R & K Creative Framing  
for all your framing needs

free quotes pension discount specialist in Age & Disability Modifications

Ray & Kim Jansen  
10 Witcombe st  
Winchelsea 3241

Ray The Home Maintenance HANDYMAN  
abn 47928623462

0414672192



## Winchelsea Supermarket

Trading Hours  
**Monday to Saturday**  
8.30am to 7.30pm  
**Sunday**  
10am to 7pm  
**Ph: 5267 2676**  
29 Main St, Winchelsea

## Antique Repairs

By **Doug Burns** est. 1976

- All Furniture
- French polishing
- Carving
- Veneering
- Wood Turning
- Porcelain



*Unusual Requests Welcome*

180 Barwon Terrace, Winchelsea

**0428 672 704**

ALL ABOUT

## Mowers & Chainsaws

Repairs to all makes and models of ride on mowers, domestic mowers, pumps, chainsaws, brushcutters and small engines.

Trading Hours: Mon - Fri 8am - 5pm Saturday 8am - 12 noon

**5267 2266** Cnr Princes Hwy & Lennox St Winchelsea

www.allaboutmowers.com.au  
accounts@allaboutmowers.com.au




## SOUTHERN GRAIN STORAGE PTY. LTD.

AG SUPPLIES FERTILISER GRAIN STORAGE SEED CLEANING

**(03) 5267 2351**

## Simco Plumbing and Gasfitting

24/7 Emergency service Ph:0400643976

- All General Plumbing and Gasfitting
- Roof and Gutters, Hot Water service changeover
- Split Systems, Air Conditioning and Wood Heaters
- Irrigation, Septic and Treatment plants
- Excavation, Bobcat and Tipper
- Rain water Tank installation
- Renovations and Extensions
- Gas conversions and servicing

Simon McGillivray  
Lic:109610. Free quotes, Fast and friendly service

## Winchelsea Men's Shed



**For The Community**  
Men's Shed Kindling/Offcuts  
Bags of Kindling/timber offcuts  
are available for pick up from  
the Men's Shed on Wednesday's  
from 9.30 to 2.30.  
If you need a delivery made you  
can call Bill on 0438 083 373.  
The price for a bag of kindling is  
now \$7.00 (up from \$5.00).  
**Nesting Boxes**  
Bird or animal nesting boxes are  
available from The Men's Shed.  
These can be made to order.  
Call in on any Wednesday  
to have a chat.

## contact us

### NEWS and ARTICLES ARE MOST WELCOME

Include name and address of the sender  
 Email [news@winchelseastar.org.au](mailto:news@winchelseastar.org.au)  
 Leave hard copy at IGA Supermarket

### DEADLINES

#### 5pm Fridays

4pm Sundays - hard copy articles left at IGA  
 6pm Sundays - sports results and weekend events

### FREE DIGITAL SUBSCRIPTION

[winchelseastar.org.au](http://winchelseastar.org.au)

### ADVERTISING

[advertising@winchelseastar.org.au](mailto:advertising@winchelseastar.org.au) 0408 102 802  
 600 online subscribers,  
 250 copies printed for outlets around Winchelsea

## follow us

### ONLINE

[winchelseastar.org.au](http://winchelseastar.org.au)

### FACEBOOK

[facebook.com/TheWinchelseaStar](https://facebook.com/TheWinchelseaStar)

### PRODUCTION

<b>Editors:</b>	Carrie Fogan, Yvonne Stevens, Judy Cameron
<b>Advertising:</b>	Sasha Gauntlett, Neil McInnes
<b>Design:</b>	Tony Phelps, Susan Corby
<b>Printing:</b>	Winchelsea Community House
<b>Website:</b>	Winch Websites

### COMMITTEE

<b>President:</b>	<a href="mailto:president@winchelseastar.org.au">president@winchelseastar.org.au</a> Mick O'Mara
<b>Treasurer:</b>	<a href="mailto:treasurer@winchelseastar.org.au">treasurer@winchelseastar.org.au</a> Cathy Cheadle
<b>Secretary:</b>	<a href="mailto:secretary@winchelseastar.org.au">secretary@winchelseastar.org.au</a> Tony Phelps
<b>Members:</b>	Linda Carter, Sasha Gauntlett, Neil McInnes, Judy Cameron, Yvonne Stevens, Carrie Fogan,

© Winchelsea Star Org. Inc. All rights reserved  
 Winchelsea Star Organisation Inc.  
 Reg. No. A0053999F, ABN: 75 941 529 279  
[winchelseastar.org.au](http://winchelseastar.org.au) PO Box 5, Winchelsea, 3241  
 Views expressed are not necessarily those of the  
 Winchelsea Star or its Committee. The Winchelsea  
 Star reserves the right to edit or not publish any article.



## You can write for the Star

We want the Star to inform, engage, inspire, and interest the residents of Winchelsea and surrounds. And we need your writings to get there.

The Star has no actual reporters or designated writers - we publish what you send us. If you have some news, an opinion, an interest or perspective, or a story - we'd love you to send it in for publication.

The Star loves to hear anything of direct interest to the Winchelsea community. The more local content we can put in, the better!

### How much can I write?

You can write just one article. You can start a new column about something you're interested in. You can send us a series of articles on a theme. What would **you** write about?

Your article can spread over 1 or 2 pages (approx 850 words) or you can write longer pieces and split them across multiple editions.

Add a photo or two, an article title and author's name (preferably).

### Can you publish my photos?

A picture is worth a thousand words - but context is very interesting too! If you have a photo you'd like in the Star, add a few words describing where, when, who, why and/or what.

### Ask permission to use photos

When you send us a photo, you give us implied permission for reproduction.

You have liability when publishing an image, so be sure you own the image or have written approval to use it. It is easy for copyright owners to find stolen images online, where the Star can be found.

### Legalities

Our Editors will not approve anything libellous (ie. when a false statement is published in written form and does harm to a victim). The Star is a community newspaper - 'for' and 'against' opinions on contentious topics are welcome, but attacking individuals or groups is not.

We look forward to hearing from you.

Simply email [editor@winchelseastar.org.au](mailto:editor@winchelseastar.org.au)



# Winchelsea Star

## COMMUNITY NOTICEBOARD

### FREE ADS

editor@winchelseastar.org.au or leave at Winchelsea IGA



#### FOR SALE

##### LAMBORGHINI R3 EVO 85 AC CAB/ 4WD/LOADER 4 IN 1

Locally owned 85h power, Deutz 4 cyl 2012 series engine  
Wet clutch with power shuttle, powershift  
Plenty of forward and reverse speeds  
Air cond cabin with pneumatic seat, sound system.  
Multi speed power take off, push button control.  
Three remote circuits  
On pirelli radial tyres 16.9 X 34 and 14.9 X 24 front  
Fitted with italian sigma iron level lift loader  
Four in one bucket, two prong hay forks.  
High strength loader and high lift, detachable.  
Recently serviced.  
LOW HOURS 550 ONLY.  
Pricing \$55500.00 Plus gst

**Rob Knuckey Tractors**  
0408520606

#### PICKLEBALL AT LTC

Wednesday evenings 7.00-8.30 & Thursday mornings 10.00-11.30  
\$5 pp. [to cover LTC hire]  
All equipment supplied, just wear suitable footwear.  
*All welcome!*  
Enquiries to Lesley Mathison on 0438672197

#### WINCHELSEA OP SHOP

No Furniture Accepted!  
Donations of good clean items accepted Sat-Mon only, 10am-2pm  
Shop Hours  
Fri-Mon, 10am-4pm

#### 'WHAT A GREAT IDEA!'

Timber coffee cup holders available from participating coffee shops or Winchelsea Lions 0476 475 422  
Saves on landfill and 100% funds raised go back into the community.  
\$2 for 2 cup holder,  
\$4 for 4 cup holder



Join us at the Uniting book sale.

#### BOOK SALE

The next Book Sale will be on Friday 1st March and Saturday 2nd March at Uniting Barwon Grovedale, 272 Torquay Road, corner of Reserve and Torquay Roads 10.00am – 2.00pm.

A great range of new and old stock to browse through and all books are only **\$1.00!**

We look forward to seeing you there.

**Fay Lake, Uniting Op Shops**

#### WINCHELSEA TENNIS CLUB

##### Junior Coaching

The Club is offering Junior Coaching sessions every Monday from 3.30p.m. with the experienced Nicole Mullen, at a very reasonable \$10 per session!

Junior Coaching is open to all school age kids, but Nicole will also coach other age groups, if required!

So get along and have a chat to Nicole about tennis coaching and improving your kids and, maybe, your own game!

##### Social Twilight Tennis

We are also having Social Twilight Tennis on Monday evenings from 6.00p.m. Starting 12th February until the end of March (end of Daylight Saving).

Come along for a social hit, meet some new people and enjoy a relaxing evening of tennis!

All Welcome!

#### FOR SALE

##### 2019 HOLDEN COLORADO LTZ

- 51,000km
- Transmission cooler
- Brand new tyres (only done 5000km)
- Constant 300kg springs in rear with new shocks
- Dual battery set up with red arc BCDC charger
- Redarc electric brakes
- Tub rack
- 2 x Anderson plugs
- Wired safety Dave camera
- Car will come serviced and RWC



\$45,000 ONO  
Queries welcome  
Please contact Dallas 0448 852 909

## Stribling Reserve Basketball Stadium

### Closure due to mould

Surf Coast Shire Council has closed Lorne's Stribling Reserve basketball stadium due to mould underneath a section of floorboards.

#### Basketball stadium

- Mould treatment specialists were on site on Monday 12 February sealing the stadium space and removing equipment. Both stadium and equipment will be treated to remove mould.
- Sports equipment has been stored temporarily in containers on-site. This equipment is available for use by the school.
- Specialists have found moisture under the floor and are considering treatment options.
- Factors contributing to the moisture might include tree litter blocking pipes and pits, and rain runoff from the site driveway. Inadequate ventilation is also a factor in mould growth.

#### Stribling Reserve Pavilion

Stribling Reserve Pavilion is not impacted and remains open to users.

#### Health advice

- We have liaised with the Barwon South West Public Health Unit in relation to potential health risks associated with mould exposure.
- Health authorities advise that most people are unlikely to be affected by exposure to mould.
- For some people exposure to mould spores can lead to temporary symptoms such as nasal congestion, sneezing, coughing, and wheezing. They can also increase the risk of respiratory infections.
- There is a higher risk for people with allergy to mould, or who have asthma or lung disease, chronic illnesses such as diabetes, or weakened immune systems.
- Any stadium users with respiratory or related concerns should consult a GP.
- Council is liaising with the Lorne P-12 College, members of the Stribling Reserve Community Asset Committee, and Stribling Reserve user groups.

#### More information

We will provide further updates as we work through the next steps. We will send another newsletter to users and update our webpage at [surfcoast.vic.gov.au/StriblingStadium](http://surfcoast.vic.gov.au/StriblingStadium)

**DEATH NOTICE**

**VERITY Robert**

**28.08.1942 – 14.01.2024**  
PASSED AWAY AGED 81

Dearly loved husband of Helen (Spike) (dec.).  
Loving father of Debra, Graham, Dean & Samantha.  
Father-in-law to Sharryn. Cherished grandfather to Ayden,  
Sharni, Corey, Ashlee, Sara & Joshua. Great grandfather to Lance,  
Hallie, Luke, Leo, Percy, Flynn, Maya & Coen. Greatly missed.

Memorial Service to be held at  
Winchelsea House Community Centre, Winchelsea  
at 3pm on Friday 8th March.

## Grants for your business in 2024

Each year there are hundreds of grants across local, state, and federal levels that are available to businesses.

To ensure that your business isn't missing out on programs that could help you grow, improve, and innovate, the Victorian Chamber of Commerce and Industry has released its list of Top Grants for 2024.

The Victorian Chamber has a Grant Finder tool available for members to help find and determine your eligibility for these programs.

Here you can find grants targeted across a number of sectors including Small Business, Digital Economies and Hospitality, as well as dedicated programs to support First Nations Businesses, promotion of Energy efficiency as well as those supporting Wellbeing and Mental Health initiatives.

Here are our tops picks:

- Self-Employment Assistance provides support to people interested in starting their own business or who need help to refocus an existing small business.
- Regional Hospitality Traineeship provides incentives to regional Victorian hospitality and tourism businesses to take on trainees.
- Small Business Technology Investment Boost allows small businesses to claim a 20 per cent bonus deduction on technology expenditure to help digitise their business.

To read the full list visit the Victorian Chamber website, and to find out more go to the dedicated about Programs and Grants page.

## Scams impersonating the ATO up by 400%

The Australian Taxation office has announced that it will no longer include hyperlinks in any of its unsolicited SMS messages by Tax Time in 2024.

This is in response to the significant increase in SMS scams impersonating the ATO by cybercriminals, which increased by a whopping 400% in the 2022-23 financial year.

It was reported there were over 25,000 ATO impersonation scams that were reported, luckily those that paid money to a scammer only numbered 28, a 66% decrease.

To find out more and to stay up to date with how to identify a scam, and what are some of the best ways to protect your identity, visit the ATO's dedicated Identity security and scams page

## What is the Business Concierge service?

The free Business Concierge service is designed to make the experience of submitting a Business Proposal to the Surf Coast Shire as smooth as possible.

You can submit a business proposal on the Surf Coast website, contact the Business Concierge directly on 5261 600 or [business@surfcoast.vic.gov.au](mailto:business@surfcoast.vic.gov.au).

## Grants available to celebrate Young Victorians

The skills and achievements of Victoria's young people will be on show right across the state later this year at a month-long festival supported by the State Government.

Minister for Youth Natalie Suleyman today announced an investment of \$220,000 to deliver up to 110 events across the state for and by young Victorians.

Grants of \$2,000 are available for youth organisations, local government and schools to partner with Victorians aged 12 to 25 to create a wide variety of events for young people in their communities.

Youth Fest kicks off in September and this investment will support young people to organise and deliver events, showcase their skills, share ideas, build social connections, and expand their networks.

In 2023, the Youth Fest program delivered 111 activities focused on art, music, sport and theatre, as well as recreational and community festivals, giving young Victorians the chance to have their voices heard.

Previous grant recipients include the Victorian Afghan Students Association for an Afghanistan's Got Talent event that included an art exhibition, short story competition and singing contest.

In regional Victoria, Campaspe Cohuna Local Learning and Employment Network hosted the Kyabram Youth Expo, which included an art exhibition and music performances, along with stalls providing information on local health, welfare, sports organisations, and youth services.

**Applications are open until 15 March. To apply and find out more visit [youthfest.vic.gov.au](https://youthfest.vic.gov.au).**

## Head start is helping more students earn their wings

More students will get the skills they need and walk straight into the jobs they want, thanks to the expansion of a State Government program allowing students to finish Year 12 while pursuing paid training.

Head Start is a nation-leading program that gives students who are eager to enter the workforce the opportunity to complete an apprenticeship or traineeship while finishing school.

Completed alongside a VCE, VCE Vocational Major or Victorian Pathways Certificate, the initiative offers students paid on-the-job training while providing employers with well-matched and highly motivated young workers.

Last year, 288 schools had at least one student start a school-based apprenticeship or traineeship, with the most popular choices being carpentry, hospitality and electrotechnology.

More than 3,300 students participated in Head Start in 2023, which carefully matched them with employers to deliver a successful and rewarding placement for everyone.

Head Start students get ongoing support from the Head Start team through Year 11 and 12, helping them to manage the demands of work, school and training.

Nearly 3,000 employers have hosted a Head Start school-based apprenticeship or traineeship. 96 per cent of participating employers with fewer than 20 employees say they would recommend the program.

The expansion of Head Start to all government secondary schools following the successful pilot is part of the Labor Government's \$639 million investment in reforms to senior secondary pathways. To find out more about Head Start, including how to provide an employment opportunity, visit [apprenticeships.vic.gov.au/head-start](https://apprenticeships.vic.gov.au/head-start).

**Call 1800 226 226  
if you have any  
urgent animal  
welfare needs.**





# WINCHELSEA KYOKUSHIN KARATE

## KICK START CLASSES



for Kids ages 4 to 8 years of age

When: 5.30pm to 6.15pm

Thursdays (school terms)



Where: Winchelsea Primary  
School (LTC) 15 Gosney St

First 2  
Classes  
FREE!

Contact: SEMPAL Michael Winn Ph: 0428 220 626

Email: [winchelseakyokushin@outlook.com](mailto:winchelseakyokushin@outlook.com)

Winchelsea Kyokushin Karate

**Kyeema**  
Rural Fencing Pty. Ltd.

Jason Armstrong & Jay Hawker  
1080 Prices Lane, Ombresley, Victoria, 3241  
0419 565085 (Jason)  
0416 585817 (Jay)  
[kyeemafam@kyeemafam.com.au](mailto:kyeemafam@kyeemafam.com.au)  
Also incorporating domestic and rural tree trimming services.

**RICHARDSONS**

5234 6585 0417 385 984  
For all your septic tank, grease traps  
and interceptor pits servicing.  
Locally owned and operated

**CONCRETER**  
Alister Aitken

No job to big or small

- Driveways - Carports - Crossovers - Footpaths - Sheds Slabs - Colored Concrete - Concrete sealing - Exposed Aggregate - & more -

Call or text for a no obligation free quote

Servicing our local Winchelsea & Surrounding Areas

[alaitken.aa@gmail.com](mailto:alaitken.aa@gmail.com) or Alister - 0411 871 950

A.B.N 47 228 574 460

Est. 2011

Dance  
**ENROLMENTS  
NOW OPEN!**  
Winchelsea  
Dance Classes  
**REGISTER NOW**

JAZZ - THEATRICAL TAP - HIP-HOP  
CLASSICAL BALLET - CONTEMPORARY  
Pre-School - Adults  
Beginner - Advanced Levels

[www.melsdancecentral.com.au](http://www.melsdancecentral.com.au)

mainly music est. 1990

Fun, Interactive music sessions for pre-school children (0-4 y.o.) and parents/caregivers

When: Mondays from 10 to 11 am  
(runs during school terms)

Where: St Thomas' Hall  
25 Barwon Tce.

To Enquire ring: 0407838256



# Winchelsea Churches



## St John's Catholic Church

Father Joseph Panackal  
0404598558

Harding St, Winchelsea 3241  
MASS TIMES

6pm Sat. FEB. 17, 24  
6pm Sat. MAR 2, 9, 16, 23, 30

## St Thomas' Anglican Church

Rev'd Phil Jacobson  
0477 672 042

stthomaswac@gmail.com  
Barwon Tce, Winchelsea  
Service 10am

## Winchelsea Uniting Church

0475 777 301  
uca.winchelsea@gmail.com  
Hesse St, Winchelsea 3241  
Services 9.30am Sundays

### Thought for the Week

"When we bring pleasure to another human being we have followed in God's footsteps and we've had a little part in serving Him who loves us—for I'm very sure it's true that in serving those around us, we serve and please Him, too."

**John Bader,**  
Former U/C Accredited  
Lay Preacher

## Washing machine rebates now available for residential customers

### Barwon Water

Barwon Water's commitment to help more customers be water efficient and save money is expanding with the launch of a new WaterSmart Washing Machine Rebate program.

Managing Director Shaun Cumming said applications are open for rebates of \$250 for eligible customers to upgrade their old washing machine to an efficient front-loader.

"The rebates are available to residential customers who have purchased a minimum 4.5-Star WELS and 4-Star energy rated front loading washing machine to upgrade their old machine on or after 1 December 2023."

He said Barwon Water was addressing the challenge of finding more water for a growing population and the impact of climate-dependant sources of water becoming less reliable in a hotter climate.

"Improved water efficiency has an important role to play in meeting this challenge, which is why we are looking to support our customers to improve water efficiency and preserve our precious resource."

Mr Cumming said on top of the rebates, upgrading to a more efficient washing machine meant customers could also be saving about 26 thousand litres of water and \$62 off Barwon Water bills a year, and up to \$107 annually in energy savings based on one warm water load a day, helping to ease cost of living pressures.

Mr Cumming said the rebates were an investment in water efficiency projects that would ultimately save residential customers' money and contribute to Barwon Water and its customers to achieve permanent water savings.

To be eligible, residential customers must have a property connected to mains drinking water charged a residential water charge, provide proof of purchase and have purchased and installed an eligible washing machine on or after 1 December 2023 and prior to applying for the rebate.

More information about the rebate application process and terms and conditions is available online at: [www.barwonwater.vic.gov.au/water-and-waste/saving-water/water-smart-washing-machine-rebates](http://www.barwonwater.vic.gov.au/water-and-waste/saving-water/water-smart-washing-machine-rebates)

## Measles alert for Melbourne Airport and passengers

### Victoria State Government

A case of measles has been reported in a returned overseas traveller who transited through Melbourne Airport while infectious.

The case transited through Melbourne Airport's T2 international terminal between Wed 14 February at 22:50 and 00:20 on Thurs 15 February. The case also went through the T1 domestic terminal on 15 Feb between 13:30 and 14:35 before travelling to South Australia.

Measles is a highly infectious viral illness that spreads easily among those who are not fully vaccinated.

Young children and adults with weakened immune systems are the most at risk of serious illness.

People who attended the exposure sites are urged to seek medical care if they develop symptoms, and to wear a mask and call ahead to ensure they can be isolated from others.

The illness usually begins with fever, runny nose, cough and conjunctivitis, followed by a rash. The characteristic maculopapular rash usually begins three to four days after the first symptoms, generally starting on the face and then spreading to the rest of the body.

"People who were at any of the exposure sites should monitor for symptoms and seek medical attention if they become unwell," Victoria's Chief Health Officer Clare Looker said.

Recent Victorian cases of measles have been identified in people who were not fully immunised against measles and who had travelled overseas or been in contact with returned overseas travellers.

Measles is rare in Australia because vaccination is effective in preventing the disease.

"People who are planning to travel overseas should ensure they have received appropriate vaccinations, including the measles-mumps-rubella (MMR) vaccine if they don't have a history of two previous MMR vaccinations," Dr Looker added.



# The Climate Report

A net-zero world will be more peaceful, it's assumed – but first we have to get there

Judy Cameron

The final text of the latest UN climate summit COP28, now called the UAE consensus, called for countries to “transition away from fossil fuels in energy systems, in a just, orderly and equitable manner, accelerating action in this critical decade, so as to achieve net zero by 2050 in keeping with the science”.

Many felt that this “consensus” was more of a compromise, forced by the fossil fuel industry in the face of an ever more evident climate crisis.

Meteorologists have confirmed that 2023 was the hottest year on record and with the added influence of El Niño, the warm phase of a natural cycle in Earth's climate, 2024 could be humanity's first year in which warming exceeds 1.5°C above the pre-industrial average – the target of the 2015 Paris agreement.

Investment in green energy continues to accelerate in those countries that can afford it. By 2030, scientists say global emissions need to have fallen by 43%.

In six years, will we look back at 2024 as a key inflection point when the world did start to phase out fossil fuels? Or will it be seen as yet another opportunity missed?

## A significant omission

In a recent study, the International Energy Agency (IEA) identified the triple challenges of “energy security, climate change and rising geopolitical risks”.

It is unusual for the IEA, which began as an OECD institution to manage energy supply after the 1970s oil crisis, to highlight “geopolitics”. Although it has warned of a “disorderly transition” before, its 250-page report on the world's energy outlook in late 2023 only mentioned geopolitics four times.

This is a wider problem within energy research. A recent analysis revealed that most pathways to net zero emissions do not consider what influence international relations will play. Those that do, see it as a malign influence that reduces cooperation and increases the costs of technology.

In 2019, the IEA's sister organisation, the International Renewable Energy Agency, published a report which argued that, in a low-carbon future, energy security would not be the challenge it is today because most countries will generate renewable power at home and be less reliant on exporter countries.

A world powered by renewable energy may not be as prone to international competition as ours. But the challenge is getting there from our fossil fuelled system, riven with insecurity and a tinderbox of geopolitical conflict.

Unless managed, the transformation of energy systems is unlikely to be just, orderly or equitable – and this will slow the rate of decarbonisation even as science indicates it must rapidly accelerate.

## Managing the mess

It's useful to think about the transformation of an energy system in three phases. Phase one is the present system, phase three is where we want to end up. Phase two, the transition, is the hard bit.

In phase one, the world operates an energy system dominated by fossil fuels supplied by a relatively small number of exporter states that can manipulate fears over secure and affordable supplies in other countries.

In phase three, a net-zero world powered by low-carbon energy, fossil fuels play a marginal role if any and so will not influence international relations to the same extent.

The present energy crisis, with its record heating and electricity bills, is a crisis borne of a system powered by coal, oil and gas. For some, such as the EU, it is a clarion call to accelerate the transition and improve energy efficiency to reduce reliance on these fuels. For others, such as the Gulf States, the answer lies in pumping more oil and gas.

The world is entering phase two, the messy stage in which the world endeavours to phase out fossil fuels while building an energy system powered by solar, wind and other renewable sources in a fair and orderly way – but at a sufficient pace to rapidly decarbonise society.

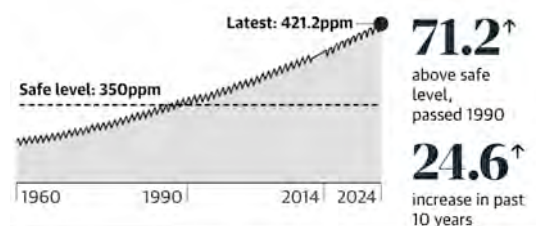
This low-carbon transition is also a source of competition. Access to critical materials for making electric vehicles and other green technologies, and control of these supply chains, is becoming a key issue, with a form of “green protectionism” emerging in some countries. For many emerging economies, access to energy of any kind is the most pressing challenge.

While all of this is happening, the world must contend with the effects of climate change accelerating – bigger floods, fires and droughts.

Will self-interest win out, frustrating progress towards a net-zero future? Or will we strengthen and make accountable multilateral institutions, recognising that there are no winners in a rapidly warming world?

**The most important number of the climate crisis:  
421.2 Atmospheric CO2 in parts per million, 5 Feb 2024**

Source: National Oceanic and Atmospheric Administration NOAA



Republished, via The Conversation, through the Creative Commons licence

Published: January 23, 2024 1.56am AEDT

Author: Michael Bradshaw, Professor of Global Energy, University of Warwick



## Community Climate Resilience Forum to Empower and Prepare

### Community Climate Resilience Forum Event

Thursday, 22 February

5.30-7.30pm

Common Ground Project,

675 Anglesea Rd, Freshwater Creek

Tickets: \$10

Registration: <https://www.geelongsustainability.org.au/product/community-climate-resilience-forum>

In the face of escalating climate challenges, Geelong Sustainability is proud to partner with Common Ground Project and announce the Community Climate Resilience Forum taking place on Thursday 22 February from 5.30-7.30pm.

As an event partner of the National Sustainable Living Festival, this forum brings together a distinguished panel of experts to discuss and address the threat of climate-related disasters in our region.

The panel, which includes Wayne Aylmer, CFA Surf Coast Catchment Commander; Amy Tacey, Common Ground Project Food Hub Coordinator; Libby Skeels, Psychologist, Psychology for a Safe Climate, and facilitated by Karina Donkers, Project Coordinator from Geelong Sustainability, will delve into topics crucial for our community's wellbeing in the event of a climate disaster.

Participants can expect insightful discussions on the threat of climate disasters in our region, the role of the community in preparing for disasters, examples of community-led climate

action, and practical ways to get involved both at home and within the community.

"Climate-related emergencies and the stress they impose on our community are on the rise. It's imperative that everyone feels empowered and prepared," says Dan Cowdell, CEO, Geelong Sustainability. "Strength during these uncertain times comes from community readiness, awareness and action. Our aim is to support our community in building their resilience and preparedness in the event of a climate disaster."

The event will provide a platform for attendees to hear from a diverse panel of professionals, each bringing unique perspectives and experiences in building climate resilience. These experts will share their knowledge and insights, offering valuable guidance on navigating the challenges posed by climate-related disasters.

The Community Climate Resilience Forum is not only an opportunity for education and awareness, but also a chance for attendees to connect and network with like-minded community members. Common Ground Project will enhance the experience with delicious finger-food prepared for the event. Geelong Sustainability encourages everyone to join this crucial forum to gain practical knowledge, connect with the community and contribute to building resilience against the impacts of climate change.

Celebrating their 25th year, the National Sustainability Festival aims to accelerate the uptake of sustainable living and address the global climate and biodiversity emergencies through their amazing lineup of speakers, advocates, artists and performers.

# More choice of cars to save on fuel

## Infrastructure, Transport, Regional Development and Local Government

The Federal Government is delivering more cars that are cheaper to run, giving motorists choice by introducing a New Vehicle Efficiency Standard for Australia.

The Government will consult on the preferred model for a month and introduce the legislation as soon as possible, with the new cost saving rules to come into effect by 1 January 2025.

The US has had a similar policy in place for fifty years. But because of a decade of delay and denial, Australia still stands alongside Russia as one of the only advanced economies without the Standard. This is costing families and businesses thousands of dollars at the petrol pump.

The New Vehicle Efficiency Standard will push car makers to give Australian motorists more choices of new cars, utes and vans that use less fuel and that have until now only been available to buyers in overseas markets.

The preferred model for the New Vehicle Efficiency Standard, available on [cleanercars.gov.au](http://cleanercars.gov.au), has been under development since the Government committed to the Standard last year - to ensure it strikes the right balance in giving more choice while using less petrol.

If Australia catches up with the Standard in the US. by 2028, Australians stand to save about \$1000 per vehicle per year.

The Standard will only apply to new passenger and light commercial vehicles, not used or existing vehicles. They work by providing car companies with targets for average emissions per kilometer from new vehicles sold.

The New Vehicle Efficiency Standard will deliver more vehicles with the latest engine and design technologies to ensure lower fuel bills, meaning bigger savings at the petrol pump.

The Impact Analysis and ways to have your say are available at [www.cleanercars.gov.au](http://www.cleanercars.gov.au)

## New Vehicle Efficiency Standard

---

### Frequently asked questions

A New Vehicle Efficiency Standard (or fuel efficiency standard), incentivises car companies to supply new cars that use less fuel per kilometer. Under the Standard, each vehicle manufacturer has a set average CO2 target for the vehicles they produce, which they must meet or beat. Over time, the CO2 target is lowered and in order to continue to meet or beat the target, companies must provide more choices of fuel-efficient, low or zero emissions vehicles.

#### **When will Australia have a New Vehicle Efficiency Standard?**

An Australian New Vehicle Efficiency Standard is expected to come into effect from 1 January 2025, and will have Australia 'catch-up' to comparable markets, including the United States, by around 2028.

#### **How much money will motorists save?**

- New vehicles will use less fuel per kilometer. An average new vehicle purchaser in 2028 would save \$5,710 over five years.
- Over the life of a vehicle, the policy will provide around \$17,000 in savings per new vehicle.

The fuel saving potential is greatest for those living in regional Australia, where average driving distances are longer. For example, by 2028, the average driver in the Macedon Ranges, Victoria that uses a new car with lower emissions could save around \$2,000 a year in fuel costs.

#### **Will a NVES increase the price of cars?**

No. There is no evidence to suggest that a New Vehicle Efficiency Standard will increase vehicle prices. In jurisdictions that have had a New Vehicle Efficiency Standard in place for some time (around 50 years in the case of the US and Canada), real-world evidence has not shown an increase in price for consumers in the cost of cars.

#### **Will a New Vehicle Efficiency Standard impact my existing car?**

No. The New Vehicle Efficiency Standard only applies to new vehicles. Over time, new vehicles will filter into the second-hand market, improving the efficiency of Australian vehicles overall.

#### **Will I still be able to buy a ute or 4WD that can tow my trailer and boat?**

Yes. A New Vehicle Efficiency Standard allows suppliers to choose how they meet the emissions reduction target. In other countries with a New Vehicle Efficiency Standard, 4WDs and utes are still widely available. Even though the EU market has a stringent standard in place, vehicle models such as the Toyota Hilux and Landcruiser and Ford Rangers continue to be sold. The situation is similar in the US, where Ford Rangers, Toyota 4Runners, Tacomas and Tundra utes are available today.

As technology improves, vehicles will continue to transition to more efficient, low or zero emission technology.

#### **Will a New Vehicle Efficiency Standard ban vehicle models?**

No. A New Vehicle Efficiency Standard would not ban any vehicle models. A New Vehicle Efficiency Standard is about giving Australians more choice of fuel-efficient, low and zero emission vehicles.

#### **How will people in regional and remote areas benefit from a New Vehicle Efficiency Standard?**

A New Vehicle Efficiency Standard will help deliver savings to those Australians who use more fuel. Typically, people living in regional Australia drive further than those in the metropolitan areas, and tend to buy more fuel as a result. Average new car buyers in regional and remote areas travel longer distances and will have fuel savings up to 20% higher than buyers in major cities.



# New Vehicle Efficiency Standard

February 2024

## What are we doing?

- Australia is one of the only advanced economies without a New Vehicle Efficiency Standard.
- Car makers send their most advanced and efficient cars to other countries because we have no standard in place.
- The Government has been consulting on what standard to put in place. We released a consultation paper in April 2023 setting out the different factors to be considered.
- The Government has now released an Impact Analysis. The Impact Analysis lays out three options. We are seeking feedback from the public on the options by early March.
- The Government's preferred option would see Australia catch up to the United States by around 2028.

### The preferred option will deliver:

- Around 369 million tonnes of abatement by 2050.
- Around \$108 billion in fuel savings to Australians by 2050:
  - An average new car buyer in 2028 will cut their annual fuel costs by around \$1000.
  - EV drivers could also save around \$350 per year in maintenance.
  - An average vehicle purchaser in 2028 will save \$5,710 over 5 years.
  - Over the life of a vehicle, the preferred option will provide around \$17,130 in savings.
- Around \$5.5 billion in health savings by 2050.
- Improved Australian fuel security.

## What is a New Vehicle Efficiency Standard?

A NVES is a regulatory obligation on car makers to supply vehicles that on average meet a certain CO<sub>2</sub> g/km emissions target. The target is reduced over time, which encourages suppliers to provide better vehicles.

- For each vehicle that a supplier imports that beats the target, the supplier earns credits.
- For each vehicle that a supplier imports that miss the target, the supplier gets debits.

Credits can be used to offset debits. Net credits can also be traded with other suppliers.

The Standard works as an average across a supplier's fleet. If they import too many polluting cars, they can offset this by importing more lower emissions cars or by trading credits. In time, left over debits turn into a penalty.

### Key points:

- The Standard only applies to new, light vehicles (i.e. cars, SUVs, 4-wheel drives and utes).
- No vehicles are banned.
- The Standard sets two targets, one for passenger vehicles and SUVs, and a higher target for most utes and vans. Targets are also adjusted for specific vehicle weights to reduce the disadvantage that heavy vehicles have.
- A NVES is a supply side measure – it encourages car makers to provide more fuel-efficient vehicles.

## Next steps:

Following consultation, the Government will introduce legislation as soon as possible to put in place a Standard.

# SERVICES AND ACTIVITIES IN WINCHELSEA

## VLINE TRAIN SERVICES

### TO MELBOURNE:

Mon - Fri 6:41 am, 7.57am, 11:14am, 2:08pm, 7:23pm  
Sat - Sun 9:26am, 1:30pm, 7:18pm

### TO WARRNAMBOOL:

Mon - Fri 8.56am, 11.55am, 2:50pm, 5.27pm,  
6:45pm, 8:50pm  
Sat - Sun 8:47am, 2:46pm, 8:34pm



## COUNTRY WOMEN'S ASSOCIATION

7pm second Wednesday of month  
Winchelsea Senior Citizens' Hall



## WINCHELSEA SES

Every Wednesday  
Visitors and inquiries welcome  
0408 102 802



## WINCHELSEA AND DISTRICT COMBINED PROBUS CLUB

Meets 1st Monday of the month at 10am.  
Senior Citizens Rooms,  
Harding St, Winchelsea.  
New members always welcome.  
Enquiries Linda 0439 817 263.

## WINCHELSEA TRANSFER STATION

55 Cressy Road, Winchelsea

Monday	Closed	Tuesday	2pm-4pm
Wednesday	Closed	Thursday	2pm-4pm
Friday	Closed	Saturday	1.30-3.30pm
Sunday	9.30-12.30pm		

All waste disposal sites are closed on Christmas Day,  
but open on other public holidays that fall  
during their normal operating hours.

[www.surfcoast.vic.gov.au/disposalsites](http://www.surfcoast.vic.gov.au/disposalsites)



## WINCHELSEA GIRL GUIDES

Our Unit meets at the Catholic Church Hall,  
Harding St Winchelsea each Monday 4.30pm-6pm  
All girls 5yrs- 15yrs Welcome!  
Contact Yvonne Orchard 0448 672 630  
or Bonnie Stokes 0401 386 274



## 1st Modda & 1st Winchelsea SCOUT GROUP

**Joey's:** Tuesdays of school term 5-6pm  
**Cubs:** Mondays of school term 6:30-8pm  
**Scouts:** Tuesdays of school term 6:30-8:30pm  
All at Modewarre Hall, Cape Otway Rd  
**Venturers:** Wed at Walton's Rd Venturer Den  
Contact Marie McPadden 0409 330147

BUS TO



THE HUB

For reservations on the weekly bus  
to the Eastern Reserve Hub,  
please phone 52671202.

## SURF COAST MOBILE LIBRARY

Hesse St, Fridays, 2pm-5pm  
Surf Coast Mobile Library  
parked in Hesse Street (outside Shire Hall)  
Fridays between 2:00 and 5:00pm  
unless it is a Public Holiday.

## WINCHELSEA TAXI

0429 672 888 or 5267 2888

Wheelchair accessible  
10 seater bus available.

## WINCHELSEA PLAYGROUP

Every second Thursday 10am-12pm  
St Thomas Anglican Church Hall  
cnr Barwon Tce and Hopkins St, Winchelsea  
Contact: Danni Menzies 0432019944  
[winchelseaplaygroup@gmail.com](mailto:winchelseaplaygroup@gmail.com)  
Facebook - Winchelsea Playgroup 2019  
**New families welcome**



## Winchelsea Community House and Shire Hall

Hours: Monday-Friday 9.00am -2.00pm

Address: 28 Hesse Street, Winchelsea

Phone: 52672028

[www.winchhouse.org.au](http://www.winchhouse.org.au)

Email: [reception@winchhouse.org.au](mailto:reception@winchhouse.org.au)

### Singing Group

When: Wednesday afternoons 4.45pm-6pm

Next session: Wednesday 21st Feb, 2024

Winchelsea Shire Hall Space

Term 1 2024 8 Weeks

Cost \$60 per term or \$50 concession Under 16 free

Bookings now open [reception@winchhouse.org.au](mailto:reception@winchhouse.org.au)

### Chatty Cafe

When: Friday mornings 10.30am-12 noon  
(during school terms).

Next Session: Friday 23 February, 2024

Winchelsea Shire Hall Space

No bookings required.

We will have our Chatty Café Volunteers present to welcome you.

### Tai Chi - Experienced

When: Friday mornings 9.30am-10.30am  
(during school terms)

\$10 per session

Next Session Friday 23 Feb, 2024

Email: [reception@winchhouse.org.au](mailto:reception@winchhouse.org.au)

### Painting Class with Louise Hall

A class that progresses through a range of water-based mediums, with a dual focus on subject matter and materials.

Winchelsea Community House Star Room

Thursdays 1-3pm

Cost \$495 All materials provided

Bookings: [Hinterlandartschool@gmail.com](mailto:Hinterlandartschool@gmail.com) 0493 479 447

### Sound Healing

When Wednesday 13 March, 2024

\$40 per session. Bookings now open

Please call Vicki on 0400 149 749

Winchelsea Shire Hall Space

Email: [reception@winchhouse.org.au](mailto:reception@winchhouse.org.au)

### Introduction to Fermenting

In this session you will learn make two ferments (sauerkraut and kvass) to take home as well as learning about their benefits and uses.

Small group (Max 4 participants only).

Date: Saturday 16 March, 2024 12noon-2pm

Cost: \$55 per person All ingredients supplied

Winchelsea Shire Hall Kitchen

BYO: 1-2 clean teatowels, Apron, 2-3 Large Jars,

Wide-mouthed bottles eg passata bottles (2-3)

Pestle if you have one, Notebook and pen

Bookings email: [reception@winchhouse.org.au](mailto:reception@winchhouse.org.au)

### Crochet Group

When: Alternate Saturday afternoons

1.30pm, Winchelsea Community House Space

\$5 per session

Next Session Saturday 24 Feb, 2024

### Knitting Group

When: Thursday mornings 10.30-12 noon

(during school terms)

Next Session: Thursday 15 Feb, 2024

Come along and learn to knit or bring your knitting project and come and chat with others.

Winchelsea Community House Space

### Tai Chi - Beginners

When: Friday mornings 9.00am  
(during school terms)

\$10 per session

Next Session: Friday 16 Feb, 2024

### Gentle Movement Classes

When: Mondays 1pm

Cost \$5 per session

Next Session: Monday 19 Feb, 2024

Please register your interest

[reception@winchhouse.org.au](mailto:reception@winchhouse.org.au)

Winchelsea Community House Space

### Be Connected (Free Digital Skills Building program)

Friday mornings 11.30am

Free to attend but please book in

Winchelsea Community House Space

### Asthma and Anaphylaxis

Saturday 2 March, 2024

Cost: Both courses \$130

Winchelsea Community House Space

8.30am (approx. 5.5 hours)

Bookings: [reception@winchhouse.org.au](mailto:reception@winchhouse.org.au)

Community Houses such as ours provide programs and activities to learn new skills, brush up on your existing skills and more than anything to connect with others in your community and reduce social isolation. New skills may help you with employment and build your confidence to in turn help others. Activities such as singing and sound healing help your mind and reduce any unwanted stresses. Have a think about doing something for yourself and join in our activities.

*direct*  
**TEMPORARY FENCING**

FOR HIRE - SUPPLIED & ERECTED - 7 DAYS  
GEELONG - BELLARINE - COLAC - SURF COAST  
PHONE CAM 0417 310 800

**DownRyte Excavations**

- Excavations
- Drilling and Piling
- Rock Placement
- Tree and Stump Removal

Sean Hunwick  
Mobile: 0409 447 288  
Email: downryte@activ8.net.au

**NO MATTER WHAT YOUR PROBLEM, DODDS ELECTRIX CAN DEFUSE THE SITUATION.**

RURAL, INDUSTRIAL, COMMERCIAL, DOMESTIC  
PHONE 0438 887 360  
EMAIL: DODDSY@FASTMAIL.FM  
PO BOX 36 BIRREGURRA, VICTORIA 324  
REC: 17520 ABN: 64 581 250 880

**WINCHELSEA CONCRETING**

• Driveways • Sheds • Decorative Concrete • Raft Slabs

**Robert Murphy**  
0438 235 237  
winchelseaconcreting@outlook.com

**Knuckey's Winchelsea**  
Ph: 5267 2011

Knuckey's have in stock a complete range of batteries to suit tractor, heavy machinery, cars, utes

The largest range of the best oil for your vehicles—**CASTROL**—  
*'when only the best will do'*

The largest range of V belts.  
A, B, C, D M Sections  
Bolts and nuts for all occasions  
Steel cut to size

**Scott McDonald**  
0423 413 829

**S.J.R AUTOMOTIVE**  
ABN 942 493 646 39  
13 ALSOP DRIVE, WINCHELSEA VIC 3241

**DAVIC AG**  
**CONTRACTING AND EARTHMOVING**

For all your harvesting needs  
Mowing, raking, round baling, paddock prepping, spreading and sowing

Call Dave on **0417 579 973** Bambra

**OZ TREES NURSERY & TREE PLANTING SERVICES**

- Affordable seedlings—over 200 species
- Complete plantation service—farm forestry, shelter, aesthetics
- Deep ripping & mound ploughing. Rotary bed forming
- Our experienced staff will help you select species for your site conditions and needs

Also available—tree planting tools, milk cartons, plastic tree guards & bamboo stakes

569 Warrowie Rd. Colac  
P: 5233 6280 F: 5233 6393  
E: info@oztrees.com.au  
W: www.oztrees.com.au  
Open Monday—Friday  
9am—4:30pm

Phone OzTrees for professional advice,

WINCH WEBSITES  
WEB SOLUTIONS SIMPLIFIED.

**WEBSITES**

GROW business  
INCREASE reach  
SAVE time

Find out what a website could do for you  
winchwebsites.com.au  
04 887766 20

**STS ACCOUNTING GROUP**

**Your Taxation & Superannuation Specialists.**

Winchelsea  
**5267 2673**  
www.surftax.com.au



# Providing shelter to help prevent heat stress in livestock



As an owner or manager of livestock it's crucial to protect your animals from harsh weather conditions.

Providing access to shelter can improve animal welfare by reducing the risk of heat stress and production losses as the animal doesn't have to actively use energy to lower its body temperature.

AgVic Animal Health Officer Flick Searle said behavioural signs of heat stress in livestock can include increased respiration rate, panting, increased salivation, listlessness, and lethargy.

'Heat stress can be treated by moving affected livestock into shade and providing clean, cool water. If after a period of time, after providing this treatment the animal doesn't improve contact a veterinarian immediately or humanely euthanise the animal,' Ms Searle said.

'In high temperatures, the accessible shelter needs to give protection from the sun, reducing solar radiation and also allow air movement. Good examples include trees with large canopies, shade cloth structures and sheds with open sides,' she said.

'Farmers need to keep in mind that some livestock have a higher need for shelter, such as very young, old or sick livestock as their ability to regulate their temperature is reduced. Therefore it's your responsibility to provide care accordingly.'

Ms Searle said when temperatures are high livestock can tend to crowd shelter areas so it's vital to have sufficient shelter for all livestock present. If the shelter is overcrowded, it can have the opposite effect and lead to livestock bunching up and transferring more heat to one another or even result in smothering.

'The most important things you can do for your animals in hot weather is to provide them with shade, water and rest during the hottest parts of the day.'

For more information, please visit our website [Caring for animals during extreme heat | Livestock health and welfare | Livestock and animals | Agriculture Victoria](#)

---

## Anthrax detected at second property in Shepparton

Anthrax has been detected at second beef cattle property in the Shepparton region, following an initial detection at a neighbouring property last week.

One cow has died, while the remaining livestock are being vaccinated.

A total of ten beef cattle have died across the two properties. Agriculture Victoria veterinarians and animal health staff are working closely with livestock owners in the region to assist with surveillance and vaccinations if necessary.

Victoria's Chief Veterinary Officer Dr Graeme Cooke said the second detection was not unexpected in northern Victoria, particularly during summer, assisted by the long survival of the anthrax bacteria in soil.

'Local farmers, veterinarians and Agriculture Victoria are well prepared to handle these incidents, with quarantine and

biosecurity arrangements in place and vaccinations underway for potentially exposed livestock,' Dr Cooke said.

Anthrax is not a concern for the public:

- Anthrax does not spread rapidly and is not contagious for humans
- There is no general public health risk associated with anthrax
- Any risk is confined to people who handle dead livestock such as farmers, veterinarians and knackery workers
- The Department of Health undertakes risk exposure assessments of individuals who have potentially been exposed and may offer treatment depending on the risk assessment.
- There is no impact on local produce or food safety.

Farmers are urged to report any cases of unexplained deaths to the 24-hour Emergency Animal Disease Hotline on 1800 675 888, to your local vet, or to Agriculture Victoria animal health staff on 136 186.

---

## Blink and you'll miss it – eye cancer in cattle

**Dr Jeff Cave, Agriculture Victoria Senior Veterinary Officer**

When checking your cattle, it is good practice to be on the lookout for eye cancers.

An eye cancer is a tumour of the eyelid or eyeball and is seen most in white-faced cattle such as Herefords and occur because of lifelong exposure to sunlight.

Eye cancers begin as a tiny growth and steadily increase in size. Eventually, the growth may invade surrounding tissues and spread to other parts of the body.

Therefore, eye cancers may cause losses to producers due to condemnation at the abattoir and loss of potential production of affected stock, plus the suffering of cattle if left unchecked.

The severity of eye cancers can be reduced through the early identification of growths and prompt action to treat or cull.

The incidence of eye cancers can be reduced by genetic selection by selecting for animals with pigmentation in the sclera "white" of the eye and the eyelid.

When an eye cancer is detected the course of action that should be followed depends largely upon the size and severity of the cancer.

Small eye cancers may be readily cured by prompt veterinary treatment.

Owners who fail to take reasonable action to prevent suffering in their animals may be considered for prosecution under the Livestock Disease Control Act or the Prevention of Cruelty to Animals Act.

For further information please contact your local veterinarian or Agriculture Victoria veterinary or animal health officer.



Winchelsea Shire Hall

## TRENCHES & HOLES PTY LTD.



**PHILLIP ROBERTSON**  
 ☎ **0427 672 945**  
**WINCHELSEA**

- **General Earth Works**
- **Driveways**
- **Trencher**
- **Kanga Loader**
- **Grader**
- **Excavator Work (3.5 & 6.5 Tonne)**
- **Tip Truck**
- **Rock Breaker**
- **Post Holes & Shed Footings**

A.B.N 74006896898

**WAZZA'S**  
**WATER CARTAGE**

*Stainless Tanker Up to 22,000 ltr loads  
 Barwon Water Registered*

**Domestic & Rural Water Supplies**

Call Wazza  
 Mob: 0428 877 260  
 Email: wazza@wazzas.com.au Web: wazzaswater.com

## M & L DRAYTON PLUMBING SERVICES

REG No 24356 C/A No C02594

- Domestic and Rural Plumbing
- Roofing
- Sewerage & Septic
- LPG & Natural Gas Connections
- Motorised Drain Cleaning
- Backhoe Hire

**Phone Mark 5288 7244**  
 PO BOX 98 WINCHELSEA 3241  
**Mobile 0428 520 142**



- DECKS - SAUNAS
  - FLOORING - PERGOLAS
  - WEATHERBOARDS
  - HORSE SHEDS
  - CLADDING - FENCES
- ALL THINGS TIMBER AND MORE...

INSTAGRAM guim\_designs

CALL PAT ON

**0401 232 674**

**YOU CAN'T CONTROL FIRE.  
BUT YOU CAN CONTROL  
WHEN YOU LEAVE.**

When the Fire Danger Rating is Extreme or Catastrophic, leaving early is your safest option. Download the Vic Emergency app or go to [emergency.vic.gov.au](https://emergency.vic.gov.au)



**HOW WELL DO YOU KNOW FIRE?**

Authorised by the Victorian Government, 1 Treasury Place, Melbourne



**Moriac Veterinary Clinic**

**0447 781 089**

PHONE 24 HOURS

784 Hendy Main Road Moriacle

[info@moriacvet.com](mailto:info@moriacvet.com)

[www.moriacvetclinic.com.au](http://www.moriacvetclinic.com.au)

HOURS // Monday - Friday: 8am - 5pm



**MGT BUILDING & CONSTRUCTION**

NEW HOMES | EXTENSIONS | RENOVATIONS

Ph: 0409 433 687



Chiropractic - Remedial Massage - Myotherapy - Sound Healing - Breathwork

**Chiropractic care for:**

Stress & Anxiety  
Body Aches & Tension  
Poor Sleep

Pain Management  
Family Wellbeing  
Health Longevity

03 5267 2240 Shop 4/21 Hesse St Winchelsea



<https://onebodychiropractic.com.au/>





# WINCHELSEA FACEBOOK

## Non-profit community Groups and Pages

What's on in Winchelsea	<a href="https://facebook.com/WhatsoninWinchelsea">facebook.com/WhatsoninWinchelsea</a>
Winchelsea FREE	<a href="https://facebook.com/groups/winchelseafree">facebook.com/groups/winchelseafree</a>
Winchelsea Community Information	<a href="https://facebook.com/groups/207538644446972">facebook.com/groups/207538644446972</a>
Winchelsea Classifieds 3241	<a href="https://facebook.com/groups/216942861684082">facebook.com/groups/216942861684082</a>
Winchelsea Lost and Found	<a href="https://facebook.com/groups/768187693217518">facebook.com/groups/768187693217518</a>
Winchelsea Op Shop	<a href="https://facebook.com/HospitalAuxiliaryOpShopWinchelsea">facebook.com/HospitalAuxiliaryOpShopWinchelsea</a>
Winchelsea Shire Hall	<a href="https://facebook.com/WinchelseaShireHall">facebook.com/WinchelseaShireHall</a>
Winchelsea Community House	<a href="https://facebook.com/winchelseacommunityhouse">facebook.com/winchelseacommunityhouse</a>
Winchelsea Coronavirus Community Support Group	<a href="https://facebook.com/groups/2676957719207927/">facebook.com/groups/2676957719207927/</a>
The Green Winchelsea Residents	<a href="https://facebook.com/groups/515322772623126">facebook.com/groups/515322772623126</a>
Growing Winchelsea Inc	<a href="https://facebook.com/growingwinch">facebook.com/growingwinch</a>
Winchelsea Star	<a href="https://facebook.com/TheWinchelseaStar">facebook.com/TheWinchelseaStar</a>
Winchelsea Movie Club	<a href="https://facebook.com/winchelseamovies">facebook.com/winchelseamovies</a>
Winchelsea Community Market	<a href="https://facebook.com/100083362387611">facebook.com/100083362387611</a>
Winchelsea Land and River Care Group	<a href="https://facebook.com/envirowinchelsea/">facebook.com/envirowinchelsea/</a>
Upper Barwon Landcare Network	<a href="https://facebook.com/UpperBarwonLandcare">facebook.com/UpperBarwonLandcare</a>
Winchelsea & District Historical Society Inc	<a href="https://facebook.com/Winchelseaanddistricthistoricalsociety/">facebook.com/Winchelseaanddistricthistoricalsociety/</a>
Winchelsea Wildlife Shelter	<a href="https://www.winchelseawildlifeshelter.com/">www.winchelseawildlifeshelter.com/</a>
SCARS - Surf Coast Animal Rescue Service	<a href="https://facebook.com/groups/415211698950674">facebook.com/groups/415211698950674</a>
Winchelsea Gardeners	<a href="https://facebook.com/groups/779878518703025">facebook.com/groups/779878518703025</a>
Winchelsea & District Historical Society	<a href="https://facebook.com/Winchelseaanddistricthistoricalsociety/">facebook.com/Winchelseaanddistricthistoricalsociety/</a>
Winchelsea Repertory Society Inc	<a href="https://facebook.com/winchrep/">facebook.com/winchrep/</a>
Winchelsea Globe Theatre	<a href="https://facebook.com/Winchelsea-Globe-Theatre-164790897641678">facebook.com/Winchelsea-Globe Theatre-164790897641678</a>
Winchelsea Uniting Church	<a href="https://facebook.com/winchelseaunitingchurch">facebook.com/winchelseaunitingchurch</a>
St Thomas' Anglican Church	<a href="https://facebook.com/StThomasWinchelsea">facebook.com/StThomasWinchelsea</a>
St John the Baptist Catholic Church	<a href="https://facebook.com/pages/Winchelsea-Catholic-Church/101775670163180">facebook.com/pages/Winchelsea-Catholic-Church/101775670163180</a>
Winchelsea Mainly Music	<a href="https://facebook.com/groups/668500343953191/">facebook.com/groups/668500343953191/</a>
Winchelsea Health Club	<a href="https://facebook.com/WinchelseaHealthClub">facebook.com/WinchelseaHealthClub</a>
Winchelsea Playgroup	<a href="https://facebook.com/groups/551663435367031">facebook.com/groups/551663435367031</a>
School terms only. Contact Danni 0432 019 944	
Winchelsea Girl Guides	<a href="https://www.guidesvic.org.au/">www.guidesvic.org.au/</a>
Winchelsea/Modewarre Scouts	<a href="https://facebook.com/1stModewarreScouts">facebook.com/1stModewarreScouts</a>
Winchelsea Fire Brigade	<a href="https://facebook.com/winchelseafirebrigade/">facebook.com/winchelseafirebrigade/</a>
Winchelsea SES	<a href="https://facebook.com/groups/WinchSES">facebook.com/groups/WinchSES</a>
Country Women's Association - CWA Winchelsea	<a href="https://facebook.com/pg/CWAWinchelsea/">facebook.com/pg/CWAWinchelsea/</a>
Winchelsea Bowls Club	<a href="https://facebook.com/Winchelsea-Bowls-Club-533783333344345/">facebook.com/Winchelsea-Bowls-Club-533783333344345/</a>
Winchelsea Blues Cricket Club	<a href="https://facebook.com/groups/8999049476/">facebook.com/groups/8999049476/</a>
Winchelsea Blues FC	<a href="https://facebook.com/WinchelseaFNC/">facebook.com/WinchelseaFNC/</a>
WYLD Winchelsea Youth Leisure and Drop in	<a href="https://facebook.com/groups/569737570027065/">facebook.com/groups/569737570027065/</a>
Lions Club of Winchelsea	<a href="https://facebook.com/LionsWinchelsea">facebook.com/LionsWinchelsea</a>
Winchelsea Probus	<a href="https://facebook.com/893535194971083">facebook.com/893535194971083</a>
Winchelsea Golf Club	<a href="https://facebook.com/winchelseagc/">facebook.com/winchelseagc/</a> <a href="https://facebook.com/groups/1324943804676697">facebook.com/groups/1324943804676697</a>



# JUNIOR FOOTBALL SEASON 2024



**FREE SEASON MEMBERSHIP!**

**U/9s u/10s u/12s**  
Boys and Girls come and try 5pm  
Thursday 7th March @ Eastern Reserve.  
BBQ provided at 6pm.

Enquiries:  
Daniel: 0421377492  
Janet: 0400783408  
Byron: 0401170854

# DEVELOP

## CLOSING SOON

**DEVELOP Applications Close: 5pm Thursday 29 February**

**Surf Coast Shire Council is committed to fostering an environment where people with clever and creative ideas can make a difference.**

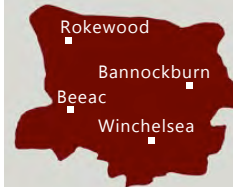
**DEVELOP** supports creatives to explore new directions, ideas and concepts to advance their practice and/or their careers. It provides individual creative practitioners up to **\$3000** and creative collectives up to **\$5000** to undertake:

- Intensive creative research and development of new ideas/concepts
- Practice-based experimentation

**FURTHER INFORMATION ABOUT DEVELOP:**  
[surfcoast.vic.gov.au/ArtistCreativeGrants](http://surfcoast.vic.gov.au/ArtistCreativeGrants)



## HESSE RURAL HEALTH



Acute Care\*  
Urgent Care\*  
Residential Aged Care\*  
Community Nursing  
Dietetics  
Physiotherapy  
Occupational Therapy

Diabetes Education  
Social Support Groups  
Counselling  
Home Care  
Health Promotion  
\* services from Winchelsea only

[www.hesseruralhealth.com.au](http://www.hesseruralhealth.com.au)  
P: (03) 5267 1200 E: [reception@hesse.vic.gov.au](mailto:reception@hesse.vic.gov.au)

## Funeral Planning

*Working out what is best for you.*

Prepaid Funerals, Funeral Bonds, Pay-by instalments...

There are many options and its important to make the right choice.

Alyson Burchell will be available by appointment to answer any questions about funerals and planning ahead.



For more information or to make an appointment contact Sue on 5221 4788

Tuckers Community Office,  
Surf Coast Taxation Services, 22 Willis Street,  
Winchelsea

**First Tuesday of the Month,  
by appointment 10.00am - 12.00pm**

*Caring for families since 1883*

**Tuckers**  
Funeral & Bereavement Service  
...for a life worth celebrating

5221 4788  
[www.tuckers.com.au](http://www.tuckers.com.au)



**Wadawurrung**  
**Traditional Owners**  
Aboriginal Corporation



**IF YOU'VE HAD YOUR**  
 **OR**  **STOLEN, BUT**  
**DON'T HAVE THE**  **TO VISIT**  
**YOUR LOCAL**  **STATION...**



 report online

**ANYTIME**

**WHEN YOU NEED US,  
BUT NOT THE SIRENS**



**LEARN MORE**



# R.A.K. DAVIS & SONS

## CARTAGE CONTRACTORS

WINCHELSEA

SUPPLIER OF ALL QUARRY MATERIALS, TRUCK HIRE

CARTAGE OF GRAIN, LIME, GYPSUM & SUPER

LANDSCAPE & GARDEN SUPPLIES

56 WILLIS ST, WINCHELSEA

Ph – 5267 2094

Ryan – 0438 672 281

Email: rakdavis@bigpond.com



- ✘ LOG BOOK SERVICE
- ✘ AUTO ELECTRICAL
- ✘ TOWING
- ✘ AIR CONDITIONING
- ✘ CLUTCH & BRAKES
- ✘ TYRES
- ✘ WHEEL ALIGNMENT
- ✘ BATTERIES

### CAR, TRUCK REPAIRS & Roadworthys

PH: 5267 3001

Mob: 0417 137 457

17 Alsop Drive

**GREAT Bundle Deal on Bosch Hot Water...** FROM ELGAS  
 Buy any Bosch Bluetooth continuous flow hot water model - 16Litre, 20Litre or 26Litre and Receive \$100\* in Elgas bonus LPG gas credits



\*For more details: www.elgas.com.au/appliances/bosch-aptiflow-16-20-26-lpg-bundle-sale

AND... for new customers, an additional \$80 WORTH OF LPG GAS CREDITS\*\* when you open a new LPG Gas account with Elgas



\*\*Further details can be viewed at www.elgas.com.au

Ask about the Elgas Easy Payment Plan - 12 months interest free\*\*\* on selected LPG appliances

\*\*\*Further details can be viewed at: www.elgas.com.au/ep

Automatic tanker gas bottle refill OR gas bottle exchange refill is available for home or business...

Call today or visit our website for our many customer benefits and latest offers

131 161  
www.elgas.com.au

ELGAS



### SIMPLE STORAGE SOLUTIONS

- Personal & Business Storage
- Boat, Caravan & Vehicle Storage
- High Security Premises
- Individually Alarmed Units
- Electric Gate Access
- 7 Day Access & CCTV

### YOUR STORAGE PROBLEMS SOLVED

5267 3116

6 ALSOP DRIVE, WINCHELSEA 3241

## HESSE RURAL HEALTH



### Volunteers Required

Volunteers are one of Hesse's greatest assets, playing a vital role to enhance the quality of Hesse services & client experiences.

- Bus Driver
- Outings Assistant
- Resident Visitor
- Events & Activities Assistant
- Group Wheelchair Walkers
- Appointment Escort
- Social Support Activities
- Gardening - Winchelsea
- Hospital Auxiliary Member
- Consumer Advisory Committee
- Marketing & Fundraising Committee

For more information please contact Hesse on (03) 5267 1200 or via email reception@hesse.vic.gov.au

### Wightons Lawyers

- Dispute Resolution & Litigation
- Debt Collection
- Property Law
- Wills & Estates
- Powers of Attorney
- Business Law
- Family Law

By appointment only

22 Willis Street, Winchelsea  
ph. 5221 8777

www.wightons.com.au





rma network Accredited Member

Charles Stewart & Company are leading livestock and real estate service providers covering Victoria's south west

**LIVESTOCK**  
 Jamie McConachy | 0418 522879  
 Peter McConachy | 0408 522878  
 Matt Nelson | 0428 315400  
 Gerard Bohan | 0400 005541  
 Lachie Barclay | 0438 346291  
 John Thornton | 0408 526367  
 Dougal McIntyre | 0439 575612  
 Ross Spitty | 0419 539717

**REAL ESTATE**  
 Michael Stewart | 0418 520467  
 Daryl Osborne | 0419 388341  
 Anthony McDonald | 0418 593597  
 Gerard Bohan | 0400 005541  
 Stephen Lugg | 0417 556098  
 Josh Lamanna | 0417 586032



Office  
 56 Bromfield Street, Colac  
 www.charlesstewart.com.au

Green Lead Electrical  
 Connecting you to a greener future  
 REC 23618

0467 097 101



## Servicing Geelong & the Surf Coast

Specialising in all residential electrical work including:

- Switch board & lighting upgrades
- Outdoor lighting
- Electrical safety checks
- Energy efficient LED lighting
- Ceiling sweep fans & ventilation
- Energy saving advice

Phone Martin Wilkinson:

**0467 097 101**

[greenlead@outlook.com](mailto:greenlead@outlook.com)

1132268-CG18-14



Water Supply Specialists

WATER SOLUTIONS

74 Dennis Street, Colac  
 5231 1861



ALL THINGS WATER:

- PUMPS - PIPES
- FITTINGS - TANKS
- POOL CHEMICALS
- IRRIGATION
- WATER PURIFICATION
- SOLAR - REPAIR

## WINCHELSEA LIONS CLUB

### PAPER RECYCLING

Paper depot rear of Senior Citizens Rooms  
 Harding Street  
 NEWSPAPERS,  
 MAGAZINES,  
 PHONE BOOKS WANTED



RAISING FUNDS FOR  
 OUR TOWN & DISTRICT  
 5267 2011 or 0408 520 606

## M&B WOOD PLUMBING

Call Matt - 0418 319 357  
[mbwoodplumbing.au](http://mbwoodplumbing.au)

### Servicing Winchelsea & surrounds

- General maintenance & blocked drains
- Gas fitting & hot water service upgrades
- New homes & renovations

### CUT PRICE LAWNMOWING



GARDEN CARE  
 RUBBISH REMOVAL  
 RETAINING WALLS

All types of Brickwork, outdoor fireplaces and paving.

CALL BRIAN FOR A FREE QUOTE

0458 568 743

[briandlee60@gmail.com](mailto:briandlee60@gmail.com)



- Fabulous
- Pizzas
  - Pastas
  - Souvlakis
  - Burgers
  - Desserts

Thurs & Sun  
 3-8pm  
 Fri & Sat  
 3-9pm

21 Main St  
 Winchelsea  
 5292 2120

[f](https://www.facebook.com/Sandyz) Sandy'z







**Located at 36 Main Street, Winchelsea 3241**

For any enquires or bookings please contact the clinic on 5292 8028.  
Or visit our website: [www.winchmc.com.au](http://www.winchmc.com.au)

Opening Hours:

Monday - Friday 8:00am - 5.00pm  
(Monday Evening Clinics available and selected Saturdays)



Our clinic accepts online bookings via the app called HotDoc.  
Download the app on the App Store or Google Play or head to our website.

# NATURAL GAS CONNECTIONS

**M. & L DRAYTON  
PLUMBING SERVICES**

**YOUR LOCAL LICENSED**

- PLUMBERS (24356)
- GAS FITTERS
- GAS CONVERTERS
- CARBON MONOXIDE TESTING

**MARK 0428 520 142**

Commercial | Industrial | Domestic

# HAMILTONS

**Truck & Bobcat Hire**  
**Give Aaron a Call**  
**0438 438 623**



Winchelsea and District

## Ebony knows banking

If you need help with yours, you need to meet Ebony.

Ebony shares her knowledge of banking so you can achieve what you want from life.

And, she can meet you when and where it suits you; at the branch, over the phone, or via video call.

**If you need help with your banking, call Ebony Berg, Loan Specialist on 5267 3189 or search Bendigo Bank Winchelsea.**

[bendigobank.com.au](http://bendigobank.com.au)



Bendigo and Adelaide Bank Limited ABN 11 068 049 178, AFSL/Australian Credit Licence 237879. A1415950 OUT\_33710515

### Winchelsea Men's Shed



**For The Community**

**51 Hesse Street**

**Every Wednesday from 9:30am**

**New members always welcome**

**For more detail contact:**

**Ray Atkinson (Co-ordinator)**

**0407 839 139**

**or**

**[winchmensed@gmail.com](mailto:winchmensed@gmail.com)**

**Need a job done?**

**Woodworking jobs,**

**furniture repairs, small jobs.**

**Drop in and talk to us.**



**Pixie Wash**  
Mobile Doggie Care  
Dogs up to 20kg  
**Pixie Heath**  
**0417 586 080**



## Community buses for hire

If your community group would like to organise transport to your next activity or event, why not enquire about one of our community buses available for hire?



The service caters for Surf Coast Shire residents, community groups and not-for-profit organisations ranging from sports clubs, church groups, seniors groups and community based health services.

Four community buses come equipped with auto transmission and can transport 12 passengers, including the driver. The Bendigo Bank Community Bus at Winchelsea can transport up to 28 people, including the driver.

Buses will be supplied in a clean, roadworthy condition with a full tank of fuel and are required to be returned the same way.

For information on how to hire buses including fees and charges, please visit our website

[surfcoast.vic.gov.au/communitybus](http://surfcoast.vic.gov.au/communitybus)

Barwon River  
Winchelsea



## Winchelsea Taxis is now Surfcoast Taxis

Our fleet of vehicles are growing to all late models and we are covering an extended area including Winchelsea, Colac, Bannockburn, Inverleigh, Great Ocean Road and Geelong.

We have a fleet of 10 seater Maxi Vans, all with capacity to carry wheelchairs.

**Surfcoast Taxis Pty Ltd**  
**All Bookings: 0408 325 992**  
**Fax: 5267 2699**  
**Email: [bannotaxis@gmail.com](mailto:bannotaxis@gmail.com)**  
(Admin or Stan 0429 672 888)  
66A Batson Street  
Winchelsea 3241



Accounts NDIS provider. TAC, DVA etc

NDIS provider number 4050001044

NDIS provider number 4050001048

- Domestic and Commercial hire equipment
- Industrial welding gas
- Digging and Earthmoving equipment
- New trailers and trailer repairs
- Firewood
- Stockists of Royal Oil Lubricants products
- LPG for domestic and commercial requirements

Give Chris and the Team a call on **5232 1177** or email [info@colachire.com.au](mailto:info@colachire.com.au)

[www.colachire.com.au](http://www.colachire.com.au)

101 Wallace St Colac 3250





# Drug driving? The consequences will blow your mind.

Police are conducting drug tests across Victoria, which helps to keep our roads safe. Being caught with illicit drugs in your system could result in a minimum fine of \$577 and possible licence suspension. Drug driving? Chances are you will be caught. Anywhere. Anytime. Anyone.



# Lupton BUILDERS

SPECIALISING IN QUALITY



REGISTERED Building Practitioner

- NEW HOMES
- ALTERATIONS
- CARPORTS
- BATHROOMS
- EXTENSIONS
- DECKS
- VERANDAHS
- WINDOW REPLACEMENTS
- RENOVATIONS
- PERGOLAS
- RE-GLADS

LEIGH LUPTON  
0438 840 104

CHRIS LUPTON  
0407 681 514

LEIGHLUPTON17@GMAIL.COM

Est. 1977

# Winchelsea Star

Since 1977



ISSN 2202-6851



## HF RICHARDSON

PROPERTY

Servicing all your real estate needs  
Ken McDonald **0418 524 150**



Residential | Rural Lifestyle | Agricultural Farms

### PUBLIC ACCESS DEFIBRILLATORS IN WINCHELSEA

The Winchelsea Lions Club has compiled a list of public access defibrillators in Winchelsea.

We are lucky to have more available in town, but these are specifically **publicly accessible 24 hours a day**.

If anyone knows any others that have 24 hour public access, please let Linda Carter know on 0439 817 263.



Bendigo Bank  
11 Main Street



Ambulance Victoria  
33 Willis Street



Uniting Church  
33 Hesse Street



Probus Club  
(Senior Citizens)  
36 Harding Street



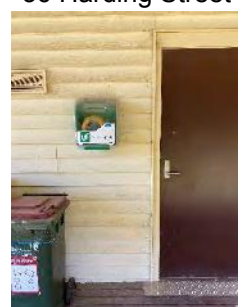
Men's Shed  
51 Hesse Street



Winchelsea Golf Club  
13 Anderson Street



Hesse Rural Health  
8 Gosney Street



Wurdale Memorial Hall  
220 Wurdale Road

