

MAY 2025

imag

informative | interesting | interactive

AFFORDABLE FOOD AT CLUB

Ivybridge Food Club offers
big savings on shopping

DO YOU HAVE A STORY TO TELL?

Special event for South
Hams Literary Festival

GO ON A DEEP SEA ADVENTURE

Topic of summer reading
challenge is revealed



**Buying a home?
Selling a home?
Fixed fee conveyancing?
No Move No Fee?**

GARD & CO



Solicitors

01752 648174

gardandco.com

P13



P20



FOOD CLUB SHOWS SENSE OF COMMUNITY

Welcome to the latest issue of the imag.

With the tumultuous going-ons on the world stage, it can seem that the ongoing hardship of people closer to home still struggling with the ever-rising cost of living has been forgotten.

But not in this area. A community club in Ivybridge offers local people the chance to save substantially on their food shop (see page 13), while community fridges in Ivybridge and South Brent, open to all, offer food for free that would otherwise unforgivably be thrown away.

These fantastic initiatives are run by community-minded volunteers. They are always grateful for more people to get involved, so if you'd like to help, get in touch with them.

Also inside, as we enter the summer months there is lots going on – see pages 5 and 6 for events coming up.

And there are the usual features to enjoy, too.

I hope you find this month's features and articles informative and interesting.

Steven – editor



P6



P6

FEATURES

- New church hall in Ivybridge p9
- Do you have a story to tell? p10
- Affordable food at community club p13
- Timeless elegance of rare jewels p15

WHAT'S ON

- The Bowie Experience p5
- Vintage cars on display p6
- War archaeology walk p5
- Try underwater sketching p6

MORE

- Children can go on a deep sea adventure this summer p18
- Grant boost for the 'Library of Things' p20
- Market showcases 'home makers' p20
- Conveyancing FAQ p26

CONTACT THE IMAG

Do you have an article or story, or details of an event, you'd like to share in the imag?

It may be a charity fundraising quest, a report about your club or a personal achievement – whatever, we'd like to hear about it!

Please email us at info@theimag.co.uk The deadline for the June issue is 28th May

ADVERTISE IN THE IMAG

Advertise alongside informative, interesting local content – not just page after page of other adverts.

We deliver 8,500 copies each month to homes in Ivybridge and 12 surrounding towns and villages including South Brent, Yealmpton, Ugborough, Ermington and Cornwood.

DID YOU RECEIVE THE IMAG?

Do you think you should be receiving the imag but do not get it delivered at the moment?

Dogs and notices (of varying politeness) stating that free things aren't wanted aside, we aim to deliver to as many properties as possible in the area we cover. If you're not receiving a copy, please do let us know.

The imag is an independent magazine published and produced by Lily design, 6 Claymans Pathway, Woodlands, Ivybridge PL21 9UZ. © Lily design 2025. The imag has no affiliation to, nor official relationship with, any authorities or organisations. No part of this publication may be reproduced, in any form, without the prior express consent of the publisher. All information, advertised or provided, is accepted in good faith as being correct at the time of going to press. Opinions expressed in the magazine are not necessarily those of the publisher and editor. The publisher accepts no responsibility for products, goods or services that may be advertised or referred to.

Contact us: Call/text/WhatsApp on **07516 539573** Email: info@theimag.co.uk

3

When responding to an advert or article, please mention that you saw it in the imag

Helen Moore

Your Independent
Estate Agent

Specialising in the sale of
residential & new homes
in the South Hams &
Plymouth



Call 01752 962162

www.helenmoore.exp.uk.com

HELEN MOORE
PROPERTY



WESTERN
Carpets & Pine Ltd

www.westerncarpets.co.uk



Create the perfect space

Your Flooring and Furniture Specialists Since 1995

Visit our *new* showroom

Unit 6, Richmond Place, Central Avenue, Lee Mill Industrial Estate, Ivybridge PL21 9RL

Tel: 01752 896776 • Email: sales@westerncarpets.co.uk

Open 9am-5pm Monday to Friday, Saturdays by appointment only.



The Bowie Experience

The Watermark – Saturday, 7th June

Fans of the 'Thin White Duke' should head to The Watermark on Saturday, 7th June, when The Bowie Experience bring their sensational show to town.

Undoubtedly the World Number 1 David Bowie tribute act, they have been touring the globe since 1997, to huge critical acclaim.

Expect all the hits from A to Ziggy with superb renditions from the incredible back catalogue, frequent costume changes and dynamic performances of classics such as Life

On Mars, Changes, Let's Dance, Rebel Rebel, Golden Years, Heroes, Space Oddity, Starman, Young Americans and so much more.

Main man Laurence Knight perfectly captures the look, sound and essence of the legendary performer, and band members have played with luminaries including Steve Harley, Roy Wood, and the Boomtown Rats.

Go to The Watermark box office to buy tickets (see the back page for contact details).

War archaeology walk

Saturday, 24th May
Harford

A guided walk round 'war archaeology' on Harford Moor is the second event of this year's Harford Special Spaces series.

The walk will link in with graves of war dead in the Harford churchyard, including Captain Michael Farr, Prisoner of War at Colditz.

10am-1pm. Starting from St. Petroc's church. Please wear sturdy shoes. Dogs are welcome on a lead.

Quiz night

Thursday, 29th May
Dame Hannahs

Challenge your knowledge while having fun at the next Dame Hannahs' quiz night.

Teams are up to six people, so either create your

own team or join others on the night. Tickets are £10 per person and include quiche, salad and new potatoes. Starts 7pm.

Booking is essential. Register your team today and include any dietary requirements by contacting the Dame Hannahs' fundraising team on 01752 898135 or email SupportUs@discoverhannahs.org.

Concert

Saturday, 17th May
Ugborough

The Girls' Night Out choir and Modbury Gospel Singers are joining together for a concert at St Peter's Church, Ugborough (7pm).

Tickets £10. Evening will include refreshments and a raffle. In aid of Christian Aid.

COMMUNITY DIARY - P30-31



**SPRING OPENINGS:
until 8th JUN**

Suns, Weds
& Bank Hols –
11am-5pm

 Lukesland Gardens

www.lukesland.co.uk

*24 acres of tranquil woodland garden
Spring colour by a Dartmoor stream*

Tea room serving homemade soup and cakes
£9 adults / u16 free • Dogs welcome on a lead

Harford, Ivybridge PL21 0JF | 01752 691749 | Find us on Facebook

Evening lecture: Modbury's Civil War

Thursday, 5th June
Devon Rural Archive
The first Battle of Modbury in December 1642, and the second battle in February 1643 are the subject of this lecture.

Philip Photiou will explain how events leading to the two battles led to the defeat of the Royalist army, and the impact this had on the civil war in Plymouth and the South-West. Philip, a local, published historian, has walked all over Devon and Cornwall during his research and has redefined the forts and battle sites in and around Plymouth.

7pm. Tickets from devonruralarchive.com.

Try underwater sketching

Sunday, 1st June
Lukesland

Artist Louise Scammell is doing another 'meet the artist' session at Lukesland, where people will have the opportunity to try underwater sketching!

Louise will demonstrate how she draws underwater using a waterproof sketch pad and attendees will get the chance to have a go.

Louise's work, which describes her coastal and underwater encounters, is also on display at Lukesland.

Louise teaches printmaking at Art House in South Brent, where she also has her own studio – meet her on the afternoon of Sunday, 1st June.



Bingo

Friday, 6th June
Dame Hannahs

Eyes down for an evening of prize bingo at the next Dame Hannahs' bingo night.

The monthly event is proving very popular with the local community. There are plenty of refreshments and cake and a half-time raffle.

Doors open 7pm with a prompt start at 7:30pm.

Contact the Dame Hannahs' fundraising team on 01752 898135 or email SupportUs@discoverhannahs.org to book.

Jigsaw Competition

Thursday, 26th June
Ivybridge Library

The Friends of Ivybridge Library (FOIL) is holding another jigsaw making competition (start time 7pm).

Teams of up to four will each attempt to complete an identical puzzle in the quickest time. Entry will be £5 per person to include coffee and cake. All proceeds go towards FOIL's work in supporting the library.

Tickets will be on sale in the library soon.



Vintage car display

Sunday, 8th June – Lukesland

Members of the Devon Vintage Car Club will be displaying their beautiful vehicles in front of Lukesland House, for all to admire and enjoy.





HOWARD & OVER: A THRIVING LAW FIRM ON THE RISE WITH FOUR NEW PROMOTIONS

Howard & Over, a successful South West law firm, is making waves with their impressive growth, strategic expansion, and a series of key promotions that solidify their position as a leader in the legal sector. With an ever-growing client base and increasing demand for their services, the firm is embracing change and investing in the future.

At the heart of this progress is the firm's commitment to nurturing talent and recognising excellence. Four outstanding professionals have recently been promoted, reinforcing Howard & Over's reputation for fostering career growth and maintaining the highest standards in legal expertise:

- Sam Ellis, formerly the Office Manager and Head of Accounts, has been promoted to Partner while continuing her roles as Office Manager and Head of Accounts. This well-deserved recognition highlights her exceptional leadership and pivotal contributions to the firm's success.
- Natalie Couling, previously an Associate Licensed Conveyancer, has advanced to Partner and Licensed Conveyancer, reflecting her dedication and expertise in property law.

- Claire Waldren has been promoted from Associate Solicitor to Partner and Solicitor, a move that highlights her exceptional legal acumen and client-focused approach.

- Jacob Cunningham, a Chartered Legal Executive, steps into the role of Associate and Head of Commercial, where his strategic insight will drive the firm's business law services forward.

A testament to their success, already this year, Howard & Over has also expanded their Ivybridge office and established a brand-new presence in Newton Abbot. These developments mark a significant step forward, enabling the firm to provide even greater accessibility and top-tier legal support to clients across the region.

Their continued success is built on a foundation of innovation, professional development, and an unwavering commitment to excellence. With a growing presence and a dynamic leadership team, the firm is set to shape the future of legal services in the South West.

9 Glanvilles Mill • Ivybridge • PL21 9PS

e: ivybridge@howard-over.co.uk t: 01752 690123



HOWARD & OVER
SOLICITORS EST. 1914

www.howard-over.co.uk



gth

HAVE YOU SEEN THE SIGNS?

If you are keen to know the value of your own home, contact your local property experts today for a free market appraisal.

Scan here to
book a free
market
appraisal



01752 393737

residential.ivybridge@gth.net

GREENSLADE TAYLOR HUNT

www.gth.net

We know that a financial adviser is key
for those life changing moments, those
milestones when your priorities
change and you need to
rethink.



01752 837 950



www.manningandco.co.uk



MANNING & COMPANY

Independent Financial Advisers

Authorised and regulated by the Financial Conduct Authority

NEW CHURCH HALL FOR IVYBRIDGE

By Andrew Jewell

On 11th July, 1905, the foundation stone for a new Church Mission Hall in Ivybridge was laid. It was located almost immediately opposite St Johns Church. The cost of the hall was met by John Bayly, who lived nearby at Highlands.

The room would accommodate 120 people, and the building would be of simple character with a kitchen and office. The interior would be lined with pitch pine and have an open ceiling. The building was to be constructed in Redhill stone with granite coigns, dressed with Bath stone.

The plans of the building were the work of Mr Pearce, the estate surveyor for Mr Bayly. The builders would be Messrs Gilbert Sincock and Henry Blight. They were local builders and had previously constructed the north aisle of the church and its boundary wall in 1887. They had also extended the school and built its boundary wall to enclose Victoria Park.

In front of a large gathering which included Miss Deare of Blachford, the lady of the manor, the foundation stone was laid by Miss Cecilia Bayly, the three-year-old daughter of John Bayly. She was presented with a special silver trowel from the builders bearing the inscription 'Presented to Miss Cecilia Joan Bayly on the occasion of the laying of the foundation stone

of Ivybridge Mission Room, 11th July 1905'. Cut in the foundation stone were the initials 'C. J. B., 1905'.

The vicar, the Rev George Anstiss, in his address hoped that the building would not be just for religious purposes but be of social benefit for the young people and provide them with the means of innocent entertainment and recreation.

This new mission room would replace what was termed as the old mission-house, which was located at the bottom of the village. Despite research, the precise whereabouts of this room is not certain. It was known that a large room at the Rogers' Arms was used for parochial festivities at this time but little else.

Wherever this mission-house was, it was described as inconvenient and too small for the religious and secular work conducted within the parish. Furthermore, it was ill-ventilated, yet despite this criticism, it was apparently affectionately remembered. It had certainly been well used for a variety of activities.

A quarter of a century before, it had been serving as a night school and continued as such until the School Board instituted evening classes and technical education. This targeted tuition included chemistry, physics and mechanics as applied to ordinary life but in the case of Ivybridge it had a special reference to its chief industries, paper making and

agriculture.

Later, the room was devoted to meetings of the Girls' Friendly Society (GFS), the Women's Bible Reading Society, The British Women's Temperance Society and the Mothers' Union.

The GFS was established in 1875 and aimed to provide friendship and support for the growing number of working-class girls from rural areas who were leaving home to seek employment in the larger towns and cities. The idea at the heart of the organisation was that these young girls would be befriended and guided by higher-class lady associates. All members were required to be members of the Church and of 'unblemished character'.

The Mothers' Union was an Anglican organisation established just a year later in 1876. It was created to support mothers of all kinds in bringing up their children. Over time, groups were established around the nation forging strong links with local people and the Anglican Church. As well as child welfare, it encouraged the habit of thinking of those religious convictions on which life was based.

Following the foundation stone ceremony, the children of the parish were entertained at Highlands with a tea and various sports, whilst the Ivybridge Brass Band paraded the streets.

Judging by the mission hall's balance sheet it was well supported in the ensuing year with

various receipts via donations, subscriptions, and hall rental. Unfortunately, in the period 1914-15 it suffered a loss of £7 1s. 9d. due to the failure of the local Naval Bank.

The Naval Bank was started in 1773 and opened a branch in Ivybridge around 1784 which was located on Station Road. The financial pressures brought about by the war caused the bank to declare bankruptcy, and several people lost their life savings as a result.

The mission hall continued to be a focal point for many youth organisations such as the Church Lad's Brigade which had formed around 1900 and later the boy scouts, before they moved to the old drill hall.

In the 1990s the hall was sold for private use, and a new modern hall was built alongside the church.



www.ivybridge-heritage.org



for lots more
local history

DO YOU HAVE A STORY TO TELL?

A day for local writers is being held on Saturday, 14th June, by South Hams Literary Festival.

Featuring local publishers, creative writing groups, writers' collectives, proof readers, the South Hams Authors Network and more, the day will be an excellent opportunity for anyone interested in writing, whether you're just starting out or have been at it for years.

Whatever level of writing you're at, there will be something of interest to you. There's no need to book.

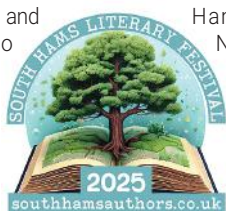
Organiser Alison Huntingford said: "I wanted to make this accessible for everyone who is interested in writing, at any level. There is so much

talent out there and we want to encourage it.

"Children and families are also welcome, so there's no reason not to come along and say hello."

The day starts with a session from 10.30am until 12.30pm. Drop in, be inspired and discover your next step as a writer. Talk to professionals, authors and colleagues and connect with a supportive community.

Stalls include Stoot Books (Plymouth-based independent publisher), Winter & Drew Publishing, (Devon-based hybrid publisher) South



Hams Authors Network, Sorrel Dryden (proof reader, copy writer, editor), two creative writing groups – 'A Letter Is

Better' and 'Writing At The Edge Collective' – Rogue Debby CIC (peer support for chronic illness), as well as local authors and more.

After a break for lunch, at 2pm (until 3.30pm) there will be a meeting of South Hams Authors. All are welcome. There will be guest speakers and lots of information about events for writers, as well as the chance to

catch up on all the news.

"This is a true community event," said Alison. "I couldn't have done it without the kind sponsorship of Rogue Debby CIC, Feelgood at Unit 8 Gym, plus I am grateful to have had help from The Ivybridge Bookshop."

The day is being held at Unit 8 Gym near Endsleigh from 10.30am-3.30pm. Entry is free. There is free parking and refreshments will be available.

For more details, scan the QR code, go to www.southhamsauthors.co.uk/festival-2025 or email southhamsauthors@gmail.com

The day is part of 'Indie Author Week'.



South Brent Old School Community Centre Needs Your Help!



Help us stay warm, dry and welcoming for generations to come

We need to raise £500,000 by 31st May

to replace the roof and complete a programme of upgrades & rejuvenation



Donate here:
www.justgiving.com/page/rejuvenating-the-centre

Thank you!

Buy a slate in memory of a loved one: £1.50 per slate

www.theoldschool.org.uk
info@theoldschool.org.uk
07707 723637



IVYBRIDGE BREWING CO

Come and Visit Ivybridge's Own Brewery and Taproom

LOCATED ON THE BANKS OF THE RIVER ERME

We are a social enterprise that changes the lives of people with learning disabilities and autism.

See where we brew our award-winning beers and meet our wonderful team.

VISIT OUR NEW TAPROOM.

TASTE OUR BEERS.

BUY BEER FROM OUR SHOP.

COME TO OUR FOOD EVENTS.

WE LOOK FORWARD TO WELCOMING YOU!

GREAT BEER CHANGING LIVES

Find us at: 3, Glanvilles Mill Ivybridge, PL21 9PS



For all your glass and glazing requirements

We are now recognised Installers of the Sure Flap Cat Flap.

We also supply and fit Staywell Cat Flaps & Pet Flaps.

cat flaps...

A pet door is found to be convenient by many owners of companion animals, especially cats, because it lets them come and go as they please, reducing the need for pet-owners to let or take the pet outside manually, and curtailing unwanted behaviour such as loud vocalisation to be let outside, scratching on doors or walls, and excreting in the house. They also help ensure that a pet left outdoors can safely get back in the house in the case of inclement weather.

Stop unwanted animals entering your home and give your pet their own door key.



Free Estimates call

01752 769832 or 07846 475217

**Sahara
New
Season**

Sale
continues



21 Fore Street
Ivybridge
PL21 9AB

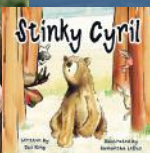
**Diana
BOUTIQUE**

Tues-Fri
10am-3pm
Sat: 10am-1pm

info@dianaboutique.co.uk 01752 894562 www.dianaboutique.co.uk

THE IVYBRIDGE BOOKSHOP

Upcoming Events - Meet the Authors!



Storytelling with Jax King
Stinky Cyril

Wed 28th May, 11 am

Join Cyril the bear on a hilarious and sticky adventure through the forest, as he desperately searches for a way to clean his messy fur.



Alison Huntingford
The Glass Bulldog

Thu 5th June, 5:30 pm

In 19th Century Exeter, Tom has faced challenges his whole life. Will he be able to find peace and happiness, or will his past continue to overshadow his future?



Johnny Mains
The Dead of Summer

Thu 12th June, 5:30 pm

Johnny Mains presents a collection of tales of the bizarre, the beastly and the brutal, centred around the Summer rites and rituals of Witches, Saints and Druids.

Free to join, please email info@ivybridgebookshop.com to register

The Ivybridge Bookshop
18 Fore Street, Ivybridge

Tel 01752 963 521

www.ivybridgebookshop.com



HIGHLAND
DENTAL CARE

Part of Bupa

Say goodbye to missing teeth

Dental implants are a long-lasting,
natural-looking alternative to dentures.

Book your no-obligation implant
consultation for just £75

Call Highland Dental Care, Ivybridge
on 01752 893 152 and quote code iMag

£75
consultation
(usually £161)

*Offer available at Highland Dental Care, Ivybridge only. For patients aged 18+. Offer valid for patients who book between 24/03/25 and 24/06/25, attending the implant consultation by 30/06/25. Discount is against the full price of an implant consultation and CBCT scan which is usually £161. Appointments subject to availability. Not to be used in conjunction with any other offer. Offer may be withdrawn or amended at any time.

Highland Dental Care and Bupa Dental Care are trading names of Oasis Dental Care Limited. Registered in England and Wales no: 00478127. Registered office: Bupa Dental Care, Vantage Office Park, Old Gloucester Road, Hambrook, Bristol, United Kingdom, BS16 1GW.

AFFORDABLE FOOD AT COMMUNITY CLUB

Have you heard of the Ivy-bridge Food Club?

Part of the Ivybridge Community Food Association, the food club is there to help local people with the cost of living crisis and reduce food waste.

It offers big savings on supermarket prices. Membership is free, with just a £5 donation every time you shop.

Ivybridge Food Club is at St John's Church Hall, Blachford Road, on Tuesdays between 1-1.30pm. There is also a friendly community cafe, which is open from 12 noon until 2pm on Tuesdays.

If you're nervous about coming to a new place on



your own, a volunteer will gladly meet you at the door and show you around.

The club would like to thank Jo Higson and all the Co-Op customers who recently donated many baskets full of

toiletries to the club.

To find out more, scan the QR code above, find them on Facebook page (Ivybridge Food Club) or email ivybridgecommunityfood@gmail.com.



The IvyFridge is open 24/7 and FREE for all.

It is next to the entrance to St John's Church Hall.

Please only take what you can use so more people get to share.

The fridge may be empty at times, as what goes in it is what is available in surplus from shops and partner projects.

More volunteer drivers to collect donations and volunteer monitors to help fill the fridge would be appreciated. If you can help, email ivybridgecommunityfood@gmail.com

Ivyfridge

ST JOHNS CHURCH HALL BLACHFORD ROAD PL21 0AD

**COMMUNITY FRIDGE AND LARDER
FREE TO ALL - OPEN 24/7
PLEASE TAKE ONLY WHAT YOU CAN EAT
AND LEAVE ENOUGH FOR OTHERS**

**Share Food,
Reduce Waste
Protect the Planet**

Support our Community's fridge by

SHARING FOOD YOU WON'T EAT
BECOMING A FRIDGE MONITOR
OR FOOD COLLECTOR/DRIVER
DONATING FOOD YOU GROW
SPREADING THE WORD

Contact IvyFridge on Facebook
Hello.Ivyfridge@gmail.com



Ivybridge FOOD CLUB

AFFORDABLE

Help with cost of living
while saving food from waste
£5 donation per food box/bag
up to 70% savings on supermarket prices

Tuesdays
Community Cafe 12-2pm
Food Club 1.00-1.30
(cafe - donation pay what you can)

at St Johns Church Hall
Blachford Road
Ivybridge PL21 0AD

Free Membership

Facebook: Ivybridge Food Club
Email: Ivybridgecommunityfood@gmail.com

Forthcoming South Hams Authors Network events:

Members meeting on Wednesday, 14th May, at the Imperial Inn, Ivybridge (7.30pm). Topics are promotion and advertising for authors. Free to attend.

Five SHAN members will be reading from their work at Things Happen Here at Meadowbrook, Dartington, on Sunday, 18th May (5.30-8pm). Free entry.

South Hams Literary Festival is on Saturday, 14th June, at Unit 8 Gym, Endsleigh (10am-3pm) – see page 13.

Upcoming walks for Ivybridge Walking Club are as follows (all Sundays):

- 18th May
- 1st June
- 15th June

First walk is free. Membership £10 per annum.

ivybridgewalkingclub.com.

Ivybridge Theatre Company is busy planning its next show.

Scheduled for early November, preparations are in the early stages, so this is an ideal time to go along and meet them as rehearsals haven't yet started.

The company is looking for cast members, male or female, aged 16 plus. You may be new to acting or an experienced actor looking for a new opportunity. Small and large parts are available. ITC welcome anyone who has an interest in drama - from acting and directing to back-stage roles such as costume, lighting, sound and make-up.

The group meet on



Trefoil members playing Mahjong.

Ivybridge Trefoil has a varied programme of outings, meetings and other activities, including – once a month – playing Mahjong at a member's home.

Trefoil is an international organisation of adults who have been involved in the guiding movement or who support the aims and ethos of guiding. They support all sections of guiding, sometimes financially, raise money for their chosen charity and have a lot of fun together. FFI or if you are interested in 'trying them out', contact Joy on 07813 609317.

Wednesdays at 7.30 p.m. at Chapel Place, Fore Street, Ivybridge. To find out more phone, text or WhatsApp 07554 990902 or email secretary Teresa Davis at howard-davis@live.co.uk.

If you would like to watch experts make beautiful arrangements, while also getting plenty of tricks and tips to make your own at home, Ivybridge Flower Club is for you.

The club's monthly meetings also include amusing anecdotes and interesting facts about the flower world. To see for yourself, IFC meets every second Monday of the month at The Bridge, Leonards Road, at 7.30. Visitors are welcome (£10) and are invited to join the club after three visits.

The next general meeting of Ivybridge U3A is on Monday, 19th May, in The Watermark (2pm).

Guest speaker Stephen Powles – a renowned

wildlife expert and photographer – will give a talk on wildlife conservation and photography."

The meeting is open to members and those no longer in full-time employment who wish to find out more about what U3A has to offer.

Cathedrals: safe places to do risky things is the upcoming lecture at the Arts Society Kingsbridge.

The talk will provide an overview of the Church of England's magnificent 42 cathedrals, jewels in the crown of England's built heritage. In addition to looking at their history and stories, evolving architecture and treasures, the talk considers the role of cathedrals over the centuries and specifically their role today.

Wednesday, 28th May, in The Methodist Church, 100 Fore Street, Kingsbridge, 2pm for 2.30pm. All welcome – no need to be a member – £10 donation.



A place for everyone

WEEKLY EVENTS

Cuppa and chat

Every Wed at 11am and Sat 11.30am at The Bridge Cafe.

Ivybridge Bloomers

Every Sunday at 2pm. Meet at Harford Rd car park.

So Social Spanish

Each Wed 10am at Rochelles and 5.30pm at The Sportsman's.

Social Snaps

Photography
Times and locations vary, get in touch for more info.

Budget Bean

Times vary, get in touch for more info.

So Supportive

Each Thurs at 2pm at The Bridge Cafe.

Art n'Chat

Each Thurs at 2pm at The Bridge Cafe.

Social Stitches (crochet & knitting)

Every Thurs evening at 6.30pm at The Imperial.

Contact us for more info:

sosocialivybridge@gmail.com
07934998404.

TIMELESS ELEGANCE: RARE KUTCHINSKY JEWELS TO SPARK BIDDING FRENZY

A fine collection of high-end diamond jewellery, amassed over generations by a distinguished Devon family, is set to be sold at Plymouth Auction Rooms.

The collection, which includes an array of exquisite rings, earrings, brooches and necklaces, showcases fine pieces from the iconic British jewellery house Kutchinsky, a name synonymous with glamour and sophistication.

The family, with a history of dining at London's Ritz and enjoying personal visits to Kutchinsky's elegant show-room, has nurtured this treasure trove of jewellery, which spans decades of design excellence. The pieces themselves tell a story of timeless style, crafted during the golden eras of the swinging '60s, the bold '70s, and the opulent '80s.

Kutchinsky, one of the most celebrated names in British jewellery, became famous for its

bold, extravagant designs that captured the spirit of the times. Today, their vintage jewels are highly coveted, often fetching thousands of pounds at auction. The upcoming sale, taking place on Wednesday,



21st May, presents a rare opportunity for collectors and enthusiasts to own a piece of jewellery history.

This captivating collection promises to be a highlight of the sale, offering a glimpse of a bygone era of luxury and allure. Don't miss your chance to acquire a piece of British jewellery history. Call the saleroom on 01752

254740 for more information or head to plymouthauctions.co.uk.



DISCOVER THE VALUE OF YOUR TREASURES

at Plymouth Auction Rooms

Bring along your...

*Silver, Jewellery,
Watches & Antiques*



**Monday to Thursday
9am - 4pm**

Suitable items can be submitted to Auction



Plymouth
Auction
Rooms

plymouthauctions.co.uk

01752 254740 info@plymouthauctions.co.uk

359 Faraday Mill Trade Park,
Cattedown, Plymouth, PL4 0SE



WE BUY GOLD

ALSO SILVER & COLLECTABLES

Hectors House Antiques Centre

112 Ridgeway, Plympton PL7 2HN

We stock gifts for all occasions, antiques, vintage items, art, gold and silver and 3 floors packed with conversation pieces from around the world. Bring us your Antiques and Collectables and your unwanted Gold & Silver.

WE PAY TOP PRICES! Call us now on 01752 341681

WE ALSO BUY:

Military Items, Watches and Clocks, Coins and Stamps, Vintage Toys and Trains
Postcards and Old Books, Costume Jewellery, Bank Notes
BOX THEM UP AND POP IN FOR A CASH OFFER!

AMAZING GIFTS FOR ALL OCCASIONS

We visit
you in your
own home for your
convenience and privacy



Willwritersservices.co.uk

Member Of Society Of Will Writers

We are a long established, local, family run business, all professional, qualified and fully insured

WILLS ~ LASTING POWER OF ATTORNEY PROBATE ~ PROPERTY PROTECTION TRUSTS

EVERYONE NEEDS A WILL

Please do not think that all of your assets will automatically pass to your spouse or children – this often is not the case.

Martin Lewis and most of the financial journalists now advise everyone to take out a Lasting Power of Attorney. This is very important for older people as when in hospital they or their spouses often are not allowed to make decisions, without a LPA the social services step in instead.

Please do not fall for 'free' or cut-priced Will Services. They often come with many conditions and 'add ons'. *Our quotations are our prices.*

**SINGLE
WILL
£245***

*As members of the
Society of Will Writers
we have to adhere to their
very strict code of practice*



**Safe to do
business with
Code Compliant**

(*without a Property Protection Trust)

Contact us: 01752 770094 / www.willwritersservices.co.uk



● THE ERME PRIMARY

The Eco Council and pupils from The Erme Primary School rolled up their sleeves and made a real difference when they gathered at Bigbury Beach for a community clean-up

effort recently.

Armed with gloves, bags, and plenty of enthusiasm, the children spent the morning collecting litter from the shoreline and the rock pools, helping to protect local wildlife and

preserve the beauty of the beach for everyone to enjoy.

Staff at the school were really proud of the children's teamwork and determination, and by giving up their free time they really showed what it means to

care for the environment. It was a rewarding day for all involved, leaving the beach not only cleaner, but the children and families with a strong sense of achievement and community spirit.




MILLSWOOD
Day Nursery

Explore. Learn. Grow.



We are proud to have
been graded **Outstanding**
once again by Ofsted.

February 2025



**Call to explore our
space — 01752 698224**

- 0 - 5 year olds
- 8am - 6pm
(7.30am starts available)
- 51 weeks a year
- Fresh home cooked meals

millswoodnurseries.co.uk

GO ON A DEEP SEA ADVENTURE THIS SUMMER

Local children will be able to go on a deep sea adventure at Ivybridge Library this summer, after the theme of this year's summer reading challenge was revealed.

Based on the popular reading challenge for five- to 12-year-olds, 'The Secret Book Quest', the Summer Book Quest will see beloved characters Pip, Zena and Libro head off on a new adventure. The theme for the first year is The Deep Sea Adventure, based on the Underwater Zone in The Secret Book Quest.

The aim of this unique quest is to engage as many children as possible in reading over the summer

holidays and making it fun and engaging.

To complete the quest, children are challenged to do three things – visit Ivybridge Library, read what they love and complete one or more of The Summer Book Quest activities. Each completed task gives them a sticker and once they have them all they get a finisher sticker, keyring and certificate.

There will also be lots of activities linked to the theme of The Deep Sea Adventure, including 'draw a sea creature,

real or imagined', 'try a water activity like swimming or rock pooling' and 'tell a member of staff an underwater fact'.

Devon children's author Dan Metcalf was commissioned to create the story which introduces new characters including ninja starfish. And Emily Fox, who created the illustrations for The Secret Book Quest and Libros Friends, has done the illustrations.

Libraries Unlimited, the independent charity that runs the library service

in Devon and Torbay, has linked up with Active Devon, Surfers Against Sewage and Surfing England for The Summer Book Quest.

Surfing England will be sharing the information with their surf clubs across the county and providing prizes, while Surfers Against Sewage is providing activity resources to libraries including access to their online Ocean School, as well as providing prizes.

Active Devon is promoting the challenge and encouraging families to visit their local community pools.

The free Summer Book Quest will be launched on 12th July and be available until 6th September.



Stowford Nursery

**Respect Excellence
Friendship**

We pride ourselves at Stowford Nursery on offering children a stimulating environment with enriching learning activities.



We explore and learn through play



Jump in the tyres

Dig in the sandpit

Hunt for bugs

Play in the mud kitchen



We are a term time only setting with wrap around options 8.00am-5.45pm.

We have a highly qualified, experienced and committed team who provide the best start to a child's educational journey.

Call to arrange a visit today! 01752 894163

www.stowford.devon.sch.uk

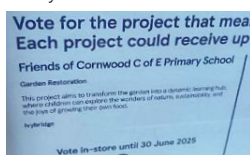
Stowford School, Exeter Road, PL21 0BG

● CORNWOOD C OF E PRIMARY SCHOOL

The school is inviting local people to get involved with a very exciting project.

It is aiming to make the garden area at the school a more inviting place for the children to use during their breaks and at lunch, as well as for extra curricular activities.

Everyone at the school is very passionate about the environment and wildlife and want the garden to provide a safe place for all the minibeasts that are so important to the ecosystem.



The school is also planning to use the garden for community afternoons throughout the year, when people can help harvest the fruit, as well as have the opportunity to read and enjoy the peaceful space.

The project has been accepted in Tesco's Stronger Starts scheme, so the school is asking people to support them by putting a blue token into the pot when they've finished their shop.

Moorsway Federation

*A family where we flourish
and learn to be the best
version of ourselves*



**Shaugh Prior
Primary School**



01752 839373

shaughprior

@moorsway.devon.sch.uk



**The Erme
Primary School**



01752 892247

theerme

@moorsway.devon.sch.uk



**Cornwood C of E
Primary School**



01752 837375

cornwood

@moorsway.devon.sch.uk

Moorsway Federation can offer:

- Schools where each child is valued and known to all the staff
- Experienced teams of dedicated staff
- An inclusive, family ethos where everyone cares for each other

- Small class sizes
- A broad and balanced curriculum combining excellence and enjoyment of learning

- An exciting weekly Forest School programme in each school
- Residential opportunities in years 4, 5 and 6
- Outdoor adventurous activity opportunities

Please contact us to arrange a personalised visit with our Head Teacher, Mrs Baker, or Assistant Head, Mrs Penhallurick, where we can share in your child's journey

www.moorswayfederation.org.uk

RAILWAY 200 EXHIBITION

A new display to celebrate the 200th anniversary of the modern railway is showing at The Devon Rural Archive at Shilstone, near Modbury.

The display features unique images – photographs, postcards and a map – from across Devon held in the archive's image bank.

The display ties in with wider Railway 200 celebrations taking place up and down the country this year.

Pop along and have a look at the display and browse a selection of books on the history of railways in Devon.

LOTTERY BOOST FOR LIBRARY OF THINGS

The Share Shed – the world's first mobile Library of Things – has received a major boost thanks to a grant of over a quarter of a million pounds from the National Lottery Community Fund.

The award means that more people will be able benefit from this brilliant initiative over the next four years.

The funding of £252,316 will enable the Share Shed, which offers over 350 items to borrow, to:

- Offer free memberships to low-income households.
- Host more community events, Repair Cafés, and skill-sharing workshops.
- Introduce new services,



such as out-of-hours borrowing via smart lockers.

The Share Shed is like a library, but instead of books, you can borrow everything from gardening tools and power drills to carpet cleaners, sewing machines, camping gear, and much more.

The Share Shed van rolls into Ivybridge every Thursday, from 10am to 12noon, at the Ivybridge Market in Glanvilles Mill car park, and South Brent at The Old School Community Centre on Fridays, also 10am-noon.

To find out more visit www.shareshed.org.uk.

MARKET IS A SHOWCASE FOR 'AT HOME' MAKERS



An eclectic mix of artisan 'home makers' offer good quality goods at fair prices at the monthly Ivybridge Artisan Market.

The market is a platform for small start-up 'at home' producers, who then sometimes go on to bigger and better things.

If you are looking for a unique item, either for yourself or for a present, the market is well worth a visit.

The market also offers a loyalty card, and gift vouchers to spend at the market are available to purchase.

Ivybridge Artisan Market is held on the first Saturday of the month (except August and January) between 9.30am and 1pm in Stowford Hall in The Watermark.

Entry is free and the hall is accessible by lift and stairs.

The next market is on 7th June.



1st Saturday of the month

BUY LOCAL SUPPORT ARTISANS

FIND US UPSTAIRS AT

THE WATERMARK

IVYBRIDGE, 9.30AM - 1PM

A MARKET SELLING A VARIETY OF ART, CRAFT & FOOD HANDMADE BY LOCAL ARTISANS.

IVYBRIDGEARTISANMARKET.CO.UK
IVYBRIDGE.ARTISAN.MARKET@GMAIL.COM

FIND US ON **facebook**

Living with memory problems or mild to moderate dementia?

Ivybridge Cognitive Stimulation Therapy Group (CST)

Cognitive Stimulation Therapy helps through:

- Improving memory, communication, concentration & thinking skills
- Increasing confidence & wellbeing
- Helping to delay cognitive decline

Thursday afternoon 1.30 - 3.30pm
at St John's Church Hall
Blatchford Road, Ivybridge PL21 0AD

To find out more about CST, the group and how to book a place please contact Kathrine

m: 07899 993134

kathrine@conversationworks.co.uk

www.conversationworks.co.uk



Community Interest Company
Registered Company Number 14087082

**SOUTH
HAMS
PHYSIO**



Clinic now at
56b Fore Street
Ivybridge

Experts in
Neurology and
MusculoSkeletal
Physiotherapy



Premier Physiotherapy Clinic in Ivybridge

We pride ourselves on providing quality physiotherapy when it is needed.

All our physiotherapists are highly skilled and registered with the HCPC and Chartered Society of Physiotherapy.

Services

We offer a variety of physiotherapy treatments

- Manual Techniques
- Treatment of pain
- Mobility
- Rehabilitation
- Physiotherapy reports

Contact us

South Hams Physio
56b Fore Street,
Ivybridge
PL21 9AE

01752 691604

info@southhamsphysio.co.uk

physio.co.uk
southhamsphysio.co.uk

Experience Premium Quality At Home Care with Visiting Angels

Visiting Angels provide exceptional assistance and personalised care for your loved ones to foster independence and enhance quality of life.

KEY SERVICES :

- Companionship
- Meal preparation and planning
- Light housekeeping
- Medication reminders
- Assistance with mobility
- End of life care
- Post hospital stay care
- Personal care



Visiting Angels South Devon

Call 01752 422105

southdevon@visiting-angels.co.uk

VisitingAngels
QUALITY AT HOME CARE

IVYBRIDGE PODIATRY

BUNIONS

Bunions are bony prominences of the toe joints, most commonly affecting the big toes but can also be in the small toe (Tailor's bunion).

Bunions are the term used for Hallux Abducto Valgus (HAV), which describes the movement of the toe joint away from its usual position, creating a bony lump, usually on the side of the foot, but also sometimes on the top of the joint. This causes a much wider forefoot, making finding comfortable footwear



By Victoria Wanyu
BSc (Hons), MRCPod
HCPC Reg: CH32103

more difficult, and can cause hard skin and pain to occur at the affected joint.

With the toe deviating towards the other toes, this can cause pressure and discomfort to the neighbouring toes, and can be the cause of corns, callus and sores.

Bunions are hereditary and cannot be corrected without surgery, but there are ways to reduce pain and prevent complications by wearing shoes that are wide enough to accommodate your foot, avoiding narrow, pointed or high heeled shoes.

Bunion pads can be worn to reduce pressure from footwear, and toe separators can be used if your toes are pressing against other toes.

Surgery is a final option if the bunion is affecting your daily life by causing pain and complications, but should only be contemplated after careful consideration, as the

procedure is not always successful, will reduce movement in the joint, and the bunion can reoccur following surgery.

If you have any concerns regarding a bunion, or complications of a bunion, please feel free to book an appointment, and I will be happy to assist you.

Ivybridge Podiatry
01752 426075
07369223733

feet@ivybridgepodiatry.com
ivybridgepodiatry.com



A Confident Smile, A Confident You!

Discover the
Lasting Benefits of
Quoris(Chrome)
Implants!

- ✓ Feel Like Your Natural Teeth
- ✓ Long Lasting
- ✓ Comfortable Chewing
- ✓ No Food or Drinking Restrictions

Book your consultation today
for only **£80!**

Call us on 01752 661631



**Put your feet in
safe hands**



Ivybridge Podiatry

**Victoria
Wanyu**
BSc(Hons)
MRCPod



@ Nature's Larder

10 Glanvilles Mill • Ivybridge
01752 426075 / 07369 223733

www.ivybridgepodiatry.com | feet@ivybridgepodiatry.com

Nature's Larder

Health Store & Natural Health Centre

Health Foods • Supplements

Beauty Products

Complementary Therapies

10 Glanvilles Mill • Ivybridge • 01752 894197
www.natureslarder.co.uk



LISA'S MOBILE HAIRDRESSING



All your hairdressing
needs in the comfort
of your own home

Call 07769 206644



HELEN JONES
BSC (HONS)
MRCPOD

01752 880819

SOUTH DEVON FOOT CLINIC

PODIATRY / CHIROPODY SERVICES

Helping you take the right steps to better foot health...

15 Fore St, Yealampton, Plymouth PL8 2JN
01752 880819 | www.southdevonfootclinic.co.uk



Moor Podiatry



Louise Hinds

Podiatrist
MRCPod/H.C.P.C. Reg

Home visiting practice

Specialising in High Risk Patients (Diabetic footcare).
Diabetic wound care/post surgical wound care.
Routine Care (Nails, Corns, Callus).
Vascular Assessment.

30 years NHS experience

- Onward referral/GP letter.

Treatment in the comfort of your own home.



Tel - 07518 789992



COLLABORATIVE COUNSELLING

**Providing Holistic Tailored
Counselling for a range of
areas, including:
Anxiety, Depression, Stress,
Grief, Loss & Trauma.**

*Working collaboratively to support you through
whatever challenges you are facing.*

Nicky Jilks MNCPS (Acc)

Local Qualified Accredited Counsellor

07303 044 787

www.collaborativecounselling.co.uk

2 Pynewood House, 1A Exeter Road Ivybridge PL21 0FN



ERME COURT - LEONARDS ROAD - IVYBRIDGE

ROOM HIRE

Trying to find a venue for your community group or youth group? Looking for a venue for a family party like a birthday or an anniversary? Need an affordable and flexible wedding venue? Here at The Watermark we have a selection of rooms for hire for a variety of activities. Catering also available. Competitive prices, why not ask for a quote. The Watermark could be the place you never knew you needed!

01752 892 220 / info@ivybridgewatermark.co.uk / ivybridgewatermark.co.uk

I FIX I REPAIR I REPLACE

Multi-skilled
career tradesman
33 years'
experience —
established 1990
Friendly, honest
advice
Fully insured



Highest award of
5 Gold Crowns for
quality of work, service
and value for money,
by Trading Standards

BACK TAKING ON NEW JOBS

ROOFLINE MAINTENANCE

Soffit | Fascia | Guttering
Dry Verge installation

PLUS
**DEPENDABLE
MAINTENANCE
SOLUTIONS**

in and around the home

• No job too small •

Probably one of the best in Ivybridge for
quality work and attention to detail.
Photos of work provided to show job is
done correctly.

**NO
VAT
ON ANY
WORK**



David Walrond

www.wareandtare.co.uk

WARE & TARE

PROPERTY CARE

LONG ESTABLISHED IVYBRIDGE COMPANY

01752 473528 or 07769 974152

HAMMER AND MOW



FENCING/CARPENTRY AND GARDEN SERVICES

- ▶ FENCING
- ▶ GATES MADE TO MEASURE
- ▶ CARPENTRY
- ▶ HEDGE CUTTING
- ▶ GRASS CUTTING
- ▶ GARDEN MAINTENANCE

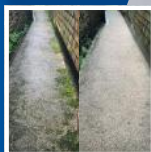
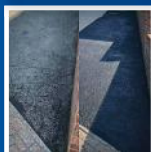


CONTACT 07938 996615



Find us on
Facebook

- * qualified
- * fully insured
- * free quotes
- * local



STEVE'S

Property Cleaning Services

**THE PATIO & DRIVEWAY
CLEANING SPECIALIST**

Steve's Property Cleaning
Services offers a first class
cleaning service, using state
of the art cleaning equipment
in combination with a high
powered jet lance

- ✓ Driveways
- ✓ Patios and repointing
- ✓ Walkways
- ✓ Garden walls
- ✓ Concrete
- ✓ Driveway and patio sealing
- ✓ Tarmac drives cleaned and sealed
- ✓ UPVC gutters, conservatories and more

01548 854015 07488 341729
stevepro.clean@gmail.com



Find us on
Facebook



**SOUTH HAMS
DOUBLE GLAZING**
Ltd



- Windows • Doors • Bi Folding Doors
- Composite Doors • Patio Doors
- Conservatories • Porch
- Conservatory Roof Replacement
- Misted/Broken Glass
- Hinges, Handle and Lock Replacement

Guaranteed for 10 Years
Wide Range of colours

Tel: 07766 202 091

www.southhamsdoubleglazing.co.uk 
email: southhamsdoubleglazing@yahoo.co.uk



South Hams Double Glazing, 37 Torre Close, Trellybridge, PL21 0BX



PALLADIUM BUILDING SUPPLIES

OVERLAP FENCE PANEL



from
£32.33
inc. VAT

SOFTWOOD UC3 TREATED SLEEPER SQUARE CUT

2400 x 195 x 95mm

£26.63
inc. VAT



SWEDISH REDWOOD TREATED DECKING

38 x 125mm (nominal size)
Dual Sided

£3.52 per metre
inc. VAT



TOPSOIL BLENDED LOAM BULK BAG

£92.54
inc. VAT



SPURCE ORNAMENTAL BARK BULK BAG

£95.04
inc. VAT

Blair Road Ivybridge PL21 0UR tel 01752 896140 ivybridge@palladiumbm.co.uk
www.palladiumbm.co.uk

KPT TIMBER & BUILDING SUPPLIES

"Pour yourself a brew and we'll get it to you!"

01752 393939 www.kpttimber.co.uk

Local family business - serving Plymouth, Ivybridge, South Hams and Tavistock areas



FULL CIRCLE MOTORS

Mechanical Repair, MOT's and Servicing on all makes of Cars and light Commercial



Class 4 - Cars



Class 5 - Minibus



Class 7 - Vans

Servicing & Repair | Diagnostic Services
Air Conditioning | Key Cutting & Programming
Mot's | Courtesy cars available

HERE WHEN YOU NEED US

Ermington Road, Ivybridge, Plymouth, PL21 9DG
Tel: **01752 698282** Fax: **01752 698291**
E-mail: info@fullcirclemotors.co.uk
Find us at www.fullcirclemotors.co.uk



We also cut and program ignition keys
(both standard and laser key cutting machines, our state of the art innovative
automobile key cutting solution for any vehicle. Ask us about for details)



LOCAL EXPERTS

GARD & CO

FREQUENTLY ASKED QUESTIONS ABOUT CONVEYANCING

At Gard & Co Solicitors, we have been assisting local people with their home conveyancing for over 200 years.

In that time, we have been asked many questions – below are the most common.

How long will it take?

Typically, the buyer requires a mortgage and there is a chain of transactions upon which the sale is reliant. In this case, it will usually take between eight and 10 weeks to reach a position

where contracts can be exchanged. The main time delays are often awaiting the results of searches and the mortgage offer, which in turn relies upon the valuation.

In a chain, the searches and mortgage offers on each property will need to be in place before an exchange can take place. Similarly, if there are any complications arising, say from adverse search result on another property in the chain, it will delay the whole chain.

W G Friend & Son Ltd

More than just an 'ordinary' garage

FRIEND'S GARAGE

8-10 Stowford
Business Park
Ivybridge
01752 690584

MOTs • Servicing • Repairs • Brakes • Tyres • Exhausts
MOTORBIKE & SCOOTERS

Sales • Repairs

CYCLES FOR ALL THE FAMILY

Servicing • Repairs • Accessories • Clothing



FRIEND'S SERVICE STATION

Leonards Road,
Ivybridge
01752 690717

Petrol • Car wash • Jet wash • Vacuum

Premier CONVENIENCE STORE

Essential groceries • Wine, beers & spirits

Hot food including Devon pasties and pies

Hot coffee • Collect BP points



On exchange of contracts, a completion date will be set – usually between one and two weeks later. So, a 'normal' conveyance will take between 10 and 12 weeks.

Will I need to pay any money up front?

If you are buying a property, you will be asked to pay the cost of the necessary conveyancing searches in advance. These are payments made to third parties and are not part of the fees of your conveyancer. You may also need sufficient funds to pay the deposit before exchange of contracts. If there is any shortfall between incoming

funds (from mortgage loans and/or the net proceeds of a related sale) you will need to pay the balancing figure before completion.

If you are selling a property, you will be asked to make a small payment in advance to cover third party fees. The agent's and conveyancer's fees will be paid from the balance of the proceeds of the sale after any mortgage loans have been repaid.

The overall balancing sum will be sent to you. If the proceeds of sale are insufficient to cover the repayment of any mortgage loans and the fees you will be asked to pay the balancing sum before completion.

Do I need a survey?

The key rule to remember when buying a property is 'buyer beware'. Providing you have not been misled, you buy the property 'as seen' (whether you have seen it or not). There are no warranties for faults, physical or legal. It is therefore highly recommended that you have an expert survey the property to make sure it is in a proper state and condition for the price you are paying for it.

Can I exchange contracts before I receive my mortgage offer?

You can but you shouldn't. Once you

have exchanged contracts you are legally obliged to complete the purchase on the completion date set in the contract.

If your lender does not provide the offer or funds by the agreed completion date, you will not be able to complete (unless you can find the money from another source) and you will be in breach of contract.

Of course, there are many more questions than space allows. If you have further questions, our conveyancers can help with

a free consultation. Call them on 01752 648174.

Alternatively, scan the QR code.



Mon-Fri: 8am-6pm Sat: 8am-12.30pm | billlomasmotorservicesivybridge.co.uk | billlomasmotorservices@btconnect.com

BILL LOMAS

MOTOR SERVICES

Blachford Road, Ivybridge // Tel: 01752 896 107



Impeccable customer service



Providing complete care



Courtesy car & collection available

30 YEARS' EXPERIENCE

Bill Lomas Motor Services is your one-stop-shop in Ivybridge for all of your vehicle servicing and repair requirements.



- Servicing • Repairs • MOTs • Tyres • Diagnostics
- MOT chassis repairs • Gearbox repairs • 4-wheel laser wheel alignment



South Hams

Accounting

by Simon Jilks FCCA

Your Local Qualified Accountant

- Business Accounts and Tax
- New Business Startup
- Tax Planning
- Personal Tax Returns
- Payroll and Bookkeeping

ACCA

☎ 07726 798 358

✉ simon@southhamsaccounting.com

🌐 www.southhamsaccounting.com

Ring & ride

TRIPS IYVBRIDGE & DISTRICT

IVYBRIDGE TOWN AREA

■ **Tuesday:** MORRISONS, TOTNES stopping at Dartinton. From Ivybridge & South Brent. £7.50. Pick up from 9.15am.

■ **Wednesday:** NEWTON ABBOTT £7.50. Pick up from 9.15am.

■ **Thursday:** TOWN CENTRE OR TESCO LEE MILL £5.50.

Ivybridge Town pick up between 9-9.30am. Depart at 11.15am. Tesco pick up 9.45am.

■ **Friday:** TESCO LEE MILL £6. Pick up from 10am.

CORNWOOD, LUTTON & SPARKWELL

■ **Tuesday:** IVYBRIDGE OR TESCO LEE MILL £6. Pick up from 9.30am.

ERMINGTON, YEALMPTON

■ **Monday:** PLYMSTOCK BROADWAY OR MORRISONS £6.50. Pick up 9.15am. *First Monday of the month Tesco Lee Mill.*

■ **Friday:** TRIP TO TESCO LEE MILL £6. Pick up from 10am.

SOUTH BRENT

■ **Wednesday:** NEWTON ABBOT £7.50. Pick up at 9.40am.

■ **Thursday:** IVYBRIDGE OR TESCO LEE MILL £6. Pick up 9.30am. Return 11.15am

TO BOOK: Call 01752 690444 between 9am-12 noon, Monday to Friday, or leave a clear message outside these times.

Conveyancing

Moving house? We'll take the worry away.

Key services:

- Mortgages & Equity Release
- Tax-efficient Investment
 - Wills
- Lasting Power of Attorney
- Protection Insurance
- Trusts & Estates

Let us take care of the legal and financial concerns with our efficient, accredited and competitively priced conveyancing service.

We also help with associated issues like financing, changes of circumstances or relationship breakdowns, cohabitation agreements, and Wills.

Get in touch today to discuss your needs.

SW Law & Finance - for every stage of life

01752 205202 | swlaw.co.uk

SW Law Ltd - This firm is regulated by the Solicitors Regulation Authority (No 558154)

SW Financial Planning Ltd - This company is authorised and regulated by the Financial Conduct Authority (FCA No: 222033)

SW Law & Finance



Conveyancing
Quality

Lexcel
Legal Practice Quality Mark
Law Society Accredited

HARRIERS EXCEL IN MARATHONS

Erme Valley Harriers athletes ran well at spring marathons in Newport (South Wales), London and Manchester, writes Dave Fox.

At Newport, Nick Bristow was the first Harrier home in a time of 3.18.48. Dave Engledew recorded a time of 3.32.51 and was 2nd male vet 65. Engledew also set a new club age group record.

Barry Neal had the most remarkable run of the day. He achieved a personal best (PB) time of 3.40.39, knocking some 22 minutes off his previous best time.

There was also a half marathon at Newport. Alison Engledew had a superb run to finish 1st female vet 65 in a time of 1.49.59.

The London and Manchester marathons were run on the same day, with hot weather at both events.

Simon Fitze was in superb form at London, where he set a new PB of 2.41.27 and was only just outside the male vet 45-49 club record held by Alan Ryder – 2.39.58 set at Taunton in 2009.

Also at London, Chris Prall missed out on a sub three hour time by just 19 seconds. Sally Erith also did well at London, posting a PB of 3.18.38.

Ronnie Haynes continued his recent great form with a time of 2.45.32 in his first marathon at Manchester. Nick Bristow did well with a time of 3.31.53, just two weeks after his marathon run at Newport. Simon Walker had a good run, recording a time of 3.52.58.



(L-r) Dave Engledew, Nick Bristow, Barry Neal and Alison Engledew at the Newport Marathon and Half

On Good Friday, the Harriers turned out in force at the Fast Friday 10K, which was run in exceptionally wet conditions. Despite this, there were some great performances.

Peter Allen was the first Harrier home in 37.08. Allister Bristow (38.30) was 3rd male vet 50 and Holly Jones (39.09) 5th female.

The ladies who ran in the female vet 55 category were in superb form, sweeping the board by taking the first three ladies places. Helen Chapell (45.41) was 1st female vet in that category followed by Lynne Whitfield (49.28) and Andrea Mitchell (50.46). Chapell also set a new club vet age record.

Alison Engledew was 1st female vet 65 (49.30), whilst Liz Bristow (49.21), Dan Adderley (51.10) and Andrew Mitchell completed the list of Harriers who ran.

On the half marathon

scene, Jeremy Westmore ran 1.35.59 in Prague, Andrea Mitchell (1.54.16) and Andrew Mitchell (2.00.29) in Berlin, while closer to home Allister Bristow ran well at Southampton with a time of 1.24.45. Bristow also won the male vet 50 title.

In 10K races, Graham Reed had a great run at the Lightning Bolt 10K as he was seventh in a time of 35.15. Ailee Aviss ran in the Southampton 10K and finished in 74.43.

On the 5K scene, the Harriers promising youngster Luke Hayes was impressive at the Run Exe 5K with a time of 16.10 to finish seventh. In the same race, Jenny Hayes recorded a time of 21.28 and Liz Bristow 24.09. Graham Reed had another impressive run at the high quality Bristol Track Club 5K with a time of 16.17.

Off road at the Bodmin Beast Marathon, Mike

Ivybridge 10K

The Harriers now turn their attention to their own popular Ivybridge 10K road race, being held on the evening of Saturday, 17th May.

The race starts at 6.30pm from Ivybridge Station car park and heads out towards Bit-taford, Moorhaven and Wrangaton before returning to finish at Ivybridge Rugby Club. Some 400 entries have been received so far and with an expected late surge of entries over 500 should make the start line.

There is still time to register as entries are open until Friday, 16th May. To enter, go to ermevalleyharriers.co.uk.

Hoskin competed the distance in 6.39.07. In the half, Dave Engledew was 1st male vet 65 in 2.10.43 and wife Alison 1st female vet 65 in 2.27.44. Lindsay Lane (2.33.44) and husband Richard (2.48.16) also successfully completed the half.

MONDAY

SOUTH HAMS CITIZENS ADVICE

09:30-12:30 The Watermark. Drop in consultations every Monday (excluding bank holidays).

SINGING MAMAS 10-11:30

Singing, cuppa & cake in the woods. FREE taster session, £10 after. Term-time. Booking: www.tothewoodsforestschoo.com.

DIGITAL SKILLS 10:00-12:00

Ivybridge Library. Learn basic digital skills with help from a friendly volunteer.

ST JOHN'S TODDLERS 10:30

St John's Church Hall, Blachford Road, Ivybridge. Toddler group for under 5s. Term time only. FFI: call Sheena on 01752 939757.

STAY AND PLAY 10:30-12:00

Ivybridge Library. For children up to 5 years old. No need to book.

COFFEE MORNING 10:30-12:00

The Hub, The Old School, South Brent. Donation. FFI: Contact Susanne, South Brent Caring - 01364 700282. Free/donation.

SOUTH HAMS COMMUNITY ORCHESTRA 10:30

Ivybridge Rugby Club. FFI see www.shco.co.uk £5/session payable termly.

RAMBLERS WELLBEING WALKS 10:00

Meet outside The Watermark. FFI: contact Tim 07745 650516.

LUNCH CLUB 12:00-13:15

The Old School, South Brent. Soups/light lunch, a pud + tea/coffee & conversation. Book via South Brent Caring 01364 700282. £5 min donation.

VETERANS PEER SUPPORT GROUP 12:00-14:00

The Farnyard Cafe, Wotter. Contact Trevor Gracey on 07964 319683.

IVYBRIDGE TREFOIL GUILD First

Monday. Please contact Joy on 07813 609317.

U3A GENERAL MEETING 14:00-

16:30 The Watermark. 3rd Monday of month (excluding bank holidays). FFI: 01752 658164/ivybridge.u3a@gmail.com.

POLICE DROP IN SESSION 14:30

Ivybridge Library. First Monday of month.

RAF AIR CADETS 19:00-21:00

Cadet Centre, Filham Park. FFI: cc.339@rafac.mod.gov.uk.

ERME WI 19:30 The Bridge, Leonards Road. 3rd Monday of month. All welcome. FFI: contact 07779 534853.

IVYBRIDGE FLOWER CLUB 19:30

The Bridge, Leonards Road. Every second Monday. FFI: contact Lindsey Reid 01752 894579.

SEQUENCE DANCING CLUB

19:30-22:00 Lee Moor Public Hall. 01752 892741.

TUESDAY

WARM SPACE FOR ALL 10:00

St John's Church Hall, Blachford Rd. Every Tues. Contact Sheena 01752 939757.

LITTLE FISHIES PARENTS AND TODDLERS GROUP 09:30-11:00

The Bridge, Leonards Road. Term time. £2 per family. FFI: 01752 896974/ ruth.j.hammond@salvationarmy.org.uk.

RAMBLERS WELLBEING WALKS

10:00 Every Tuesday. Meet at Ivybridge Leisure Centre. FFI: Lisa Alford - 07582 350349 / lisa.alford@activedevon.org.

TODDLERS 10:00-11:30

Ivybridge Baptist Church. Term times only. 07516 085121 / iebc@hotmail.co.uk.

SO SOCIAL SNAPS 13:00

Informal photography group. Phone or camera. Free. FFI: search FB/07929 923649.

IVYBRIDGE COMMUNITY HUB

10:30-12:00 Ivybridge Library. www.innercompassguide.com/community-hub.

IVYBRIDGE FOOD CLUB 12:00-

14:00 St John's Church Hall, Blachford Road Every Tuesday. The Community Cafe is open from 12-2pm, serving homemade food, and shopping, to prevent food wastage, is from 1-1.30pm. Everyone welcome.

IVYBRIDGE PROBUS CLUB From

12:00 Rose & Crown, Yealmpton. 07780 150750 / rvonoven@icloud.com.

TUESDAY LUNCHES 12:15-13:30

Ivybridge Methodist Church. Children welcome.

IVYBRIDGE ARTY CRAFTY GROUP 13:30-16:30

Scout and Guide HQ, Blachford Rd. FFI: contact Gerry 01752 690176 or Hazel 01752 892438.

MEN'S TENNIS & PICKLE BALL FOR MENTAL WELLBEING 14:30

every Tuesday. South Devon Tennis Centre.

5th IVYBRIDGE RAINBOWS 17:30-

18:30 Ivybridge Methodist Church. Contact Jenny 01752 894265 / ivybridgerainbows5th@outlook.com.

3rd IVYBRIDGE BROWNIES 18:00-

19:30 Ivybridge Methodist Church. Contact Jenny 01752 894265 / 3rdivybridgebrownies@gmail.com.

CUBS 18:30-20:00

Scout Hut, Leonards Road car park. FFI: 1stivycubs@gmail.com or 1stivygsl@gmail.com.

ERME VALLEY HARRIERS - SENIORS TRAINING 18:00-

19:00 Ivybridge Rugby Club. FFI: Keith Reed 01752 893573/ ermevalleyharrisers.co.uk.

ARMY CADETS 19:00-21:00

Cadet Centre, Filham Park. FFI: 1399boy@armymail.mod.uk.

IVYBRIDGE COMMUNITY CHOIR 19:30-21:30

Douro Court. southdevonsingers@gmail.com / 07915 053950.

IVYBRIDGE & DISTRICT CAMERA CLUB 7.30pm

on two Tuesdays per month alternating between Zoom and Bittaford Jubilee Hall. www.ivybridgecameraclub.org.

IVYBRIDGE YOUNG FARMERS

19:30 The Hunting Lodge, Cadleigh Lane. First Tuesday of the month. FFI: www.facebook.com/IvyYFC / call 07472904700.

WEDNESDAY

IVYBRIDGE CARING VOLUNTEERS 09:30-12:00

The Watermark. Drop in for a chat about donating a couple of hours of your time for elderly people in the community.

MUSTARD TREE CANCER CAFE 9:30-12:30

Ivybridge Methodist Church. Alternate Wednesdays. Drop in. FFI: 01752 430060 Facebook - Mustard Tree Macmillan Cancer Support.

SO SOCIAL SPANISH 10:00

Rochelles River Cafe. Informal conversation group. Any level. No cost. FFI: 07929 923649.

WALK & TALK 10:30. Accessible

30+ min walk for those with limited mobility or wishing for company, with tea/cake at the end at The Hub, South Brent. Drop-in. Free/ donation.

LITTLE STARS 10:30-11:30

Ivybridge Library. Aimed at pre-school children looking at numbers, colours and letters. No need to book.

READ AND REMINISCE 10:30-

12:30 Ivybridge Library. Listen to poems and stories read aloud. Share your memories over a cup of tea or coffee. Free. Contact

Ivybridge Library on 01752 893140.

COMMUNITY CAFE 11:00-15:00

The Bridge, Leonards Road. FFI: ivybridge@salvationarmy.org.uk.

SO SOCIAL - COFFEE MORNING

11:00-12:00 The Bridge Community Cafe. Everyone welcome. Facebook: So Social Ivybridge / call Shirley Weeks on 07934 999404.

IVYBRIDGE FOODBANK 13:00-

15:00 Ivybridge Methodist Church. Open to all. FFI: www.ivybridge.foodbank.org.uk/email info@ivybridge.foodbank.org.uk/ 07706 457336. Food donations welcome 10am-12pm.

SO SOCIAL UKRAINIAN SUPPORT GROUP 13:00

The Bridge, Leonards Road. Last Wednesday of the month. FFI: search Facebook - So Social Ivybridge/phone 07934 999404 / connector@southhamscvs.org.uk.

THE BRIDGE STROKE GROUP

13:30-15:30 Ivybridge Town Hall. Second Wednesday of the month. For details call 01752 896931.

IVYBRIDGE MEMORY CAFE

14:00-16:00 The Watermark. Fortnightly for entertainment, refreshments and a chat together. If your loved one is suffering from cognitive impairment give us a call on 07498746944.

FRIENDS DAY WEDNESDAY

14:00-16:00 The Old School, South Brent. Friendly fun group, games, quizzes, singing, themes, craft and more, open to all, particularly with dementia. FFI: Susanne on 01364 700282 for a space. Free/donation.

IVYBRIDGE BLOOMERS 14:00-

16:00 The Leat Garden, off Fore Street. Search Facebook - Ivybridge Bloomers, see ivybridgebloomers.community or phone 07934 999404.

KNITTING GROUP 15:00-17:00

The Hub, South Brent. Friendly fun group, adults and children with an adult welcome, all abilities. Free/ donation.

1st IVYBRIDGE GUIDES 18:00-

20:00. Timings and location can vary depending on the activity. FFI: contact Leah Parsons ivybridgeguides@hotmail.com.

4th IVYBRIDGE GUIDES 18:30-

20:00. The location will depend on the activity. FFI: call Sharon on 01752 698656, fourthivybridgeguides@outlook.com.

IVYBRIDGE ROTARY CLUB 19:00-

20:00 The Bridge Cafe. Fortnightly on the 2nd and 4th Wednesday of the month. FFI: IybridgeRotary@gmail.com or see www.facebook.com/IybridgeRotary.

ERME VALLEY RANGERS 18:30-20:30. Part of Girlguiding for girls aged 14-18. Location will depend on the activity. For information call Sharon on 01752 698656.

ROYAL BRITISH LEGION 19:00-21:00 Iybridge Constitutional Club. FFI: contact Dermot Roberts on 01752 691645.

IYBRIDGE THEATRE COMPANY 19:30-22:00 Chapel Place Community Centre, off Fore Street. FFI: 01752 893308 / howard-davis@live.co.uk

SONGBIRDS Women's singing circle at Lukesland 19:00-20:30. 1st & 3rd Weds. FREE taster, then £10. Book at - tothewoodsforestschoo.com

THURSDAY

IYBRIDGE CARING VOLUNTEERS 09:30-12:00 The Watermark. Drop in for a chat about donating a couple of hours of your time for elderly people.

RAMBLERS WELLBEING WALKS 10:00 Every Thursday. Meet Iybridge Leisure Centre. FFI: contact Lisa Alford - 07582 350349 / lisa.alford@activedevon.org.

COMMUNITY CAFE 10:00-15:00 The Bridge, Leonards Road. iybridge@salvationarmy.org.uk.

MASS 10:00 St Austin's Priory.

BOUNCE & RHYME 10:30-11:00 Iybridge Library. For children under 3 and their carers. No need to book. Suggested donation 50p per child.

SHARE SHED Borrow hundreds of useful items at a low cost. Glanvilles Mill car park, Iybridge, 10am-12noon. FFI: www.shareshed.org.uk, call 07516 908237 or info@shareshed.org.uk.

BOOK GROUP 11:00 Every 2nd Thursday at Iybridge Library. Pop into the library to find out more.

SONGS & STORIES 13:15-14:45 Term time for babies & children under school age. Iybridge Methodist Church. Contribution of £2 requested.

SO SOCIAL IYBRIDGE - PEER SUPPORT 14:00-15:00 The Bridge, Leonards Road. Free peer support group for people living with long-term medical conditions and

disabilities. FFI: Facebook: search So Social Iybridge or call 07934 999404.

KNIT AND NATTER 14:30-16:30 Iybridge Library.

1st IYBRIDGE RAINBOWS 16:10-17:20 St John's Church Hall. FFI: contact Jackie: fristivyrainbows@live.co.uk.

2nd IYBRIDGE RAINBOWS 17:10-18:20 St John's Church Hall. FFI: fristivyrainbows@live.co.uk.

ERME VALLEY HARRIERS - JUNIOR TRAINING 18:00-19:15 Iybridge Community College. For those aged 8+ of all abilities. FFI: 01752 893573 www.ernevalleyharrisers.co.uk.

SO SOCIAL STITCHES The Imperial 18:00-21:00. FFI: sosocialiybridge@gmail.com.

VOLUNTEER POLICE CADETS 18:30 Iybridge Community College (term time only). £3/week. dc.police.uk/cadets/joiningcadets@dc.police.uk.

SCOUTS 19:00-21:00 Scout Hut, Victoria Park, Blachford Road. Contact iybridgescouts@gmail.com or 1stivygs@gmail.com.

ARMY CADETS 19:00 Cadet Centre, Filham Park. FFI: contact Abigail Boyne 0n1399bbyn@armymail.mod.uk or visit armycadets.com/

TABLE TENNIS 19:15-20:45 Peverell Hall, Iybridge Community College. FFI: contact Alan on 07712 896185 or iybridgegettca@aol.com.

CROOKED TEMPO SAMBA BAND 19:30-21:30 Ermington Church. Every Thursday. Session fees are £3 per person/per week.

FRIDAY

LITTLE FISHIES PARENTS AND TODDLERS GROUP 09:30-11:00 The Bridge, Leonards Road. Term time only. £2/session/family.

BUSY BEES 10:12-00 Parent & child group (18m-5yrs) £12/session. Term-time. Booking: www.tothewoodsforestschoo.com.

SHARE SHED Borrow hundreds of useful items at a low cost. Old School Community Centre, Totnes Road, South Brent, 10am-12noon.

IYV CRAFTERS 10:00-12:00 Endsleigh Garden Centre. £10 per session, all materials included. Call 07706 317825 or theivycrafters@gmail.com.

CATHOLIC WOMEN'S LEAGUE

11:00 St Austin's Priory. First Friday of each month. All welcome.

COMMUNITY CAFE 11:15-15:00 The Bridge, Leonards Road. iybridge@salvationarmy.org.uk.

ART FOR CALM 13:00-14:30 Every 2nd Friday. Iybridge Library. Word art and doodling 'accidental' art therapy.

RAMBLERS' WELLBEING WALKS SOUTH BRENT 14:00 Every Friday. Walks start at the junction of Station Approach and Hillside. Scenic, friendly and varied walks of around 90 minutes (level 3). Then drinks and chat at the Station House.

PAGE TURNERS First Friday of the month, 2-3pm, Iybridge Library. An hour of talking about our favourite things - books! FFI: call Iybridge Library on 01752 893140.

WISE AND WONDERFUL 14:30-16:00 Iybridge Methodist Church. A fellowship group open to everyone. £1 per person. Contact Val 893614, Maureen 945799, Sue 896444, Carole 894676, Christine and David 892858, Judy 894829.

ERME VALLEY HARRIERS - SENIORS TRAINING 18:00-19:00 Social run for all abilities. Contact Keith Reed - 01752 893573 / ernevalleyharrisers.co.uk.

THE BRIDGE PROJECT YOUTH CAFE 18:30-22:00 The Bridge, Leonards Road. Drop-in evening. Free. 6.30-8pm for Years 6, 7 & 8. 8.30-10pm for Years 9 & above (up to 18). Call Elis Norton: 07966 911560/admin@iybridge.yfc.co.uk.

RAF AIR CADETS 19:00-21:30 Cadet Centre, Filham Park. FFI: cc.339@rafac.mod.gov.uk.

SATURDAY

IYBRIDGE ARTISAN MARKET 09:30-13:00 The Watermark. First Saturday of the month. iybridgeartisanmarket.co.uk.

COFFEE MORNING 10-12:00 South Brent Methodist Church School Room. First Saturday of month. All welcome

THE STORE - IYBRIDGE'S REPAIR CAFE + SHARE SHOP 10:00 Makers Mews, Harford Road, Iybridge. Final Saturday of each month.

LEGO CLUB 10:30-12:30 Iybridge Library. All ages welcome. No need to book. Suggested donation 50p per child.

SO SOCIAL - COFFEE MORNING 11:00-12:00 The Bridge Cafe. Everyone welcome. Facebook: So Social Iybridge or phone 07934 999404.

THE ART PLAYGROUND 11:00-14:00 The Clay Factory. First Saturday of the month. Community art making for all ages, adults and children. Free. jamila@jamilahanan.com.

COMPASSIONATE CAFES Bereavement support café, listening, friendship and cake! Open to all. 10:00-12noon, 2nd & 4th Saturday of month, Chapel Place, Iybridge. 10:00-11:30 3rd & 4th Saturday of month, The Old School Community Centre, South Brent.

MESSY CHURCH 14:00-15:30 The Bridge, Leonards Road. Second Saturday of each month. Suitable for ages 3-10. iybridge@salvationarmy.org.uk for details.

SUNDAY

FAMILY WORSHIP 10:30 Iybridge Methodist Church. Lively family worship with activities for all ages of young people. Contact Pam Montgomery imcbookings@gmail.com or 01752 894083.

SALVATION ARMY SUNDAY WORSHIP 10:30-10:30 The Bridge, Leonards Road. FFI: contactiybridge@salvationarmy.org.uk.

MORNING WORSHIP 10:30 St John The Evangelist. One hour service followed by refreshments. Contact Paul Hincley - vicar. sdmc@gmail.com/01752 895227.

SERVICE 10:30 Iybridge Baptist Church. Junior church and crèche during the message. Tea/coffee after the service. Pastor John Williams - email iebcb@hotmail.co.uk 07853 620648.

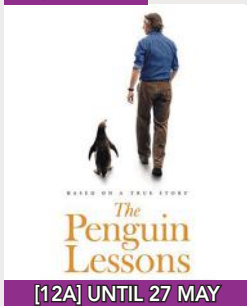
MASS 11:00 St Austin's Priory. With children's liturgy. Tea/coffee afterwards.

IYBRIDGE WALKING CLUB 10:00-16:00. Fortnightly walks in and around the South Hams and beyond. FFI: iybridgewalkingclub.com.

IYBRIDGE BLOOMERS 14:00-16:00 The Snail Garden, Harford Road. Phone Shirley Weeks on 07934 999404.

SERVICE 18:00 Iybridge Baptist Church. Communion on the 3rd Sunday of the month. Pastor: Andrew Holland - email: iebcb@hotmail.co.uk.

Cinema



BASED ON A TRUE STORY

The Penguin Lessons

[12A] UNTIL 27 MAY

Die Walküre



14 MAY

ROYAL BALLET & OPERA

Ballet to Broadway

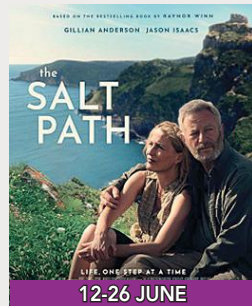


22 MAY

ROYAL BALLET & OPERA

BASED ON THE BESTSELLING BOOK BY RAYMOND WINN
GILLIAN ANDERSON JASON ISAACS

the SALT PATH



LIFE, ONE STEP AT A TIME

12-26 JUNE

National Theatre Live

A STREETCAR NAMED DESIRE

26 JUNE

ORIGINAL DIRECTOR: PATRICK MARSHALL
BY TIMOTHY F. JAMES ANDERSON AND PATRICK MARSHALL
Inchbarn & June



Live events



ZOE LYONS – 16 MAY


DINNER WITH DINOS

Join Southwest Garrison and their dinosaurs for lunch (pre-booking essential)



Wednesday 28 May from 11.30am until 1.30pm
Ticket: £9 which includes children's lunch, meet the dino and a gift to take home

28 MAY



PANTALOONS PRESENT
SENSE AND SENSIBILITY
– 30 MAY

THE BOWIE EXPERIENCE

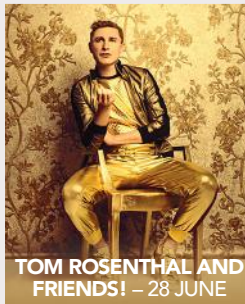
– 7 JUNE



THE DAVE HANKIN BIG BAND

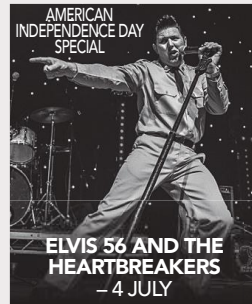


THE DAVE HANKIN BIG BAND – 15 JUNE 3pm



TOM ROSENTHAL AND FRIENDS! – 28 JUNE

AMERICAN INDEPENDENCE DAY SPECIAL



ELVIS 56 AND THE HEARTBREAKERS
– 4 JULY

The Curious Incident of the Dog in the Night-Time

Directed by THE TAMARITANS THEATRE COMPANY

– 8-12 JULY

Edited by Mark Haddon

A teenage boy who is a complete stranger on a journey that challenges everything he knows about trust, family and himself. Real, moving and unforgettable – this is a story about looking under the skin and through to the heart.

Tickets: £15.00
Concessions: £10.00
Group rate: £10.00
£10.00

www.ivybridgewatermark.co.uk



ALBERT LEE – 18 JULY

IVYBRIDGE COMEDY CLUB

HEADLINER
ANDREW MAXWELL

FEATURING A STELLAR LINEUP OF THE UK'S FINEST TV AND CIRCUIT COMEDIANS.

19TH JULY

AS SEEN ON: GQ, NEVER MIND THE BIZZCOCKS, THE VOICES OF 80, ON THE BEACH & I'M A CELEBRITY... GET ME OUT OF HERE!

PEOPLE AVAILABLE FROM 10PM UNTIL 11PM
THE WATERMARK DRINK CLOUTIER, LEONARDS RD, IVYBRIDGE PL3 8EE

IVYBRIDGE COMEDY CLUB – 19 JULY

The Watermark

ERME COURT - LEONARDS ROAD - IVYBRIDGE

BOX OFFICE
01752 892 220
ivybridgewatermark.co.uk

LIVE EVENTS / CINEMA / COFFEE SHOP / INFO CENTRE / WEDDINGS / CONFERENCES / PRIVATE PARTIES